



Bonanza Creek Energy

Surface Post Job Report

State North Platte K-35-36MRLNB

S:26 T:5N R:63W Weld CO

Quote #: | Execution #:



Bonanza Creek Energy

Attention: Mr. Joel Dill | (720) 633-5871 | JDill@bonanzacrk.com

Bonanza Creek Energy | 410 17th St Suite 1400 | Denver, CO. 80202

Dear Mr. Joel Dill,

Thank you for the opportunity to provide cementing services on this well. BJ Services strives to achieve complete customer satisfaction. If you have any questions regarding the services or data provided, please contact BJ Services at any time.

Sincerely,
Jacob Ojeda
Field Engineer I | (763) 516-3012 | jacob.ojeda@bjservices.com

Field Office 1716 East Allison Rd., Cheyenne WY, 82007
Phone: (307) 638-5585

Sales Office 999 18th St. Suite 1200 Denver, CO 80202
Phone: (281) 408-2361

Cementing Treatment



Start Date	3/28/18	Well	State North Platte K-35-36MRLNB
End Date	3/28/18	State/Province	CO
Client	BONANZA CREEK ENERGY	API	05-123-46387
Client Field Rep	Josh Pilkin	Rig	Xtreme 19
Service Supervisor	Roger Acuna	Type of Job	Surface
District	Cheyenne, WY		

WELL GEOMETRY

Type	ID (in)	OD (in)	Wt. (lb/ft)	MD (ft)	TVD (ft)	Excess(%)	Grade	Thread
Open Hole	13.50			1,512.00	1,512.00	30.00		
Casing	8.92	9.63	36.00	1,502.00	1,502.00		J-55	8RD

Shoe Length (ft): 45

HARDWARE

Top Plug Used?	Yes	Max Casing Pressure - Rated (psi)	2816
Top Plug Provided By	Rig	Max Casing Pressure - Operated (psi)	1500
Top Plug Size	9 5/8"	Pipe Movement	No
Centralizers Used	Yes	Job Pumped Through	2" Iron
Centralizers Quantity	15	Top Connection Thread	LTC
Centralizers Type	Bow Spring	Top Connection Size	9 5/8"
Landing Collar Depth (ft)	1,457		

CIRCULATION PRIOR TO JOB

Well Circulated By	Rig	YP Mud Out	4
Circulation Prior to Job	Yes	PV Mud In	5
Circulation Time (min)	30	PV Mud Out	5
Circulation Rate (bpm)	5	YP Mud In	4
Circulation Volume (bbls)	150	10 sec SGS	2
Lost Circulation Prior to Cement Job	No	10 min SGS	3
Mud Density In (ppg)	8.8	30 min SGS	5
Mud Density Out (ppg)	8.8		

TEMPERATURE

Ambient Temperature (°F)	35°	Slurry Cement Temperature (°F)	55°
Mix Water Temperature (°F)	55°	Flow Line Temperature (°F)	70°

Cementing Treatment



BJ FLUID DETAILS

Fluid Type	Fluid Name	Density (ppg)	Yield (Cu Ft/sk)	H2O Req. (gals/sk)	Length (Ft)	Vol (sk)	Vol (Cu Ft)	Vol (bbls)
Spacer / Pre Flush / Flush	Water (Pre-flush)	8.3308						20.0000
Tail Slurry	BJCem S100.3.XC	14.5000	1.3901	6.78	1,500.00	698	971.0000	172.8000
Displacement Final	Water	8.3300					0.0000	112.6000

Fluid Type	Fluid Name	Component	Concentration	UOM
Tail Slurry	BJCem S100.3.XC	CEMENT, ASTM TYPE III	100.0000	PCT
Tail Slurry	BJCem S100.3.XC	FOAM PREVENTER, FP-13L	0.0300	GALS/SK

TREATMENT SUMMARY

Fluid	Rate (bpm)	Fluid Vol. (bbls)	Pipe Pressure (psi)
Water (Pre-flush)	5.00	20.00	150
BJCem S100.3.XC	5.00	172.80	350
Water	6.00	112.60	750

DISPLACEMENT AND END OF JOB SUMMARY

Displaced By	BJ Services	Amount of Cement Returned/Reversed	17
Calculated Displacement Volume (bbls)	112.6	Method Used to Verify Returns	Visual
Actual Displacement Volume (bbls)	112.6	Amount of Spacer to Surface	20
Did Float Hold?	Yes	Pressure Left on Casing (psi)	0
Bump Plug	Yes	Amount Bled Back After Job	1/2
Bump Plug Pressure (psi)	1250	Total Volume Pumped (bbls)	305.6
Were Returns Planned at Surface	Yes	Top Out Cement Spotted	No
Cement returns During Job	17	Lost Circulation During Cement Job	No

Customer Name BONANZA CREEK
 Well Name STATE NORTH PLATTE K-3
 Job Type SURFACE

District CHEYENNE
 Supervisor ROGER ACUNA



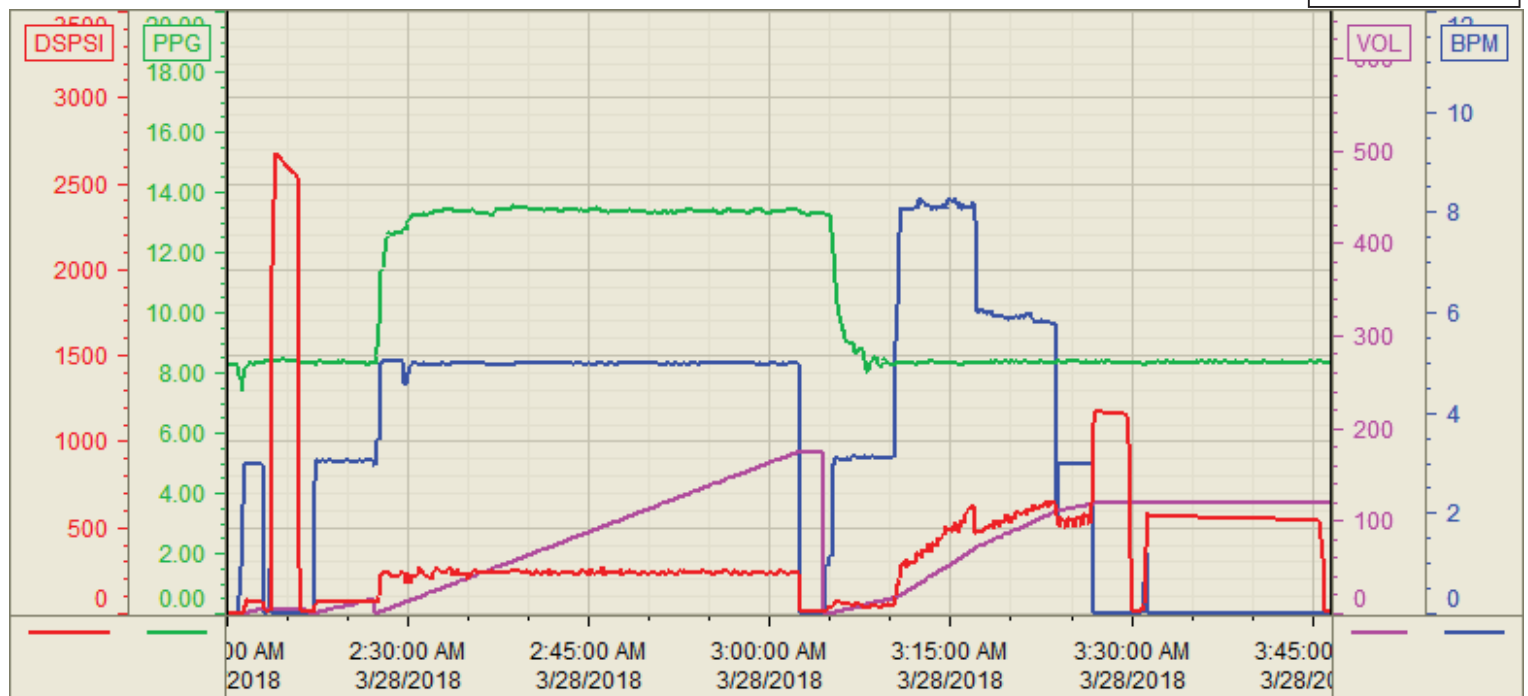
Seq No.	Start Date/Time	Event	Event ID	Density (lb/gal)	Pump Rate (bpm)	Pump Vol (bbls)	Pipe Pressure (psi)	Comments
1	3/27/2018 18:30	CALLED OUT						CALLED OUT, RTS 0:30 ON 3/28/18
2	22:00	JM STEACS						JOURNEY MANAGEMENT WITH BJ CREW TO DISCUSS ROUTES AND HAZARDS
3	22:15	DEPART KERSEY						DEPART KERSEY CO TRUCK STOP
4	23:00	ARRIVE TO LOCATION						ARRIVE TO LOCATION, CHECK IN WITH COMPANY MAN, 13.5" OH TO 1512', 9 5/8" CSG TO 1502', 45'SJ, 8.8PPG MUD IN WELL
5	23:15	STEACS RIG UP						SAFETY MEETING WITH BJ CREW ON SPOTTING EQUIPMENT AND RIGGING UP
6	23:30	RIG UP IRON						RIG UP IRON AND HOSES
7	3/28/2018 0:00	WAITING ON RIG						WAITING ON RIG TO RUN CASING
8	2:00	STEACS PRE JOB						SAFETY MEETING WITH BJ CREW, RIG CREW, AND COMPANY MAN TO DISCUSS THE JOB AND HAZARDS
9	2:15	START JOB						START JOB
10	2:16	FILL LINES		8.33	3	5	95	FILL LINES 5BBLS DYED FRESH WATER
11	2:19	TEST LINES					2500	TEST LINES 2500PSI
12	2:21	PUMP SPACER	56	8.33	5	15	150	PUMP 15BBLS DYED FRESH WATER SPACER, TOTAL SPACER PUMPED 20BBLS
13	2:28	PUMP CEMENT		14.5	5	173	350	PUMP 173BBLS PRIMARY CEMENT @ 14.5PPG (698SKS 1.39YLD 6.78GPS)
14	3:01	SHUTDOWN						SHUTDOWN TO DROP PLUG
15	3:05	DROP PLUG						DROP TOP PLUG
16	3:06	DISPLACEMENT		8.33	8	100	1000	PUMP FRESH WATER DISPLACEMENT
17	3:20	CEMENT TO SURFACE						17BBLS CEMENT TO SURFACE
18	3:23	SLOW RATE		8.33	3	12.7	750	SLOW RATE TO BUMP PLUG
19	3:26	BUMP PLUG						BUMP PLUG FINAL CIRCULATING PRESSURE 750PSI BROUGHT 1250PSI TO HELD FOR 3 MIN
20	3:29	CHECK FLOATS	68					CHECK FLOATS, 1/2BBL BACK TO THE PUMP
21	3:30	CASING TEST						500PSI CASING TEST HELD FOR 15MIN
22	3:45	END JOB						END JOB
23	4:00	STEACS RIG DOWN						SAFETY MEETING WITH BJ CREW TO DISCUSS HAZARDS ON RIG DOWN
24	4:30	RIG DOWN IRON						RIG DOWN IRON
25	5:30	JM STEACS						JOURNEY MANAGEMENT WITH BJ CREW TO DISCUSS ROUTES AND HAZARDS
26	5:45	DEPART LOCATION						DEPART LOCATION

Customer: Bonanza Creek
Well Number: K-35-36MRLNB
Lease Info: State North Platte



Print Date/Time

3/28/2018 4:06:14 AM



	Name	Y value	X value/time stamp	Tag name Y
1	DS - Press(PSI)	6.0 i.	3/28/2018 2:15:00 AM i.	Cementer\DS_DISCHARGE_PRESS_DIAL
2	DH - Density (PPG)	8.32 i.	3/28/2018 2:15:00 AM i.	Cementer\DENSITY2_ACTUAL_RATE
3	Down Hole Total (BBLs)	0.0 i.	3/28/2018 2:15:00 AM i.	Cementer\DOWNHOLE_FLOW_TOTAL
4	Combined rate (BPM)	0.00 i.	3/28/2018 2:15:00 AM i.	Cementer\Flow_Combined
5				

Source: Control1 4:06:08 AM