



Bonanza Creek Energy

Surface Post Job Report

North Platte 31-35-2MRLNC

S:26 T:5N R:63W Weld CO

Quote #:

I Execution #:



Bonanza Creek Energy

Attention: Mr. Joel Dill | (720) 633-5871 | JDill@bonanzacrk.com

Bonanza Creek Energy | 410 17th St Suite 1400 | Denver, CO. 80202

Dear Mr. Joel Dill,

Thank you for the opportunity to provide cementing services on this well. BJ Services strives to achieve complete customer satisfaction. If you have any questions regarding the services or data provided, please contact BJ Services at any time.

Sincerely,
Jacob Ojeda
Field Engineer I | (763) 516-3012 | jacob.ojeda@bjservices.com

Field Office 1716 East Allison Rd., Cheyenne WY, 82007
Phone: (307) 638-5585

Sales Office 999 18th St. Suite 1200 Denver, CO 80202
Phone: (281) 408-2361

Cementing Treatment



Start Date	3/27/18	Well	North Platte 31-35-2MRLNC
End Date	3/27/18	State/Province	CO
Client	BONANZA CREEK ENERGY	API	05-123-46384
Client Field Rep	SAM	Rig	Xtreme 19
Service Supervisor	ROGER ACUNA	Type of Job	Surface
District	Cheyenne, WY		

WELL GEOMETRY

Type	ID (in)	OD (in)	Wt. (lb/ft)	MD (ft)	TVD (ft)	Excess(%)	Grade	Thread
Open Hole	13.50			1,547.00	1,547.00	30.00		
Casing	8.92	9.63	36.00	1,537.00	1,537.00		J-55	8RD

Shoe Length (ft): 42

HARDWARE

Top Plug Used?	Yes	Max Casing Pressure - Rated (psi)	2816
Top Plug Provided By	Bonanza Creek	Max Casing Pressure - Operated (psi)	1500
Top Plug Size	9 5/8"	Pipe Movement	No
Centralizers Used	Yes	Job Pumped Through	2" Iron
Centralizers Quantity	15	Top Connection Thread	8rd
Centralizers Type	Bow Spring	Top Connection Size	9 5/8"
Landing Collar Depth (ft)	1,492		

CIRCULATION PRIOR TO JOB

Well Circulated By	Rig	PV Mud In	6
Circulation Prior to Job	Yes	PV Mud Out	6
Circulation Time (min)	45min	YP Mud In	4
Circulation Rate (bpm)	5bpm	YP Mud Out	4
Circulation Volume (bbls)	225bbls	10 sec SGS	3
Mud Density In (ppg)	8.9ppg	10 min SGS	4
Mud Density Out (ppg)	8.9ppg	30 min SGS	6

TEMPERATURE

Ambient Temperature (°F)	40°	Slurry Cement Temperature (°F)	55°
Mix Water Temperature (°F)	55°	Flow Line Temperature (°F)	70°

Cementing Treatment



BJ FLUID DETAILS

Fluid Type	Fluid Name	Density (ppg)	Yield (Cu Ft/sk)	H2O Req. (gals/sk)	Length (Ft)	Vol (sk)	Vol (Cu Ft)	Vol (bbls)
Spacer / Pre Flush / Flush	Water (Pre-flush)	8.3308						20.0000
Tail Slurry	BJCem S100.3.XC	14.5000	1.3901	6.78	1,537.00	698	971.0000	172.8000
Displacement Final	Water	8.3300					0.0000	115.5000

Fluid Type	Fluid Name	Component	Concentration	UOM
Tail Slurry	BJCem S100.3.XC	CEMENT, ASTM TYPE III	100.0000	PCT
Tail Slurry	BJCem S100.3.XC	FOAM PREVENTER, FP-13L	0.0300	GALS/SK

TREATMENT SUMMARY

Fluid	Rate (bpm)	Fluid Vol. (bbls)	Pipe Pressure (psi)
Water (Pre-flush)	5.00	20.00	250
BJCem S100.3.XC	5.00	172.80	350
Water	0.00	115.50	700

DISPLACEMENT AND END OF JOB SUMMARY

Displaced By	BJ Services	Amount of Cement Returned/Reversed	35
Calculated Displacement Volume (bbls)	115.5	Method Used to Verify Returns	Visual
Actual Displacement Volume (bbls)	115.5	Amount of Spacer to Surface	20
Did Float Hold?	Yes	Pressure Left on Casing (psi)	0
Bump Plug	Yes	Amount Bled Back After Job	0.5
Bump Plug Pressure (psi)	1200	Total Volume Pumped (bbls)	308.5
Were Returns Planned at Surface	Yes	Top Out Cement Spotted	No
Cement returns During Job	35	Lost Circulation During Cement Job	No

Customer Name BONANZA CREEK
 Well Name NORTH PLATTE 31-35-2M
 Job Type SURFACE

District CHEYENNE
 Supervisor ROGER ACUNA
 Engineer _____



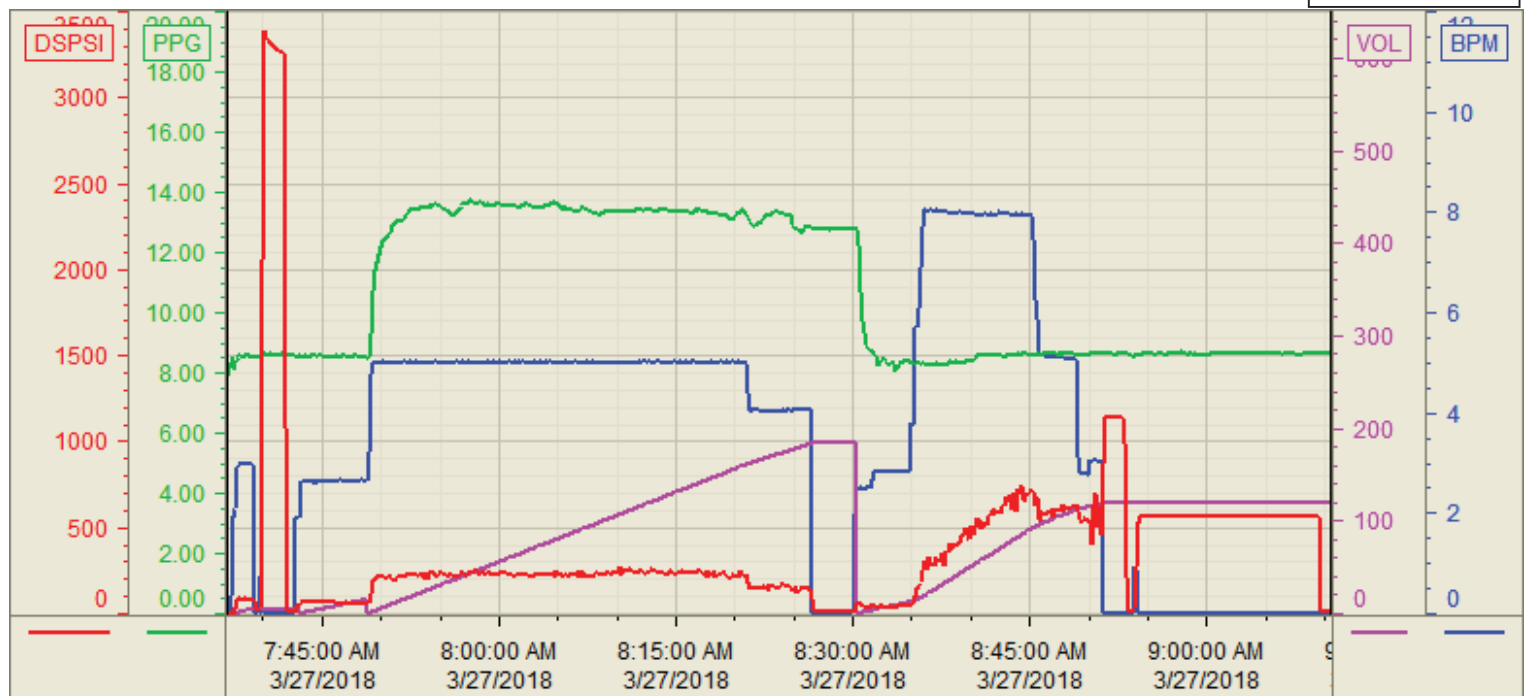
Seq No.	Start Date/Time	Event	Event ID	Density (lb/gal)	Pump Rate (bpm)	Pump Vol (bbls)	Pipe Pressure (psi)	Comments
1	3/27/2018 0:30	CALLED OUT						CALLED OUT TO LOCATION, RTS 0630
2	3:15	JM STEACS						PRE JOURNEY MANAGEMENT WITH BJ CREW TO DISCUSS ROUTES AND HAZARDS
3	3:30	DEPART TO LOCATION						DEPART KERSEY CO GAS STATION
4	4:00	ARRIVE TO LOCATION						ARRIVE TO LOCATION, CHECK IN WITH COMPANY MAN, 13.5" OH TO 1547', 9 5/8" 36PPF CSG TO 1537', SJ 45', MUD IN HOLE 8.9PPG
5	4:15	STEACS RIG UP						SAFETY MEETING ON SPOTTING AND RIG UP WITH BJ CREW
6	4:30	RIG UP IRON						RIG UP IRON AND HOSES
7	5:00	WAITING ON RIG						WAITING ON RIG TO RUN CASING
8	7:00	STEACS PRE JOB						PRE JOB SAFETY MEETING WITH BJ CREW, RIG CREW, AND COMPANY MAN
9	7:36	START JOB						START JOB
10	7:37	FILL LINES		8.33	3	5	100	FILL LINES 5BBLs DYED FRESH WATER
11	7:40	TEST LINES					2500	TEST LINES 2500PSI
12	7:43	PUMP SPACER	56	8.33	5	15	250	PUMP 15BBLs DYED FRESH WATER, TOTAL PUMPED 20BBLs
13	7:49	PUMP CEMENT		14.5	5	173	350	PUMP 173BBLs PRIMARY CEMENT @ 14.5PPG (698SKS 1.39YLD 6.78GPS)
14	8:26	SHUTDOWN						SHUTDOWN TO DROP PLUG
15	8:27	DROP PLUG						DROP TOP PLUG
16	8:30	DISPLACEMENT		8.33	8	100	1000	START DISPLACEMENT
17	8:44	CEMENT TO SURFACE						CEMENT TO SURFACE @ AWAY GETTING 35BBLs BACK
18	8:48	SLOW RATE		8.33	3	15	700	SLOW RATE TO BUMP PLUG
19	8:51	BUMP PLUG						BUMP PLUG FINAL CIRCULATING PRESSURE 700PSI BROUGHT TO 1200PSI HELD FOR 2MIN
20	8:53	CHECK FLOATS						CHECK FLOATS GETTING 1/2BBL BACK TO THE PUMP
21	8:54	CASING TEST		8.33			500	CASING TEST 500PSI FOR 15MIN
22	9:09	END JOB						END JOB
23	9:15	STEACS RIG DOWN						SAFETY MEETING ON RIGGING DOWN
24	9:30	RIG DOWN IRON						RIG DOWN IRON
25	10:30	JM STEACS						PRE JOURNEY MANAGEMENT WITH BJ CREW TO DISCUSS ROUTES AND HAZARDS
26	10:45:00	DEPART LOCATION						DEPART LOCATION

Customer: Bonanza Creek
Well Number: 31-35-2MRLNC
Lease Info: North Platte



Print Date/Time

3/27/2018 9:29:50 AM



	Name	Y value	X value/time stamp	Tag name Y
1	DS - Press (PSI)	13.0 i.	3/27/2018 9:10:30 AM i.	Cementer\DS_DISCHARGE_PRESS_DIAL
2	DH - Density (PPG)	8.64	3/27/2018 9:10:28 AM	Cementer\DENSITY2_ACTUAL_RATE
3	Down Hole Total (BBLs)	119.3 i.	3/27/2018 9:10:30 AM i.	Cementer\DOWNHOLE_FLOW_TOTAL
4	Combined rate (BPM)	0.00 i.	3/27/2018 9:10:30 AM i.	Cementer\Flow_Combined
5				

Source: Control1 9:29:45 AM