



Bonanza Creek Energy

Surface Post Job Report

North Platte K-35-34MRLNB

S:26 T:5N R:63W Weld CO

Quote #:

I Execution #:



Bonanza Creek Energy

Attention: Mr. Joel Dill | (720) 633-5871 | JDill@bonanzacrk.com

Bonanza Creek Energy | 410 17th St Suite 1400 | Denver, CO. 80202

Dear Mr. Joel Dill,

Thank you for the opportunity to provide cementing services on this well. BJ Services strives to achieve complete customer satisfaction. If you have any questions regarding the services or data provided, please contact BJ Services at any time.

Sincerely,
Jacob Ojeda
Field Engineer I | (763) 516-3012 | jacob.ojeda@bjservices.com

Field Office 1716 East Allison Rd., Cheyenne WY, 82007
Phone: (307) 638-5585

Sales Office 999 18th St. Suite 1200 Denver, CO 80202
Phone: (281) 408-2361

Cementing Treatment



Start Date	3/29/18	Well	North Platte K-35-34MRLNB
End Date	3/29/18	State/Province	CO
Client	BONANZA CREEK ENERGY	API	05-123-46389
Client Field Rep	Kenneth Graham	Rig	Xtreme 19
Service Supervisor	Roger Acuna	Type of Job	Surface
District	Cheyenne, WY		

WELL GEOMETRY

Type	ID (in)	OD (in)	Wt. (lb/ft)	MD (ft)	TVD (ft)	Excess(%)	Grade	Thread
Open Hole	13.50			1,512.00	1,512.00	30.00		
Casing	8.92	9.63	36.00	1,502.00	1,502.00		J-55	8RD

Shoe Length (ft): 45'

HARDWARE

Bottom Plug Used?	No	Max Casing Pressure - Rated (psi)	2816psi
Top Plug Used?	Yes	Max Casing Pressure - Operated (psi)	1500psi
Top Plug Provided By	Bonanza Creek	Pipe Movement	No
Top Plug Size	9 5/8"	Job Pumped Through	2" Iron
Centralizers Used	Yes	Top Connection Thread	8RD
Centralizers Quantity	15	Top Connection Size	9 5/8"
Centralizers Type	Bow Spring		
Landing Collar Depth (ft)	1,457		

Cementing Treatment



CIRCULATION PRIOR TO JOB

Well Circulated By	Rig	Solids Present at End of Circulation	No
Circulation Prior to Job	Yes	10 sec SGS	2
Circulation Time (min)	45min	10 min SGS	2
Circulation Rate (bpm)	7.8bpm	30 min SGS	3
Circulation Volume (bbls)	350bbls	Flare Prior to/during the Cement Job	No
Lost Circulation Prior to Cement Job	No	Gas Present	No
Mud Density In (ppg)	8.7ppg		
Mud Density Out (ppg)	8.7ppg		
PV Mud In	6		
PV Mud Out	6		
YP Mud In	2		
YP Mud Out	2		

TEMPERATURE

Ambient Temperature (°F)	30°	Slurry Cement Temperature (°F)	50°
Mix Water Temperature (°F)	50°	Flow Line Temperature (°F)	70°

BJ FLUID DETAILS

Fluid Type	Fluid Name	Density (ppg)	Yield (Cu Ft/sk)	H2O Req. (gals/sk)	Planned Top of Fluid (Ft)	Length (Ft)	Vol (sk)	Vol (Cu Ft)	Vol (bbls)
Spacer / Pre-Flush / Flush	Water (Pre-flush)	8.3308			0.00				20.0000
Tail Slurry	BJCem S100.3.XC	14.5000	1.3901	6.78	0.00	1,502.00	698	971.0000	172.8000
Displacement Final	Water	8.3300			0.00			0.0000	112.7000

Cementing Treatment



Fluid Type	Fluid Name	Component	Concentration	UOM
Tail Slurry	BJCem S100.3.XC	CEMENT, ASTM TYPE III	100.0000	PCT
Tail Slurry	BJCem S100.3.XC	FOAM PREVENTER, FP-13L	0.0300	GALS/SK

DISPLACEMENT AND END OF JOB SUMMARY

Displaced By	BJ Services	Amount of Cement Returned/Reversed	22bbls
Calculated Displacement Volume (bbls)	112.7bbls	Method Used to Verify Returns	Visual
Actual Displacement Volume (bbls)	112.7bbls	Amount of Spacer to Surface	20bbls
Did Float Hold?	Yes	Pressure Left on Casing (psi)	0psi
Bump Plug	Yes	Amount Bled Back After Job	½ bbl
Bump Plug Pressure (psi)	1300psi	Total Volume Pumped (bbls)	305.7bbls
Were Returns Planned at Surface	Yes	Top Out Cement Spotted	No
Cement returns During Job	22bbls	Lost Circulation During Cement Job	No

Customer Name BONANZA CREEK

Well Name NORTH PLATTE K-35-34MRLNB

Job Type SURFACE

District CHEYENNE

Supervisor ROGER ACUNA

Engineer



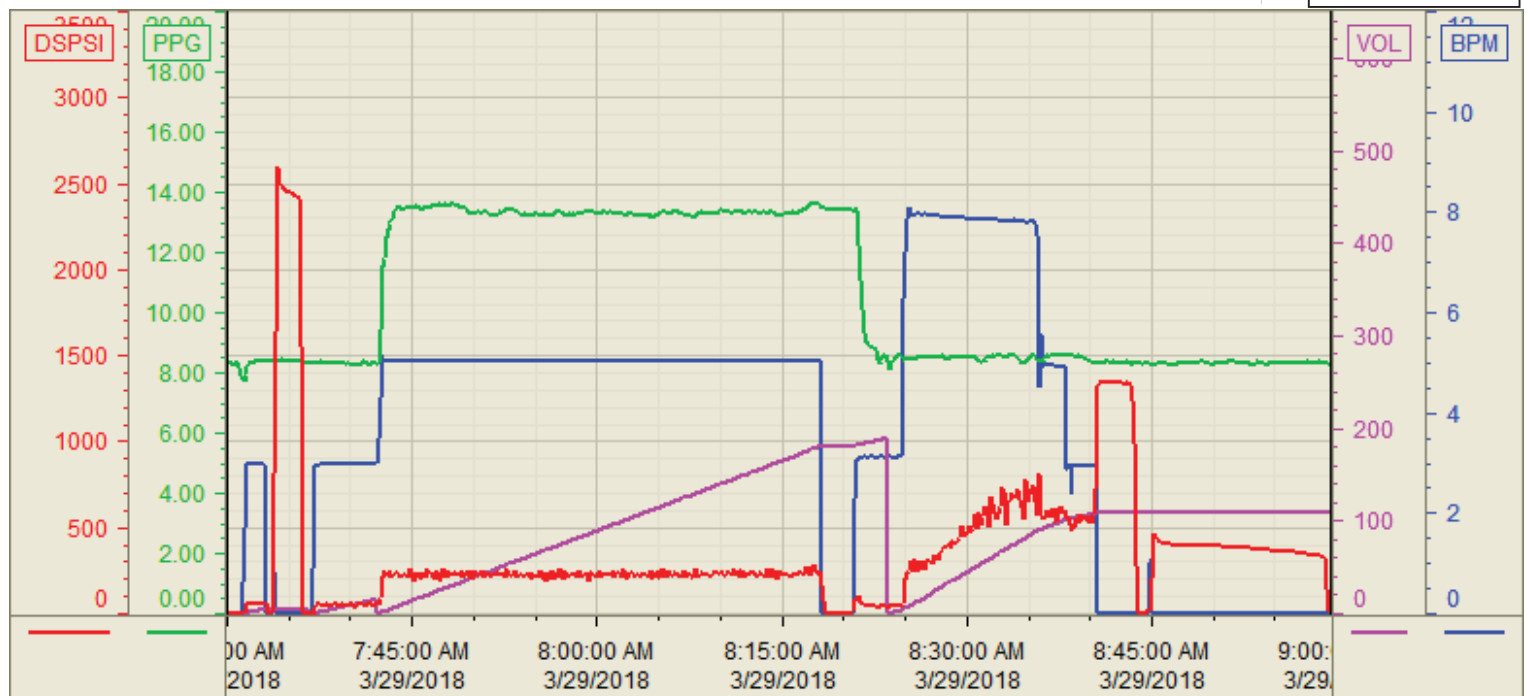
Seq No.	Start Date/Time	Category	Event	Equipment	Event ID	Density (lb/gal)	Pump Rate (bpm)	Pump Vol (bbls)	Pipe Pressure (psi)	Comments
1	3/28/2018 19:30		CALLED OUT							CALLED OUT TO LOCATION, RTS 01:30
2	23:00		JM STEACS							JM STEACS WITH BJ CREW TO DISCUSS ROUTES AND HAZARDS
3	23:15		DEPART KERSEY CO							DEPART KERSEY CO GAS STATION
4	23:30		ARRIVE TO LOCATION							ARRIVE TO LOCATION , CHECK IN WITH COMPANY MAN, 13.5" OH TO 1512', 9 5/8" 36PPF CSG TO 1502', 45' SJ, 8.7PPG MUD
5	23:45		STEACS RI G UP							STEACS SPOT AND RIG UP MEETING WITH BJ CREW TO DISCUSS HAZARDS
6	3/29/2018 0:00		RIG UP IRON							RIG UP IRON AND HOSES
7	0:30		WAITIN ON RIG							WAITING ON RIG TO RUN CASING
8	7:00		STEACS PRE JOB							STEACS PRE JOB MEETING WITH BJ CREW, RIG CREW, AND COMPANY MAN
9	7:30		START JOB							START JOB
10	7:31		FILL LINES			8.33	3	5	65	FILL LINES 5BBLs DYED FRESH WATER
11	7:33		TEST LINES						2500	TEST LINES 2500PSI
12	7:36		PUMP SPACER		56	8.33	3	15	150	PUMP 15BBLs DYED FRESH WATER SPACER, TOTAL PUMPED 20BBLs
13	7:42		PUMP CEMENT			14.5	5	173	450	PUMP 173BBS PRIMARY CMT @14.5PPG (698SKS 1.39YLD 6.78GPG)
14	8:18		SHUTDOWN							SHUTDOWN TO DROP PLUG
15	8:19		DROP PLUG							DROP TOP PLUG
16	8:20		DISPLACEMENT			8.33	8	100	1000	PUMP FRESH WATER DISPLACEMENT
17	8:35		CEMENT TO SURFACE							22BBLs CEMENT TO SURFACE
18	8:38		SLOW RATE			8.33	3	12.7	800	SLOW RATE TO BUMP PLUG
19	8:40		BUMP PLUG							BUMP PLUG FINAL CIRCULATING PRESSURE 800PSI BROUGHT TO 1300PSI HELD FOR 3 MIN
20	8:43		CHECK FLOATS		68					CHECK FLOATS, 1/2 BBL BACK TO THE PUMP
21	8:45		CASING TEST							500 PSI CASING TEST FOR 15MIN
22	9:00		END JOB							END JOB
23	9:15		STEACS RIG DOWN							STEACS RIG DOWN MEETING WITH BJ CREW TO DISCUSS HAZARDS
24	9:30		RIG DOWN IRON							RIG DOWN IRON AND HOSES
25	10:30		JM STEACS							JM STEACS WITH BJ CREW TO DISCUSS ROUTES AND HAZARDS
26	10:45		DEPART LOCATION							DEPART LOCATION

Customer: Bonanza Creek
Well Number: K-35-34MRLNB
Lease Info: North Platte



Print Date/Time

3/29/2018 9:14:06 AM



	Name	Y value	X value/time stamp	Tag name Y
1	DS - Press(PSI)	0.0	3/29/2018 7:29:58 AM	CementerDS_DISCHARGE_PRESS_DIAL
2	DH - Density (PPG)	8.36 i.	3/29/2018 7:30:00 AM i.	CementerDENSITY2_ACTUAL_RATE
3	Down Hole Total (BBLs)	-0.0 i.	3/29/2018 7:30:00 AM i.	CementerDOWNHOLE_FLOW_TOTAL
4	Combined rate (BPM)	0.00 i.	3/29/2018 7:30:00 AM i.	CementerFlow_Combined
5				

Source: Control1 9:14:01 AM