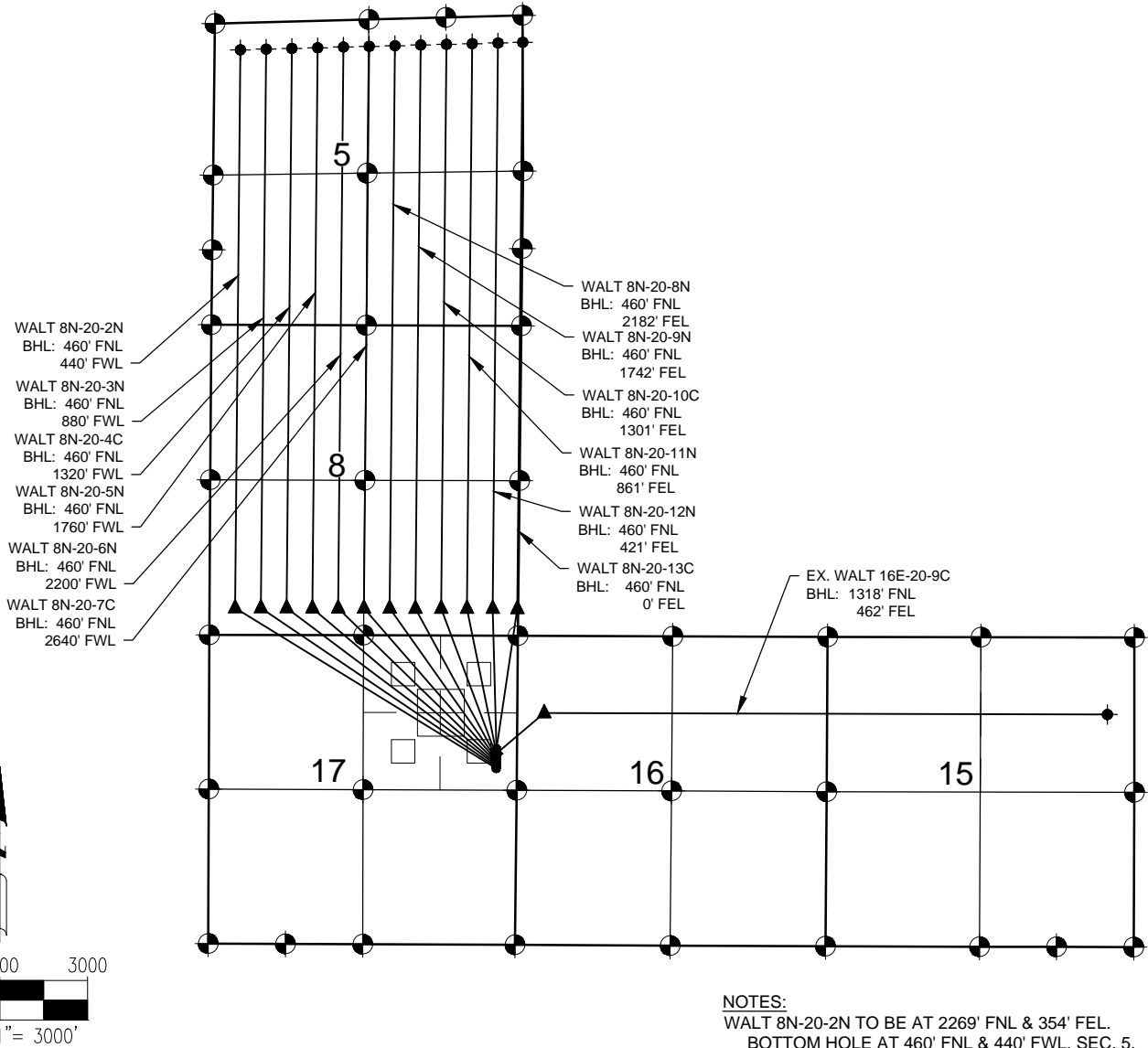


WALT 17-E PAD MULTI-WELL PLAN



LEGEND

- = EXISTING MONUMENT
- = CALCULATED POSITION
- = PROPOSED WELL
- ◆ = EXISTING WELL
- ◆ = BOTTOM HOLE
- ▲ = LANDING POINT
- LP = LANDING POINT
- BHL = BOTTOM HOLE LOCATION

NOTES:

- THIS FIELD SURVEY CONFORMS TO THE MINIMUM STANDARDS SET BY THE C.O.G.C.C., RULE NO. 215
- ALL DISTANCES AND BEARINGS SHOWN HEREON ARE GROUND VALUES AS GPS MEASURED IN THE FIELD, WITH TIES TO WELLS MEASURED PERPENDICULAR TO LINES SHOWN HEREON. THIS LOW DISTORTION PROJECTION (LDP) IS BASED ON THE NORTH AMERICAN DATUM OF 1983, U.S. SURVEY FOOT WITH A LATITUDE ORIGIN OF 40.47960767°N, A CENTRAL MERIDIAN LONGITUDE OF 104.8890573°W, AND A SCALE FACTOR ON THE CENTRAL MERIDIAN OF 1.000228 (EXACT). THE LDP BASIS OF BEARINGS IS GEODETIC NORTH.
- FIELD VERIFICATION OF MONUMENTS COMPLETED WITHIN 1 YEAR OF SIGNATURE DATE, UNLESS OTHERWISE NOTED.

NOTES:

- WALT 8N-20-2N TO BE AT 2269' FNL & 354' FEL.
- BOTTOM HOLE AT 460' FNL & 440' FWL, SEC. 5.
- WALT 8N-20-3N TO BE AT 2241' FNL & 354' FEL.
- BOTTOM HOLE AT 460' FNL & 880' FWL, SEC. 5.
- WALT 8N-20-4C TO BE AT 2213' FNL & 354' FEL.
- BOTTOM HOLE AT 460' FNL & 1320' FWL, SEC. 5.
- WALT 8N-20-5N TO BE AT 2185' FNL & 354' FEL.
- BOTTOM HOLE AT 460' FNL & 1760' FWL, SEC. 5.
- WALT 8N-20-6N TO BE AT 2157' FNL & 353' FEL.
- BOTTOM HOLE AT 460' FNL & 2200' FWL, SEC. 5.
- WALT 8N-20-7C TO BE AT 2129' FNL & 353' FEL.
- BOTTOM HOLE AT 460' FNL & 2640' FWL, SEC. 5.
- WALT 8N-20-8N TO BE AT 2101' FNL & 353' FEL.
- BOTTOM HOLE AT 460' FNL & 2182' FEL, SEC. 5.
- WALT 8N-20-9N TO BE AT 2073' FNL & 353' FEL.
- BOTTOM HOLE AT 460' FNL & 1742' FEL, SEC. 5.
- WALT 8N-20-10C TO BE AT 2045' FNL & 353' FEL.
- BOTTOM HOLE AT 460' FNL & 1301' FEL, SEC. 5.
- WALT 8N-20-11N TO BE AT 1989' FNL & 353' FEL.
- BOTTOM HOLE AT 460' FNL & 861' FEL, SEC. 5.
- WALT 8N-20-12N TO BE AT 1961' FNL & 353' FEL.
- BOTTOM HOLE AT 460' FNL & 421' FEL, SEC. 5.
- WALT 8N-20-13C TO BE AT 1933' FNL & 353' FEL.
- BOTTOM HOLE AT 460' FNL & 0' FEL, SEC. 5.

EX. WALT 16E-20-9C IS AT 2017' FNL & 354' FEL.