

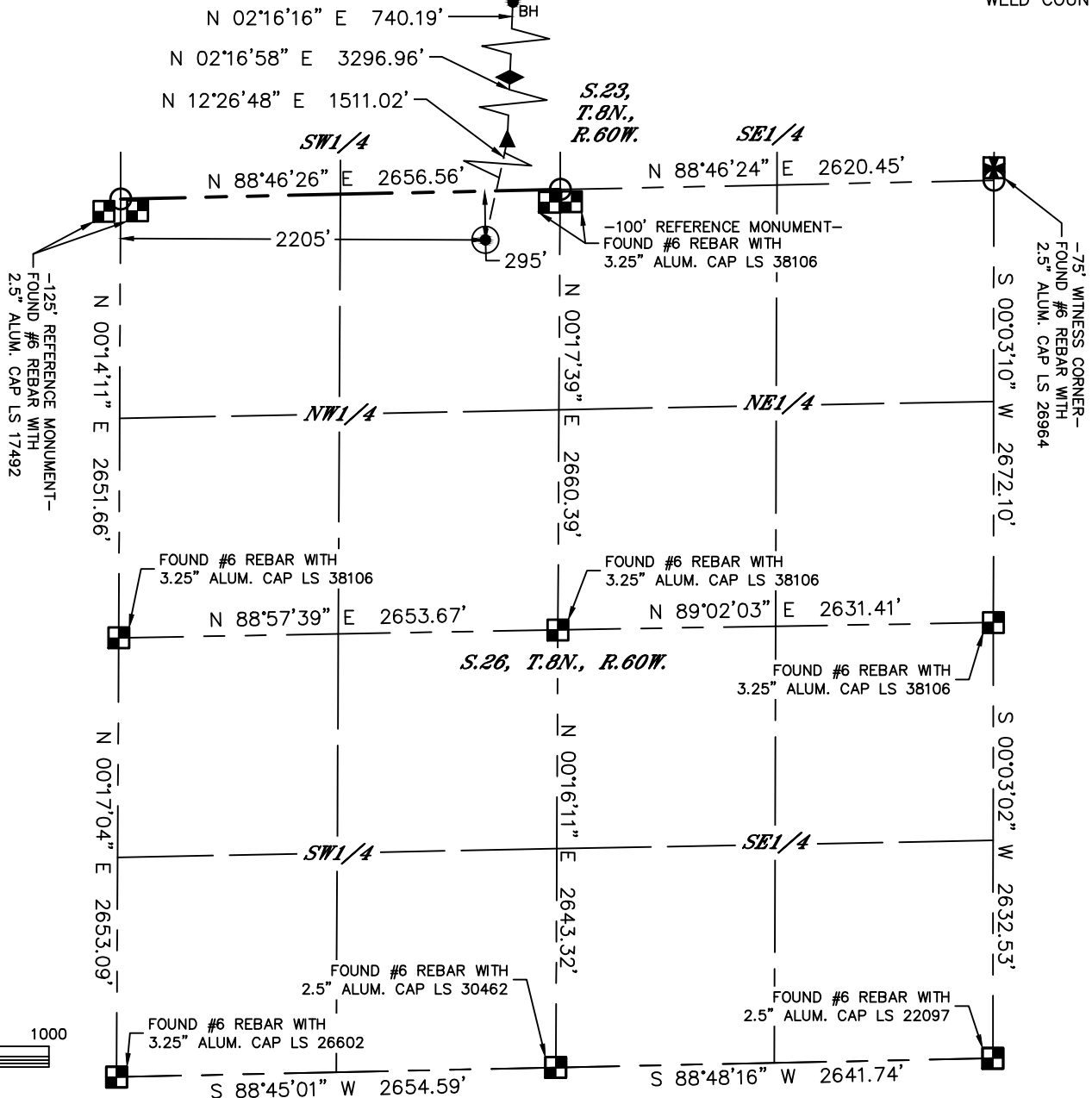


Lat40°, Inc. 6250 W. 10th Street, Unit 2, Greeley, CO 970-515-5294

# WELL LOCATION CERTIFICATE

SECTION: 26  
TOWNSHIP: 8N  
RANGE: 60W  
6TH. P.M.  
WELD COUNTY, CO

EWS 1B



CLIENT: PETROTEK ENGINEERING				LANDMAN: JEREMIAH DEMUTH			
INSTRUMENT OPERATOR: JAKE STILLE				SURVEY DATE: 4/30/2018		SURFACE USE: RANGE LAND	
SHL FOOTAGE	SHL LAT°	SHL LONG°	SHL PDOP	SHL ELEV (FT.)	SHL 1/4/1/4	SHL S-T-R	
295 FNL 2205 FWL	40.63985	-104.06021	2.2	4908	NENW	26-8-60	

TIZ LAT°	TIZ LONG°	TIZ S-T-R
40.65292	-104.05828	23-8-60

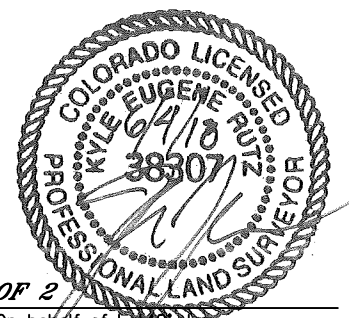
BHL FOOTAGE	BHL LAT°	BHL LONG°	BHL S-T-R	AP LAT°	AP LONG°	AP S-T-R
102 FNL 2630 FEL	40.65495	-104.05813	23-8-60	40.64389	-104.05895	23-8-60

## LEGEND

- = ALIQUOT MONUMENT AS DESCRIBED
- = CALCULATED POSITION
- = SURFACE HOLE LOCATION (SHL)
- ◆ = ANGLE POINT (AP)
- ▲ = TOP OF INJECTION ZONE (TIZ)
- <sub>BH</sub> = BOTTOM HOLE LOCATION (BHL)
- ⊙ = EXISTING WELL
- ⊙ = ABANDONED WELL

## NOTE:

- 1) Bearings shown are Grid Bearings of the Colorado State Plane Coordinate System, North Zone, North American Datum 1983. The lineal dimensions as contained herein are based upon the "U.S. Survey Foot."
- 2) Distances to section lines measured at 90 degrees from said section lines.
- 3) Ground elevations are based on an observed GPS elevation (NAVD 1988 DATUM).
- 4) Latitude and Longitude shown are (NAD 83 DATUM).
- 5) IMPROVEMENTS: See LOCATION DRAWING for all visible improvements within 500' of oil and gas location.
- 6) This map does not represent a boundary survey.



SHEET 1 OF 2

Kyle E. Rutz-On behalf of Lat40°, Inc.  
Colorado Licensed Professional Land Surveyor No. 38307  
DATE: 6/4/2018  
PROJECT#: 2017161

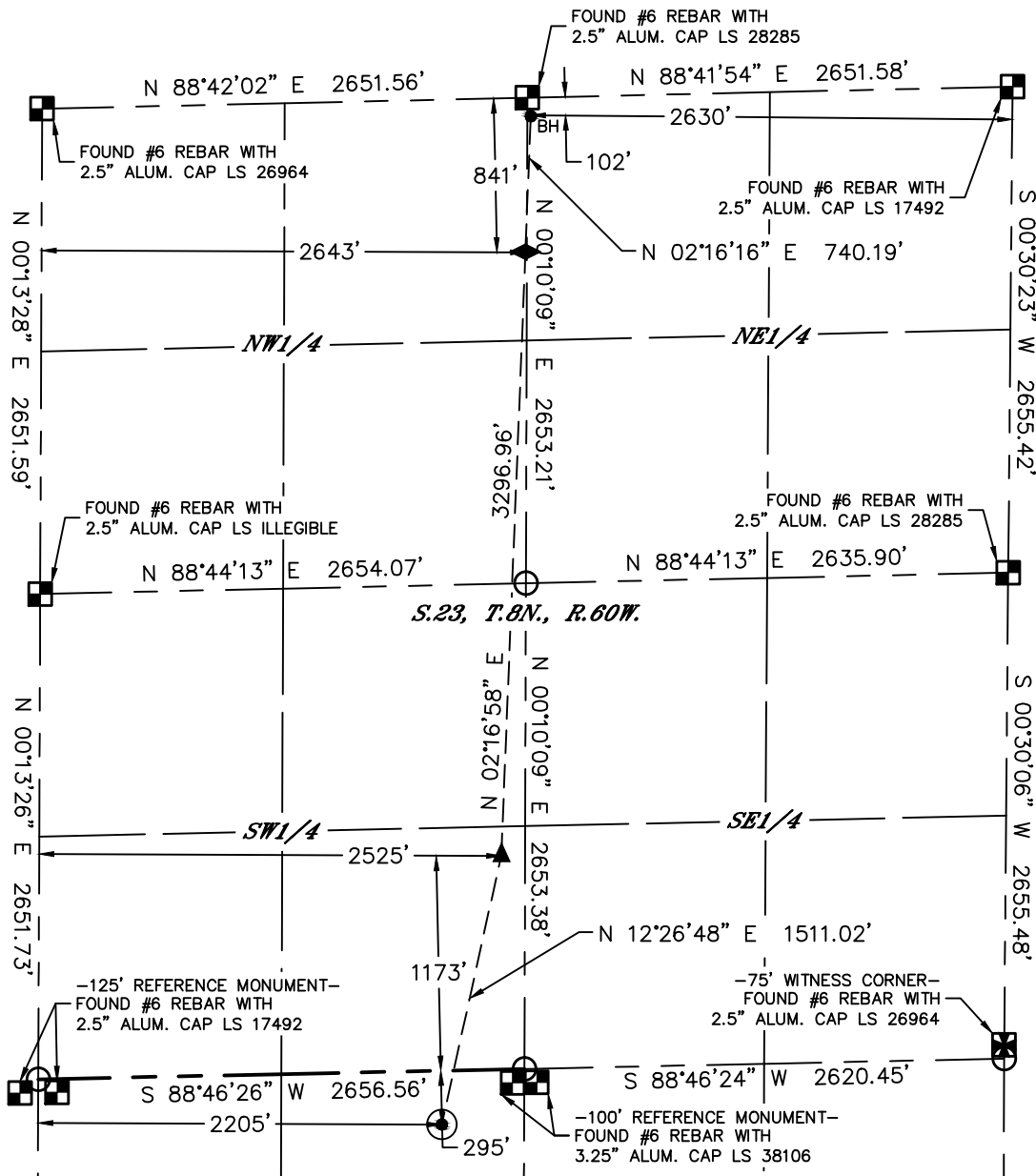


Lat40°, Inc. 6250 W. 10th Street, Unit 2, Greeley, CO 970-515-5294

# WELL LOCATION CERTIFICATE

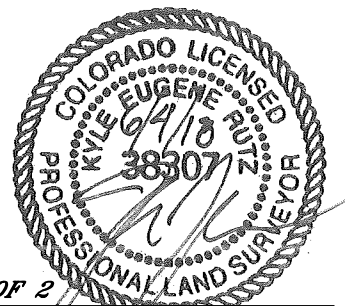
EWS 1B

SECTION: 26  
TOWNSHIP: 8N  
RANGE: 60W  
6TH. P.M.  
WELD COUNTY, CO



## LEGEND

- = ALIQUOT MONUMENT AS DESCRIBED
- = CALCULATED POSITION
- = SURFACE HOLE LOCATION (SHL)
- ▲ = ANGLE POINT (AP)
- ◆ = TOP OF INJECTION ZONE (TIZ)
- <sub>BH</sub> = BOTTOM HOLE LOCATION (BHL)
- ⊙ = EXISTING WELL
- ⊙ = ABANDONED WELL



SHEET 2 OF 2

Kyle E. Rutz—On behalf of Lat40°, Inc.  
Colorado Licensed Professional Land Surveyor No. 38307  
DATE: 6/4/2018  
PROJECT#: 2017161