

LEGEND:

 PROPOSED LOCATION



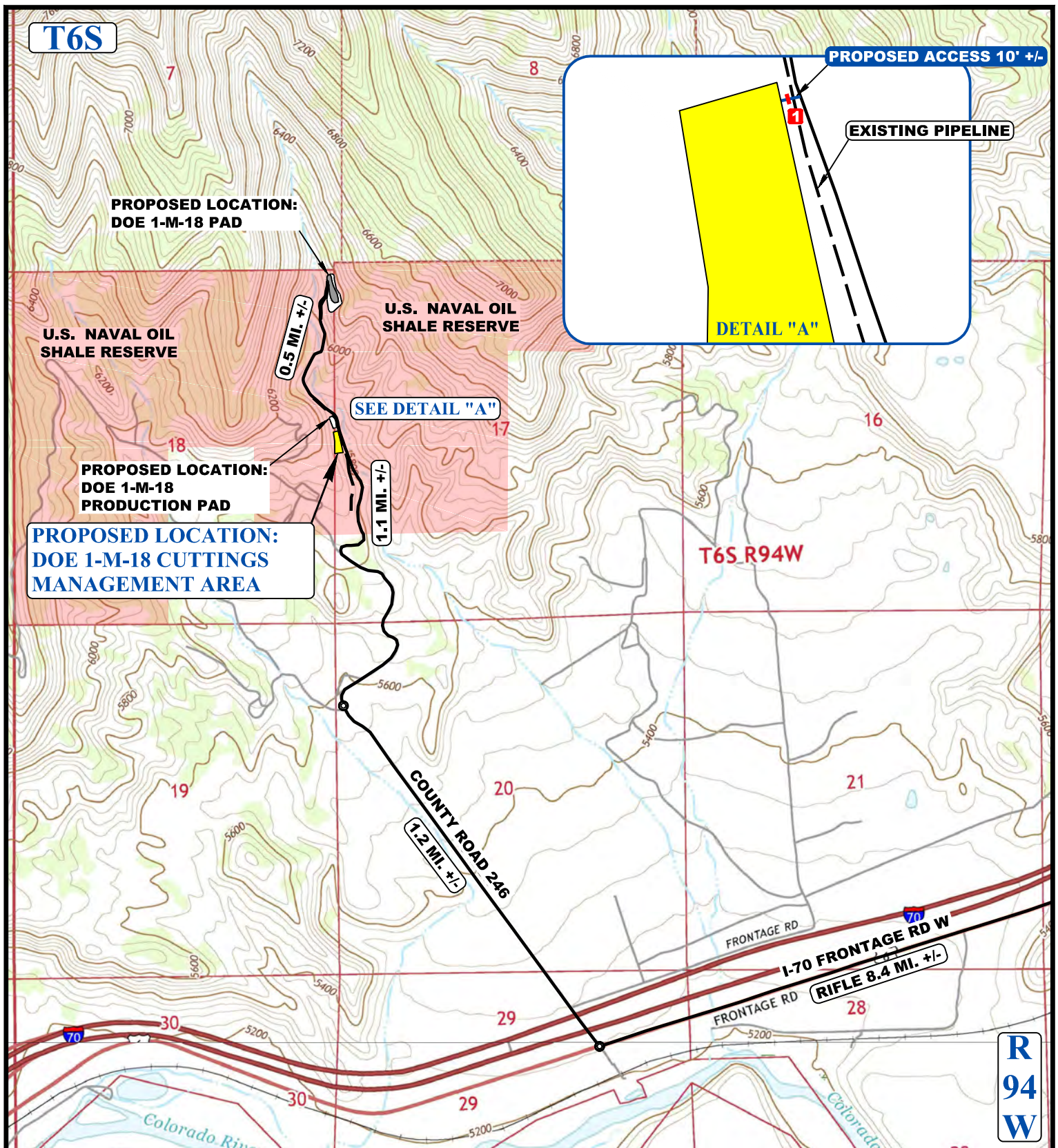
UELS, LLC
 Corporate Office * 85 South 200 East
 Vernal, UT 84078 * (435) 789-1017



TEP Rocky Mountain LLC

DOE 1-M-18 CUTTINGS MANAGEMENT AREA
 SECTIONS 17 & 18, T6S, R94W, 6th P.M.
 GARFIELD COUNTY, COLORADO

SURVEYED BY	CODY RICH	04-26-18	SCALE
DRAWN BY	Z.T.	06-11-18	1 : 100,000
ACCESS ROAD MAP			PLAT #3A



NOTE: PARCEL DATA SHOWN HAS BEEN OBTAINED FROM VARIOUS SOURCES AND SHOULD BE USED FOR MAPPING, GRAPHIC AND PLANNING PURPOSES ONLY. NO WARRANTY IS MADE BY UINAH ENGINEERING AND LAND SURVEYING (UELS) FOR ACCURACY OF THE PARCEL DATA.

LEGEND:

- EXISTING ROAD
- PROPOSED ROAD
- EXISTING PIPELINE
- 1 INSTALL 24" CULVERT



UELS, LLC
Corporate Office * 85 South 200 East
Vernal, UT 84078 * (435) 789-1017



TEP Rocky Mountain LLC

DOE 1-M-18 CUTTINGS MANAGEMENT AREA
SECTIONS 17 & 18, T6S, R94W, 6th P.M.
GARFIELD COUNTY, COLORADO

SURVEYED BY	CODY RICH	04-26-18	SCALE
DRAWN BY	Z.T.	06-11-18	1 : 24,000
ACCESS ROAD MAP			PLAT #3B