



PHOTO: VIEW OF LOCATION STAKE

CAMERA ANGLE: SOUTHERLY



PHOTO: VIEW OF LOCATION STAKE

CAMERA ANGLE: WESTERLY

TEP Rocky Mountain LLC

DOE 1-M-18 CUTTINGS MANAGEMENT AREA
SECTIONS 17 & 18, T6S, R94W, 6th P.M.
GARFIELD COUNTY, COLORADO

TAKEN BY	CODY RICH	04-26-18	
DRAWN BY	Z.T.	06-11-18	
LOCATION PHOTOS			PHOTO 3



UELS, LLC
Corporate Office * 85 South 200 East
Vernal, UT 84078 * (435) 789-1017



PHOTO: VIEW OF LOCATION STAKE

CAMERA ANGLE: NORTHERLY



PHOTO: VIEW OF LOCATION STAKE

CAMERA ANGLE: EASTERLY

TEP Rocky Mountain LLC

DOE 1-M-18 CUTTINGS MANAGEMENT AREA
SECTIONS 17 & 18, T6S, R94W, 6th P.M.
GARFIELD COUNTY, COLORADO

TAKEN BY	CODY RICH	04-26-18	
DRAWN BY	Z.T.	06-11-18	
LOCATION PHOTOS			PHOTO 2



UELS, LLC
Corporate Office * 85 South 200 East
Vernal, UT 84078 * (435) 789-1017

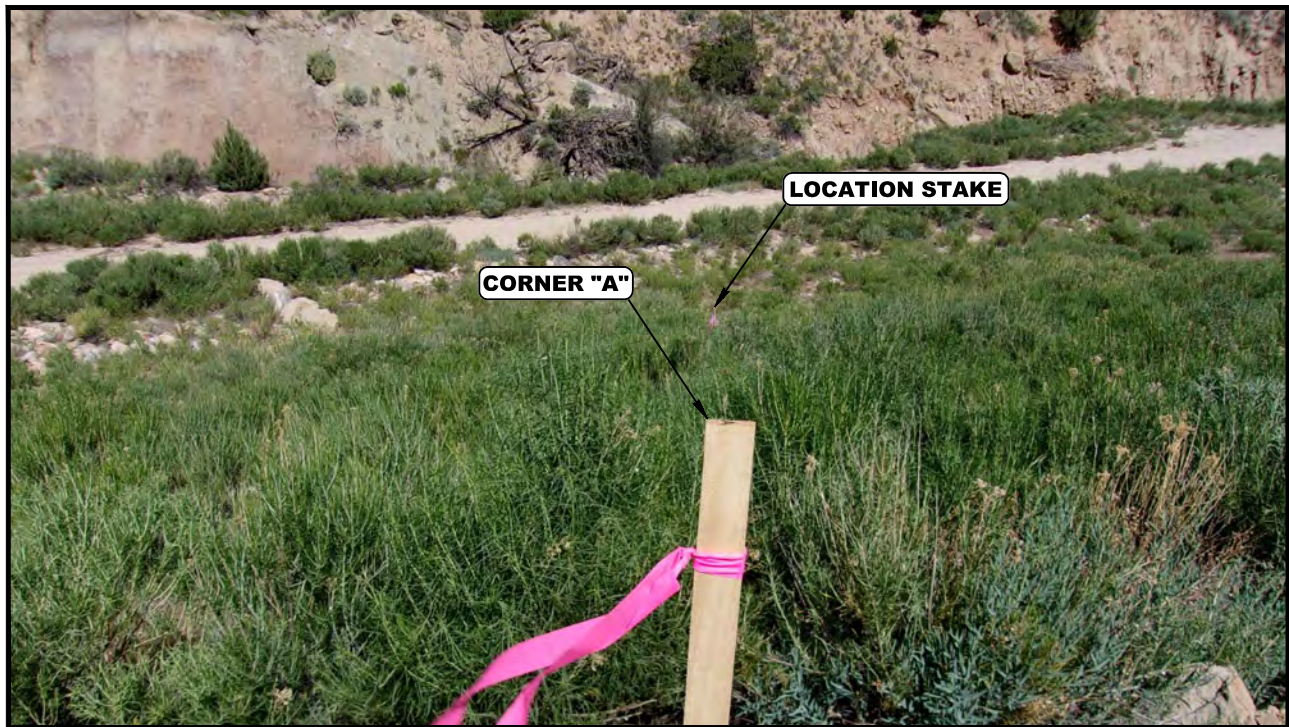


PHOTO: VIEW FROM CORNER "A" TO LOCATION STAKE

CAMERA ANGLE: SOUTHEASTERLY



PHOTO: VIEW OF LOCATION STAKE

CAMERA ANGLE: NORTHERLY

TEP Rocky Mountain LLC

DOE 1-M-18 CUTTINGS MANAGEMENT AREA
SECTIONS 17 & 18, T6S, R94W, 6th P.M.
GARFIELD COUNTY, COLORADO

TAKEN BY	CODY RICH	04-26-18	
DRAWN BY	Z.T.	06-11-18	
LOCATION PHOTOS			PHOTO 1



UELS, LLC
Corporate Office * 85 South 200 East
Vernal, UT 84078 * (435) 789-1017