

T6S, R94W, 6th P.M.

TEP Rocky Mountain LLC

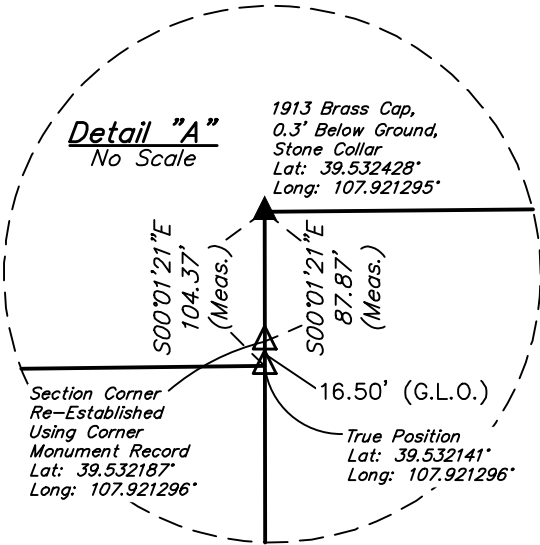
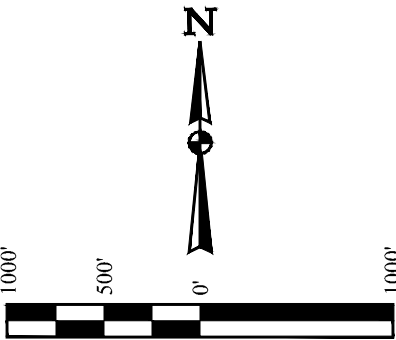
FEDERAL RWF 442-18
LOT 4, SECTION 17, T6S, R94W, 6th P.M.
GARFIELD COUNTY, COLORADO

BASIS OF BEARINGS

BASIS OF BEARINGS IS A G.P.S. OBSERVATION

BASIS OF ELEVATION

SPOT ELEVATION AT THE NORTHWEST CORNER OF SECTION 30, T5S, R95W, 6th P.M. TAKEN FROM THE FORKED GULCH QUADRANGLE, COLORADO, GARFIELD COUNTY, 7.5 MINUTE SERIES (TOPOGRAPHICAL MAP) PUBLISHED BY THE UNITED STATES DEPARTMENT OF THE INTERIOR, GEOLOGICAL SURVEY. SAID ELEVATION IS MARKED AS BEING 5966 FEET.



CERTIFICATE

THIS IS TO CERTIFY THAT THE ABOVE PLAT WAS PREPARED FROM FIELD NOTES OF ACTUAL SURVEYS MADE BY ME OR UNDER MY SUPERVISION AND THAT THE LOCATION HAS BEEN STAKED ON THE GROUND AS SHOWN ON THE PLAT AND THAT THE SAME ARE TRUE AND CORRECT TO THE BEST OF MY KNOWLEDGE AND BELIEF.

REGISTERED LAND SURVEYOR
REGISTRATION NO. 130
STATE OF COLORADO 66513-18

REV: 1 06-13-18 C.D.L. (NAME CHANGE)



UELS, LLC
Corporate Office * 85 South 200 East
Vernal, UT 84078 * (435) 789-1017

SURVEYED BY	BART HUNTING, J.L.	05-23-18	SCALE
DRAWN BY	C.D.L.	05-24-18	1" = 1000'

WELL LOCATION PLAT

LEGEND:

- 90° SYMBOL
- PROPOSED WELLHEAD.
- TARGET BOTTOM HOLE.
- SECTION CORNERS LOCATED. (NAD 83)
- SECTION CORNERS RE-ESTABLISHED. (Not Set on Ground.) (NAD 83)

PDOP = 1.8

NAD 83 (SURFACE LOCATION)	NAD 83 (TARGET BOTTOM HOLE)
LATITUDE = 39°31'51.39" (39.530942)	LATITUDE = 39°31'37.20" (39.527000)
LONGITUDE = 107°55'16.41" (107.921225)	LONGITUDE = 107°55'19.00" (107.921944)
STATE PLANE NAD 83 (CO. CEN.)	STATE PLANE NAD 83 (CO. CEN.)
N: 1627374.70 E: 2317149.50	N: 1625944.04 E: 2316907.94