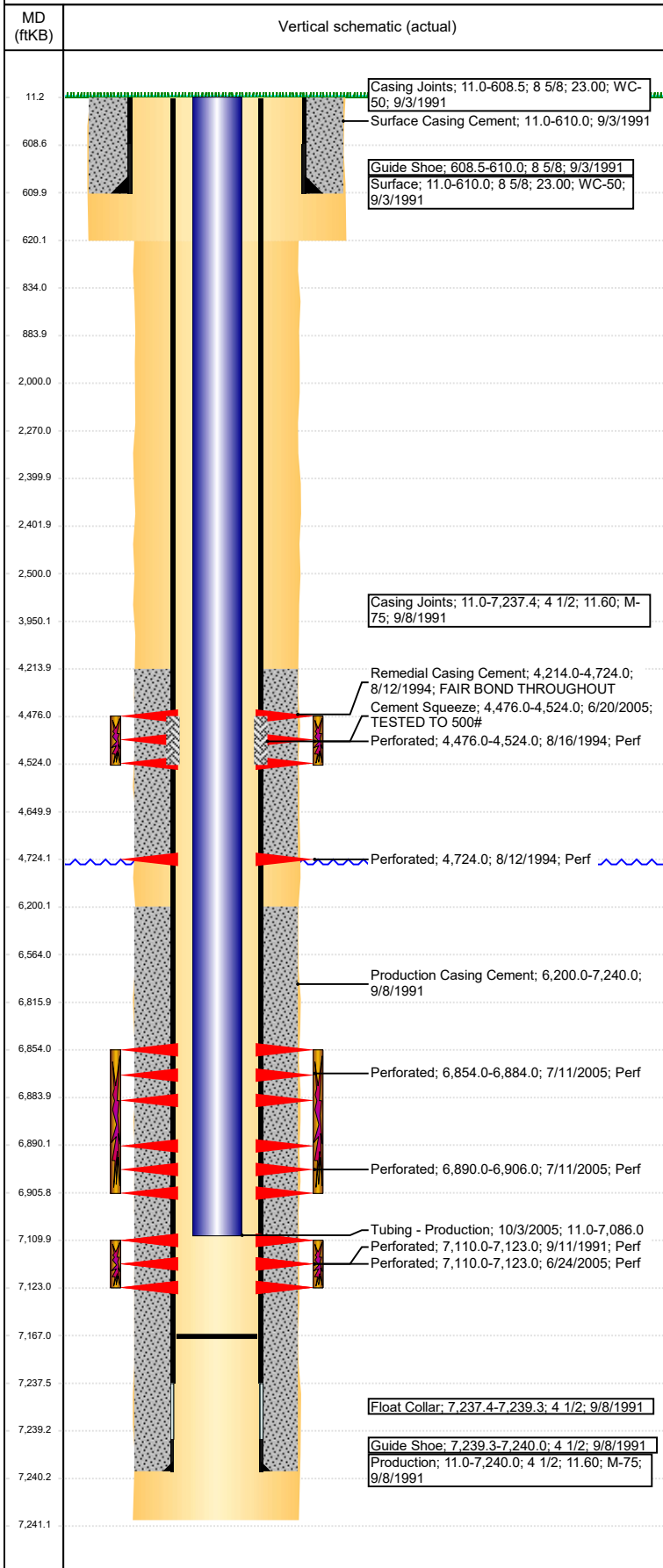


Wellbore Schematic Input Report

Well Name: UPRC 13-14J

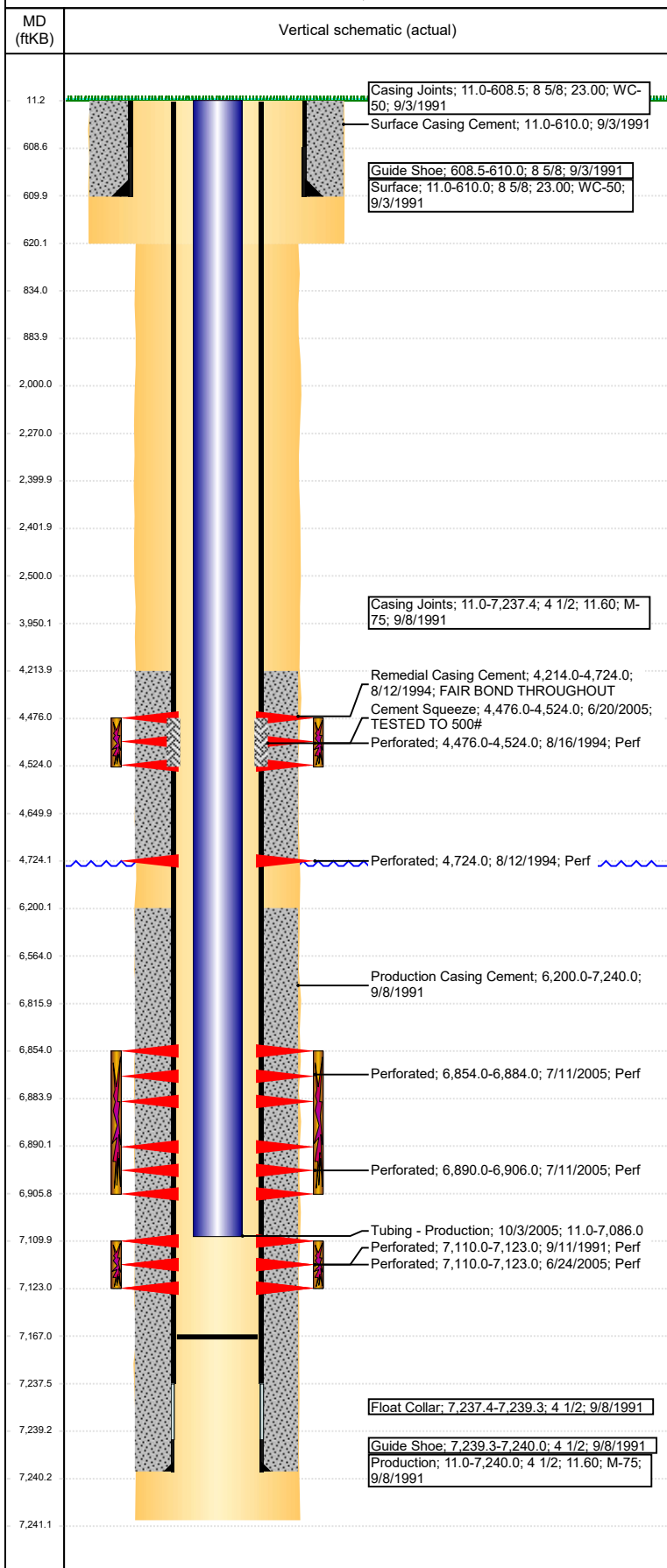
VERTICAL - ORIGINAL HOLE, 6/26/2018 5:26:33 PM



Well Header							
API 05-123-15230		Well Report Center 422121666			Well Configuration Type VERTICAL		
Original KB Elevation (ft) 4,856		KB - GL / MSL (ftKB) 11.00		Spud Date 9/3/1991		P & A Date	
Production Route Watt - C1-09			Well Production Status PR				SoRT Ignore No
Directions To Well				Actual Latitude (°) 40.22028489		Actual Longitude (°) -104.61437611	
Comment DISCREPANCY IN TD: ST & DRL RPT-7240', LOG DEPTH DRILLER-7241' (USED LOG TD) DISCREPANCY IN PROD CSG: ST RPT-7242.72' DRL RPT-7240' (USED DRL RPT SET DEPTH)							
Congressional Location							
Quarter 3 SE	Quarter 4 SW	Section 13	Township 3	Twntshp N/S Dir N	Range 65	Range E/W Dir W	
Rig Operator							
Rig Operator							
Plug Back Total Depths							
Date	Depth (ftKB)	Method			Com		
9/30/2005	7,167.0	TAG			CLEAN OUT & LAND TBG		
Wellbore Sections							
Section Des		Size (in)		Act Top, MD (ftKB)		Act Btm, MD (ftKB)	
SURFACE		12 1/4		11		620	
PRODUCTION		7 7/8		620		7,241	
Zone Statuses							
Zone Name		Status Date			Status		
SUSSEX		6/20/2005			AB		
NIOBRARA		10/5/2005			PR		
CODELL		10/5/2005			PR		
Casing Strings							
Surface, 610.0ftKB							
Casing Description	Run Date	OD (in)	Wt/Len (l...	Grade	Top, MD (ft...	MD (ftKB)	
Surface	9/3/1991	8 5/8	23.00	WC-50	11.0	610.0	
Production, 7,240.0ftKB							
Casing Description	Run Date	OD (in)	Wt/Len (l...	Grade	Top, MD (ft...	MD (ftKB)	
Production	9/8/1991	4 1/2	11.60	M-75	11.0	7,240.0	
Cement							
Des			Start Date		Top (ftKB)		Btm (ftKB)
Surface Casing Cement			9/3/1991		11.0		610.0
Production Casing Cement			9/8/1991		6,200.0		7,240.0
Remedial Casing Cement			8/12/1994		4,214.0		4,724.0
Cement Squeeze			6/20/2005		4,476.0		4,524.0
Proposed Cement							
Des					Top (ftKB)		Btm (ftKB)
Balance Plug					2,402.0		2,500.0
Balance Plug					2,270.0		2,400.0
Cement Squeeze					2,000.0		2,500.0
Balance Plug					834.0		884.0
Balance Plug					610.0		834.0
Balance Plug					11.0		610.0
Balance Plug					3,950.0		4,650.0
Tubing Strings							
Tubing Description	Run Date	String...	ID (in)	Wt (lb/ft)	Grade	Len (ft)	Set De...
Tubing - Production	10/3/2005	2 3/8	2.00	4.70	J-55	7,075.00	
Tubing Components							
Item Des	OD (in)	Wt (lb/ft)	Grade	Jts	Len (ft)	Btm (ftKB)	Btm (TVD) (ftKB)
EUE 8rd Tubing	2 3/8	4.70	J-55	225	7,073.50	7,084.5	
Pump Seating	2 3/8	1.10			1.00	7,085.5	
Nipple							
Notched collar	2 3/8				0.50	7,086.0	
Other In Hole							
Run Date	Des			OD (in)	Top (ftKB)	Btm (ftKB)	

Well Name: UPRC 13-14J

VERTICAL - ORIGINAL HOLE, 6/26/2018 5:26:35 PM



Proposed Other In Hole			
Des	OD (in)	Top (ftKB)	Btm (ftKB)
Cement Retainer	4	2,400.0	2,402.0
Cast Iron Bridge Plug w/ 20 SX Cement	4	6,564.0	6,816.0

Logs			
Date	Type	Top, MD (ftKB)	Btm, MD (ftKB)
9/8/1991	COMPENSATED DENSITY	3,750.0	7,200.0
9/8/1991	INDUCTION	608.0	7,234.0
9/11/1991	CEMENT BOND	6,000.0	7,192.0
8/16/1994	CEMENT BOND	4,100.0	4,800.0
5/5/2011	GYRO	10.0	6,500.0

Perforation Data				
Linked Zone	Sum of Entered Shot Total	Top (ftKB)	Btm (ftKB)	Date
SUSSEX, ORIGINAL HOLE	96	4,476.00	4,524.00	8/16/1994
	0	4,724.00	4,724.00	8/12/1994
NIOBRARA, ORIGINAL HOLE	120	6,854.00	6,884.00	7/11/2005
NIOBRARA, ORIGINAL HOLE	96	6,890.00	6,906.00	7/11/2005
CODELL, ORIGINAL HOLE	52	7,110.00	7,123.00	9/11/1991
CODELL, ORIGINAL HOLE	39	7,110.00	7,123.00	6/24/2005
Total (Sum)	403			

Proposed Perforations				
Linked Zone	Sum of En...	Top Depth (ftKB)	Btm (ftKB)	Date
	0	2,500.00	2,500.00	4/17/2018
Total (Sum)	0			

Job Supply Amounts					
Supply Item Des	Type	Uni...	Job Category	Total...	Total...