



RADIAL BOND LOG GAMMA RAY CCL

Company ANADARKO
Well HIGHWAY 160 7-2
Field WATTENBERG
County WELD **State** CO

Location: AP# : 05-123-31691
 SHL: 1496' FNL & 1659' FEL SW/NE
 LAT: 40.08330 LONG: -104.74080
 SEC 2 TWP 1N RGE 66W
Permanent Datum GL **Elevation** 5105'
Log Measured From KB 17' **Elevation** 5122'
Drilling Measured From KB **Elevation** 5121'
Other Services G.L. 5105'

Date 4/12/18
Run Number 1
Depth Driller 8485'
Depth Logger 2240'
Bottom Logged Interval 2240'
Top Log Interval SURFACE
Open Hole Size N/A
Type Fluid WATER
Density / Viscosity 1
Max. Recorded Temp. N/A
Estimated Cement Top 1986'
Time Well Ready N/A
Time Logger on Bottom N/A
Equipment Number W-200
location WINDSOR, CO
Recorded By S LOPEZ
Witnessed By J SCHMID

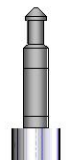
Borehole Record				Tubing Record			
Run Number	Bit	From	To	Size	Weight	From	To
Casing Record							
Surface String		8.63		24			
Prot. String							
Production String		4.5		11.60			
Liner							

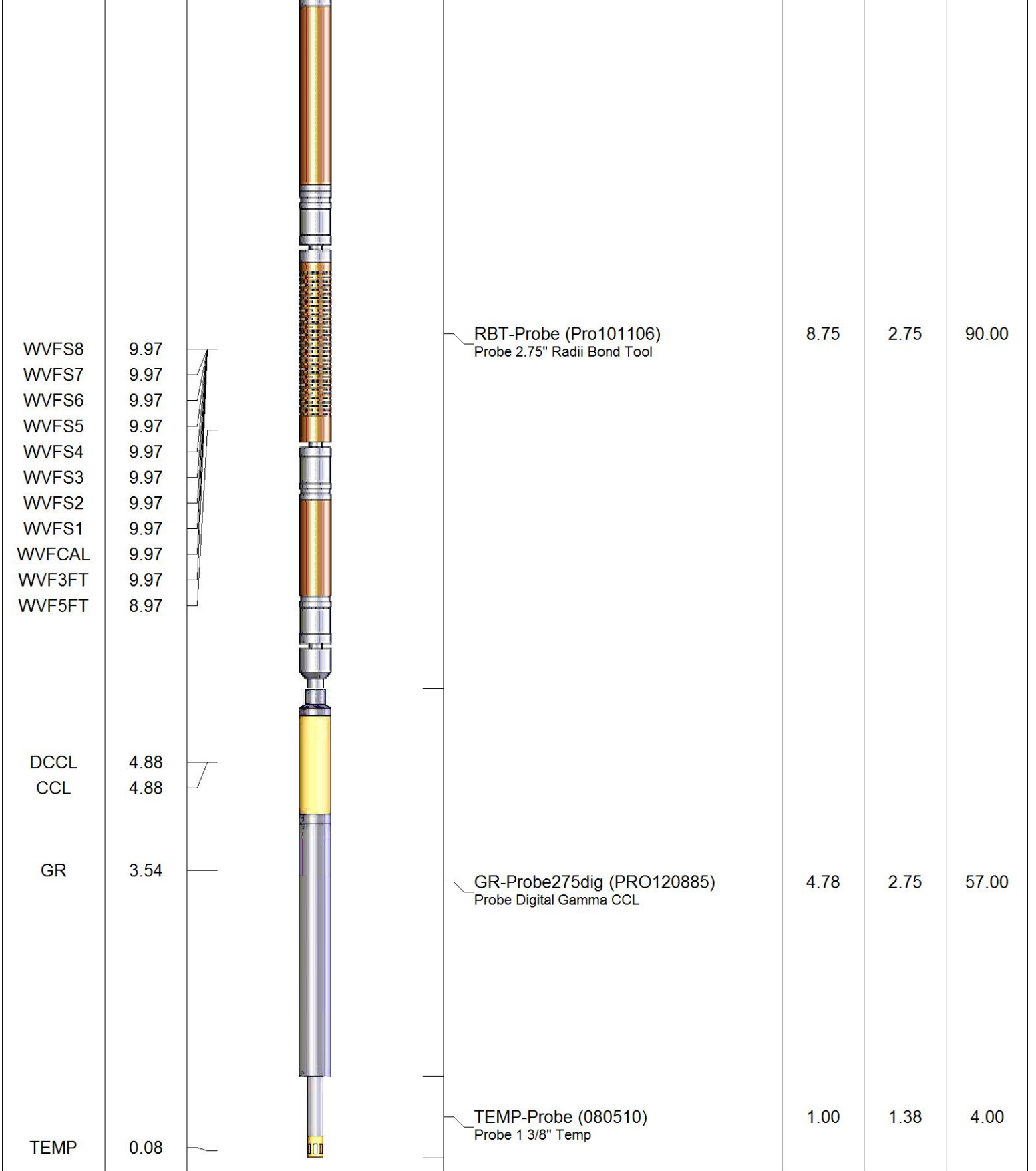
<<< Fold Here >>>

All interpretations are opinions based on inferences from electrical or other measurements and we cannot and do not guarantee the accuracy or correctness of any interpretation, and we shall not, except in the case of gross or willful negligence on our part, be liable or responsible for any loss, costs, damages, or expenses incurred or sustained by anyone resulting from any interpretation made by any of our officers, agents or employees. These interpretations are also subject to our general terms and conditions set out in our current Price Schedule.

Comments

WELL LOADED BEFORE ARRIVAL
THANK YOU FOR USING CUTTERS WIRELINE!

Sensor	Offset (ft)	Schematic	Description	Length (ft)	O.D. (in)	Weight (lb)
			CHD-1.4375CHD Titan Cable Head 1 7/16	1.00	1.44	10.00



Dataset: highway 160 7-2.db: field/well/run1/pass10
 Total length: 15.53 ft
 Total weight: 161.00 lb
 O.D.: 2.75 in

Database File highway 160 7-2.db
 Dataset Pathname pass10
 Presentation Format rbl55
 Dataset Creation Thu Apr 12 09:23:28 2018
 Charted by Depth in Feet scaled 1:240

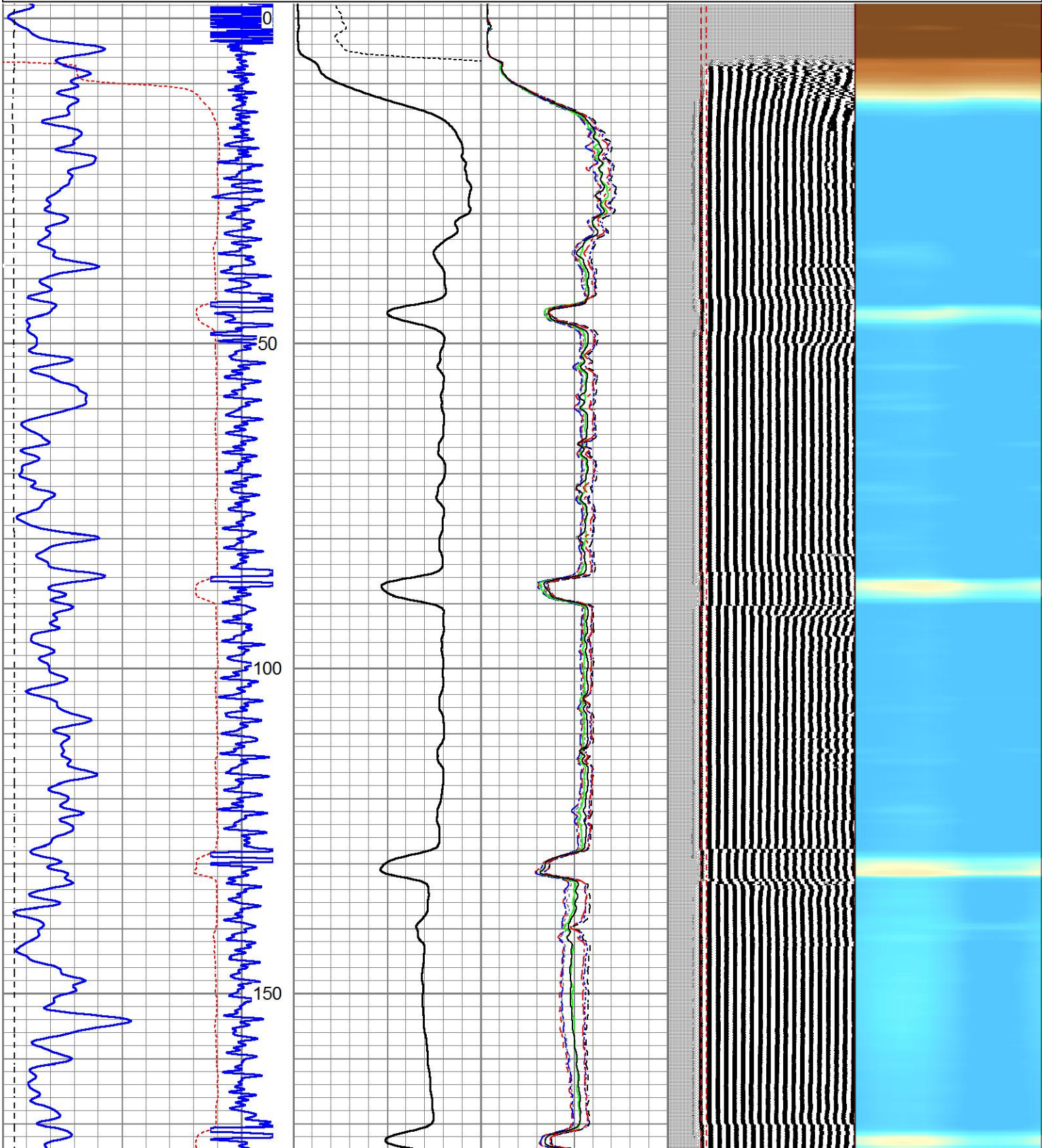
343	TT (usec)	243
0	GR (GAPI)	250
0	LTEN (lb)	4000
	CCL	

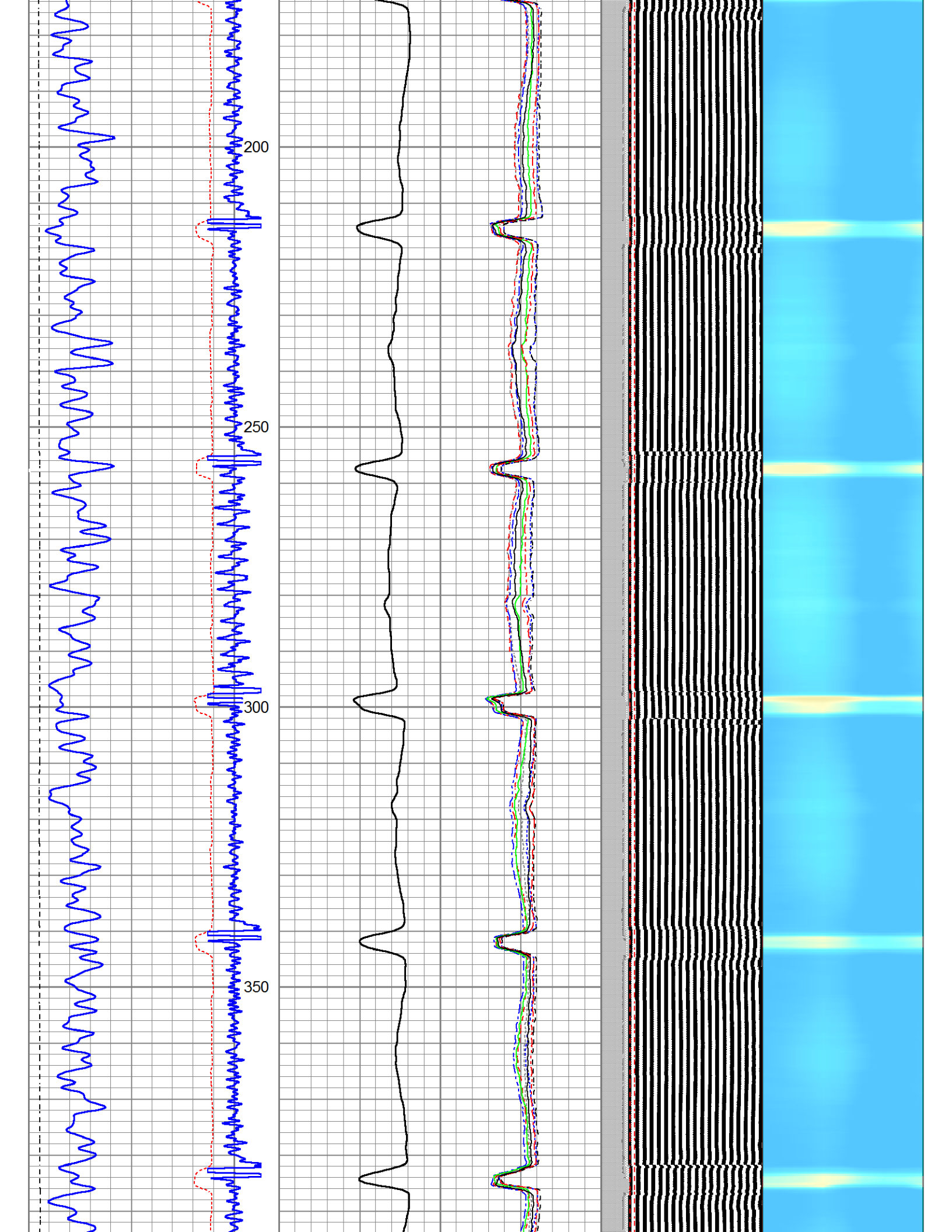
0	Amplitude (mV)	100	-5	AMPS2	150
	Amplified Amplitude		-5	AMPS3	150
0	(mV)	10	-5	AMPS4	150
			-5	AMPS5	150
			-5	AMPS6	150
			-5	AMPS7	150
			-5	AMPS8	150
			-5	AMPS1	150

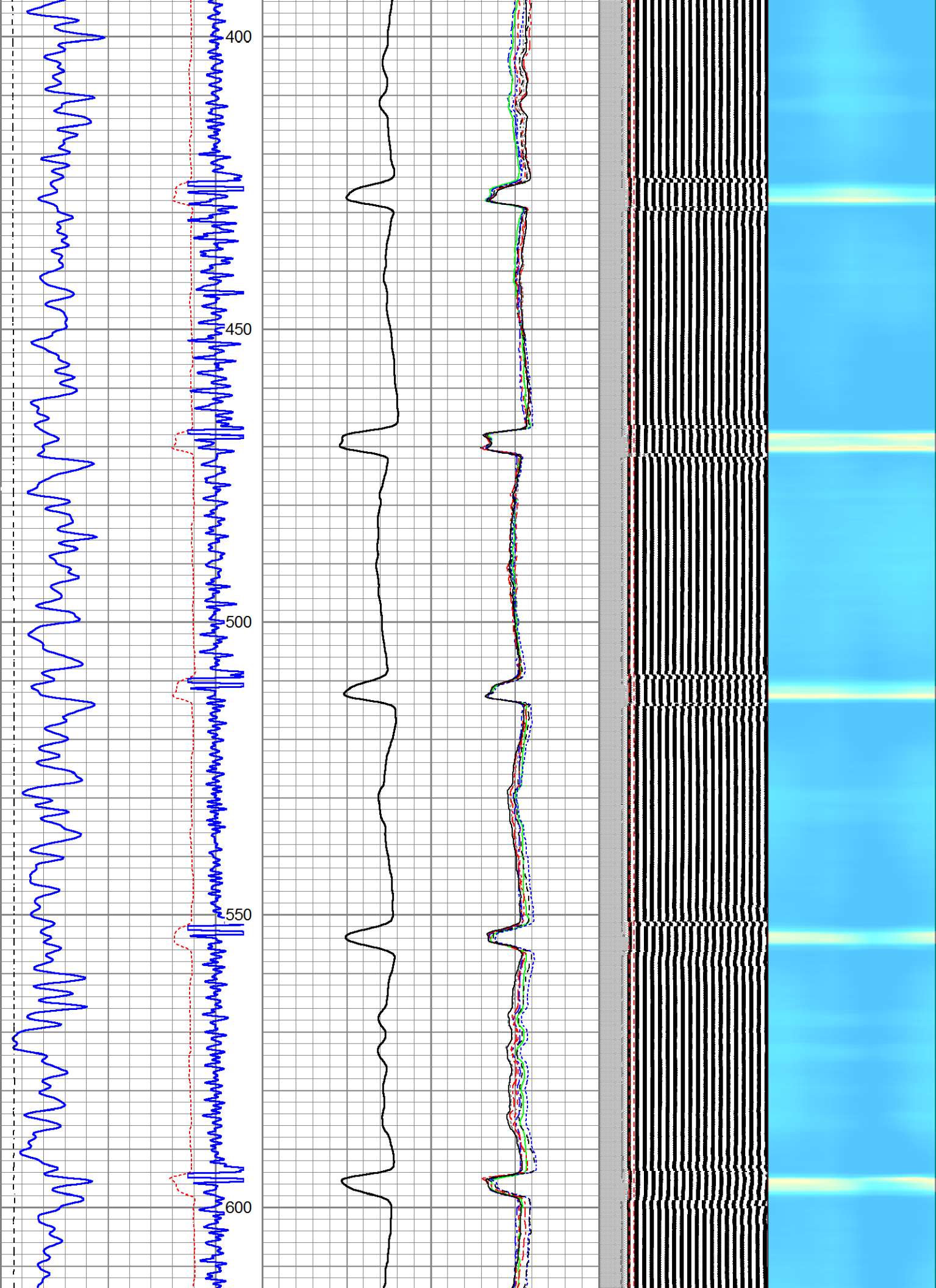
200 VDL (usec) 1200

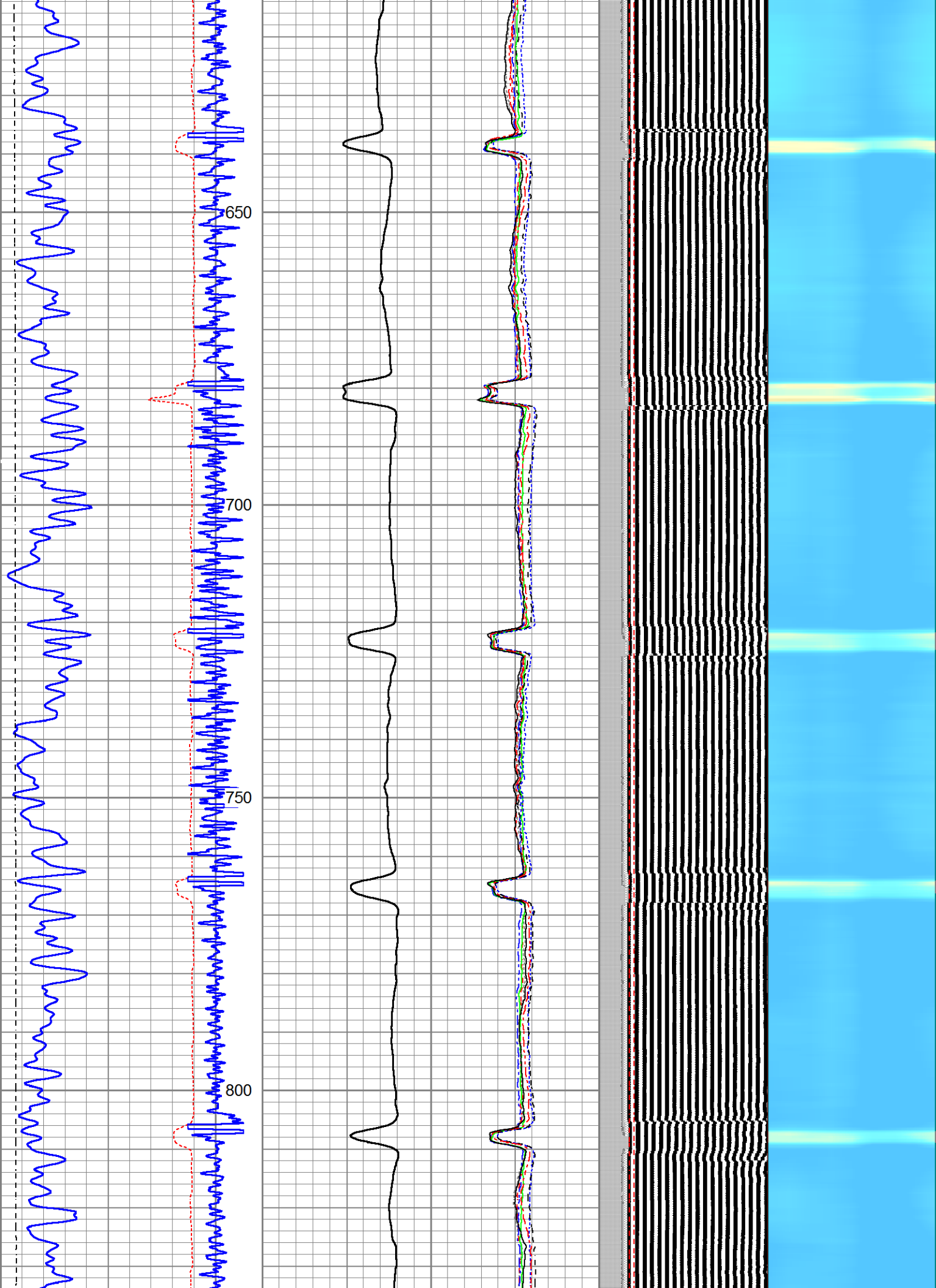
Cement Map

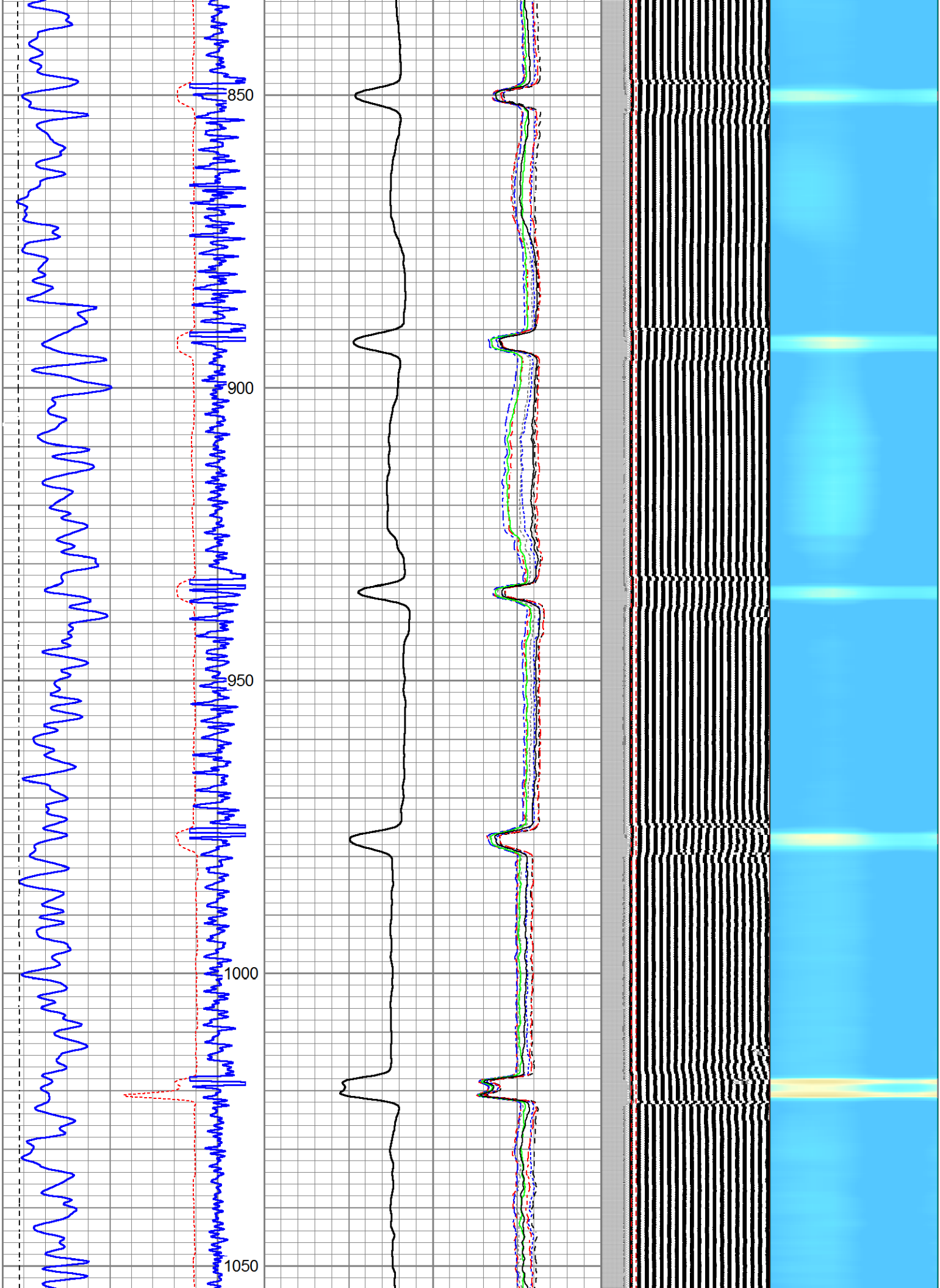
Free Pipe Gate

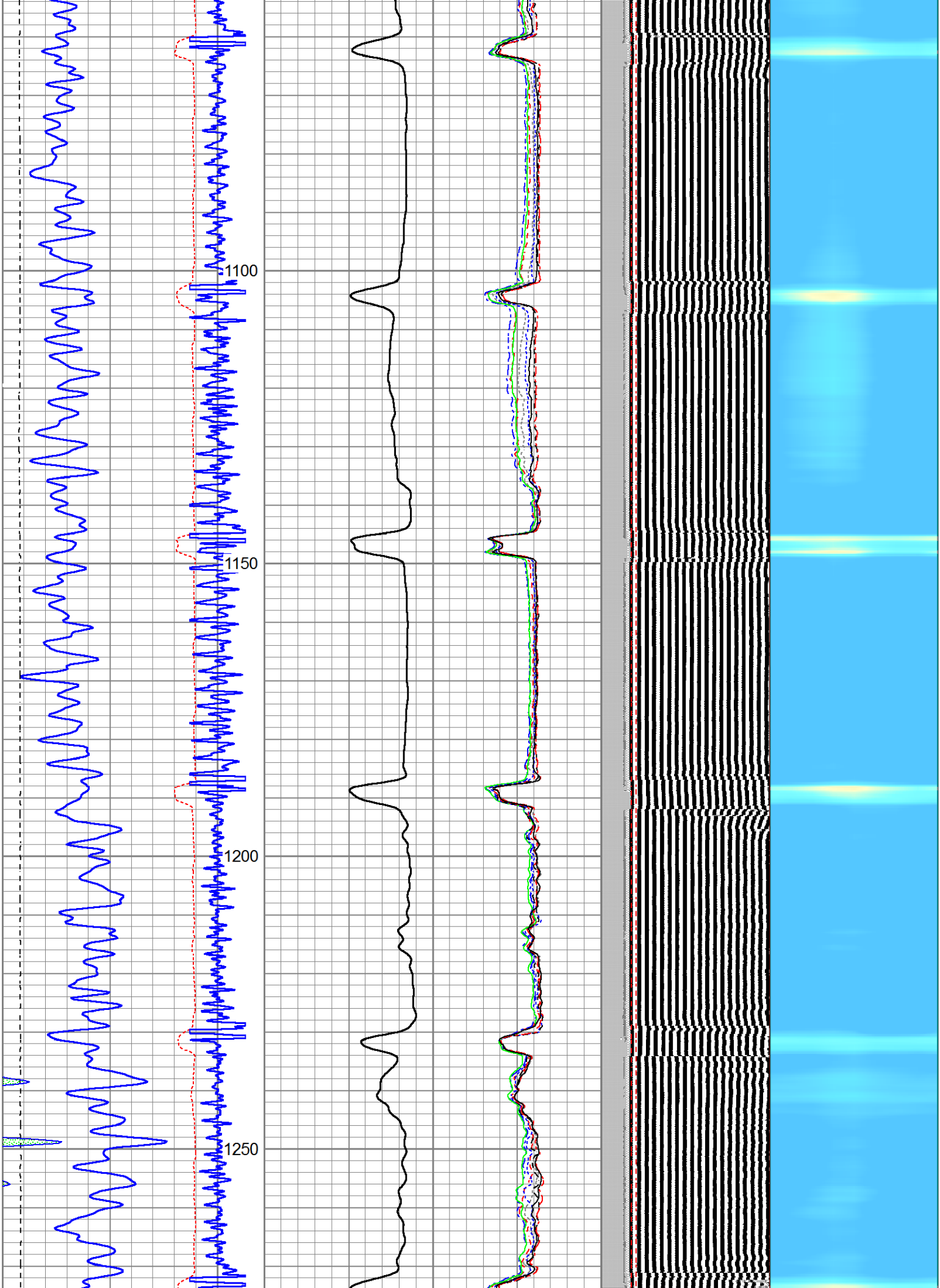


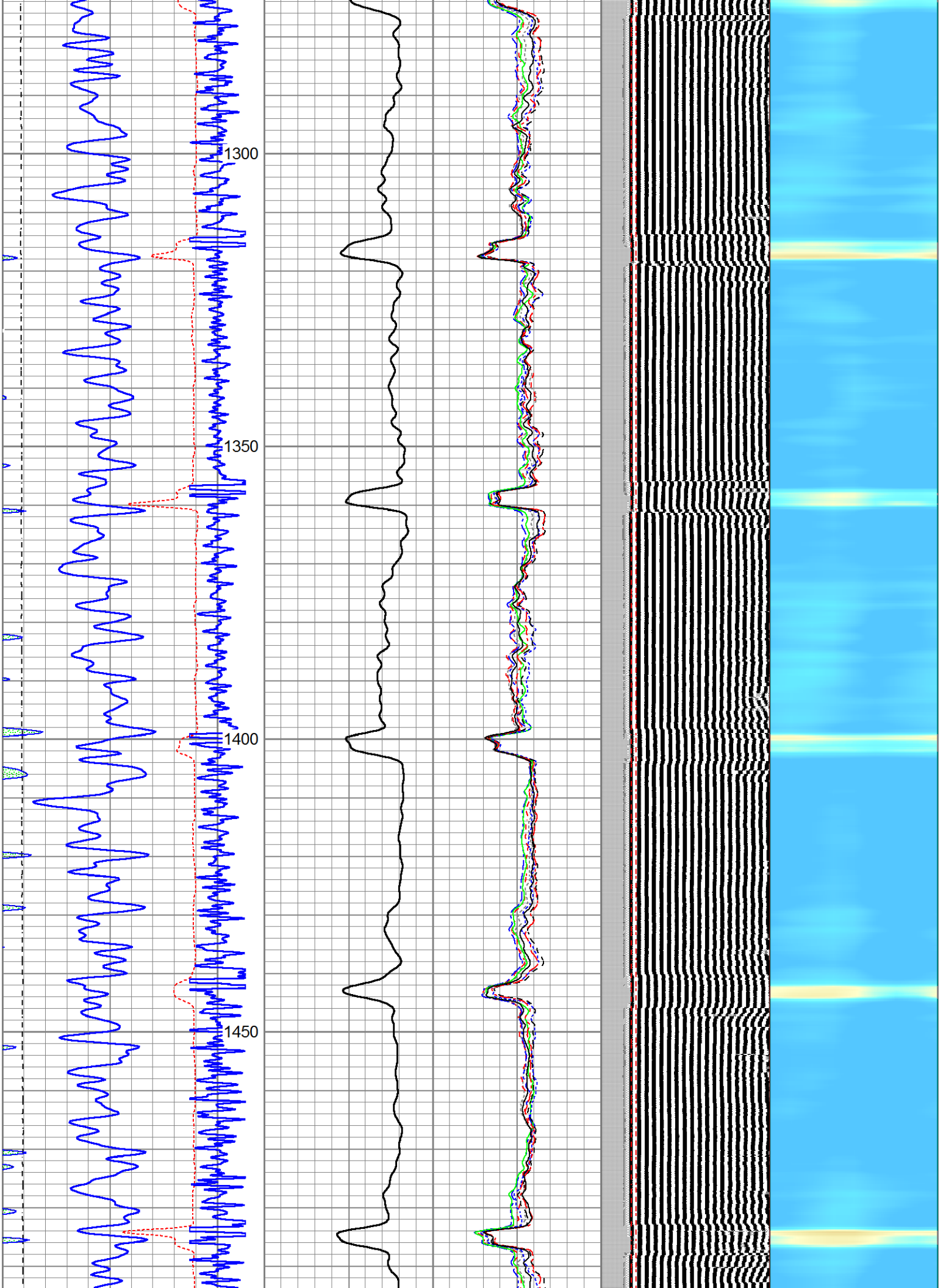


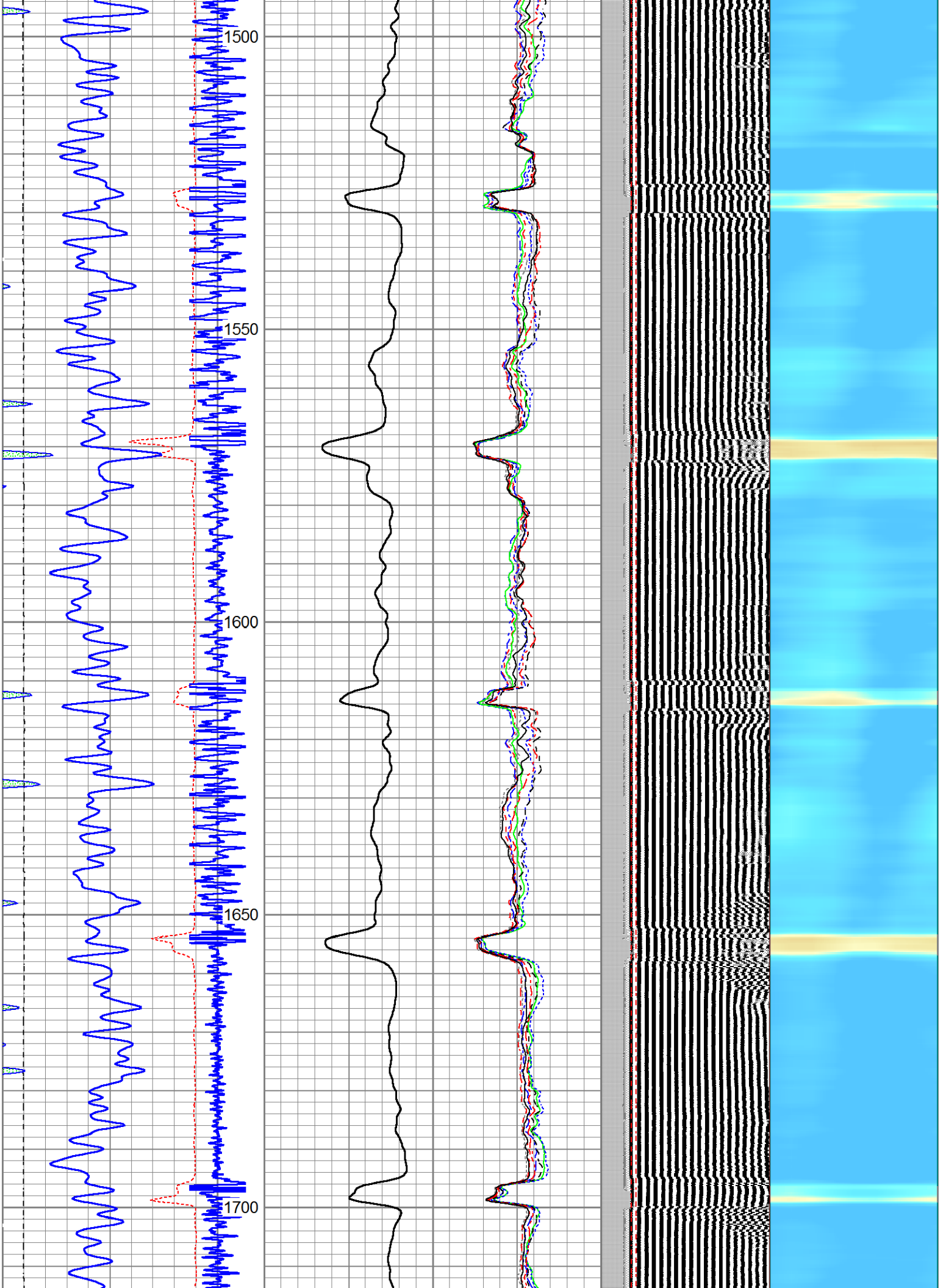


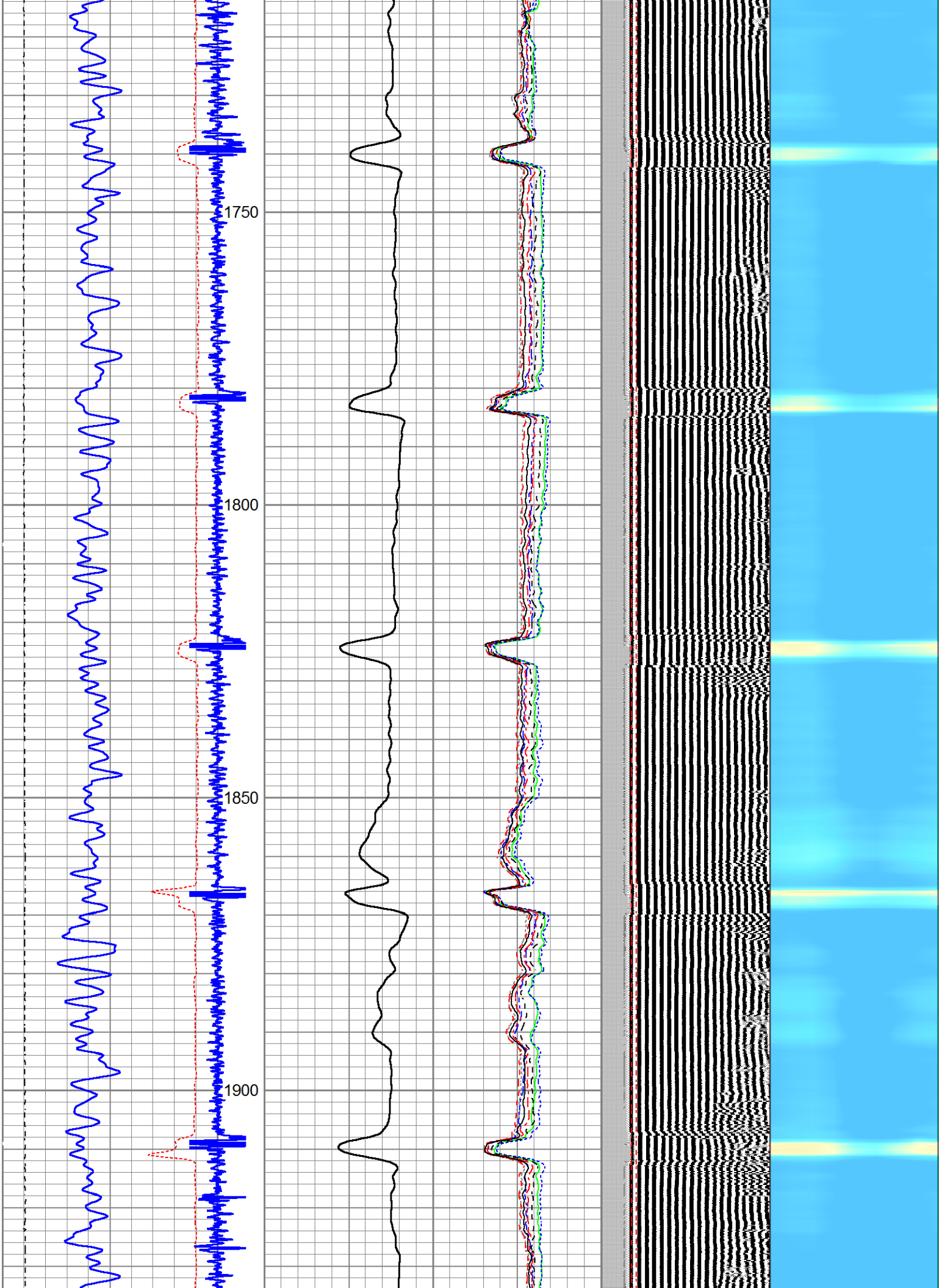


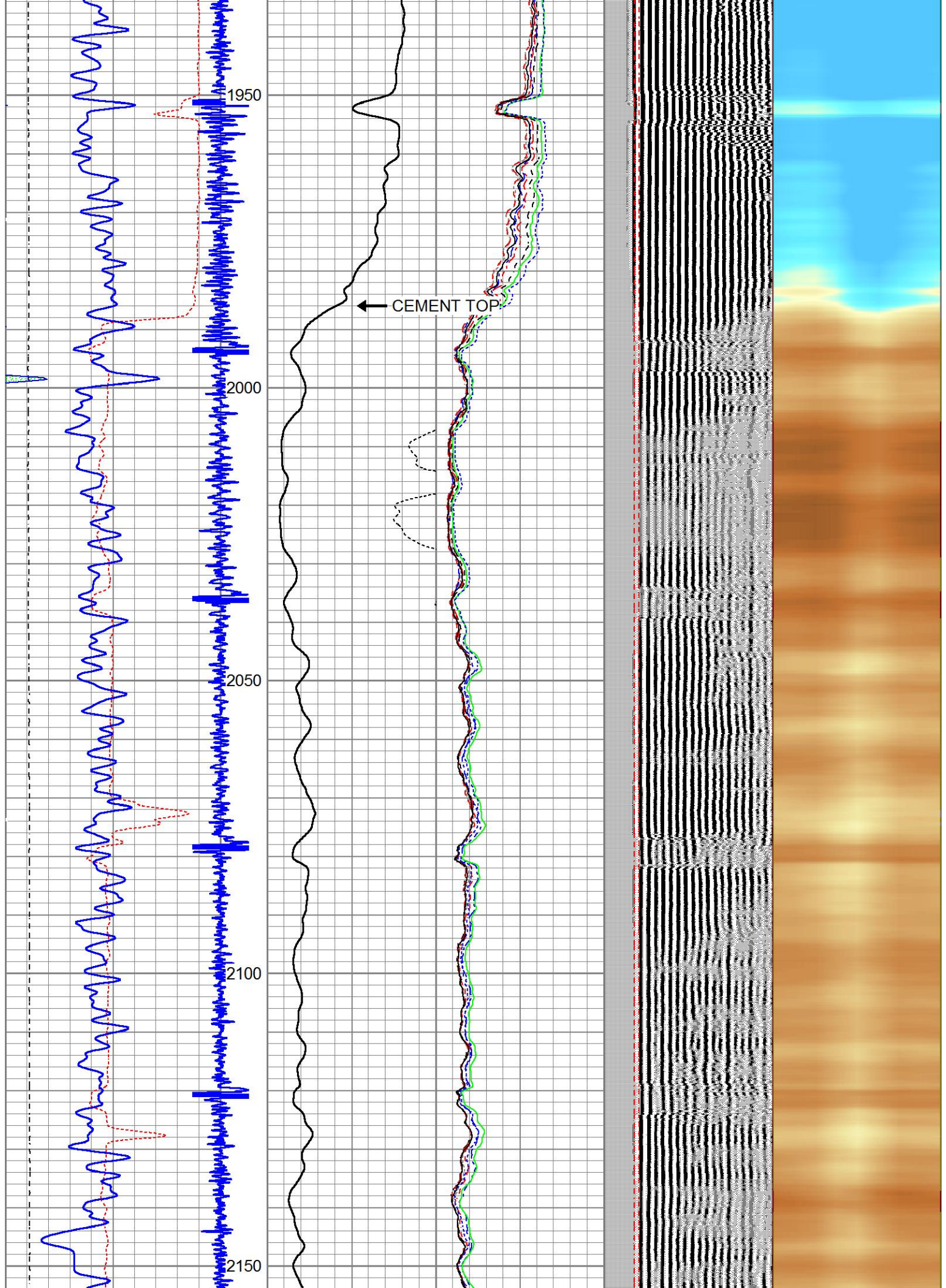


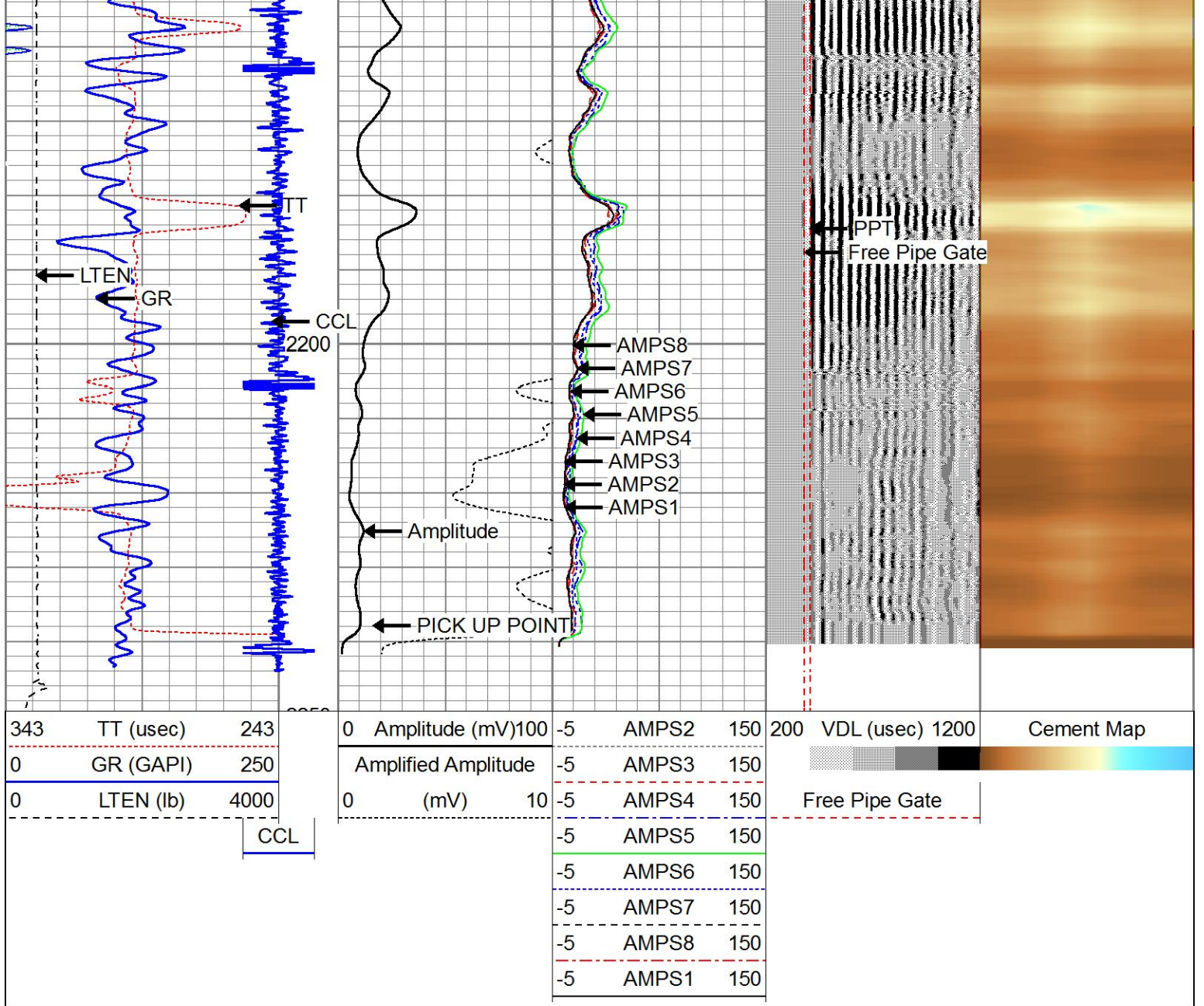












Company ANADARKO
Well HIGHWAY 160 7-2
Field WATTENBERG
County WELD
State CO