



**RADIAL BOND
GAMMA RAY
CCL**

Company ANADARKO
Well HIGHWAY 160 7-2
Field WATTENBERG
County WELD State COLORADO

Location: API #: 05-123-31691
SW/NE 1496FNL 1659FEL
LAT:40.08330 LONG:-104.74080
SEC 2 TWP 1N RGE 66W
Permanent Datum GL Elevation 5105'
Log Measured From KB 17'
Drilling Measured From KB
Other Services
Elevation
K.B. 5122'
D.F. 5122'
G.L. 5105'

Date 4-09-2018
Run Number ONE
Depth Driller 8485'
Depth Logger 4000'
Bottom Logged Interval 4000'
Top Log Interval SURFACE
Open Hole Size 4.5"
Type Fluid WATER
Density / Viscosity 8.6
Max. Recorded Temp. 139.9
Estimated Cement Top 2880'
Time Well Ready NA
Time Logger on Bottom NA
Equipment Number 058
Location WINDSOR COLORADO
Recorded By R. ALLES
Witnessed By JOE SCHMID


Borehole Record				Tubing Record			
Run Number	Bit	From	To	Size	Weight	From	To
Casing Record	Size			Wgt/Ft	Top		Bottom
Surface String	8.63"			24#	SURFACE		1195'
Prot. String							
Production String	4.5"			11.6#	SURFACE		7580'
Liner							

<<< Fold Here >>>

All interpretations are opinions based on inferences from electrical or other measurements and we cannot and do not guarantee the accuracy or correctness of any interpretation, and we shall not, except in the case of gross or willful negligence on our part, be liable or responsible for any loss, costs, damages, or expenses incurred or sustained by anyone resulting from any interpretation made by any of our officers, agents or employees. These interpretations are also subject to our general terms and conditions set out in our current Price Schedule.

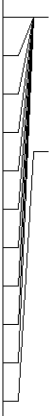
Comments

**RAN CEMENT BOND LOG TO VERIFY CEMENT
THANK YOU FOR USING CUTTERS WIRELINE**

Sensor	Offset (ft)	Schematic	Description	Len (ft)	OD (in)	Wt (lb)
						

WVF3FT 9.44
 WVFCAL 9.44
 WVFS1 9.44
 WVFS2 9.44
 WVFS3 9.44
 WVFS4 9.44
 WVFS5 9.44
 WVFS6 9.44
 WVFS7 9.44
 WVFS8 9.44
 WVF5FT 8.44

9.44
 9.44
 9.44
 9.44
 9.44
 9.44
 9.44
 9.44
 9.44
 9.44
 8.44



RBT-Probe (060112_55)
 Probe 2.75" Radii Bond Tool

8.75 2.75 90.00

CCL 4.75

4.75

GR-Probe (060109)
 Probe 2.75" 4 Channel Pulse

4.00 2.75 30.00

GR 2.25

2.25

TEMP-1.375TEMP (060110)
 Temperature Tool

1.25 1.38 30.00

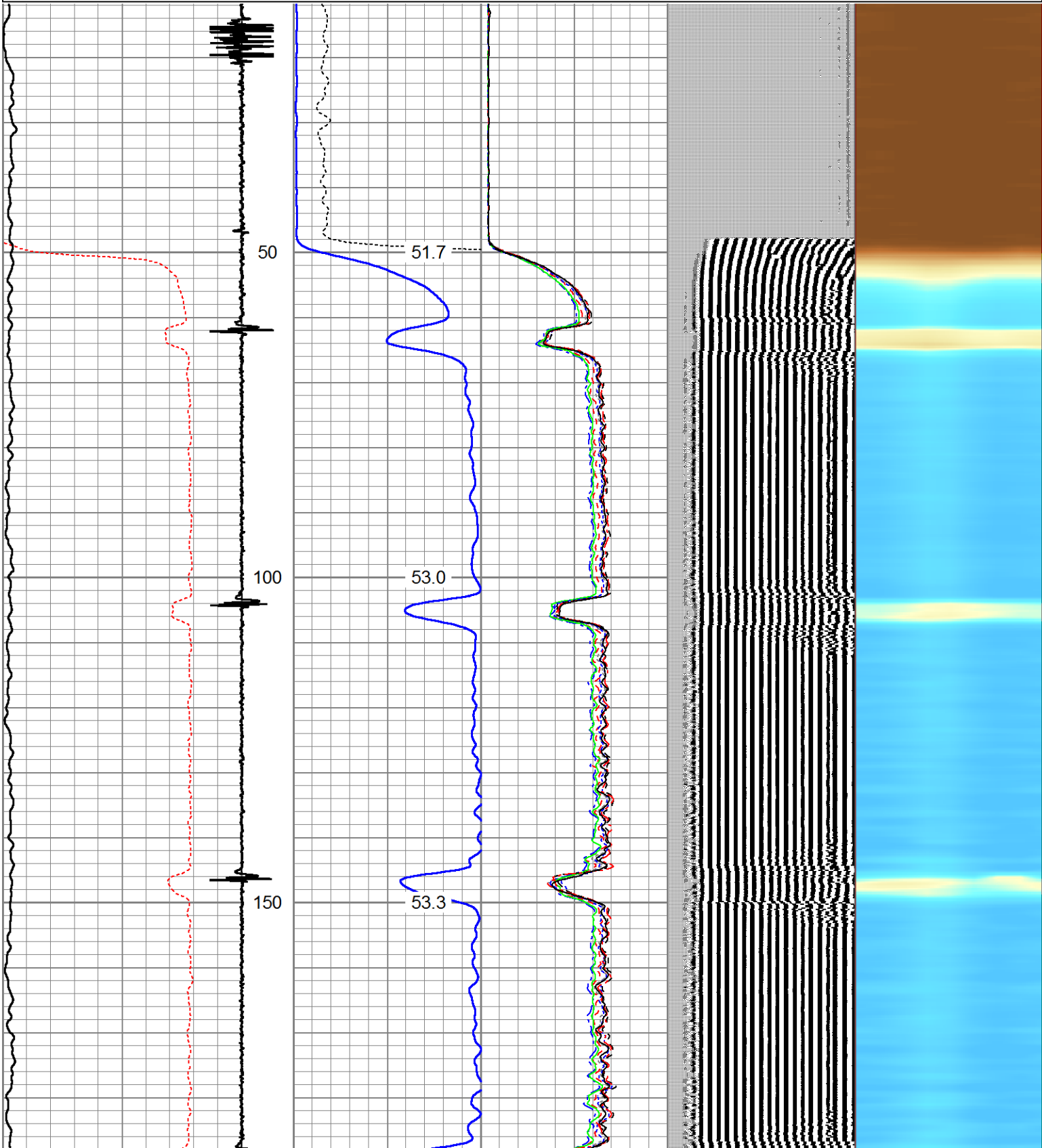
TEMP 0.08

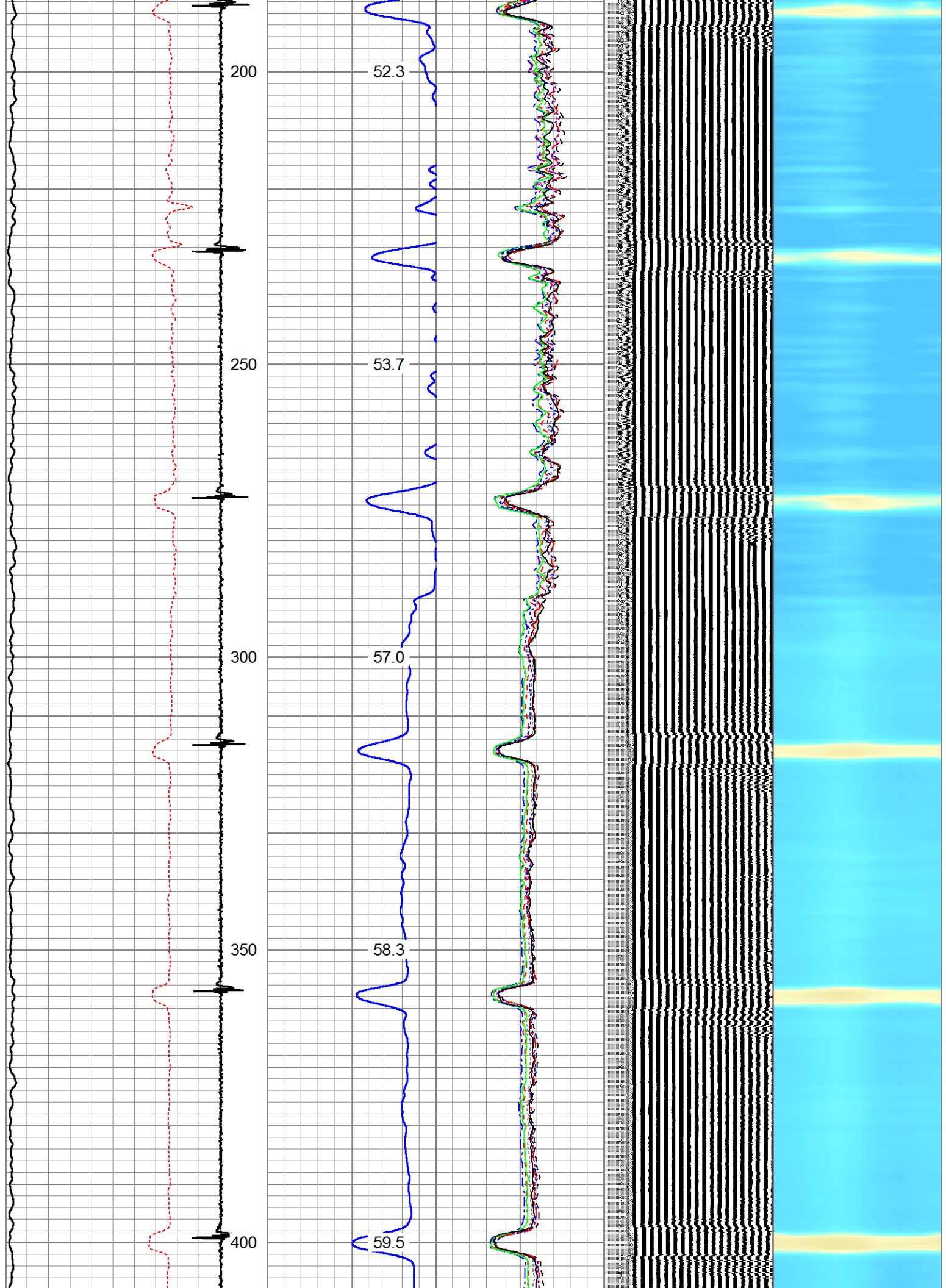
0.08

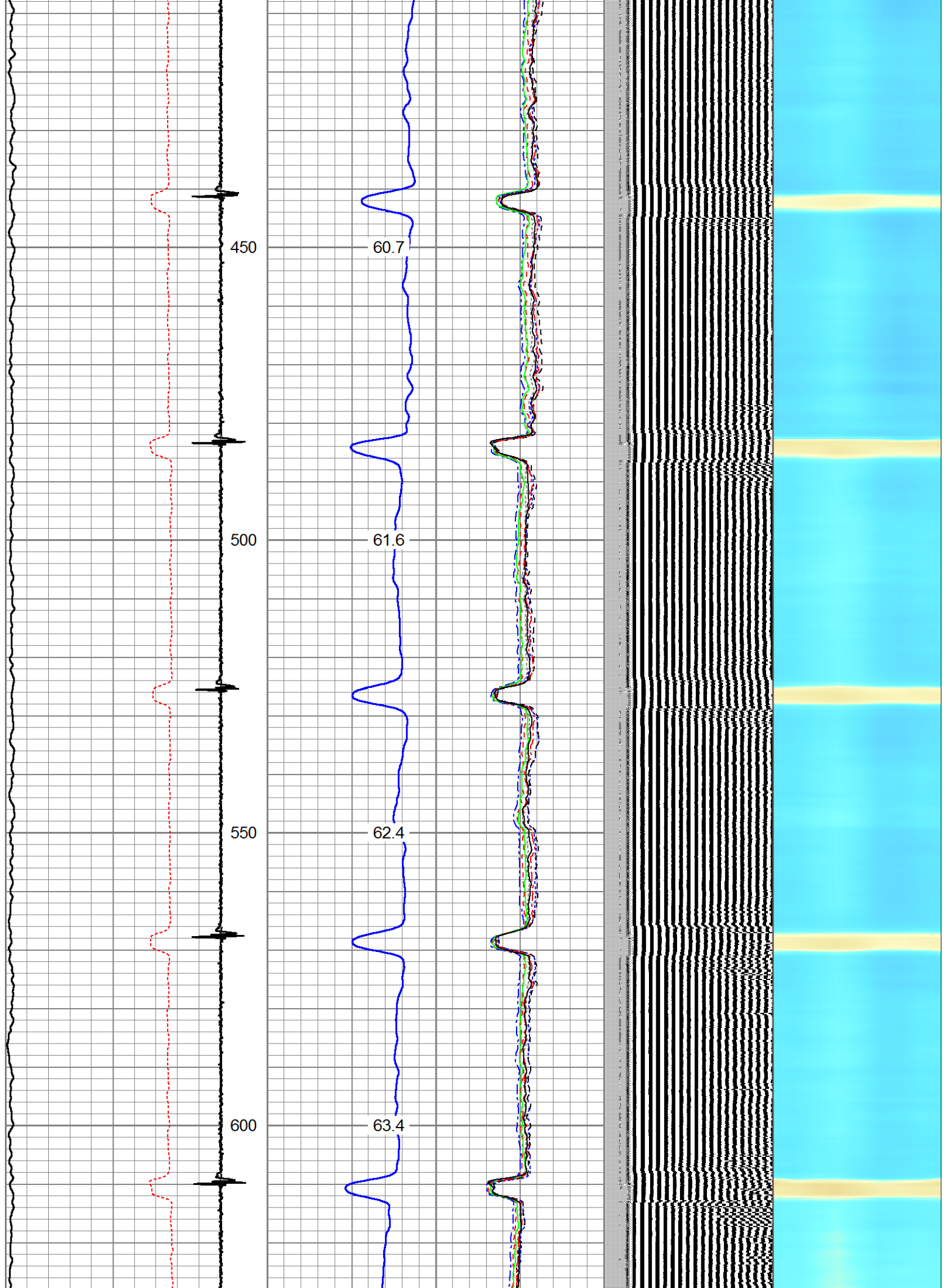
Dataset: highway 160 7-2.db: field/well/run1/pass4
 Total Length: 14.00 ft
 Total Weight: 150.00 lb
 O.D. 2.75 in

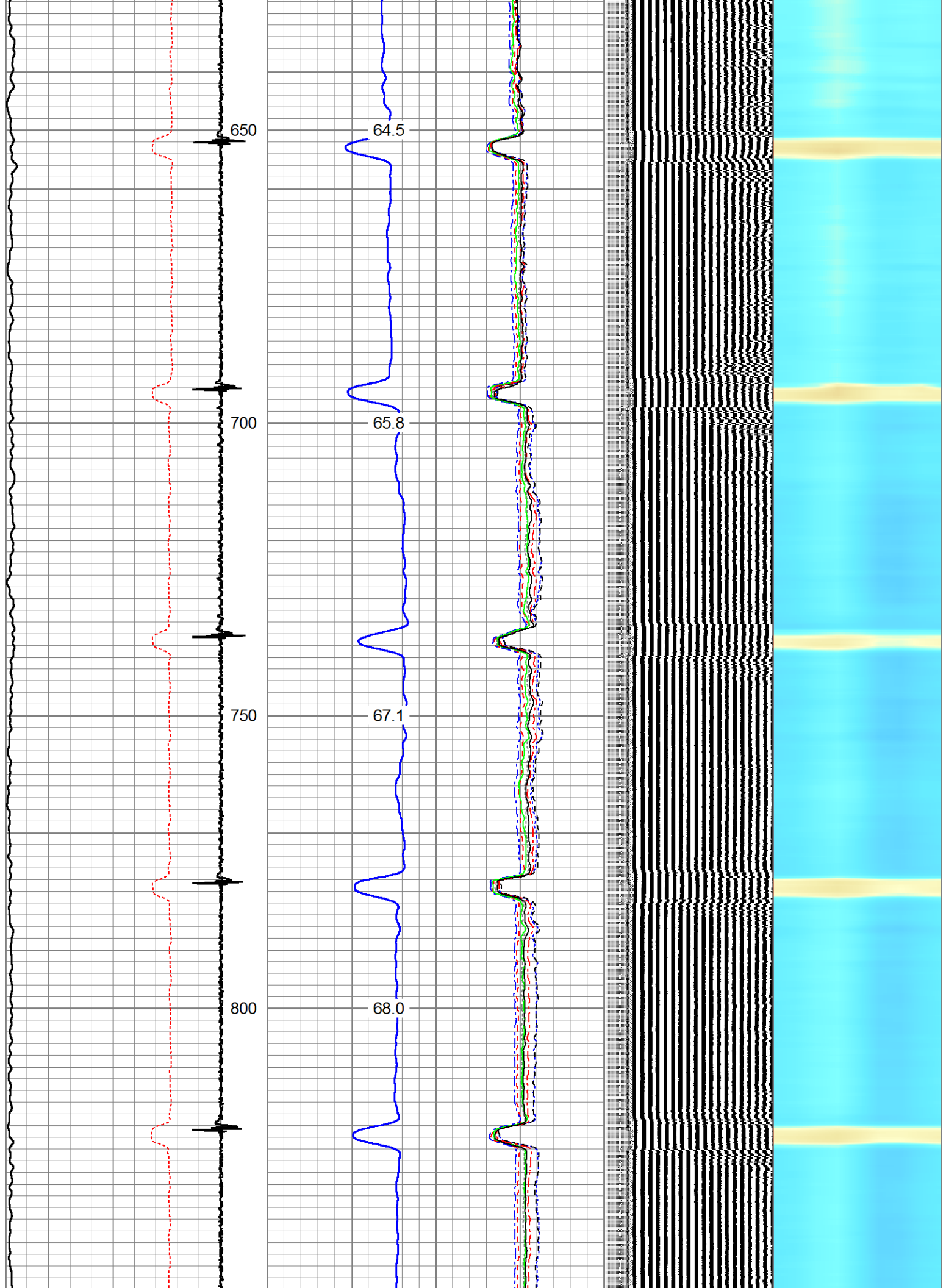
Database File: highway 160 7-2.db
 Dataset Pathname: pass4
 Presentation Format: rbl55
 Dataset Creation: Mon Apr 09 11:58:27 2018 by Log 7.0 B1
 Charted by: Depth in Feet scaled 1:240

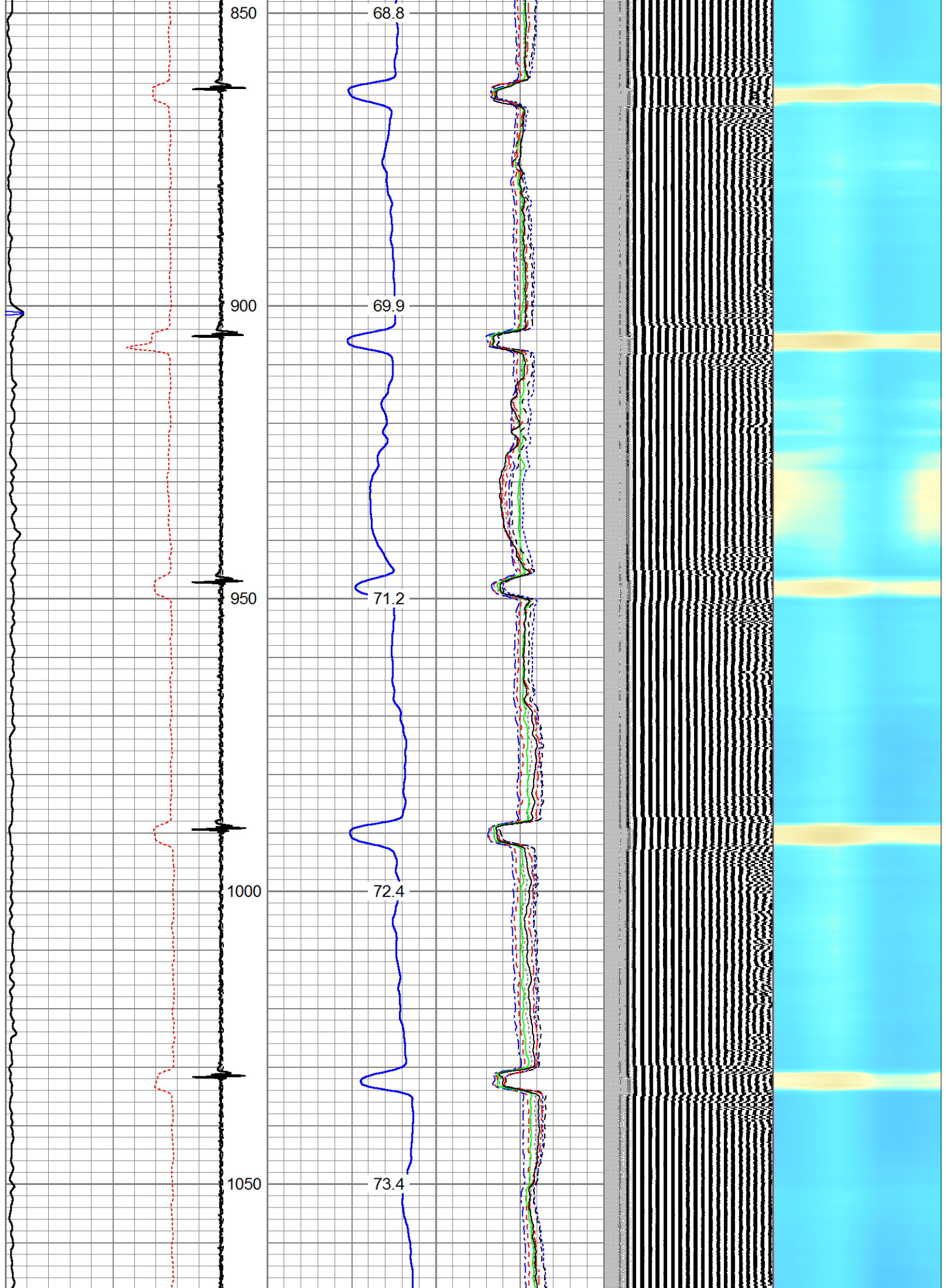
325	TT (usec)	225	LTEN (lb)	0	Amplitude (mV)	100	-5	AMPS2	150	200	VDL	1200	Cement Map
2000	GR (GAPI)	4000		0	Amplified Amplitude	10	-5	AMPS3	150				
			CCL	0	(mV)	10	-5	AMPS4	150				
					TEMP		-5	AMPS5	150				
					(degF)		-5	AMPS6	150				
							-5	AMPS7	150				
							-5	AMPS8	150				
							-5	AMPS1	150				

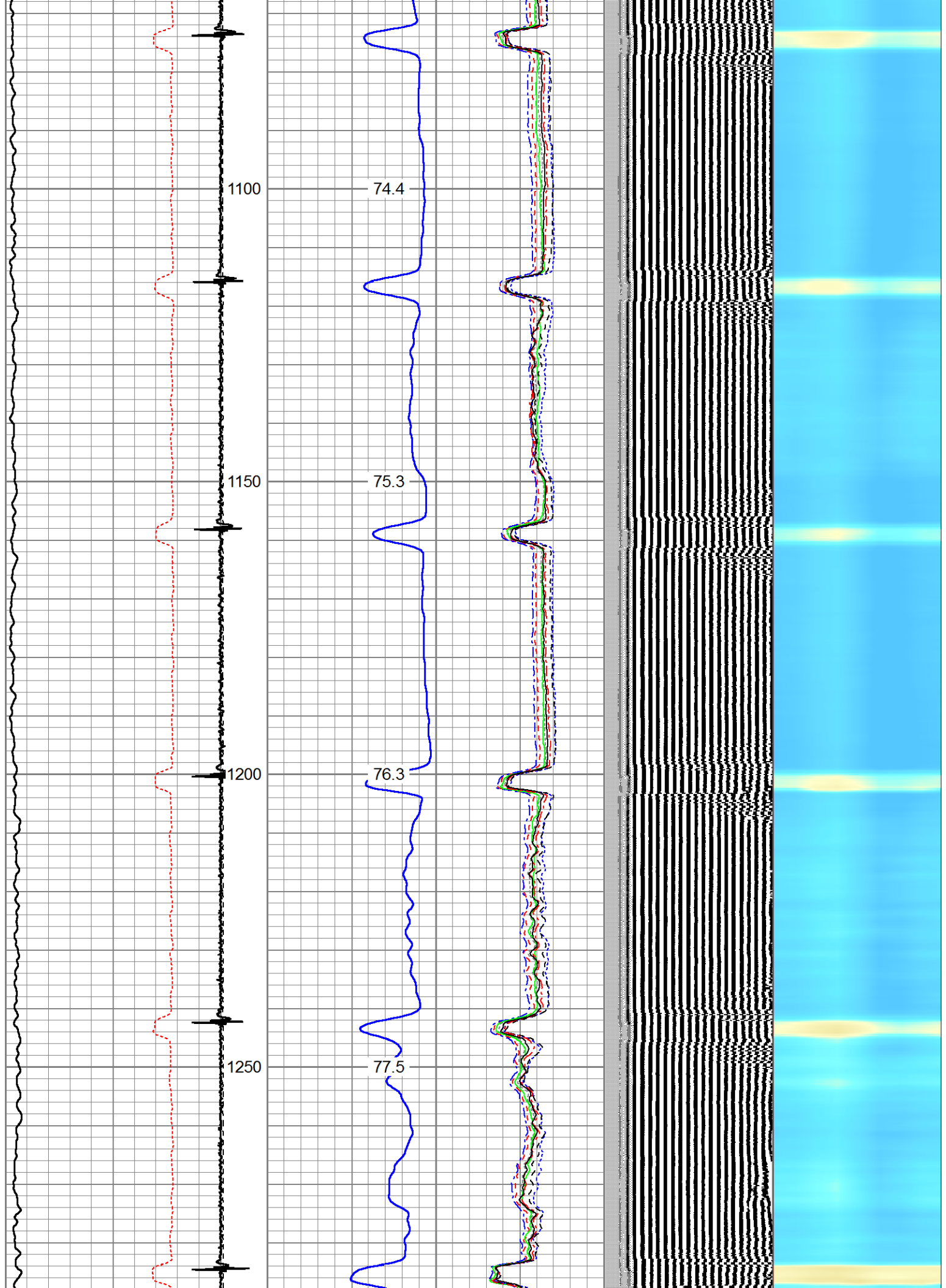


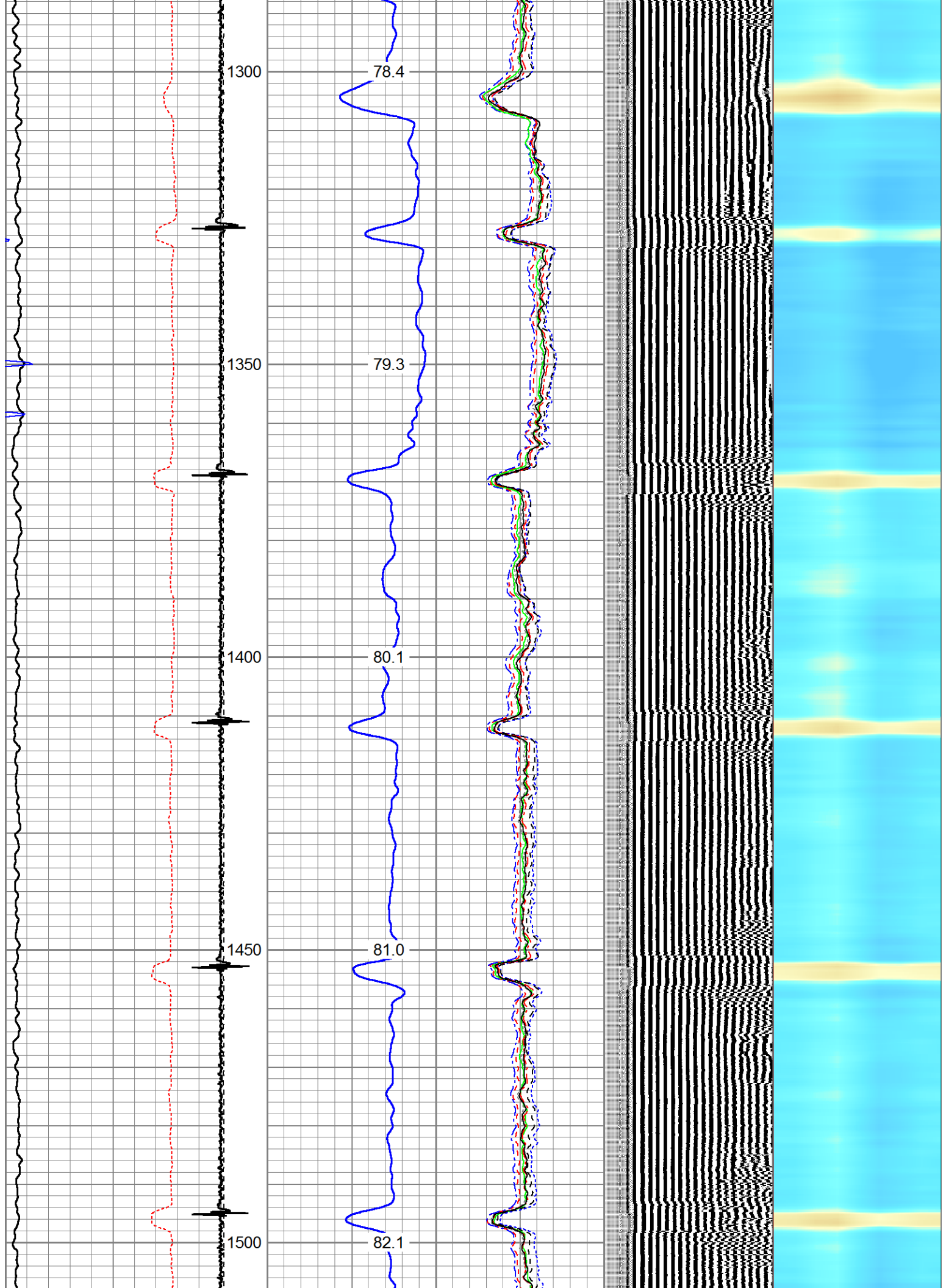


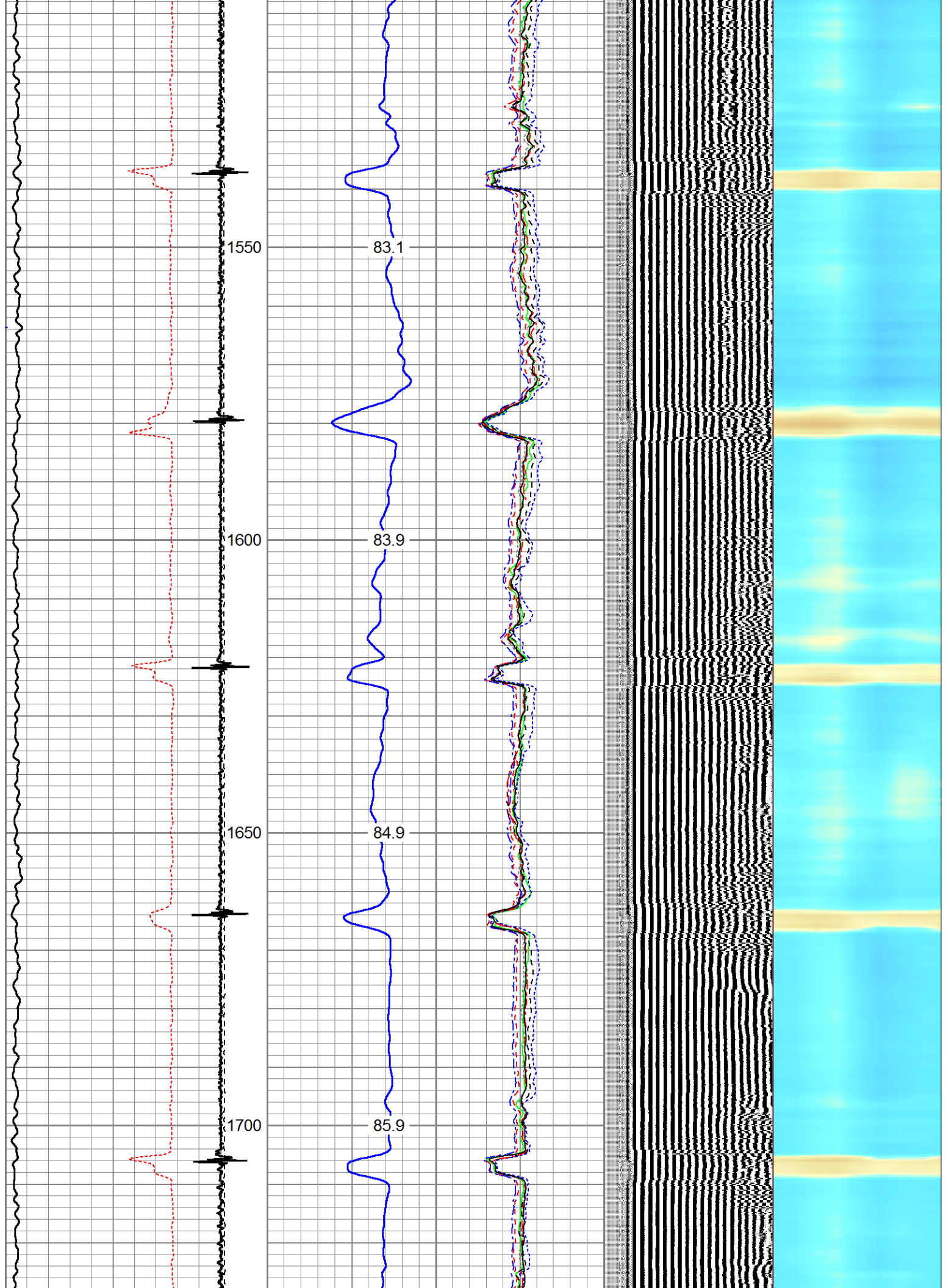


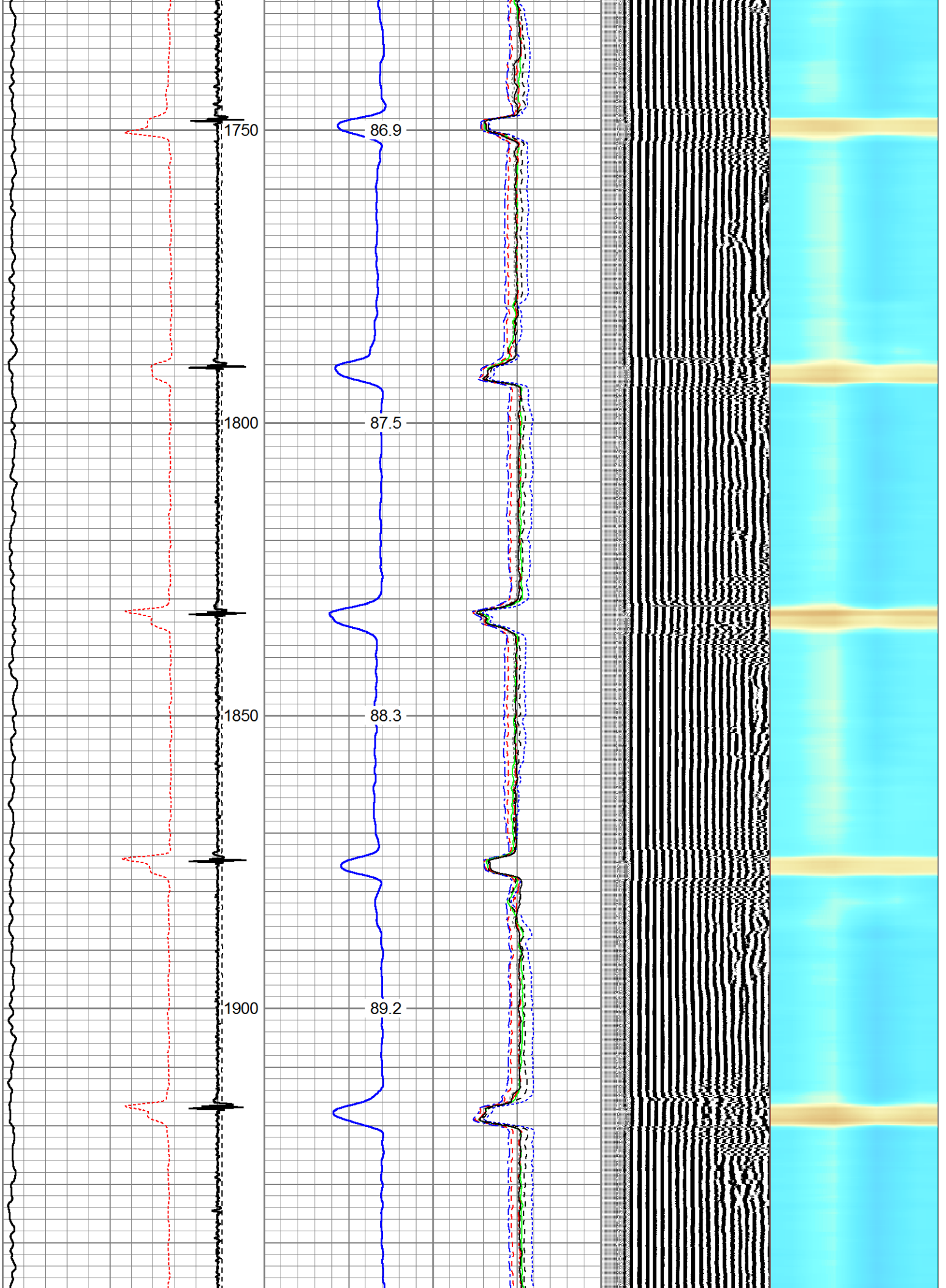


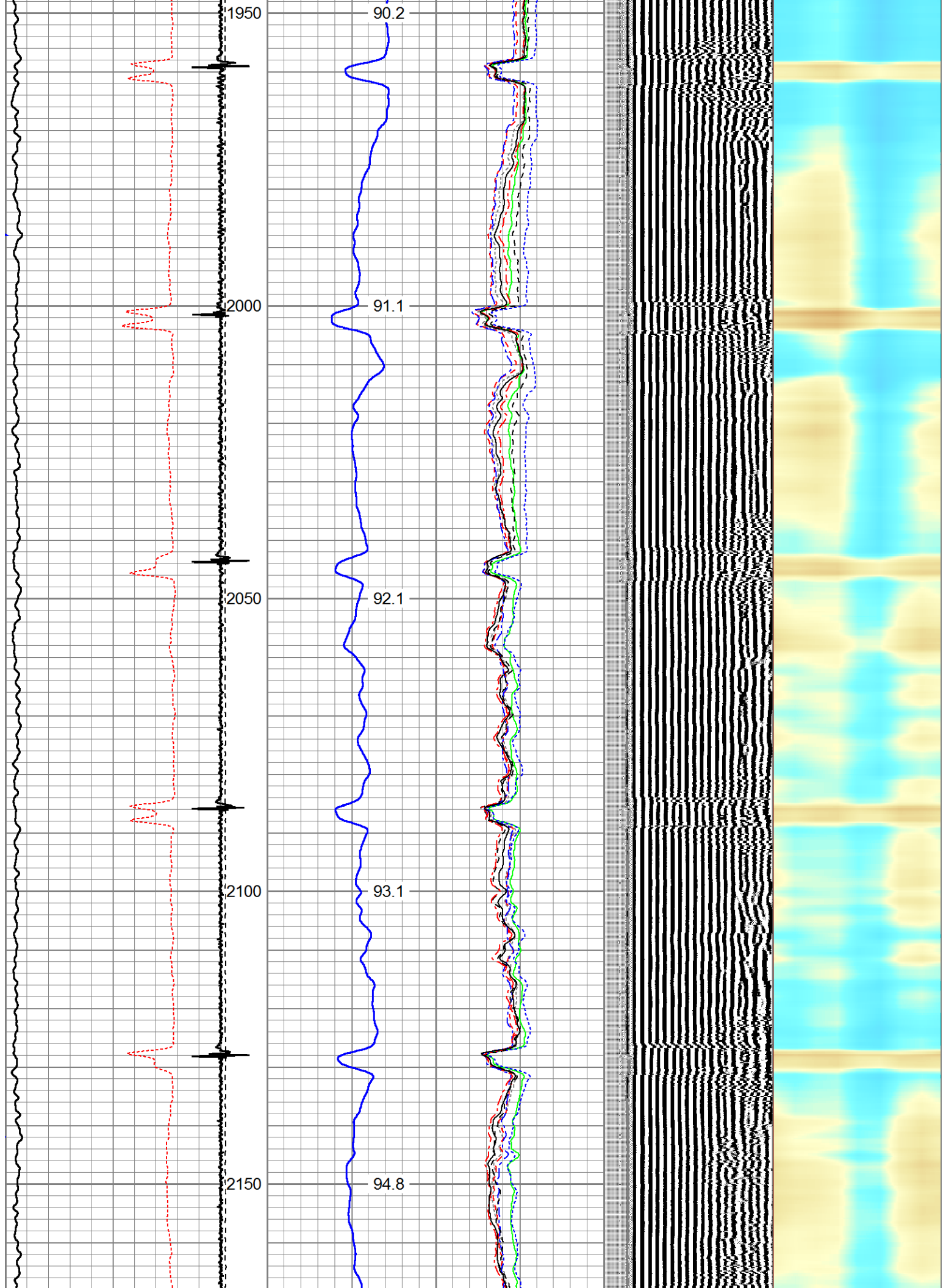


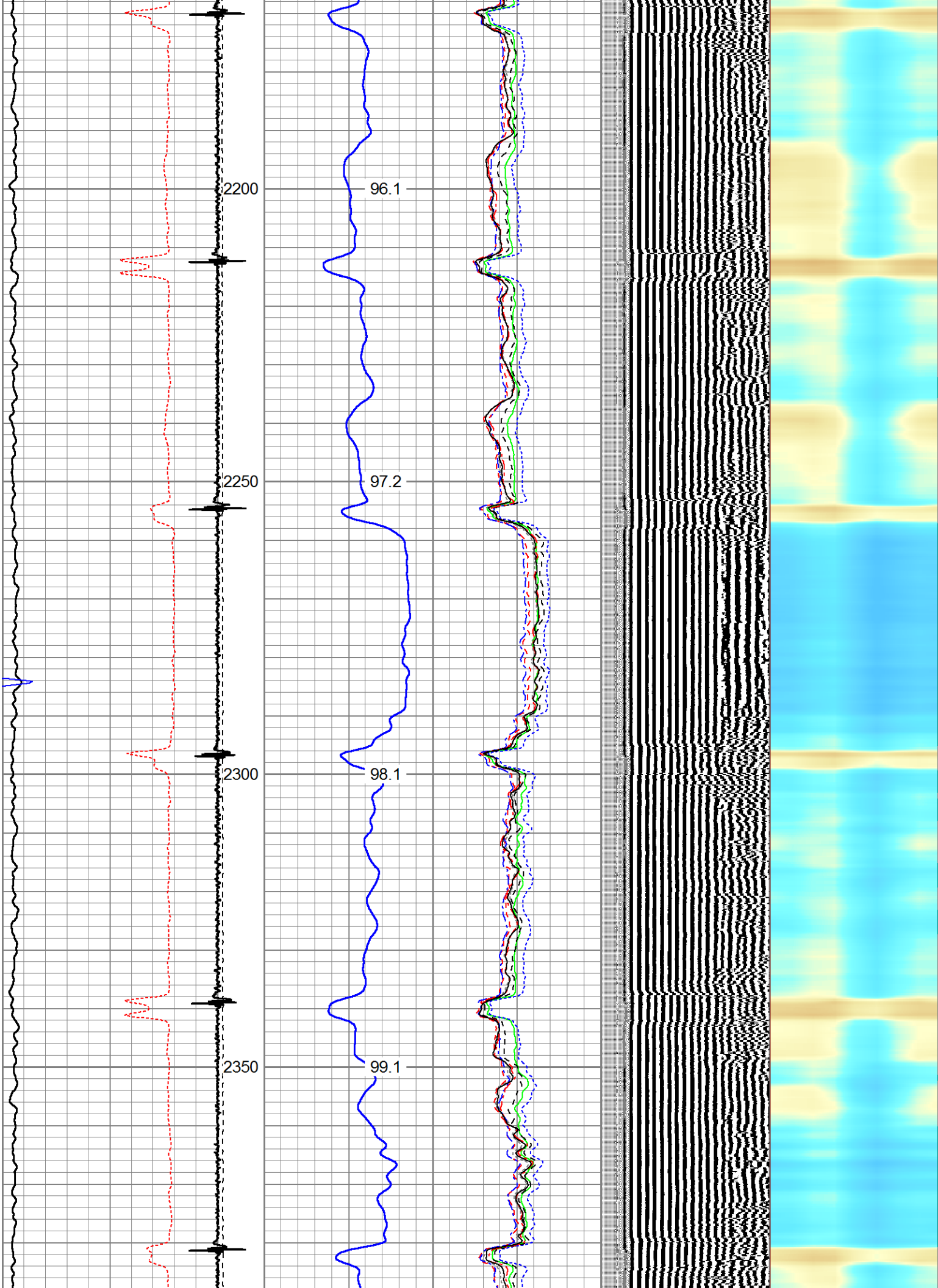


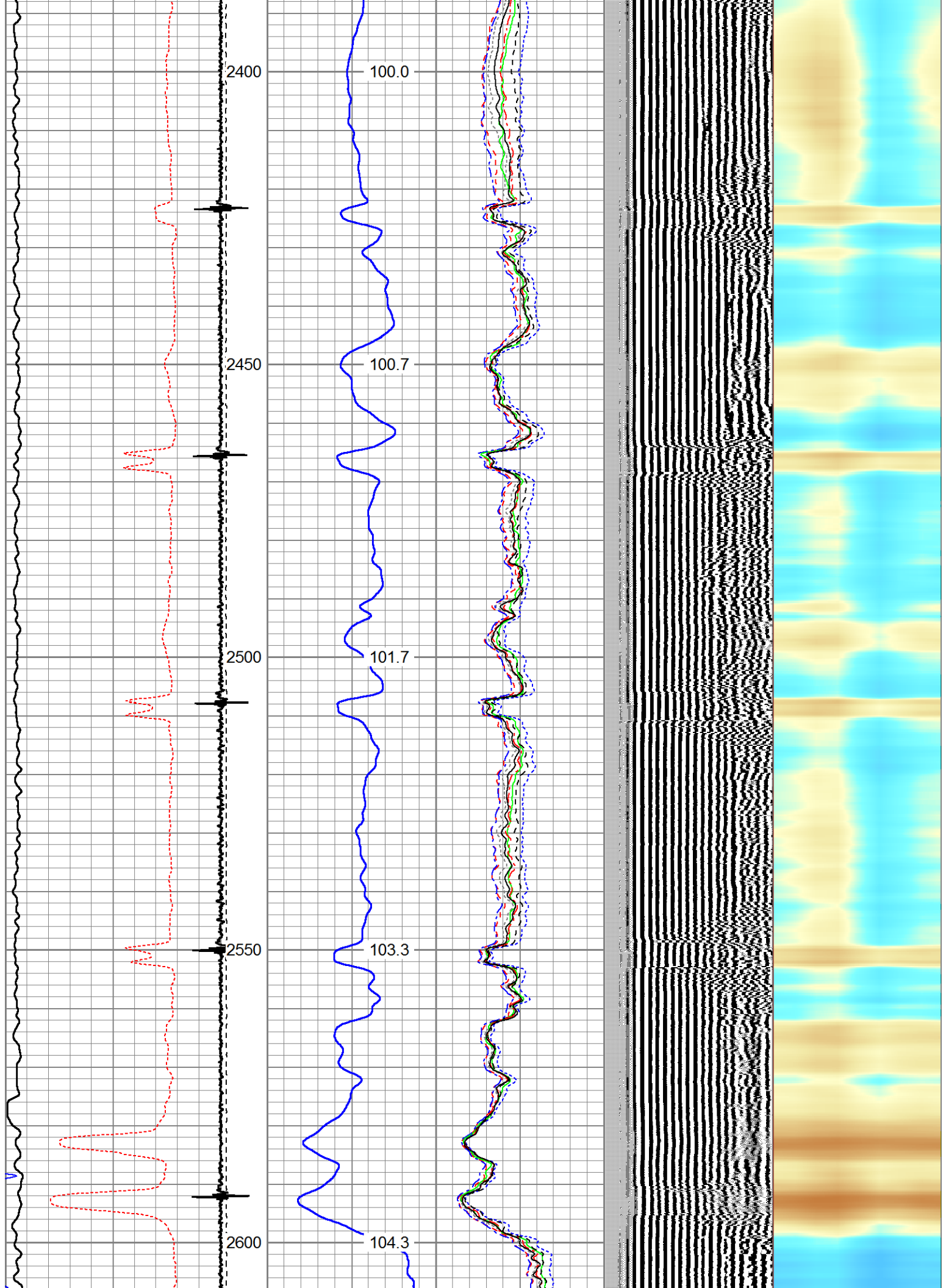


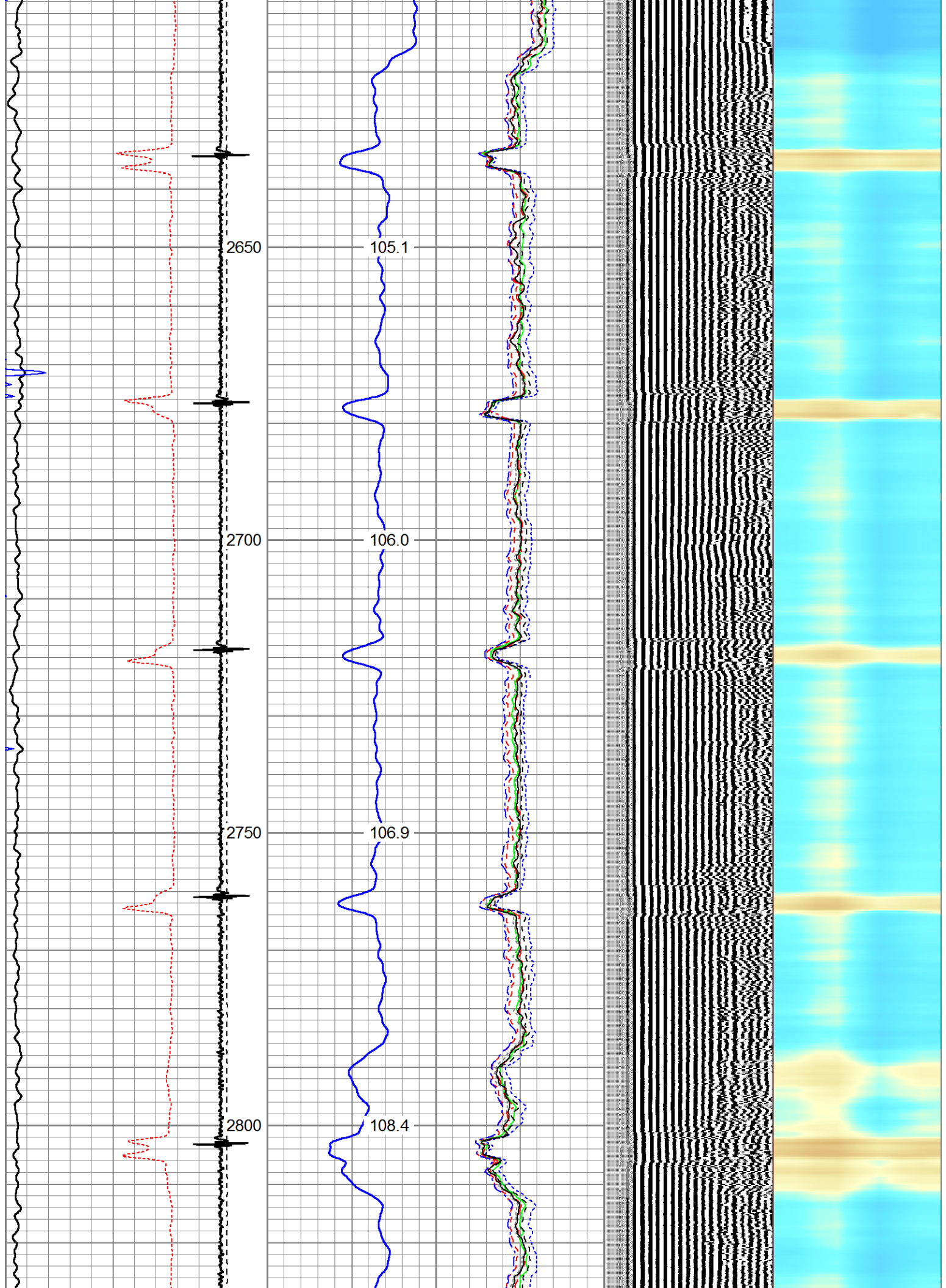


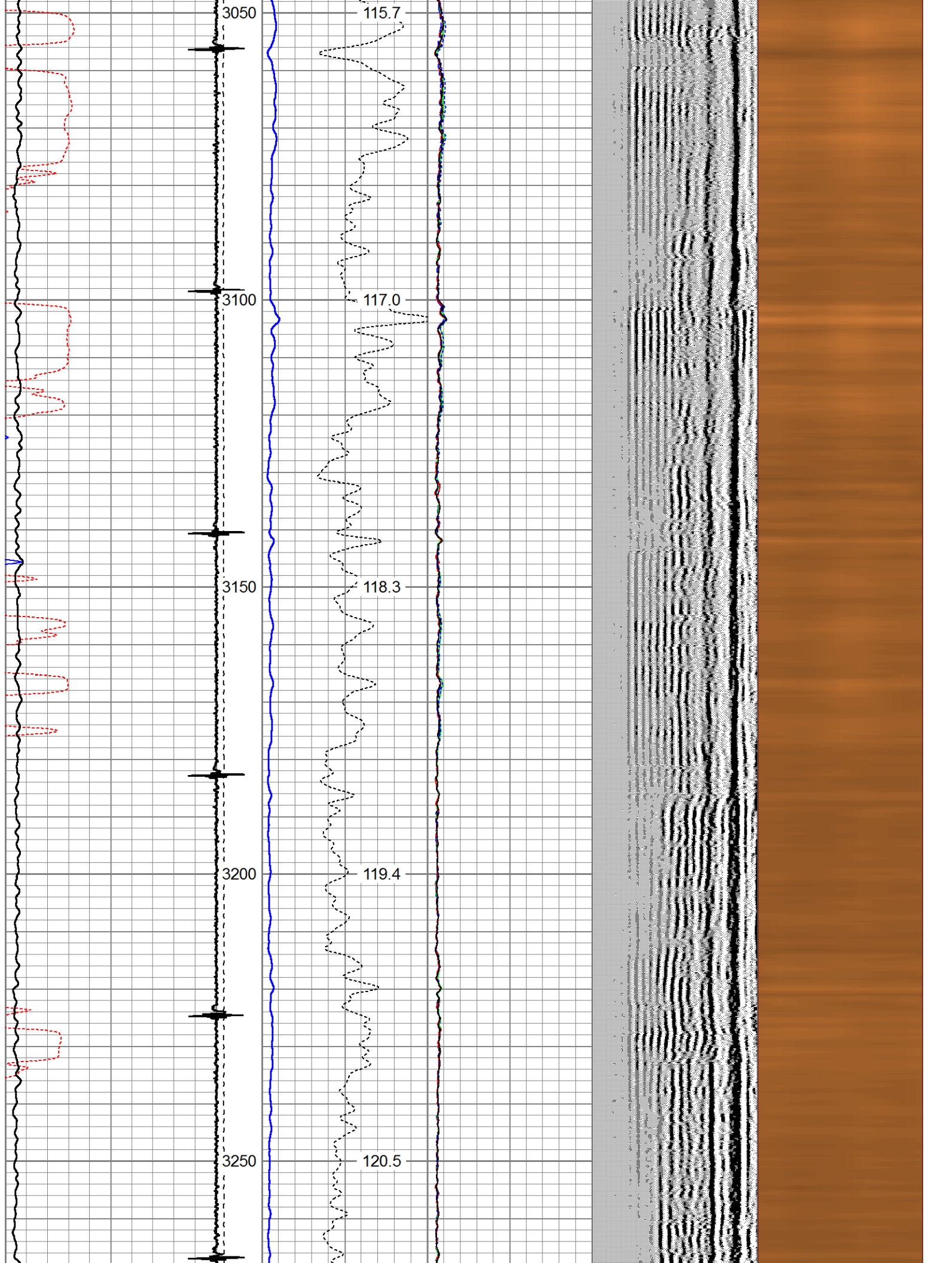


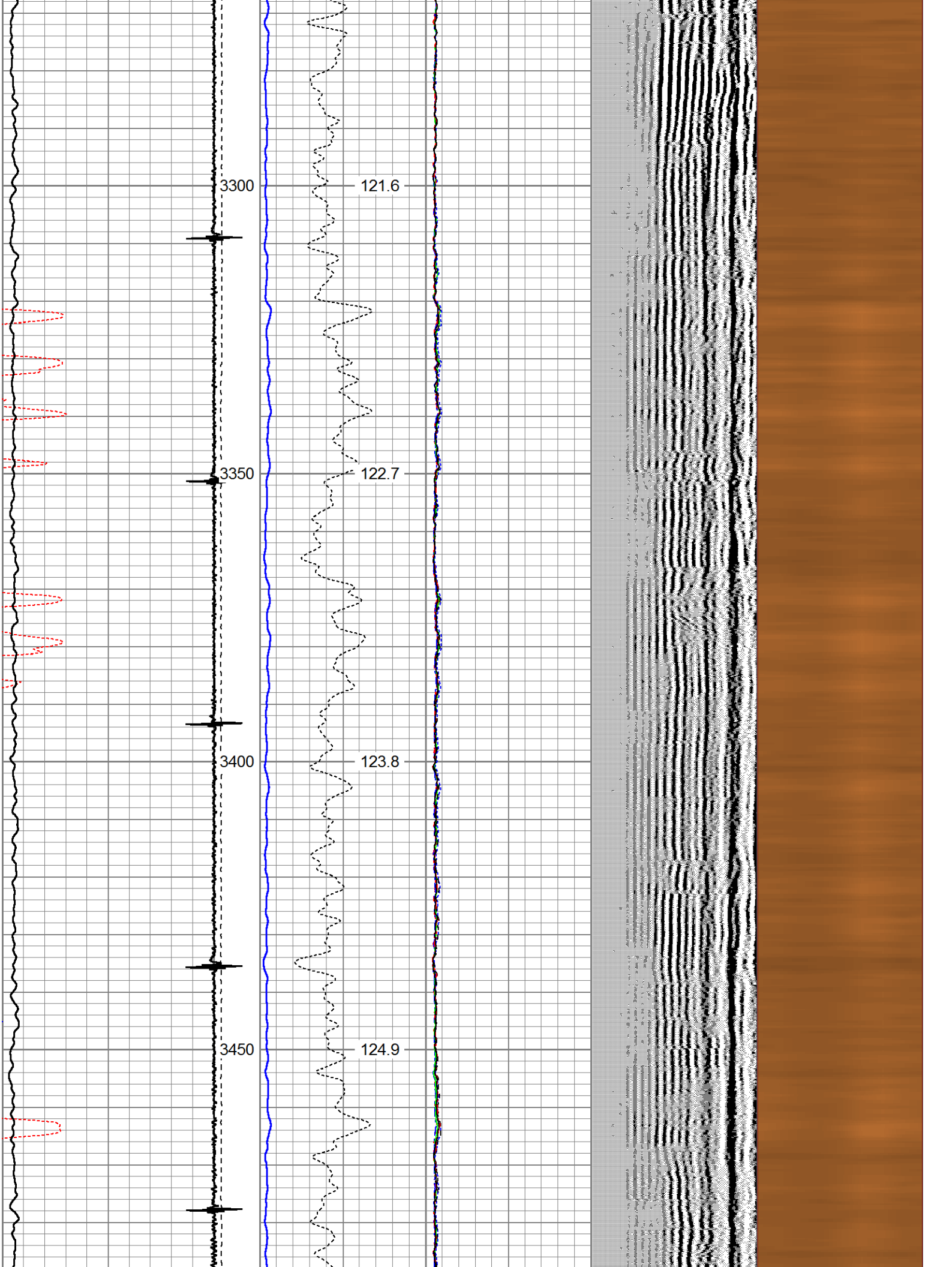


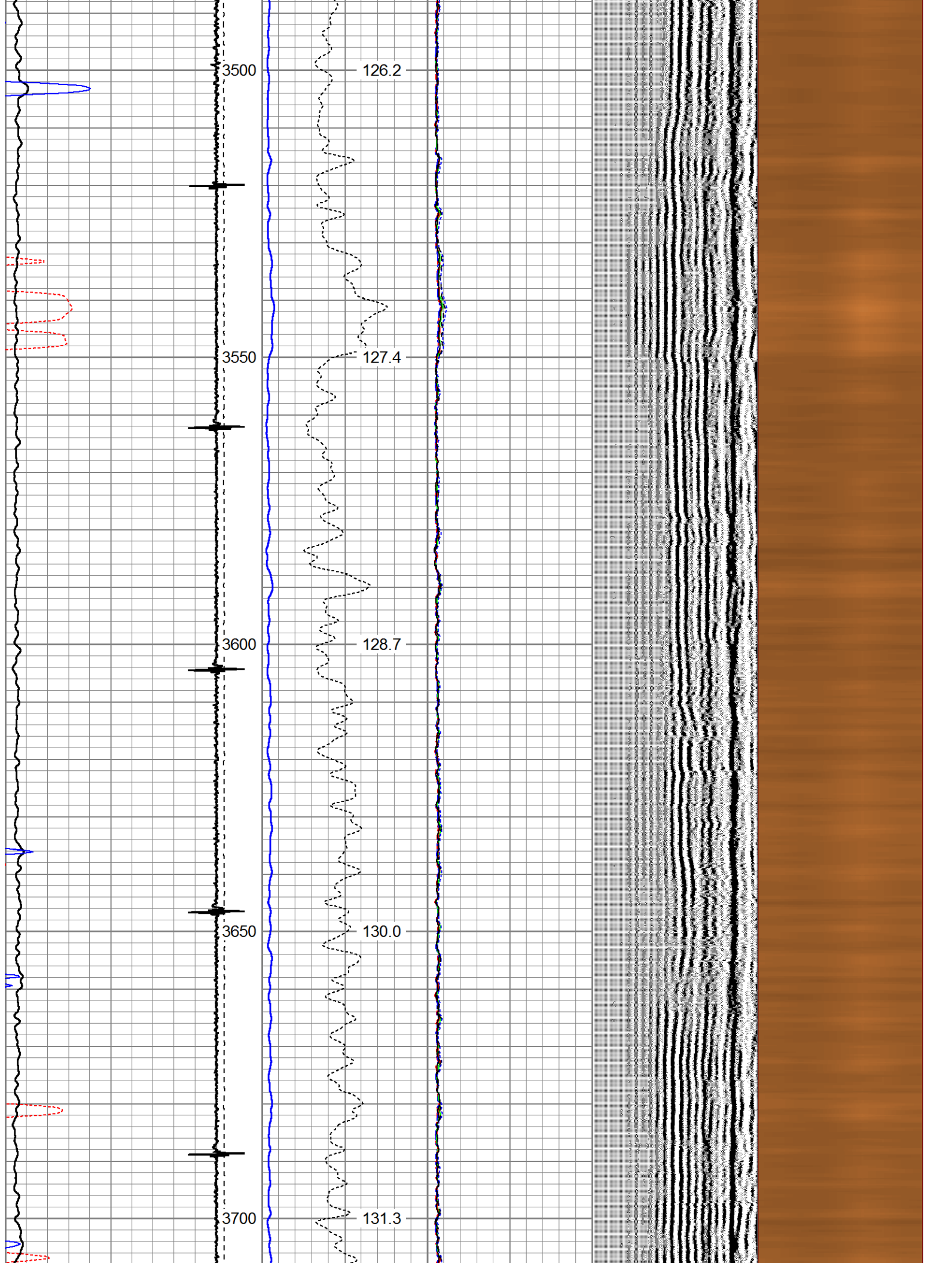


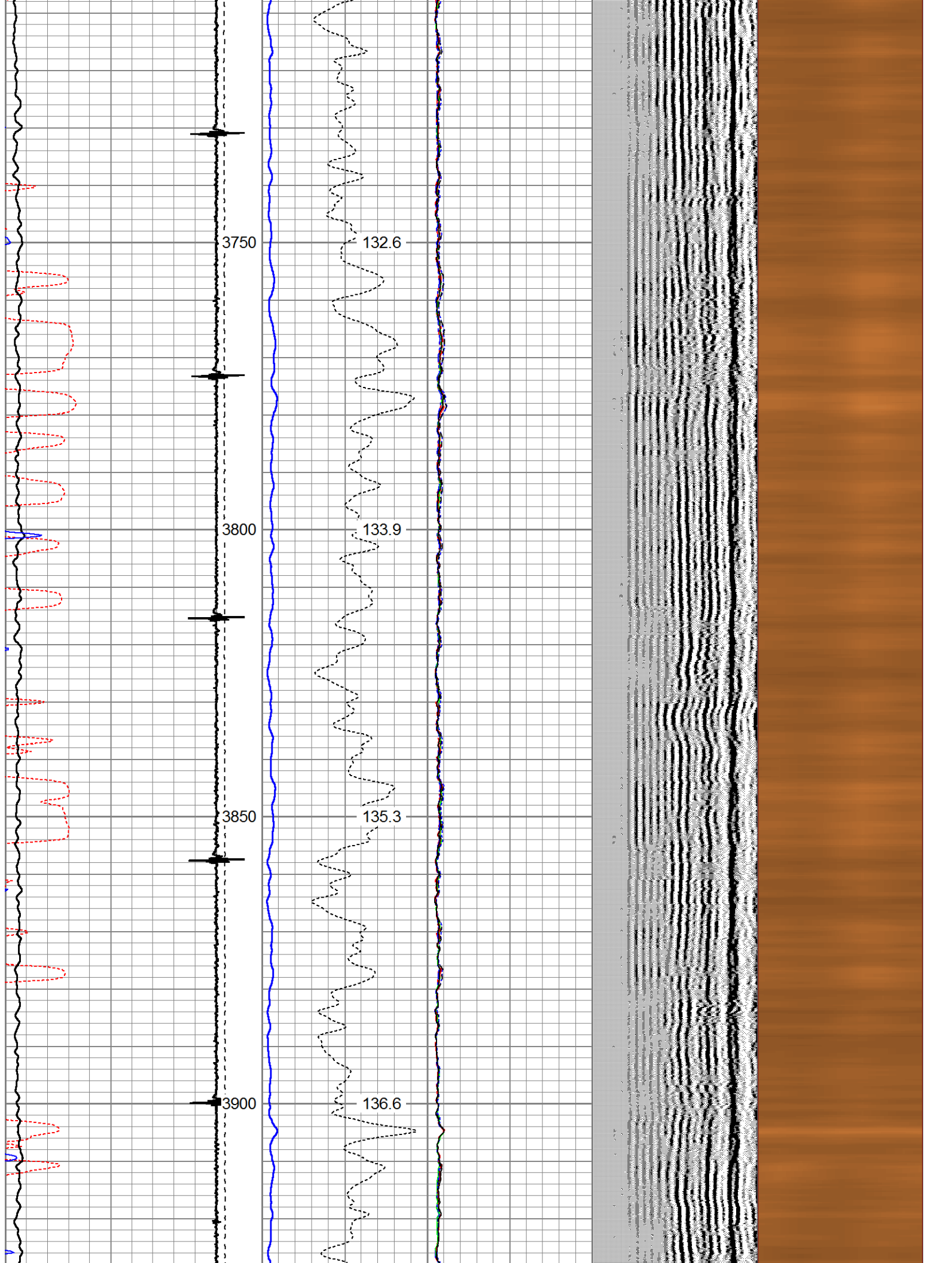


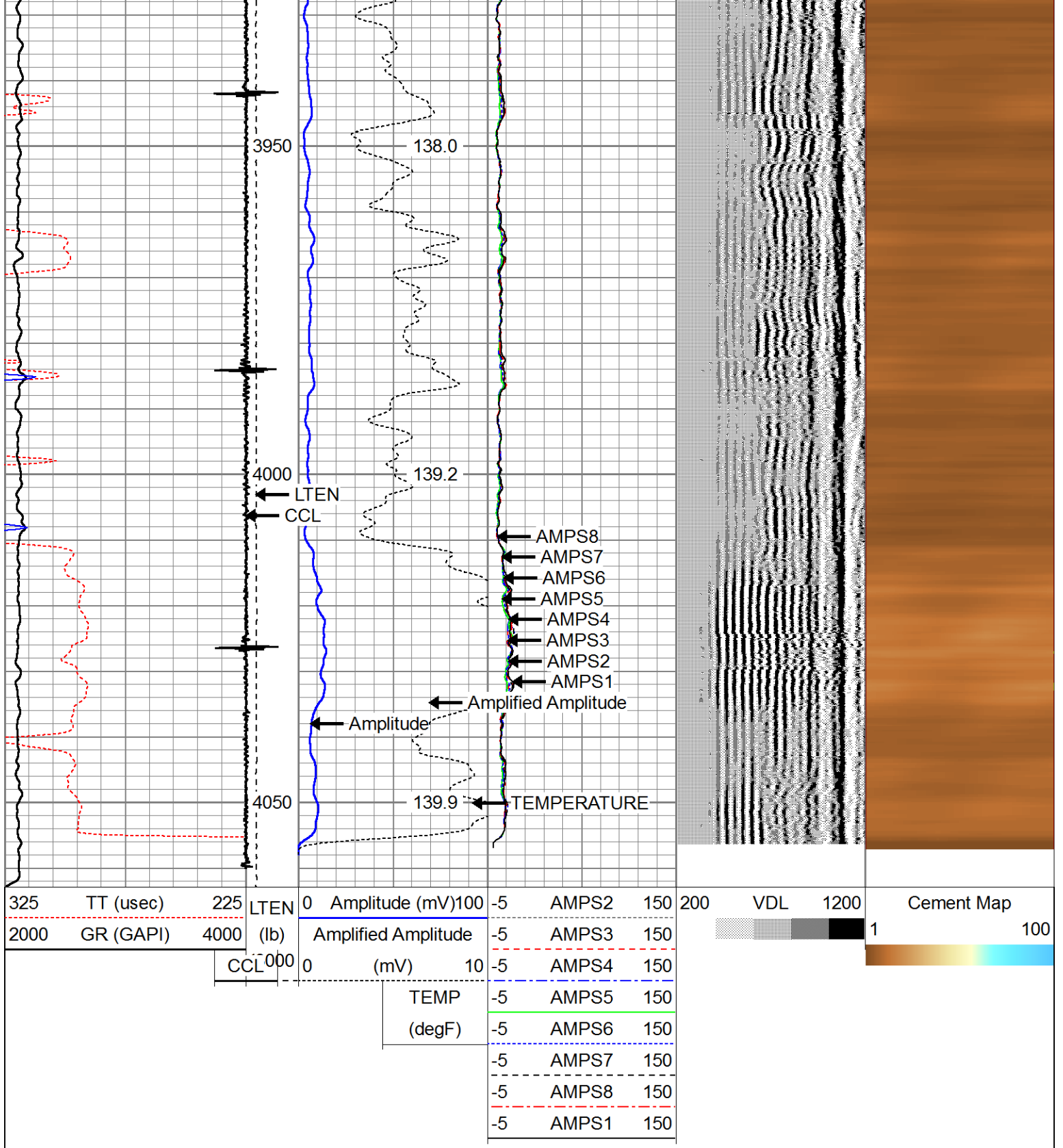












Company ANADARKO
 Well HIGHWAY 160 7-2
 Field WATTENBERG
 County WELD
 State COLORADO