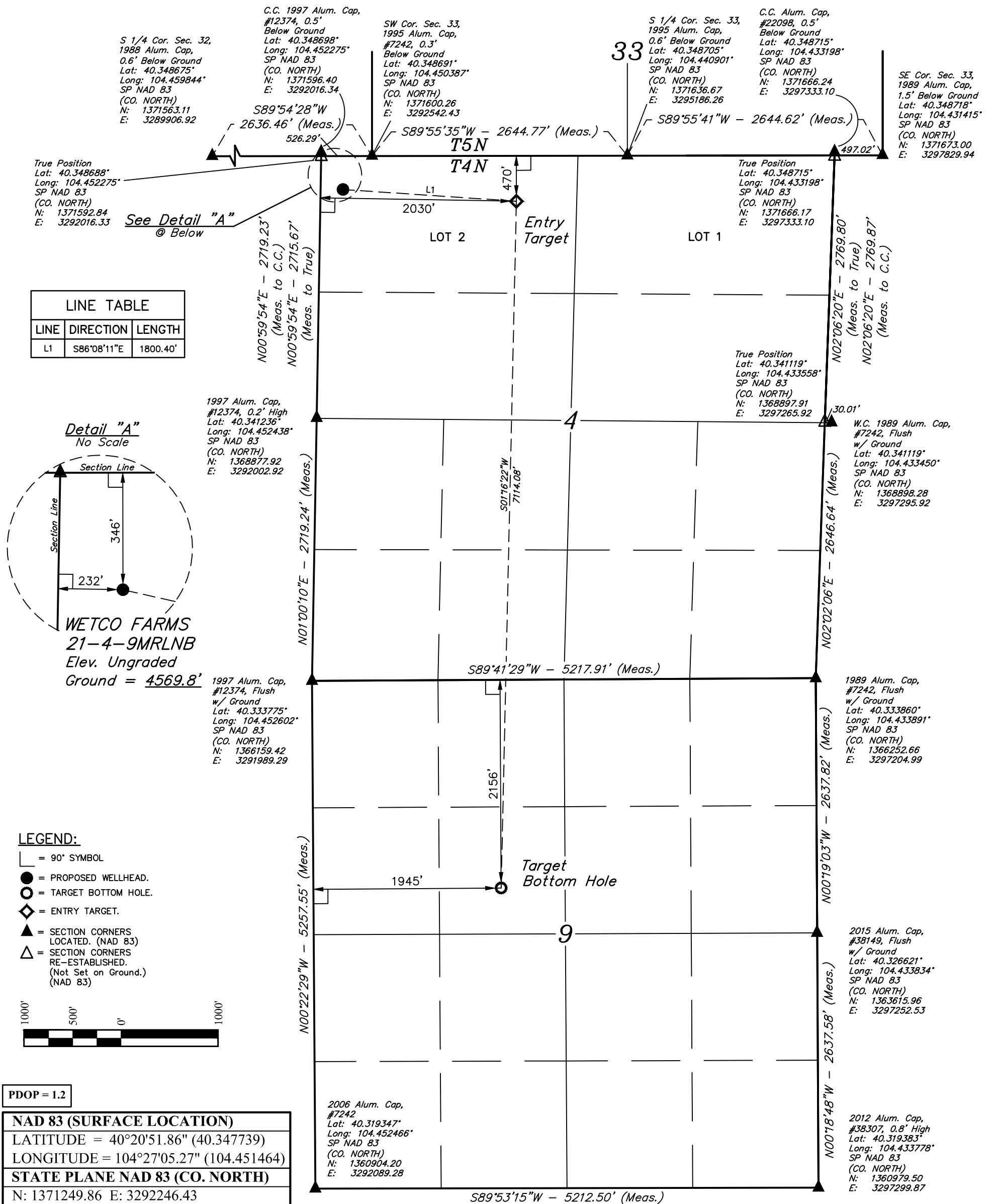



*T4N, R63W, 6th P.M.*



**CERTIFICATE**

THIS IS TO CERTIFY THAT THE ABOVE PLAN WAS PREPARED FROM FIELD NOTES OF ACTUAL SURVEYS MADE BY ME OR UNDER MY SUPERVISION, AND THAT THE SAME ARE TRUE AND CORRECT TO THE BEST OF MY KNOWLEDGE AND BELIEF.



REGISTERED LAND SURVEYOR  
REGISTRATION NO. 28285  
STATE OF COLORADO 04-03-18

REV: 1 04-03-18 D.J.W. (SHL &amp; ET CHANGE)

**BONANZA CREEK ENERGY  
OPERATING COMPANY, LLC**

**WETCO FARMS 21-4-9MRLNB  
LOT 2, SECTION 4, T4N, R63W, 6th P.M.  
WELD COUNTY, COLORADO**

<b>SURVEYED BY</b>	DALLAS NIELSEN	03-14-18	<b>SCALE</b>
<b>DRAWN BY</b>	L.C.S.	12-21-16	1" = 1000'

## WELL LOCATION PLAT

## BASIS OF BEARINGS

### BASIS OF BEARINGS

BASIS OF BEARINGS IS A G.P.S. OBSERVATION

## BASIS OF ELEVATION

**BASIS OF ELEVATION**  
USGS COOPERATIVE BASE NETWORK CONTROL STATION, DESIGNATION 'M414'. NGS DATA SHEET LISTS THE NAVD 88 ELEVATION AS BEING 4600.58 FEET



**UELS, LLC**

**Corporate Office \* 85 South 200 East  
Vernal, UT 84078 \* (435) 789-1017**

