

BONANZA CREEK OIL COMPANY

Location: COLORADO Slot: SLOT#36 WETCO FARMS 21-4-9MRLNB (346°FNL & 232°FWL, SEC.04)
Field: WELD COUNTY Well: WETCO FARMS 21-4-9MRLNB
Facility: SEC.04-T4N-R63W Wellbore: WETCO FARMS 21-4-9MRLNB PWB

Plot reference wellpath is WETCO FARMS 21-4-9MRLNB PWP (REV-A.0)

True vertical depths are referenced to RIG (17KB) (RKB)

Measured depths are referenced to RIG (17KB) (RKB)

RIG (17KB) (RKB) to Mean Sea Level: 4587 feet

Mean Sea Level to Mud line (At Slot: SLOT#36 WETCO FARMS 21-4-9MRLNB (346°FNL & 232°FWL, SEC.04)): 0 feet

Coordinates are in feet referenced to Slot

Grid System: NAD83 / Lambert Colorado SP, Northern Zone (501), US feet

* = Wellpath was transformed from a different geodetic datum

North Reference: True north

Scale: True distance

Depths are in feet

Created by: adamkat on 2018-04-06

Database: Denver

Location Information

Facility Name				Grid East (US ft)	Grid North (US ft)	Latitude	Longitude
SEC.04-T4N-R63W				3292187.300	1371323.474	40°20'52.595"N	104°27'06.023"W
Slot	Local N (ft)	Local E (ft)	Grid East (US ft)		Grid North (US ft)	Latitude	Longitude
SLOT #36 WETCO FARMS 21-4-9MRLNB (346°FNL & 232°FWL, SEC.04)	-74.38	58.30	3292246.475		1371249.792	40°20'51.860"N	104°27'05.270"W
RIG (17KB) (RKB) to Mud line (At Slot: SLOT#36 WETCO FARMS 21-4-9MRLNB (346°FNL & 232°FWL, SEC.04))				4587ft			
Mean Sea Level to Mud line (At Slot: SLOT#36 WETCO FARMS 21-4-9MRLNB (346°FNL & 232°FWL, SEC.04))				0ft			
RIG (17KB) (RKB) to Mean Sea Level				4587ft			

Well Profile Data

Design Comment	MD (ft)	Inc (°)	Az (°)	TVD (ft)	Local N (ft)	Local E (ft)	DLS (°/100ft)	VS (ft)
Tie On	17.00	0.000	80.963	17.00	0.00	0.00	0.00	0.00
End of Tangent	1650.00	0.000	80.963	1650.00	0.00	0.00	0.00	0.00
End of Build (S)	2876.29	24.526	80.963	2839.18	40.60	255.27	2.00	17.04
End of Tangent (S)	6070.75	24.526	80.963	5745.42	248.87	1564.84	0.00	104.49
End of 3D Arc (S)	7013.40	90.000	181.283	6307.00	-328.00	1804.07	10.00	720.06
End of Tangent	13935.14	90.000	181.283	6307.00	-7248.00	1649.05	0.00	7433.23

Hole and Casing Sections

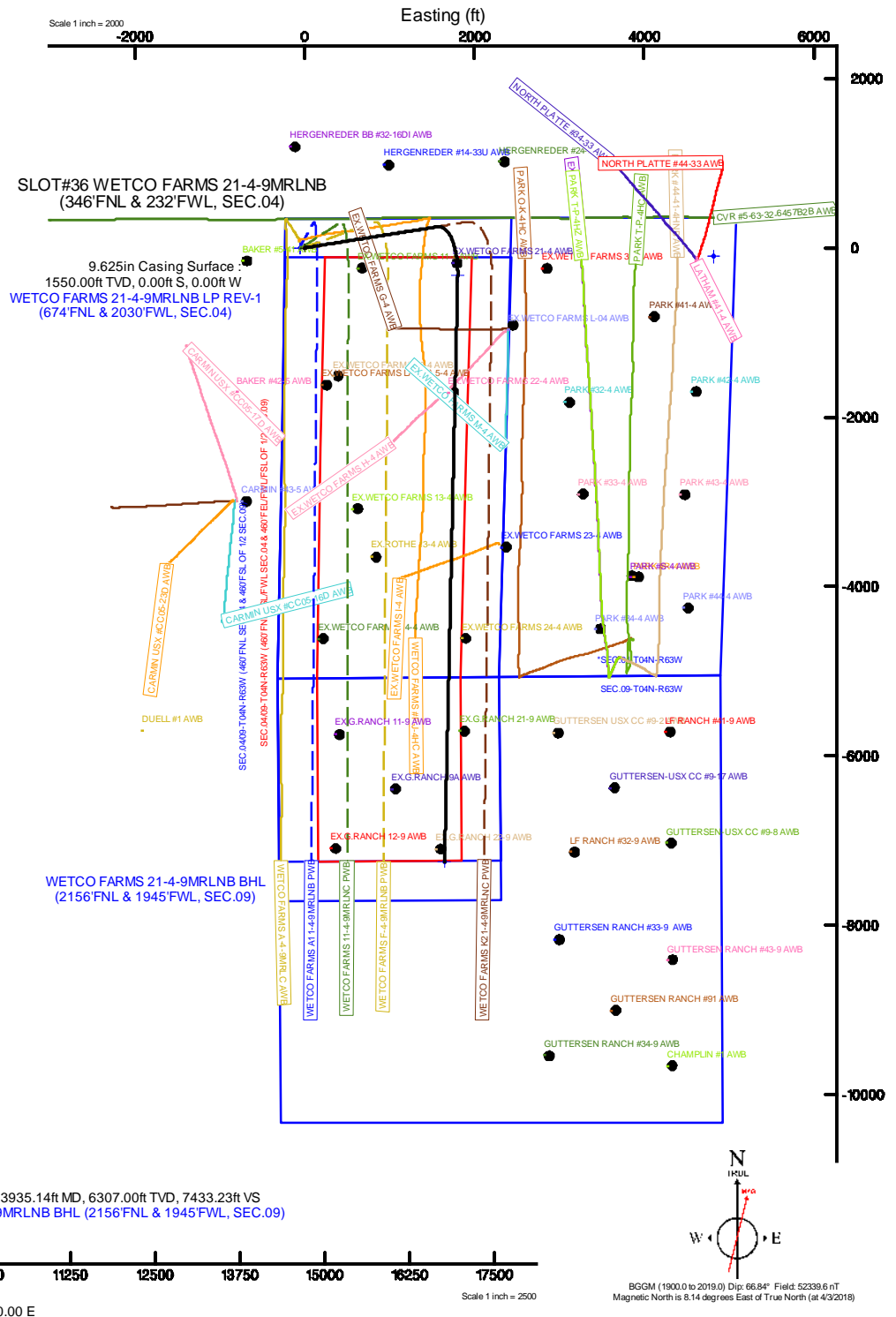
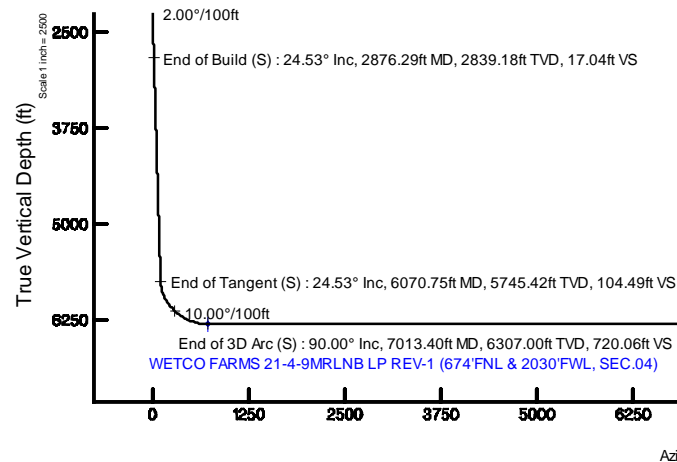
Name	Start MD (ft)	End MD (ft)	Interval (ft)	Start TVD (ft)	End TVD (ft)	Start Local N (ft)	Start Local E (ft)	End Local N (ft)	End Local E (ft)	Wellbore
9.625in Casing Surface	17.00	1550.00	1533.00	17.00	1550.00	0.00	0.00	0.00	0.00	WETCO FARMS 21-4-9MRLNB PWB
8.5in Open Hole	1550.00	13935.14	12385.14	1550.00	6307.00	0.00	0.00	-7248.00	1649.05	WETCO FARMS 21-4-9MRLNB PWB

Survey Program

Start MD (ft)	End MD (ft)	Tool	Model	Log Name/Comment	Wellbore
17.00	1550.00	BHI NavTrak	BHI NavTrak (Rotating+Axial Corr)		WETCO FARMS 21-4-9MRLNB PWB
1550.00	14206.25	BHI AutoTrak Curve	BHI AutoTrak Curve (Axial Corr, Short spacing)		WETCO FARMS 21-4-9MRLNB PWB

Bottom Hole Location

MD (ft)	Inc (°)	Az (°)	TVD (ft)	Local N (ft)	Local E (ft)	Grid East (US ft)	Grid North (US ft)	Latitude	Longitude
13935.14	90.000	181.283	6307.00	-7248.00	1649.05	3293981.04	1364022.11	40°19'40.237"N	104°26'43.978"W





Planned Wellpath Report

WETCO FARMS 21-4-9MRLNB PWP (REV-A.0)
Page 1 of 6



REFERENCE WELLPATH IDENTIFICATION			
Operator	BONANZA CREEK OIL COMPANY	Slot	SLOT#36 WETCO FARMS 21-4-9MRLNB (346'FNL & 232'FWL, SEC.04)
Area	COLORADO	Well	WETCO FARMS 21-4-9MRLNB
Field	WELD COUNTY	Wellbore	WETCO FARMS 21-4-9MRLNB PWB
Facility	SEC.04-T4N-R63W		

REPORT SETUP INFORMATION			
Projection System	NAD83 / Lambert Colorado SP, Northern Zone (501), US feet	Software System	WellArchitect® 5.0
North Reference	True	User	Adamkat
Scale	0.999958	Report Generated	4/6/2018 at 11:04:17 AM
Convergence at slot	0.68° East	Database/Source file	Denver/WETCO_FARMS_21-4-9MRLNB_PWP_REV-A.0_.xml

WELLPATH LOCATION						
	Local coordinates		Grid coordinates		Geographic coordinates	
	North[ft]	East[ft]	Easting[US ft]	Northing[US ft]	Latitude	Longitude
Slot Location	-74.38	58.30	3292246.48	1371249.79	40°20'51.860"N	104°27'05.270"W
Facility Reference Pt			3292187.30	1371323.47	40°20'52.595"N	104°27'06.023"W
Field Reference Pt			3224525.77	1254425.87	40°01'44.400"N	104°41'53.556"W

WELLPATH DATUM			
Calculation method	Minimum curvature	RIG (17'KB) (RKB) to Facility Vertical Datum	4587.00ft
Horizontal Reference Pt	Slot	RIG (17'KB) (RKB) to Mean Sea Level	4587.00ft
Vertical Reference Pt	RIG (17'KB) (RKB)	RIG (17'KB) (RKB) to Mud Line at Slot (SLOT#36 WETCO FARMS 21-4-9MRLNB (346'FNL & 232'FWL, SEC.04))	4587.00ft
MD Reference Pt	RIG (17'KB) (RKB)	Section Origin	N 0.00, E 0.00 ft
Field Vertical Reference	Mean Sea Level	Section Azimuth	167.18°



Planned Wellpath Report

WETCO FARMS 21-4-9MRLNB PWP (REV-A.0)
Page 2 of 6



REFERENCE WELLPATH IDENTIFICATION

Operator	BONANZA CREEK OIL COMPANY	Slot	SLOT#36 WETCO FARMS 21-4-9MRLNB (346'FNL & 232'FWL, SEC.04)
Area	COLORADO	Well	WETCO FARMS 21-4-9MRLNB
Field	WELD COUNTY	Wellbore	WETCO FARMS 21-4-9MRLNB PWB
Facility	SEC.04-T4N-R63W		

WELLPATH DATA (146 stations) † = interpolated/extrapolated station

MD [ft]	Inclination [°]	Azimuth [°]	TVD [ft]	Vert Sect [ft]	North [ft]	East [ft]	Latitude	Longitude	DLS [°/100ft]	Comments
0.00†	0.000	80.963	0.00	0.00	0.00	0.00	40°20'51.860"N	104°27'05.270"W	0.00	
17.00	0.000	80.963	17.00	0.00	0.00	0.00	40°20'51.860"N	104°27'05.270"W	0.00	Tie On
117.00†	0.000	80.963	117.00	0.00	0.00	0.00	40°20'51.860"N	104°27'05.270"W	0.00	
217.00†	0.000	80.963	217.00	0.00	0.00	0.00	40°20'51.860"N	104°27'05.270"W	0.00	
317.00†	0.000	80.963	317.00	0.00	0.00	0.00	40°20'51.860"N	104°27'05.270"W	0.00	
417.00†	0.000	80.963	417.00	0.00	0.00	0.00	40°20'51.860"N	104°27'05.270"W	0.00	
517.00†	0.000	80.963	517.00	0.00	0.00	0.00	40°20'51.860"N	104°27'05.270"W	0.00	
617.00†	0.000	80.963	617.00	0.00	0.00	0.00	40°20'51.860"N	104°27'05.270"W	0.00	
717.00†	0.000	80.963	717.00	0.00	0.00	0.00	40°20'51.860"N	104°27'05.270"W	0.00	
817.00†	0.000	80.963	817.00	0.00	0.00	0.00	40°20'51.860"N	104°27'05.270"W	0.00	
917.00†	0.000	80.963	917.00	0.00	0.00	0.00	40°20'51.860"N	104°27'05.270"W	0.00	
1017.00†	0.000	80.963	1017.00	0.00	0.00	0.00	40°20'51.860"N	104°27'05.270"W	0.00	
1117.00†	0.000	80.963	1117.00	0.00	0.00	0.00	40°20'51.860"N	104°27'05.270"W	0.00	
1217.00†	0.000	80.963	1217.00	0.00	0.00	0.00	40°20'51.860"N	104°27'05.270"W	0.00	
1317.00†	0.000	80.963	1317.00	0.00	0.00	0.00	40°20'51.860"N	104°27'05.270"W	0.00	
1417.00†	0.000	80.963	1417.00	0.00	0.00	0.00	40°20'51.860"N	104°27'05.270"W	0.00	
1517.00†	0.000	80.963	1517.00	0.00	0.00	0.00	40°20'51.860"N	104°27'05.270"W	0.00	
1617.00†	0.000	80.963	1617.00	0.00	0.00	0.00	40°20'51.860"N	104°27'05.270"W	0.00	
1650.00	0.000	80.963	1650.00	0.00	0.00	0.00	40°20'51.860"N	104°27'05.270"W	0.00	End of Tangent
1717.00†	1.340	80.963	1716.99	0.05	0.12	0.77	40°20'51.861"N	104°27'05.260"W	2.00	
1817.00†	3.340	80.963	1816.91	0.32	0.76	4.81	40°20'51.868"N	104°27'05.208"W	2.00	
1917.00†	5.340	80.963	1916.61	0.82	1.95	12.28	40°20'51.879"N	104°27'05.111"W	2.00	
2017.00†	7.340	80.963	2016.00	1.55	3.69	23.18	40°20'51.896"N	104°27'04.971"W	2.00	
2117.00†	9.340	80.963	2114.93	2.50	5.97	37.51	40°20'51.919"N	104°27'04.786"W	2.00	
2217.00†	11.340	80.963	2213.31	3.69	8.78	55.23	40°20'51.947"N	104°27'04.557"W	2.00	
2317.00†	13.340	80.963	2310.99	5.10	12.14	76.34	40°20'51.980"N	104°27'04.284"W	2.00	
2417.00†	15.340	80.963	2407.87	6.73	16.03	100.80	40°20'52.018"N	104°27'03.968"W	2.00	
2517.00†	17.340	80.963	2503.83	8.59	20.45	128.58	40°20'52.062"N	104°27'03.609"W	2.00	
2617.00†	19.340	80.963	2598.74	10.66	25.39	159.65	40°20'52.111"N	104°27'03.208"W	2.00	
2717.00†	21.340	80.963	2692.50	12.95	30.85	193.98	40°20'52.165"N	104°27'02.765"W	2.00	
2817.00†	23.340	80.963	2784.99	15.46	36.82	231.52	40°20'52.224"N	104°27'02.280"W	2.00	
2876.29	24.526	80.963	2839.18	17.04	40.60	255.27	40°20'52.261"N	104°27'01.973"W	2.00	End of Build (S)
2917.00†	24.526	80.963	2876.22	18.16	43.25	271.96	40°20'52.287"N	104°27'01.758"W	0.00	
3017.00†	24.526	80.963	2967.20	20.90	49.77	312.95	40°20'52.352"N	104°27'01.228"W	0.00	
3117.00†	24.526	80.963	3058.17	23.63	56.29	353.95	40°20'52.416"N	104°27'00.699"W	0.00	
3217.00†	24.526	80.963	3149.15	26.37	62.81	394.94	40°20'52.481"N	104°27'00.169"W	0.00	
3317.00†	24.526	80.963	3240.13	29.11	69.33	435.94	40°20'52.545"N	104°26'59.640"W	0.00	
3417.00†	24.526	80.963	3331.11	31.85	75.85	476.93	40°20'52.610"N	104°26'59.110"W	0.00	
3517.00†	24.526	80.963	3422.08	34.58	82.37	517.93	40°20'52.674"N	104°26'58.581"W	0.00	
3617.00†	24.526	80.963	3513.06	37.32	88.89	558.92	40°20'52.738"N	104°26'58.051"W	0.00	
3717.00†	24.526	80.963	3604.04	40.06	95.41	599.92	40°20'52.803"N	104°26'57.522"W	0.00	
3817.00†	24.526	80.963	3695.02	42.79	101.93	640.91	40°20'52.867"N	104°26'56.992"W	0.00	
3917.00†	24.526	80.963	3785.99	45.53	108.45	681.91	40°20'52.932"N	104°26'56.463"W	0.00	
4017.00†	24.526	80.963	3876.97	48.27	114.97	722.90	40°20'52.996"N	104°26'55.933"W	0.00	
4117.00†	24.526	80.963	3967.95	51.01	121.49	763.90	40°20'53.060"N	104°26'55.404"W	0.00	



Planned Wellpath Report

WETCO FARMS 21-4-9MRLNB PWP (REV-A.0)
Page 3 of 6



REFERENCE WELLPATH IDENTIFICATION

Operator	BONANZA CREEK OIL COMPANY	Slot	SLOT#36 WETCO FARMS 21-4-9MRLNB (346'FNL & 232'FWL, SEC.04)
Area	COLORADO	Well	WETCO FARMS 21-4-9MRLNB
Field	WELD COUNTY	Wellbore	WETCO FARMS 21-4-9MRLNB PWB
Facility	SEC.04-T4N-R63W		

WELLPATH DATA (146 stations) † = interpolated/extrapolated station

MD [ft]	Inclination [°]	Azimuth [°]	TVD [ft]	Vert Sect [ft]	North [ft]	East [ft]	Latitude	Longitude	DLS [°/100ft]	Comments
4217.00†	24.526	80.963	4058.93	53.74	128.01	804.90	40°20'53.125"N	104°26'54.874"W	0.00	
4317.00†	24.526	80.963	4149.90	56.48	134.53	845.89	40°20'53.189"N	104°26'54.345"W	0.00	
4417.00†	24.526	80.963	4240.88	59.22	141.05	886.89	40°20'53.254"N	104°26'53.815"W	0.00	
4517.00†	24.526	80.963	4331.86	61.96	147.57	927.88	40°20'53.318"N	104°26'53.286"W	0.00	
4617.00†	24.526	80.963	4422.84	64.69	154.09	968.88	40°20'53.382"N	104°26'52.757"W	0.00	
4717.00†	24.526	80.963	4513.81	67.43	160.61	1009.87	40°20'53.447"N	104°26'52.227"W	0.00	
4817.00†	24.526	80.963	4604.79	70.17	167.13	1050.87	40°20'53.511"N	104°26'51.698"W	0.00	
4917.00†	24.526	80.963	4695.77	72.90	173.65	1091.86	40°20'53.576"N	104°26'51.168"W	0.00	
5017.00†	24.526	80.963	4786.74	75.64	180.17	1132.86	40°20'53.640"N	104°26'50.639"W	0.00	
5117.00†	24.526	80.963	4877.72	78.38	186.69	1173.85	40°20'53.705"N	104°26'50.109"W	0.00	
5217.00†	24.526	80.963	4968.70	81.12	193.21	1214.85	40°20'53.769"N	104°26'49.580"W	0.00	
5317.00†	24.526	80.963	5059.68	83.85	199.73	1255.84	40°20'53.833"N	104°26'49.050"W	0.00	
5417.00†	24.526	80.963	5150.65	86.59	206.25	1296.84	40°20'53.898"N	104°26'48.521"W	0.00	
5517.00†	24.526	80.963	5241.63	89.33	212.77	1337.83	40°20'53.962"N	104°26'47.991"W	0.00	
5617.00†	24.526	80.963	5332.61	92.07	219.29	1378.83	40°20'54.027"N	104°26'47.462"W	0.00	
5717.00†	24.526	80.963	5423.59	94.80	225.81	1419.82	40°20'54.091"N	104°26'46.932"W	0.00	
5817.00†	24.526	80.963	5514.56	97.54	232.33	1460.82	40°20'54.155"N	104°26'46.403"W	0.00	
5917.00†	24.526	80.963	5605.54	100.28	238.85	1501.81	40°20'54.220"N	104°26'45.873"W	0.00	
6017.00†	24.526	80.963	5696.52	103.02	245.37	1542.81	40°20'54.284"N	104°26'45.344"W	0.00	
6070.75	24.526	80.963	5745.42	104.49	248.87	1564.84	40°20'54.319"N	104°26'45.059"W	0.00	End of Tangent (S)
6117.00†	24.177	92.163	5787.58	107.57	250.02	1583.80	40°20'54.330"N	104°26'44.814"W	10.00	
6217.00†	26.178	115.340	5878.29	126.54	239.79	1624.30	40°20'54.229"N	104°26'44.291"W	10.00	
6317.00†	31.207	133.466	5966.15	161.81	212.45	1663.14	40°20'53.959"N	104°26'43.790"W	10.00	
6417.00†	38.076	146.325	6048.49	212.30	168.86	1699.13	40°20'53.528"N	104°26'43.325"W	10.00	
6517.00†	45.960	155.556	6122.79	276.48	110.33	1731.18	40°20'52.950"N	104°26'42.911"W	10.00	
6617.00†	54.408	162.543	6186.81	352.40	38.64	1758.32	40°20'52.241"N	104°26'42.561"W	10.00	
6717.00†	63.181	168.166	6238.60	437.76	-44.03	1779.72	40°20'51.424"N	104°26'42.284"W	10.00	
6817.00†	72.144	172.969	6276.59	529.96	-135.17	1794.74	40°20'50.524"N	104°26'42.090"W	10.00	
6917.00†	81.213	177.304	6299.62	626.20	-232.01	1802.91	40°20'49.567"N	104°26'41.985"W	10.00	
7013.40	90.000	181.283	6307.00†	720.06	-328.00	1804.07	40°20'48.618"N	104°26'41.970"W	10.00	End of 3D Arc (S)
7017.00†	90.000	181.283	6307.00	723.55	-331.60	1803.99	40°20'48.583"N	104°26'41.971"W	0.00	
7117.00†	90.000	181.283	6307.00	820.54	-431.58	1801.75	40°20'47.595"N	104°26'42.000"W	0.00	
7217.00†	90.000	181.283	6307.00	917.53	-531.55	1799.51	40°20'46.607"N	104°26'42.029"W	0.00	
7317.00†	90.000	181.283	6307.00	1014.51	-631.53	1797.27	40°20'45.619"N	104°26'42.058"W	0.00	
7417.00†	90.000	181.283	6307.00	1111.50	-731.50	1795.03	40°20'44.631"N	104°26'42.087"W	0.00	
7517.00†	90.000	181.283	6307.00	1208.49	-831.48	1792.79	40°20'43.643"N	104°26'42.116"W	0.00	
7617.00†	90.000	181.283	6307.00	1305.47	-931.45	1790.55	40°20'42.655"N	104°26'42.145"W	0.00	
7717.00†	90.000	181.283	6307.00	1402.46	-1031.43	1788.31	40°20'41.667"N	104°26'42.174"W	0.00	
7817.00†	90.000	181.283	6307.00	1499.45	-1131.40	1786.07	40°20'40.679"N	104°26'42.203"W	0.00	
7917.00†	90.000	181.283	6307.00	1596.43	-1231.38	1783.83	40°20'39.691"N	104°26'42.232"W	0.00	
8017.00†	90.000	181.283	6307.00	1693.42	-1331.35	1781.59	40°20'38.703"N	104°26'42.261"W	0.00	
8117.00†	90.000	181.283	6307.00	1790.41	-1431.33	1779.36	40°20'37.715"N	104°26'42.290"W	0.00	
8217.00†	90.000	181.283	6307.00	1887.39	-1531.30	1777.12	40°20'36.727"N	104°26'42.319"W	0.00	
8317.00†	90.000	181.283	6307.00	1984.38	-1631.28	1774.88	40°20'35.740"N	104°26'42.348"W	0.00	
8417.00†	90.000	181.283	6307.00	2081.37	-1731.25	1772.64	40°20'34.752"N	104°26'42.377"W	0.00	



Planned Wellpath Report

WETCO FARMS 21-4-9MRLNB PWP (REV-A.0)
Page 4 of 6



REFERENCE WELLPATH IDENTIFICATION

Operator	BONANZA CREEK OIL COMPANY	Slot	SLOT#36 WETCO FARMS 21-4-9MRLNB (346'FNL & 232'FWL, SEC.04)
Area	COLORADO	Well	WETCO FARMS 21-4-9MRLNB
Field	WELD COUNTY	Wellbore	WETCO FARMS 21-4-9MRLNB PWB
Facility	SEC.04-T4N-R63W		

WELLPATH DATA (146 stations) † = interpolated/extrapolated station

MD [ft]	Inclination [°]	Azimuth [°]	TVD [ft]	Vert Sect [ft]	North [ft]	East [ft]	Latitude	Longitude	DLS [°/100ft]	Comments
8517.00†	90.000	181.283	6307.00	2178.35	-1831.23	1770.40	40°20'33.764"N	104°26'42.406"W	0.00	
8617.00†	90.000	181.283	6307.00	2275.34	-1931.20	1768.16	40°20'32.776"N	104°26'42.435"W	0.00	
8717.00†	90.000	181.283	6307.00	2372.33	-2031.18	1765.92	40°20'31.788"N	104°26'42.464"W	0.00	
8817.00†	90.000	181.283	6307.00	2469.31	-2131.15	1763.68	40°20'30.800"N	104°26'42.493"W	0.00	
8917.00†	90.000	181.283	6307.00	2566.30	-2231.13	1761.44	40°20'29.812"N	104°26'42.522"W	0.00	
9017.00†	90.000	181.283	6307.00	2663.29	-2331.10	1759.20	40°20'28.824"N	104°26'42.551"W	0.00	
9117.00†	90.000	181.283	6307.00	2760.27	-2431.07	1756.96	40°20'27.836"N	104°26'42.580"W	0.00	
9217.00†	90.000	181.283	6307.00	2857.26	-2531.05	1754.72	40°20'26.848"N	104°26'42.609"W	0.00	
9317.00†	90.000	181.283	6307.00	2954.25	-2631.02	1752.48	40°20'25.860"N	104°26'42.638"W	0.00	
9417.00†	90.000	181.283	6307.00	3051.23	-2731.00	1750.24	40°20'24.872"N	104°26'42.667"W	0.00	
9517.00†	90.000	181.283	6307.00	3148.22	-2830.97	1748.00	40°20'23.884"N	104°26'42.696"W	0.00	
9617.00†	90.000	181.283	6307.00	3245.21	-2930.95	1745.76	40°20'22.897"N	104°26'42.725"W	0.00	
9717.00†	90.000	181.283	6307.00	3342.20	-3030.92	1743.52	40°20'21.909"N	104°26'42.754"W	0.00	
9817.00†	90.000	181.283	6307.00	3439.18	-3130.90	1741.28	40°20'20.921"N	104°26'42.784"W	0.00	
9917.00†	90.000	181.283	6307.00	3536.17	-3230.87	1739.04	40°20'19.933"N	104°26'42.813"W	0.00	
10017.00†	90.000	181.283	6307.00	3633.16	-3330.85	1736.80	40°20'18.945"N	104°26'42.842"W	0.00	
10117.00†	90.000	181.283	6307.00	3730.14	-3430.82	1734.56	40°20'17.957"N	104°26'42.871"W	0.00	
10217.00†	90.000	181.283	6307.00	3827.13	-3530.80	1732.32	40°20'16.969"N	104°26'42.900"W	0.00	
10317.00†	90.000	181.283	6307.00	3924.12	-3630.77	1730.08	40°20'15.981"N	104°26'42.929"W	0.00	
10417.00†	90.000	181.283	6307.00	4021.10	-3730.75	1727.85	40°20'14.993"N	104°26'42.958"W	0.00	
10517.00†	90.000	181.283	6307.00	4118.09	-3830.72	1725.61	40°20'14.005"N	104°26'42.987"W	0.00	
10617.00†	90.000	181.283	6307.00	4215.08	-3930.70	1723.37	40°20'13.017"N	104°26'43.016"W	0.00	
10717.00†	90.000	181.283	6307.00	4312.06	-4030.67	1721.13	40°20'12.029"N	104°26'43.045"W	0.00	
10817.00†	90.000	181.283	6307.00	4409.05	-4130.65	1718.89	40°20'11.041"N	104°26'43.074"W	0.00	
10917.00†	90.000	181.283	6307.00	4506.04	-4230.62	1716.65	40°20'10.053"N	104°26'43.103"W	0.00	
11017.00†	90.000	181.283	6307.00	4603.02	-4330.60	1714.41	40°20'09.066"N	104°26'43.132"W	0.00	
11117.00†	90.000	181.283	6307.00	4700.01	-4430.57	1712.17	40°20'08.078"N	104°26'43.161"W	0.00	
11217.00†	90.000	181.283	6307.00	4797.00	-4530.55	1709.93	40°20'07.090"N	104°26'43.190"W	0.00	
11317.00†	90.000	181.283	6307.00	4893.98	-4630.52	1707.69	40°20'06.102"N	104°26'43.219"W	0.00	
11417.00†	90.000	181.283	6307.00	4990.97	-4730.50	1705.45	40°20'05.114"N	104°26'43.248"W	0.00	
11517.00†	90.000	181.283	6307.00	5087.96	-4830.47	1703.21	40°20'04.126"N	104°26'43.277"W	0.00	
11617.00†	90.000	181.283	6307.00	5184.94	-4930.45	1700.97	40°20'03.138"N	104°26'43.306"W	0.00	
11717.00†	90.000	181.283	6307.00	5281.93	-5030.42	1698.73	40°20'02.150"N	104°26'43.335"W	0.00	
11817.00†	90.000	181.283	6307.00	5378.92	-5130.40	1696.49	40°20'01.162"N	104°26'43.364"W	0.00	
11917.00†	90.000	181.283	6307.00	5475.91	-5230.37	1694.25	40°20'00.174"N	104°26'43.393"W	0.00	
12017.00†	90.000	181.283	6307.00	5572.89	-5330.35	1692.01	40°19'59.186"N	104°26'43.422"W	0.00	
12117.00†	90.000	181.283	6307.00	5669.88	-5430.32	1689.77	40°19'58.198"N	104°26'43.451"W	0.00	
12217.00†	90.000	181.283	6307.00	5766.87	-5530.30	1687.53	40°19'57.210"N	104°26'43.480"W	0.00	
12317.00†	90.000	181.283	6307.00	5863.85	-5630.27	1685.29	40°19'56.223"N	104°26'43.509"W	0.00	
12417.00†	90.000	181.283	6307.00	5960.84	-5730.25	1683.05	40°19'55.235"N	104°26'43.538"W	0.00	
12517.00†	90.000	181.283	6307.00	6057.83	-5830.22	1680.81	40°19'54.247"N	104°26'43.567"W	0.00	
12617.00†	90.000	181.283	6307.00	6154.81	-5930.20	1678.57	40°19'53.259"N	104°26'43.596"W	0.00	
12717.00†	90.000	181.283	6307.00	6251.80	-6030.17	1676.33	40°19'52.271"N	104°26'43.625"W	0.00	
12817.00†	90.000	181.283	6307.00	6348.79	-6130.15	1674.10	40°19'51.283"N	104°26'43.654"W	0.00	
12917.00†	90.000	181.283	6307.00	6445.77	-6230.12	1671.86	40°19'50.295"N	104°26'43.683"W	0.00	



Planned Wellpath Report

WETCO FARMS 21-4-9MRLNB PWP (REV-A.0)
Page 5 of 6



REFERENCE WELLPATH IDENTIFICATION

Operator	BONANZA CREEK OIL COMPANY	Slot	SLOT#36 WETCO FARMS 21-4-9MRLNB (346°FNL & 232°FWL, SEC.04)
Area	COLORADO	Well	WETCO FARMS 21-4-9MRLNB
Field	WELD COUNTY	Wellbore	WETCO FARMS 21-4-9MRLNB PWB
Facility	SEC.04-T4N-R63W		

WELLPATH DATA (146 stations) † = interpolated/extrapolated station

MD [ft]	Inclination [°]	Azimuth [°]	TVD [ft]	Vert Sect [ft]	North [ft]	East [ft]	Latitude	Longitude	DLS [°/100ft]	Comments
13017.00†	90.000	181.283	6307.00	6542.76	-6330.10	1669.62	40°19'49.307"N	104°26'43.712"W	0.00	
13117.00†	90.000	181.283	6307.00	6639.75	-6430.07	1667.38	40°19'48.319"N	104°26'43.741"W	0.00	
13217.00†	90.000	181.283	6307.00	6736.73	-6530.05	1665.14	40°19'47.331"N	104°26'43.770"W	0.00	
13317.00†	90.000	181.283	6307.00	6833.72	-6630.02	1662.90	40°19'46.343"N	104°26'43.799"W	0.00	
13417.00†	90.000	181.283	6307.00	6930.71	-6730.00	1660.66	40°19'45.355"N	104°26'43.828"W	0.00	
13517.00†	90.000	181.283	6307.00	7027.69	-6829.97	1658.42	40°19'44.367"N	104°26'43.857"W	0.00	
13617.00†	90.000	181.283	6307.00	7124.68	-6929.95	1656.18	40°19'43.379"N	104°26'43.886"W	0.00	
13717.00†	90.000	181.283	6307.00	7221.67	-7029.92	1653.94	40°19'42.392"N	104°26'43.915"W	0.00	
13817.00†	90.000	181.283	6307.00	7318.65	-7129.90	1651.70	40°19'41.404"N	104°26'43.944"W	0.00	
13917.00†	90.000	181.283	6307.00	7415.64	-7229.87	1649.46	40°19'40.416"N	104°26'43.973"W	0.00	
13935.14	90.000	181.283	6307.00 ²	7433.23	-7248.00	1649.05	40°19'40.237"N	104°26'43.978"W	0.00	End of Tangent

HOLE & CASING SECTIONS - Ref Wellbore: WETCO FARMS 21-4-9MRLNB PWB Ref Wellpath: WETCO FARMS 21-4-9MRLNB PWP (REV-A.0)

String/Diameter	Start MD [ft]	End MD [ft]	Interval [ft]	Start TVD [ft]	End TVD [ft]	Start N/S [ft]	Start E/W [ft]	End N/S [ft]	End E/W [ft]
9.625in Casing Surface	17.00	1550.00	1533.00	17.00	1550.00	0.00	0.00	0.00	0.00
8.5in Open Hole	1550.00	13935.14	12385.14	1550.00	6307.00	0.00	0.00	-7248.00	1649.05

TARGETS

Name	MD [ft]	TVD [ft]	North [ft]	East [ft]	Grid East [US ft]	Grid North [US ft]	Latitude	Longitude	Shape
SEC.04/09-T04N-R63W (WESTERN HALF SECTION)		0.00	0.00	-59.93	3292186.55	1371249.08	40°20'51.860"N	104°27'06.044"W	polygon
*SEC.04-T04N-R63W		103.00	-99.67	4818.24	3297065.35	1371207.10	40°20'50.870"N	104°26'03.041"W	polygon
SEC.09-T04N-R63W		103.00	-99.67	4818.24	3297065.35	1371207.10	40°20'50.870"N	104°26'03.041"W	polygon
2) WETCO FARMS 21-4-9MRLNB BHL (2156°FNL & 1945°FWL, SEC.09)	13935.14	6307.00	-7248.00	1649.05	3293981.04	1364022.11	40°19'40.237"N	104°26'43.978"W	point
1) WETCO FARMS 21-4-9MRLNB LP REV-1 (674°FNL & 2030°FWL, SEC.04)	7013.40	6307.00	-328.00	1804.07	3294054.22	1370943.16	40°20'48.618"N	104°26'41.970"W	point
SEC.04/09-T04N-R63W (460°FNL SEC.04 & 460°FSL OF 1/2 SEC.09)		6372.00	0.00	-59.93	3292186.55	1371249.08	40°20'51.860"N	104°27'06.044"W	polygon
SEC.04/09-T04N-R63W (460°FNL/FSL/FWL SEC.04 & 460°FEL/FWL/FSL OF 1/2 SEC.09)		6372.00	0.00	-59.93	3292186.55	1371249.08	40°20'51.860"N	104°27'06.044"W	polygon

SURVEY PROGRAM - Ref Wellbore: WETCO FARMS 21-4-9MRLNB PWB Ref Wellpath: WETCO FARMS 21-4-9MRLNB PWP (REV-A.0)

Start MD [ft]	End MD [ft]	Positional Uncertainty Model	Log Name/Comment	Wellbore
17.00	1550.00	BHI NaviTrak (Rotating+Axial Corr)		WETCO FARMS 21-4-9MRLNB PWB
1550.00	14206.25	BHI AutoTrak Curve (Axial Corr, Short spacing)		WETCO FARMS 21-4-9MRLNB PWB



Planned Wellpath Report

WETCO FARMS 21-4-9MRLNB PWP (REV-A.0)
Page 6 of 6



REFERENCE WELLPATH IDENTIFICATION			
Operator	BONANZA CREEK OIL COMPANY	Slot	SLOT#36 WETCO FARMS 21-4-9MRLNB (346'FNL & 232'FWL, SEC.04)
Area	COLORADO	Well	WETCO FARMS 21-4-9MRLNB
Field	WELD COUNTY	Wellbore	WETCO FARMS 21-4-9MRLNB PWB
Facility	SEC.04-T4N-R63W		

DESIGN COMMENTS				
MD [ft]	Inclination [°]	Azimuth [°]	TVD [ft]	Comment
17.00	0.000	80.963	17.00	Tie On
1650.00	0.000	80.963	1650.00	End of Tangent
2876.29	24.526	80.963	2839.18	End of Build (S)
6070.75	24.526	80.963	5745.42	End of Tangent (S)
7013.40	90.000	181.283	6307.00	End of 3D Arc (S)
13935.14	90.000	181.283	6307.00	End of Tangent