



410 17th Street, Suite 1400  
Denver, CO 80202  
(720) 440-6100 phone  
(720) 305-0804 fax

[Bonanzacrk.com](http://Bonanzacrk.com)

May 24, 2018

State of Colorado  
Oil and Gas Conservation Commission  
1120 Lincoln Street, Suite 801  
Denver, CO 80203

**RE: Proposed Wellbore Spacing Unit**  
Wetco Farms K21-4-9MRLNC  
Niobrara New Drill  
Lot 2, Section 4, Township 4N, Range 63W, 6<sup>th</sup> PM  
Weld County, Colorado

Dear Director Murphy,

Bonanza Creek Energy Operating Company, LLC. ("Bonanza Creek") is planning to drill the above captioned well in accordance with the provisions of Colorado Oil and Gas Conservation Commission (COGCC) Rule 318A.e.

Bonanza Creek's proposed wellbore spacing unit consists of:

Township 4N, Range 63W (Weld County):  
Section 4: E2W2, W2E2  
Section 9: E2NW, W2NE

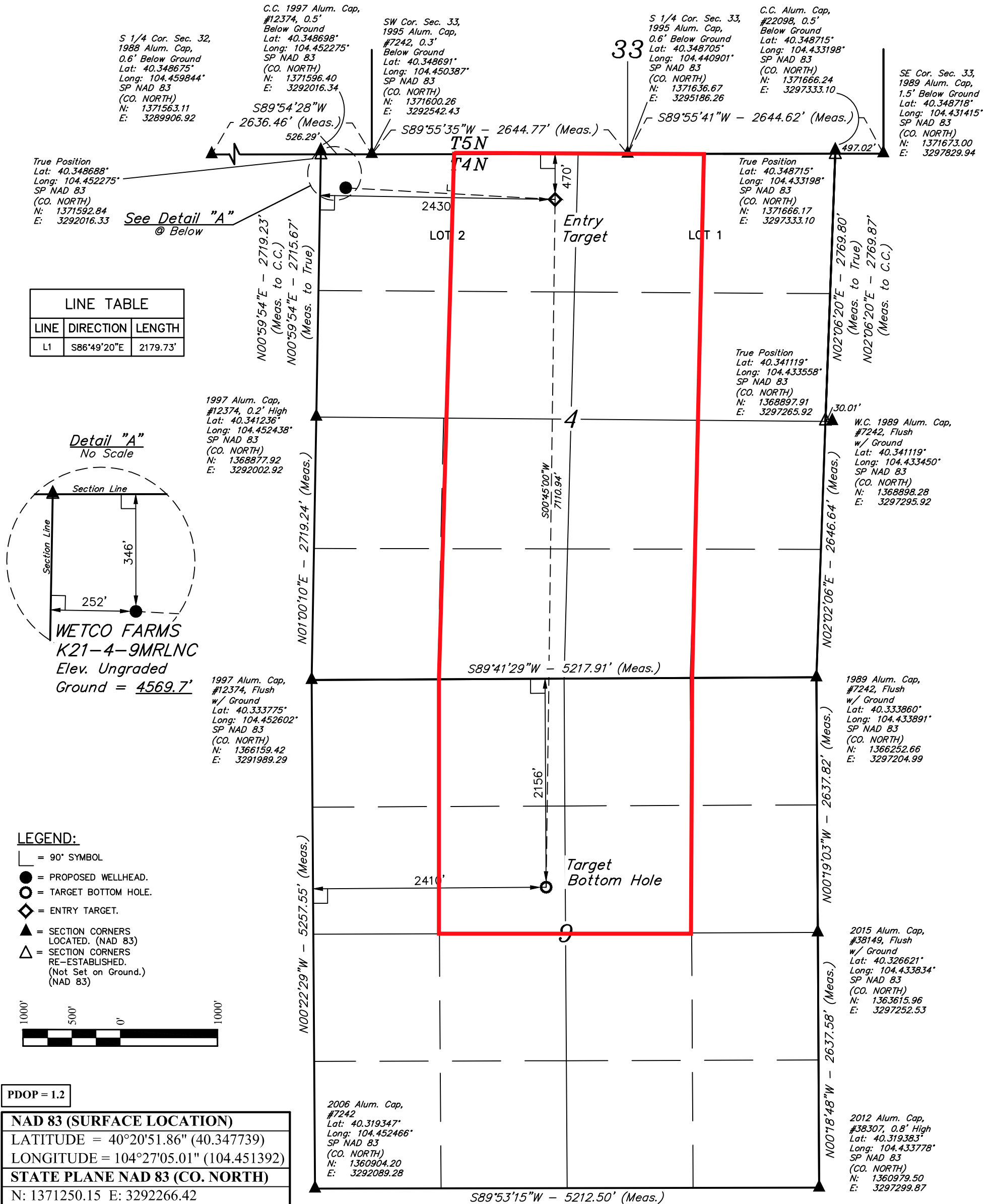
Total acres: 480ac

The 30 day notification time period has passed and we have not yet received any objections to such well locations or proposed spacing unit, therefore Bonanza Creek hereby requests the Director to approve the above mentioned well. Bonanza Creek respectfully requests the COGCC review the enclosed map illustrating the proposed wellbore spacing unit.

Regards,  
Bonanza Creek Energy Operating Company, LLC.

Brian Dodek, P.G.  
Manager – Environmental & Regulatory Compliance

T4N, R63W, 6th P.M.



NAD 83 (SURFACE LOCATION)	
LATITUDE	= 40°20'51.86" (40.347739)
LONGITUDE	= 104°27'05.01" (104.451392)
STATE PLANE NAD 83 (CO. NORTH)	
N	1371250.15 E: 3292266.42
NAD 83 (ENTRY TARGET)	
LATITUDE	= 40°20'50.68" (40.347411)
LONGITUDE	= 104°26'36.91" (104.443586)
STATE PLANE NAD 83 (CO. NORTH)	
N	1371156.52 E: 3294443.57
NAD 83 (TARGET BOTTOM HOLE)	
LATITUDE	= 40°19'40.43" (40.327897)
LONGITUDE	= 104°26'38.06" (104.443906)
STATE PLANE NAD 83 (CO. NORTH)	
N	1364047.44 E: 3294439.28

**BASIS OF BEARINGS**  
BASIS OF BEARINGS IS A G.P.S. OBSERVATION

**BASIS OF ELEVATION**  
USGS COOPERATIVE BASE NETWORK CONTROL STATION, DESIGNATION 'M414'. NGS DATA SHEET LISTS THE NAVD 88 ELEVATION AS BEING 4600.58 FEET



**UELS, LLC**  
Corporate Office \* 85 South 200 East  
Vernal, UT 84078 \* (435) 789-1017



CERTIFICATE  
THIS IS TO CERTIFY THAT THE ABOVE PLAT WAS PREPARED FROM FIELD NOTES OF ACTUAL SURVEYS MADE BY ME OR UNDER MY SUPERVISION, AND THAT THE SAME ARE TRUE AND CORRECT TO THE BEST OF MY KNOWLEDGE AND BELIEF.



REV: 1 04-03-18 D.J.W. (SHL & ET CHANGE)

**BONANZA CREEK ENERGY OPERATING COMPANY, LLC**  
**WETCO FARMS K21-4-9MRLNC**  
**LOT 2, SECTION 4, T4N, R63W, 6th P.M.**  
**WELD COUNTY, COLORADO**

SURVEYED BY	DALLAS NIELSEN	03-14-18	SCALE
DRAWN BY	L.C.S.	12-21-16	1" = 1000'

**WELL LOCATION PLAT**