

Location:	COLORADO	Slot:	SLOT#37 WETCO FARMS K21-4-9MRLNC (346"NL & 252"FWL, SEC.04)
Field:	WELD COUNTY	Well:	WETCO FARMS K21-4-9MRLNC
Facility:	SEC.04-T4N-R63W	Wellbore:	WETCO FARMS K21-4-9MRLNC PWB

Plot reference wellpath is WETCO FARMS K21-4-9MRLNC PWP (REV-A.0)	Grid System: NAD83 / Lambert Colorado SP, Northern Zone (S01), US feet
True vertical depths are referenced to RIG (17KB) (RKB)	* = Wellpath was transformed from a different geodetic datum
Measured depths are referenced to RIG (17KB) (RKB)	North Reference: True north
RIG (17KB) (RKB) to Mean Sea Level: 4587 feet	Scale: True distance
Mean Sea Level to Mud line (At Slot: SLOT#37 WETCO FARMS K21-4-9MRLNC (346NL, & 252FWL, SEC-04)): 0 feet	Depths are in feet
Coordinates are in feet referenced to Slot	Created by: adamkat on 2018-04-06
	Database: Denver

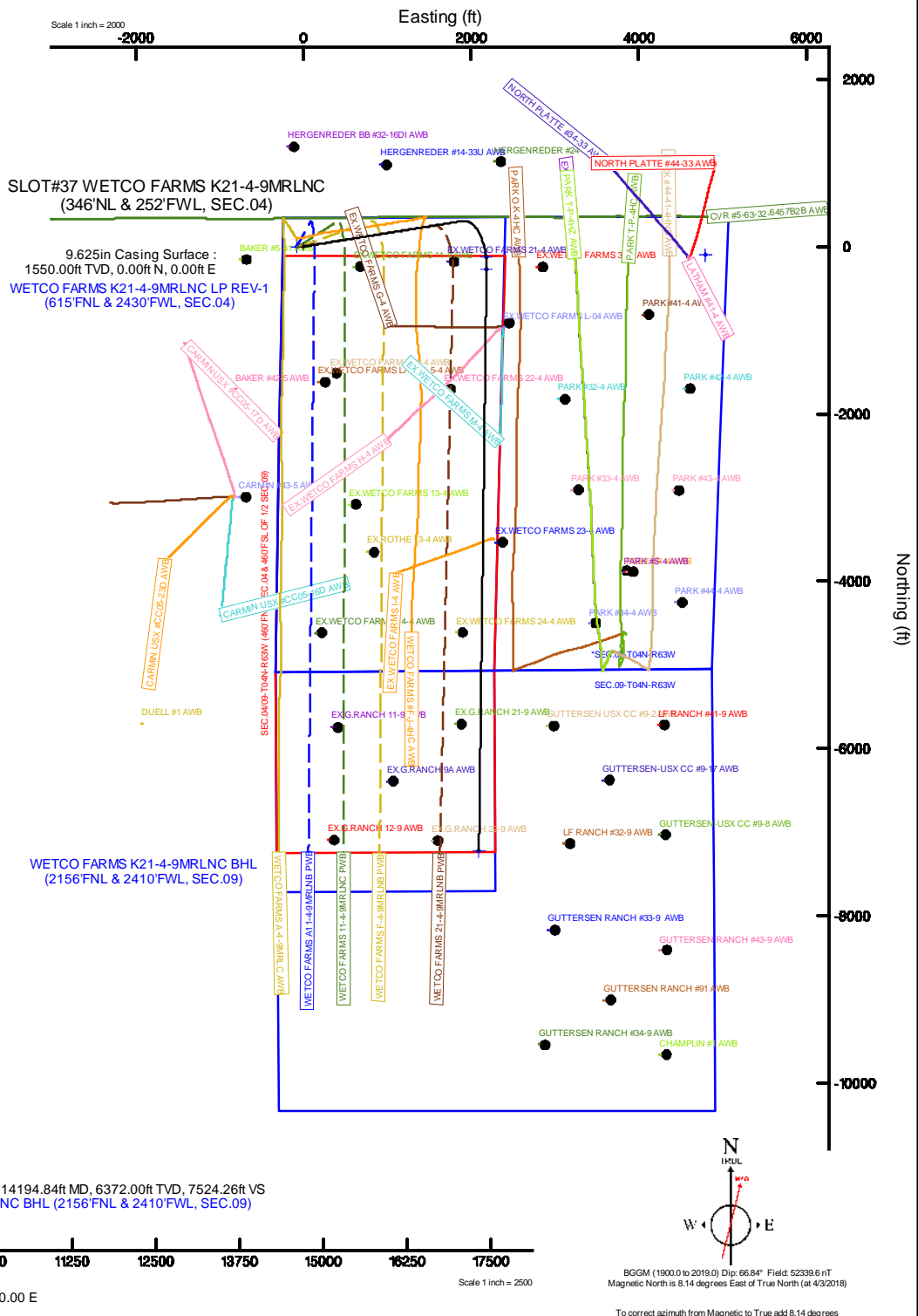
Facility Name			Grid East (US)	Grid North (US)	Latitude	Longitude
SEC 04-TAN, R63W			3292187.300	1371233.474	40°20'52.595"N	104°27'08.223"W
Site	Location (E)	Location (N)	Grid East (US)	Grid North (US)	Latitude	Longitude
SLOT#37 WETCO FARMS#21-4-SMRLINC (346N, &252FWL, SEC 04)	-74.38	78.36	3292266.627	1371230.029	40°20'51.860"N	104°27'05.011"W
R/G (1748) (R#88) to Mud line (R) Slot 37 WETCO FARMS#21-4-SMRLINC (346N, &252FWL, SEC 04)					45871	
Mean Sea Levels Mud line (AS) Slot 37 WETCO FARMS#21-4-SMRLINC (346N, &252FWL, SEC 04)					08	
R/G (1748) (R#88) to Mean Sea Level					45871	

Design Comment	MD (ft)	Inc (°)	Az (°)	TVD (ft)	Local N (ft)	Local E (ft)	DLS (°/100ft)	VS (ft)
Tie On	17.00	0.000	80.838	17.00	0.00	0.00	0.00	0.00
End of Tangent	1600.00	0.000	80.838	1600.00	0.00	0.00	0.00	0.00
End of Build (S)	3040.87	28.817	80.838	2980.89	56.49	350.25	2.00	43.22
End of Tangent (S)	6288.70	28.817	80.838	5826.50	305.76	1895.80	0.00	233.92
End of 3D Arc (S)	7236.25	90.000	180.741	6372.00	-269.00	2184.02	10.00	866.18
End of Tangent	14194.84	90.000	180.741	6372.00	-7227.01	2093.99	0.00	7524.26

Name	Start MD (ft)	End MD (ft)	Interval (ft)	Start TVD (ft)	End TVD (ft)	Start Local N (ft)	Start Local E (ft)	End Local N (ft)	End Local E (ft)	Wellbore
9.625in Casing Surface	17.00	1550.00	1533.00	17.00	1550.00	0.00	0.00	0.00	0.00	WETCO FARMS K21-4-9MLRNC PWB
8.5in Open Hole	1550.00	14194.84	12644.84	1550.00	6372.00	0.00	0.00	-7227.01	2093.99	WETCO FARMS K21-4-9MLRNC PWB

Start MD (ft)	End MD (ft)	Tool	Model	Log Name/Comment	Wellbore
17.00	1550.00	BHI NaviTrak	BHI NaviTrak (Rotating+Axial Corr)		WETCO FARMS K21-4-9MLRNC PWB
1550.00	14410.06	BHI AutoTrak Curve	BHI AutoTrak Curve (Axial Corr, Short spacing)		WETCO FARMS K21-4-9MLRNC PWB

MD (ft)	Inc (°)	Az (°)	TVD (ft)	Local N (ft)	Local E (ft)	Grid East (US ft)	Grid North (US ft)	Latitude	Longitude
14194.84	90.000	180.741	6372.00	-7227.01	2093.99	3294445.74	1364048.60	40°19'40.444"N	104°26'37.974"W





# Planned Wellpath Report

WETCO FARMS K21-4-9MRLNC PWP (REV-A.0)  
Page 1 of 7



REFERENCE WELLPATH IDENTIFICATION			
Operator	BONANZA CREEK OIL COMPANY	Slot	SLOT#37 WETCO FARMS K21-4-9MRLNC (346'NL & 252'FWL, SEC.04)
Area	COLORADO	Well	WETCO FARMS K21-4-9MRLNC
Field	WELD COUNTY	Wellbore	WETCO FARMS K21-4-9MRLNC PWB
Facility	SEC.04-T4N-R63W		

REPORT SETUP INFORMATION			
Projection System	NAD83 / Lambert Colorado SP, Northern Zone (501), US feet	Software System	WellArchitect® 5.0
North Reference	True	User	Adamkat
Scale	0.999958	Report Generated	4/6/2018 at 11:48:32 AM
Convergence at slot	0.68° East	Database/Source file	Denver\WETCO_FARMS_K21-4-9MRLNC_PWP_REV-A.0_.xml

WELLPATH LOCATION						
	Local coordinates		Grid coordinates		Geographic coordinates	
	North[ft]	East[ft]	Easting[US ft]	Northing[US ft]	Latitude	Longitude
Slot Location	-74.38	78.36	3292266.53	1371250.03	40°20'51.860"N	104°27'05.011"W
Facility Reference Pt			3292187.30	1371323.47	40°20'52.595"N	104°27'06.023"W
Field Reference Pt			3224525.77	1254425.87	40°01'44.400"N	104°41'53.556"W

WELLPATH DATUM			
Calculation method	Minimum curvature	RIG (17'KB) (RKB) to Facility Vertical Datum	4587.00ft
Horizontal Reference Pt	Slot	RIG (17'KB) (RKB) to Mean Sea Level	4587.00ft
Vertical Reference Pt	RIG (17'KB) (RKB)	RIG (17'KB) (RKB) to Mud Line at Slot (SLOT#37 WETCO FARMS K21-4-9MRLNC (346'NL & 252'FWL, SEC.04))	4587.00ft
MD Reference Pt	RIG (17'KB) (RKB)	Section Origin	N 0.00, E 0.00 ft
Field Vertical Reference	Mean Sea Level	Section Azimuth	163.84°



# Planned Wellpath Report

WETCO FARMS K21-4-9MRLNC PWP (REV-A.0)  
Page 2 of 7



## REFERENCE WELLPATH IDENTIFICATION

Operator	BONANZA CREEK OIL COMPANY	Slot	SLOT#37 WETCO FARMS K21-4-9MRLNC (346'NL & 252'FWL, SEC.04)
Area	COLORADO	Well	WETCO FARMS K21-4-9MRLNC
Field	WELD COUNTY	Wellbore	WETCO FARMS K21-4-9MRLNC PWB
Facility	SEC.04-T4N-R63W		

## WELLPATH DATA (148 stations) † = interpolated/extrapolated station

MD [ft]	Inclination [°]	Azimuth [°]	TVD [ft]	Vert Sect [ft]	North [ft]	East [ft]	Latitude	Longitude	DLS [°/100ft]	Comments
0.00†	0.000	80.838	0.00	0.00	0.00	0.00	40°20'51.860"N	104°27'05.011"W	0.00	
17.00	0.000	80.838	17.00	0.00	0.00	0.00	40°20'51.860"N	104°27'05.011"W	0.00	Tie On
117.00†	0.000	80.838	117.00	0.00	0.00	0.00	40°20'51.860"N	104°27'05.011"W	0.00	
217.00†	0.000	80.838	217.00	0.00	0.00	0.00	40°20'51.860"N	104°27'05.011"W	0.00	
317.00†	0.000	80.838	317.00	0.00	0.00	0.00	40°20'51.860"N	104°27'05.011"W	0.00	
417.00†	0.000	80.838	417.00	0.00	0.00	0.00	40°20'51.860"N	104°27'05.011"W	0.00	
517.00†	0.000	80.838	517.00	0.00	0.00	0.00	40°20'51.860"N	104°27'05.011"W	0.00	
617.00†	0.000	80.838	617.00	0.00	0.00	0.00	40°20'51.860"N	104°27'05.011"W	0.00	
717.00†	0.000	80.838	717.00	0.00	0.00	0.00	40°20'51.860"N	104°27'05.011"W	0.00	
817.00†	0.000	80.838	817.00	0.00	0.00	0.00	40°20'51.860"N	104°27'05.011"W	0.00	
917.00†	0.000	80.838	917.00	0.00	0.00	0.00	40°20'51.860"N	104°27'05.011"W	0.00	
1017.00†	0.000	80.838	1017.00	0.00	0.00	0.00	40°20'51.860"N	104°27'05.011"W	0.00	
1117.00†	0.000	80.838	1117.00	0.00	0.00	0.00	40°20'51.860"N	104°27'05.011"W	0.00	
1217.00†	0.000	80.838	1217.00	0.00	0.00	0.00	40°20'51.860"N	104°27'05.011"W	0.00	
1317.00†	0.000	80.838	1317.00	0.00	0.00	0.00	40°20'51.860"N	104°27'05.011"W	0.00	
1417.00†	0.000	80.838	1417.00	0.00	0.00	0.00	40°20'51.860"N	104°27'05.011"W	0.00	
1517.00†	0.000	80.838	1517.00	0.00	0.00	0.00	40°20'51.860"N	104°27'05.011"W	0.00	
1600.00	0.000	80.838	1600.00	0.00	0.00	0.00	40°20'51.860"N	104°27'05.011"W	0.00	End of Tangent
1617.00†	0.340	80.838	1617.00	0.01	0.01	0.05	40°20'51.860"N	104°27'05.010"W	2.00	
1717.00†	2.340	80.838	1716.97	0.29	0.38	2.36	40°20'51.864"N	104°27'04.981"W	2.00	
1817.00†	4.340	80.838	1816.79	1.00	1.31	8.11	40°20'51.873"N	104°27'04.906"W	2.00	
1917.00†	6.340	80.838	1916.35	2.13	2.79	17.30	40°20'51.888"N	104°27'04.788"W	2.00	
2017.00†	8.340	80.838	2015.53	3.69	4.82	29.91	40°20'51.908"N	104°27'04.625"W	2.00	
2117.00†	10.340	80.838	2114.20	5.67	7.41	45.93	40°20'51.933"N	104°27'04.418"W	2.00	
2217.00†	12.340	80.838	2212.24	8.06	10.54	65.34	40°20'51.964"N	104°27'04.167"W	2.00	
2317.00†	14.340	80.838	2309.54	10.87	14.21	88.12	40°20'52.000"N	104°27'03.873"W	2.00	
2417.00†	16.340	80.838	2405.97	14.10	18.42	114.24	40°20'52.042"N	104°27'03.536"W	2.00	
2517.00†	18.340	80.838	2501.42	17.73	23.17	143.66	40°20'52.089"N	104°27'03.156"W	2.00	
2617.00†	20.340	80.838	2595.77	21.76	28.44	176.35	40°20'52.141"N	104°27'02.733"W	2.00	
2717.00†	22.340	80.838	2688.91	26.19	34.24	212.27	40°20'52.198"N	104°27'02.269"W	2.00	
2817.00†	24.340	80.838	2780.72	31.02	40.54	251.39	40°20'52.261"N	104°27'01.764"W	2.00	
2917.00†	26.340	80.838	2871.10	36.23	47.36	293.64	40°20'52.328"N	104°27'01.219"W	2.00	
3017.00†	28.340	80.838	2959.92	41.82	54.67	338.98	40°20'52.400"N	104°27'00.633"W	2.00	
3040.87	28.817	80.838	2980.89	43.22	56.49	350.25	40°20'52.418"N	104°27'00.487"W	2.00	End of Build (S)
3117.00†	28.817	80.838	3047.59	47.69	62.33	386.48	40°20'52.476"N	104°27'00.019"W	0.00	
3217.00†	28.817	80.838	3135.20	53.56	70.01	434.06	40°20'52.552"N	104°26'59.405"W	0.00	
3317.00†	28.817	80.838	3222.82	59.43	77.68	481.65	40°20'52.628"N	104°26'58.790"W	0.00	
3417.00†	28.817	80.838	3310.44	65.30	85.36	529.24	40°20'52.703"N	104°26'58.176"W	0.00	
3517.00†	28.817	80.838	3398.05	71.17	93.03	576.82	40°20'52.779"N	104°26'57.561"W	0.00	
3617.00†	28.817	80.838	3485.67	77.04	100.71	624.41	40°20'52.855"N	104°26'56.946"W	0.00	
3717.00†	28.817	80.838	3573.28	82.92	108.38	672.00	40°20'52.931"N	104°26'56.332"W	0.00	
3817.00†	28.817	80.838	3660.90	88.79	116.06	719.59	40°20'53.007"N	104°26'55.717"W	0.00	
3917.00†	28.817	80.838	3748.52	94.66	123.73	767.17	40°20'53.083"N	104°26'55.103"W	0.00	
4017.00†	28.817	80.838	3836.13	100.53	131.41	814.76	40°20'53.158"N	104°26'54.488"W	0.00	
4117.00†	28.817	80.838	3923.75	106.40	139.08	862.35	40°20'53.234"N	104°26'53.873"W	0.00	



# Planned Wellpath Report

WETCO FARMS K21-4-9MRLNC PWP (REV-A.0)  
Page 3 of 7



REFERENCE WELLPATH IDENTIFICATION			
Operator	BONANZA CREEK OIL COMPANY	Slot	SLOT#37 WETCO FARMS K21-4-9MRLNC (346°NL & 252°FWL, SEC.04)
Area	COLORADO	Well	WETCO FARMS K21-4-9MRLNC
Field	WELD COUNTY	Wellbore	WETCO FARMS K21-4-9MRLNC PWB
Facility	SEC.04-T4N-R63W		

WELLPATH DATA (148 stations) † = interpolated/extrapolated station											
MD [ft]	Inclination [°]	Azimuth [°]	TVD [ft]	Vert Sect [ft]	North [ft]	East [ft]	Latitude	Longitude	DLS [°/100ft]	Comments	
4217.00†	28.817	80.838	4011.36	112.27	146.76	909.93	40°20'53.310"N	104°26'53.259"W	0.00		
4317.00†	28.817	80.838	4098.98	118.15	154.43	957.52	40°20'53.386"N	104°26'52.644"W	0.00		
4417.00†	28.817	80.838	4186.60	124.02	162.11	1005.11	40°20'53.462"N	104°26'52.030"W	0.00		
4517.00†	28.817	80.838	4274.21	129.89	169.78	1052.70	40°20'53.538"N	104°26'51.415"W	0.00		
4617.00†	28.817	80.838	4361.83	135.76	177.46	1100.28	40°20'53.613"N	104°26'50.800"W	0.00		
4717.00†	28.817	80.838	4449.44	141.63	185.13	1147.87	40°20'53.689"N	104°26'50.186"W	0.00		
4817.00†	28.817	80.838	4537.06	147.50	192.81	1195.46	40°20'53.765"N	104°26'49.571"W	0.00		
4917.00†	28.817	80.838	4624.68	153.37	200.48	1243.04	40°20'53.841"N	104°26'48.956"W	0.00		
5017.00†	28.817	80.838	4712.29	159.25	208.16	1290.63	40°20'53.917"N	104°26'48.342"W	0.00		
5117.00†	28.817	80.838	4799.91	165.12	215.83	1338.22	40°20'53.992"N	104°26'47.727"W	0.00		
5217.00†	28.817	80.838	4887.52	170.99	223.51	1385.80	40°20'54.068"N	104°26'47.113"W	0.00		
5317.00†	28.817	80.838	4975.14	176.86	231.18	1433.39	40°20'54.144"N	104°26'46.498"W	0.00		
5417.00†	28.817	80.838	5062.76	182.73	238.86	1480.98	40°20'54.220"N	104°26'45.883"W	0.00		
5517.00†	28.817	80.838	5150.37	188.60	246.53	1528.57	40°20'54.296"N	104°26'45.269"W	0.00		
5617.00†	28.817	80.838	5237.99	194.48	254.21	1576.15	40°20'54.372"N	104°26'44.654"W	0.00		
5717.00†	28.817	80.838	5325.60	200.35	261.88	1623.74	40°20'54.447"N	104°26'44.040"W	0.00		
5817.00†	28.817	80.838	5413.22	206.22	269.56	1671.33	40°20'54.523"N	104°26'43.425"W	0.00		
5917.00†	28.817	80.838	5500.84	212.09	277.23	1718.91	40°20'54.599"N	104°26'42.810"W	0.00		
6017.00†	28.817	80.838	5588.45	217.96	284.91	1766.50	40°20'54.675"N	104°26'42.196"W	0.00		
6117.00†	28.817	80.838	5676.07	223.83	292.58	1814.09	40°20'54.751"N	104°26'41.581"W	0.00		
6217.00†	28.817	80.838	5763.68	229.71	300.26	1861.68	40°20'54.826"N	104°26'40.966"W	0.00		
6288.70	28.817	80.838	5826.50	233.92	305.76	1895.80	40°20'54.881"N	104°26'40.526"W	0.00	End of Tangent (S)	
6317.00†	28.515	86.706	5851.34	236.25	307.24	1909.28	40°20'54.895"N	104°26'40.352"W	10.00		
6417.00†	29.487	107.322	5939.02	255.19	301.27	1956.72	40°20'54.836"N	104°26'39.739"W	10.00		
6517.00†	33.301	125.150	6024.55	290.28	278.07	2002.78	40°20'54.607"N	104°26'39.144"W	10.00		
6617.00†	39.128	138.966	6105.33	340.46	238.37	2046.05	40°20'54.215"N	104°26'38.585"W	10.00		
6717.00†	46.203	149.432	6178.91	404.21	183.35	2085.22	40°20'53.671"N	104°26'38.079"W	10.00		
6817.00†	54.025	157.575	6243.05	479.57	114.70	2119.09	40°20'52.993"N	104°26'37.642"W	10.00		
6917.00†	62.295	164.207	6295.80	564.28	34.50	2146.65	40°20'52.200"N	104°26'37.286"W	10.00		
7017.00†	70.835	169.885	6335.57	655.74	-54.82	2167.04	40°20'51.317"N	104°26'37.023"W	10.00		
7117.00†	79.533	174.995	6361.13	751.19	-150.54	2179.66	40°20'50.371"N	104°26'36.860"W	10.00		
7217.00†	88.307	179.824	6371.72	847.72	-249.75	2184.11	40°20'49.391"N	104°26'36.803"W	10.00		
7236.25	90.000	180.741	6372.00†	866.18	-269.00	2184.02	40°20'49.201"N	104°26'36.804"W	10.00	End of 3D Arc (S)	
7317.00†	90.000	180.741	6372.00	943.44	-349.74	2182.97	40°20'48.403"N	104°26'36.817"W	0.00		
7417.00†	90.000	180.741	6372.00	1039.12	-449.73	2181.68	40°20'47.415"N	104°26'36.834"W	0.00		
7517.00†	90.000	180.741	6372.00	1134.81	-549.72	2180.39	40°20'46.427"N	104°26'36.851"W	0.00		
7617.00†	90.000	180.741	6372.00	1230.49	-649.72	2179.09	40°20'45.439"N	104°26'36.868"W	0.00		
7717.00†	90.000	180.741	6372.00	1326.17	-749.71	2177.80	40°20'44.451"N	104°26'36.885"W	0.00		
7817.00†	90.000	180.741	6372.00	1421.85	-849.70	2176.50	40°20'43.463"N	104°26'36.902"W	0.00		
7917.00†	90.000	180.741	6372.00	1517.53	-949.69	2175.21	40°20'42.474"N	104°26'36.918"W	0.00		
8017.00†	90.000	180.741	6372.00	1613.21	-1049.68	2173.92	40°20'41.486"N	104°26'36.935"W	0.00		
8117.00†	90.000	180.741	6372.00	1708.89	-1149.67	2172.62	40°20'40.498"N	104°26'36.952"W	0.00		
8217.00†	90.000	180.741	6372.00	1804.58	-1249.67	2171.33	40°20'39.510"N	104°26'36.969"W	0.00		
8317.00†	90.000	180.741	6372.00	1900.26	-1349.66	2170.04	40°20'38.522"N	104°26'36.986"W	0.00		
8417.00†	90.000	180.741	6372.00	1995.94	-1449.65	2168.74	40°20'37.534"N	104°26'37.002"W	0.00		



# Planned Wellpath Report

WETCO FARMS K21-4-9MRLNC PWP (REV-A.0)  
Page 4 of 7



## REFERENCE WELLPATH IDENTIFICATION

Operator	BONANZA CREEK OIL COMPANY	Slot	SLOT#37 WETCO FARMS K21-4-9MRLNC (346°NL & 252°FWL, SEC.04)
Area	COLORADO	Well	WETCO FARMS K21-4-9MRLNC
Field	WELD COUNTY	Wellbore	WETCO FARMS K21-4-9MRLNC PWB
Facility	SEC.04-T4N-R63W		

## WELLPATH DATA (148 stations) † = interpolated/extrapolated station

MD [ft]	Inclination [°]	Azimuth [°]	TVD [ft]	Vert Sect [ft]	North [ft]	East [ft]	Latitude	Longitude	DLS [°/100ft]	Comments
8517.00†	90.000	180.741	6372.00	2091.62	-1549.64	2167.45	40°20'36.546"N	104°26'37.019"W	0.00	
8617.00†	90.000	180.741	6372.00	2187.30	-1649.63	2166.15	40°20'35.558"N	104°26'37.036"W	0.00	
8717.00†	90.000	180.741	6372.00	2282.98	-1749.62	2164.86	40°20'34.570"N	104°26'37.053"W	0.00	
8817.00†	90.000	180.741	6372.00	2378.66	-1849.62	2163.57	40°20'33.582"N	104°26'37.070"W	0.00	
8917.00†	90.000	180.741	6372.00	2474.35	-1949.61	2162.27	40°20'32.594"N	104°26'37.087"W	0.00	
9017.00†	90.000	180.741	6372.00	2570.03	-2049.60	2160.98	40°20'31.605"N	104°26'37.103"W	0.00	
9117.00†	90.000	180.741	6372.00	2665.71	-2149.59	2159.69	40°20'30.617"N	104°26'37.120"W	0.00	
9217.00†	90.000	180.741	6372.00	2761.39	-2249.58	2158.39	40°20'29.629"N	104°26'37.137"W	0.00	
9317.00†	90.000	180.741	6372.00	2857.07	-2349.57	2157.10	40°20'28.641"N	104°26'37.154"W	0.00	
9417.00†	90.000	180.741	6372.00	2952.75	-2449.56	2155.81	40°20'27.653"N	104°26'37.171"W	0.00	
9517.00†	90.000	180.741	6372.00	3048.43	-2549.56	2154.51	40°20'26.665"N	104°26'37.188"W	0.00	
9617.00†	90.000	180.741	6372.00	3144.12	-2649.55	2153.22	40°20'25.677"N	104°26'37.204"W	0.00	
9717.00†	90.000	180.741	6372.00	3239.80	-2749.54	2151.92	40°20'24.689"N	104°26'37.221"W	0.00	
9817.00†	90.000	180.741	6372.00	3335.48	-2849.53	2150.63	40°20'23.701"N	104°26'37.238"W	0.00	
9917.00†	90.000	180.741	6372.00	3431.16	-2949.52	2149.34	40°20'22.713"N	104°26'37.255"W	0.00	
10017.00†	90.000	180.741	6372.00	3526.84	-3049.51	2148.04	40°20'21.725"N	104°26'37.272"W	0.00	
10117.00†	90.000	180.741	6372.00	3622.52	-3149.51	2146.75	40°20'20.736"N	104°26'37.288"W	0.00	
10217.00†	90.000	180.741	6372.00	3718.20	-3249.50	2145.46	40°20'19.748"N	104°26'37.305"W	0.00	
10317.00†	90.000	180.741	6372.00	3813.88	-3349.49	2144.16	40°20'18.760"N	104°26'37.322"W	0.00	
10417.00†	90.000	180.741	6372.00	3909.57	-3449.48	2142.87	40°20'17.772"N	104°26'37.339"W	0.00	
10517.00†	90.000	180.741	6372.00	4005.25	-3549.47	2141.57	40°20'16.784"N	104°26'37.356"W	0.00	
10617.00†	90.000	180.741	6372.00	4100.93	-3649.46	2140.28	40°20'15.796"N	104°26'37.373"W	0.00	
10717.00†	90.000	180.741	6372.00	4196.61	-3749.46	2138.99	40°20'14.808"N	104°26'37.389"W	0.00	
10817.00†	90.000	180.741	6372.00	4292.29	-3849.45	2137.69	40°20'13.820"N	104°26'37.406"W	0.00	
10917.00†	90.000	180.741	6372.00	4387.97	-3949.44	2136.40	40°20'12.832"N	104°26'37.423"W	0.00	
11017.00†	90.000	180.741	6372.00	4483.65	-4049.43	2135.11	40°20'11.844"N	104°26'37.440"W	0.00	
11117.00†	90.000	180.741	6372.00	4579.34	-4149.42	2133.81	40°20'10.856"N	104°26'37.457"W	0.00	
11217.00†	90.000	180.741	6372.00	4675.02	-4249.41	2132.52	40°20'09.867"N	104°26'37.473"W	0.00	
11317.00†	90.000	180.741	6372.00	4770.70	-4349.41	2131.23	40°20'08.879"N	104°26'37.490"W	0.00	
11417.00†	90.000	180.741	6372.00	4866.38	-4449.40	2129.93	40°20'07.891"N	104°26'37.507"W	0.00	
11517.00†	90.000	180.741	6372.00	4962.06	-4549.39	2128.64	40°20'06.903"N	104°26'37.524"W	0.00	
11617.00†	90.000	180.741	6372.00	5057.74	-4649.38	2127.34	40°20'05.915"N	104°26'37.541"W	0.00	
11717.00†	90.000	180.741	6372.00	5153.42	-4749.37	2126.05	40°20'04.927"N	104°26'37.558"W	0.00	
11817.00†	90.000	180.741	6372.00	5249.11	-4849.36	2124.76	40°20'03.939"N	104°26'37.574"W	0.00	
11917.00†	90.000	180.741	6372.00	5344.79	-4949.36	2123.46	40°20'02.951"N	104°26'37.591"W	0.00	
12017.00†	90.000	180.741	6372.00	5440.47	-5049.35	2122.17	40°20'01.963"N	104°26'37.608"W	0.00	
12117.00†	90.000	180.741	6372.00	5536.15	-5149.34	2120.88	40°20'00.975"N	104°26'37.625"W	0.00	
12217.00†	90.000	180.741	6372.00	5631.83	-5249.33	2119.58	40°19'59.987"N	104°26'37.642"W	0.00	
12317.00†	90.000	180.741	6372.00	5727.51	-5349.32	2118.29	40°19'58.998"N	104°26'37.658"W	0.00	
12417.00†	90.000	180.741	6372.00	5823.19	-5449.31	2116.99	40°19'58.010"N	104°26'37.675"W	0.00	
12517.00†	90.000	180.741	6372.00	5918.87	-5549.31	2115.70	40°19'57.022"N	104°26'37.692"W	0.00	
12617.00†	90.000	180.741	6372.00	6014.56	-5649.30	2114.41	40°19'56.034"N	104°26'37.709"W	0.00	
12717.00†	90.000	180.741	6372.00	6110.24	-5749.29	2113.11	40°19'55.046"N	104°26'37.726"W	0.00	
12817.00†	90.000	180.741	6372.00	6205.92	-5849.28	2111.82	40°19'54.058"N	104°26'37.742"W	0.00	
12917.00†	90.000	180.741	6372.00	6301.60	-5949.27	2110.53	40°19'53.070"N	104°26'37.759"W	0.00	



# Planned Wellpath Report

WETCO FARMS K21-4-9MRLNC PWP (REV-A.0)  
Page 5 of 7



## REFERENCE WELLPATH IDENTIFICATION

Operator	BONANZA CREEK OIL COMPANY	Slot	SLOT#37 WETCO FARMS K21-4-9MRLNC (346°NL & 252°FWL, SEC.04)
Area	COLORADO	Well	WETCO FARMS K21-4-9MRLNC
Field	WELD COUNTY	Wellbore	WETCO FARMS K21-4-9MRLNC PWB
Facility	SEC.04-T4N-R63W		

## WELLPATH DATA (148 stations) † = interpolated/extrapolated station

MD [ft]	Inclination [°]	Azimuth [°]	TVD [ft]	Vert Sect [ft]	North [ft]	East [ft]	Latitude	Longitude	DLS [°/100ft]	Comments
13017.00†	90.000	180.741	6372.00	6397.28	-6049.26	2109.23	40°19'52.082°N	104°26'37.776°W	0.00	
13117.00†	90.000	180.741	6372.00	6492.96	-6149.26	2107.94	40°19'51.094°N	104°26'37.793°W	0.00	
13217.00†	90.000	180.741	6372.00	6588.64	-6249.25	2106.64	40°19'50.106°N	104°26'37.810°W	0.00	
13317.00†	90.000	180.741	6372.00	6684.33	-6349.24	2105.35	40°19'49.118°N	104°26'37.827°W	0.00	
13417.00†	90.000	180.741	6372.00	6780.01	-6449.23	2104.06	40°19'48.129°N	104°26'37.843°W	0.00	
13517.00†	90.000	180.741	6372.00	6875.69	-6549.22	2102.76	40°19'47.141°N	104°26'37.860°W	0.00	
13617.00†	90.000	180.741	6372.00	6971.37	-6649.21	2101.47	40°19'46.153°N	104°26'37.877°W	0.00	
13717.00†	90.000	180.741	6372.00	7067.05	-6749.21	2100.18	40°19'45.165°N	104°26'37.894°W	0.00	
13817.00†	90.000	180.741	6372.00	7162.73	-6849.20	2098.88	40°19'44.177°N	104°26'37.911°W	0.00	
13917.00†	90.000	180.741	6372.00	7258.41	-6949.19	2097.59	40°19'43.189°N	104°26'37.927°W	0.00	
14017.00†	90.000	180.741	6372.00	7354.10	-7049.18	2096.30	40°19'42.201°N	104°26'37.944°W	0.00	
14117.00†	90.000	180.741	6372.00	7449.78	-7149.17	2095.00	40°19'41.213°N	104°26'37.961°W	0.00	
14194.84	90.000	180.741	6372.00 <sup>2</sup>	7524.26	-7227.01	2093.99	40°19'40.444°N	104°26'37.974°W	0.00	End of Tangent

## HOLE & CASING SECTIONS - Ref Wellbore: WETCO FARMS K21-4-9MRLNC PWB Ref Wellpath: WETCO FARMS K21-4-9MRLNC PWP (REV-A.0)

String/Diameter	Start MD [ft]	End MD [ft]	Interval [ft]	Start TVD [ft]	End TVD [ft]	Start N/S [ft]	Start E/W [ft]	End N/S [ft]	End E/W [ft]
9.625in Casing Surface	17.00	1550.00	1533.00	17.00	1550.00	0.00	0.00	0.00	0.00
8.5in Open Hole	1550.00	14194.84	12644.84	1550.00	6372.00	0.00	0.00	-7227.01	2093.99

## TARGETS

Name	MD [ft]	TVD [ft]	North [ft]	East [ft]	Grid East [US ft]	Grid North [US ft]	Latitude	Longitude	Shape
SEC.04/09-T04N-R63W (WESTERN HALF SECTION)		0.00	0.00	-79.98	3292186.55	1371249.08	40°20'51.860°N	104°27'06.044°W	polygon
*SEC.04-T04N-R63W		103.00	-99.68	4798.19	3297065.35	1371207.10	40°20'50.870°N	104°26'03.041°W	polygon
SEC.09-T04N-R63W		103.00	-99.68	4798.19	3297065.35	1371207.10	40°20'50.870°N	104°26'03.041°W	polygon
SEC.04/09-T04N-R63W (460°FNL SEC.04 & 460°FSL OF 1/2 SEC.09)		6372.00	0.00	-79.98	3292186.55	1371249.08	40°20'51.860°N	104°27'06.044°W	polygon
2) WETCO FARMS K21-4-9MRLNC BHL (2156°FNL & 2410°FWL, SEC.09)	14194.84	6372.00	-7227.01	2093.99	3294445.74	1364048.60	40°19'40.444°N	104°26'37.974°W	point
WETCO FARMS K21-4-9MRLNC LP (470°FNL & 2430°FWL, SEC.04)		6372.00	-124.01	2184.02	3294451.76	1371151.86	40°20'50.634°N	104°26'36.804°W	point
1) WETCO FARMS K21-4-9MRLNC LP REV-1 (615°FNL & 2430°FWL, SEC.04)	7236.25	6372.00	-269.00	2184.02	3294453.48	1371006.88	40°20'49.201°N	104°26'36.804°W	point



# Planned Wellpath Report

WETCO FARMS K21-4-9MRLNC PWP (REV-A.0)  
Page 6 of 7



REFERENCE WELLPATH IDENTIFICATION			
Operator	BONANZA CREEK OIL COMPANY	Slot	SLOT#37 WETCO FARMS K21-4-9MRLNC (346'NL & 252'FWL, SEC.04)
Area	COLORADO	Well	WETCO FARMS K21-4-9MRLNC
Field	WELD COUNTY	Wellbore	WETCO FARMS K21-4-9MRLNC PWB
Facility	SEC.04-T4N-R63W		

SURVEY PROGRAM - Ref Wellbore: WETCO FARMS K21-4-9MRLNC PWB    Ref Wellpath: WETCO FARMS K21-4-9MRLNC PWP (REV-A.0)				
Start MD [ft]	End MD [ft]	Positional Uncertainty Model	Log Name/Comment	Wellbore
17.00	1550.00	BHI NaviTrak (Rotating+Axial Corr)		WETCO FARMS K21-4-9MRLNC PWB
1550.00	14410.06	BHI AutoTrak Curve (Axial Corr, Short spacing)		WETCO FARMS K21-4-9MRLNC PWB



# Planned Wellpath Report

WETCO FARMS K21-4-9MRLNC PWP (REV-A.0)  
Page 7 of 7



## REFERENCE WELLPATH IDENTIFICATION

Operator	BONANZA CREEK OIL COMPANY	Slot	SLOT#37 WETCO FARMS K21-4-9MRLNC (346'NL & 252'FWL, SEC.04)
Area	COLORADO	Well	WETCO FARMS K21-4-9MRLNC
Field	WELD COUNTY	Wellbore	WETCO FARMS K21-4-9MRLNC PWB
Facility	SEC.04-T4N-R63W		

## DESIGN COMMENTS

MD [ft]	Inclination [°]	Azimuth [°]	TVD [ft]	Comment
17.00	0.000	80.838	17.00	Tie On
1600.00	0.000	80.838	1600.00	End of Tangent
3040.87	28.817	80.838	2980.89	End of Build (S)
6288.70	28.817	80.838	5826.50	End of Tangent (S)
7236.25	90.000	180.741	6372.00	End of 3D Arc (S)
14194.84	90.000	180.741	6372.00	End of Tangent