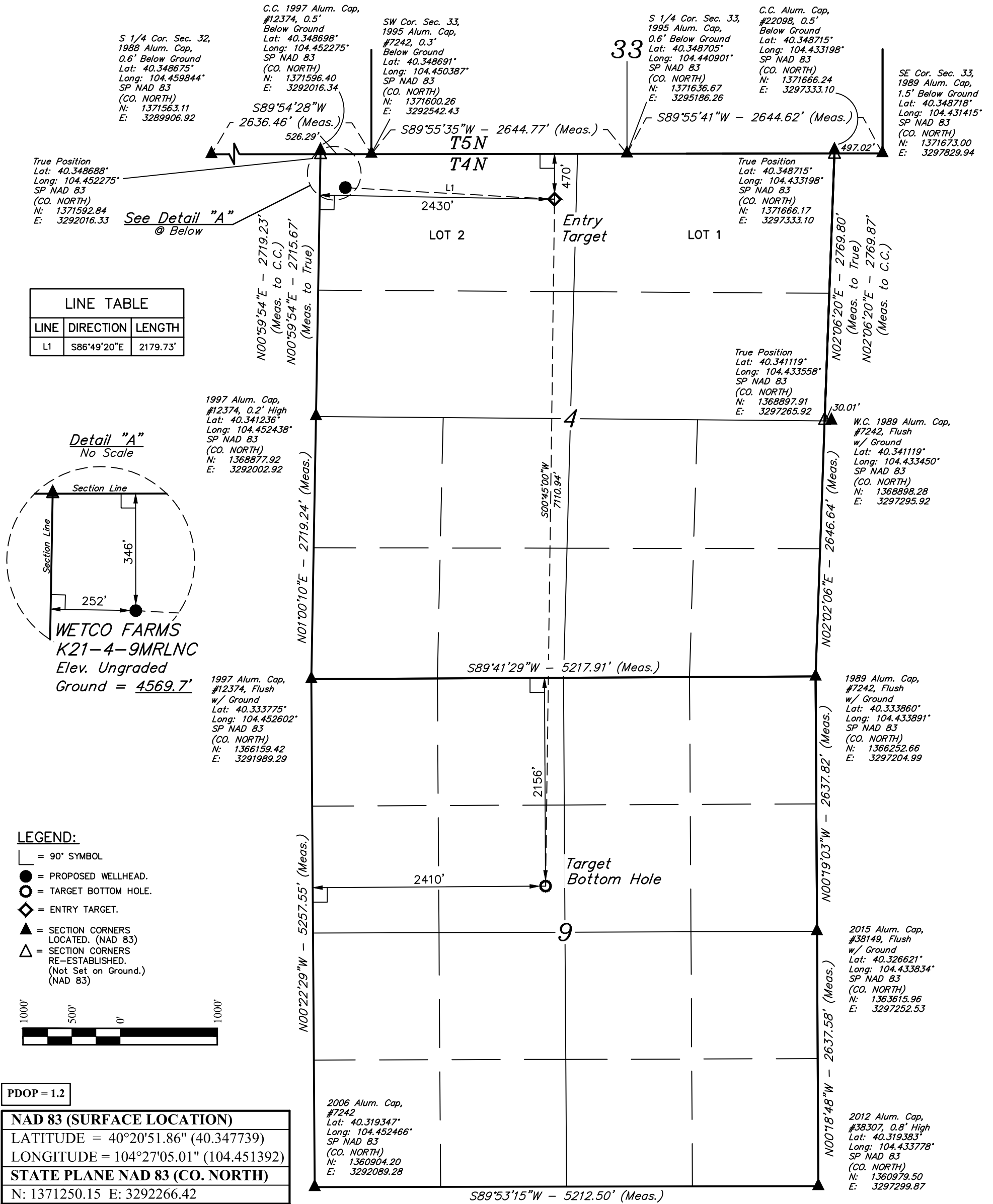


T4N, R63W, 6th P.M.



**BASIS OF BEARINGS**  
BASIS OF BEARINGS IS A G.P.S. OBSERVATION

**BASIS OF ELEVATION**  
USGS COOPERATIVE BASE NETWORK CONTROL STATION, DESIGNATION 'M414'. NGS DATA SHEET LISTS THE NAVD 88 ELEVATION AS BEING 4600.58 FEET

**UELS, LLC**  
Corporate Office \* 85 South 200 East  
Vernal, UT 84078 \* (435) 789-1017

**BONANZA CREEK ENERGY**  
**OPERATING COMPANY, LLC**  
**WETCO FARMS K21-4-9MRLNC**  
**LOT 2, SECTION 4, T4N, R63W, 6th P.M.**  
**WELD COUNTY, COLORADO**

SURVEYED BY	DALLAS NIELSEN	03-14-18	SCALE
DRAWN BY	L.C.S.	12-21-16	1" = 1000'

**WELL LOCATION PLAT**

REV: 1 04-03-18 D.J.W. (SHL & ET CHANGE)

CERTIFICATE OF SURVEY  
THIS IS TO CERTIFY THAT THE ABOVE AND WAS PREPARED FROM FIELD NOTES OF ACTUAL SURVEYS MADE BY ME OR UNDER MY SUPERVISION, AND THAT THE SAME ARE TRUE AND CORRECT TO THE BEST OF MY KNOWLEDGE AND BELIEF.

**REGISTERED LAND SURVEYOR**  
REGISTRATION NO. 28285  
STATE OF COLORADO 04-03-18