

BONANZA CREEK OIL COMPANY

Location: COLORADO Slot: SLOT#33 WETCO FARMS A11-4-9MRLNB (346°FNL & 172°FWL, SEC.04)
Field: WELD COUNTY Well: WETCO FARMS A11-4-9MRLNB
Facility: SEC.04-T4N-R63W Wellbore: WETCO FARMS A11-4-9MRLNB PWB

Plot reference wellpath is WETCO FARMS A11-4-9MRLNB PWP (REV-A.0)	Grid System: NAD83 / Lambert Colorado SP, Northern Zone (501), US feet
True vertical depths are referenced to RIG (17KB) (RKB)	* = Wellpath was transformed from a different geoidetic datum
Measured depths are referenced to RIG (17KB) (RKB)	North Reference: True north
RIG (17KB) (RKB) to Mean Sea Level: 4587 feet	Scale: True distance
Mean Sea Level to Mud line (At Slot: SLOT#33 WETCO FARMS A11-4-9MRLNB (346°FNL & 172°FWL, SEC.04): 0 feet	Depths are in feet
Coordinates are in feet referenced to Slot	Created by: adamkat on 2018-04-05
	Database: Denver

Location Information

Facility Name				Grid East (US)	Grid North (US)	Latitude	Longitude
SEC 04-T4N-R63W				3292187.300	1371323.474	40°20'52.595"N	104°27'06.623"W
Slot	Local N (ft)	Local E (ft)	Grid East (US)	Grid North (US)	Latitude	Longitude	
SLOT#33 WETCO FARMS A11-4-9MRLNB (346°FNL & 172°FWL, SEC 04)	-74.38	-1.83	3292186.554	1371249.083	40°20'51.860"N	104°27'06.644"W	
RIG (17 KB) (RKB) to Mud line (At Slot: SLOT#33 WETCO FARMS A11-4-9MRLNB (346°FNL & 172°FWL, SEC 04))						4587	
Mean Sea Level to Mud line (At Slot: SLOT#33 WETCO FARMS A11-4-9MRLNB (346°FNL & 172°FWL, SEC 04))						0	
RIG (17 KB) (RKB) to Mean Sea Level						4587	

Well Profile Data

Design Comment	MD (ft)	Inc (°)	Az (°)	TVD (ft)	Local N (ft)	Local E (ft)	DLS (°/100ft)	VS (ft)
Tie On	17.00	0.000	28.997	17.00	0.00	0.00	0.00	0.00
End of Tangent	3278.42	0.000	28.997	3278.42	0.00	0.00	0.00	0.00
End of Build (S)	3728.42	9.000	28.997	3726.57	30.85	17.10	2.00	-30.52
End of Tangent (S)	5688.03	9.000	28.997	5662.06	298.97	165.70	0.00	-295.74
End of 3D Arc (S)	6667.11	90.000	180.575	6312.00	-269.00	209.00	10.00	272.96
End of Tangent	13641.46	90.000	180.575	6312.00	-7243.00	139.00	0.00	7244.33

Hole and Casing Sections

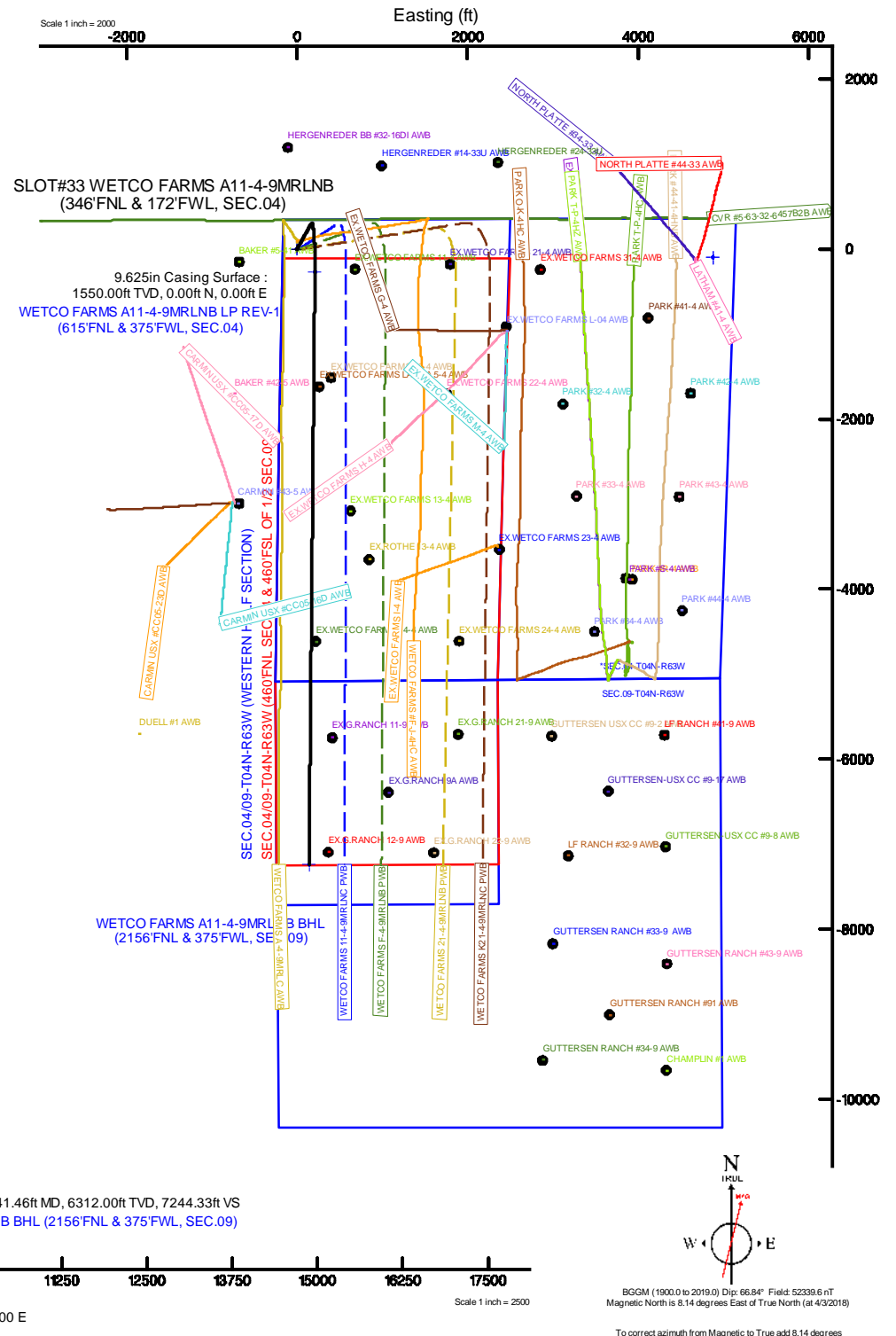
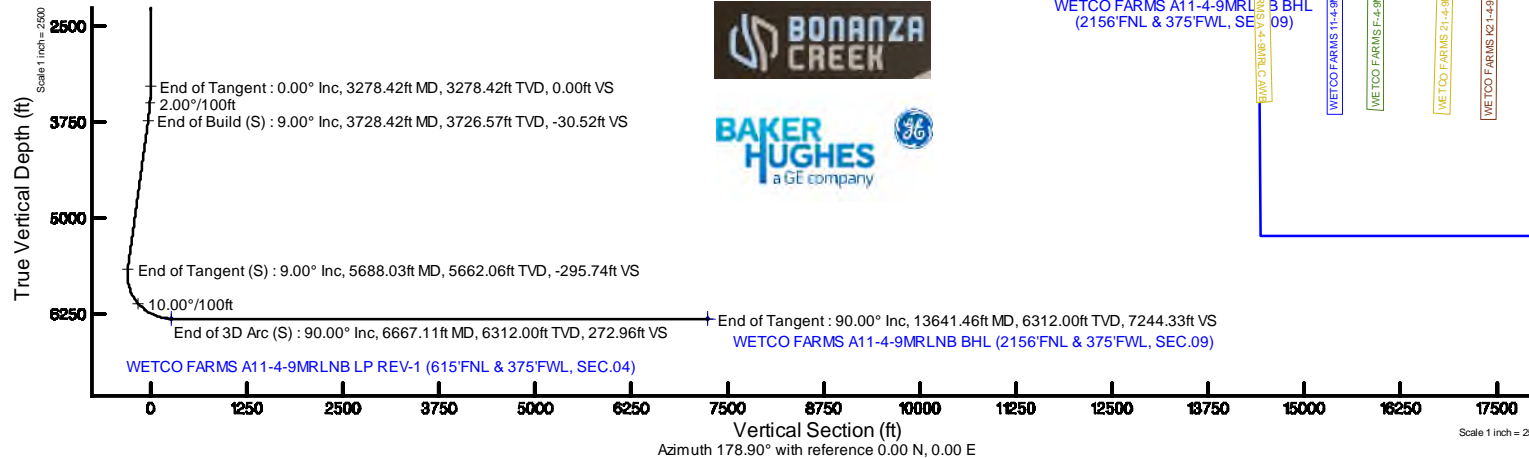
Name	Start MD (ft)	End MD (ft)	Interval (ft)	Start TVD (ft)	End TVD (ft)	Start Local N (ft)	Start Local E (ft)	End Local N (ft)	End Local E (ft)	Wellbore
9.625in Casing Surface	17.00	1550.00	1533.00	17.00	1550.00	0.00	0.00	0.00	0.00	WETCO FARMS A11-4-9MRLNB PWB
8.5in Open Hole	1550.00	13641.46	12091.46	1550.00	6312.00	0.00	0.00	-7243.00	139.00	WETCO FARMS A11-4-9MRLNB PWB

Survey Program

Start MD (ft)	End MD (ft)	Tool	Model	Log Name/Comment	Wellbore
17.00	1550.00	BHI NavTrak	BHI NavTrak (Rotating+Axial Corr)		WETCO FARMS A11-4-9MRLNB PWB
1550.00	13652.70	BHI AutoTrak Curve	BHI AutoTrak Curve (Axial Corr, Short spacing)		WETCO FARMS A11-4-9MRLNB PWB

Bottom Hole Location

MD (ft)	Inc (°)	Az (°)	TVD (ft)	Local N (ft)	Local E (ft)	Grid East (US ft)	Grid North (US ft)	Latitude	Longitude
13641.46	90.000	180.575	6312.00	-7243.00	139.00	3292411.16	1364008.55	40°19'40.287"N	104°27'04.249"W





Planned Wellpath Report

WETCO FARMS A11-4-9MRLNB PWP (REV-A.0)
Page 1 of 6



REFERENCE WELLPATH IDENTIFICATION			
Operator	BONANZA CREEK OIL COMPANY	Slot	SLOT#33 WETCO FARMS A11-4-9MRLNB (346'FNL & 172'FWL, SEC.04)
Area	COLORADO	Well	WETCO FARMS A11-4-9MRLNB
Field	WELD COUNTY	Wellbore	WETCO FARMS A11-4-9MRLNB PWB
Facility	SEC.04-T4N-R63W		

REPORT SETUP INFORMATION			
Projection System	NAD83 / Lambert Colorado SP, Northern Zone (501), US feet	Software System	WellArchitect® 5.0
North Reference	True	User	Adamkat
Scale	0.999958	Report Generated	4/5/2018 at 1:19:05 PM
Convergence at slot	0.68° East	Database/Source file	Denver\WETCO_FARMS_A11-4-9MRLNB_PWP_REV-A.0_.xml

WELLPATH LOCATION						
	Local coordinates		Grid coordinates		Geographic coordinates	
	North[ft]	East[ft]	Easting[US ft]	Northing[US ft]	Latitude	Longitude
Slot Location	-74.38	-1.63	3292186.55	1371249.08	40°20'51.860"N	104°27'06.044"W
Facility Reference Pt			3292187.30	1371323.47	40°20'52.595"N	104°27'06.023"W
Field Reference Pt			3224525.77	1254425.87	40°01'44.400"N	104°41'53.556"W

WELLPATH DATUM			
Calculation method	Minimum curvature	RIG (17'KB) (RKB) to Facility Vertical Datum	4587.00ft
Horizontal Reference Pt	Slot	RIG (17'KB) (RKB) to Mean Sea Level	4587.00ft
Vertical Reference Pt	RIG (17'KB) (RKB)	RIG (17'KB) (RKB) to Mud Line at Slot (SLOT#33 WETCO FARMS A11-4-9MRLNB (346'FNL & 172'FWL, SEC.04))	4587.00ft
MD Reference Pt	RIG (17'KB) (RKB)	Section Origin	N 0.00, E 0.00 ft
Field Vertical Reference	Mean Sea Level	Section Azimuth	178.90°



Planned Wellpath Report

WETCO FARMS A11-4-9MRLNB PWP (REV-A.0)
Page 2 of 6



REFERENCE WELLPATH IDENTIFICATION

Operator	BONANZA CREEK OIL COMPANY	Slot	SLOT#33 WETCO FARMS A11-4-9MRLNB (346'FNL & 172'FWL, SEC.04)
Area	COLORADO	Well	WETCO FARMS A11-4-9MRLNB
Field	WELD COUNTY	Wellbore	WETCO FARMS A11-4-9MRLNB PWB
Facility	SEC.04-T4N-R63W		

WELLPATH DATA (143 stations) † = interpolated/extrapolated station

MD [ft]	Inclination [°]	Azimuth [°]	TVD [ft]	Vert Sect [ft]	North [ft]	East [ft]	Latitude	Longitude	DLS [°/100ft]	Comments
0.00†	0.000	28.997	0.00	0.00	0.00	0.00	40°20'51.860"N	104°27'06.044"W	0.00	
17.00	0.000	28.997	17.00	0.00	0.00	0.00	40°20'51.860"N	104°27'06.044"W	0.00	Tie On
117.00†	0.000	28.997	117.00	0.00	0.00	0.00	40°20'51.860"N	104°27'06.044"W	0.00	
217.00†	0.000	28.997	217.00	0.00	0.00	0.00	40°20'51.860"N	104°27'06.044"W	0.00	
317.00†	0.000	28.997	317.00	0.00	0.00	0.00	40°20'51.860"N	104°27'06.044"W	0.00	
417.00†	0.000	28.997	417.00	0.00	0.00	0.00	40°20'51.860"N	104°27'06.044"W	0.00	
517.00†	0.000	28.997	517.00	0.00	0.00	0.00	40°20'51.860"N	104°27'06.044"W	0.00	
617.00†	0.000	28.997	617.00	0.00	0.00	0.00	40°20'51.860"N	104°27'06.044"W	0.00	
717.00†	0.000	28.997	717.00	0.00	0.00	0.00	40°20'51.860"N	104°27'06.044"W	0.00	
817.00†	0.000	28.997	817.00	0.00	0.00	0.00	40°20'51.860"N	104°27'06.044"W	0.00	
917.00†	0.000	28.997	917.00	0.00	0.00	0.00	40°20'51.860"N	104°27'06.044"W	0.00	
1017.00†	0.000	28.997	1017.00	0.00	0.00	0.00	40°20'51.860"N	104°27'06.044"W	0.00	
1117.00†	0.000	28.997	1117.00	0.00	0.00	0.00	40°20'51.860"N	104°27'06.044"W	0.00	
1217.00†	0.000	28.997	1217.00	0.00	0.00	0.00	40°20'51.860"N	104°27'06.044"W	0.00	
1317.00†	0.000	28.997	1317.00	0.00	0.00	0.00	40°20'51.860"N	104°27'06.044"W	0.00	
1417.00†	0.000	28.997	1417.00	0.00	0.00	0.00	40°20'51.860"N	104°27'06.044"W	0.00	
1517.00†	0.000	28.997	1517.00	0.00	0.00	0.00	40°20'51.860"N	104°27'06.044"W	0.00	
1617.00†	0.000	28.997	1617.00	0.00	0.00	0.00	40°20'51.860"N	104°27'06.044"W	0.00	
1717.00†	0.000	28.997	1717.00	0.00	0.00	0.00	40°20'51.860"N	104°27'06.044"W	0.00	
1817.00†	0.000	28.997	1817.00	0.00	0.00	0.00	40°20'51.860"N	104°27'06.044"W	0.00	
1917.00†	0.000	28.997	1917.00	0.00	0.00	0.00	40°20'51.860"N	104°27'06.044"W	0.00	
2017.00†	0.000	28.997	2017.00	0.00	0.00	0.00	40°20'51.860"N	104°27'06.044"W	0.00	
2117.00†	0.000	28.997	2117.00	0.00	0.00	0.00	40°20'51.860"N	104°27'06.044"W	0.00	
2217.00†	0.000	28.997	2217.00	0.00	0.00	0.00	40°20'51.860"N	104°27'06.044"W	0.00	
2317.00†	0.000	28.997	2317.00	0.00	0.00	0.00	40°20'51.860"N	104°27'06.044"W	0.00	
2417.00†	0.000	28.997	2417.00	0.00	0.00	0.00	40°20'51.860"N	104°27'06.044"W	0.00	
2517.00†	0.000	28.997	2517.00	0.00	0.00	0.00	40°20'51.860"N	104°27'06.044"W	0.00	
2617.00†	0.000	28.997	2617.00	0.00	0.00	0.00	40°20'51.860"N	104°27'06.044"W	0.00	
2717.00†	0.000	28.997	2717.00	0.00	0.00	0.00	40°20'51.860"N	104°27'06.044"W	0.00	
2817.00†	0.000	28.997	2817.00	0.00	0.00	0.00	40°20'51.860"N	104°27'06.044"W	0.00	
2917.00†	0.000	28.997	2917.00	0.00	0.00	0.00	40°20'51.860"N	104°27'06.044"W	0.00	
3017.00†	0.000	28.997	3017.00	0.00	0.00	0.00	40°20'51.860"N	104°27'06.044"W	0.00	
3117.00†	0.000	28.997	3117.00	0.00	0.00	0.00	40°20'51.860"N	104°27'06.044"W	0.00	
3217.00†	0.000	28.997	3217.00	0.00	0.00	0.00	40°20'51.860"N	104°27'06.044"W	0.00	
3278.42	0.000	28.997	3278.42	0.00	0.00	0.00	40°20'51.860"N	104°27'06.044"W	0.00	End of Tangent
3317.00†	0.772	28.997	3317.00	-0.22	0.23	0.13	40°20'51.862"N	104°27'06.042"W	2.00	
3417.00†	2.772	28.997	3416.95	-2.90	2.93	1.62	40°20'51.889"N	104°27'06.023"W	2.00	
3517.00†	4.772	28.997	3516.72	-8.59	8.68	4.81	40°20'51.946"N	104°27'05.982"W	2.00	
3617.00†	6.772	28.997	3616.21	-17.29	17.48	9.69	40°20'52.033"N	104°27'05.919"W	2.00	
3717.00†	8.772	28.997	3715.29	-28.99	29.31	16.24	40°20'52.150"N	104°27'05.834"W	2.00	
3728.42	9.000	28.997	3726.57	-30.52	30.85	17.10	40°20'52.165"N	104°27'05.823"W	2.00	End of Build (S)
3817.00†	9.000	28.997	3814.06	-42.50	42.97	23.82	40°20'52.285"N	104°27'05.736"W	0.00	
3917.00†	9.000	28.997	3912.83	-56.04	56.65	31.40	40°20'52.420"N	104°27'05.638"W	0.00	
4017.00†	9.000	28.997	4011.60	-69.57	70.33	38.98	40°20'52.555"N	104°27'05.541"W	0.00	
4117.00†	9.000	28.997	4110.37	-83.11	84.02	46.57	40°20'52.690"N	104°27'05.443"W	0.00	



Planned Wellpath Report

WETCO FARMS A11-4-9MRLNB PWP (REV-A.0)
Page 3 of 6



REFERENCE WELLPATH IDENTIFICATION

Operator	BONANZA CREEK OIL COMPANY	Slot	SLOT#33 WETCO FARMS A11-4-9MRLNB (346'FNL & 172'FWL, SEC.04)
Area	COLORADO	Well	WETCO FARMS A11-4-9MRLNB
Field	WELD COUNTY	Wellbore	WETCO FARMS A11-4-9MRLNB PWB
Facility	SEC.04-T4N-R63W		

WELLPATH DATA (143 stations) † = interpolated/extrapolated station

MD [ft]	Inclination [°]	Azimuth [°]	TVD [ft]	Vert Sect [ft]	North [ft]	East [ft]	Latitude	Longitude	DLS [°/100ft]	Comments
4217.00†	9.000	28.997	4209.14	-96.64	97.70	54.15	40°20'52.825"N	104°27'05.345"W	0.00	
4317.00†	9.000	28.997	4307.91	-110.18	111.38	61.73	40°20'52.961"N	104°27'05.247"W	0.00	
4417.00†	9.000	28.997	4406.67	-123.71	125.06	69.32	40°20'53.096"N	104°27'05.149"W	0.00	
4517.00†	9.000	28.997	4505.44	-137.25	138.75	76.90	40°20'53.231"N	104°27'05.051"W	0.00	
4617.00†	9.000	28.997	4604.21	-150.78	152.43	84.48	40°20'53.366"N	104°27'04.953"W	0.00	
4717.00†	9.000	28.997	4702.98	-164.31	166.11	92.07	40°20'53.501"N	104°27'04.855"W	0.00	
4817.00†	9.000	28.997	4801.75	-177.85	179.79	99.65	40°20'53.637"N	104°27'04.757"W	0.00	
4917.00†	9.000	28.997	4900.52	-191.38	193.48	107.23	40°20'53.772"N	104°27'04.659"W	0.00	
5017.00†	9.000	28.997	4999.29	-204.92	207.16	114.82	40°20'53.907"N	104°27'04.561"W	0.00	
5117.00†	9.000	28.997	5098.06	-218.45	220.84	122.40	40°20'54.042"N	104°27'04.463"W	0.00	
5217.00†	9.000	28.997	5196.82	-231.99	234.52	129.98	40°20'54.177"N	104°27'04.365"W	0.00	
5317.00†	9.000	28.997	5295.59	-245.52	248.21	137.57	40°20'54.313"N	104°27'04.267"W	0.00	
5417.00†	9.000	28.997	5394.36	-259.06	261.89	145.15	40°20'54.448"N	104°27'04.169"W	0.00	
5517.00†	9.000	28.997	5493.13	-272.59	275.57	152.73	40°20'54.583"N	104°27'04.071"W	0.00	
5617.00†	9.000	28.997	5591.90	-286.12	289.25	160.32	40°20'54.718"N	104°27'03.973"W	0.00	
5688.03	9.000	28.997	5662.06	-295.74	298.97	165.70	40°20'54.814"N	104°27'03.904"W	0.00	End of Tangent (S)
5717.00†	6.607	41.181	5690.76	-298.93	302.21	167.90	40°20'54.846"N	104°27'03.875"W	10.00	
5817.00†	6.590	139.842	5790.35	-298.73	302.15	175.41	40°20'54.846"N	104°27'03.779"W	10.00	
5917.00†	15.583	164.892	5888.43	-281.20	284.76	182.63	40°20'54.674"N	104°27'03.685"W	10.00	
6017.00†	25.334	171.413	5982.02	-246.87	250.55	189.34	40°20'54.336"N	104°27'03.599"W	10.00	
6117.00†	35.220	174.445	6068.28	-196.78	200.56	195.34	40°20'53.842"N	104°27'03.521"W	10.00	
6217.00†	45.151	176.274	6144.58	-132.46	136.33	200.45	40°20'53.207"N	104°27'03.455"W	10.00	
6317.00†	55.102	177.561	6208.61	-55.85	59.79	204.51	40°20'52.451"N	104°27'03.403"W	10.00	
6417.00†	65.064	178.566	6258.42	30.70	-26.73	207.39	40°20'51.596"N	104°27'03.365"W	10.00	
6517.00†	75.032	179.420	6292.50	124.58	-120.59	209.02	40°20'50.668"N	104°27'03.344"W	10.00	
6617.00†	85.003	180.197	6309.82	222.93	-218.95	209.34	40°20'49.696"N	104°27'03.340"W	10.00	
6667.11	90.000	180.575	6312.00†	272.96	-269.00	209.00	40°20'49.202"N	104°27'03.345"W	10.00	End of 3D Arc (S)
6717.00†	90.000	180.575	6312.00	322.83	-318.89	208.50	40°20'48.709"N	104°27'03.351"W	0.00	
6817.00†	90.000	180.575	6312.00	422.79	-418.88	207.50	40°20'47.721"N	104°27'03.364"W	0.00	
6917.00†	90.000	180.575	6312.00	522.74	-518.88	206.49	40°20'46.733"N	104°27'03.377"W	0.00	
7017.00†	90.000	180.575	6312.00	622.70	-618.87	205.49	40°20'45.744"N	104°27'03.390"W	0.00	
7117.00†	90.000	180.575	6312.00	722.66	-718.87	204.48	40°20'44.756"N	104°27'03.403"W	0.00	
7217.00†	90.000	180.575	6312.00	822.61	-818.86	203.48	40°20'43.768"N	104°27'03.416"W	0.00	
7317.00†	90.000	180.575	6312.00	922.57	-918.86	202.48	40°20'42.780"N	104°27'03.429"W	0.00	
7417.00†	90.000	180.575	6312.00	1022.53	-1018.85	201.47	40°20'41.792"N	104°27'03.442"W	0.00	
7517.00†	90.000	180.575	6312.00	1122.49	-1118.85	200.47	40°20'40.804"N	104°27'03.455"W	0.00	
7617.00†	90.000	180.575	6312.00	1222.44	-1218.84	199.47	40°20'39.816"N	104°27'03.468"W	0.00	
7717.00†	90.000	180.575	6312.00	1322.40	-1318.84	198.46	40°20'38.828"N	104°27'03.481"W	0.00	
7817.00†	90.000	180.575	6312.00	1422.36	-1418.83	197.46	40°20'37.839"N	104°27'03.494"W	0.00	
7917.00†	90.000	180.575	6312.00	1522.32	-1518.83	196.46	40°20'36.851"N	104°27'03.507"W	0.00	
8017.00†	90.000	180.575	6312.00	1622.27	-1618.82	195.45	40°20'35.863"N	104°27'03.520"W	0.00	
8117.00†	90.000	180.575	6312.00	1722.23	-1718.82	194.45	40°20'34.875"N	104°27'03.533"W	0.00	
8217.00†	90.000	180.575	6312.00	1822.19	-1818.81	193.44	40°20'33.887"N	104°27'03.546"W	0.00	
8317.00†	90.000	180.575	6312.00	1922.14	-1918.81	192.44	40°20'32.899"N	104°27'03.559"W	0.00	
8417.00†	90.000	180.575	6312.00	2022.10	-2018.80	191.44	40°20'31.911"N	104°27'03.572"W	0.00	



Planned Wellpath Report

WETCO FARMS A11-4-9MRLNB PWP (REV-A.0)
Page 4 of 6



REFERENCE WELLPATH IDENTIFICATION

Operator	BONANZA CREEK OIL COMPANY	Slot	SLOT#33 WETCO FARMS A11-4-9MRLNB (346'FNL & 172'FWL, SEC.04)
Area	COLORADO	Well	WETCO FARMS A11-4-9MRLNB
Field	WELD COUNTY	Wellbore	WETCO FARMS A11-4-9MRLNB PWB
Facility	SEC.04-T4N-R63W		

WELLPATH DATA (143 stations) † = interpolated/extrapolated station

MD [ft]	Inclination [°]	Azimuth [°]	TVD [ft]	Vert Sect [ft]	North [ft]	East [ft]	Latitude	Longitude	DLS [°/100ft]	Comments
8517.00†	90.000	180.575	6312.00	2122.06	-2118.80	190.43	40°20'30.923"N	104°27'03.585"W	0.00	
8617.00†	90.000	180.575	6312.00	2222.02	-2218.79	189.43	40°20'29.935"N	104°27'03.598"W	0.00	
8717.00†	90.000	180.575	6312.00	2321.97	-2318.79	188.43	40°20'28.946"N	104°27'03.611"W	0.00	
8817.00†	90.000	180.575	6312.00	2421.93	-2418.78	187.42	40°20'27.958"N	104°27'03.624"W	0.00	
8917.00†	90.000	180.575	6312.00	2521.89	-2518.78	186.42	40°20'26.970"N	104°27'03.637"W	0.00	
9017.00†	90.000	180.575	6312.00	2621.85	-2618.77	185.41	40°20'25.982"N	104°27'03.650"W	0.00	
9117.00†	90.000	180.575	6312.00	2721.80	-2718.77	184.41	40°20'24.994"N	104°27'03.663"W	0.00	
9217.00†	90.000	180.575	6312.00	2821.76	-2818.76	183.41	40°20'24.006"N	104°27'03.675"W	0.00	
9317.00†	90.000	180.575	6312.00	2921.72	-2918.75	182.40	40°20'23.018"N	104°27'03.688"W	0.00	
9417.00†	90.000	180.575	6312.00	3021.67	-3018.75	181.40	40°20'22.030"N	104°27'03.701"W	0.00	
9517.00†	90.000	180.575	6312.00	3121.63	-3118.74	180.40	40°20'21.041"N	104°27'03.714"W	0.00	
9617.00†	90.000	180.575	6312.00	3221.59	-3218.74	179.39	40°20'20.053"N	104°27'03.727"W	0.00	
9717.00†	90.000	180.575	6312.00	3321.55	-3318.73	178.39	40°20'19.065"N	104°27'03.740"W	0.00	
9817.00†	90.000	180.575	6312.00	3421.50	-3418.73	177.39	40°20'18.077"N	104°27'03.753"W	0.00	
9917.00†	90.000	180.575	6312.00	3521.46	-3518.72	176.38	40°20'17.089"N	104°27'03.766"W	0.00	
10017.00†	90.000	180.575	6312.00	3621.42	-3618.72	175.38	40°20'16.101"N	104°27'03.779"W	0.00	
10117.00†	90.000	180.575	6312.00	3721.38	-3718.71	174.37	40°20'15.113"N	104°27'03.792"W	0.00	
10217.00†	90.000	180.575	6312.00	3821.33	-3818.71	173.37	40°20'14.125"N	104°27'03.805"W	0.00	
10317.00†	90.000	180.575	6312.00	3921.29	-3918.70	172.37	40°20'13.136"N	104°27'03.818"W	0.00	
10417.00†	90.000	180.575	6312.00	4021.25	-4018.70	171.36	40°20'12.148"N	104°27'03.831"W	0.00	
10517.00†	90.000	180.575	6312.00	4121.21	-4118.69	170.36	40°20'11.160"N	104°27'03.844"W	0.00	
10617.00†	90.000	180.575	6312.00	4221.16	-4218.69	169.36	40°20'10.172"N	104°27'03.857"W	0.00	
10717.00†	90.000	180.575	6312.00	4321.12	-4318.68	168.35	40°20'09.184"N	104°27'03.870"W	0.00	
10817.00†	90.000	180.575	6312.00	4421.08	-4418.68	167.35	40°20'08.196"N	104°27'03.883"W	0.00	
10917.00†	90.000	180.575	6312.00	4521.03	-4518.67	166.34	40°20'07.208"N	104°27'03.896"W	0.00	
11017.00†	90.000	180.575	6312.00	4620.99	-4618.67	165.34	40°20'06.220"N	104°27'03.909"W	0.00	
11117.00†	90.000	180.575	6312.00	4720.95	-4718.66	164.34	40°20'05.231"N	104°27'03.922"W	0.00	
11217.00†	90.000	180.575	6312.00	4820.91	-4818.66	163.33	40°20'04.243"N	104°27'03.935"W	0.00	
11317.00†	90.000	180.575	6312.00	4920.86	-4918.65	162.33	40°20'03.255"N	104°27'03.948"W	0.00	
11417.00†	90.000	180.575	6312.00	5020.82	-5018.65	161.33	40°20'02.267"N	104°27'03.961"W	0.00	
11517.00†	90.000	180.575	6312.00	5120.78	-5118.64	160.32	40°20'01.279"N	104°27'03.974"W	0.00	
11617.00†	90.000	180.575	6312.00	5220.74	-5218.64	159.32	40°20'00.291"N	104°27'03.987"W	0.00	
11717.00†	90.000	180.575	6312.00	5320.69	-5318.63	158.32	40°19'59.303"N	104°27'04.000"W	0.00	
11817.00†	90.000	180.575	6312.00	5420.65	-5418.63	157.31	40°19'58.315"N	104°27'04.013"W	0.00	
11917.00†	90.000	180.575	6312.00	5520.61	-5518.62	156.31	40°19'57.326"N	104°27'04.026"W	0.00	
12017.00†	90.000	180.575	6312.00	5620.56	-5618.62	155.30	40°19'56.338"N	104°27'04.039"W	0.00	
12117.00†	90.000	180.575	6312.00	5720.52	-5718.61	154.30	40°19'55.350"N	104°27'04.052"W	0.00	
12217.00†	90.000	180.575	6312.00	5820.48	-5818.61	153.30	40°19'54.362"N	104°27'04.065"W	0.00	
12317.00†	90.000	180.575	6312.00	5920.44	-5918.60	152.29	40°19'53.374"N	104°27'04.078"W	0.00	
12417.00†	90.000	180.575	6312.00	6020.39	-6018.60	151.29	40°19'52.386"N	104°27'04.091"W	0.00	
12517.00†	90.000	180.575	6312.00	6120.35	-6118.59	150.29	40°19'51.398"N	104°27'04.103"W	0.00	
12617.00†	90.000	180.575	6312.00	6220.31	-6218.59	149.28	40°19'50.409"N	104°27'04.116"W	0.00	
12717.00†	90.000	180.575	6312.00	6320.27	-6318.58	148.28	40°19'49.421"N	104°27'04.129"W	0.00	
12817.00†	90.000	180.575	6312.00	6420.22	-6418.58	147.27	40°19'48.433"N	104°27'04.142"W	0.00	
12917.00†	90.000	180.575	6312.00	6520.18	-6518.57	146.27	40°19'47.445"N	104°27'04.155"W	0.00	



Planned Wellpath Report

WETCO FARMS A11-4-9MRLNB PWP (REV-A.0)
Page 5 of 6



REFERENCE WELLPATH IDENTIFICATION

Operator	BONANZA CREEK OIL COMPANY	Slot	SLOT#33 WETCO FARMS A11-4-9MRLNB (346°FNL & 172°FWL, SEC.04)
Area	COLORADO	Well	WETCO FARMS A11-4-9MRLNB
Field	WELD COUNTY	Wellbore	WETCO FARMS A11-4-9MRLNB PWB
Facility	SEC.04-T4N-R63W		

WELLPATH DATA (143 stations) † = interpolated/extrapolated station

MD [ft]	Inclination [°]	Azimuth [°]	TVD [ft]	Vert Sect [ft]	North [ft]	East [ft]	Latitude	Longitude	DLS [°/100ft]	Comments
13017.00†	90.000	180.575	6312.00	6620.14	-6618.57	145.27	40°19'46.457"N	104°27'04.168"W	0.00	
13117.00†	90.000	180.575	6312.00	6720.09	-6718.56	144.26	40°19'45.469"N	104°27'04.181"W	0.00	
13217.00†	90.000	180.575	6312.00	6820.05	-6818.56	143.26	40°19'44.481"N	104°27'04.194"W	0.00	
13317.00†	90.000	180.575	6312.00	6920.01	-6918.55	142.26	40°19'43.493"N	104°27'04.207"W	0.00	
13417.00†	90.000	180.575	6312.00	7019.97	-7018.55	141.25	40°19'42.504"N	104°27'04.220"W	0.00	
13517.00†	90.000	180.575	6312.00	7119.92	-7118.54	140.25	40°19'41.516"N	104°27'04.233"W	0.00	
13617.00†	90.000	180.575	6312.00	7219.88	-7218.54	139.25	40°19'40.528"N	104°27'04.246"W	0.00	
13641.46	90.000	180.575	6312.00	7244.33	-7243.00	139.00	40°19'40.287"N	104°27'04.249"W	0.00	End of Tangent

HOLE & CASING SECTIONS - Ref Wellbore: WETCO FARMS A11-4-9MRLNB PWB Ref Wellpath: WETCO FARMS A11-4-9MRLNB PWP (REV-A.0)

String/Diameter	Start MD [ft]	End MD [ft]	Interval [ft]	Start TVD [ft]	End TVD [ft]	Start N/S [ft]	Start E/W [ft]	End N/S [ft]	End E/W [ft]
9.625in Casing Surface	17.00	1550.00	1533.00	17.00	1550.00	0.00	0.00	0.00	0.00
8.5in Open Hole	1550.00	13641.46	12091.46	1550.00	6312.00	0.00	0.00	-7243.00	139.00

TARGETS

Name	MD [ft]	TVD [ft]	North [ft]	East [ft]	Grid East [US ft]	Grid North [US ft]	Latitude	Longitude	Shape
SEC.04/09-T04N-R63W (WESTERN HALF SECTION)		0.00	0.00	0.00	3292186.55	1371249.08	40°20'51.860"N	104°27'06.044"W	polygon
*SEC.04-T04N-R63W		103.00	-99.66	4878.17	3297065.35	1371207.10	40°20'50.870"N	104°26'03.041"W	polygon
SEC.09-T04N-R63W		103.00	-99.66	4878.17	3297065.35	1371207.10	40°20'50.870"N	104°26'03.041"W	polygon
2) WETCO FARMS A11-4-9MRLNB BHL (2156°FNL & 375°FWL, SEC.09)	13641.46	6312.00	-7243.00	139.00	3292411.16	1364008.55	40°19'40.287"N	104°27'04.249"W	point
1) WETCO FARMS A11-4-9MRLNB LP REV-1 (615°FNL & 375°FWL, SEC.04)	6667.11	6312.00	-269.00	209.00	3292398.71	1370982.58	40°20'49.202"N	104°27'03.345"W	point
SEC.04/09-T04N-R63W (460°FNL SEC.04 & 460°FSL OF 1/2 SEC.09)		6372.00	0.00	0.00	3292186.55	1371249.08	40°20'51.860"N	104°27'06.044"W	polygon

SURVEY PROGRAM - Ref Wellbore: WETCO FARMS A11-4-9MRLNB PWB Ref Wellpath: WETCO FARMS A11-4-9MRLNB PWP (REV-A.0)

Start MD [ft]	End MD [ft]	Positional Uncertainty Model	Log Name/Comment	Wellbore
17.00	1550.00	BHI NaviTrak (Rotating+Axial Corr)		WETCO FARMS A11-4-9MRLNB PWB
1550.00	13952.70	BHI AutoTrak Curve (Axial Corr, Short spacing)		WETCO FARMS A11-4-9MRLNB PWB



Planned Wellpath Report

WETCO FARMS A11-4-9MRLNB PWP (REV-A.0)
Page 6 of 6



REFERENCE WELLPATH IDENTIFICATION			
Operator	BONANZA CREEK OIL COMPANY	Slot	SLOT#33 WETCO FARMS A11-4-9MRLNB (346'FNL & 172'FWL, SEC.04)
Area	COLORADO	Well	WETCO FARMS A11-4-9MRLNB
Field	WELD COUNTY	Wellbore	WETCO FARMS A11-4-9MRLNB PWB
Facility	SEC.04-T4N-R63W		

DESIGN COMMENTS				
MD [ft]	Inclination [°]	Azimuth [°]	TVD [ft]	Comment
17.00	0.000	28.997	17.00	Tie On
3278.42	0.000	28.997	3278.42	End of Tangent
3728.42	9.000	28.997	3726.57	End of Build (S)
5688.03	9.000	28.997	5662.06	End of Tangent (S)
6667.11	90.000	180.575	6312.00	End of 3D Arc (S)
13641.46	90.000	180.575	6312.00	End of Tangent