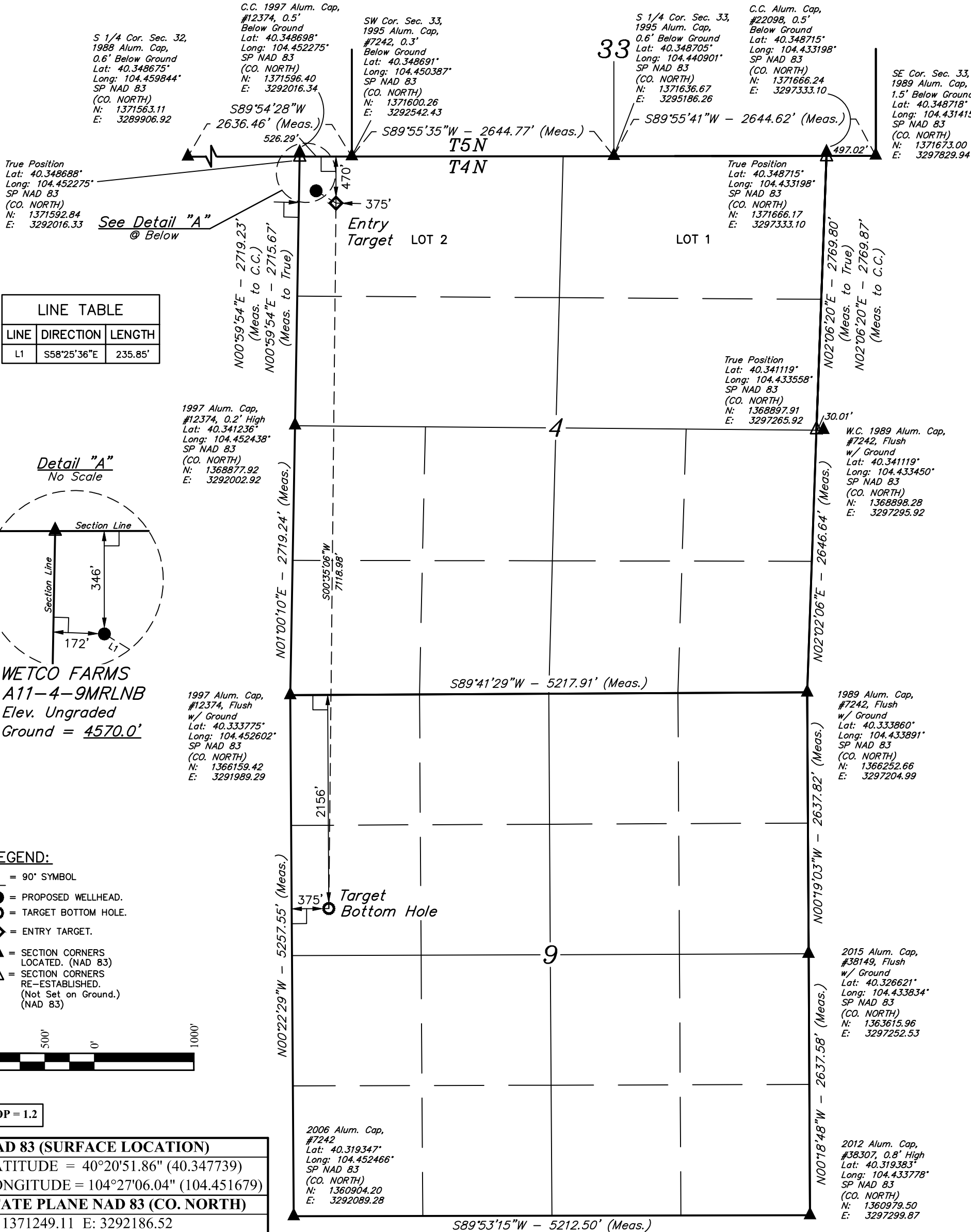


T4N, R63W, 6th P.M.



NAD 83 (SURFACE LOCATION)	
LATITUDE = 40°20'51.86" (40.347739)	
LONGITUDE = 104°27'06.04" (104.451679)	
STATE PLANE NAD 83 (CO. NORTH)	
N: 1371249.11 E: 3292186.52	
NAD 83 (ENTRY TARGET)	
LATITUDE = 40°20'50.64" (40.347400)	
LONGITUDE = 104°27'03.45" (104.450958)	
STATE PLANE NAD 83 (CO. NORTH)	
N: 1371128.17 E: 3292388.94	
NAD 83 (TARGET BOTTOM HOLE)	
LATITUDE = 40°19'40.31" (40.327864)	
LONGITUDE = 104°27'04.33" (104.451203)	
STATE PLANE NAD 83 (CO. NORTH)	
N: 1364011.08 E: 3292405.13	

BASIS OF BEARINGS
BASIS OF BEARINGS IS A G.P.S. OBSERVATION

BASIS OF ELEVATION
USGS COOPERATIVE BASE NETWORK CONTROL STATION, DESIGNATION 'M414'. NGS DATA SHEET LISTS THE NAVD 88 ELEVATION AS BEING 4600.58 FEET



UELS, LLC
Corporate Office * 85 South 200 East
Vernal, UT 84078 * (435) 789-1017



CERTIFICATE OF SURVEY
THIS IS TO CERTIFY THAT THE ABOVE AND WAS PREPARED FROM FIELD NOTES OF ACTUAL SURVEYS MADE BY ME OR UNDER MY SUPERVISION, AND THAT THE SAME ARE TRUE AND CORRECT TO THE BEST OF MY KNOWLEDGE AND BELIEF.



REV: 1 04-03-18 D.J.W. (SHL & ET CHANGE)

**BONANZA CREEK ENERGY
OPERATING COMPANY, LLC**
**WETCO FARMS A11-4-9MRLNB
LOT 2, SECTION 4, T4N, R63W, 6th P.M.
WELD COUNTY, COLORADO**

SURVEYED BY	DALLAS NIELSEN	03-14-18	SCALE
DRAWN BY	L.C.S.	12-21-16	1" = 1000'

WELL LOCATION PLAT