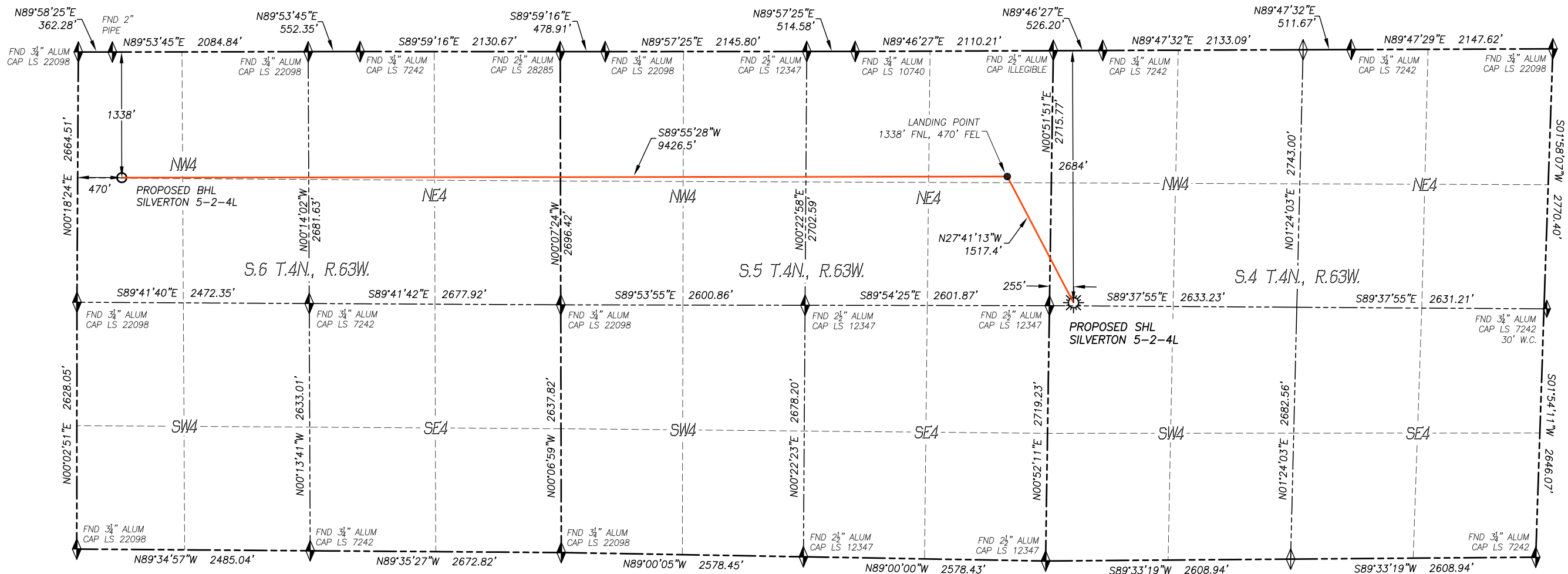


WELL LOCATION CERTIFICATE
SILVERTON 5-2-4L
SECTION 4, TOWNSHIP 4 NORTH, RANGE 63 WEST OF THE 6TH P.M.



IN ACCORDANCE WITH A REQUEST FROM CONFLUENCE RESOURCES, DALEY LAND SURVEYING, INC. HAS DETERMINED THE SURFACE LOCATION OF THE SILVERTON 5-2-4L WELL TO BE 2684' FNL, 255' FWL, AS MEASURED AT NINETY (90) DEGREES FROM THE SECTION LINES OF SECTION 4, TOWNSHIP 4 NORTH, RANGE 63 WEST, AND THE BOTTOM HOLE LOCATION TO BE 1338' FNL, 470' FWL, AS MEASURED AT NINETY (90) DEGREES FROM THE SECTION LINES OF SECTION 6, TOWNSHIP 4 NORTH, RANGE 63 WEST, OF THE 6TH PRINCIPAL MERIDIAN, WELD COUNTY, COLORADO.

I HEREBY STATE THAT THIS WELL LOCATION CERTIFICATE WAS PREPARED BY ME OR UNDER MY DIRECT SUPERVISION, THAT THE WORK WAS COMPLETED ON 5/17/2018 FOR AND ON BEHALF OF CONFLUENCE RESOURCES, AND THAT THIS MAP DOES NOT REPRESENT A BOUNDARY SURVEY, IT IS NOT A LAND SURVEY PLAT OR AN IMPROVEMENT SURVEY PLAT AND IT IS NOT TO BE RELIED UPON FOR THE ESTABLISHMENT OF FENCE, BUILDING OR OTHER FUTURE IMPROVEMENT LINES.

NOTES:

1. BEARINGS FOR THIS MAP ARE ASSUMED AND BASED UPON GPS OBSERVATIONS MADE BETWEEN MONUMENTS LOCATED AT THE WEST QUARTER CORNER AND NORTHWEST CORNER OF SECTION 4, T.4N., R.63W.
2. HORIZONTAL DATUM IS NAD83.
3. VERTICAL DATUM IS NAVD88 AND ORIGINATES FROM THE LOCAL C.O.R.S. NETWORK, UTILIZING THE GEOID12A MODEL.
4. SEE LOCATION DRAWING FOR VISIBLE IMPROVEMENTS WITHIN 500' OF PROPOSED DISTURBED AREA.
5. SURFACE USE: PASTURE/RANGELAND.
6. INST. OPERATOR: KYLE DALEY

NEAREST CULTURAL ITEMS:

BUILDING:	2286'± N
BUILDING UNIT:	2114'± NW
HIGH OCC. BLD. UNIT:	5280'±
DES. OUTSIDE ACTIVITY AREA:	5280'±
PUBLIC ROAD:	495'± NE
ABOVE GROUND UTILITY:	428'± NE
RAILROAD:	5280'±
PROPERTY LINE:	255'± W

NAD 83 LATITUDE AND LONGITUDE

SURFACE LOCATION:

LATITUDE:	N40.34132°
LONGITUDE:	W104.45151°
ELEV.:	4628'
PDOP.:	1.3
QTR/QTR:	SW4/NW4

LANDING POINT:

LATITUDE:	N40.34501°
LONGITUDE:	W104.45403°
LATITUDE:	N40.34502°
LONGITUDE:	W104.48784°

LEGEND

- ◆ FOUND MONUMENT AS DESCRIBED
- ◆ CALCULATED POSITION
- ☀ PROPOSED WELL
- EXISTING WELL
- BOTTOM HOLE

