



Well: Silverton 5-04-1L
Site: Section 04-T04N-R63W
Project: Weld County, Colorado
Wellbore: Original Hole
Design: plan1

Section Details

Sec	MD	Inc	Azi	TVD	+N/-S	+E/-W	Dleg	VSec	Annotation
1	0.00	0.00	0.00	0.00	0.00	0.00	0.00	0.00	
2	2000.00	0.00	0.00	2000.00	0.00	0.00	0.00	0.00	KOP Begin 2°/100' build
3	3092.82	21.86	354.46	3066.51	204.96	-19.89	2.00	49.87	Begin 21.86° tangent section
4	6069.16	21.86	354.46	5828.91	1307.82	-126.90	0.00	318.19	Begin 10°/100' build/turn
5	6948.68	90.00	269.97	6342.00	1512.37	-699.60	10.00	914.78	LP Begin 90° lateral
6	16368.20	90.00	269.97	6342.00	1507.24	-10119.12	0.00	10230.76	PBHL/TD 16368.20 MD 6342.00 TVD

DESIGN TARGET DETAILS

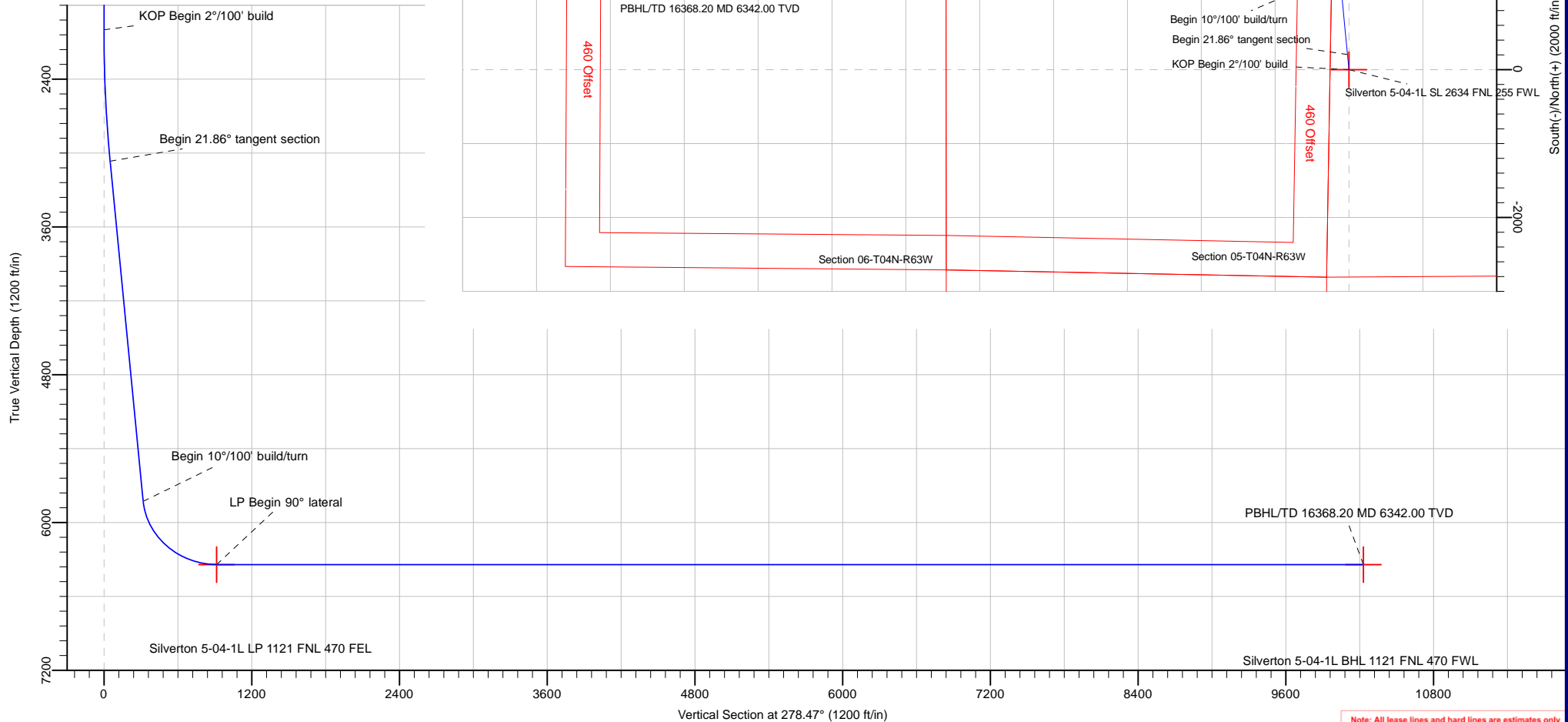
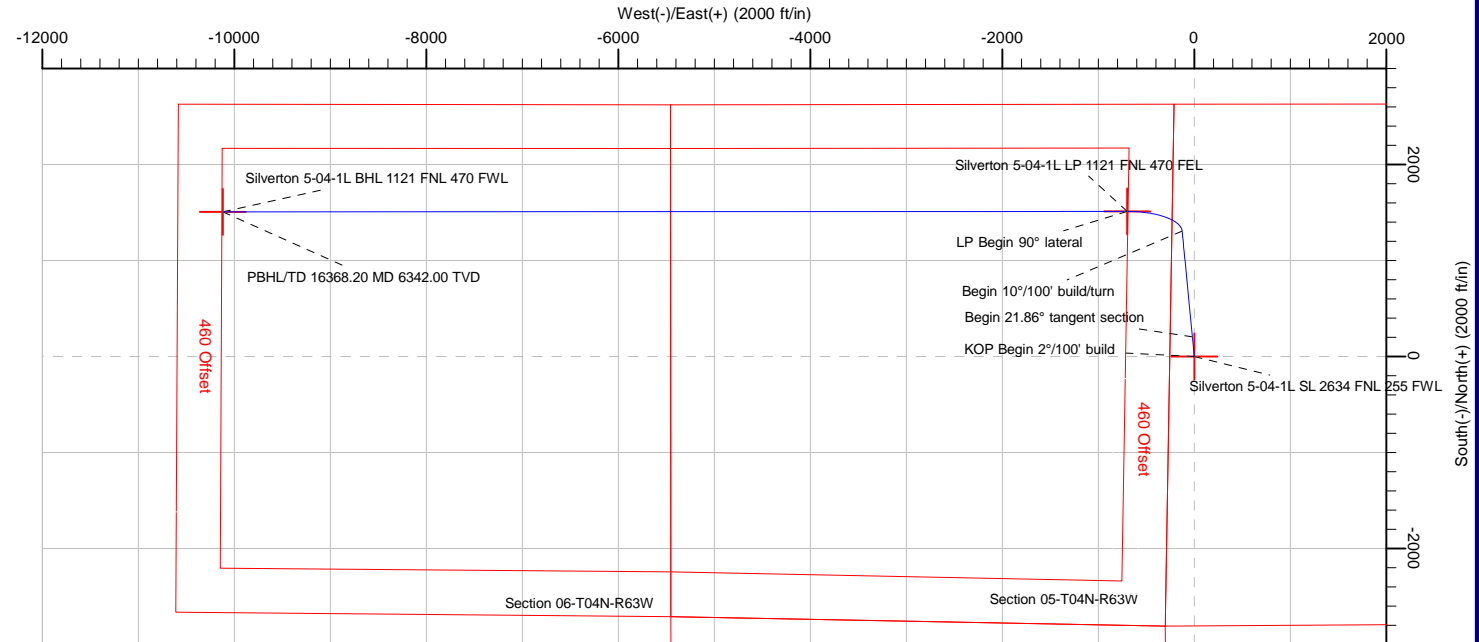
Name	TVD	+N/-S	+E/-W	Northing	Easting	Latitude	Longitude
Silverton 5-04-1L SL 2634 FNL 255 FWL	24.00	0.00	0.00	14651557.20	1793252.94	40.34147950	-104.45151491
Silverton 5-04-1L BHL 1121 FNL 470 FWL	6342.00	1507.24	-10119.12	14653001.70	1783124.69	40.34561262	-104.48783084
Silverton 5-04-1L LP 1121 FNL 470 FEL	6342.00	1512.37	-699.60	14653065.20	1792543.98	40.34563236	-104.45402567

Silverton 5-04-1L Surf loc: 2634 FNL 255 FWL Section 04-T04N-R63W			
NAD83 Colorado - HARN Universal Transverse Mercator (US Survey Feet) Zone 13N (108 W to 102 W) RKB=4628+24 @ 4652.00ft			
Northing	Easting	Latitude	Longitude
14651557.20	1793252.94	40.34147950	-104.45151491



Azimuths to True North
Magnetic North: 8.08°

Magnetic Field
Strength: 52227.9snT
Dip Angle: 66.90°
Date: 5/29/2018
Model: HDGM



Note: All lease lines and hard lines are estimates only and are subject to customers approval.

Database:	DB_Aug0116_LT_v14	Local Co-ordinate Reference:	Well Silverton 5-04-1L
Company:	Confluence Resources	TVD Reference:	RKB=4628+24 @ 4652.00ft
Project:	Weld County, Colorado	MD Reference:	RKB=4628+24 @ 4652.00ft
Site:	Section 04-T04N-R63W	North Reference:	True
Well:	Silverton 5-04-1L	Survey Calculation Method:	Minimum Curvature
Wellbore:	Original Hole		
Design:	plan1		

Project	Weld County, Colorado		
Map System:	Universal Transverse Mercator (US Survey Feet)	System Datum:	Mean Sea Level
Geo Datum:	NAD83 Colorado - HARN		
Map Zone:	Zone 13N (108 W to 102 W)		

Site		Section 04-T04N-R63W			
Site Position:		Northing:	14,650,073.90 usft	Latitude:	40.33740565
From:	Map	Easting:	1,793,302.13 usft	Longitude:	-104.45137138
Position Uncertainty:	0.00 ft	Slot Radius:	13-3/16 "	Grid Convergence:	0.36 °

Well	Silverton 5-04-1L, Surf loc: 2634 FNL 255 FWL Section 04-T04N-R63W					
Well Position	+N/-S	0.00 ft	Northing:	14,651,557.20 usft	Latitude:	40.34147949
	+E/-W	0.00 ft	Easting:	1,793,252.94 usft	Longitude:	-104.45151491
Position Uncertainty		0.00 ft	Wellhead Elevation:		Ground Level:	4,628.00 ft

Wellbore	Original Hole				
Magnetics	Model Name	Sample Date	Declination (°)	Dip Angle (°)	Field Strength (nT)
	HDGM	5/29/2018	8.08	66.90	52,227.90000000

Design	plan1			
Audit Notes:				
Version:	Phase:	PLAN	Tie On Depth:	0.00
Vertical Section:	Depth From (TVD) (ft)	+N/-S (ft)	+E/-W (ft)	Direction (°)
	0.00	0.00	0.00	278.47

Plan Survey Tool Program	Date	5/29/2018		
Depth From (ft)	Depth To (ft)	Survey (Wellbore)	Tool Name	Remarks
1	0.00	16,368.20 plan1 (Original Hole)		

Plan Sections										
Measured Depth (ft)	Inclination (°)	Azimuth (°)	Vertical Depth (ft)	+N/-S (ft)	+E/-W (ft)	Dogleg Rate (°/100ft)	Build Rate (°/100ft)	Turn Rate (°/100ft)	TFO (°)	Target
0.00	0.00	0.00	0.00	0.00	0.00	0.00	0.00	0.00	0.00	
2,000.00	0.00	0.00	2,000.00	0.00	0.00	0.00	0.00	0.00	0.00	
3,092.82	21.86	354.46	3,066.51	204.96	-19.89	2.00	2.00	0.00	354.46	
6,069.16	21.86	354.46	5,828.91	1,307.82	-126.90	0.00	0.00	0.00	0.00	
6,948.68	90.00	269.97	6,342.00	1,512.37	-699.60	10.00	7.75	-9.61	-84.88	Silverton 5-04-1L LP
16,368.20	90.00	269.97	6,342.00	1,507.24	-10,119.12	0.00	0.00	0.00	0.00	Silverton 5-04-1L BHL

Database:	DB_Aug0116_LT_v14	Local Co-ordinate Reference:	Well Silverton 5-04-1L
Company:	Confluence Resources	TVD Reference:	RKB=4628+24 @ 4652.00ft
Project:	Weld County, Colorado	MD Reference:	RKB=4628+24 @ 4652.00ft
Site:	Section 04-T04N-R63W	North Reference:	True
Well:	Silverton 5-04-1L	Survey Calculation Method:	Minimum Curvature
Wellbore:	Original Hole		
Design:	plan1		

Planned Survey									
Measured Depth (ft)	Inclination (°)	Azimuth (°)	Vertical Depth (ft)	+N/-S (ft)	+E/-W (ft)	Map Northing (usft)	Map Easting (usft)	Latitude	Longitude
0.00	0.00	0.00	0.00	0.00	0.00	14,651,557.20	1,793,252.94	40.34147949	-104.45151491
100.00	0.00	0.00	100.00	0.00	0.00	14,651,557.20	1,793,252.94	40.34147949	-104.45151491
200.00	0.00	0.00	200.00	0.00	0.00	14,651,557.20	1,793,252.94	40.34147949	-104.45151491
300.00	0.00	0.00	300.00	0.00	0.00	14,651,557.20	1,793,252.94	40.34147949	-104.45151491
400.00	0.00	0.00	400.00	0.00	0.00	14,651,557.20	1,793,252.94	40.34147949	-104.45151491
500.00	0.00	0.00	500.00	0.00	0.00	14,651,557.20	1,793,252.94	40.34147949	-104.45151491
600.00	0.00	0.00	600.00	0.00	0.00	14,651,557.20	1,793,252.94	40.34147949	-104.45151491
700.00	0.00	0.00	700.00	0.00	0.00	14,651,557.20	1,793,252.94	40.34147949	-104.45151491
800.00	0.00	0.00	800.00	0.00	0.00	14,651,557.20	1,793,252.94	40.34147949	-104.45151491
900.00	0.00	0.00	900.00	0.00	0.00	14,651,557.20	1,793,252.94	40.34147949	-104.45151491
1,000.00	0.00	0.00	1,000.00	0.00	0.00	14,651,557.20	1,793,252.94	40.34147949	-104.45151491
1,100.00	0.00	0.00	1,100.00	0.00	0.00	14,651,557.20	1,793,252.94	40.34147949	-104.45151491
1,200.00	0.00	0.00	1,200.00	0.00	0.00	14,651,557.20	1,793,252.94	40.34147949	-104.45151491
1,300.00	0.00	0.00	1,300.00	0.00	0.00	14,651,557.20	1,793,252.94	40.34147949	-104.45151491
1,400.00	0.00	0.00	1,400.00	0.00	0.00	14,651,557.20	1,793,252.94	40.34147949	-104.45151491
1,500.00	0.00	0.00	1,500.00	0.00	0.00	14,651,557.20	1,793,252.94	40.34147949	-104.45151491
1,600.00	0.00	0.00	1,600.00	0.00	0.00	14,651,557.20	1,793,252.94	40.34147949	-104.45151491
1,700.00	0.00	0.00	1,700.00	0.00	0.00	14,651,557.20	1,793,252.94	40.34147949	-104.45151491
1,800.00	0.00	0.00	1,800.00	0.00	0.00	14,651,557.20	1,793,252.94	40.34147949	-104.45151491
1,900.00	0.00	0.00	1,900.00	0.00	0.00	14,651,557.20	1,793,252.94	40.34147949	-104.45151491
2,000.00	0.00	0.00	2,000.00	0.00	0.00	14,651,557.20	1,793,252.94	40.34147949	-104.45151491
KOP Begin 2°/100' build									
2,100.00	2.00	354.46	2,099.98	1.74	-0.17	14,651,558.93	1,793,252.76	40.34148426	-104.45151552
2,200.00	4.00	354.46	2,199.84	6.95	-0.67	14,651,564.14	1,793,252.22	40.34149856	-104.45151733
2,300.00	6.00	354.46	2,299.45	15.62	-1.52	14,651,572.81	1,793,251.33	40.34152238	-104.45152035
2,400.00	8.00	354.46	2,398.70	27.75	-2.69	14,651,584.93	1,793,250.08	40.34155569	-104.45152457
2,500.00	10.00	354.46	2,497.47	43.32	-4.20	14,651,600.49	1,793,248.47	40.34159844	-104.45153000
2,600.00	12.00	354.46	2,595.62	62.31	-6.05	14,651,619.47	1,793,246.51	40.34165059	-104.45153661
2,700.00	14.00	354.46	2,693.06	84.70	-8.22	14,651,641.84	1,793,244.20	40.34171207	-104.45154440
2,800.00	16.00	354.46	2,789.64	110.46	-10.72	14,651,667.59	1,793,241.54	40.34178280	-104.45155337
2,900.00	18.00	354.46	2,885.27	139.56	-13.54	14,651,696.67	1,793,238.53	40.34186271	-104.45156351
3,000.00	20.00	354.46	2,979.82	171.96	-16.69	14,651,729.05	1,793,235.19	40.34195169	-104.45157479
3,092.82	21.86	354.46	3,066.51	204.96	-19.89	14,651,762.03	1,793,231.78	40.34204230	-104.45158628
Begin 21.86° tangent section									
3,100.00	21.86	354.46	3,073.17	207.62	-20.15	14,651,764.69	1,793,231.51	40.34204960	-104.45158721
3,200.00	21.86	354.46	3,165.98	244.67	-23.74	14,651,801.72	1,793,227.68	40.34215135	-104.45160011
3,300.00	21.86	354.46	3,258.80	281.73	-27.34	14,651,838.75	1,793,223.86	40.34225310	-104.45161301
3,400.00	21.86	354.46	3,351.61	318.78	-30.93	14,651,875.78	1,793,220.03	40.34235485	-104.45162592
3,500.00	21.86	354.46	3,444.42	355.84	-34.53	14,651,912.81	1,793,216.21	40.34245660	-104.45163882
3,600.00	21.86	354.46	3,537.23	392.89	-38.12	14,651,949.84	1,793,212.38	40.34255835	-104.45165172
3,700.00	21.86	354.46	3,630.04	429.95	-41.72	14,651,986.88	1,793,208.56	40.34266010	-104.45166462
3,800.00	21.86	354.46	3,722.86	467.00	-45.31	14,652,023.91	1,793,204.73	40.34276185	-104.45167753
3,900.00	21.86	354.46	3,815.67	504.05	-48.91	14,652,060.94	1,793,200.91	40.34286360	-104.45169043
4,000.00	21.86	354.46	3,908.48	541.11	-52.50	14,652,097.97	1,793,197.08	40.34296535	-104.45170333
4,100.00	21.86	354.46	4,001.29	578.16	-56.10	14,652,135.00	1,793,193.26	40.34306710	-104.45171624
4,200.00	21.86	354.46	4,094.10	615.22	-59.70	14,652,172.03	1,793,189.43	40.34316885	-104.45172914
4,300.00	21.86	354.46	4,186.92	652.27	-63.29	14,652,209.06	1,793,185.61	40.34327059	-104.45174204
4,400.00	21.86	354.46	4,279.73	689.33	-66.89	14,652,246.09	1,793,181.78	40.34337234	-104.45175495
4,500.00	21.86	354.46	4,372.54	726.38	-70.48	14,652,283.12	1,793,177.96	40.34347409	-104.45176785
4,600.00	21.86	354.46	4,465.35	763.43	-74.08	14,652,320.16	1,793,174.13	40.34357584	-104.45178075
4,700.00	21.86	354.46	4,558.16	800.49	-77.67	14,652,357.19	1,793,170.31	40.34367759	-104.45179366
4,800.00	21.86	354.46	4,650.97	837.54	-81.27	14,652,394.22	1,793,166.48	40.34377934	-104.45180656
4,900.00	21.86	354.46	4,743.79	874.60	-84.86	14,652,431.25	1,793,162.66	40.34388109	-104.45181946
5,000.00	21.86	354.46	4,836.60	911.65	-88.46	14,652,468.28	1,793,158.83	40.34398284	-104.45183237

Database:	DB_Aug0116_LT_v14	Local Co-ordinate Reference:	Well Silverton 5-04-1L
Company:	Confluence Resources	TVD Reference:	RKB=4628+24 @ 4652.00ft
Project:	Weld County, Colorado	MD Reference:	RKB=4628+24 @ 4652.00ft
Site:	Section 04-T04N-R63W	North Reference:	True
Well:	Silverton 5-04-1L	Survey Calculation Method:	Minimum Curvature
Wellbore:	Original Hole		
Design:	plan1		

Planned Survey									
Measured Depth (ft)	Inclination (°)	Azimuth (°)	Vertical Depth (ft)	+N/-S (ft)	+E/-W (ft)	Map Northing (usft)	Map Easting (usft)	Latitude	Longitude
5,100.00	21.86	354.46	4,929.41	948.71	-92.05	14,652,505.31	1,793,155.01	40.34408459	-104.45184527
5,200.00	21.86	354.46	5,022.22	985.76	-95.65	14,652,542.34	1,793,151.18	40.34418634	-104.45185817
5,300.00	21.86	354.46	5,115.03	1,022.81	-99.24	14,652,579.37	1,793,147.36	40.34428809	-104.45187108
5,400.00	21.86	354.46	5,207.85	1,059.87	-102.84	14,652,616.41	1,793,143.53	40.34438984	-104.45188398
5,500.00	21.86	354.46	5,300.66	1,096.92	-106.44	14,652,653.44	1,793,139.71	40.34449159	-104.45189689
5,600.00	21.86	354.46	5,393.47	1,133.98	-110.03	14,652,690.47	1,793,135.88	40.34459333	-104.45190979
5,700.00	21.86	354.46	5,486.28	1,171.03	-113.63	14,652,727.50	1,793,132.06	40.34469508	-104.45192269
5,800.00	21.86	354.46	5,579.09	1,208.09	-117.22	14,652,764.53	1,793,128.23	40.34479683	-104.45193560
5,900.00	21.86	354.46	5,671.91	1,245.14	-120.82	14,652,801.56	1,793,124.41	40.34489858	-104.45194850
6,000.00	21.86	354.46	5,764.72	1,282.19	-124.41	14,652,838.59	1,793,120.58	40.34500033	-104.45196140
6,069.16	21.86	354.46	5,828.91	1,307.82	-126.90	14,652,864.21	1,793,117.94	40.34507071	-104.45197033
Begin 10°/100' build/turn									
6,100.00	22.33	346.35	5,857.49	1,319.23	-128.84	14,652,875.60	1,793,115.93	40.34510203	-104.45197728
6,200.00	26.30	323.87	5,948.80	1,355.68	-146.43	14,652,911.94	1,793,098.12	40.34520211	-104.45204041
6,300.00	32.78	308.29	6,035.88	1,390.43	-180.82	14,652,946.48	1,793,063.51	40.34529754	-104.45216385
6,400.00	40.58	297.76	6,116.10	1,422.43	-230.97	14,652,978.17	1,793,013.16	40.34538541	-104.45234384
6,500.00	49.07	290.23	6,187.02	1,450.71	-295.36	14,653,006.04	1,792,948.59	40.34546306	-104.45257492
6,600.00	57.93	284.46	6,246.47	1,474.41	-372.03	14,653,029.27	1,792,871.78	40.34552813	-104.45285007
6,700.00	67.01	279.72	6,292.66	1,492.80	-458.65	14,653,047.12	1,792,785.05	40.34557864	-104.45316093
6,800.00	76.21	275.59	6,324.19	1,505.34	-552.59	14,653,059.08	1,792,691.04	40.34561305	-104.45349805
6,900.00	85.48	271.78	6,340.08	1,511.63	-650.98	14,653,064.76	1,792,592.60	40.34563032	-104.45385119
6,948.68	90.00	269.97	6,342.00	1,512.37	-699.60	14,653,065.20	1,792,543.98	40.34563235	-104.45402567
LP Begin 90° lateral									
7,000.00	90.00	269.97	6,342.00	1,512.34	-750.93	14,653,064.85	1,792,492.66	40.34563227	-104.45420986
7,100.00	90.00	269.97	6,342.00	1,512.29	-850.93	14,653,064.18	1,792,392.66	40.34563211	-104.45456875
7,200.00	90.00	269.97	6,342.00	1,512.23	-950.93	14,653,063.50	1,792,292.66	40.34563195	-104.45492763
7,300.00	90.00	269.97	6,342.00	1,512.18	-1,050.93	14,653,062.83	1,792,192.66	40.34563179	-104.45528652
7,400.00	90.00	269.97	6,342.00	1,512.12	-1,150.93	14,653,062.16	1,792,092.67	40.34563163	-104.45564540
7,500.00	90.00	269.97	6,342.00	1,512.07	-1,250.93	14,653,061.48	1,791,992.67	40.34563147	-104.45600428
7,600.00	90.00	269.97	6,342.00	1,512.01	-1,350.93	14,653,060.81	1,791,892.67	40.34563130	-104.45636317
7,700.00	90.00	269.97	6,342.00	1,511.96	-1,450.93	14,653,060.13	1,791,792.67	40.34563114	-104.45672205
7,800.00	90.00	269.97	6,342.00	1,511.90	-1,550.93	14,653,059.46	1,791,692.68	40.34563097	-104.45708093
7,900.00	90.00	269.97	6,342.00	1,511.85	-1,650.93	14,653,058.78	1,791,592.68	40.34563081	-104.45743982
8,000.00	90.00	269.97	6,342.00	1,511.80	-1,750.93	14,653,058.11	1,791,492.68	40.34563064	-104.45779870
8,100.00	90.00	269.97	6,342.00	1,511.74	-1,850.93	14,653,057.44	1,791,392.68	40.34563047	-104.45815759
8,200.00	90.00	269.97	6,342.00	1,511.69	-1,950.93	14,653,056.76	1,791,292.69	40.34563030	-104.45851647
8,300.00	90.00	269.97	6,342.00	1,511.63	-2,050.93	14,653,056.09	1,791,192.69	40.34563013	-104.45887535
8,400.00	90.00	269.97	6,342.00	1,511.58	-2,150.93	14,653,055.41	1,791,092.69	40.34562995	-104.45923424
8,500.00	90.00	269.97	6,342.00	1,511.52	-2,250.93	14,653,054.74	1,790,992.69	40.34562978	-104.45959312
8,600.00	90.00	269.97	6,342.00	1,511.47	-2,350.93	14,653,054.07	1,790,892.70	40.34562961	-104.45995200
8,700.00	90.00	269.97	6,342.00	1,511.42	-2,450.93	14,653,053.39	1,790,792.70	40.34562943	-104.46031089
8,800.00	90.00	269.97	6,342.00	1,511.36	-2,550.93	14,653,052.72	1,790,692.70	40.34562925	-104.46066977
8,900.00	90.00	269.97	6,342.00	1,511.31	-2,650.93	14,653,052.04	1,790,592.70	40.34562907	-104.46102866
9,000.00	90.00	269.97	6,342.00	1,511.25	-2,750.93	14,653,051.37	1,790,492.71	40.34562889	-104.46138754
9,100.00	90.00	269.97	6,342.00	1,511.20	-2,850.93	14,653,050.69	1,790,392.71	40.34562871	-104.46174642
9,200.00	90.00	269.97	6,342.00	1,511.14	-2,950.93	14,653,050.02	1,790,292.71	40.34562853	-104.46210531
9,300.00	90.00	269.97	6,342.00	1,511.09	-3,050.93	14,653,049.35	1,790,192.71	40.34562835	-104.46246419
9,400.00	90.00	269.97	6,342.00	1,511.03	-3,150.93	14,653,048.67	1,790,092.72	40.34562817	-104.46282308
9,500.00	90.00	269.97	6,342.00	1,510.98	-3,250.93	14,653,048.00	1,789,992.72	40.34562798	-104.46318196
9,600.00	90.00	269.97	6,342.00	1,510.93	-3,350.93	14,653,047.32	1,789,892.72	40.34562779	-104.46354084
9,700.00	90.00	269.97	6,342.00	1,510.87	-3,450.93	14,653,046.65	1,789,792.72	40.34562761	-104.46389973
9,800.00	90.00	269.97	6,342.00	1,510.82	-3,550.93	14,653,045.98	1,789,692.73	40.34562742	-104.46425861
9,900.00	90.00	269.97	6,342.00	1,510.76	-3,650.93	14,653,045.30	1,789,592.73	40.34562723	-104.46461750
10,000.00	90.00	269.97	6,342.00	1,510.71	-3,750.93	14,653,044.63	1,789,492.73	40.34562704	-104.46497638

Database:	DB_Aug0116_LT_v14	Local Co-ordinate Reference:	Well Silverton 5-04-1L
Company:	Confluence Resources	TVD Reference:	RKB=4628+24 @ 4652.00ft
Project:	Weld County, Colorado	MD Reference:	RKB=4628+24 @ 4652.00ft
Site:	Section 04-T04N-R63W	North Reference:	True
Well:	Silverton 5-04-1L	Survey Calculation Method:	Minimum Curvature
Wellbore:	Original Hole		
Design:	plan1		

Planned Survey									
Measured Depth (ft)	Inclination (°)	Azimuth (°)	Vertical Depth (ft)	+N/-S (ft)	+E/-W (ft)	Map Northing (usft)	Map Easting (usft)	Latitude	Longitude
10,100.00	90.00	269.97	6,342.00	1,510.65	-3,850.93	14,653,043.95	1,789,392.73	40.34562685	-104.46533526
10,200.00	90.00	269.97	6,342.00	1,510.60	-3,950.93	14,653,043.28	1,789,292.74	40.34562665	-104.46569415
10,300.00	90.00	269.97	6,342.00	1,510.54	-4,050.93	14,653,042.61	1,789,192.74	40.34562646	-104.46605303
10,400.00	90.00	269.97	6,342.00	1,510.49	-4,150.93	14,653,041.93	1,789,092.74	40.34562627	-104.46641192
10,500.00	90.00	269.97	6,342.00	1,510.44	-4,250.93	14,653,041.26	1,788,992.74	40.34562607	-104.46677080
10,600.00	90.00	269.97	6,342.00	1,510.38	-4,350.93	14,653,040.58	1,788,892.75	40.34562587	-104.46712968
10,700.00	90.00	269.97	6,342.00	1,510.33	-4,450.93	14,653,039.91	1,788,792.75	40.34562567	-104.46748857
10,800.00	90.00	269.97	6,342.00	1,510.27	-4,550.93	14,653,039.23	1,788,692.75	40.34562547	-104.46784745
10,900.00	90.00	269.97	6,342.00	1,510.22	-4,650.93	14,653,038.56	1,788,592.75	40.34562527	-104.46820634
11,000.00	90.00	269.97	6,342.00	1,510.16	-4,750.93	14,653,037.89	1,788,492.76	40.34562507	-104.46856522
11,100.00	90.00	269.97	6,342.00	1,510.11	-4,850.93	14,653,037.21	1,788,392.76	40.34562487	-104.46892410
11,200.00	90.00	269.97	6,342.00	1,510.06	-4,950.93	14,653,036.54	1,788,292.76	40.34562467	-104.46928299
11,300.00	90.00	269.97	6,342.00	1,510.00	-5,050.93	14,653,035.86	1,788,192.76	40.34562446	-104.46964187
11,400.00	90.00	269.97	6,342.00	1,509.95	-5,150.93	14,653,035.19	1,788,092.77	40.34562425	-104.47000076
11,500.00	90.00	269.97	6,342.00	1,509.89	-5,250.93	14,653,034.52	1,787,992.77	40.34562405	-104.47035964
11,600.00	90.00	269.97	6,342.00	1,509.84	-5,350.93	14,653,033.84	1,787,892.77	40.34562384	-104.47071852
11,700.00	90.00	269.97	6,342.00	1,509.78	-5,450.93	14,653,033.17	1,787,792.77	40.34562363	-104.47107741
11,800.00	90.00	269.97	6,342.00	1,509.73	-5,550.93	14,653,032.49	1,787,692.78	40.34562342	-104.47143629
11,900.00	90.00	269.97	6,342.00	1,509.67	-5,650.93	14,653,031.82	1,787,592.78	40.34562321	-104.47179518
12,000.00	90.00	269.97	6,342.00	1,509.62	-5,750.93	14,653,031.14	1,787,492.78	40.34562299	-104.47215406
12,100.00	90.00	269.97	6,342.00	1,509.57	-5,850.93	14,653,030.47	1,787,392.78	40.34562278	-104.47251294
12,200.00	90.00	269.97	6,342.00	1,509.51	-5,950.93	14,653,029.80	1,787,292.79	40.34562257	-104.47287183
12,300.00	90.00	269.97	6,342.00	1,509.46	-6,050.93	14,653,029.12	1,787,192.79	40.34562235	-104.47323071
12,400.00	90.00	269.97	6,342.00	1,509.40	-6,150.93	14,653,028.45	1,787,092.79	40.34562213	-104.47358960
12,500.00	90.00	269.97	6,342.00	1,509.35	-6,250.93	14,653,027.77	1,786,992.79	40.34562191	-104.47394848
12,600.00	90.00	269.97	6,342.00	1,509.29	-6,350.93	14,653,027.10	1,786,892.80	40.34562169	-104.47430737
12,700.00	90.00	269.97	6,342.00	1,509.24	-6,450.93	14,653,026.43	1,786,792.80	40.34562147	-104.47466625
12,800.00	90.00	269.97	6,342.00	1,509.18	-6,550.93	14,653,025.75	1,786,692.80	40.34562125	-104.47502513
12,900.00	90.00	269.97	6,342.00	1,509.13	-6,650.93	14,653,025.08	1,786,592.80	40.34562103	-104.47538402
13,000.00	90.00	269.97	6,342.00	1,509.08	-6,750.93	14,653,024.40	1,786,492.81	40.34562080	-104.47574290
13,100.00	90.00	269.97	6,342.00	1,509.02	-6,850.93	14,653,023.73	1,786,392.81	40.34562058	-104.47610179
13,200.00	90.00	269.97	6,342.00	1,508.97	-6,950.93	14,653,023.06	1,786,292.81	40.34562035	-104.47646067
13,300.00	90.00	269.97	6,342.00	1,508.91	-7,050.93	14,653,022.38	1,786,192.81	40.34562013	-104.47681956
13,400.00	90.00	269.97	6,342.00	1,508.86	-7,150.93	14,653,021.71	1,786,092.82	40.34561990	-104.47717844
13,500.00	90.00	269.97	6,342.00	1,508.80	-7,250.93	14,653,021.03	1,785,992.82	40.34561967	-104.47753732
13,600.00	90.00	269.97	6,342.00	1,508.75	-7,350.93	14,653,020.36	1,785,892.82	40.34561944	-104.47789621
13,700.00	90.00	269.97	6,342.00	1,508.70	-7,450.93	14,653,019.68	1,785,792.82	40.34561921	-104.47825509
13,800.00	90.00	269.97	6,342.00	1,508.64	-7,550.93	14,653,019.01	1,785,692.83	40.34561897	-104.47861398
13,900.00	90.00	269.97	6,342.00	1,508.59	-7,650.93	14,653,018.34	1,785,592.83	40.34561874	-104.47897286
14,000.00	90.00	269.97	6,342.00	1,508.53	-7,750.93	14,653,017.66	1,785,492.83	40.34561850	-104.47933175
14,100.00	90.00	269.97	6,342.00	1,508.48	-7,850.93	14,653,016.99	1,785,392.83	40.34561827	-104.47969063
14,200.00	90.00	269.97	6,342.00	1,508.42	-7,950.93	14,653,016.31	1,785,292.83	40.34561803	-104.48004951
14,300.00	90.00	269.97	6,342.00	1,508.37	-8,050.93	14,653,015.64	1,785,192.84	40.34561779	-104.48040840
14,400.00	90.00	269.97	6,342.00	1,508.31	-8,150.93	14,653,014.97	1,785,092.84	40.34561755	-104.48076728
14,500.00	90.00	269.97	6,342.00	1,508.26	-8,250.93	14,653,014.29	1,784,992.84	40.34561731	-104.48112617
14,600.00	90.00	269.97	6,342.00	1,508.21	-8,350.93	14,653,013.62	1,784,892.84	40.34561707	-104.48148505
14,700.00	90.00	269.97	6,342.00	1,508.15	-8,450.93	14,653,012.94	1,784,792.85	40.34561683	-104.48184394
14,800.00	90.00	269.97	6,342.00	1,508.10	-8,550.93	14,653,012.27	1,784,692.85	40.34561658	-104.48220282
14,900.00	90.00	269.97	6,342.00	1,508.04	-8,650.93	14,653,011.60	1,784,592.85	40.34561634	-104.48256171
15,000.00	90.00	269.97	6,342.00	1,507.99	-8,750.93	14,653,010.92	1,784,492.85	40.34561609	-104.48292059
15,100.00	90.00	269.97	6,342.00	1,507.93	-8,850.93	14,653,010.25	1,784,392.86	40.34561584	-104.48327947
15,200.00	90.00	269.97	6,342.00	1,507.88	-8,950.93	14,653,009.57	1,784,292.86	40.34561560	-104.48363836
15,300.00	90.00	269.97	6,342.00	1,507.82	-9,050.93	14,653,008.90	1,784,192.86	40.34561535	-104.48399724
15,400.00	90.00	269.97	6,342.00	1,507.77	-9,150.93	14,653,008.22	1,784,092.86	40.34561510	-104.48435612
15,500.00	90.00	269.97	6,342.00	1,507.72	-9,250.93	14,653,007.55	1,783,992.87	40.34561484	-104.48471500

Database:	DB_Aug0116_LT_v14	Local Co-ordinate Reference:	Well Silverton 5-04-1L
Company:	Confluence Resources	TVD Reference:	RKB=4628+24 @ 4652.00ft
Project:	Weld County, Colorado	MD Reference:	RKB=4628+24 @ 4652.00ft
Site:	Section 04-T04N-R63W	North Reference:	True
Well:	Silverton 5-04-1L	Survey Calculation Method:	Minimum Curvature
Wellbore:	Original Hole		
Design:	plan1		

Planned Survey									
Measured Depth (ft)	Inclination (°)	Azimuth (°)	Vertical Depth (ft)	+N/-S (ft)	+E/-W (ft)	Map Northing (usft)	Map Easting (usft)	Latitude	Longitude
15,600.00	90.00	269.97	6,342.00	1,507.66	-9,350.93	14,653,006.88	1,783,892.87	40.34561459	-104.48507389
15,700.00	90.00	269.97	6,342.00	1,507.61	-9,450.93	14,653,006.20	1,783,792.87	40.34561434	-104.48543277
15,800.00	90.00	269.97	6,342.00	1,507.55	-9,550.93	14,653,005.53	1,783,692.87	40.34561408	-104.48579166
15,900.00	90.00	269.97	6,342.00	1,507.50	-9,650.93	14,653,004.85	1,783,592.88	40.34561383	-104.48615054
16,000.00	90.00	269.97	6,342.00	1,507.44	-9,750.93	14,653,004.18	1,783,492.88	40.34561357	-104.48650943
16,100.00	90.00	269.97	6,342.00	1,507.39	-9,850.93	14,653,003.51	1,783,392.88	40.34561331	-104.48686831
16,200.00	90.00	269.97	6,342.00	1,507.34	-9,950.93	14,653,002.83	1,783,292.88	40.34561305	-104.48722719
16,300.00	90.00	269.97	6,342.00	1,507.28	-10,050.93	14,653,002.16	1,783,192.89	40.34561279	-104.48758608
16,368.20	90.00	269.97	6,342.00	1,507.24	-10,119.12	14,653,001.70	1,783,124.69	40.34561261	-104.48783083
PBHL/TD 16368.20 MD 6342.00 TVD									

Design Targets									
Target Name - hit/miss target - Shape	Dip Angle (°)	Dip Dir. (°)	TVD (ft)	+N/-S (ft)	+E/-W (ft)	Northing (usft)	Easting (usft)	Latitude	Longitude
Silverton 5-04-1L SL 263 - plan hits target center - Point	0.00	0.00	24.00	0.00	0.00	14,651,557.20	1,793,252.94	40.34147949	-104.45151491
Silverton 5-04-1L BHL 1' - plan hits target center - Point	0.00	0.00	6,342.00	1,507.24	-10,119.12	14,653,001.70	1,783,124.69	40.34561261	-104.48783083
Silverton 5-04-1L LP 112 - plan hits target center - Point	0.00	0.00	6,342.00	1,512.37	-699.60	14,653,065.20	1,792,543.98	40.34563235	-104.45402567

Plan Annotations				
Measured Depth (ft)	Vertical Depth (ft)	Local Coordinates		Comment
		+N/-S (ft)	+E/-W (ft)	
2,000.00	2,000.00	0.00	0.00	KOP Begin 2°/100' build
3,092.82	3,066.51	204.96	-19.89	Begin 21.86° tangent section
6,069.16	5,828.91	1,307.82	-126.90	Begin 10°/100' build/turn
6,948.68	6,342.00	1,512.37	-699.60	LP Begin 90° lateral
16,368.20	6,342.00	1,507.24	-10,119.12	PBHL/TD 16368.20 MD 6342.00 TVD

Database:	DB_Aug0116_LT_v14	Local Co-ordinate Reference:	Well Silverton 5-04-1L
Company:	Confluence Resources	TVD Reference:	RKB=4628+24 @ 4652.00ft
Project:	Weld County, Colorado	MD Reference:	RKB=4628+24 @ 4652.00ft
Site:	Section 04-T04N-R63W	North Reference:	True
Well:	Silverton 5-04-1L	Survey Calculation Method:	Minimum Curvature
Wellbore:	Original Hole		
Design:	plan1		

Project	Weld County, Colorado		
Map System:	Universal Transverse Mercator (US Survey Feet)	System Datum:	Mean Sea Level
Geo Datum:	NAD83 Colorado - HARN		
Map Zone:	Zone 13N (108 W to 102 W)		

Site		Section 04-T04N-R63W			
Site Position:		Northing:	14,650,073.90 usft	Latitude:	40.33740565
From:	Map	Easting:	1,793,302.13 usft	Longitude:	-104.45137138
Position Uncertainty:	0.00 ft	Slot Radius:	13-3/16 "	Grid Convergence:	0.36 °

Well	Silverton 5-04-1L, Surf loc: 2634 FNL 255 FWL Section 04-T04N-R63W					
Well Position	+N/-S	1,483.58 ft	Northing:	14,651,557.20 usft	Latitude:	40.34147949
	+E/-W	-39.99 ft	Easting:	1,793,252.94 usft	Longitude:	-104.45151491
Position Uncertainty		0.00 ft	Wellhead Elevation:		Ground Level:	4,628.00 ft

Wellbore	Original Hole				
Magnetics	Model Name	Sample Date	Declination (°)	Dip Angle (°)	Field Strength (nT)
	HDGM	5/29/2018	8.08	66.90	52,227.90000000

Design	plan1			
Audit Notes:				
Version:	Phase:	PLAN	Tie On Depth:	0.00
Vertical Section:	Depth From (TVD) (ft)	+N/-S (ft)	+E/-W (ft)	Direction (°)
	0.00	0.00	0.00	278.47

Plan Survey Tool Program	Date	5/29/2018		
Depth From (ft)	Depth To (ft)	Survey (Wellbore)	Tool Name	Remarks
1	0.00	16,368.20	plan1 (Original Hole)	

Plan Sections										
Measured Depth (ft)	Inclination (°)	Azimuth (°)	Vertical Depth (ft)	+N/-S (ft)	+E/-W (ft)	Dogleg Rate (°/100ft)	Build Rate (°/100ft)	Turn Rate (°/100ft)	TFO (°)	Target
0.00	0.00	0.00	0.00	0.00	0.00	0.00	0.00	0.00	0.00	
2,000.00	0.00	0.00	2,000.00	0.00	0.00	0.00	0.00	0.00	0.00	
3,092.82	21.86	354.46	3,066.51	204.96	-19.89	2.00	2.00	0.00	354.46	
6,069.16	21.86	354.46	5,828.91	1,307.82	-126.90	0.00	0.00	0.00	0.00	
6,948.68	90.00	269.97	6,342.00	1,512.37	-699.60	10.00	7.75	-9.61	-84.88	Silverton 5-04-1L LP
16,368.20	90.00	269.97	6,342.00	1,507.24	-10,119.12	0.00	0.00	0.00	0.00	Silverton 5-04-1L BHL

Database:	DB_Aug0116_LT_v14	Local Co-ordinate Reference:	Well Silverton 5-04-1L
Company:	Confluence Resources	TVD Reference:	RKB=4628+24 @ 4652.00ft
Project:	Weld County, Colorado	MD Reference:	RKB=4628+24 @ 4652.00ft
Site:	Section 04-T04N-R63W	North Reference:	True
Well:	Silverton 5-04-1L	Survey Calculation Method:	Minimum Curvature
Wellbore:	Original Hole		
Design:	plan1		

Planned Survey									
Measured Depth (ft)	Inclination (°)	Azimuth (°)	Vertical Depth (ft)	+N/-S (ft)	+E/-W (ft)	Vertical Section (ft)	Dogleg Rate (°/100ft)	Build Rate (°/100ft)	Turn Rate (°/100ft)
0.00	0.00	0.00	0.00	0.00	0.00	0.00	0.00	0.00	0.00
100.00	0.00	0.00	100.00	0.00	0.00	0.00	0.00	0.00	0.00
200.00	0.00	0.00	200.00	0.00	0.00	0.00	0.00	0.00	0.00
300.00	0.00	0.00	300.00	0.00	0.00	0.00	0.00	0.00	0.00
400.00	0.00	0.00	400.00	0.00	0.00	0.00	0.00	0.00	0.00
500.00	0.00	0.00	500.00	0.00	0.00	0.00	0.00	0.00	0.00
600.00	0.00	0.00	600.00	0.00	0.00	0.00	0.00	0.00	0.00
700.00	0.00	0.00	700.00	0.00	0.00	0.00	0.00	0.00	0.00
800.00	0.00	0.00	800.00	0.00	0.00	0.00	0.00	0.00	0.00
900.00	0.00	0.00	900.00	0.00	0.00	0.00	0.00	0.00	0.00
1,000.00	0.00	0.00	1,000.00	0.00	0.00	0.00	0.00	0.00	0.00
1,100.00	0.00	0.00	1,100.00	0.00	0.00	0.00	0.00	0.00	0.00
1,200.00	0.00	0.00	1,200.00	0.00	0.00	0.00	0.00	0.00	0.00
1,300.00	0.00	0.00	1,300.00	0.00	0.00	0.00	0.00	0.00	0.00
1,400.00	0.00	0.00	1,400.00	0.00	0.00	0.00	0.00	0.00	0.00
1,500.00	0.00	0.00	1,500.00	0.00	0.00	0.00	0.00	0.00	0.00
1,600.00	0.00	0.00	1,600.00	0.00	0.00	0.00	0.00	0.00	0.00
1,700.00	0.00	0.00	1,700.00	0.00	0.00	0.00	0.00	0.00	0.00
1,800.00	0.00	0.00	1,800.00	0.00	0.00	0.00	0.00	0.00	0.00
1,900.00	0.00	0.00	1,900.00	0.00	0.00	0.00	0.00	0.00	0.00
2,000.00	0.00	0.00	2,000.00	0.00	0.00	0.00	0.00	0.00	0.00
KOP Begin 2°/100' build									
2,100.00	2.00	354.46	2,099.98	1.74	-0.17	0.42	2.00	2.00	0.00
2,200.00	4.00	354.46	2,199.84	6.95	-0.67	1.69	2.00	2.00	0.00
2,300.00	6.00	354.46	2,299.45	15.62	-1.52	3.80	2.00	2.00	0.00
2,400.00	8.00	354.46	2,398.70	27.75	-2.69	6.75	2.00	2.00	0.00
2,500.00	10.00	354.46	2,497.47	43.32	-4.20	10.54	2.00	2.00	0.00
2,600.00	12.00	354.46	2,595.62	62.31	-6.05	15.16	2.00	2.00	0.00
2,700.00	14.00	354.46	2,693.06	84.70	-8.22	20.61	2.00	2.00	0.00
2,800.00	16.00	354.46	2,789.64	110.46	-10.72	26.87	2.00	2.00	0.00
2,900.00	18.00	354.46	2,885.27	139.56	-13.54	33.95	2.00	2.00	0.00
3,000.00	20.00	354.46	2,979.82	171.96	-16.69	41.84	2.00	2.00	0.00
3,092.82	21.86	354.46	3,066.51	204.96	-19.89	49.87	2.00	2.00	0.00
Begin 21.86° tangent section									
3,100.00	21.86	354.46	3,073.17	207.62	-20.15	50.51	0.00	0.00	0.00
3,200.00	21.86	354.46	3,165.98	244.67	-23.74	59.53	0.00	0.00	0.00
3,300.00	21.86	354.46	3,258.80	281.73	-27.34	68.54	0.00	0.00	0.00
3,400.00	21.86	354.46	3,351.61	318.78	-30.93	77.56	0.00	0.00	0.00
3,500.00	21.86	354.46	3,444.42	355.84	-34.53	86.57	0.00	0.00	0.00
3,600.00	21.86	354.46	3,537.23	392.89	-38.12	95.59	0.00	0.00	0.00
3,700.00	21.86	354.46	3,630.04	429.95	-41.72	104.60	0.00	0.00	0.00
3,800.00	21.86	354.46	3,722.86	467.00	-45.31	113.62	0.00	0.00	0.00
3,900.00	21.86	354.46	3,815.67	504.05	-48.91	122.63	0.00	0.00	0.00
4,000.00	21.86	354.46	3,908.48	541.11	-52.50	131.65	0.00	0.00	0.00
4,100.00	21.86	354.46	4,001.29	578.16	-56.10	140.67	0.00	0.00	0.00
4,200.00	21.86	354.46	4,094.10	615.22	-59.70	149.68	0.00	0.00	0.00
4,300.00	21.86	354.46	4,186.92	652.27	-63.29	158.70	0.00	0.00	0.00
4,400.00	21.86	354.46	4,279.73	689.33	-66.89	167.71	0.00	0.00	0.00
4,500.00	21.86	354.46	4,372.54	726.38	-70.48	176.73	0.00	0.00	0.00
4,600.00	21.86	354.46	4,465.35	763.43	-74.08	185.74	0.00	0.00	0.00
4,700.00	21.86	354.46	4,558.16	800.49	-77.67	194.76	0.00	0.00	0.00
4,800.00	21.86	354.46	4,650.97	837.54	-81.27	203.77	0.00	0.00	0.00
4,900.00	21.86	354.46	4,743.79	874.60	-84.86	212.79	0.00	0.00	0.00

Database:	DB_Aug0116_LT_v14	Local Co-ordinate Reference:	Well Silverton 5-04-1L
Company:	Confluence Resources	TVD Reference:	RKB=4628+24 @ 4652.00ft
Project:	Weld County, Colorado	MD Reference:	RKB=4628+24 @ 4652.00ft
Site:	Section 04-T04N-R63W	North Reference:	True
Well:	Silverton 5-04-1L	Survey Calculation Method:	Minimum Curvature
Wellbore:	Original Hole		
Design:	plan1		

Planned Survey									
Measured Depth (ft)	Inclination (°)	Azimuth (°)	Vertical Depth (ft)	+N/-S (ft)	+E/-W (ft)	Vertical Section (ft)	Dogleg Rate (°/100ft)	Build Rate (°/100ft)	Turn Rate (°/100ft)
5,000.00	21.86	354.46	4,836.60	911.65	-88.46	221.80	0.00	0.00	0.00
5,100.00	21.86	354.46	4,929.41	948.71	-92.05	230.82	0.00	0.00	0.00
5,200.00	21.86	354.46	5,022.22	985.76	-95.65	239.83	0.00	0.00	0.00
5,300.00	21.86	354.46	5,115.03	1,022.81	-99.24	248.85	0.00	0.00	0.00
5,400.00	21.86	354.46	5,207.85	1,059.87	-102.84	257.86	0.00	0.00	0.00
5,500.00	21.86	354.46	5,300.66	1,096.92	-106.44	266.88	0.00	0.00	0.00
5,600.00	21.86	354.46	5,393.47	1,133.98	-110.03	275.89	0.00	0.00	0.00
5,700.00	21.86	354.46	5,486.28	1,171.03	-113.63	284.91	0.00	0.00	0.00
5,800.00	21.86	354.46	5,579.09	1,208.09	-117.22	293.92	0.00	0.00	0.00
5,900.00	21.86	354.46	5,671.91	1,245.14	-120.82	302.94	0.00	0.00	0.00
6,000.00	21.86	354.46	5,764.72	1,282.19	-124.41	311.95	0.00	0.00	0.00
6,069.16	21.86	354.46	5,828.91	1,307.82	-126.90	318.19	0.00	0.00	0.00
Begin 10°/100' build/turn									
6,100.00	22.33	346.35	5,857.49	1,319.23	-128.84	321.79	10.00	1.55	-26.29
6,200.00	26.30	323.87	5,948.80	1,355.68	-146.43	344.55	10.00	3.96	-22.49
6,300.00	32.78	308.29	6,035.88	1,390.43	-180.82	383.69	10.00	6.48	-15.57
6,400.00	40.58	297.76	6,116.10	1,422.43	-230.97	438.01	10.00	7.80	-10.54
6,500.00	49.07	290.23	6,187.02	1,450.71	-295.36	505.87	10.00	8.49	-7.53
6,600.00	57.93	284.46	6,246.47	1,474.41	-372.03	585.19	10.00	8.87	-5.77
6,700.00	67.01	279.72	6,292.66	1,492.80	-458.65	673.57	10.00	9.08	-4.73
6,800.00	76.21	275.59	6,324.19	1,505.34	-552.59	768.33	10.00	9.20	-4.13
6,900.00	85.48	271.78	6,340.08	1,511.63	-650.98	866.58	10.00	9.27	-3.81
6,948.68	90.00	269.97	6,342.00	1,512.37	-699.60	914.78	10.00	9.29	-3.72
LP Begin 90° lateral									
7,000.00	90.00	269.97	6,342.00	1,512.34	-750.93	965.54	0.00	0.00	0.00
7,100.00	90.00	269.97	6,342.00	1,512.29	-850.93	1,064.44	0.00	0.00	0.00
7,200.00	90.00	269.97	6,342.00	1,512.23	-950.93	1,163.34	0.00	0.00	0.00
7,300.00	90.00	269.97	6,342.00	1,512.18	-1,050.93	1,262.24	0.00	0.00	0.00
7,400.00	90.00	269.97	6,342.00	1,512.12	-1,150.93	1,361.14	0.00	0.00	0.00
7,500.00	90.00	269.97	6,342.00	1,512.07	-1,250.93	1,460.04	0.00	0.00	0.00
7,600.00	90.00	269.97	6,342.00	1,512.01	-1,350.93	1,558.94	0.00	0.00	0.00
7,700.00	90.00	269.97	6,342.00	1,511.96	-1,450.93	1,657.84	0.00	0.00	0.00
7,800.00	90.00	269.97	6,342.00	1,511.90	-1,550.93	1,756.74	0.00	0.00	0.00
7,900.00	90.00	269.97	6,342.00	1,511.85	-1,650.93	1,855.64	0.00	0.00	0.00
8,000.00	90.00	269.97	6,342.00	1,511.80	-1,750.93	1,954.55	0.00	0.00	0.00
8,100.00	90.00	269.97	6,342.00	1,511.74	-1,850.93	2,053.45	0.00	0.00	0.00
8,200.00	90.00	269.97	6,342.00	1,511.69	-1,950.93	2,152.35	0.00	0.00	0.00
8,300.00	90.00	269.97	6,342.00	1,511.63	-2,050.93	2,251.25	0.00	0.00	0.00
8,400.00	90.00	269.97	6,342.00	1,511.58	-2,150.93	2,350.15	0.00	0.00	0.00
8,500.00	90.00	269.97	6,342.00	1,511.52	-2,250.93	2,449.05	0.00	0.00	0.00
8,600.00	90.00	269.97	6,342.00	1,511.47	-2,350.93	2,547.95	0.00	0.00	0.00
8,700.00	90.00	269.97	6,342.00	1,511.42	-2,450.93	2,646.85	0.00	0.00	0.00
8,800.00	90.00	269.97	6,342.00	1,511.36	-2,550.93	2,745.75	0.00	0.00	0.00
8,900.00	90.00	269.97	6,342.00	1,511.31	-2,650.93	2,844.65	0.00	0.00	0.00
9,000.00	90.00	269.97	6,342.00	1,511.25	-2,750.93	2,943.55	0.00	0.00	0.00
9,100.00	90.00	269.97	6,342.00	1,511.20	-2,850.93	3,042.45	0.00	0.00	0.00
9,200.00	90.00	269.97	6,342.00	1,511.14	-2,950.93	3,141.35	0.00	0.00	0.00
9,300.00	90.00	269.97	6,342.00	1,511.09	-3,050.93	3,240.26	0.00	0.00	0.00
9,400.00	90.00	269.97	6,342.00	1,511.03	-3,150.93	3,339.16	0.00	0.00	0.00
9,500.00	90.00	269.97	6,342.00	1,510.98	-3,250.93	3,438.06	0.00	0.00	0.00
9,600.00	90.00	269.97	6,342.00	1,510.93	-3,350.93	3,536.96	0.00	0.00	0.00
9,700.00	90.00	269.97	6,342.00	1,510.87	-3,450.93	3,635.86	0.00	0.00	0.00
9,800.00	90.00	269.97	6,342.00	1,510.82	-3,550.93	3,734.76	0.00	0.00	0.00
9,900.00	90.00	269.97	6,342.00	1,510.76	-3,650.93	3,833.66	0.00	0.00	0.00

Database:	DB_Aug0116_LT_v14	Local Co-ordinate Reference:	Well Silverton 5-04-1L
Company:	Confluence Resources	TVD Reference:	RKB=4628+24 @ 4652.00ft
Project:	Weld County, Colorado	MD Reference:	RKB=4628+24 @ 4652.00ft
Site:	Section 04-T04N-R63W	North Reference:	True
Well:	Silverton 5-04-1L	Survey Calculation Method:	Minimum Curvature
Wellbore:	Original Hole		
Design:	plan1		

Planned Survey									
Measured Depth (ft)	Inclination (°)	Azimuth (°)	Vertical Depth (ft)	+N/-S (ft)	+E/-W (ft)	Vertical Section (ft)	Dogleg Rate (°/100ft)	Build Rate (°/100ft)	Turn Rate (°/100ft)
10,000.00	90.00	269.97	6,342.00	1,510.71	-3,750.93	3,932.56	0.00	0.00	0.00
10,100.00	90.00	269.97	6,342.00	1,510.65	-3,850.93	4,031.46	0.00	0.00	0.00
10,200.00	90.00	269.97	6,342.00	1,510.60	-3,950.93	4,130.36	0.00	0.00	0.00
10,300.00	90.00	269.97	6,342.00	1,510.54	-4,050.93	4,229.26	0.00	0.00	0.00
10,400.00	90.00	269.97	6,342.00	1,510.49	-4,150.93	4,328.16	0.00	0.00	0.00
10,500.00	90.00	269.97	6,342.00	1,510.44	-4,250.93	4,427.07	0.00	0.00	0.00
10,600.00	90.00	269.97	6,342.00	1,510.38	-4,350.93	4,525.97	0.00	0.00	0.00
10,700.00	90.00	269.97	6,342.00	1,510.33	-4,450.93	4,624.87	0.00	0.00	0.00
10,800.00	90.00	269.97	6,342.00	1,510.27	-4,550.93	4,723.77	0.00	0.00	0.00
10,900.00	90.00	269.97	6,342.00	1,510.22	-4,650.93	4,822.67	0.00	0.00	0.00
11,000.00	90.00	269.97	6,342.00	1,510.16	-4,750.93	4,921.57	0.00	0.00	0.00
11,100.00	90.00	269.97	6,342.00	1,510.11	-4,850.93	5,020.47	0.00	0.00	0.00
11,200.00	90.00	269.97	6,342.00	1,510.06	-4,950.93	5,119.37	0.00	0.00	0.00
11,300.00	90.00	269.97	6,342.00	1,510.00	-5,050.93	5,218.27	0.00	0.00	0.00
11,400.00	90.00	269.97	6,342.00	1,509.95	-5,150.93	5,317.17	0.00	0.00	0.00
11,500.00	90.00	269.97	6,342.00	1,509.89	-5,250.93	5,416.07	0.00	0.00	0.00
11,600.00	90.00	269.97	6,342.00	1,509.84	-5,350.93	5,514.97	0.00	0.00	0.00
11,700.00	90.00	269.97	6,342.00	1,509.78	-5,450.93	5,613.87	0.00	0.00	0.00
11,800.00	90.00	269.97	6,342.00	1,509.73	-5,550.93	5,712.78	0.00	0.00	0.00
11,900.00	90.00	269.97	6,342.00	1,509.67	-5,650.93	5,811.68	0.00	0.00	0.00
12,000.00	90.00	269.97	6,342.00	1,509.62	-5,750.93	5,910.58	0.00	0.00	0.00
12,100.00	90.00	269.97	6,342.00	1,509.57	-5,850.93	6,009.48	0.00	0.00	0.00
12,200.00	90.00	269.97	6,342.00	1,509.51	-5,950.93	6,108.38	0.00	0.00	0.00
12,300.00	90.00	269.97	6,342.00	1,509.46	-6,050.93	6,207.28	0.00	0.00	0.00
12,400.00	90.00	269.97	6,342.00	1,509.40	-6,150.93	6,306.18	0.00	0.00	0.00
12,500.00	90.00	269.97	6,342.00	1,509.35	-6,250.93	6,405.08	0.00	0.00	0.00
12,600.00	90.00	269.97	6,342.00	1,509.29	-6,350.93	6,503.98	0.00	0.00	0.00
12,700.00	90.00	269.97	6,342.00	1,509.24	-6,450.93	6,602.88	0.00	0.00	0.00
12,800.00	90.00	269.97	6,342.00	1,509.18	-6,550.93	6,701.78	0.00	0.00	0.00
12,900.00	90.00	269.97	6,342.00	1,509.13	-6,650.93	6,800.68	0.00	0.00	0.00
13,000.00	90.00	269.97	6,342.00	1,509.08	-6,750.93	6,899.58	0.00	0.00	0.00
13,100.00	90.00	269.97	6,342.00	1,509.02	-6,850.93	6,998.49	0.00	0.00	0.00
13,200.00	90.00	269.97	6,342.00	1,508.97	-6,950.93	7,097.39	0.00	0.00	0.00
13,300.00	90.00	269.97	6,342.00	1,508.91	-7,050.93	7,196.29	0.00	0.00	0.00
13,400.00	90.00	269.97	6,342.00	1,508.86	-7,150.93	7,295.19	0.00	0.00	0.00
13,500.00	90.00	269.97	6,342.00	1,508.80	-7,250.93	7,394.09	0.00	0.00	0.00
13,600.00	90.00	269.97	6,342.00	1,508.75	-7,350.93	7,492.99	0.00	0.00	0.00
13,700.00	90.00	269.97	6,342.00	1,508.70	-7,450.93	7,591.89	0.00	0.00	0.00
13,800.00	90.00	269.97	6,342.00	1,508.64	-7,550.93	7,690.79	0.00	0.00	0.00
13,900.00	90.00	269.97	6,342.00	1,508.59	-7,650.93	7,789.69	0.00	0.00	0.00
14,000.00	90.00	269.97	6,342.00	1,508.53	-7,750.93	7,888.59	0.00	0.00	0.00
14,100.00	90.00	269.97	6,342.00	1,508.48	-7,850.93	7,987.49	0.00	0.00	0.00
14,200.00	90.00	269.97	6,342.00	1,508.42	-7,950.93	8,086.39	0.00	0.00	0.00
14,300.00	90.00	269.97	6,342.00	1,508.37	-8,050.93	8,185.30	0.00	0.00	0.00
14,400.00	90.00	269.97	6,342.00	1,508.31	-8,150.93	8,284.20	0.00	0.00	0.00
14,500.00	90.00	269.97	6,342.00	1,508.26	-8,250.93	8,383.10	0.00	0.00	0.00
14,600.00	90.00	269.97	6,342.00	1,508.21	-8,350.93	8,482.00	0.00	0.00	0.00
14,700.00	90.00	269.97	6,342.00	1,508.15	-8,450.93	8,580.90	0.00	0.00	0.00
14,800.00	90.00	269.97	6,342.00	1,508.10	-8,550.93	8,679.80	0.00	0.00	0.00
14,900.00	90.00	269.97	6,342.00	1,508.04	-8,650.93	8,778.70	0.00	0.00	0.00
15,000.00	90.00	269.97	6,342.00	1,507.99	-8,750.93	8,877.60	0.00	0.00	0.00
15,100.00	90.00	269.97	6,342.00	1,507.93	-8,850.93	8,976.50	0.00	0.00	0.00
15,200.00	90.00	269.97	6,342.00	1,507.88	-8,950.93	9,075.40	0.00	0.00	0.00
15,300.00	90.00	269.97	6,342.00	1,507.82	-9,050.93	9,174.30	0.00	0.00	0.00

Database:	DB_Aug0116_LT_v14	Local Co-ordinate Reference:	Well Silverton 5-04-1L
Company:	Confluence Resources	TVD Reference:	RKB=4628+24 @ 4652.00ft
Project:	Weld County, Colorado	MD Reference:	RKB=4628+24 @ 4652.00ft
Site:	Section 04-T04N-R63W	North Reference:	True
Well:	Silverton 5-04-1L	Survey Calculation Method:	Minimum Curvature
Wellbore:	Original Hole		
Design:	plan1		

Planned Survey									
Measured Depth (ft)	Inclination (°)	Azimuth (°)	Vertical Depth (ft)	+N/-S (ft)	+E/-W (ft)	Vertical Section (ft)	Dogleg Rate (°/100ft)	Build Rate (°/100ft)	Turn Rate (°/100ft)
15,400.00	90.00	269.97	6,342.00	1,507.77	-9,150.93	9,273.20	0.00	0.00	0.00
15,500.00	90.00	269.97	6,342.00	1,507.72	-9,250.93	9,372.10	0.00	0.00	0.00
15,600.00	90.00	269.97	6,342.00	1,507.66	-9,350.93	9,471.01	0.00	0.00	0.00
15,700.00	90.00	269.97	6,342.00	1,507.61	-9,450.93	9,569.91	0.00	0.00	0.00
15,800.00	90.00	269.97	6,342.00	1,507.55	-9,550.93	9,668.81	0.00	0.00	0.00
15,900.00	90.00	269.97	6,342.00	1,507.50	-9,650.93	9,767.71	0.00	0.00	0.00
16,000.00	90.00	269.97	6,342.00	1,507.44	-9,750.93	9,866.61	0.00	0.00	0.00
16,100.00	90.00	269.97	6,342.00	1,507.39	-9,850.93	9,965.51	0.00	0.00	0.00
16,200.00	90.00	269.97	6,342.00	1,507.34	-9,950.93	10,064.41	0.00	0.00	0.00
16,300.00	90.00	269.97	6,342.00	1,507.28	-10,050.93	10,163.31	0.00	0.00	0.00
16,368.20	90.00	269.97	6,342.00	1,507.24	-10,119.12	10,230.76	0.00	0.00	0.00
PBHL/TD 16368.20 MD 6342.00 TVD									

Design Targets									
Target Name - hit/miss target - Shape	Dip Angle (°)	Dip Dir. (°)	TVD (ft)	+N/-S (ft)	+E/-W (ft)	Northing (usft)	Easting (usft)	Latitude	Longitude
Silverton 5-04-1L SL 263 - plan hits target center - Point	0.00	0.00	24.00	0.00	0.00	14,651,557.20	1,793,252.94	40.34147949	-104.45151491
Silverton 5-04-1L BHL 1' - plan hits target center - Point	0.00	0.00	6,342.00	1,507.24	-10,119.12	14,653,001.70	1,783,124.69	40.34561261	-104.48783083
Silverton 5-04-1L LP 112 - plan hits target center - Point	0.00	0.00	6,342.00	1,512.37	-699.60	14,653,065.20	1,792,543.98	40.34563235	-104.45402567

Plan Annotations				
Measured Depth (ft)	Vertical Depth (ft)	Local Coordinates		Comment
		+N/-S (ft)	+E/-W (ft)	
2,000.00	2,000.00	0.00	0.00	KOP Begin 2°/100' build
3,092.82	3,066.51	204.96	-19.89	Begin 21.86° tangent section
6,069.16	5,828.91	1,307.82	-126.90	Begin 10°/100' build/turn
6,948.68	6,342.00	1,512.37	-699.60	LP Begin 90° lateral
16,368.20	6,342.00	1,507.24	-10,119.12	PBHL/TD 16368.20 MD 6342.00 TVD