

Well: Silverton 5-07-1L  
Site: Section 04-T04N-R63W  
Project: Weld County, Colorado  
Wellbore: Original Hole  
Design: plan1

#### Section Details

| Sec | MD       | Inc   | Azi    | TVD     | +N/-S  | +E/-W     | Dleg  | Vsect    | Annotation                      |
|-----|----------|-------|--------|---------|--------|-----------|-------|----------|---------------------------------|
| 1   | 0.00     | 0.00  | 0.00   | 0.00    | 0.00   | 0.00      | 0.00  | 0.00     |                                 |
| 2   | 2000.00  | 0.00  | 0.00   | 2000.00 | 0.00   | 0.00      | 0.00  | 0.00     | KOP Begin 2°/100' build         |
| 3   | 2688.08  | 13.76 | 350.77 | 2681.48 | 81.17  | -13.19    | 2.00  | 20.81    | Begin 13.76° tangent section    |
| 4   | 5911.39  | 13.76 | 350.77 | 5812.27 | 838.01 | -136.19   | 0.00  | 214.88   | Begin 10°/100' build/turn       |
| 5   | 6789.60  | 90.00 | 269.97 | 6348.00 | 967.21 | -708.80   | 10.00 | 797.15   | LP Begin 90° lateral            |
| 6   | 16201.19 | 90.00 | 269.97 | 6348.00 | 962.04 | -10120.39 | 0.00  | 10166.02 | PBHL/TD 16201.19 MD 6348.00 TVD |

#### DESIGN TARGET DETAILS

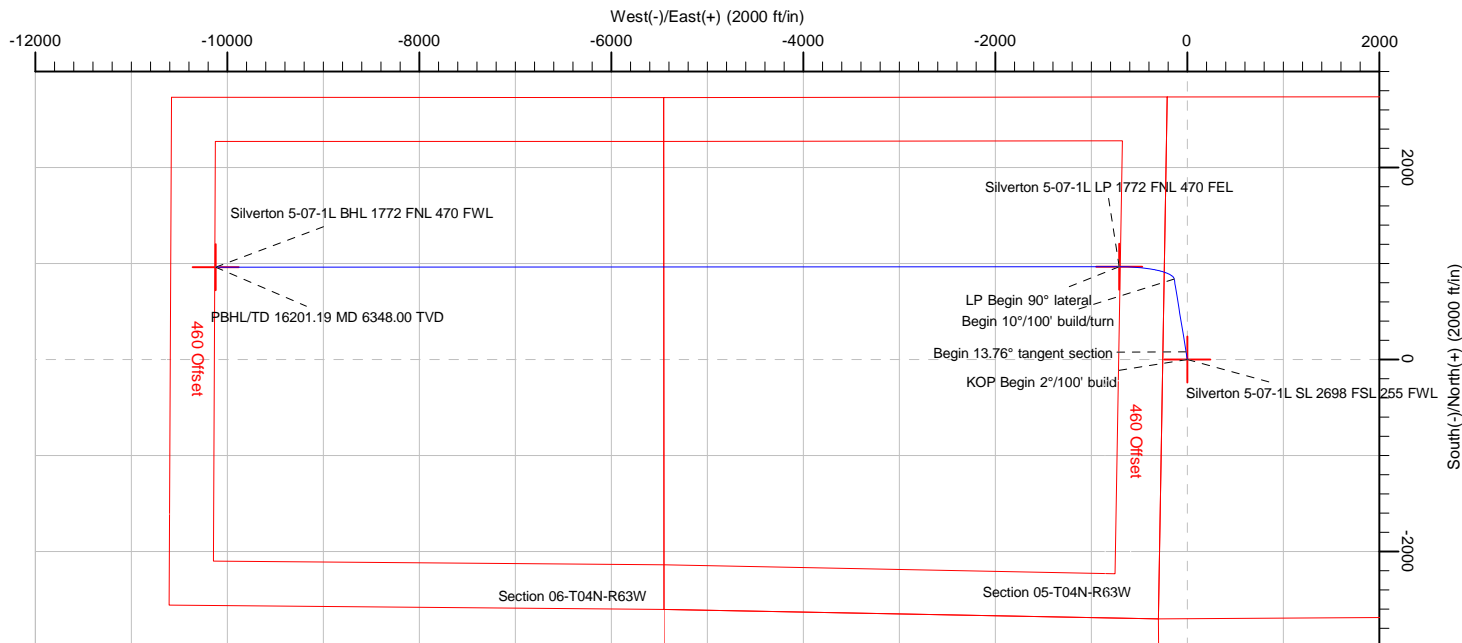
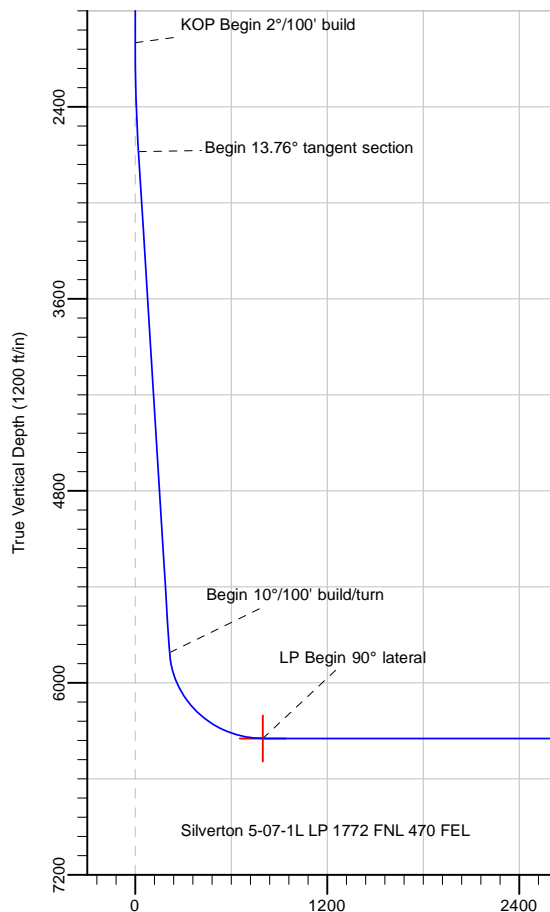
| Name                                   | TVD     | +N/-S  | +E/-W     | Northing    | Easting    | Latitude    | Longitude     |
|--|---------|--------|-----------|-------------|------------|-------------|---------------|
| Silverton 5-07-1L SL 2698 FSL 255 FWL  | 24.00   | 0.00   | 0.00      | 14651451.40 | 1793251.82 | 40.34118900 | -104.45152128 |
| Silverton 5-07-1L BHL 1772 FNL 470 FWL | 6348.00 | 962.04 | -10120.39 | 14652350.70 | 1783125.68 | 40.34382501 | -104.48784081 |
| Silverton 5-07-1L LP 1772 FNL 470 FEL  | 6348.00 | 967.21 | -708.80   | 14652414.20 | 1792537.04 | 40.34384489 | -104.45406498 |

|   |            |             |               |
|---|------------|-------------|---------------|
| Silverton 5-07-1L                               |            |             |               |
| Surf loc: 2698 FSL 255 FWL Section 04-T04N-R63W |            |             |               |
| NAD83 Colorado - HARN                           |            |             |               |
| Universal Transverse Mercator (US Survey Feet)  |            |             |               |
| Zone 13N (108 W to 102 W)                       |            |             |               |
| RKB=4629+24 @ 4653.00ft                         |            |             |               |
| Northing  | Easting    | Latitude    | Longitude     |
| 14651451.40                                     | 1793251.82 | 40.34118900 | -104.45152128 |



Azimuths to True North  
Magnetic North: 8.08°

Magnetic Field  
Strength: 52227.9snT  
Dip Angle: 66.90°  
Date: 5/29/2018  
Model: HDGM



|                  |                       |                                     |                         |
|------------------|-----------------------|-------------------------------------|-------------------------|
| <b>Database:</b> | DB_Aug0116_LT_v14     | <b>Local Co-ordinate Reference:</b> | Well Silverton 5-07-1L  |
| <b>Company:</b>  | Confluence Resources  | <b>TVD Reference:</b>               | RKB=4629+24 @ 4653.00ft |
| <b>Project:</b>  | Weld County, Colorado | <b>MD Reference:</b>                | RKB=4629+24 @ 4653.00ft |
| <b>Site:</b>     | Section 04-T04N-R63W  | <b>North Reference:</b>             | True                    |
| <b>Well:</b>     | Silverton 5-07-1L     | <b>Survey Calculation Method:</b>   | Minimum Curvature       |
| <b>Wellbore:</b> | Original Hole         |                                     |                         |
| <b>Design:</b>   | plan1                 |                                     |                         |

|                    |  |                      |                |
|--------------------|--|----------------------|----------------|
| <b>Project</b>     | Weld County, Colorado                          |                      |                |
| <b>Map System:</b> | Universal Transverse Mercator (US Survey Feet) | <b>System Datum:</b> | Mean Sea Level |
| <b>Geo Datum:</b>  | NAD83 Colorado - HARN                          |                      |                |
| <b>Map Zone:</b>   | Zone 13N (108 W to 102 W)                      |                      |                |

|                       |         |                      |                    |                   |               |
|-----------------------|---------|----------------------|--------------------|-------------------|---------------|
| Site                  |         | Section 04-T04N-R63W |                    |                   |               |
| Site Position:        |         | Northing:            | 14,650,073.90 usft | Latitude:         | 40.33740565   |
| From:                 | Map     | Easting:             | 1,793,302.13 usft  | Longitude:        | -104.45137138 |
| Position Uncertainty: | 0.00 ft | Slot Radius:         | 13-3/16 "          | Grid Convergence: | 0.36 °        |

|                      |  |         |                     |                    |               |               |
|----------------------|--|---------|---------------------|--------------------|---------------|---------------|
| Well                 | Silverton 5-07-1L, Surf loc: 2698 FSL 255 FWL Section 04-T04N-R63W |         |                     |                    |               |               |
| Well Position        | +N/-S  | 0.00 ft | Northing:           | 14,651,451.40 usft | Latitude:     | 40.34118899   |
|                      | +E/-W  | 0.00 ft | Easting:            | 1,793,251.82 usft  | Longitude:    | -104.45152128 |
| Position Uncertainty |  | 0.00 ft | Wellhead Elevation: |                    | Ground Level: | 4,629.00 ft   |

|                  |                   |                    |                        |                      |                            |
|------------------|-------------------|--------------------|------------------------|----------------------|----------------------------|
| <b>Wellbore</b>  | Original Hole     |                    |                        |                      |                            |
| <b>Magnetics</b> | <b>Model Name</b> | <b>Sample Date</b> | <b>Declination (°)</b> | <b>Dip Angle (°)</b> | <b>Field Strength (nT)</b> |
|                  | HDGM              | 5/29/2018          | 8.08                   | 66.90                | 52,227.90000000            |

|                          |                              |                   |                      |                      |
|--------------------------|------------------------------|-------------------|----------------------|----------------------|
| <b>Design</b>            | plan1                        |                   |                      |                      |
| <b>Audit Notes:</b>      |                              |                   |                      |                      |
| <b>Version:</b>          | <b>Phase:</b>                | PLAN              | <b>Tie On Depth:</b> | 0.00                 |
| <b>Vertical Section:</b> | <b>Depth From (TVD) (ft)</b> | <b>+N/-S (ft)</b> | <b>+E/-W (ft)</b>    | <b>Direction (°)</b> |
|                          | 0.00                         | 0.00              | 0.00                 | 275.43               |

|                                 |                      |                                 |                  |                |
|---------------------------------|----------------------|---------------------------------|------------------|----------------|
| <b>Plan Survey Tool Program</b> | <b>Date</b>          | 5/29/2018                       |                  |                |
| <b>Depth From (ft)</b>          | <b>Depth To (ft)</b> | <b>Survey (Wellbore)</b>        | <b>Tool Name</b> | <b>Remarks</b> |
| 1                               | 0.00                 | 16,201.19 plan1 (Original Hole) |                  |                |

|                            |                        |                    |                            |                   |                   |                              |                             |                            |                |                       |
|----------------------------|------------------------|--------------------|----------------------------|-------------------|-------------------|------------------------------|-----------------------------|----------------------------|----------------|-----------------------|
| <b>Plan Sections</b>       |                        |                    |                            |                   |                   |                              |                             |                            |                |                       |
| <b>Measured Depth (ft)</b> | <b>Inclination (°)</b> | <b>Azimuth (°)</b> | <b>Vertical Depth (ft)</b> | <b>+N/-S (ft)</b> | <b>+E/-W (ft)</b> | <b>Dogleg Rate (°/100ft)</b> | <b>Build Rate (°/100ft)</b> | <b>Turn Rate (°/100ft)</b> | <b>TFO (°)</b> | <b>Target</b>         |
| 0.00                       | 0.00                   | 0.00               | 0.00                       | 0.00              | 0.00              | 0.00                         | 0.00                        | 0.00                       | 0.00           |                       |
| 2,000.00                   | 0.00                   | 0.00               | 2,000.00                   | 0.00              | 0.00              | 0.00                         | 0.00                        | 0.00                       | 0.00           |                       |
| 2,688.08                   | 13.76                  | 350.77             | 2,681.48                   | 81.17             | -13.19            | 2.00                         | 2.00                        | 0.00                       | 350.77         |                       |
| 5,911.39                   | 13.76                  | 350.77             | 5,812.27                   | 838.01            | -136.19           | 0.00                         | 0.00                        | 0.00                       | 0.00           |                       |
| 6,789.60                   | 90.00                  | 269.97             | 6,348.00                   | 967.21            | -708.80           | 10.00                        | 8.68                        | -9.20                      | -81.06         | Silverton 5-07-1L LP  |
| 16,201.19                  | 90.00                  | 269.97             | 6,348.00                   | 962.04            | -10,120.39        | 0.00                         | 0.00                        | 0.00                       | 0.00           | Silverton 5-07-1L BHL |

|                  |                       |                                     |                         |
|------------------|-----------------------|-------------------------------------|-------------------------|
| <b>Database:</b> | DB_Aug0116_LT_v14     | <b>Local Co-ordinate Reference:</b> | Well Silverton 5-07-1L  |
| <b>Company:</b>  | Confluence Resources  | <b>TVD Reference:</b>               | RKB=4629+24 @ 4653.00ft |
| <b>Project:</b>  | Weld County, Colorado | <b>MD Reference:</b>                | RKB=4629+24 @ 4653.00ft |
| <b>Site:</b>     | Section 04-T04N-R63W  | <b>North Reference:</b>             | True                    |
| <b>Well:</b>     | Silverton 5-07-1L     | <b>Survey Calculation Method:</b>   | Minimum Curvature       |
| <b>Wellbore:</b> | Original Hole         |                                     |                         |
| <b>Design:</b>   | plan1                 |                                     |                         |

| Planned Survey                      |                 |             |                     |            |            |                     |                    |             |               |
|-------------------------------------|-----------------|-------------|---------------------|------------|------------|---------------------|--------------------|-------------|---------------|
| Measured Depth (ft)                 | Inclination (°) | Azimuth (°) | Vertical Depth (ft) | +N/-S (ft) | +E/-W (ft) | Map Northing (usft) | Map Easting (usft) | Latitude    | Longitude     |
| 0.00                                | 0.00            | 0.00        | 0.00                | 0.00       | 0.00       | 14,651,451.40       | 1,793,251.82       | 40.34118899 | -104.45152128 |
| 100.00                              | 0.00            | 0.00        | 100.00              | 0.00       | 0.00       | 14,651,451.40       | 1,793,251.82       | 40.34118899 | -104.45152128 |
| 200.00                              | 0.00            | 0.00        | 200.00              | 0.00       | 0.00       | 14,651,451.40       | 1,793,251.82       | 40.34118899 | -104.45152128 |
| 300.00                              | 0.00            | 0.00        | 300.00              | 0.00       | 0.00       | 14,651,451.40       | 1,793,251.82       | 40.34118899 | -104.45152128 |
| 400.00                              | 0.00            | 0.00        | 400.00              | 0.00       | 0.00       | 14,651,451.40       | 1,793,251.82       | 40.34118899 | -104.45152128 |
| 500.00                              | 0.00            | 0.00        | 500.00              | 0.00       | 0.00       | 14,651,451.40       | 1,793,251.82       | 40.34118899 | -104.45152128 |
| 600.00                              | 0.00            | 0.00        | 600.00              | 0.00       | 0.00       | 14,651,451.40       | 1,793,251.82       | 40.34118899 | -104.45152128 |
| 700.00                              | 0.00            | 0.00        | 700.00              | 0.00       | 0.00       | 14,651,451.40       | 1,793,251.82       | 40.34118899 | -104.45152128 |
| 800.00                              | 0.00            | 0.00        | 800.00              | 0.00       | 0.00       | 14,651,451.40       | 1,793,251.82       | 40.34118899 | -104.45152128 |
| 900.00                              | 0.00            | 0.00        | 900.00              | 0.00       | 0.00       | 14,651,451.40       | 1,793,251.82       | 40.34118899 | -104.45152128 |
| 1,000.00                            | 0.00            | 0.00        | 1,000.00            | 0.00       | 0.00       | 14,651,451.40       | 1,793,251.82       | 40.34118899 | -104.45152128 |
| 1,100.00                            | 0.00            | 0.00        | 1,100.00            | 0.00       | 0.00       | 14,651,451.40       | 1,793,251.82       | 40.34118899 | -104.45152128 |
| 1,200.00                            | 0.00            | 0.00        | 1,200.00            | 0.00       | 0.00       | 14,651,451.40       | 1,793,251.82       | 40.34118899 | -104.45152128 |
| 1,300.00                            | 0.00            | 0.00        | 1,300.00            | 0.00       | 0.00       | 14,651,451.40       | 1,793,251.82       | 40.34118899 | -104.45152128 |
| 1,400.00                            | 0.00            | 0.00        | 1,400.00            | 0.00       | 0.00       | 14,651,451.40       | 1,793,251.82       | 40.34118899 | -104.45152128 |
| 1,500.00                            | 0.00            | 0.00        | 1,500.00            | 0.00       | 0.00       | 14,651,451.40       | 1,793,251.82       | 40.34118899 | -104.45152128 |
| 1,600.00                            | 0.00            | 0.00        | 1,600.00            | 0.00       | 0.00       | 14,651,451.40       | 1,793,251.82       | 40.34118899 | -104.45152128 |
| 1,700.00                            | 0.00            | 0.00        | 1,700.00            | 0.00       | 0.00       | 14,651,451.40       | 1,793,251.82       | 40.34118899 | -104.45152128 |
| 1,800.00                            | 0.00            | 0.00        | 1,800.00            | 0.00       | 0.00       | 14,651,451.40       | 1,793,251.82       | 40.34118899 | -104.45152128 |
| 1,900.00                            | 0.00            | 0.00        | 1,900.00            | 0.00       | 0.00       | 14,651,451.40       | 1,793,251.82       | 40.34118899 | -104.45152128 |
| 2,000.00                            | 0.00            | 0.00        | 2,000.00            | 0.00       | 0.00       | 14,651,451.40       | 1,793,251.82       | 40.34118899 | -104.45152128 |
| <b>KOP Begin 2°/100' build</b>      |                 |             |                     |            |            |                     |                    |             |               |
| 2,100.00                            | 2.00            | 350.77      | 2,099.98            | 1.72       | -0.28      | 14,651,453.12       | 1,793,251.53       | 40.34119372 | -104.45152229 |
| 2,200.00                            | 4.00            | 350.77      | 2,199.84            | 6.89       | -1.12      | 14,651,458.28       | 1,793,250.66       | 40.34120791 | -104.45152530 |
| 2,300.00                            | 6.00            | 350.77      | 2,299.45            | 15.49      | -2.52      | 14,651,466.87       | 1,793,249.21       | 40.34123153 | -104.45153032 |
| 2,400.00                            | 8.00            | 350.77      | 2,398.70            | 27.52      | -4.47      | 14,651,478.89       | 1,793,247.18       | 40.34126456 | -104.45153733 |
| 2,500.00                            | 10.00           | 350.77      | 2,497.47            | 42.96      | -6.98      | 14,651,494.31       | 1,793,244.57       | 40.34130696 | -104.45154634 |
| 2,600.00                            | 12.00           | 350.77      | 2,595.62            | 61.79      | -10.04     | 14,651,513.13       | 1,793,241.40       | 40.34135867 | -104.45155732 |
| 2,688.08                            | 13.76           | 350.77      | 2,681.48            | 81.17      | -13.19     | 14,651,532.49       | 1,793,238.13       | 40.34141188 | -104.45156862 |
| <b>Begin 13.76° tangent section</b> |                 |             |                     |            |            |                     |                    |             |               |
| 2,700.00                            | 13.76           | 350.77      | 2,693.06            | 83.97      | -13.65     | 14,651,535.28       | 1,793,237.65       | 40.34141957 | -104.45157026 |
| 2,800.00                            | 13.76           | 350.77      | 2,790.19            | 107.45     | -17.46     | 14,651,558.74       | 1,793,233.69       | 40.34148405 | -104.45158395 |
| 2,900.00                            | 13.76           | 350.77      | 2,887.32            | 130.93     | -21.28     | 14,651,582.19       | 1,793,229.73       | 40.34154852 | -104.45159764 |
| 3,000.00                            | 13.76           | 350.77      | 2,984.45            | 154.41     | -25.09     | 14,651,605.65       | 1,793,225.77       | 40.34161300 | -104.45161134 |
| 3,100.00                            | 13.76           | 350.77      | 3,081.58            | 177.89     | -28.91     | 14,651,629.11       | 1,793,221.81       | 40.34167747 | -104.45162503 |
| 3,200.00                            | 13.76           | 350.77      | 3,178.71            | 201.37     | -32.73     | 14,651,652.56       | 1,793,217.85       | 40.34174195 | -104.45163872 |
| 3,300.00                            | 13.76           | 350.77      | 3,275.84            | 224.85     | -36.54     | 14,651,676.02       | 1,793,213.89       | 40.34180642 | -104.45165242 |
| 3,400.00                            | 13.76           | 350.77      | 3,372.97            | 248.33     | -40.36     | 14,651,699.47       | 1,793,209.93       | 40.34187090 | -104.45166611 |
| 3,500.00                            | 13.76           | 350.77      | 3,470.10            | 271.81     | -44.17     | 14,651,722.93       | 1,793,205.96       | 40.34193537 | -104.45167980 |
| 3,600.00                            | 13.76           | 350.77      | 3,567.23            | 295.29     | -47.99     | 14,651,746.39       | 1,793,202.00       | 40.34199985 | -104.45169350 |
| 3,700.00                            | 13.76           | 350.77      | 3,664.36            | 318.77     | -51.80     | 14,651,769.84       | 1,793,198.04       | 40.34206432 | -104.45170719 |
| 3,800.00                            | 13.76           | 350.77      | 3,761.48            | 342.25     | -55.62     | 14,651,793.30       | 1,793,194.08       | 40.34212880 | -104.45172089 |
| 3,900.00                            | 13.76           | 350.77      | 3,858.61            | 365.73     | -59.44     | 14,651,816.75       | 1,793,190.12       | 40.34219327 | -104.45173458 |
| 4,000.00                            | 13.76           | 350.77      | 3,955.74            | 389.21     | -63.25     | 14,651,840.21       | 1,793,186.16       | 40.34225775 | -104.45174827 |
| 4,100.00                            | 13.76           | 350.77      | 4,052.87            | 412.69     | -67.07     | 14,651,863.67       | 1,793,182.20       | 40.34232222 | -104.45176197 |
| 4,200.00                            | 13.76           | 350.77      | 4,150.00            | 436.17     | -70.88     | 14,651,887.12       | 1,793,178.24       | 40.34238670 | -104.45177566 |
| 4,300.00                            | 13.76           | 350.77      | 4,247.13            | 459.65     | -74.70     | 14,651,910.58       | 1,793,174.27       | 40.34245118 | -104.45178935 |
| 4,400.00                            | 13.76           | 350.77      | 4,344.26            | 483.13     | -78.51     | 14,651,934.03       | 1,793,170.31       | 40.34251565 | -104.45180305 |
| 4,500.00                            | 13.76           | 350.77      | 4,441.39            | 506.61     | -82.33     | 14,651,957.49       | 1,793,166.35       | 40.34258013 | -104.45181674 |
| 4,600.00                            | 13.76           | 350.77      | 4,538.52            | 530.09     | -86.15     | 14,651,980.94       | 1,793,162.39       | 40.34264460 | -104.45183044 |
| 4,700.00                            | 13.76           | 350.77      | 4,635.65            | 553.57     | -89.96     | 14,652,004.40       | 1,793,158.43       | 40.34270908 | -104.45184413 |
| 4,800.00                            | 13.76           | 350.77      | 4,732.78            | 577.05     | -93.78     | 14,652,027.86       | 1,793,154.47       | 40.34277355 | -104.45185782 |
| 4,900.00                            | 13.76           | 350.77      | 4,829.91            | 600.53     | -97.59     | 14,652,051.31       | 1,793,150.51       | 40.34283803 | -104.45187152 |
| 5,000.00                            | 13.76           | 350.77      | 4,927.04            | 624.01     | -101.41    | 14,652,074.77       | 1,793,146.55       | 40.34290250 | -104.45188521 |

|                  |                       |                                     |                         |
|------------------|-----------------------|-------------------------------------|-------------------------|
| <b>Database:</b> | DB_Aug0116_LT_v14     | <b>Local Co-ordinate Reference:</b> | Well Silverton 5-07-1L  |
| <b>Company:</b>  | Confluence Resources  | <b>TVD Reference:</b>               | RKB=4629+24 @ 4653.00ft |
| <b>Project:</b>  | Weld County, Colorado | <b>MD Reference:</b>                | RKB=4629+24 @ 4653.00ft |
| <b>Site:</b>     | Section 04-T04N-R63W  | <b>North Reference:</b>             | True                    |
| <b>Well:</b>     | Silverton 5-07-1L     | <b>Survey Calculation Method:</b>   | Minimum Curvature       |
| <b>Wellbore:</b> | Original Hole         |                                     |                         |
| <b>Design:</b>   | plan1                 |                                     |                         |

| Planned Survey            |                 |             |                     |            |            |                     |                    |             |               |
|---------------------------|-----------------|-------------|---------------------|------------|------------|---------------------|--------------------|-------------|---------------|
| Measured Depth (ft)       | Inclination (°) | Azimuth (°) | Vertical Depth (ft) | +N/-S (ft) | +E/-W (ft) | Map Northing (usft) | Map Easting (usft) | Latitude    | Longitude     |
| 5,100.00                  | 13.76           | 350.77      | 5,024.17            | 647.49     | -105.23    | 14,652,098.22       | 1,793,142.58       | 40.34296698 | -104.45189891 |
| 5,200.00                  | 13.76           | 350.77      | 5,121.30            | 670.97     | -109.04    | 14,652,121.68       | 1,793,138.62       | 40.34303145 | -104.45191260 |
| 5,300.00                  | 13.76           | 350.77      | 5,218.43            | 694.45     | -112.86    | 14,652,145.14       | 1,793,134.66       | 40.34309593 | -104.45192630 |
| 5,400.00                  | 13.76           | 350.77      | 5,315.56            | 717.93     | -116.67    | 14,652,168.59       | 1,793,130.70       | 40.34316040 | -104.45193999 |
| 5,500.00                  | 13.76           | 350.77      | 5,412.69            | 741.41     | -120.49    | 14,652,192.05       | 1,793,126.74       | 40.34322488 | -104.45195368 |
| 5,600.00                  | 13.76           | 350.77      | 5,509.81            | 764.89     | -124.30    | 14,652,215.50       | 1,793,122.78       | 40.34328935 | -104.45196738 |
| 5,700.00                  | 13.76           | 350.77      | 5,606.94            | 788.37     | -128.12    | 14,652,238.96       | 1,793,118.82       | 40.34335383 | -104.45198107 |
| 5,800.00                  | 13.76           | 350.77      | 5,704.07            | 811.85     | -131.94    | 14,652,262.42       | 1,793,114.86       | 40.34341830 | -104.45199477 |
| 5,900.00                  | 13.76           | 350.77      | 5,801.20            | 835.33     | -135.75    | 14,652,285.87       | 1,793,110.89       | 40.34348278 | -104.45200846 |
| 5,911.39                  | 13.76           | 350.77      | 5,812.27            | 838.01     | -136.19    | 14,652,288.54       | 1,793,110.44       | 40.34349012 | -104.45201002 |
| Begin 10°/100' build/turn |                 |             |                     |            |            |                     |                    |             |               |
| 6,000.00                  | 17.44           | 320.27      | 5,897.74            | 858.67     | -146.39    | 14,652,309.14       | 1,793,100.11       | 40.34354685 | -104.45204663 |
| 6,100.00                  | 24.88           | 301.39      | 5,991.03            | 881.21     | -174.00    | 14,652,331.51       | 1,793,072.37       | 40.34360874 | -104.45214571 |
| 6,200.00                  | 33.61           | 291.30      | 6,078.26            | 902.27     | -217.85    | 14,652,352.30       | 1,793,028.38       | 40.34366658 | -104.45230310 |
| 6,300.00                  | 42.85           | 285.07      | 6,156.75            | 921.21     | -276.62    | 14,652,370.88       | 1,792,969.49       | 40.34371860 | -104.45251402 |
| 6,400.00                  | 52.33           | 280.73      | 6,224.14            | 937.47     | -348.53    | 14,652,386.68       | 1,792,897.49       | 40.34376322 | -104.45277205 |
| 6,500.00                  | 61.92           | 277.38      | 6,278.36            | 950.53     | -431.37    | 14,652,399.23       | 1,792,814.57       | 40.34379909 | -104.45306936 |
| 6,600.00                  | 71.59           | 274.58      | 6,317.79            | 960.01     | -522.64    | 14,652,408.15       | 1,792,723.24       | 40.34382512 | -104.45339691 |
| 6,700.00                  | 81.29           | 272.09      | 6,341.21            | 965.62     | -619.57    | 14,652,413.16       | 1,792,626.28       | 40.34384052 | -104.45374476 |
| 6,789.60                  | 90.00           | 269.97      | 6,348.00            | 967.21     | -708.80    | 14,652,414.20       | 1,792,537.04       | 40.34384489 | -104.45406499 |
| LP Begin 90° lateral      |                 |             |                     |            |            |                     |                    |             |               |
| 6,800.00                  | 90.00           | 269.97      | 6,348.00            | 967.21     | -719.21    | 14,652,414.13       | 1,792,526.64       | 40.34384487 | -104.45410233 |
| 6,900.00                  | 90.00           | 269.97      | 6,348.00            | 967.15     | -819.21    | 14,652,413.45       | 1,792,426.64       | 40.34384471 | -104.45446120 |
| 7,000.00                  | 90.00           | 269.97      | 6,348.00            | 967.10     | -919.21    | 14,652,412.78       | 1,792,326.64       | 40.34384455 | -104.45482008 |
| 7,100.00                  | 90.00           | 269.97      | 6,348.00            | 967.04     | -1,019.21  | 14,652,412.10       | 1,792,226.64       | 40.34384439 | -104.45517895 |
| 7,200.00                  | 90.00           | 269.97      | 6,348.00            | 966.99     | -1,119.21  | 14,652,411.43       | 1,792,126.65       | 40.34384422 | -104.45553783 |
| 7,300.00                  | 90.00           | 269.97      | 6,348.00            | 966.93     | -1,219.21  | 14,652,410.75       | 1,792,026.65       | 40.34384406 | -104.45589670 |
| 7,400.00                  | 90.00           | 269.97      | 6,348.00            | 966.88     | -1,319.21  | 14,652,410.08       | 1,791,926.65       | 40.34384389 | -104.45625557 |
| 7,500.00                  | 90.00           | 269.97      | 6,348.00            | 966.82     | -1,419.21  | 14,652,409.40       | 1,791,826.65       | 40.34384373 | -104.45661445 |
| 7,600.00                  | 90.00           | 269.97      | 6,348.00            | 966.77     | -1,519.21  | 14,652,408.73       | 1,791,726.66       | 40.34384356 | -104.45697332 |
| 7,700.00                  | 90.00           | 269.97      | 6,348.00            | 966.71     | -1,619.21  | 14,652,408.06       | 1,791,626.66       | 40.34384339 | -104.45733220 |
| 7,800.00                  | 90.00           | 269.97      | 6,348.00            | 966.66     | -1,719.21  | 14,652,407.38       | 1,791,526.66       | 40.34384322 | -104.45769107 |
| 7,900.00                  | 90.00           | 269.97      | 6,348.00            | 966.60     | -1,819.21  | 14,652,406.71       | 1,791,426.66       | 40.34384305 | -104.45804994 |
| 8,000.00                  | 90.00           | 269.97      | 6,348.00            | 966.55     | -1,919.21  | 14,652,406.03       | 1,791,326.67       | 40.34384288 | -104.45840882 |
| 8,100.00                  | 90.00           | 269.97      | 6,348.00            | 966.49     | -2,019.21  | 14,652,405.36       | 1,791,226.67       | 40.34384271 | -104.45876769 |
| 8,200.00                  | 90.00           | 269.97      | 6,348.00            | 966.44     | -2,119.21  | 14,652,404.68       | 1,791,126.67       | 40.34384253 | -104.45912657 |
| 8,300.00                  | 90.00           | 269.97      | 6,348.00            | 966.38     | -2,219.21  | 14,652,404.01       | 1,791,026.67       | 40.34384236 | -104.45948544 |
| 8,400.00                  | 90.00           | 269.97      | 6,348.00            | 966.33     | -2,319.21  | 14,652,403.33       | 1,790,926.68       | 40.34384218 | -104.45984432 |
| 8,500.00                  | 90.00           | 269.97      | 6,348.00            | 966.27     | -2,419.21  | 14,652,402.66       | 1,790,826.68       | 40.34384201 | -104.46020319 |
| 8,600.00                  | 90.00           | 269.97      | 6,348.00            | 966.22     | -2,519.21  | 14,652,401.98       | 1,790,726.68       | 40.34384183 | -104.46056207 |
| 8,700.00                  | 90.00           | 269.97      | 6,348.00            | 966.16     | -2,619.21  | 14,652,401.31       | 1,790,626.68       | 40.34384165 | -104.46092094 |
| 8,800.00                  | 90.00           | 269.97      | 6,348.00            | 966.11     | -2,719.21  | 14,652,400.63       | 1,790,526.69       | 40.34384147 | -104.46127981 |
| 8,900.00                  | 90.00           | 269.97      | 6,348.00            | 966.05     | -2,819.21  | 14,652,399.96       | 1,790,426.69       | 40.34384128 | -104.46163869 |
| 9,000.00                  | 90.00           | 269.97      | 6,348.00            | 966.00     | -2,919.21  | 14,652,399.28       | 1,790,326.69       | 40.34384110 | -104.46199756 |
| 9,100.00                  | 90.00           | 269.97      | 6,348.00            | 965.94     | -3,019.21  | 14,652,398.61       | 1,790,226.69       | 40.34384092 | -104.46235644 |
| 9,200.00                  | 90.00           | 269.97      | 6,348.00            | 965.89     | -3,119.21  | 14,652,397.93       | 1,790,126.69       | 40.34384073 | -104.46271531 |
| 9,300.00                  | 90.00           | 269.97      | 6,348.00            | 965.83     | -3,219.21  | 14,652,397.26       | 1,790,026.70       | 40.34384055 | -104.46307419 |
| 9,400.00                  | 90.00           | 269.97      | 6,348.00            | 965.78     | -3,319.21  | 14,652,396.59       | 1,789,926.70       | 40.34384036 | -104.46343306 |
| 9,500.00                  | 90.00           | 269.97      | 6,348.00            | 965.72     | -3,419.21  | 14,652,395.91       | 1,789,826.70       | 40.34384017 | -104.46379193 |
| 9,600.00                  | 90.00           | 269.97      | 6,348.00            | 965.67     | -3,519.21  | 14,652,395.24       | 1,789,726.70       | 40.34383998 | -104.46415081 |
| 9,700.00                  | 90.00           | 269.97      | 6,348.00            | 965.61     | -3,619.21  | 14,652,394.56       | 1,789,626.71       | 40.34383979 | -104.46450968 |
| 9,800.00                  | 90.00           | 269.97      | 6,348.00            | 965.56     | -3,719.21  | 14,652,393.89       | 1,789,526.71       | 40.34383960 | -104.46486856 |
| 9,900.00                  | 90.00           | 269.97      | 6,348.00            | 965.50     | -3,819.21  | 14,652,393.21       | 1,789,426.71       | 40.34383941 | -104.46522743 |
| 10,000.00                 | 90.00           | 269.97      | 6,348.00            | 965.45     | -3,919.21  | 14,652,392.54       | 1,789,326.71       | 40.34383921 | -104.46558631 |

|                  |                       |                                     |                         |
|------------------|-----------------------|-------------------------------------|-------------------------|
| <b>Database:</b> | DB_Aug0116_LT_v14     | <b>Local Co-ordinate Reference:</b> | Well Silverton 5-07-1L  |
| <b>Company:</b>  | Confluence Resources  | <b>TVD Reference:</b>               | RKB=4629+24 @ 4653.00ft |
| <b>Project:</b>  | Weld County, Colorado | <b>MD Reference:</b>                | RKB=4629+24 @ 4653.00ft |
| <b>Site:</b>     | Section 04-T04N-R63W  | <b>North Reference:</b>             | True                    |
| <b>Well:</b>     | Silverton 5-07-1L     | <b>Survey Calculation Method:</b>   | Minimum Curvature       |
| <b>Wellbore:</b> | Original Hole         |                                     |                         |
| <b>Design:</b>   | plan1                 |                                     |                         |

| Planned Survey      |                 |             |                     |            |            |                     |                    |             |               |
|---------------------|-----------------|-------------|---------------------|------------|------------|---------------------|--------------------|-------------|---------------|
| Measured Depth (ft) | Inclination (°) | Azimuth (°) | Vertical Depth (ft) | +N/-S (ft) | +E/-W (ft) | Map Northing (usft) | Map Easting (usft) | Latitude    | Longitude     |
| 10,100.00           | 90.00           | 269.97      | 6,348.00            | 965.39     | -4,019.21  | 14,652,391.86       | 1,789,226.72       | 40.34383902 | -104.46594518 |
| 10,200.00           | 90.00           | 269.97      | 6,348.00            | 965.34     | -4,119.21  | 14,652,391.19       | 1,789,126.72       | 40.34383882 | -104.46630406 |
| 10,300.00           | 90.00           | 269.97      | 6,348.00            | 965.28     | -4,219.21  | 14,652,390.51       | 1,789,026.72       | 40.34383862 | -104.46666293 |
| 10,400.00           | 90.00           | 269.97      | 6,348.00            | 965.23     | -4,319.21  | 14,652,389.84       | 1,788,926.72       | 40.34383842 | -104.46702181 |
| 10,500.00           | 90.00           | 269.97      | 6,348.00            | 965.17     | -4,419.21  | 14,652,389.16       | 1,788,826.73       | 40.34383822 | -104.46738068 |
| 10,600.00           | 90.00           | 269.97      | 6,348.00            | 965.12     | -4,519.21  | 14,652,388.49       | 1,788,726.73       | 40.34383802 | -104.46773955 |
| 10,700.00           | 90.00           | 269.97      | 6,348.00            | 965.06     | -4,619.21  | 14,652,387.81       | 1,788,626.73       | 40.34383782 | -104.46809843 |
| 10,800.00           | 90.00           | 269.97      | 6,348.00            | 965.01     | -4,719.21  | 14,652,387.14       | 1,788,526.73       | 40.34383762 | -104.46845730 |
| 10,900.00           | 90.00           | 269.97      | 6,348.00            | 964.95     | -4,819.21  | 14,652,386.46       | 1,788,426.74       | 40.34383741 | -104.46881618 |
| 11,000.00           | 90.00           | 269.97      | 6,348.00            | 964.90     | -4,919.21  | 14,652,385.79       | 1,788,326.74       | 40.34383721 | -104.46917505 |
| 11,100.00           | 90.00           | 269.97      | 6,348.00            | 964.84     | -5,019.21  | 14,652,385.12       | 1,788,226.74       | 40.34383700 | -104.46953393 |
| 11,200.00           | 90.00           | 269.97      | 6,348.00            | 964.79     | -5,119.21  | 14,652,384.44       | 1,788,126.74       | 40.34383680 | -104.46989280 |
| 11,300.00           | 90.00           | 269.97      | 6,348.00            | 964.73     | -5,219.21  | 14,652,383.77       | 1,788,026.75       | 40.34383659 | -104.47025168 |
| 11,400.00           | 90.00           | 269.97      | 6,348.00            | 964.68     | -5,319.21  | 14,652,383.09       | 1,787,926.75       | 40.34383638 | -104.47061055 |
| 11,500.00           | 90.00           | 269.97      | 6,348.00            | 964.62     | -5,419.21  | 14,652,382.42       | 1,787,826.75       | 40.34383617 | -104.47096943 |
| 11,600.00           | 90.00           | 269.97      | 6,348.00            | 964.57     | -5,519.21  | 14,652,381.74       | 1,787,726.75       | 40.34383595 | -104.47132830 |
| 11,700.00           | 90.00           | 269.97      | 6,348.00            | 964.51     | -5,619.21  | 14,652,381.07       | 1,787,626.76       | 40.34383574 | -104.47168718 |
| 11,800.00           | 90.00           | 269.97      | 6,348.00            | 964.46     | -5,719.21  | 14,652,380.39       | 1,787,526.76       | 40.34383553 | -104.47204605 |
| 11,900.00           | 90.00           | 269.97      | 6,348.00            | 964.40     | -5,819.21  | 14,652,379.72       | 1,787,426.76       | 40.34383531 | -104.47240492 |
| 12,000.00           | 90.00           | 269.97      | 6,348.00            | 964.35     | -5,919.21  | 14,652,379.04       | 1,787,326.76       | 40.34383510 | -104.47276380 |
| 12,100.00           | 90.00           | 269.97      | 6,348.00            | 964.29     | -6,019.21  | 14,652,378.37       | 1,787,226.77       | 40.34383488 | -104.47312267 |
| 12,200.00           | 90.00           | 269.97      | 6,348.00            | 964.24     | -6,119.20  | 14,652,377.69       | 1,787,126.77       | 40.34383466 | -104.47348155 |
| 12,300.00           | 90.00           | 269.97      | 6,348.00            | 964.18     | -6,219.20  | 14,652,377.02       | 1,787,026.77       | 40.34383444 | -104.47384042 |
| 12,400.00           | 90.00           | 269.97      | 6,348.00            | 964.13     | -6,319.20  | 14,652,376.34       | 1,786,926.77       | 40.34383422 | -104.47419930 |
| 12,500.00           | 90.00           | 269.97      | 6,348.00            | 964.07     | -6,419.20  | 14,652,375.67       | 1,786,826.78       | 40.34383400 | -104.47455817 |
| 12,600.00           | 90.00           | 269.97      | 6,348.00            | 964.02     | -6,519.20  | 14,652,374.99       | 1,786,726.78       | 40.34383377 | -104.47491705 |
| 12,700.00           | 90.00           | 269.97      | 6,348.00            | 963.96     | -6,619.20  | 14,652,374.32       | 1,786,626.78       | 40.34383355 | -104.47527592 |
| 12,800.00           | 90.00           | 269.97      | 6,348.00            | 963.91     | -6,719.20  | 14,652,373.65       | 1,786,526.78       | 40.34383333 | -104.47563480 |
| 12,900.00           | 90.00           | 269.97      | 6,348.00            | 963.85     | -6,819.20  | 14,652,372.97       | 1,786,426.79       | 40.34383310 | -104.47599367 |
| 13,000.00           | 90.00           | 269.97      | 6,348.00            | 963.80     | -6,919.20  | 14,652,372.30       | 1,786,326.79       | 40.34383287 | -104.47635255 |
| 13,100.00           | 90.00           | 269.97      | 6,348.00            | 963.74     | -7,019.20  | 14,652,371.62       | 1,786,226.79       | 40.34383264 | -104.47671142 |
| 13,200.00           | 90.00           | 269.97      | 6,348.00            | 963.69     | -7,119.20  | 14,652,370.95       | 1,786,126.79       | 40.34383241 | -104.47707030 |
| 13,300.00           | 90.00           | 269.97      | 6,348.00            | 963.63     | -7,219.20  | 14,652,370.27       | 1,786,026.80       | 40.34383218 | -104.47742917 |
| 13,400.00           | 90.00           | 269.97      | 6,348.00            | 963.58     | -7,319.20  | 14,652,369.60       | 1,785,926.80       | 40.34383195 | -104.47778805 |
| 13,500.00           | 90.00           | 269.97      | 6,348.00            | 963.52     | -7,419.20  | 14,652,368.92       | 1,785,826.80       | 40.34383172 | -104.47814692 |
| 13,600.00           | 90.00           | 269.97      | 6,348.00            | 963.47     | -7,519.20  | 14,652,368.25       | 1,785,726.80       | 40.34383148 | -104.47850580 |
| 13,700.00           | 90.00           | 269.97      | 6,348.00            | 963.41     | -7,619.20  | 14,652,367.57       | 1,785,626.81       | 40.34383125 | -104.47886467 |
| 13,800.00           | 90.00           | 269.97      | 6,348.00            | 963.36     | -7,719.20  | 14,652,366.90       | 1,785,526.81       | 40.34383101 | -104.47922355 |
| 13,900.00           | 90.00           | 269.97      | 6,348.00            | 963.30     | -7,819.20  | 14,652,366.22       | 1,785,426.81       | 40.34383077 | -104.47958242 |
| 14,000.00           | 90.00           | 269.97      | 6,348.00            | 963.25     | -7,919.20  | 14,652,365.55       | 1,785,326.81       | 40.34383054 | -104.47994130 |
| 14,100.00           | 90.00           | 269.97      | 6,348.00            | 963.19     | -8,019.20  | 14,652,364.87       | 1,785,226.82       | 40.34383030 | -104.48030017 |
| 14,200.00           | 90.00           | 269.97      | 6,348.00            | 963.14     | -8,119.20  | 14,652,364.20       | 1,785,126.82       | 40.34383006 | -104.48065905 |
| 14,300.00           | 90.00           | 269.97      | 6,348.00            | 963.08     | -8,219.20  | 14,652,363.52       | 1,785,026.82       | 40.34382981 | -104.48101792 |
| 14,400.00           | 90.00           | 269.97      | 6,348.00            | 963.03     | -8,319.20  | 14,652,362.85       | 1,784,926.82       | 40.34382957 | -104.48137680 |
| 14,500.00           | 90.00           | 269.97      | 6,348.00            | 962.97     | -8,419.20  | 14,652,362.18       | 1,784,826.83       | 40.34382933 | -104.48173567 |
| 14,600.00           | 90.00           | 269.97      | 6,348.00            | 962.92     | -8,519.20  | 14,652,361.50       | 1,784,726.83       | 40.34382908 | -104.48209455 |
| 14,700.00           | 90.00           | 269.97      | 6,348.00            | 962.86     | -8,619.20  | 14,652,360.83       | 1,784,626.83       | 40.34382883 | -104.48245342 |
| 14,800.00           | 90.00           | 269.97      | 6,348.00            | 962.81     | -8,719.20  | 14,652,360.15       | 1,784,526.83       | 40.34382859 | -104.48281230 |
| 14,900.00           | 90.00           | 269.97      | 6,348.00            | 962.75     | -8,819.20  | 14,652,359.48       | 1,784,426.84       | 40.34382834 | -104.48317117 |
| 15,000.00           | 90.00           | 269.97      | 6,348.00            | 962.70     | -8,919.20  | 14,652,358.80       | 1,784,326.84       | 40.34382809 | -104.48353005 |
| 15,100.00           | 90.00           | 269.97      | 6,348.00            | 962.64     | -9,019.20  | 14,652,358.13       | 1,784,226.84       | 40.34382784 | -104.48388892 |
| 15,200.00           | 90.00           | 269.97      | 6,348.00            | 962.59     | -9,119.20  | 14,652,357.45       | 1,784,126.84       | 40.34382759 | -104.48424780 |
| 15,300.00           | 90.00           | 269.97      | 6,348.00            | 962.53     | -9,219.20  | 14,652,356.78       | 1,784,026.85       | 40.34382733 | -104.48460666 |
| 15,400.00           | 90.00           | 269.97      | 6,348.00            | 962.48     | -9,319.20  | 14,652,356.10       | 1,783,926.85       | 40.34382708 | -104.48496554 |
| 15,500.00           | 90.00           | 269.97      | 6,348.00            | 962.42     | -9,419.20  | 14,652,355.43       | 1,783,826.85       | 40.34382682 | -104.48532441 |

|                  |                       |                                     |                         |
|------------------|-----------------------|-------------------------------------|-------------------------|
| <b>Database:</b> | DB_Aug0116_LT_v14     | <b>Local Co-ordinate Reference:</b> | Well Silverton 5-07-1L  |
| <b>Company:</b>  | Confluence Resources  | <b>TVD Reference:</b>               | RKB=4629+24 @ 4653.00ft |
| <b>Project:</b>  | Weld County, Colorado | <b>MD Reference:</b>                | RKB=4629+24 @ 4653.00ft |
| <b>Site:</b>     | Section 04-T04N-R63W  | <b>North Reference:</b>             | True                    |
| <b>Well:</b>     | Silverton 5-07-1L     | <b>Survey Calculation Method:</b>   | Minimum Curvature       |
| <b>Wellbore:</b> | Original Hole         |                                     |                         |
| <b>Design:</b>   | plan1                 |                                     |                         |

| Planned Survey                  |                 |             |                     |            |            |                     |                    |             |               |
|---------------------------------|-----------------|-------------|---------------------|------------|------------|---------------------|--------------------|-------------|---------------|
| Measured Depth (ft)             | Inclination (°) | Azimuth (°) | Vertical Depth (ft) | +N/-S (ft) | +E/-W (ft) | Map Northing (usft) | Map Easting (usft) | Latitude    | Longitude     |
| 15,600.00                       | 90.00           | 269.97      | 6,348.00            | 962.37     | -9,519.20  | 14,652,354.75       | 1,783,726.85       | 40.34382657 | -104.48568329 |
| 15,700.00                       | 90.00           | 269.97      | 6,348.00            | 962.31     | -9,619.20  | 14,652,354.08       | 1,783,626.86       | 40.34382631 | -104.48604216 |
| 15,800.00                       | 90.00           | 269.97      | 6,348.00            | 962.26     | -9,719.20  | 14,652,353.40       | 1,783,526.86       | 40.34382605 | -104.48640104 |
| 15,900.00                       | 90.00           | 269.97      | 6,348.00            | 962.20     | -9,819.20  | 14,652,352.73       | 1,783,426.86       | 40.34382579 | -104.48675991 |
| 16,000.00                       | 90.00           | 269.97      | 6,348.00            | 962.15     | -9,919.20  | 14,652,352.05       | 1,783,326.86       | 40.34382553 | -104.48711879 |
| 16,100.00                       | 90.00           | 269.97      | 6,348.00            | 962.09     | -10,019.20 | 14,652,351.38       | 1,783,226.87       | 40.34382527 | -104.48747766 |
| 16,200.00                       | 90.00           | 269.97      | 6,348.00            | 962.04     | -10,119.20 | 14,652,350.71       | 1,783,126.87       | 40.34382500 | -104.48783654 |
| 16,201.19                       | 90.00           | 269.97      | 6,348.00            | 962.04     | -10,120.39 | 14,652,350.70       | 1,783,125.68       | 40.34382500 | -104.48784080 |
| PBHL/TD 16201.19 MD 6348.00 TVD |                 |             |                     |            |            |                     |                    |             |               |

| Design Targets            |               |              |          |            |            |                 |                |             |               |
|---------------------------|---------------|--------------|----------|------------|------------|-----------------|----------------|-------------|---------------|
| Target Name               | Dip Angle (°) | Dip Dir. (°) | TVD (ft) | +N/-S (ft) | +E/-W (ft) | Northing (usft) | Easting (usft) | Latitude    | Longitude     |
| - hit/miss target         |               |              |          |            |            |                 |                |             |               |
| - Shape                   |               |              |          |            |            |                 |                |             |               |
| Silverton 5-07-1L SL 269  | 0.00          | 0.00         | 24.00    | 0.00       | 0.00       | 14,651,451.40   | 1,793,251.82   | 40.34118899 | -104.45152128 |
| - plan hits target center |               |              |          |            |            |                 |                |             |               |
| - Point                   |               |              |          |            |            |                 |                |             |               |
| Silverton 5-07-1L BHL 11  | 0.00          | 0.00         | 6,348.00 | 962.04     | -10,120.39 | 14,652,350.70   | 1,783,125.68   | 40.34382500 | -104.48784080 |
| - plan hits target center |               |              |          |            |            |                 |                |             |               |
| - Point                   |               |              |          |            |            |                 |                |             |               |
| Silverton 5-07-1L LP 177  | 0.00          | 0.00         | 6,348.00 | 967.21     | -708.80    | 14,652,414.20   | 1,792,537.04   | 40.34384489 | -104.45406499 |
| - plan hits target center |               |              |          |            |            |                 |                |             |               |
| - Point                   |               |              |          |            |            |                 |                |             |               |

| Plan Annotations    |                     |                   |            |                                 |
|---------------------|---------------------|-------------------|------------|---------------------------------|
| Measured Depth (ft) | Vertical Depth (ft) | Local Coordinates |            | Comment                         |
|                     |                     | +N/-S (ft)        | +E/-W (ft) |                                 |
| 2,000.00            | 2,000.00            | 0.00              | 0.00       | KOP Begin 2°/100' build         |
| 2,688.08            | 2,681.48            | 81.17             | -13.19     | Begin 13.76° tangent section    |
| 5,911.39            | 5,812.27            | 838.01            | -136.19    | Begin 10°/100' build/turn       |
| 6,789.60            | 6,348.00            | 967.21            | -708.80    | LP Begin 90° lateral            |
| 16,201.19           | 6,348.00            | 962.04            | -10,120.39 | PBHL/TD 16201.19 MD 6348.00 TVD |

|                  |                       |                                     |                         |
|------------------|-----------------------|-------------------------------------|-------------------------|
| <b>Database:</b> | DB_Aug0116_LT_v14     | <b>Local Co-ordinate Reference:</b> | Well Silverton 5-07-1L  |
| <b>Company:</b>  | Confluence Resources  | <b>TVD Reference:</b>               | RKB=4629+24 @ 4653.00ft |
| <b>Project:</b>  | Weld County, Colorado | <b>MD Reference:</b>                | RKB=4629+24 @ 4653.00ft |
| <b>Site:</b>     | Section 04-T04N-R63W  | <b>North Reference:</b>             | True                    |
| <b>Well:</b>     | Silverton 5-07-1L     | <b>Survey Calculation Method:</b>   | Minimum Curvature       |
| <b>Wellbore:</b> | Original Hole         |                                     |                         |
| <b>Design:</b>   | plan1                 |                                     |                         |

|                    |  |                      |                |
|--------------------|--|----------------------|----------------|
| <b>Project</b>     | Weld County, Colorado                          |                      |                |
| <b>Map System:</b> | Universal Transverse Mercator (US Survey Feet) | <b>System Datum:</b> | Mean Sea Level |
| <b>Geo Datum:</b>  | NAD83 Colorado - HARN                          |                      |                |
| <b>Map Zone:</b>   | Zone 13N (108 W to 102 W)                      |                      |                |

|                       |         |                      |                    |                   |               |
|-----------------------|---------|----------------------|--------------------|-------------------|---------------|
| Site                  |         | Section 04-T04N-R63W |                    |                   |               |
| Site Position:        |         | Northing:            | 14,650,073.90 usft | Latitude:         | 40.33740565   |
| From:                 | Map     | Easting:             | 1,793,302.13 usft  | Longitude:        | -104.45137138 |
| Position Uncertainty: | 0.00 ft | Slot Radius:         | 13-3/16 "          | Grid Convergence: | 0.36 °        |

|                      |  |             |                     |                    |               |               |
|----------------------|--|-------------|---------------------|--------------------|---------------|---------------|
| Well                 | Silverton 5-07-1L, Surf loc: 2698 FSL 255 FWL Section 04-T04N-R63W |             |                     |                    |               |               |
| Well Position        | +N/-S  | 1,377.79 ft | Northing:           | 14,651,451.40 usft | Latitude:     | 40.34118899   |
|                      | +E/-W  | -41.77 ft   | Easting:            | 1,793,251.82 usft  | Longitude:    | -104.45152128 |
| Position Uncertainty |  | 0.00 ft     | Wellhead Elevation: |                    | Ground Level: | 4,629.00 ft   |

|                  |                   |                    |                        |                      |                            |
|------------------|-------------------|--------------------|------------------------|----------------------|----------------------------|
| <b>Wellbore</b>  | Original Hole     |                    |                        |                      |                            |
| <b>Magnetics</b> | <b>Model Name</b> | <b>Sample Date</b> | <b>Declination (°)</b> | <b>Dip Angle (°)</b> | <b>Field Strength (nT)</b> |
|                  | HDGM              | 5/29/2018          | 8.08                   | 66.90                | 52,227.90000000            |

|                          |                              |                   |                      |                      |
|--------------------------|------------------------------|-------------------|----------------------|----------------------|
| <b>Design</b>            | plan1                        |                   |                      |                      |
| <b>Audit Notes:</b>      |                              |                   |                      |                      |
| <b>Version:</b>          | <b>Phase:</b>                | PLAN              | <b>Tie On Depth:</b> | 0.00                 |
| <b>Vertical Section:</b> | <b>Depth From (TVD) (ft)</b> | <b>+N/-S (ft)</b> | <b>+E/-W (ft)</b>    | <b>Direction (°)</b> |
|                          | 0.00                         | 0.00              | 0.00                 | 275.43               |

|                                 |                      |                          |                       |                |
|---------------------------------|----------------------|--------------------------|-----------------------|----------------|
| <b>Plan Survey Tool Program</b> | <b>Date</b>          | 5/29/2018                |                       |                |
| <b>Depth From (ft)</b>          | <b>Depth To (ft)</b> | <b>Survey (Wellbore)</b> | <b>Tool Name</b>      | <b>Remarks</b> |
| 1                               | 0.00                 | 16,201.19                | plan1 (Original Hole) |                |

|                            |                        |                    |                            |                   |                   |                              |                             |                            |                |                       |
|----------------------------|------------------------|--------------------|----------------------------|-------------------|-------------------|------------------------------|-----------------------------|----------------------------|----------------|-----------------------|
| <b>Plan Sections</b>       |                        |                    |                            |                   |                   |                              |                             |                            |                |                       |
| <b>Measured Depth (ft)</b> | <b>Inclination (°)</b> | <b>Azimuth (°)</b> | <b>Vertical Depth (ft)</b> | <b>+N/-S (ft)</b> | <b>+E/-W (ft)</b> | <b>Dogleg Rate (°/100ft)</b> | <b>Build Rate (°/100ft)</b> | <b>Turn Rate (°/100ft)</b> | <b>TFO (°)</b> | <b>Target</b>         |
| 0.00                       | 0.00                   | 0.00               | 0.00                       | 0.00              | 0.00              | 0.00                         | 0.00                        | 0.00                       | 0.00           |                       |
| 2,000.00                   | 0.00                   | 0.00               | 2,000.00                   | 0.00              | 0.00              | 0.00                         | 0.00                        | 0.00                       | 0.00           |                       |
| 2,688.08                   | 13.76                  | 350.77             | 2,681.48                   | 81.17             | -13.19            | 2.00                         | 2.00                        | 0.00                       | 350.77         |                       |
| 5,911.39                   | 13.76                  | 350.77             | 5,812.27                   | 838.01            | -136.19           | 0.00                         | 0.00                        | 0.00                       | 0.00           |                       |
| 6,789.60                   | 90.00                  | 269.97             | 6,348.00                   | 967.21            | -708.80           | 10.00                        | 8.68                        | -9.20                      | -81.06         | Silverton 5-07-1L LP  |
| 16,201.19                  | 90.00                  | 269.97             | 6,348.00                   | 962.04            | -10,120.39        | 0.00                         | 0.00                        | 0.00                       | 0.00           | Silverton 5-07-1L BHL |



|                  |                       |                                     |                         |
|------------------|-----------------------|-------------------------------------|-------------------------|
| <b>Database:</b> | DB_Aug0116_LT_v14     | <b>Local Co-ordinate Reference:</b> | Well Silverton 5-07-1L  |
| <b>Company:</b>  | Confluence Resources  | <b>TVD Reference:</b>               | RKB=4629+24 @ 4653.00ft |
| <b>Project:</b>  | Weld County, Colorado | <b>MD Reference:</b>                | RKB=4629+24 @ 4653.00ft |
| <b>Site:</b>     | Section 04-T04N-R63W  | <b>North Reference:</b>             | True                    |
| <b>Well:</b>     | Silverton 5-07-1L     | <b>Survey Calculation Method:</b>   | Minimum Curvature       |
| <b>Wellbore:</b> | Original Hole         |                                     |                         |
| <b>Design:</b>   | plan1                 |                                     |                         |

| Planned Survey                      |                 |             |                     |            |            |                       |                       |                      |                     |
|-------------------------------------|-----------------|-------------|---------------------|------------|------------|-----------------------|-----------------------|----------------------|---------------------|
| Measured Depth (ft)                 | Inclination (°) | Azimuth (°) | Vertical Depth (ft) | +N/-S (ft) | +E/-W (ft) | Vertical Section (ft) | Dogleg Rate (°/100ft) | Build Rate (°/100ft) | Turn Rate (°/100ft) |
| 0.00                                | 0.00            | 0.00        | 0.00                | 0.00       | 0.00       | 0.00                  | 0.00                  | 0.00                 | 0.00                |
| 100.00                              | 0.00            | 0.00        | 100.00              | 0.00       | 0.00       | 0.00                  | 0.00                  | 0.00                 | 0.00                |
| 200.00                              | 0.00            | 0.00        | 200.00              | 0.00       | 0.00       | 0.00                  | 0.00                  | 0.00                 | 0.00                |
| 300.00                              | 0.00            | 0.00        | 300.00              | 0.00       | 0.00       | 0.00                  | 0.00                  | 0.00                 | 0.00                |
| 400.00                              | 0.00            | 0.00        | 400.00              | 0.00       | 0.00       | 0.00                  | 0.00                  | 0.00                 | 0.00                |
| 500.00                              | 0.00            | 0.00        | 500.00              | 0.00       | 0.00       | 0.00                  | 0.00                  | 0.00                 | 0.00                |
| 600.00                              | 0.00            | 0.00        | 600.00              | 0.00       | 0.00       | 0.00                  | 0.00                  | 0.00                 | 0.00                |
| 700.00                              | 0.00            | 0.00        | 700.00              | 0.00       | 0.00       | 0.00                  | 0.00                  | 0.00                 | 0.00                |
| 800.00                              | 0.00            | 0.00        | 800.00              | 0.00       | 0.00       | 0.00                  | 0.00                  | 0.00                 | 0.00                |
| 900.00                              | 0.00            | 0.00        | 900.00              | 0.00       | 0.00       | 0.00                  | 0.00                  | 0.00                 | 0.00                |
| 1,000.00                            | 0.00            | 0.00        | 1,000.00            | 0.00       | 0.00       | 0.00                  | 0.00                  | 0.00                 | 0.00                |
| 1,100.00                            | 0.00            | 0.00        | 1,100.00            | 0.00       | 0.00       | 0.00                  | 0.00                  | 0.00                 | 0.00                |
| 1,200.00                            | 0.00            | 0.00        | 1,200.00            | 0.00       | 0.00       | 0.00                  | 0.00                  | 0.00                 | 0.00                |
| 1,300.00                            | 0.00            | 0.00        | 1,300.00            | 0.00       | 0.00       | 0.00                  | 0.00                  | 0.00                 | 0.00                |
| 1,400.00                            | 0.00            | 0.00        | 1,400.00            | 0.00       | 0.00       | 0.00                  | 0.00                  | 0.00                 | 0.00                |
| 1,500.00                            | 0.00            | 0.00        | 1,500.00            | 0.00       | 0.00       | 0.00                  | 0.00                  | 0.00                 | 0.00                |
| 1,600.00                            | 0.00            | 0.00        | 1,600.00            | 0.00       | 0.00       | 0.00                  | 0.00                  | 0.00                 | 0.00                |
| 1,700.00                            | 0.00            | 0.00        | 1,700.00            | 0.00       | 0.00       | 0.00                  | 0.00                  | 0.00                 | 0.00                |
| 1,800.00                            | 0.00            | 0.00        | 1,800.00            | 0.00       | 0.00       | 0.00                  | 0.00                  | 0.00                 | 0.00                |
| 1,900.00                            | 0.00            | 0.00        | 1,900.00            | 0.00       | 0.00       | 0.00                  | 0.00                  | 0.00                 | 0.00                |
| 2,000.00                            | 0.00            | 0.00        | 2,000.00            | 0.00       | 0.00       | 0.00                  | 0.00                  | 0.00                 | 0.00                |
| <b>KOP Begin 2°/100' build</b>      |                 |             |                     |            |            |                       |                       |                      |                     |
| 2,100.00                            | 2.00            | 350.77      | 2,099.98            | 1.72       | -0.28      | 0.44                  | 2.00                  | 2.00                 | 0.00                |
| 2,200.00                            | 4.00            | 350.77      | 2,199.84            | 6.89       | -1.12      | 1.77                  | 2.00                  | 2.00                 | 0.00                |
| 2,300.00                            | 6.00            | 350.77      | 2,299.45            | 15.49      | -2.52      | 3.97                  | 2.00                  | 2.00                 | 0.00                |
| 2,400.00                            | 8.00            | 350.77      | 2,398.70            | 27.52      | -4.47      | 7.06                  | 2.00                  | 2.00                 | 0.00                |
| 2,500.00                            | 10.00           | 350.77      | 2,497.47            | 42.96      | -6.98      | 11.02                 | 2.00                  | 2.00                 | 0.00                |
| 2,600.00                            | 12.00           | 350.77      | 2,595.62            | 61.79      | -10.04     | 15.84                 | 2.00                  | 2.00                 | 0.00                |
| 2,688.08                            | 13.76           | 350.77      | 2,681.48            | 81.17      | -13.19     | 20.81                 | 2.00                  | 2.00                 | 0.00                |
| <b>Begin 13.76° tangent section</b> |                 |             |                     |            |            |                       |                       |                      |                     |
| 2,700.00                            | 13.76           | 350.77      | 2,693.06            | 83.97      | -13.65     | 21.53                 | 0.00                  | 0.00                 | 0.00                |
| 2,800.00                            | 13.76           | 350.77      | 2,790.19            | 107.45     | -17.46     | 27.55                 | 0.00                  | 0.00                 | 0.00                |
| 2,900.00                            | 13.76           | 350.77      | 2,887.32            | 130.93     | -21.28     | 33.57                 | 0.00                  | 0.00                 | 0.00                |
| 3,000.00                            | 13.76           | 350.77      | 2,984.45            | 154.41     | -25.09     | 39.59                 | 0.00                  | 0.00                 | 0.00                |
| 3,100.00                            | 13.76           | 350.77      | 3,081.58            | 177.89     | -28.91     | 45.61                 | 0.00                  | 0.00                 | 0.00                |
| 3,200.00                            | 13.76           | 350.77      | 3,178.71            | 201.37     | -32.73     | 51.63                 | 0.00                  | 0.00                 | 0.00                |
| 3,300.00                            | 13.76           | 350.77      | 3,275.84            | 224.85     | -36.54     | 57.66                 | 0.00                  | 0.00                 | 0.00                |
| 3,400.00                            | 13.76           | 350.77      | 3,372.97            | 248.33     | -40.36     | 63.68                 | 0.00                  | 0.00                 | 0.00                |
| 3,500.00                            | 13.76           | 350.77      | 3,470.10            | 271.81     | -44.17     | 69.70                 | 0.00                  | 0.00                 | 0.00                |
| 3,600.00                            | 13.76           | 350.77      | 3,567.23            | 295.29     | -47.99     | 75.72                 | 0.00                  | 0.00                 | 0.00                |
| 3,700.00                            | 13.76           | 350.77      | 3,664.36            | 318.77     | -51.80     | 81.74                 | 0.00                  | 0.00                 | 0.00                |
| 3,800.00                            | 13.76           | 350.77      | 3,761.48            | 342.25     | -55.62     | 87.76                 | 0.00                  | 0.00                 | 0.00                |
| 3,900.00                            | 13.76           | 350.77      | 3,858.61            | 365.73     | -59.44     | 93.78                 | 0.00                  | 0.00                 | 0.00                |
| 4,000.00                            | 13.76           | 350.77      | 3,955.74            | 389.21     | -63.25     | 99.80                 | 0.00                  | 0.00                 | 0.00                |
| 4,100.00                            | 13.76           | 350.77      | 4,052.87            | 412.69     | -67.07     | 105.82                | 0.00                  | 0.00                 | 0.00                |
| 4,200.00                            | 13.76           | 350.77      | 4,150.00            | 436.17     | -70.88     | 111.84                | 0.00                  | 0.00                 | 0.00                |
| 4,300.00                            | 13.76           | 350.77      | 4,247.13            | 459.65     | -74.70     | 117.86                | 0.00                  | 0.00                 | 0.00                |
| 4,400.00                            | 13.76           | 350.77      | 4,344.26            | 483.13     | -78.51     | 123.88                | 0.00                  | 0.00                 | 0.00                |
| 4,500.00                            | 13.76           | 350.77      | 4,441.39            | 506.61     | -82.33     | 129.90                | 0.00                  | 0.00                 | 0.00                |
| 4,600.00                            | 13.76           | 350.77      | 4,538.52            | 530.09     | -86.15     | 135.92                | 0.00                  | 0.00                 | 0.00                |
| 4,700.00                            | 13.76           | 350.77      | 4,635.65            | 553.57     | -89.96     | 141.94                | 0.00                  | 0.00                 | 0.00                |
| 4,800.00                            | 13.76           | 350.77      | 4,732.78            | 577.05     | -93.78     | 147.97                | 0.00                  | 0.00                 | 0.00                |
| 4,900.00                            | 13.76           | 350.77      | 4,829.91            | 600.53     | -97.59     | 153.99                | 0.00                  | 0.00                 | 0.00                |



|                  |                       |                                     |                         |
|------------------|-----------------------|-------------------------------------|-------------------------|
| <b>Database:</b> | DB_Aug0116_LT_v14     | <b>Local Co-ordinate Reference:</b> | Well Silverton 5-07-1L  |
| <b>Company:</b>  | Confluence Resources  | <b>TVD Reference:</b>               | RKB=4629+24 @ 4653.00ft |
| <b>Project:</b>  | Weld County, Colorado | <b>MD Reference:</b>                | RKB=4629+24 @ 4653.00ft |
| <b>Site:</b>     | Section 04-T04N-R63W  | <b>North Reference:</b>             | True                    |
| <b>Well:</b>     | Silverton 5-07-1L     | <b>Survey Calculation Method:</b>   | Minimum Curvature       |
| <b>Wellbore:</b> | Original Hole         |                                     |                         |
| <b>Design:</b>   | plan1                 |                                     |                         |

| Planned Survey            |                 |             |                     |            |            |                       |                       |                      |                     |
|---------------------------|-----------------|-------------|---------------------|------------|------------|-----------------------|-----------------------|----------------------|---------------------|
| Measured Depth (ft)       | Inclination (°) | Azimuth (°) | Vertical Depth (ft) | +N/-S (ft) | +E/-W (ft) | Vertical Section (ft) | Dogleg Rate (°/100ft) | Build Rate (°/100ft) | Turn Rate (°/100ft) |
| 5,000.00                  | 13.76           | 350.77      | 4,927.04            | 624.01     | -101.41    | 160.01                | 0.00                  | 0.00                 | 0.00                |
| 5,100.00                  | 13.76           | 350.77      | 5,024.17            | 647.49     | -105.23    | 166.03                | 0.00                  | 0.00                 | 0.00                |
| 5,200.00                  | 13.76           | 350.77      | 5,121.30            | 670.97     | -109.04    | 172.05                | 0.00                  | 0.00                 | 0.00                |
| 5,300.00                  | 13.76           | 350.77      | 5,218.43            | 694.45     | -112.86    | 178.07                | 0.00                  | 0.00                 | 0.00                |
| 5,400.00                  | 13.76           | 350.77      | 5,315.56            | 717.93     | -116.67    | 184.09                | 0.00                  | 0.00                 | 0.00                |
| 5,500.00                  | 13.76           | 350.77      | 5,412.69            | 741.41     | -120.49    | 190.11                | 0.00                  | 0.00                 | 0.00                |
| 5,600.00                  | 13.76           | 350.77      | 5,509.81            | 764.89     | -124.30    | 196.13                | 0.00                  | 0.00                 | 0.00                |
| 5,700.00                  | 13.76           | 350.77      | 5,606.94            | 788.37     | -128.12    | 202.15                | 0.00                  | 0.00                 | 0.00                |
| 5,800.00                  | 13.76           | 350.77      | 5,704.07            | 811.85     | -131.94    | 208.17                | 0.00                  | 0.00                 | 0.00                |
| 5,900.00                  | 13.76           | 350.77      | 5,801.20            | 835.33     | -135.75    | 214.19                | 0.00                  | 0.00                 | 0.00                |
| 5,911.39                  | 13.76           | 350.77      | 5,812.27            | 838.01     | -136.19    | 214.88                | 0.00                  | 0.00                 | 0.00                |
| Begin 10°/100' build/turn |                 |             |                     |            |            |                       |                       |                      |                     |
| 6,000.00                  | 17.44           | 320.27      | 5,897.74            | 858.67     | -146.39    | 226.99                | 10.00                 | 4.16                 | -34.42              |
| 6,100.00                  | 24.88           | 301.39      | 5,991.03            | 881.21     | -174.00    | 256.61                | 10.00                 | 7.44                 | -18.88              |
| 6,200.00                  | 33.61           | 291.30      | 6,078.26            | 902.27     | -217.85    | 302.26                | 10.00                 | 8.73                 | -10.09              |
| 6,300.00                  | 42.85           | 285.07      | 6,156.75            | 921.21     | -276.62    | 362.56                | 10.00                 | 9.24                 | -6.22               |
| 6,400.00                  | 52.33           | 280.73      | 6,224.14            | 937.47     | -348.53    | 435.68                | 10.00                 | 9.48                 | -4.35               |
| 6,500.00                  | 61.92           | 277.38      | 6,278.36            | 950.53     | -431.37    | 519.39                | 10.00                 | 9.60                 | -3.35               |
| 6,600.00                  | 71.59           | 274.58      | 6,317.79            | 960.01     | -522.64    | 611.15                | 10.00                 | 9.67                 | -2.79               |
| 6,700.00                  | 81.29           | 272.09      | 6,341.21            | 965.62     | -619.57    | 708.17                | 10.00                 | 9.70                 | -2.49               |
| 6,789.60                  | 90.00           | 269.97      | 6,348.00            | 967.21     | -708.80    | 797.15                | 10.00                 | 9.72                 | -2.37               |
| LP Begin 90° lateral      |                 |             |                     |            |            |                       |                       |                      |                     |
| 6,800.00                  | 90.00           | 269.97      | 6,348.00            | 967.21     | -719.21    | 807.51                | 0.00                  | 0.00                 | 0.00                |
| 6,900.00                  | 90.00           | 269.97      | 6,348.00            | 967.15     | -819.21    | 907.05                | 0.00                  | 0.00                 | 0.00                |
| 7,000.00                  | 90.00           | 269.97      | 6,348.00            | 967.10     | -919.21    | 1,006.60              | 0.00                  | 0.00                 | 0.00                |
| 7,100.00                  | 90.00           | 269.97      | 6,348.00            | 967.04     | -1,019.21  | 1,106.15              | 0.00                  | 0.00                 | 0.00                |
| 7,200.00                  | 90.00           | 269.97      | 6,348.00            | 966.99     | -1,119.21  | 1,205.69              | 0.00                  | 0.00                 | 0.00                |
| 7,300.00                  | 90.00           | 269.97      | 6,348.00            | 966.93     | -1,219.21  | 1,305.24              | 0.00                  | 0.00                 | 0.00                |
| 7,400.00                  | 90.00           | 269.97      | 6,348.00            | 966.88     | -1,319.21  | 1,404.78              | 0.00                  | 0.00                 | 0.00                |
| 7,500.00                  | 90.00           | 269.97      | 6,348.00            | 966.82     | -1,419.21  | 1,504.33              | 0.00                  | 0.00                 | 0.00                |
| 7,600.00                  | 90.00           | 269.97      | 6,348.00            | 966.77     | -1,519.21  | 1,603.88              | 0.00                  | 0.00                 | 0.00                |
| 7,700.00                  | 90.00           | 269.97      | 6,348.00            | 966.71     | -1,619.21  | 1,703.42              | 0.00                  | 0.00                 | 0.00                |
| 7,800.00                  | 90.00           | 269.97      | 6,348.00            | 966.66     | -1,719.21  | 1,802.97              | 0.00                  | 0.00                 | 0.00                |
| 7,900.00                  | 90.00           | 269.97      | 6,348.00            | 966.60     | -1,819.21  | 1,902.51              | 0.00                  | 0.00                 | 0.00                |
| 8,000.00                  | 90.00           | 269.97      | 6,348.00            | 966.55     | -1,919.21  | 2,002.06              | 0.00                  | 0.00                 | 0.00                |
| 8,100.00                  | 90.00           | 269.97      | 6,348.00            | 966.49     | -2,019.21  | 2,101.61              | 0.00                  | 0.00                 | 0.00                |
| 8,200.00                  | 90.00           | 269.97      | 6,348.00            | 966.44     | -2,119.21  | 2,201.15              | 0.00                  | 0.00                 | 0.00                |
| 8,300.00                  | 90.00           | 269.97      | 6,348.00            | 966.38     | -2,219.21  | 2,300.70              | 0.00                  | 0.00                 | 0.00                |
| 8,400.00                  | 90.00           | 269.97      | 6,348.00            | 966.33     | -2,319.21  | 2,400.24              | 0.00                  | 0.00                 | 0.00                |
| 8,500.00                  | 90.00           | 269.97      | 6,348.00            | 966.27     | -2,419.21  | 2,499.79              | 0.00                  | 0.00                 | 0.00                |
| 8,600.00                  | 90.00           | 269.97      | 6,348.00            | 966.22     | -2,519.21  | 2,599.34              | 0.00                  | 0.00                 | 0.00                |
| 8,700.00                  | 90.00           | 269.97      | 6,348.00            | 966.16     | -2,619.21  | 2,698.88              | 0.00                  | 0.00                 | 0.00                |
| 8,800.00                  | 90.00           | 269.97      | 6,348.00            | 966.11     | -2,719.21  | 2,798.43              | 0.00                  | 0.00                 | 0.00                |
| 8,900.00                  | 90.00           | 269.97      | 6,348.00            | 966.05     | -2,819.21  | 2,897.97              | 0.00                  | 0.00                 | 0.00                |
| 9,000.00                  | 90.00           | 269.97      | 6,348.00            | 966.00     | -2,919.21  | 2,997.52              | 0.00                  | 0.00                 | 0.00                |
| 9,100.00                  | 90.00           | 269.97      | 6,348.00            | 965.94     | -3,019.21  | 3,097.07              | 0.00                  | 0.00                 | 0.00                |
| 9,200.00                  | 90.00           | 269.97      | 6,348.00            | 965.89     | -3,119.21  | 3,196.61              | 0.00                  | 0.00                 | 0.00                |
| 9,300.00                  | 90.00           | 269.97      | 6,348.00            | 965.83     | -3,219.21  | 3,296.16              | 0.00                  | 0.00                 | 0.00                |
| 9,400.00                  | 90.00           | 269.97      | 6,348.00            | 965.78     | -3,319.21  | 3,395.70              | 0.00                  | 0.00                 | 0.00                |
| 9,500.00                  | 90.00           | 269.97      | 6,348.00            | 965.72     | -3,419.21  | 3,495.25              | 0.00                  | 0.00                 | 0.00                |
| 9,600.00                  | 90.00           | 269.97      | 6,348.00            | 965.67     | -3,519.21  | 3,594.80              | 0.00                  | 0.00                 | 0.00                |
| 9,700.00                  | 90.00           | 269.97      | 6,348.00            | 965.61     | -3,619.21  | 3,694.34              | 0.00                  | 0.00                 | 0.00                |
| 9,800.00                  | 90.00           | 269.97      | 6,348.00            | 965.56     | -3,719.21  | 3,793.89              | 0.00                  | 0.00                 | 0.00                |
| 9,900.00                  | 90.00           | 269.97      | 6,348.00            | 965.50     | -3,819.21  | 3,893.43              | 0.00                  | 0.00                 | 0.00                |

|                  |                       |                                     |                         |
|------------------|-----------------------|-------------------------------------|-------------------------|
| <b>Database:</b> | DB_Aug0116_LT_v14     | <b>Local Co-ordinate Reference:</b> | Well Silverton 5-07-1L  |
| <b>Company:</b>  | Confluence Resources  | <b>TVD Reference:</b>               | RKB=4629+24 @ 4653.00ft |
| <b>Project:</b>  | Weld County, Colorado | <b>MD Reference:</b>                | RKB=4629+24 @ 4653.00ft |
| <b>Site:</b>     | Section 04-T04N-R63W  | <b>North Reference:</b>             | True                    |
| <b>Well:</b>     | Silverton 5-07-1L     | <b>Survey Calculation Method:</b>   | Minimum Curvature       |
| <b>Wellbore:</b> | Original Hole         |                                     |                         |
| <b>Design:</b>   | plan1                 |                                     |                         |

| Planned Survey      |                 |             |                     |            |            |                       |                       |                      |                     |
|---------------------|-----------------|-------------|---------------------|------------|------------|-----------------------|-----------------------|----------------------|---------------------|
| Measured Depth (ft) | Inclination (°) | Azimuth (°) | Vertical Depth (ft) | +N/-S (ft) | +E/-W (ft) | Vertical Section (ft) | Dogleg Rate (°/100ft) | Build Rate (°/100ft) | Turn Rate (°/100ft) |
| 10,000.00           | 90.00           | 269.97      | 6,348.00            | 965.45     | -3,919.21  | 3,992.98              | 0.00                  | 0.00                 | 0.00                |
| 10,100.00           | 90.00           | 269.97      | 6,348.00            | 965.39     | -4,019.21  | 4,092.53              | 0.00                  | 0.00                 | 0.00                |
| 10,200.00           | 90.00           | 269.97      | 6,348.00            | 965.34     | -4,119.21  | 4,192.07              | 0.00                  | 0.00                 | 0.00                |
| 10,300.00           | 90.00           | 269.97      | 6,348.00            | 965.28     | -4,219.21  | 4,291.62              | 0.00                  | 0.00                 | 0.00                |
| 10,400.00           | 90.00           | 269.97      | 6,348.00            | 965.23     | -4,319.21  | 4,391.16              | 0.00                  | 0.00                 | 0.00                |
| 10,500.00           | 90.00           | 269.97      | 6,348.00            | 965.17     | -4,419.21  | 4,490.71              | 0.00                  | 0.00                 | 0.00                |
| 10,600.00           | 90.00           | 269.97      | 6,348.00            | 965.12     | -4,519.21  | 4,590.26              | 0.00                  | 0.00                 | 0.00                |
| 10,700.00           | 90.00           | 269.97      | 6,348.00            | 965.06     | -4,619.21  | 4,689.80              | 0.00                  | 0.00                 | 0.00                |
| 10,800.00           | 90.00           | 269.97      | 6,348.00            | 965.01     | -4,719.21  | 4,789.35              | 0.00                  | 0.00                 | 0.00                |
| 10,900.00           | 90.00           | 269.97      | 6,348.00            | 964.95     | -4,819.21  | 4,888.89              | 0.00                  | 0.00                 | 0.00                |
| 11,000.00           | 90.00           | 269.97      | 6,348.00            | 964.90     | -4,919.21  | 4,988.44              | 0.00                  | 0.00                 | 0.00                |
| 11,100.00           | 90.00           | 269.97      | 6,348.00            | 964.84     | -5,019.21  | 5,087.99              | 0.00                  | 0.00                 | 0.00                |
| 11,200.00           | 90.00           | 269.97      | 6,348.00            | 964.79     | -5,119.21  | 5,187.53              | 0.00                  | 0.00                 | 0.00                |
| 11,300.00           | 90.00           | 269.97      | 6,348.00            | 964.73     | -5,219.21  | 5,287.08              | 0.00                  | 0.00                 | 0.00                |
| 11,400.00           | 90.00           | 269.97      | 6,348.00            | 964.68     | -5,319.21  | 5,386.62              | 0.00                  | 0.00                 | 0.00                |
| 11,500.00           | 90.00           | 269.97      | 6,348.00            | 964.62     | -5,419.21  | 5,486.17              | 0.00                  | 0.00                 | 0.00                |
| 11,600.00           | 90.00           | 269.97      | 6,348.00            | 964.57     | -5,519.21  | 5,585.72              | 0.00                  | 0.00                 | 0.00                |
| 11,700.00           | 90.00           | 269.97      | 6,348.00            | 964.51     | -5,619.21  | 5,685.26              | 0.00                  | 0.00                 | 0.00                |
| 11,800.00           | 90.00           | 269.97      | 6,348.00            | 964.46     | -5,719.21  | 5,784.81              | 0.00                  | 0.00                 | 0.00                |
| 11,900.00           | 90.00           | 269.97      | 6,348.00            | 964.40     | -5,819.21  | 5,884.35              | 0.00                  | 0.00                 | 0.00                |
| 12,000.00           | 90.00           | 269.97      | 6,348.00            | 964.35     | -5,919.21  | 5,983.90              | 0.00                  | 0.00                 | 0.00                |
| 12,100.00           | 90.00           | 269.97      | 6,348.00            | 964.29     | -6,019.21  | 6,083.45              | 0.00                  | 0.00                 | 0.00                |
| 12,200.00           | 90.00           | 269.97      | 6,348.00            | 964.24     | -6,119.20  | 6,182.99              | 0.00                  | 0.00                 | 0.00                |
| 12,300.00           | 90.00           | 269.97      | 6,348.00            | 964.18     | -6,219.20  | 6,282.54              | 0.00                  | 0.00                 | 0.00                |
| 12,400.00           | 90.00           | 269.97      | 6,348.00            | 964.13     | -6,319.20  | 6,382.08              | 0.00                  | 0.00                 | 0.00                |
| 12,500.00           | 90.00           | 269.97      | 6,348.00            | 964.07     | -6,419.20  | 6,481.63              | 0.00                  | 0.00                 | 0.00                |
| 12,600.00           | 90.00           | 269.97      | 6,348.00            | 964.02     | -6,519.20  | 6,581.18              | 0.00                  | 0.00                 | 0.00                |
| 12,700.00           | 90.00           | 269.97      | 6,348.00            | 963.96     | -6,619.20  | 6,680.72              | 0.00                  | 0.00                 | 0.00                |
| 12,800.00           | 90.00           | 269.97      | 6,348.00            | 963.91     | -6,719.20  | 6,780.27              | 0.00                  | 0.00                 | 0.00                |
| 12,900.00           | 90.00           | 269.97      | 6,348.00            | 963.85     | -6,819.20  | 6,879.81              | 0.00                  | 0.00                 | 0.00                |
| 13,000.00           | 90.00           | 269.97      | 6,348.00            | 963.80     | -6,919.20  | 6,979.36              | 0.00                  | 0.00                 | 0.00                |
| 13,100.00           | 90.00           | 269.97      | 6,348.00            | 963.74     | -7,019.20  | 7,078.91              | 0.00                  | 0.00                 | 0.00                |
| 13,200.00           | 90.00           | 269.97      | 6,348.00            | 963.69     | -7,119.20  | 7,178.45              | 0.00                  | 0.00                 | 0.00                |
| 13,300.00           | 90.00           | 269.97      | 6,348.00            | 963.63     | -7,219.20  | 7,278.00              | 0.00                  | 0.00                 | 0.00                |
| 13,400.00           | 90.00           | 269.97      | 6,348.00            | 963.58     | -7,319.20  | 7,377.54              | 0.00                  | 0.00                 | 0.00                |
| 13,500.00           | 90.00           | 269.97      | 6,348.00            | 963.52     | -7,419.20  | 7,477.09              | 0.00                  | 0.00                 | 0.00                |
| 13,600.00           | 90.00           | 269.97      | 6,348.00            | 963.47     | -7,519.20  | 7,576.64              | 0.00                  | 0.00                 | 0.00                |
| 13,700.00           | 90.00           | 269.97      | 6,348.00            | 963.41     | -7,619.20  | 7,676.18              | 0.00                  | 0.00                 | 0.00                |
| 13,800.00           | 90.00           | 269.97      | 6,348.00            | 963.36     | -7,719.20  | 7,775.73              | 0.00                  | 0.00                 | 0.00                |
| 13,900.00           | 90.00           | 269.97      | 6,348.00            | 963.30     | -7,819.20  | 7,875.27              | 0.00                  | 0.00                 | 0.00                |
| 14,000.00           | 90.00           | 269.97      | 6,348.00            | 963.25     | -7,919.20  | 7,974.82              | 0.00                  | 0.00                 | 0.00                |
| 14,100.00           | 90.00           | 269.97      | 6,348.00            | 963.19     | -8,019.20  | 8,074.37              | 0.00                  | 0.00                 | 0.00                |
| 14,200.00           | 90.00           | 269.97      | 6,348.00            | 963.14     | -8,119.20  | 8,173.91              | 0.00                  | 0.00                 | 0.00                |
| 14,300.00           | 90.00           | 269.97      | 6,348.00            | 963.08     | -8,219.20  | 8,273.46              | 0.00                  | 0.00                 | 0.00                |
| 14,400.00           | 90.00           | 269.97      | 6,348.00            | 963.03     | -8,319.20  | 8,373.00              | 0.00                  | 0.00                 | 0.00                |
| 14,500.00           | 90.00           | 269.97      | 6,348.00            | 962.97     | -8,419.20  | 8,472.55              | 0.00                  | 0.00                 | 0.00                |
| 14,600.00           | 90.00           | 269.97      | 6,348.00            | 962.92     | -8,519.20  | 8,572.10              | 0.00                  | 0.00                 | 0.00                |
| 14,700.00           | 90.00           | 269.97      | 6,348.00            | 962.86     | -8,619.20  | 8,671.64              | 0.00                  | 0.00                 | 0.00                |
| 14,800.00           | 90.00           | 269.97      | 6,348.00            | 962.81     | -8,719.20  | 8,771.19              | 0.00                  | 0.00                 | 0.00                |
| 14,900.00           | 90.00           | 269.97      | 6,348.00            | 962.75     | -8,819.20  | 8,870.73              | 0.00                  | 0.00                 | 0.00                |
| 15,000.00           | 90.00           | 269.97      | 6,348.00            | 962.70     | -8,919.20  | 8,970.28              | 0.00                  | 0.00                 | 0.00                |
| 15,100.00           | 90.00           | 269.97      | 6,348.00            | 962.64     | -9,019.20  | 9,069.83              | 0.00                  | 0.00                 | 0.00                |
| 15,200.00           | 90.00           | 269.97      | 6,348.00            | 962.59     | -9,119.20  | 9,169.37              | 0.00                  | 0.00                 | 0.00                |
| 15,300.00           | 90.00           | 269.97      | 6,348.00            | 962.53     | -9,219.20  | 9,268.92              | 0.00                  | 0.00                 | 0.00                |

|                  |                       |                                     |                         |
|------------------|-----------------------|-------------------------------------|-------------------------|
| <b>Database:</b> | DB_Aug0116_LT_v14     | <b>Local Co-ordinate Reference:</b> | Well Silverton 5-07-1L  |
| <b>Company:</b>  | Confluence Resources  | <b>TVD Reference:</b>               | RKB=4629+24 @ 4653.00ft |
| <b>Project:</b>  | Weld County, Colorado | <b>MD Reference:</b>                | RKB=4629+24 @ 4653.00ft |
| <b>Site:</b>     | Section 04-T04N-R63W  | <b>North Reference:</b>             | True                    |
| <b>Well:</b>     | Silverton 5-07-1L     | <b>Survey Calculation Method:</b>   | Minimum Curvature       |
| <b>Wellbore:</b> | Original Hole         |                                     |                         |
| <b>Design:</b>   | plan1                 |                                     |                         |

| Planned Survey                  |                 |             |                     |            |            |                       |                       |                      |                     |  |
|---------------------------------|-----------------|-------------|---------------------|------------|------------|-----------------------|-----------------------|----------------------|---------------------|--|
| Measured Depth (ft)             | Inclination (°) | Azimuth (°) | Vertical Depth (ft) | +N/-S (ft) | +E/-W (ft) | Vertical Section (ft) | Dogleg Rate (°/100ft) | Build Rate (°/100ft) | Turn Rate (°/100ft) |  |
| 15,400.00                       | 90.00           | 269.97      | 6,348.00            | 962.48     | -9,319.20  | 9,368.46              | 0.00                  | 0.00                 | 0.00                |  |
| 15,500.00                       | 90.00           | 269.97      | 6,348.00            | 962.42     | -9,419.20  | 9,468.01              | 0.00                  | 0.00                 | 0.00                |  |
| 15,600.00                       | 90.00           | 269.97      | 6,348.00            | 962.37     | -9,519.20  | 9,567.56              | 0.00                  | 0.00                 | 0.00                |  |
| 15,700.00                       | 90.00           | 269.97      | 6,348.00            | 962.31     | -9,619.20  | 9,667.10              | 0.00                  | 0.00                 | 0.00                |  |
| 15,800.00                       | 90.00           | 269.97      | 6,348.00            | 962.26     | -9,719.20  | 9,766.65              | 0.00                  | 0.00                 | 0.00                |  |
| 15,900.00                       | 90.00           | 269.97      | 6,348.00            | 962.20     | -9,819.20  | 9,866.19              | 0.00                  | 0.00                 | 0.00                |  |
| 16,000.00                       | 90.00           | 269.97      | 6,348.00            | 962.15     | -9,919.20  | 9,965.74              | 0.00                  | 0.00                 | 0.00                |  |
| 16,100.00                       | 90.00           | 269.97      | 6,348.00            | 962.09     | -10,019.20 | 10,065.29             | 0.00                  | 0.00                 | 0.00                |  |
| 16,200.00                       | 90.00           | 269.97      | 6,348.00            | 962.04     | -10,119.20 | 10,164.83             | 0.00                  | 0.00                 | 0.00                |  |
| 16,201.19                       | 90.00           | 269.97      | 6,348.00            | 962.04     | -10,120.39 | 10,166.02             | 0.00                  | 0.00                 | 0.00                |  |
| PBHL/TD 16201.19 MD 6348.00 TVD |                 |             |                     |            |            |                       |                       |                      |                     |  |

| Design Targets  |               |              |          |            |            |                 |                |             |               |  |
|---|---------------|--------------|----------|------------|------------|-----------------|----------------|-------------|---------------|--|
| Target Name<br>- hit/miss target<br>- Shape                       | Dip Angle (°) | Dip Dir. (°) | TVD (ft) | +N/-S (ft) | +E/-W (ft) | Northing (usft) | Easting (usft) | Latitude    | Longitude     |  |
| Silverton 5-07-1L SL 269°<br>- plan hits target center<br>- Point | 0.00          | 0.00         | 24.00    | 0.00       | 0.00       | 14,651,451.40   | 1,793,251.82   | 40.34118899 | -104.45152128 |  |
| Silverton 5-07-1L BHL 1°<br>- plan hits target center<br>- Point  | 0.00          | 0.00         | 6,348.00 | 962.04     | -10,120.39 | 14,652,350.70   | 1,783,125.68   | 40.34382500 | -104.48784080 |  |
| Silverton 5-07-1L LP 177°<br>- plan hits target center<br>- Point | 0.00          | 0.00         | 6,348.00 | 967.21     | -708.80    | 14,652,414.20   | 1,792,537.04   | 40.34384489 | -104.45406499 |  |

| Plan Annotations    |                     |                   |            |                                 |  |
|---------------------|---------------------|-------------------|------------|---------------------------------|--|
| Measured Depth (ft) | Vertical Depth (ft) | Local Coordinates |            |                                 |  |
|                     |                     | +N/-S (ft)        | +E/-W (ft) | Comment                         |  |
| 2,000.00            | 2,000.00            | 0.00              | 0.00       | KOP Begin 2°/100' build         |  |
| 2,688.08            | 2,681.48            | 81.17             | -13.19     | Begin 13.76° tangent section    |  |
| 5,911.39            | 5,812.27            | 838.01            | -136.19    | Begin 10°/100' build/turn       |  |
| 6,789.60            | 6,348.00            | 967.21            | -708.80    | LP Begin 90° lateral            |  |
| 16,201.19           | 6,348.00            | 962.04            | -10,120.39 | PBHL/TD 16201.19 MD 6348.00 TVD |  |