



Well: Silverton 5-10-1L  
Site: Section 04-T04N-R63W  
Project: Weld County, Colorado  
Wellbore: Original Hole  
Design: plan1

#### Section Details

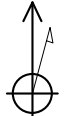
Sec	MD	Inc	Azi	TVD	+N/-S	+E/-W	Dleg	VSec	Annotation
1	0.00	0.00	0.00	0.00	0.00	0.00	0.00	0.00	
2	2000.00	0.00	0.00	2000.00	0.00	0.00	0.00	0.00	KOP Begin 2°/100' build
3	2304.58	6.09	338.11	2304.01	15.01	-6.03	2.00	6.64	Begin 6.09° tangent section
4	5830.84	6.09	338.11	5810.36	362.23	-145.55	0.00	160.12	Begin 10°/100' build/turn
5	6708.20	90.00	269.97	6358.00	416.16	-718.09	10.00	734.38	LP Begin 90° lateral
6	16111.87	90.00	269.97	6358.00	411.03	-10121.76	0.00	10130.10	PBHL/TD 16111.87 MD 6358.00 TVD

#### DESIGN TARGET DETAILS

Name	TVD	+N/-S	+E/-W	Northing	Easting	Latitude	Longitude
Silverton 5-10-1L SL 2598 FSL 255 FWL	24.00	0.00	0.00	14651351.40	1793250.75	40.34091443	-104.45152734
Silverton 5-10-1L BHL 2423 FNL 470 FWL	6358.00	411.03	-10121.76	14651699.70	1783126.66	40.34203740	-104.48785081
Silverton 5-10-1L LP 2423 FNL 470 FEL	6358.00	416.16	-718.09	14651763.10	1792530.10	40.34205715	-104.45410430

Silverton 5-10-1L Surf loc: 2598 FSL 255 FWL Section 04-T04N-R63W			
NAD83 Colorado - HARN Universal Transverse Mercator (US Survey Feet) Zone 13N (108 W to 102 W) RKB=4631+24 @ 4655.00ft			
Northing	Easting	Latitude	Longitude
14651351.40	1793250.75	40.34091443	-104.45152734

T M

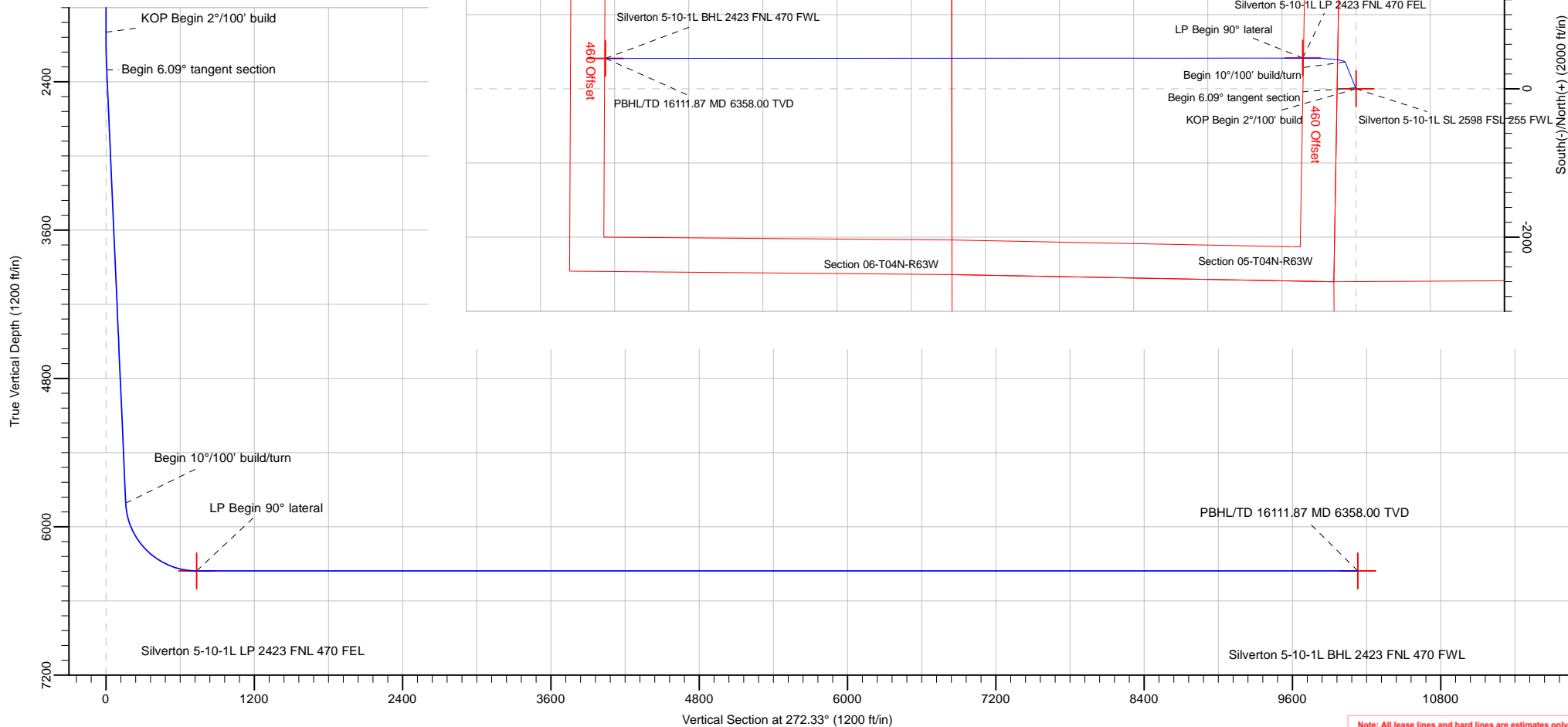


Azimuths to True North  
Magnetic North: 8.08°

Magnetic Field  
Strength: 52227.8snT  
Dip Angle: 66.90°  
Date: 5/29/2018  
Model: HDGM



PRODIRECTIONAL



Note: All lease lines and hard lines are estimates only and are subject to customers approval.

<b>Database:</b>	DB_Aug0116_LT_v14	<b>Local Co-ordinate Reference:</b>	Well Silverton 5-10-1L
<b>Company:</b>	Confluence Resources	<b>TVD Reference:</b>	RKB=4631+24 @ 4655.00ft
<b>Project:</b>	Weld County, Colorado	<b>MD Reference:</b>	RKB=4631+24 @ 4655.00ft
<b>Site:</b>	Section 04-T04N-R63W	<b>North Reference:</b>	True
<b>Well:</b>	Silverton 5-10-1L	<b>Survey Calculation Method:</b>	Minimum Curvature
<b>Wellbore:</b>	Original Hole		
<b>Design:</b>	plan1		

<b>Project</b>	Weld County, Colorado		
<b>Map System:</b>	Universal Transverse Mercator (US Survey Feet)	<b>System Datum:</b>	Mean Sea Level
<b>Geo Datum:</b>	NAD83 Colorado - HARN		
<b>Map Zone:</b>	Zone 13N (108 W to 102 W)		

Site		Section 04-T04N-R63W			
Site Position:		Northing:	14,650,073.90 usft	Latitude:	40.33740565
From:	Map	Easting:	1,793,302.13 usft	Longitude:	-104.45137138
Position Uncertainty:	0.00 ft	Slot Radius:	13-3/16 "	Grid Convergence:	0.36 °

Well	Silverton 5-10-1L, Surf loc: 2598 FSL 255 FWL Section 04-T04N-R63W					
Well Position	+N/-S	0.00 ft	Northing:	14,651,351.40 usft	Latitude:	40.34091442
	+E/-W	0.00 ft	Easting:	1,793,250.75 usft	Longitude:	-104.45152735
Position Uncertainty		0.00 ft	Wellhead Elevation:		Ground Level:	4,631.00 ft

<b>Wellbore</b>	Original Hole				
<b>Magnetics</b>	<b>Model Name</b>	<b>Sample Date</b>	<b>Declination (°)</b>	<b>Dip Angle (°)</b>	<b>Field Strength (nT)</b>
	HDGM	5/29/2018	8.08	66.90	52,227.80000000

<b>Design</b>	plan1			
<b>Audit Notes:</b>				
<b>Version:</b>	<b>Phase:</b>	PLAN	<b>Tie On Depth:</b>	0.00
<b>Vertical Section:</b>	<b>Depth From (TVD) (ft)</b>	<b>+N/-S (ft)</b>	<b>+E/-W (ft)</b>	<b>Direction (°)</b>
	0.00	0.00	0.00	272.33

<b>Plan Survey Tool Program</b>	<b>Date</b>	5/29/2018		
<b>Depth From (ft)</b>	<b>Depth To (ft)</b>	<b>Survey (Wellbore)</b>	<b>Tool Name</b>	<b>Remarks</b>
1	0.00	16,111.87 plan1 (Original Hole)		

<b>Plan Sections</b>										
<b>Measured Depth (ft)</b>	<b>Inclination (°)</b>	<b>Azimuth (°)</b>	<b>Vertical Depth (ft)</b>	<b>+N/-S (ft)</b>	<b>+E/-W (ft)</b>	<b>Dogleg Rate (°/100ft)</b>	<b>Build Rate (°/100ft)</b>	<b>Turn Rate (°/100ft)</b>	<b>TFO (°)</b>	<b>Target</b>
0.00	0.00	0.00	0.00	0.00	0.00	0.00	0.00	0.00	0.00	
2,000.00	0.00	0.00	2,000.00	0.00	0.00	0.00	0.00	0.00	0.00	
2,304.58	6.09	338.11	2,304.01	15.01	-6.03	2.00	2.00	0.00	338.11	
5,830.84	6.09	338.11	5,810.36	362.23	-145.55	0.00	0.00	0.00	0.00	
6,708.20	90.00	269.97	6,358.00	416.16	-718.09	10.00	9.56	-7.77	-68.25	Silverton 5-10-1L LP 2
16,111.87	90.00	269.97	6,358.00	411.03	-10,121.76	0.00	0.00	0.00	0.00	Silverton 5-10-1L BHL

<b>Database:</b>	DB_Aug0116_LT_v14	<b>Local Co-ordinate Reference:</b>	Well Silverton 5-10-1L
<b>Company:</b>	Confluence Resources	<b>TVD Reference:</b>	RKB=4631+24 @ 4655.00ft
<b>Project:</b>	Weld County, Colorado	<b>MD Reference:</b>	RKB=4631+24 @ 4655.00ft
<b>Site:</b>	Section 04-T04N-R63W	<b>North Reference:</b>	True
<b>Well:</b>	Silverton 5-10-1L	<b>Survey Calculation Method:</b>	Minimum Curvature
<b>Wellbore:</b>	Original Hole		
<b>Design:</b>	plan1		

Planned Survey									
Measured Depth (ft)	Inclination (°)	Azimuth (°)	Vertical Depth (ft)	+N/-S (ft)	+E/-W (ft)	Map Northing (usft)	Map Easting (usft)	Latitude	Longitude
0.00	0.00	0.00	0.00	0.00	0.00	14,651,351.40	1,793,250.75	40.34091442	-104.45152735
100.00	0.00	0.00	100.00	0.00	0.00	14,651,351.40	1,793,250.75	40.34091442	-104.45152735
200.00	0.00	0.00	200.00	0.00	0.00	14,651,351.40	1,793,250.75	40.34091442	-104.45152735
300.00	0.00	0.00	300.00	0.00	0.00	14,651,351.40	1,793,250.75	40.34091442	-104.45152735
400.00	0.00	0.00	400.00	0.00	0.00	14,651,351.40	1,793,250.75	40.34091442	-104.45152735
500.00	0.00	0.00	500.00	0.00	0.00	14,651,351.40	1,793,250.75	40.34091442	-104.45152735
600.00	0.00	0.00	600.00	0.00	0.00	14,651,351.40	1,793,250.75	40.34091442	-104.45152735
700.00	0.00	0.00	700.00	0.00	0.00	14,651,351.40	1,793,250.75	40.34091442	-104.45152735
800.00	0.00	0.00	800.00	0.00	0.00	14,651,351.40	1,793,250.75	40.34091442	-104.45152735
900.00	0.00	0.00	900.00	0.00	0.00	14,651,351.40	1,793,250.75	40.34091442	-104.45152735
1,000.00	0.00	0.00	1,000.00	0.00	0.00	14,651,351.40	1,793,250.75	40.34091442	-104.45152735
1,100.00	0.00	0.00	1,100.00	0.00	0.00	14,651,351.40	1,793,250.75	40.34091442	-104.45152735
1,200.00	0.00	0.00	1,200.00	0.00	0.00	14,651,351.40	1,793,250.75	40.34091442	-104.45152735
1,300.00	0.00	0.00	1,300.00	0.00	0.00	14,651,351.40	1,793,250.75	40.34091442	-104.45152735
1,400.00	0.00	0.00	1,400.00	0.00	0.00	14,651,351.40	1,793,250.75	40.34091442	-104.45152735
1,500.00	0.00	0.00	1,500.00	0.00	0.00	14,651,351.40	1,793,250.75	40.34091442	-104.45152735
1,600.00	0.00	0.00	1,600.00	0.00	0.00	14,651,351.40	1,793,250.75	40.34091442	-104.45152735
1,700.00	0.00	0.00	1,700.00	0.00	0.00	14,651,351.40	1,793,250.75	40.34091442	-104.45152735
1,800.00	0.00	0.00	1,800.00	0.00	0.00	14,651,351.40	1,793,250.75	40.34091442	-104.45152735
1,900.00	0.00	0.00	1,900.00	0.00	0.00	14,651,351.40	1,793,250.75	40.34091442	-104.45152735
2,000.00	0.00	0.00	2,000.00	0.00	0.00	14,651,351.40	1,793,250.75	40.34091442	-104.45152735
<b>KOP Begin 2°/100' build</b>									
2,100.00	2.00	338.11	2,099.98	1.62	-0.65	14,651,353.01	1,793,250.09	40.34091887	-104.45152968
2,200.00	4.00	338.11	2,199.84	6.48	-2.60	14,651,357.86	1,793,248.11	40.34093220	-104.45153668
2,300.00	6.00	338.11	2,299.45	14.56	-5.85	14,651,365.92	1,793,244.81	40.34095441	-104.45154834
2,304.58	6.09	338.11	2,304.01	15.01	-6.03	14,651,366.37	1,793,244.63	40.34095564	-104.45154899
<b>Begin 6.09° tangent section</b>									
2,400.00	6.09	338.11	2,398.89	24.41	-9.81	14,651,375.74	1,793,240.79	40.34098144	-104.45156254
2,500.00	6.09	338.11	2,498.32	34.25	-13.76	14,651,385.56	1,793,236.78	40.34100847	-104.45157674
2,600.00	6.09	338.11	2,597.76	44.10	-17.72	14,651,395.39	1,793,232.76	40.34103551	-104.45159093
2,700.00	6.09	338.11	2,697.19	53.95	-21.68	14,651,405.21	1,793,228.74	40.34106255	-104.45160513
2,800.00	6.09	338.11	2,796.63	63.79	-25.63	14,651,415.03	1,793,224.72	40.34108959	-104.45161933
2,900.00	6.09	338.11	2,896.06	73.64	-29.59	14,651,424.85	1,793,220.71	40.34111663	-104.45163353
3,000.00	6.09	338.11	2,995.50	83.49	-33.55	14,651,434.67	1,793,216.69	40.34114367	-104.45164773
3,100.00	6.09	338.11	3,094.94	93.33	-37.50	14,651,444.49	1,793,212.67	40.34117071	-104.45166193
3,200.00	6.09	338.11	3,194.37	103.18	-41.46	14,651,454.32	1,793,208.65	40.34119774	-104.45167612
3,300.00	6.09	338.11	3,293.81	113.03	-45.41	14,651,464.14	1,793,204.64	40.34122478	-104.45169032
3,400.00	6.09	338.11	3,393.24	122.87	-49.37	14,651,473.96	1,793,200.62	40.34125182	-104.45170452
3,500.00	6.09	338.11	3,492.68	132.72	-53.33	14,651,483.78	1,793,196.60	40.34127886	-104.45171872
3,600.00	6.09	338.11	3,592.11	142.57	-57.28	14,651,493.60	1,793,192.58	40.34130590	-104.45173292
3,700.00	6.09	338.11	3,691.55	152.41	-61.24	14,651,503.43	1,793,188.57	40.34133294	-104.45174712
3,800.00	6.09	338.11	3,790.98	162.26	-65.20	14,651,513.25	1,793,184.55	40.34135997	-104.45176131
3,900.00	6.09	338.11	3,890.42	172.11	-69.15	14,651,523.07	1,793,180.53	40.34138701	-104.45177551
4,000.00	6.09	338.11	3,989.85	181.95	-73.11	14,651,532.89	1,793,176.51	40.34141405	-104.45178971
4,100.00	6.09	338.11	4,089.29	191.80	-77.07	14,651,542.71	1,793,172.50	40.34144109	-104.45180391
4,200.00	6.09	338.11	4,188.72	201.65	-81.02	14,651,552.54	1,793,168.48	40.34146813	-104.45181811
4,300.00	6.09	338.11	4,288.16	211.49	-84.98	14,651,562.36	1,793,164.46	40.34149517	-104.45183231
4,400.00	6.09	338.11	4,387.59	221.34	-88.94	14,651,572.18	1,793,160.44	40.34152220	-104.45184650
4,500.00	6.09	338.11	4,487.03	231.19	-92.89	14,651,582.00	1,793,156.43	40.34154924	-104.45186070
4,600.00	6.09	338.11	4,586.47	241.03	-96.85	14,651,591.82	1,793,152.41	40.34157628	-104.45187490
4,700.00	6.09	338.11	4,685.90	250.88	-100.80	14,651,601.65	1,793,148.39	40.34160332	-104.45188910
4,800.00	6.09	338.11	4,785.34	260.72	-104.76	14,651,611.47	1,793,144.38	40.34163036	-104.45190330
4,900.00	6.09	338.11	4,884.77	270.57	-108.72	14,651,621.29	1,793,140.36	40.34165740	-104.45191750
5,000.00	6.09	338.11	4,984.21	280.42	-112.67	14,651,631.11	1,793,136.34	40.34168443	-104.45193169

<b>Database:</b>	DB_Aug0116_LT_v14	<b>Local Co-ordinate Reference:</b>	Well Silverton 5-10-1L
<b>Company:</b>	Confluence Resources	<b>TVD Reference:</b>	RKB=4631+24 @ 4655.00ft
<b>Project:</b>	Weld County, Colorado	<b>MD Reference:</b>	RKB=4631+24 @ 4655.00ft
<b>Site:</b>	Section 04-T04N-R63W	<b>North Reference:</b>	True
<b>Well:</b>	Silverton 5-10-1L	<b>Survey Calculation Method:</b>	Minimum Curvature
<b>Wellbore:</b>	Original Hole		
<b>Design:</b>	plan1		

Planned Survey									
Measured Depth (ft)	Inclination (°)	Azimuth (°)	Vertical Depth (ft)	+N/-S (ft)	+E/-W (ft)	Map Northing (usft)	Map Easting (usft)	Latitude	Longitude
5,100.00	6.09	338.11	5,083.64	290.26	-116.63	14,651,640.93	1,793,132.32	40.34171147	-104.45194589
5,200.00	6.09	338.11	5,183.08	300.11	-120.59	14,651,650.76	1,793,128.31	40.34173851	-104.45196009
5,300.00	6.09	338.11	5,282.51	309.96	-124.54	14,651,660.58	1,793,124.29	40.34176555	-104.45197429
5,400.00	6.09	338.11	5,381.95	319.80	-128.50	14,651,670.40	1,793,120.27	40.34179259	-104.45198849
5,500.00	6.09	338.11	5,481.38	329.65	-132.46	14,651,680.22	1,793,116.25	40.34181963	-104.45200269
5,600.00	6.09	338.11	5,580.82	339.50	-136.41	14,651,690.04	1,793,112.24	40.34184667	-104.45201688
5,700.00	6.09	338.11	5,680.25	349.34	-140.37	14,651,699.87	1,793,108.22	40.34187370	-104.45203108
5,800.00	6.09	338.11	5,779.69	359.19	-144.33	14,651,709.69	1,793,104.20	40.34190074	-104.45204528
5,830.84	6.09	338.11	5,810.36	362.23	-145.55	14,651,712.72	1,793,102.96	40.34190908	-104.45204966
Begin 10°/100' build/turn									
5,900.00	10.77	301.35	5,878.79	369.00	-152.44	14,651,719.45	1,793,096.03	40.34192768	-104.45207440
6,000.00	19.97	285.79	5,975.15	378.53	-176.91	14,651,728.83	1,793,071.50	40.34195385	-104.45216222
6,100.00	29.68	279.98	6,065.82	387.49	-217.83	14,651,737.53	1,793,030.53	40.34197845	-104.45230905
6,200.00	39.52	276.86	6,148.04	395.61	-273.94	14,651,745.30	1,792,974.37	40.34200073	-104.45251041
6,300.00	49.42	274.84	6,219.32	402.63	-343.54	14,651,751.89	1,792,904.72	40.34202001	-104.45276021
6,400.00	59.35	273.33	6,277.48	408.34	-424.53	14,651,757.10	1,792,823.70	40.34203570	-104.45305084
6,500.00	69.29	272.12	6,320.77	412.58	-514.44	14,651,760.78	1,792,733.77	40.34204734	-104.45337348
6,600.00	79.23	271.05	6,347.86	415.21	-610.53	14,651,762.82	1,792,637.66	40.34205456	-104.45371832
6,700.00	89.18	270.05	6,357.94	416.16	-709.89	14,651,763.15	1,792,538.30	40.34205714	-104.45407488
6,708.20	90.00	269.97	6,358.00	416.16	-718.09	14,651,763.10	1,792,530.10	40.34205714	-104.45410431
LP Begin 90° lateral									
6,800.00	90.00	269.97	6,358.00	416.11	-809.89	14,651,762.48	1,792,438.30	40.34205700	-104.45443374
6,900.00	90.00	269.97	6,358.00	416.05	-909.89	14,651,761.80	1,792,338.31	40.34205684	-104.45479261
7,000.00	90.00	269.97	6,358.00	416.00	-1,009.89	14,651,761.13	1,792,238.31	40.34205668	-104.45515147
7,100.00	90.00	269.97	6,358.00	415.95	-1,109.89	14,651,760.46	1,792,138.31	40.34205652	-104.45551034
7,200.00	90.00	269.97	6,358.00	415.89	-1,209.89	14,651,759.78	1,792,038.31	40.34205635	-104.45586920
7,300.00	90.00	269.97	6,358.00	415.84	-1,309.89	14,651,759.11	1,791,938.32	40.34205619	-104.45622807
7,400.00	90.00	269.97	6,358.00	415.78	-1,409.89	14,651,758.43	1,791,838.32	40.34205603	-104.45658693
7,500.00	90.00	269.97	6,358.00	415.73	-1,509.89	14,651,757.76	1,791,738.32	40.34205586	-104.45694580
7,600.00	90.00	269.97	6,358.00	415.67	-1,609.89	14,651,757.08	1,791,638.32	40.34205569	-104.45730466
7,700.00	90.00	269.97	6,358.00	415.62	-1,709.89	14,651,756.41	1,791,538.32	40.34205553	-104.45766353
7,800.00	90.00	269.97	6,358.00	415.56	-1,809.89	14,651,755.74	1,791,438.33	40.34205536	-104.45802239
7,900.00	90.00	269.97	6,358.00	415.51	-1,909.89	14,651,755.06	1,791,338.33	40.34205519	-104.45838126
8,000.00	90.00	269.97	6,358.00	415.45	-2,009.89	14,651,754.39	1,791,238.33	40.34205501	-104.45874012
8,100.00	90.00	269.97	6,358.00	415.40	-2,109.89	14,651,753.71	1,791,138.33	40.34205484	-104.45909898
8,200.00	90.00	269.97	6,358.00	415.35	-2,209.89	14,651,753.04	1,791,038.34	40.34205467	-104.45945785
8,300.00	90.00	269.97	6,358.00	415.29	-2,309.89	14,651,752.37	1,790,938.34	40.34205449	-104.45981671
8,400.00	90.00	269.97	6,358.00	415.24	-2,409.89	14,651,751.69	1,790,838.34	40.34205432	-104.46017558
8,500.00	90.00	269.97	6,358.00	415.18	-2,509.89	14,651,751.02	1,790,738.34	40.34205414	-104.46053444
8,600.00	90.00	269.97	6,358.00	415.13	-2,609.89	14,651,750.34	1,790,638.35	40.34205396	-104.46089331
8,700.00	90.00	269.97	6,358.00	415.07	-2,709.89	14,651,749.67	1,790,538.35	40.34205378	-104.46125217
8,800.00	90.00	269.97	6,358.00	415.02	-2,809.89	14,651,748.99	1,790,438.35	40.34205360	-104.46161104
8,900.00	90.00	269.97	6,358.00	414.96	-2,909.89	14,651,748.32	1,790,338.35	40.34205342	-104.46196990
9,000.00	90.00	269.97	6,358.00	414.91	-3,009.89	14,651,747.65	1,790,238.36	40.34205324	-104.46232877
9,100.00	90.00	269.97	6,358.00	414.86	-3,109.89	14,651,746.97	1,790,138.36	40.34205305	-104.46268763
9,200.00	90.00	269.97	6,358.00	414.80	-3,209.89	14,651,746.30	1,790,038.36	40.34205287	-104.46304650
9,300.00	90.00	269.97	6,358.00	414.75	-3,309.89	14,651,745.62	1,789,938.36	40.34205268	-104.46340536
9,400.00	90.00	269.97	6,358.00	414.69	-3,409.89	14,651,744.95	1,789,838.37	40.34205250	-104.46376423
9,500.00	90.00	269.97	6,358.00	414.64	-3,509.89	14,651,744.28	1,789,738.37	40.34205231	-104.46412309
9,600.00	90.00	269.97	6,358.00	414.58	-3,609.89	14,651,743.60	1,789,638.37	40.34205212	-104.46448196
9,700.00	90.00	269.97	6,358.00	414.53	-3,709.89	14,651,742.93	1,789,538.37	40.34205193	-104.46484082
9,800.00	90.00	269.97	6,358.00	414.47	-3,809.89	14,651,742.25	1,789,438.38	40.34205174	-104.46519969
9,900.00	90.00	269.97	6,358.00	414.42	-3,909.89	14,651,741.58	1,789,338.38	40.34205154	-104.46555855
10,000.00	90.00	269.97	6,358.00	414.37	-4,009.89	14,651,740.90	1,789,238.38	40.34205135	-104.46591742



<b>Database:</b>	DB_Aug0116_LT_v14	<b>Local Co-ordinate Reference:</b>	Well Silverton 5-10-1L
<b>Company:</b>	Confluence Resources	<b>TVD Reference:</b>	RKB=4631+24 @ 4655.00ft
<b>Project:</b>	Weld County, Colorado	<b>MD Reference:</b>	RKB=4631+24 @ 4655.00ft
<b>Site:</b>	Section 04-T04N-R63W	<b>North Reference:</b>	True
<b>Well:</b>	Silverton 5-10-1L	<b>Survey Calculation Method:</b>	Minimum Curvature
<b>Wellbore:</b>	Original Hole		
<b>Design:</b>	plan1		

Planned Survey									
Measured Depth (ft)	Inclination (°)	Azimuth (°)	Vertical Depth (ft)	+N/-S (ft)	+E/-W (ft)	Map Northing (usft)	Map Easting (usft)	Latitude	Longitude
10,100.00	90.00	269.97	6,358.00	414.31	-4,109.89	14,651,740.23	1,789,138.38	40.34205115	-104.46627628
10,200.00	90.00	269.97	6,358.00	414.26	-4,209.89	14,651,739.56	1,789,038.39	40.34205096	-104.46663515
10,300.00	90.00	269.97	6,358.00	414.20	-4,309.89	14,651,738.88	1,788,938.39	40.34205076	-104.46699401
10,400.00	90.00	269.97	6,358.00	414.15	-4,409.89	14,651,738.21	1,788,838.39	40.34205056	-104.46735288
10,500.00	90.00	269.97	6,358.00	414.09	-4,509.89	14,651,737.53	1,788,738.39	40.34205036	-104.46771174
10,600.00	90.00	269.97	6,358.00	414.04	-4,609.89	14,651,736.86	1,788,638.40	40.34205016	-104.46807061
10,700.00	90.00	269.97	6,358.00	413.98	-4,709.89	14,651,736.18	1,788,538.40	40.34204996	-104.46842947
10,800.00	90.00	269.97	6,358.00	413.93	-4,809.89	14,651,735.51	1,788,438.40	40.34204976	-104.46878834
10,900.00	90.00	269.97	6,358.00	413.87	-4,909.89	14,651,734.84	1,788,338.40	40.34204956	-104.46914720
11,000.00	90.00	269.97	6,358.00	413.82	-5,009.89	14,651,734.16	1,788,238.41	40.34204935	-104.46950607
11,100.00	90.00	269.97	6,358.00	413.77	-5,109.89	14,651,733.49	1,788,138.41	40.34204914	-104.46986494
11,200.00	90.00	269.97	6,358.00	413.71	-5,209.89	14,651,732.81	1,788,038.41	40.34204894	-104.47022380
11,300.00	90.00	269.97	6,358.00	413.66	-5,309.89	14,651,732.14	1,787,938.41	40.34204873	-104.47058267
11,400.00	90.00	269.97	6,358.00	413.60	-5,409.89	14,651,731.47	1,787,838.42	40.34204852	-104.47094153
11,500.00	90.00	269.97	6,358.00	413.55	-5,509.89	14,651,730.79	1,787,738.42	40.34204831	-104.47130040
11,600.00	90.00	269.97	6,358.00	413.49	-5,609.89	14,651,730.12	1,787,638.42	40.34204810	-104.47165926
11,700.00	90.00	269.97	6,358.00	413.44	-5,709.89	14,651,729.44	1,787,538.42	40.34204788	-104.47201813
11,800.00	90.00	269.97	6,358.00	413.38	-5,809.89	14,651,728.77	1,787,438.43	40.34204767	-104.47237699
11,900.00	90.00	269.97	6,358.00	413.33	-5,909.89	14,651,728.09	1,787,338.43	40.34204746	-104.47273586
12,000.00	90.00	269.97	6,358.00	413.28	-6,009.89	14,651,727.42	1,787,238.43	40.34204724	-104.47309472
12,100.00	90.00	269.97	6,358.00	413.22	-6,109.89	14,651,726.75	1,787,138.43	40.34204702	-104.47345359
12,200.00	90.00	269.97	6,358.00	413.17	-6,209.89	14,651,726.07	1,787,038.44	40.34204680	-104.47381245
12,300.00	90.00	269.97	6,358.00	413.11	-6,309.89	14,651,725.40	1,786,938.44	40.34204659	-104.47417132
12,400.00	90.00	269.97	6,358.00	413.06	-6,409.89	14,651,724.72	1,786,838.44	40.34204636	-104.47453018
12,500.00	90.00	269.97	6,358.00	413.00	-6,509.89	14,651,724.05	1,786,738.44	40.34204614	-104.47488905
12,600.00	90.00	269.97	6,358.00	412.95	-6,609.89	14,651,723.37	1,786,638.45	40.34204592	-104.47524791
12,700.00	90.00	269.97	6,358.00	412.89	-6,709.89	14,651,722.70	1,786,538.45	40.34204570	-104.47560678
12,800.00	90.00	269.97	6,358.00	412.84	-6,809.89	14,651,722.03	1,786,438.45	40.34204547	-104.47596564
12,900.00	90.00	269.97	6,358.00	412.78	-6,909.89	14,651,721.35	1,786,338.45	40.34204525	-104.47632451
13,000.00	90.00	269.97	6,358.00	412.73	-7,009.89	14,651,720.68	1,786,238.46	40.34204502	-104.47668338
13,100.00	90.00	269.97	6,358.00	412.68	-7,109.89	14,651,720.00	1,786,138.46	40.34204479	-104.47704224
13,200.00	90.00	269.97	6,358.00	412.62	-7,209.89	14,651,719.33	1,786,038.46	40.34204456	-104.47740111
13,300.00	90.00	269.97	6,358.00	412.57	-7,309.89	14,651,718.66	1,785,938.46	40.34204433	-104.47775997
13,400.00	90.00	269.97	6,358.00	412.51	-7,409.89	14,651,717.98	1,785,838.47	40.34204410	-104.47811884
13,500.00	90.00	269.97	6,358.00	412.46	-7,509.89	14,651,717.31	1,785,738.47	40.34204387	-104.47847770
13,600.00	90.00	269.97	6,358.00	412.40	-7,609.89	14,651,716.63	1,785,638.47	40.34204363	-104.47883657
13,700.00	90.00	269.97	6,358.00	412.35	-7,709.89	14,651,715.96	1,785,538.47	40.34204340	-104.47919543
13,800.00	90.00	269.97	6,358.00	412.29	-7,809.89	14,651,715.28	1,785,438.48	40.34204316	-104.47955430
13,900.00	90.00	269.97	6,358.00	412.24	-7,909.89	14,651,714.61	1,785,338.48	40.34204292	-104.47991316
14,000.00	90.00	269.97	6,358.00	412.19	-8,009.89	14,651,713.94	1,785,238.48	40.34204269	-104.48027203
14,100.00	90.00	269.97	6,358.00	412.13	-8,109.88	14,651,713.26	1,785,138.48	40.34204245	-104.48063089
14,200.00	90.00	269.97	6,358.00	412.08	-8,209.88	14,651,712.59	1,785,038.49	40.34204221	-104.48098976
14,300.00	90.00	269.97	6,358.00	412.02	-8,309.88	14,651,711.91	1,784,938.49	40.34204196	-104.48134863
14,400.00	90.00	269.97	6,358.00	411.97	-8,409.88	14,651,711.24	1,784,838.49	40.34204172	-104.48170749
14,500.00	90.00	269.97	6,358.00	411.91	-8,509.88	14,651,710.56	1,784,738.49	40.34204148	-104.48206636
14,600.00	90.00	269.97	6,358.00	411.86	-8,609.88	14,651,709.89	1,784,638.50	40.34204123	-104.48242522
14,700.00	90.00	269.97	6,358.00	411.80	-8,709.88	14,651,709.22	1,784,538.50	40.34204099	-104.48278409
14,800.00	90.00	269.97	6,358.00	411.75	-8,809.88	14,651,708.54	1,784,438.50	40.34204074	-104.48314295
14,900.00	90.00	269.97	6,358.00	411.69	-8,909.88	14,651,707.87	1,784,338.50	40.34204049	-104.48350182
15,000.00	90.00	269.97	6,358.00	411.64	-9,009.88	14,651,707.19	1,784,238.51	40.34204024	-104.48386068
15,100.00	90.00	269.97	6,358.00	411.59	-9,109.88	14,651,706.52	1,784,138.51	40.34203999	-104.48421955
15,200.00	90.00	269.97	6,358.00	411.53	-9,209.88	14,651,705.85	1,784,038.51	40.34203974	-104.48457840
15,300.00	90.00	269.97	6,358.00	411.48	-9,309.88	14,651,705.17	1,783,938.51	40.34203949	-104.48493727
15,400.00	90.00	269.97	6,358.00	411.42	-9,409.88	14,651,704.50	1,783,838.52	40.34203923	-104.48529614
15,500.00	90.00	269.97	6,358.00	411.37	-9,509.88	14,651,703.82	1,783,738.52	40.34203898	-104.48565500

<b>Database:</b>	DB_Aug0116_LT_v14	<b>Local Co-ordinate Reference:</b>	Well Silverton 5-10-1L
<b>Company:</b>	Confluence Resources	<b>TVD Reference:</b>	RKB=4631+24 @ 4655.00ft
<b>Project:</b>	Weld County, Colorado	<b>MD Reference:</b>	RKB=4631+24 @ 4655.00ft
<b>Site:</b>	Section 04-T04N-R63W	<b>North Reference:</b>	True
<b>Well:</b>	Silverton 5-10-1L	<b>Survey Calculation Method:</b>	Minimum Curvature
<b>Wellbore:</b>	Original Hole		
<b>Design:</b>	plan1		

Planned Survey									
Measured Depth (ft)	Inclination (°)	Azimuth (°)	Vertical Depth (ft)	+N/-S (ft)	+E/-W (ft)	Map Northing (usft)	Map Easting (usft)	Latitude	Longitude
15,600.00	90.00	269.97	6,358.00	411.31	-9,609.88	14,651,703.15	1,783,638.52	40.34203872	-104.48601387
15,700.00	90.00	269.97	6,358.00	411.26	-9,709.88	14,651,702.47	1,783,538.52	40.34203846	-104.48637273
15,800.00	90.00	269.97	6,358.00	411.20	-9,809.88	14,651,701.80	1,783,438.53	40.34203820	-104.48673160
15,900.00	90.00	269.97	6,358.00	411.15	-9,909.88	14,651,701.13	1,783,338.53	40.34203795	-104.48709046
16,000.00	90.00	269.97	6,358.00	411.10	-10,009.88	14,651,700.45	1,783,238.53	40.34203768	-104.48744933
16,100.00	90.00	269.97	6,358.00	411.04	-10,109.88	14,651,699.78	1,783,138.53	40.34203742	-104.48780820
16,111.87	90.00	269.97	6,358.00	411.03	-10,121.76	14,651,699.70	1,783,126.66	40.34203739	-104.48785080
PBHL/TD 16111.87 MD 6358.00 TVD									

Design Targets									
Target Name - hit/miss target - Shape	Dip Angle (°)	Dip Dir. (°)	TVD (ft)	+N/-S (ft)	+E/-W (ft)	Northing (usft)	Easting (usft)	Latitude	Longitude
Silverton 5-10-1L SL 25¢ - plan hits target center - Point	0.00	0.00	24.00	0.00	0.00	14,651,351.40	1,793,250.75	40.34091442	-104.45152735
Silverton 5-10-1L LP 24¢ - plan hits target center - Point	0.00	0.00	6,358.00	416.16	-718.09	14,651,763.10	1,792,530.10	40.34205714	-104.45410431
Silverton 5-10-1L BHL 2¢ - plan hits target center - Point	0.00	0.00	6,358.00	411.03	-10,121.76	14,651,699.70	1,783,126.66	40.34203739	-104.48785080

Plan Annotations				
Measured Depth (ft)	Vertical Depth (ft)	Local Coordinates		Comment
		+N/-S (ft)	+E/-W (ft)	
2,000.00	2,000.00	0.00	0.00	KOP Begin 2°/100' build
2,304.58	2,304.01	15.01	-6.03	Begin 6.09° tangent section
5,830.84	5,810.36	362.23	-145.55	Begin 10°/100' build/turn
6,708.20	6,358.00	416.16	-718.09	LP Begin 90° lateral
16,111.87	6,358.00	411.03	-10,121.76	PBHL/TD 16111.87 MD 6358.00 TVD

<b>Database:</b>	DB_Aug0116_LT_v14	<b>Local Co-ordinate Reference:</b>	Well Silverton 5-10-1L
<b>Company:</b>	Confluence Resources	<b>TVD Reference:</b>	RKB=4631+24 @ 4655.00ft
<b>Project:</b>	Weld County, Colorado	<b>MD Reference:</b>	RKB=4631+24 @ 4655.00ft
<b>Site:</b>	Section 04-T04N-R63W	<b>North Reference:</b>	True
<b>Well:</b>	Silverton 5-10-1L	<b>Survey Calculation Method:</b>	Minimum Curvature
<b>Wellbore:</b>	Original Hole		
<b>Design:</b>	plan1		

<b>Project</b>	Weld County, Colorado		
<b>Map System:</b>	Universal Transverse Mercator (US Survey Feet)	<b>System Datum:</b>	Mean Sea Level
<b>Geo Datum:</b>	NAD83 Colorado - HARN		
<b>Map Zone:</b>	Zone 13N (108 W to 102 W)		

Site		Section 04-T04N-R63W			
Site Position:		Northing:	14,650,073.90 usft	Latitude:	40.33740565
From:	Map	Easting:	1,793,302.13 usft	Longitude:	-104.45137138
Position Uncertainty:	0.00 ft	Slot Radius:	13-3/16 "	Grid Convergence:	0.36 °

Well	Silverton 5-10-1L, Surf loc: 2598 FSL 255 FWL Section 04-T04N-R63W					
Well Position	+N/-S	1,277.80 ft	Northing:	14,651,351.40 usft	Latitude:	40.34091442
	+E/-W	-43.46 ft	Easting:	1,793,250.75 usft	Longitude:	-104.45152735
Position Uncertainty		0.00 ft	Wellhead Elevation:		Ground Level:	4,631.00 ft

<b>Wellbore</b>	Original Hole				
<b>Magnetics</b>	<b>Model Name</b>	<b>Sample Date</b>	<b>Declination (°)</b>	<b>Dip Angle (°)</b>	<b>Field Strength (nT)</b>
	HDGM	5/29/2018	8.08	66.90	52,227.80000000

<b>Design</b>	plan1			
<b>Audit Notes:</b>				
<b>Version:</b>	<b>Phase:</b>	PLAN	<b>Tie On Depth:</b>	0.00
<b>Vertical Section:</b>	<b>Depth From (TVD) (ft)</b>	<b>+N/-S (ft)</b>	<b>+E/-W (ft)</b>	<b>Direction (°)</b>
	0.00	0.00	0.00	272.33

<b>Plan Survey Tool Program</b>	<b>Date</b>	5/29/2018		
<b>Depth From (ft)</b>	<b>Depth To (ft)</b>	<b>Survey (Wellbore)</b>	<b>Tool Name</b>	<b>Remarks</b>
1	0.00	16,111.87	plan1 (Original Hole)	

<b>Plan Sections</b>										
<b>Measured Depth (ft)</b>	<b>Inclination (°)</b>	<b>Azimuth (°)</b>	<b>Vertical Depth (ft)</b>	<b>+N/-S (ft)</b>	<b>+E/-W (ft)</b>	<b>Dogleg Rate (°/100ft)</b>	<b>Build Rate (°/100ft)</b>	<b>Turn Rate (°/100ft)</b>	<b>TFO (°)</b>	<b>Target</b>
0.00	0.00	0.00	0.00	0.00	0.00	0.00	0.00	0.00	0.00	
2,000.00	0.00	0.00	2,000.00	0.00	0.00	0.00	0.00	0.00	0.00	
2,304.58	6.09	338.11	2,304.01	15.01	-6.03	2.00	2.00	0.00	338.11	
5,830.84	6.09	338.11	5,810.36	362.23	-145.55	0.00	0.00	0.00	0.00	
6,708.20	90.00	269.97	6,358.00	416.16	-718.09	10.00	9.56	-7.77	-68.25	Silverton 5-10-1L LP 2
16,111.87	90.00	269.97	6,358.00	411.03	-10,121.76	0.00	0.00	0.00	0.00	Silverton 5-10-1L BHL



<b>Database:</b>	DB_Aug0116_LT_v14	<b>Local Co-ordinate Reference:</b>	Well Silverton 5-10-1L
<b>Company:</b>	Confluence Resources	<b>TVD Reference:</b>	RKB=4631+24 @ 4655.00ft
<b>Project:</b>	Weld County, Colorado	<b>MD Reference:</b>	RKB=4631+24 @ 4655.00ft
<b>Site:</b>	Section 04-T04N-R63W	<b>North Reference:</b>	True
<b>Well:</b>	Silverton 5-10-1L	<b>Survey Calculation Method:</b>	Minimum Curvature
<b>Wellbore:</b>	Original Hole		
<b>Design:</b>	plan1		

Planned Survey									
Measured Depth (ft)	Inclination (°)	Azimuth (°)	Vertical Depth (ft)	+N/-S (ft)	+E/-W (ft)	Vertical Section (ft)	Dogleg Rate (°/100ft)	Build Rate (°/100ft)	Turn Rate (°/100ft)
0.00	0.00	0.00	0.00	0.00	0.00	0.00	0.00	0.00	0.00
100.00	0.00	0.00	100.00	0.00	0.00	0.00	0.00	0.00	0.00
200.00	0.00	0.00	200.00	0.00	0.00	0.00	0.00	0.00	0.00
300.00	0.00	0.00	300.00	0.00	0.00	0.00	0.00	0.00	0.00
400.00	0.00	0.00	400.00	0.00	0.00	0.00	0.00	0.00	0.00
500.00	0.00	0.00	500.00	0.00	0.00	0.00	0.00	0.00	0.00
600.00	0.00	0.00	600.00	0.00	0.00	0.00	0.00	0.00	0.00
700.00	0.00	0.00	700.00	0.00	0.00	0.00	0.00	0.00	0.00
800.00	0.00	0.00	800.00	0.00	0.00	0.00	0.00	0.00	0.00
900.00	0.00	0.00	900.00	0.00	0.00	0.00	0.00	0.00	0.00
1,000.00	0.00	0.00	1,000.00	0.00	0.00	0.00	0.00	0.00	0.00
1,100.00	0.00	0.00	1,100.00	0.00	0.00	0.00	0.00	0.00	0.00
1,200.00	0.00	0.00	1,200.00	0.00	0.00	0.00	0.00	0.00	0.00
1,300.00	0.00	0.00	1,300.00	0.00	0.00	0.00	0.00	0.00	0.00
1,400.00	0.00	0.00	1,400.00	0.00	0.00	0.00	0.00	0.00	0.00
1,500.00	0.00	0.00	1,500.00	0.00	0.00	0.00	0.00	0.00	0.00
1,600.00	0.00	0.00	1,600.00	0.00	0.00	0.00	0.00	0.00	0.00
1,700.00	0.00	0.00	1,700.00	0.00	0.00	0.00	0.00	0.00	0.00
1,800.00	0.00	0.00	1,800.00	0.00	0.00	0.00	0.00	0.00	0.00
1,900.00	0.00	0.00	1,900.00	0.00	0.00	0.00	0.00	0.00	0.00
2,000.00	0.00	0.00	2,000.00	0.00	0.00	0.00	0.00	0.00	0.00
<b>KOP Begin 2°/100' build</b>									
2,100.00	2.00	338.11	2,099.98	1.62	-0.65	0.72	2.00	2.00	0.00
2,200.00	4.00	338.11	2,199.84	6.48	-2.60	2.86	2.00	2.00	0.00
2,300.00	6.00	338.11	2,299.45	14.56	-5.85	6.44	2.00	2.00	0.00
2,304.58	6.09	338.11	2,304.01	15.01	-6.03	6.64	2.00	2.00	0.00
<b>Begin 6.09° tangent section</b>									
2,400.00	6.09	338.11	2,398.89	24.41	-9.81	10.79	0.00	0.00	0.00
2,500.00	6.09	338.11	2,498.32	34.25	-13.76	15.14	0.00	0.00	0.00
2,600.00	6.09	338.11	2,597.76	44.10	-17.72	19.49	0.00	0.00	0.00
2,700.00	6.09	338.11	2,697.19	53.95	-21.68	23.85	0.00	0.00	0.00
2,800.00	6.09	338.11	2,796.63	63.79	-25.63	28.20	0.00	0.00	0.00
2,900.00	6.09	338.11	2,896.06	73.64	-29.59	32.55	0.00	0.00	0.00
3,000.00	6.09	338.11	2,995.50	83.49	-33.55	36.90	0.00	0.00	0.00
3,100.00	6.09	338.11	3,094.94	93.33	-37.50	41.26	0.00	0.00	0.00
3,200.00	6.09	338.11	3,194.37	103.18	-41.46	45.61	0.00	0.00	0.00
3,300.00	6.09	338.11	3,293.81	113.03	-45.41	49.96	0.00	0.00	0.00
3,400.00	6.09	338.11	3,393.24	122.87	-49.37	54.32	0.00	0.00	0.00
3,500.00	6.09	338.11	3,492.68	132.72	-53.33	58.67	0.00	0.00	0.00
3,600.00	6.09	338.11	3,592.11	142.57	-57.28	63.02	0.00	0.00	0.00
3,700.00	6.09	338.11	3,691.55	152.41	-61.24	67.37	0.00	0.00	0.00
3,800.00	6.09	338.11	3,790.98	162.26	-65.20	71.73	0.00	0.00	0.00
3,900.00	6.09	338.11	3,890.42	172.11	-69.15	76.08	0.00	0.00	0.00
4,000.00	6.09	338.11	3,989.85	181.95	-73.11	80.43	0.00	0.00	0.00
4,100.00	6.09	338.11	4,089.29	191.80	-77.07	84.79	0.00	0.00	0.00
4,200.00	6.09	338.11	4,188.72	201.65	-81.02	89.14	0.00	0.00	0.00
4,300.00	6.09	338.11	4,288.16	211.49	-84.98	93.49	0.00	0.00	0.00
4,400.00	6.09	338.11	4,387.59	221.34	-88.94	97.84	0.00	0.00	0.00
4,500.00	6.09	338.11	4,487.03	231.19	-92.89	102.20	0.00	0.00	0.00
4,600.00	6.09	338.11	4,586.47	241.03	-96.85	106.55	0.00	0.00	0.00
4,700.00	6.09	338.11	4,685.90	250.88	-100.80	110.90	0.00	0.00	0.00
4,800.00	6.09	338.11	4,785.34	260.72	-104.76	115.25	0.00	0.00	0.00
4,900.00	6.09	338.11	4,884.77	270.57	-108.72	119.61	0.00	0.00	0.00



<b>Database:</b>	DB_Aug0116_LT_v14	<b>Local Co-ordinate Reference:</b>	Well Silverton 5-10-1L
<b>Company:</b>	Confluence Resources	<b>TVD Reference:</b>	RKB=4631+24 @ 4655.00ft
<b>Project:</b>	Weld County, Colorado	<b>MD Reference:</b>	RKB=4631+24 @ 4655.00ft
<b>Site:</b>	Section 04-T04N-R63W	<b>North Reference:</b>	True
<b>Well:</b>	Silverton 5-10-1L	<b>Survey Calculation Method:</b>	Minimum Curvature
<b>Wellbore:</b>	Original Hole		
<b>Design:</b>	plan1		

Planned Survey									
Measured Depth (ft)	Inclination (°)	Azimuth (°)	Vertical Depth (ft)	+N/-S (ft)	+E/-W (ft)	Vertical Section (ft)	Dogleg Rate (°/100ft)	Build Rate (°/100ft)	Turn Rate (°/100ft)
5,000.00	6.09	338.11	4,984.21	280.42	-112.67	123.96	0.00	0.00	0.00
5,100.00	6.09	338.11	5,083.64	290.26	-116.63	128.31	0.00	0.00	0.00
5,200.00	6.09	338.11	5,183.08	300.11	-120.59	132.67	0.00	0.00	0.00
5,300.00	6.09	338.11	5,282.51	309.96	-124.54	137.02	0.00	0.00	0.00
5,400.00	6.09	338.11	5,381.95	319.80	-128.50	141.37	0.00	0.00	0.00
5,500.00	6.09	338.11	5,481.38	329.65	-132.46	145.72	0.00	0.00	0.00
5,600.00	6.09	338.11	5,580.82	339.50	-136.41	150.08	0.00	0.00	0.00
5,700.00	6.09	338.11	5,680.25	349.34	-140.37	154.43	0.00	0.00	0.00
5,800.00	6.09	338.11	5,779.69	359.19	-144.33	158.78	0.00	0.00	0.00
5,830.84	6.09	338.11	5,810.36	362.23	-145.55	160.12	0.00	0.00	0.00
Begin 10°/100' build/turn									
5,900.00	10.77	301.35	5,878.79	369.00	-152.44	167.29	10.00	6.77	-53.16
6,000.00	19.97	285.79	5,975.15	378.53	-176.91	192.13	10.00	9.20	-15.56
6,100.00	29.68	279.98	6,065.82	387.49	-217.83	233.37	10.00	9.71	-5.81
6,200.00	39.52	276.86	6,148.04	395.61	-273.94	289.76	10.00	9.85	-3.11
6,300.00	49.42	274.84	6,219.32	402.63	-343.54	359.60	10.00	9.90	-2.03
6,400.00	59.35	273.33	6,277.48	408.34	-424.53	440.75	10.00	9.93	-1.50
6,500.00	69.29	272.12	6,320.77	412.58	-514.44	530.75	10.00	9.94	-1.22
6,600.00	79.23	271.05	6,347.86	415.21	-610.53	626.87	10.00	9.95	-1.07
6,700.00	89.18	270.05	6,357.94	416.16	-709.89	726.19	10.00	9.95	-1.00
6,708.20	90.00	269.97	6,358.00	416.16	-718.09	734.38	10.00	9.95	-0.99
LP Begin 90° lateral									
6,800.00	90.00	269.97	6,358.00	416.11	-809.89	826.10	0.00	0.00	0.00
6,900.00	90.00	269.97	6,358.00	416.05	-909.89	926.02	0.00	0.00	0.00
7,000.00	90.00	269.97	6,358.00	416.00	-1,009.89	1,025.93	0.00	0.00	0.00
7,100.00	90.00	269.97	6,358.00	415.95	-1,109.89	1,125.85	0.00	0.00	0.00
7,200.00	90.00	269.97	6,358.00	415.89	-1,209.89	1,225.76	0.00	0.00	0.00
7,300.00	90.00	269.97	6,358.00	415.84	-1,309.89	1,325.68	0.00	0.00	0.00
7,400.00	90.00	269.97	6,358.00	415.78	-1,409.89	1,425.60	0.00	0.00	0.00
7,500.00	90.00	269.97	6,358.00	415.73	-1,509.89	1,525.51	0.00	0.00	0.00
7,600.00	90.00	269.97	6,358.00	415.67	-1,609.89	1,625.43	0.00	0.00	0.00
7,700.00	90.00	269.97	6,358.00	415.62	-1,709.89	1,725.34	0.00	0.00	0.00
7,800.00	90.00	269.97	6,358.00	415.56	-1,809.89	1,825.26	0.00	0.00	0.00
7,900.00	90.00	269.97	6,358.00	415.51	-1,909.89	1,925.17	0.00	0.00	0.00
8,000.00	90.00	269.97	6,358.00	415.45	-2,009.89	2,025.09	0.00	0.00	0.00
8,100.00	90.00	269.97	6,358.00	415.40	-2,109.89	2,125.00	0.00	0.00	0.00
8,200.00	90.00	269.97	6,358.00	415.35	-2,209.89	2,224.92	0.00	0.00	0.00
8,300.00	90.00	269.97	6,358.00	415.29	-2,309.89	2,324.83	0.00	0.00	0.00
8,400.00	90.00	269.97	6,358.00	415.24	-2,409.89	2,424.75	0.00	0.00	0.00
8,500.00	90.00	269.97	6,358.00	415.18	-2,509.89	2,524.67	0.00	0.00	0.00
8,600.00	90.00	269.97	6,358.00	415.13	-2,609.89	2,624.58	0.00	0.00	0.00
8,700.00	90.00	269.97	6,358.00	415.07	-2,709.89	2,724.50	0.00	0.00	0.00
8,800.00	90.00	269.97	6,358.00	415.02	-2,809.89	2,824.41	0.00	0.00	0.00
8,900.00	90.00	269.97	6,358.00	414.96	-2,909.89	2,924.33	0.00	0.00	0.00
9,000.00	90.00	269.97	6,358.00	414.91	-3,009.89	3,024.24	0.00	0.00	0.00
9,100.00	90.00	269.97	6,358.00	414.86	-3,109.89	3,124.16	0.00	0.00	0.00
9,200.00	90.00	269.97	6,358.00	414.80	-3,209.89	3,224.07	0.00	0.00	0.00
9,300.00	90.00	269.97	6,358.00	414.75	-3,309.89	3,323.99	0.00	0.00	0.00
9,400.00	90.00	269.97	6,358.00	414.69	-3,409.89	3,423.90	0.00	0.00	0.00
9,500.00	90.00	269.97	6,358.00	414.64	-3,509.89	3,523.82	0.00	0.00	0.00
9,600.00	90.00	269.97	6,358.00	414.58	-3,609.89	3,623.73	0.00	0.00	0.00
9,700.00	90.00	269.97	6,358.00	414.53	-3,709.89	3,723.65	0.00	0.00	0.00
9,800.00	90.00	269.97	6,358.00	414.47	-3,809.89	3,823.57	0.00	0.00	0.00
9,900.00	90.00	269.97	6,358.00	414.42	-3,909.89	3,923.48	0.00	0.00	0.00

<b>Database:</b>	DB_Aug0116_LT_v14	<b>Local Co-ordinate Reference:</b>	Well Silverton 5-10-1L
<b>Company:</b>	Confluence Resources	<b>TVD Reference:</b>	RKB=4631+24 @ 4655.00ft
<b>Project:</b>	Weld County, Colorado	<b>MD Reference:</b>	RKB=4631+24 @ 4655.00ft
<b>Site:</b>	Section 04-T04N-R63W	<b>North Reference:</b>	True
<b>Well:</b>	Silverton 5-10-1L	<b>Survey Calculation Method:</b>	Minimum Curvature
<b>Wellbore:</b>	Original Hole		
<b>Design:</b>	plan1		

Planned Survey									
Measured Depth (ft)	Inclination (°)	Azimuth (°)	Vertical Depth (ft)	+N/-S (ft)	+E/-W (ft)	Vertical Section (ft)	Dogleg Rate (°/100ft)	Build Rate (°/100ft)	Turn Rate (°/100ft)
10,000.00	90.00	269.97	6,358.00	414.37	-4,009.89	4,023.40	0.00	0.00	0.00
10,100.00	90.00	269.97	6,358.00	414.31	-4,109.89	4,123.31	0.00	0.00	0.00
10,200.00	90.00	269.97	6,358.00	414.26	-4,209.89	4,223.23	0.00	0.00	0.00
10,300.00	90.00	269.97	6,358.00	414.20	-4,309.89	4,323.14	0.00	0.00	0.00
10,400.00	90.00	269.97	6,358.00	414.15	-4,409.89	4,423.06	0.00	0.00	0.00
10,500.00	90.00	269.97	6,358.00	414.09	-4,509.89	4,522.97	0.00	0.00	0.00
10,600.00	90.00	269.97	6,358.00	414.04	-4,609.89	4,622.89	0.00	0.00	0.00
10,700.00	90.00	269.97	6,358.00	413.98	-4,709.89	4,722.80	0.00	0.00	0.00
10,800.00	90.00	269.97	6,358.00	413.93	-4,809.89	4,822.72	0.00	0.00	0.00
10,900.00	90.00	269.97	6,358.00	413.87	-4,909.89	4,922.64	0.00	0.00	0.00
11,000.00	90.00	269.97	6,358.00	413.82	-5,009.89	5,022.55	0.00	0.00	0.00
11,100.00	90.00	269.97	6,358.00	413.77	-5,109.89	5,122.47	0.00	0.00	0.00
11,200.00	90.00	269.97	6,358.00	413.71	-5,209.89	5,222.38	0.00	0.00	0.00
11,300.00	90.00	269.97	6,358.00	413.66	-5,309.89	5,322.30	0.00	0.00	0.00
11,400.00	90.00	269.97	6,358.00	413.60	-5,409.89	5,422.21	0.00	0.00	0.00
11,500.00	90.00	269.97	6,358.00	413.55	-5,509.89	5,522.13	0.00	0.00	0.00
11,600.00	90.00	269.97	6,358.00	413.49	-5,609.89	5,622.04	0.00	0.00	0.00
11,700.00	90.00	269.97	6,358.00	413.44	-5,709.89	5,721.96	0.00	0.00	0.00
11,800.00	90.00	269.97	6,358.00	413.38	-5,809.89	5,821.87	0.00	0.00	0.00
11,900.00	90.00	269.97	6,358.00	413.33	-5,909.89	5,921.79	0.00	0.00	0.00
12,000.00	90.00	269.97	6,358.00	413.28	-6,009.89	6,021.70	0.00	0.00	0.00
12,100.00	90.00	269.97	6,358.00	413.22	-6,109.89	6,121.62	0.00	0.00	0.00
12,200.00	90.00	269.97	6,358.00	413.17	-6,209.89	6,221.54	0.00	0.00	0.00
12,300.00	90.00	269.97	6,358.00	413.11	-6,309.89	6,321.45	0.00	0.00	0.00
12,400.00	90.00	269.97	6,358.00	413.06	-6,409.89	6,421.37	0.00	0.00	0.00
12,500.00	90.00	269.97	6,358.00	413.00	-6,509.89	6,521.28	0.00	0.00	0.00
12,600.00	90.00	269.97	6,358.00	412.95	-6,609.89	6,621.20	0.00	0.00	0.00
12,700.00	90.00	269.97	6,358.00	412.89	-6,709.89	6,721.11	0.00	0.00	0.00
12,800.00	90.00	269.97	6,358.00	412.84	-6,809.89	6,821.03	0.00	0.00	0.00
12,900.00	90.00	269.97	6,358.00	412.78	-6,909.89	6,920.94	0.00	0.00	0.00
13,000.00	90.00	269.97	6,358.00	412.73	-7,009.89	7,020.86	0.00	0.00	0.00
13,100.00	90.00	269.97	6,358.00	412.68	-7,109.89	7,120.77	0.00	0.00	0.00
13,200.00	90.00	269.97	6,358.00	412.62	-7,209.89	7,220.69	0.00	0.00	0.00
13,300.00	90.00	269.97	6,358.00	412.57	-7,309.89	7,320.61	0.00	0.00	0.00
13,400.00	90.00	269.97	6,358.00	412.51	-7,409.89	7,420.52	0.00	0.00	0.00
13,500.00	90.00	269.97	6,358.00	412.46	-7,509.89	7,520.44	0.00	0.00	0.00
13,600.00	90.00	269.97	6,358.00	412.40	-7,609.89	7,620.35	0.00	0.00	0.00
13,700.00	90.00	269.97	6,358.00	412.35	-7,709.89	7,720.27	0.00	0.00	0.00
13,800.00	90.00	269.97	6,358.00	412.29	-7,809.89	7,820.18	0.00	0.00	0.00
13,900.00	90.00	269.97	6,358.00	412.24	-7,909.89	7,920.10	0.00	0.00	0.00
14,000.00	90.00	269.97	6,358.00	412.19	-8,009.89	8,020.01	0.00	0.00	0.00
14,100.00	90.00	269.97	6,358.00	412.13	-8,109.88	8,119.93	0.00	0.00	0.00
14,200.00	90.00	269.97	6,358.00	412.08	-8,209.88	8,219.84	0.00	0.00	0.00
14,300.00	90.00	269.97	6,358.00	412.02	-8,309.88	8,319.76	0.00	0.00	0.00
14,400.00	90.00	269.97	6,358.00	411.97	-8,409.88	8,419.67	0.00	0.00	0.00
14,500.00	90.00	269.97	6,358.00	411.91	-8,509.88	8,519.59	0.00	0.00	0.00
14,600.00	90.00	269.97	6,358.00	411.86	-8,609.88	8,619.51	0.00	0.00	0.00
14,700.00	90.00	269.97	6,358.00	411.80	-8,709.88	8,719.42	0.00	0.00	0.00
14,800.00	90.00	269.97	6,358.00	411.75	-8,809.88	8,819.34	0.00	0.00	0.00
14,900.00	90.00	269.97	6,358.00	411.69	-8,909.88	8,919.25	0.00	0.00	0.00
15,000.00	90.00	269.97	6,358.00	411.64	-9,009.88	9,019.17	0.00	0.00	0.00
15,100.00	90.00	269.97	6,358.00	411.59	-9,109.88	9,119.08	0.00	0.00	0.00
15,200.00	90.00	269.97	6,358.00	411.53	-9,209.88	9,219.00	0.00	0.00	0.00
15,300.00	90.00	269.97	6,358.00	411.48	-9,309.88	9,318.91	0.00	0.00	0.00

<b>Database:</b>	DB_Aug0116_LT_v14	<b>Local Co-ordinate Reference:</b>	Well Silverton 5-10-1L
<b>Company:</b>	Confluence Resources	<b>TVD Reference:</b>	RKB=4631+24 @ 4655.00ft
<b>Project:</b>	Weld County, Colorado	<b>MD Reference:</b>	RKB=4631+24 @ 4655.00ft
<b>Site:</b>	Section 04-T04N-R63W	<b>North Reference:</b>	True
<b>Well:</b>	Silverton 5-10-1L	<b>Survey Calculation Method:</b>	Minimum Curvature
<b>Wellbore:</b>	Original Hole		
<b>Design:</b>	plan1		

Planned Survey									
Measured Depth (ft)	Inclination (°)	Azimuth (°)	Vertical Depth (ft)	+N/-S (ft)	+E/-W (ft)	Vertical Section (ft)	Dogleg Rate (°/100ft)	Build Rate (°/100ft)	Turn Rate (°/100ft)
15,400.00	90.00	269.97	6,358.00	411.42	-9,409.88	9,418.83	0.00	0.00	0.00
15,500.00	90.00	269.97	6,358.00	411.37	-9,509.88	9,518.74	0.00	0.00	0.00
15,600.00	90.00	269.97	6,358.00	411.31	-9,609.88	9,618.66	0.00	0.00	0.00
15,700.00	90.00	269.97	6,358.00	411.26	-9,709.88	9,718.58	0.00	0.00	0.00
15,800.00	90.00	269.97	6,358.00	411.20	-9,809.88	9,818.49	0.00	0.00	0.00
15,900.00	90.00	269.97	6,358.00	411.15	-9,909.88	9,918.41	0.00	0.00	0.00
16,000.00	90.00	269.97	6,358.00	411.10	-10,009.88	10,018.32	0.00	0.00	0.00
16,100.00	90.00	269.97	6,358.00	411.04	-10,109.88	10,118.24	0.00	0.00	0.00
16,111.87	90.00	269.97	6,358.00	411.03	-10,121.76	10,130.10	0.00	0.00	0.00
PBHL/TD 16111.87 MD 6358.00 TVD									

Design Targets									
Target Name - hit/miss target - Shape	Dip Angle (°)	Dip Dir. (°)	TVD (ft)	+N/-S (ft)	+E/-W (ft)	Northing (usft)	Easting (usft)	Latitude	Longitude
Silverton 5-10-1L SL 25¢ - plan hits target center - Point	0.00	0.00	24.00	0.00	0.00	14,651,351.40	1,793,250.75	40.34091442	-104.45152735
Silverton 5-10-1L LP 24¢ - plan hits target center - Point	0.00	0.00	6,358.00	416.16	-718.09	14,651,763.10	1,792,530.10	40.34205714	-104.45410431
Silverton 5-10-1L BHL 2¢ - plan hits target center - Point	0.00	0.00	6,358.00	411.03	-10,121.76	14,651,699.70	1,783,126.66	40.34203739	-104.48785080

Plan Annotations				
Measured Depth (ft)	Vertical Depth (ft)	Local Coordinates		Comment
		+N/-S (ft)	+E/-W (ft)	
2,000.00	2,000.00	0.00	0.00	KOP Begin 2°/100' build
2,304.58	2,304.01	15.01	-6.03	Begin 6.09° tangent section
5,830.84	5,810.36	362.23	-145.55	Begin 10°/100' build/turn
6,708.20	6,358.00	416.16	-718.09	LP Begin 90° lateral
16,111.87	6,358.00	411.03	-10,121.76	PBHL/TD 16111.87 MD 6358.00 TVD