

# NOBLE ENERGY, INC

Location: COLORADO Slot: SLOT#06 HULLABALOO Y21-756(445'FNL&2617'FWL,SEC.16)  
Field: WELD COUNTY (NOBLE NAD 83 GRID) Well: HULLABALOO Y21-756  
Facility: SEC.16-T02N-R64W Wellbore: HULLABALOO Y21-756 PWB

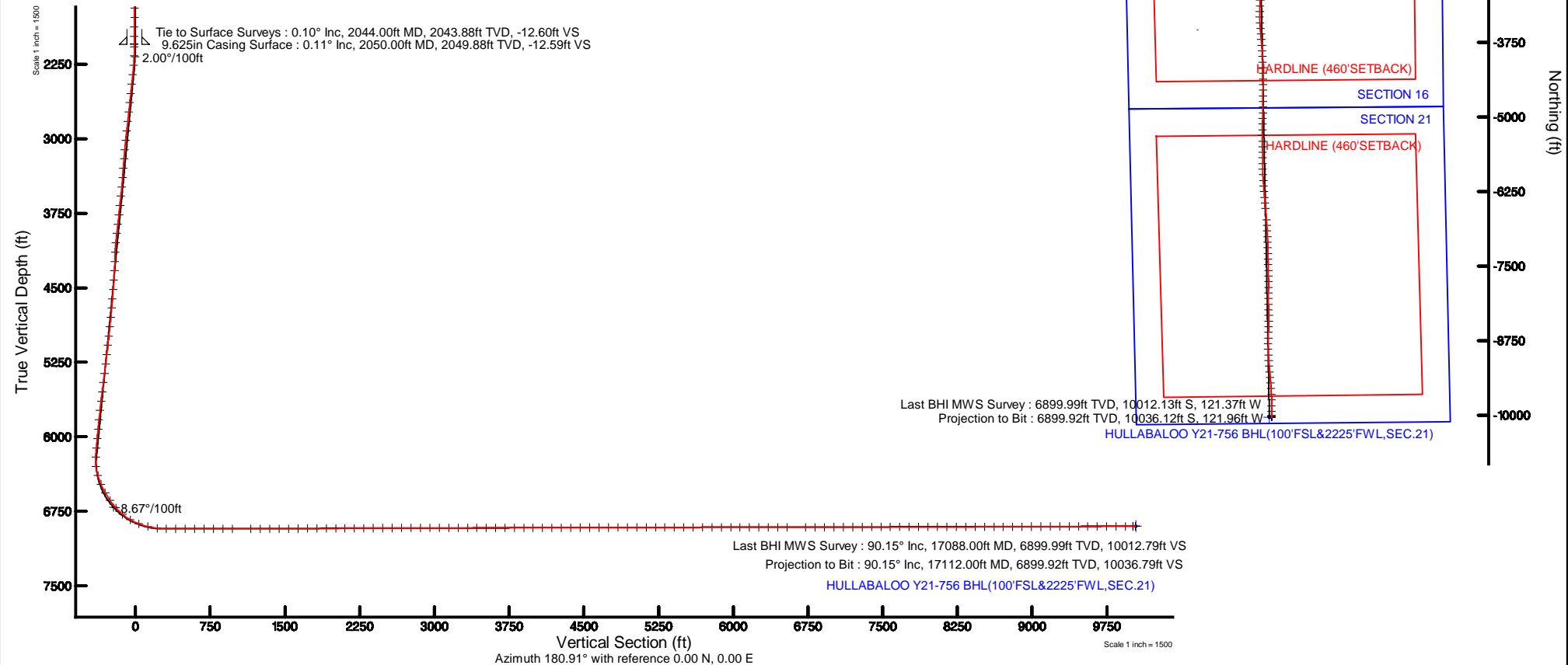
Plot reference wellpath is HULLABALOO Y21-756 (REV-A.0) PWP	Grid System: NAD83 / Lambert Colorado SP, Northern Zone (501), US feet
True vertical depths are referenced to RIG (30KB) (RKB)	* = Wellpath was transformed from a different geodetic datum
Measured depths are referenced to RIG (30KB) (RKB)	North Reference: Grid north
RIG (30KB) (RKB) to Mean Sea Level: 4942 feet	Scale: True distance
Mean Sea Level to Ground level (At Slot: SLOT#06 HULLABALOO Y21-756(445'FNL&2617'FWL,SEC.16)): 0 feet	Depths are in feet
Coordinates are in feet referenced to Slot	Created by: guenaler on 2017-11-07
	Database: WA_DEN_Denver_Defn

## Comments

SURFACE LOCATION: NENW  
40.14454 N  
104.55665 W  
API: 05-123-45240

## Location Information

Facility Name			Grid East (US ft)	Grid North (US ft)	Latitude	Longitude
SEC.16-T02N-R64W			3261942.561	1296894.275	40°08'40.452"N	104°33'46.800"W
Slot	Local N (ft)	Local E (ft)	Grid East (US ft)	Grid North (US ft)	Latitude	Longitude
SLOT#06 HULLABALOO Y21-756(445'FNL&2617'FWL,SEC.16)	7.89	1775.30	3263717.781	1296902.169	40°08'40.344"N	104°33'23.940"W
RIG (30KB) (RKB) to Ground level (At Slot: SLOT#06 HULLABALOO Y21-756(445'FNL&2617'FWL,SEC.16))					4942ft	
Mean Sea Level to Ground level (At Slot: SLOT#06 HULLABALOO Y21-756(445'FNL&2617'FWL,SEC.16))					0ft	
RIG (30KB) (RKB) to Mean Sea Level					4942ft	





Actual Wellpath Report

HULLABALOO Y-21-756 AWP

Page 1 of 10



REFERENCE WELLPATH IDENTIFICATION			
Operator	NOBLE ENERGY, INC	Slot	SLOT#06 HULLABALOO Y21-756(445'FNL&2617'FWL,SEC.16)
Area	COLORADO	Well	HULLABALOO Y21-756
Field	WELD COUNTY (NOBLE NAD 83 GRID)	Wellbore	HULLABALOO Y-21-756 AWB
Facility	SEC.16-T02N-R64W		

REPORT SETUP INFORMATION			
Projection System	NAD83 / Lambert Colorado SP, Northern Zone (501), US feet	Software System	WellArchitect® 5.0
North Reference	Grid	User	Guenaler
Scale	0.999959	Report Generated	11/7/2017 at 1:20:47 PM
Convergence at slot	0.61° East	Database/Source file	WA_DEN_Denver_Defn/HULLABALOO_Y-21-756_AWP.xml

WELLPATH LOCATION						
	Local coordinates		Grid coordinates		Geographic coordinates	
	North[ft]	East[ft]	Easting[US ft]	Northing[US ft]	Latitude	Longitude
Slot Location	7.89	1775.30	3263717.78	1296902.17	40°08'40.344"N	104°33'23.940"W
Facility Reference Pt			3261942.56	1296894.28	40°08'40.452"N	104°33'46.800"W
Field Reference Pt			3000000.00	4454105.15	48°46'34.315"N	105°30'00.000"W

WELLPATH DATUM			
Calculation method	Minimum curvature	RIG (30'KB) (RKB) to Facility Vertical Datum	4942.00ft
Horizontal Reference Pt	Slot	RIG (30'KB) (RKB) to Mean Sea Level	4942.00ft
Vertical Reference Pt	RIG (30'KB) (RKB)	RIG (30'KB) (RKB) to Ground Level at Slot (SLOT#06 HULLABALOO Y21-756 (445'FNL&2617'FWL,SEC.16))	4942.00ft
MD Reference Pt	RIG (30'KB) (RKB)	Section Origin	N 0.00, E 0.00 ft
Field Vertical Reference	Mean Sea Level	Section Azimuth	180.91°



Actual Wellpath Report

HULLABALOO Y-21-756 AWP

Page 2 of 10



REFERENCE WELLPATH IDENTIFICATION			
Operator	NOBLE ENERGY, INC	Slot	SLOT#06 HULLABALOO Y21-756(445'FNL&2617'FWL,SEC.16)
Area	COLORADO	Well	HULLABALOO Y21-756
Field	WELD COUNTY (NOBLE NAD 83 GRID)	Wellbore	HULLABALOO Y-21-756 AWB
Facility	SEC.16-T02N-R64W		

WELLPATH DATA (182 stations)										
MD [ft]	Inclination [°]	Azimuth [°]	TVD [ft]	Vert Sect [ft]	North [ft]	East [ft]	Latitude	Longitude	DLS [°/100ft]	Comments
0.00	0.000	108.610	0.00	0.00	0.00	0.00	40°08'40.344"N	104°33'23.940"W	0.00	
81.00	0.870	108.610	81.00	0.19	-0.20	0.58	40°08'40.342"N	104°33'23.933"W	1.07	
176.00	0.580	126.760	175.99	0.69	-0.71	1.65	40°08'40.337"N	104°33'23.919"W	0.39	
267.00	1.060	67.940	266.98	0.63	-0.67	2.80	40°08'40.337"N	104°33'23.904"W	1.00	
361.00	0.770	34.950	360.97	-0.23	0.17	3.97	40°08'40.345"N	104°33'23.889"W	0.63	
456.00	0.740	34.880	455.96	-1.27	1.20	4.68	40°08'40.355"N	104°33'23.880"W	0.03	
550.00	0.610	327.410	549.96	-2.19	2.12	4.76	40°08'40.364"N	104°33'23.878"W	0.81	
645.00	0.210	37.170	644.95	-2.75	2.68	4.60	40°08'40.370"N	104°33'23.880"W	0.60	
739.00	0.810	73.920	738.95	-3.09	3.00	5.34	40°08'40.373"N	104°33'23.871"W	0.70	
834.00	0.480	44.910	833.94	-3.57	3.47	6.26	40°08'40.378"N	104°33'23.859"W	0.48	
929.00	0.190	351.730	928.94	-4.01	3.91	6.52	40°08'40.382"N	104°33'23.855"W	0.42	
1023.00	0.320	271.830	1022.94	-4.17	4.07	6.24	40°08'40.384"N	104°33'23.859"W	0.36	
1118.00	0.090	138.980	1117.94	-4.12	4.02	6.02	40°08'40.383"N	104°33'23.862"W	0.41	
1213.00	0.220	24.670	1212.94	-4.23	4.13	6.15	40°08'40.384"N	104°33'23.860"W	0.28	
1307.00	0.120	56.920	1306.94	-4.45	4.35	6.30	40°08'40.386"N	104°33'23.858"W	0.14	
1402.00	0.380	332.730	1401.94	-4.78	4.68	6.24	40°08'40.390"N	104°33'23.859"W	0.41	
1496.00	0.810	354.520	1495.93	-5.72	5.62	6.04	40°08'40.399"N	104°33'23.861"W	0.51	
1591.00	1.370	340.490	1590.92	-7.45	7.36	5.59	40°08'40.416"N	104°33'23.867"W	0.65	
1685.00	0.800	340.680	1684.90	-9.12	9.04	5.00	40°08'40.433"N	104°33'23.874"W	0.61	
1780.00	0.720	342.350	1779.89	-10.31	10.24	4.60	40°08'40.445"N	104°33'23.879"W	0.09	
1875.00	0.610	357.680	1874.89	-11.38	11.31	4.40	40°08'40.455"N	104°33'23.882"W	0.22	
1969.00	0.510	22.720	1968.88	-12.27	12.19	4.54	40°08'40.464"N	104°33'23.880"W	0.28	
2044.00	0.100	72.830	2043.88	-12.60	12.52	4.73	40°08'40.467"N	104°33'23.877"W	0.60	Tie to Surface Surveys
2075.00	0.500	176.850	2074.88	-12.47	12.40	4.77	40°08'40.466"N	104°33'23.877"W	1.72	
2169.00	1.330	347.110	2168.87	-13.12	13.05	4.54	40°08'40.472"N	104°33'23.880"W	1.94	
2264.00	4.540	333.270	2263.74	-17.52	17.48	2.61	40°08'40.516"N	104°33'23.904"W	3.44	
2359.00	7.170	336.740	2358.23	-26.26	26.29	-1.43	40°08'40.604"N	104°33'23.955"W	2.79	
2453.00	7.360	333.040	2451.48	-36.94	37.05	-6.47	40°08'40.711"N	104°33'24.018"W	0.54	
2548.00	7.020	321.910	2545.74	-46.83	47.04	-12.81	40°08'40.810"N	104°33'24.099"W	1.51	
2642.00	7.090	328.980	2639.03	-56.22	56.53	-19.35	40°08'40.905"N	104°33'24.181"W	0.93	



Actual Wellpath Report  
HULLABALOO Y-21-756 AWP  
Page 3 of 10



REFERENCE WELLPATH IDENTIFICATION			
Operator	NOBLE ENERGY, INC	Slot	SLOT#06 HULLABALOO Y21-756(445'FNL&2617'FWL,SEC.16)
Area	COLORADO	Well	HULLABALOO Y21-756
Field	WELD COUNTY (NOBLE NAD 83 GRID)	Wellbore	HULLABALOO Y-21-756 AWB
Facility	SEC.16-T02N-R64W		

WELLPATH DATA (182 stations)										
MD [ft]	Inclination [°]	Azimuth [°]	TVD [ft]	Vert Sect [ft]	North [ft]	East [ft]	Latitude	Longitude	DLS [°/100ft]	Comments
2737.00	7.100	332.290	2733.30	-66.35	66.75	-25.10	40°08'41.006"N	104°33'24.254"W	0.43	
2832.00	7.190	338.640	2827.56	-77.00	77.49	-29.99	40°08'41.113"N	104°33'24.316"W	0.84	
2926.00	7.160	333.670	2920.83	-87.66	88.22	-34.73	40°08'41.219"N	104°33'24.375"W	0.66	
3021.00	7.180	322.570	3015.09	-97.58	98.24	-40.97	40°08'41.319"N	104°33'24.454"W	1.46	
3116.00	7.040	317.110	3109.36	-106.44	107.22	-48.54	40°08'41.409"N	104°33'24.550"W	0.73	
3210.00	7.100	312.750	3202.65	-114.47	115.38	-56.73	40°08'41.490"N	104°33'24.655"W	0.57	
3305.00	7.000	311.410	3296.93	-122.15	123.20	-65.38	40°08'41.568"N	104°33'24.765"W	0.20	
3399.00	7.040	311.460	3390.22	-129.61	130.80	-73.99	40°08'41.644"N	104°33'24.875"W	0.04	
3494.00	6.960	315.520	3484.52	-137.44	138.76	-82.39	40°08'41.724"N	104°33'24.982"W	0.53	
3589.00	7.160	323.160	3578.80	-146.16	147.61	-89.97	40°08'41.812"N	104°33'25.078"W	1.01	
3683.00	7.180	323.550	3672.06	-155.46	157.02	-96.97	40°08'41.906"N	104°33'25.167"W	0.06	
3778.00	7.280	331.420	3766.31	-165.42	167.08	-103.38	40°08'42.006"N	104°33'25.248"W	1.05	
3873.00	7.380	335.360	3860.53	-176.17	177.91	-108.80	40°08'42.113"N	104°33'25.317"W	0.54	
3967.00	7.360	332.520	3953.76	-186.91	188.74	-114.10	40°08'42.221"N	104°33'25.383"W	0.39	
4062.00	7.420	314.870	4047.98	-196.52	198.47	-121.25	40°08'42.318"N	104°33'25.474"W	2.38	
4156.00	7.370	293.300	4141.22	-203.04	205.14	-131.09	40°08'42.385"N	104°33'25.600"W	2.94	
4251.00	6.790	283.980	4235.50	-206.63	208.90	-142.14	40°08'42.423"N	104°33'25.742"W	1.35	
4345.00	7.280	294.160	4328.79	-210.24	212.68	-152.97	40°08'42.462"N	104°33'25.881"W	1.42	
4440.00	7.280	305.310	4423.03	-216.01	218.63	-163.37	40°08'42.522"N	104°33'26.014"W	1.48	
4534.00	7.430	310.470	4516.26	-223.25	226.01	-172.86	40°08'42.596"N	104°33'26.135"W	0.72	
4629.00	7.430	310.450	4610.46	-231.07	233.99	-182.20	40°08'42.675"N	104°33'26.254"W	0.00	
4723.00	7.300	310.260	4703.68	-238.73	241.79	-191.39	40°08'42.753"N	104°33'26.371"W	0.14	
4818.00	7.260	320.790	4797.92	-247.15	250.34	-199.79	40°08'42.839"N	104°33'26.478"W	1.40	
4912.00	7.160	326.800	4891.18	-256.54	259.84	-206.75	40°08'42.933"N	104°33'26.567"W	0.81	
5007.00	7.240	336.160	4985.43	-266.88	270.27	-212.41	40°08'43.037"N	104°33'26.638"W	1.24	
5102.00	7.260	336.600	5079.68	-277.79	281.26	-217.21	40°08'43.146"N	104°33'26.698"W	0.06	
5196.00	7.270	335.050	5172.92	-288.55	292.10	-222.08	40°08'43.254"N	104°33'26.760"W	0.21	
5291.00	7.280	337.750	5267.16	-299.49	303.12	-226.90	40°08'43.363"N	104°33'26.820"W	0.36	
5385.00	7.210	343.600	5360.41	-310.60	314.29	-230.82	40°08'43.474"N	104°33'26.869"W	0.79	
5480.00	7.290	343.720	5454.65	-322.05	325.80	-234.19	40°08'43.588"N	104°33'26.911"W	0.09	



Actual Wellpath Report  
HULLABALOO Y-21-756 AWP  
Page 4 of 10



REFERENCE WELLPATH IDENTIFICATION			
Operator	NOBLE ENERGY, INC	Slot	SLOT#06 HULLABALOO Y21-756(445'FNL&2617'FWL,SEC.16)
Area	COLORADO	Well	HULLABALOO Y21-756
Field	WELD COUNTY (NOBLE NAD 83 GRID)	Wellbore	HULLABALOO Y-21-756 AWB
Facility	SEC.16-T02N-R64W		

WELLPATH DATA (182 stations)										
MD [ft]	Inclination [°]	Azimuth [°]	TVD [ft]	Vert Sect [ft]	North [ft]	East [ft]	Latitude	Longitude	DLS [°/100ft]	Comments
5574.00	7.310	339.160	5547.89	-333.30	337.11	-237.99	40°08'43.700"N	104°33'26.958"W	0.62	
5669.00	7.350	342.190	5642.11	-344.67	348.55	-242.00	40°08'43.814"N	104°33'27.008"W	0.41	
5763.00	7.310	335.390	5735.34	-355.76	359.71	-246.33	40°08'43.924"N	104°33'27.063"W	0.92	
5858.00	7.240	321.600	5829.59	-365.85	369.90	-252.56	40°08'44.026"N	104°33'27.141"W	1.84	
5953.00	7.170	319.320	5923.84	-374.92	379.08	-260.15	40°08'44.117"N	104°33'27.238"W	0.31	
6047.00	5.420	333.740	6017.27	-383.26	387.51	-265.94	40°08'44.201"N	104°33'27.311"W	2.50	
6142.00	5.450	340.710	6111.85	-391.48	395.80	-269.41	40°08'44.283"N	104°33'27.355"W	0.70	
6236.00	7.520	313.800	6205.26	-399.86	404.27	-275.33	40°08'44.368"N	104°33'27.430"W	3.85	
6331.00	13.860	236.250	6298.95	-397.61	402.24	-289.35	40°08'44.349"N	104°33'27.611"W	14.98	
6425.00	18.370	206.110	6389.39	-377.76	382.64	-305.26	40°08'44.157"N	104°33'27.818"W	9.95	
6520.00	25.040	204.710	6477.60	-345.79	350.90	-320.27	40°08'43.845"N	104°33'28.016"W	7.04	
6614.00	30.530	199.930	6560.74	-304.98	310.35	-336.74	40°08'43.446"N	104°33'28.233"W	6.30	
6709.00	34.990	189.190	6640.68	-255.14	260.71	-349.33	40°08'42.957"N	104°33'28.402"W	7.70	
6803.00	41.140	176.830	6714.76	-197.49	203.09	-351.93	40°08'42.388"N	104°33'28.444"W	10.39	
6898.00	50.970	174.070	6780.62	-129.51	135.01	-346.38	40°08'41.714"N	104°33'28.382"W	10.55	
6993.00	60.210	177.810	6834.26	-51.52	56.93	-340.98	40°08'40.942"N	104°33'28.323"W	10.25	
7087.00	69.600	182.280	6874.09	33.47	-28.08	-341.17	40°08'40.102"N	104°33'28.337"W	10.87	
7182.00	76.270	180.720	6901.96	124.23	-118.81	-343.53	40°08'39.206"N	104°33'28.380"W	7.19	
7276.00	83.090	176.800	6918.80	216.57	-211.19	-341.49	40°08'38.293"N	104°33'28.366"W	8.33	
7371.00	89.820	176.470	6924.67	311.07	-305.79	-335.93	40°08'37.358"N	104°33'28.307"W	7.09	
7465.00	90.150	176.920	6924.69	404.82	-399.63	-330.51	40°08'36.430"N	104°33'28.250"W	0.59	
7560.00	90.030	177.250	6924.54	499.60	-494.51	-325.68	40°08'35.492"N	104°33'28.201"W	0.37	
7654.00	90.120	177.570	6924.42	593.43	-588.42	-321.43	40°08'34.563"N	104°33'28.159"W	0.35	
7749.00	90.030	177.790	6924.29	688.28	-683.34	-317.59	40°08'33.625"N	104°33'28.123"W	0.25	
7843.00	90.030	178.800	6924.24	782.18	-777.29	-314.79	40°08'32.696"N	104°33'28.100"W	1.07	
7938.00	89.910	178.760	6924.29	877.11	-872.27	-312.77	40°08'31.757"N	104°33'28.087"W	0.13	
8032.00	90.090	179.360	6924.29	971.06	-966.26	-311.22	40°08'30.829"N	104°33'28.080"W	0.67	
8221.00	90.090	179.560	6924.00	1160.00	-1155.25	-309.44	40°08'28.961"N	104°33'28.082"W	0.11	
8315.00	90.060	181.970	6923.87	1254.00	-1249.24	-310.70	40°08'28.032"N	104°33'28.111"W	2.56	
8410.00	89.850	181.370	6923.95	1348.99	-1344.19	-313.47	40°08'27.094"N	104°33'28.160"W	0.67	



Actual Wellpath Report

HULLABALOO Y-21-756 AWP



REFERENCE WELLPATH IDENTIFICATION			
Operator	NOBLE ENERGY, INC	Slot	SLOT#06 HULLABALOO Y21-756(445'FNL&2617'FWL,SEC.16)
Area	COLORADO	Well	HULLABALOO Y21-756
Field	WELD COUNTY (NOBLE NAD 83 GRID)	Wellbore	HULLABALOO Y-21-756 AWB
Facility	SEC.16-T02N-R64W		

WELLPATH DATA (182 stations)										
MD [ft]	Inclination [°]	Azimuth [°]	TVD [ft]	Vert Sect [ft]	North [ft]	East [ft]	Latitude	Longitude	DLS [°/100ft]	Comments
8505.00	89.970	178.050	6924.10	1443.95	-1439.18	-312.99	40°08'26.156"N	104°33'28.167"W	3.50	
8599.00	90.310	177.020	6923.87	1537.79	-1533.09	-308.94	40°08'25.227"N	104°33'28.128"W	1.15	
8693.00	90.220	176.630	6923.43	1631.55	-1626.95	-303.74	40°08'24.299"N	104°33'28.074"W	0.43	
8788.00	90.460	176.480	6922.87	1726.27	-1721.77	-298.03	40°08'23.362"N	104°33'28.013"W	0.30	
8883.00	90.180	177.980	6922.34	1821.07	-1816.66	-293.44	40°08'22.423"N	104°33'27.967"W	1.61	
8977.00	90.430	177.560	6921.84	1914.93	-1910.58	-289.78	40°08'21.495"N	104°33'27.933"W	0.52	
9072.00	90.430	177.770	6921.13	2009.78	-2005.50	-285.91	40°08'20.557"N	104°33'27.896"W	0.22	
9166.00	90.400	178.040	6920.45	2103.65	-2099.44	-282.47	40°08'19.628"N	104°33'27.864"W	0.29	
9261.00	90.520	178.540	6919.68	2198.54	-2194.39	-279.64	40°08'18.689"N	104°33'27.841"W	0.54	
9356.00	90.490	178.340	6918.85	2293.45	-2289.35	-277.05	40°08'17.751"N	104°33'27.821"W	0.21	
9450.00	90.150	179.440	6918.32	2387.39	-2383.33	-275.23	40°08'16.822"N	104°33'27.810"W	1.22	
9545.00	89.970	180.870	6918.22	2482.38	-2478.33	-275.49	40°08'15.883"N	104°33'27.826"W	1.52	
9640.00	90.250	181.950	6918.04	2577.37	-2573.30	-277.83	40°08'14.945"N	104°33'27.869"W	1.17	
9734.00	90.220	183.150	6917.65	2671.33	-2667.20	-282.01	40°08'14.018"N	104°33'27.936"W	1.28	
9828.00	90.000	183.770	6917.47	2765.24	-2761.03	-287.68	40°08'13.091"N	104°33'28.022"W	0.70	
9923.00	90.150	184.840	6917.35	2860.07	-2855.76	-294.81	40°08'12.156"N	104°33'28.127"W	1.14	
10018.00	90.150	185.310	6917.10	2954.82	-2950.39	-303.22	40°08'11.222"N	104°33'28.248"W	0.49	
10112.00	90.000	183.590	6916.98	3048.64	-3044.10	-310.51	40°08'10.296"N	104°33'28.355"W	1.84	
10207.00	90.180	182.600	6916.83	3143.56	-3138.96	-315.64	40°08'09.359"N	104°33'28.434"W	1.06	
10301.00	90.310	181.830	6916.43	3237.54	-3232.89	-319.27	40°08'08.432"N	104°33'28.493"W	0.83	
10396.00	90.150	179.240	6916.04	3332.53	-3327.88	-320.16	40°08'07.493"N	104°33'28.518"W	2.73	
10490.00	90.150	176.360	6915.80	3426.38	-3421.80	-316.55	40°08'06.565"N	104°33'28.484"W	3.06	
10585.00	90.000	175.140	6915.67	3520.99	-3516.53	-309.51	40°08'05.628"N	104°33'28.406"W	1.29	
10679.00	90.150	175.270	6915.55	3614.53	-3610.20	-301.65	40°08'04.701"N	104°33'28.318"W	0.21	
10774.00	90.120	175.490	6915.33	3709.09	-3704.90	-294.00	40°08'03.765"N	104°33'28.232"W	0.23	
10868.00	90.150	174.460	6915.10	3802.58	-3798.53	-285.77	40°08'02.839"N	104°33'28.139"W	1.10	
10963.00	90.180	176.310	6914.83	3897.14	-3893.22	-278.12	40°08'01.902"N	104°33'28.054"W	1.95	
11057.00	90.150	178.470	6914.56	3990.95	-3987.12	-273.84	40°08'00.974"N	104°33'28.012"W	2.30	
11152.00	90.120	178.310	6914.34	4085.86	-4082.08	-271.17	40°08'00.035"N	104°33'27.990"W	0.17	
11247.00	89.970	178.920	6914.26	4180.78	-4177.05	-268.88	40°07'59.097"N	104°33'27.974"W	0.66	





Actual Wellpath Report  
HULLABALOO Y-21-756 AWP  
Page 6 of 10



REFERENCE WELLPATH IDENTIFICATION			
Operator	NOBLE ENERGY, INC	Slot	SLOT#06 HULLABALOO Y21-756(445'FNL&2617'FWL,SEC.16)
Area	COLORADO	Well	HULLABALOO Y21-756
Field	WELD COUNTY (NOBLE NAD 83 GRID)	Wellbore	HULLABALOO Y-21-756 AWB
Facility	SEC.16-T02N-R64W		

WELLPATH DATA (182 stations)										
MD [ft]	Inclination [°]	Azimuth [°]	TVD [ft]	Vert Sect [ft]	North [ft]	East [ft]	Latitude	Longitude	DLS [°/100ft]	Comments
11341.00	90.060	178.150	6914.24	4274.70	-4271.02	-266.47	40°07'58.168"N	104°33'27.956"W	0.82	
11436.00	90.250	179.200	6913.98	4369.63	-4365.99	-264.28	40°07'57.229"N	104°33'27.940"W	1.12	
11530.00	90.120	180.540	6913.68	4463.61	-4459.99	-264.06	40°07'56.300"N	104°33'27.950"W	1.43	
11625.00	90.090	180.570	6913.50	4558.61	-4554.99	-264.99	40°07'55.362"N	104°33'27.975"W	0.04	
11719.00	90.060	180.690	6913.38	4652.61	-4648.98	-266.02	40°07'54.433"N	104°33'28.001"W	0.13	
11814.00	90.150	180.130	6913.21	4747.60	-4743.98	-266.70	40°07'53.494"N	104°33'28.023"W	0.60	
11908.00	90.120	180.050	6912.98	4841.59	-4837.98	-266.85	40°07'52.565"N	104°33'28.038"W	0.09	
12003.00	90.030	181.540	6912.86	4936.59	-4932.96	-268.16	40°07'51.627"N	104°33'28.068"W	1.57	
12098.00	89.910	181.650	6912.91	5031.58	-5027.93	-270.81	40°07'50.689"N	104°33'28.115"W	0.17	
12192.00	90.060	181.830	6912.93	5125.57	-5121.88	-273.66	40°07'49.761"N	104°33'28.164"W	0.25	
12287.00	90.250	181.130	6912.68	5220.57	-5216.85	-276.12	40°07'48.823"N	104°33'28.209"W	0.76	
12381.00	90.220	180.210	6912.29	5314.57	-5310.84	-277.22	40°07'47.894"N	104°33'28.236"W	0.98	
12476.00	90.120	178.630	6912.01	5409.53	-5405.83	-276.25	40°07'46.955"N	104°33'28.237"W	1.67	
12570.00	90.150	178.620	6911.79	5503.46	-5499.81	-274.00	40°07'46.026"N	104°33'28.220"W	0.03	
12665.00	90.120	179.000	6911.56	5598.39	-5594.79	-272.03	40°07'45.088"N	104°33'28.208"W	0.40	
12759.00	90.920	181.320	6910.71	5692.37	-5688.77	-272.29	40°07'44.159"N	104°33'28.224"W	2.61	
12853.00	90.060	179.620	6909.91	5786.36	-5782.76	-273.06	40°07'43.230"N	104°33'28.247"W	2.03	
12948.00	90.120	177.690	6909.76	5881.28	-5877.73	-270.83	40°07'42.291"N	104°33'28.231"W	2.03	
13042.00	90.120	176.460	6909.56	5975.07	-5971.61	-266.03	40°07'41.363"N	104°33'28.182"W	1.31	
13136.00	90.220	175.800	6909.28	6068.74	-6065.39	-259.69	40°07'40.436"N	104°33'28.114"W	0.71	
13231.00	90.060	176.110	6909.05	6163.39	-6160.16	-252.99	40°07'39.499"N	104°33'28.040"W	0.37	
13325.00	89.940	176.040	6909.05	6257.05	-6253.94	-246.55	40°07'38.571"N	104°33'27.970"W	0.15	
13420.00	90.120	175.480	6909.00	6351.67	-6348.68	-239.53	40°07'37.635"N	104°33'27.893"W	0.62	
13514.00	90.090	174.800	6908.83	6445.19	-6442.34	-231.56	40°07'36.708"N	104°33'27.803"W	0.72	
13609.00	89.910	174.270	6908.83	6539.61	-6536.90	-222.52	40°07'35.773"N	104°33'27.700"W	0.59	
13798.00	90.030	176.910	6908.93	6727.78	-6725.33	-207.99	40°07'33.909"N	104°33'27.538"W	1.40	
13892.00	89.970	175.540	6908.93	6821.46	-6819.12	-201.80	40°07'32.982"N	104°33'27.472"W	1.46	
13987.00	90.220	176.510	6908.77	6916.12	-6913.89	-195.21	40°07'32.045"N	104°33'27.400"W	1.05	
14081.00	90.090	178.680	6908.52	7009.95	-7007.80	-191.27	40°07'31.116"N	104°33'27.362"W	2.31	
14176.00	90.180	178.390	6908.29	7104.87	-7102.77	-188.84	40°07'30.178"N	104°33'27.344"W	0.32	



Actual Wellpath Report

HULLABALOO Y-21-756 AWP



REFERENCE WELLPATH IDENTIFICATION			
Operator	NOBLE ENERGY, INC	Slot	SLOT#06 HULLABALOO Y21-756(445'FNL&2617'FWL,SEC.16)
Area	COLORADO	Well	HULLABALOO Y21-756
Field	WELD COUNTY (NOBLE NAD 83 GRID)	Wellbore	HULLABALOO Y-21-756 AWB
Facility	SEC.16-T02N-R64W		

WELLPATH DATA (182 stations)										
MD [ft]	Inclination [°]	Azimuth [°]	TVD [ft]	Vert Sect [ft]	North [ft]	East [ft]	Latitude	Longitude	DLS [°/100ft]	Comments
14270.00	90.000	179.060	6908.14	7198.80	-7196.75	-186.75	40°07'29.249"N	104°33'27.329"W	0.74	
14365.00	90.120	178.230	6908.04	7293.73	-7291.72	-184.50	40°07'28.310"N	104°33'27.314"W	0.88	
14460.00	89.940	178.410	6907.99	7388.63	-7386.68	-181.72	40°07'27.371"N	104°33'27.291"W	0.27	
14554.00	90.060	178.130	6907.99	7482.53	-7480.64	-178.88	40°07'26.443"N	104°33'27.267"W	0.32	
14648.00	90.120	178.760	6907.85	7576.44	-7574.60	-176.33	40°07'25.514"N	104°33'27.247"W	0.67	
14743.00	90.280	178.630	6907.52	7671.37	-7669.58	-174.16	40°07'24.575"N	104°33'27.232"W	0.22	
14837.00	90.120	179.830	6907.19	7765.33	-7763.57	-172.90	40°07'23.646"N	104°33'27.229"W	1.29	
14932.00	90.120	180.430	6906.99	7860.32	-7858.56	-173.12	40°07'22.708"N	104°33'27.245"W	0.63	
15026.00	90.150	180.430	6906.77	7954.32	-7952.56	-173.82	40°07'21.779"N	104°33'27.266"W	0.03	
15121.00	90.060	180.100	6906.59	8049.31	-8047.56	-174.26	40°07'20.840"N	104°33'27.285"W	0.36	
15216.00	90.030	179.050	6906.52	8144.28	-8142.56	-173.56	40°07'19.901"N	104°33'27.289"W	1.11	
15310.00	90.310	178.520	6906.24	8238.22	-8236.53	-171.56	40°07'18.972"N	104°33'27.276"W	0.64	
15404.00	90.000	178.490	6905.98	8332.13	-8330.50	-169.11	40°07'18.044"N	104°33'27.258"W	0.33	
15499.00	90.120	181.170	6905.89	8427.11	-8425.49	-168.83	40°07'17.105"N	104°33'27.267"W	2.82	
15593.00	89.940	181.220	6905.84	8521.11	-8519.47	-170.79	40°07'16.177"N	104°33'27.305"W	0.20	
15688.00	90.060	181.800	6905.84	8616.10	-8614.44	-173.29	40°07'15.238"N	104°33'27.350"W	0.62	
15782.00	90.550	182.470	6905.34	8710.08	-8708.37	-176.79	40°07'14.311"N	104°33'27.408"W	0.88	
15877.00	90.490	180.910	6904.47	8805.06	-8803.32	-179.60	40°07'13.373"N	104°33'27.457"W	1.64	
15972.00	90.060	178.400	6904.02	8900.03	-8898.31	-179.02	40°07'12.434"N	104°33'27.463"W	2.68	
16066.00	90.340	176.960	6903.69	8993.88	-8992.23	-175.22	40°07'11.505"N	104°33'27.427"W	1.56	
16161.00	90.250	176.190	6903.20	9088.61	-9087.06	-169.54	40°07'10.568"N	104°33'27.367"W	0.82	
16255.00	90.250	175.910	6902.79	9182.27	-9180.84	-163.07	40°07'09.640"N	104°33'27.296"W	0.30	
16350.00	90.250	174.290	6902.38	9276.78	-9275.49	-154.95	40°07'08.704"N	104°33'27.205"W	1.71	
16444.00	90.150	174.600	6902.05	9370.18	-9369.04	-145.85	40°07'07.779"N	104°33'27.100"W	0.35	
16539.00	90.220	175.050	6901.74	9464.64	-9463.66	-137.29	40°07'06.843"N	104°33'27.003"W	0.48	
16633.00	90.180	176.010	6901.41	9558.23	-9557.37	-129.96	40°07'05.916"N	104°33'26.921"W	1.02	
16728.00	90.280	177.450	6901.03	9652.97	-9652.21	-124.54	40°07'04.978"N	104°33'26.865"W	1.52	
16822.00	90.180	178.570	6900.65	9746.85	-9746.15	-121.28	40°07'04.050"N	104°33'26.836"W	1.20	
16917.00	90.090	179.780	6900.43	9841.80	-9841.14	-119.91	40°07'03.111"N	104°33'26.831"W	1.28	
17012.00	90.180	180.480	6900.21	9936.79	-9936.14	-120.12	40°07'02.172"N	104°33'26.847"W	0.74	





Actual Wellpath Report

HULLABALOO Y-21-756 AWP



REFERENCE WELLPATH IDENTIFICATION			
Operator	NOBLE ENERGY, INC	Slot	SLOT#06 HULLABALOO Y21-756(445'FNL&2617'FWL,SEC.16)
Area	COLORADO	Well	HULLABALOO Y21-756
Field	WELD COUNTY (NOBLE NAD 83 GRID)	Wellbore	HULLABALOO Y-21-756 AWB
Facility	SEC.16-T02N-R64W		

WELLPATH DATA (182 stations)										
MD [ft]	Inclination [°]	Azimuth [°]	TVD [ft]	Vert Sect [ft]	North [ft]	East [ft]	Latitude	Longitude	DLS [°/100ft]	Comments
17088.00	90.150	181.400	6899.99	10012.79	-10012.13	-121.37	40°07'01.422"N	104°33'26.873"W	1.21	Last BHI MWS Survey
17112.00	90.150	181.400	6899.92	10036.79	-10036.12	-121.96	40°07'01.185"N	104°33'26.884"W	0.00	Projection to Bit

HOLE & CASING SECTIONS - Ref Wellbore: HULLABALOO Y-21-756 AWB      Ref Wellpath: HULLABALOO Y-21-756 AWP									
String/Diameter	Start MD [ft]	End MD [ft]	Interval [ft]	Start TVD [ft]	End TVD [ft]	Start N/S [ft]	Start E/W [ft]	End N/S [ft]	End E/W [ft]
13.5in Open Hole	30.00	2050.00	2020.00	30.00	2049.88	-0.03	0.08	12.52	4.74
9.625in Casing Surface	30.00	2050.00	2020.00	30.00	2049.88	-0.03	0.08	12.52	4.74
8.5in Open Hole	2050.00	17112.00	15062.00	2049.88	6899.92	12.52	4.74	-10036.12	-121.96



Actual Wellpath Report

HULLABALOO Y-21-756 AWP

Page 9 of 10



REFERENCE WELLPATH IDENTIFICATION			
Operator	NOBLE ENERGY, INC	Slot	SLOT#06 HULLABALOO Y21-756(445'FNL&2617'FWL,SEC.16)
Area	COLORADO	Well	HULLABALOO Y21-756
Field	WELD COUNTY (NOBLE NAD 83 GRID)	Wellbore	HULLABALOO Y-21-756 AWB
Facility	SEC.16-T02N-R64W		

TARGETS								
Name	TVD [ft]	North [ft]	East [ft]	Grid East [US ft]	Grid North [US ft]	Latitude	Longitude	Shape
HULLABALOO Y21-787 SECTION 16	29.00	-7.89	-1775.30	3261942.56	1296894.28	40°08'40.452"N	104°33'46.800"W	polygon
HULLABALOO Y21-787 SECTION 21	29.00	-7.89	-1775.30	3261942.56	1296894.28	40°08'40.452"N	104°33'46.800"W	polygon
HULLABALOO Y21-756 BHL(100'FSL&2225'FWL,SEC.21)	6899.41	-10038.59	-158.92	3263558.87	1286864.01	40°07'01.164"N	104°33'27.360"W	point
HULLABALOO Y21-756 LANDING POINT(715'FNL&2275'FWL,SEC.16)	6925.00	-265.00	-345.00	3263372.80	1296637.18	40°08'37.762"N	104°33'28.419"W	point
HULLABALOO Y21-787 SECTION 16 HARDLINE (460'SETBACK)	7219.00	-7.89	-1775.30	3261942.56	1296894.28	40°08'40.452"N	104°33'46.800"W	polygon
HULLABALOO Y21-787 SECTION 21 HARDLINE(460'SETBACK)	7219.00	-7.89	-1775.30	3261942.56	1296894.28	40°08'40.452"N	104°33'46.800"W	polygon

WELLPATH COMPOSITION - Ref Wellbore: HULLABALOO Y-21-756 AWB    Ref Wellpath: HULLABALOO Y-21-756 AWP				
Start MD [ft]	End MD [ft]	Positional Uncertainty Model	Log Name/Comment	Wellbore
0.00	2044.00	Gyrodata standard - Drop gyro or Multi-shot	3rd Party Gyros <81-2044>	HULLABALOO Y-21-756 AWB
2044.00	17088.00	OWSG MWD rev2 + IFR1 + Multi-Station Correction	BHI/ATCurve 8.5" Hole OWSG, MWD <2075'-17088>	HULLABALOO Y-21-756 AWB
17088.00	17112.00	Blind Drilling (std)	Projection to bit	HULLABALOO Y-21-756 AWB



Actual Wellpath Report

HULLABALOO Y-21-756 AWP

Page 10 of 10



REFERENCE WELLPATH IDENTIFICATION			
Operator	NOBLE ENERGY, INC	Slot	SLOT#06 HULLABALOO Y21-756(445'FNL&2617'FWL,SEC.16)
Area	COLORADO	Well	HULLABALOO Y21-756
Field	WELD COUNTY (NOBLE NAD 83 GRID)	Wellbore	HULLABALOO Y-21-756 AWB
Facility	SEC.16-T02N-R64W		

WELLPATH COMMENTS				
MD [ft]	Inclination [°]	Azimuth [°]	TVD [ft]	Comment
2044.00	0.100	72.830	2043.88	Tie to Surface Surveys
17088.00	90.150	181.400	6899.99	Last BHI MWS Survey
17112.00	90.150	181.400	6899.92	Projection to Bit

COMMENTS
<div>Wellpath general comments</div> <div>SURFACE LOCATION: NENW</div> <div>40.14454 N</div> <div>104.55665 W</div> <div>API: 05-123-45240</div>