

Well: Silverton 5-01-1L  
Site: Section 04-T04N-R63W  
Project: Weld County, Colorado  
Wellbore: Original hole  
Design: plan1

#### Section Details

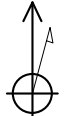
Sec	MD	Inc	Azi	TVD	+N/-S	+E/-W	Dleg	VSec	Annotation
1	0.00	0.00	0.00	0.00	0.00	0.00	0.00	0.00	
2	2000.00	0.00	0.00	2000.00	0.00	0.00	0.00	0.00	KOP Begin 2°/100' build
3	3509.26	30.19	356.24	3440.41	387.62	-25.45	2.00	102.21	Begin 30.19° tangent section
4	6296.20	30.19	356.24	5849.45	1785.87	-117.26	0.00	470.92	Begin 10°/100' build/turn
5	7177.72	90.00	269.92	6329.00	2063.42	-690.32	10.00	1087.80	LP Begin 90° lateral
6	11945.53	90.00	269.92	6329.00	2056.67	-5458.12	0.00	5758.56	Begin 2°/100' turn
7	11950.56	90.00	270.02	6329.00	2056.67	-5463.15	2.00	5763.49	Begin 90.00° lateral section
8	16605.17	90.00	270.02	6329.00	2058.25	-10117.76	0.00	10324.99	PBHL/TD 16605.17 MD 6329.00 TVD

#### DESIGN TARGET DETAILS

Name	TVD	+N/-S	+E/-W	Northing	Easting	Latitude	Longitude
Silverton 5-01-1L SL 2534 FNL 255 FWL	24.00	0.00	0.00	14651657.20	1793254.01	40.34175407	-104.45150884
Silverton 5-01-1L BHL 470 FNL 470 FWL	6329.00	2058.25	-10117.76	14653652.70	1783123.71	40.34740022	-104.48782083
Silverton 5-01-1L Int 470 FNL sect line	6329.00	2056.67	-5458.12	14653680.00	1787783.26	40.34739993	-104.47109767
Silverton 5-01-1L LP 470 FNL 470 FEL	6329.00	2063.42	-690.32	14653716.30	1792550.92	40.34742010	-104.45398634

Silverton 5-01-1L			
Surf loc: 2534 FNL 255 FWL Section 04-T04N-R63W			
NAD83 Colorado - HARN			
Universal Transverse Mercator (US Survey Feet)			
Zone 13N (108 W to 102 W)			
RKB=4628+24 @ 4652.00ft			
Northing	Easting	Latitude	Longitude
14651657.20	1793254.01	40.34175407	-104.45150884

T M

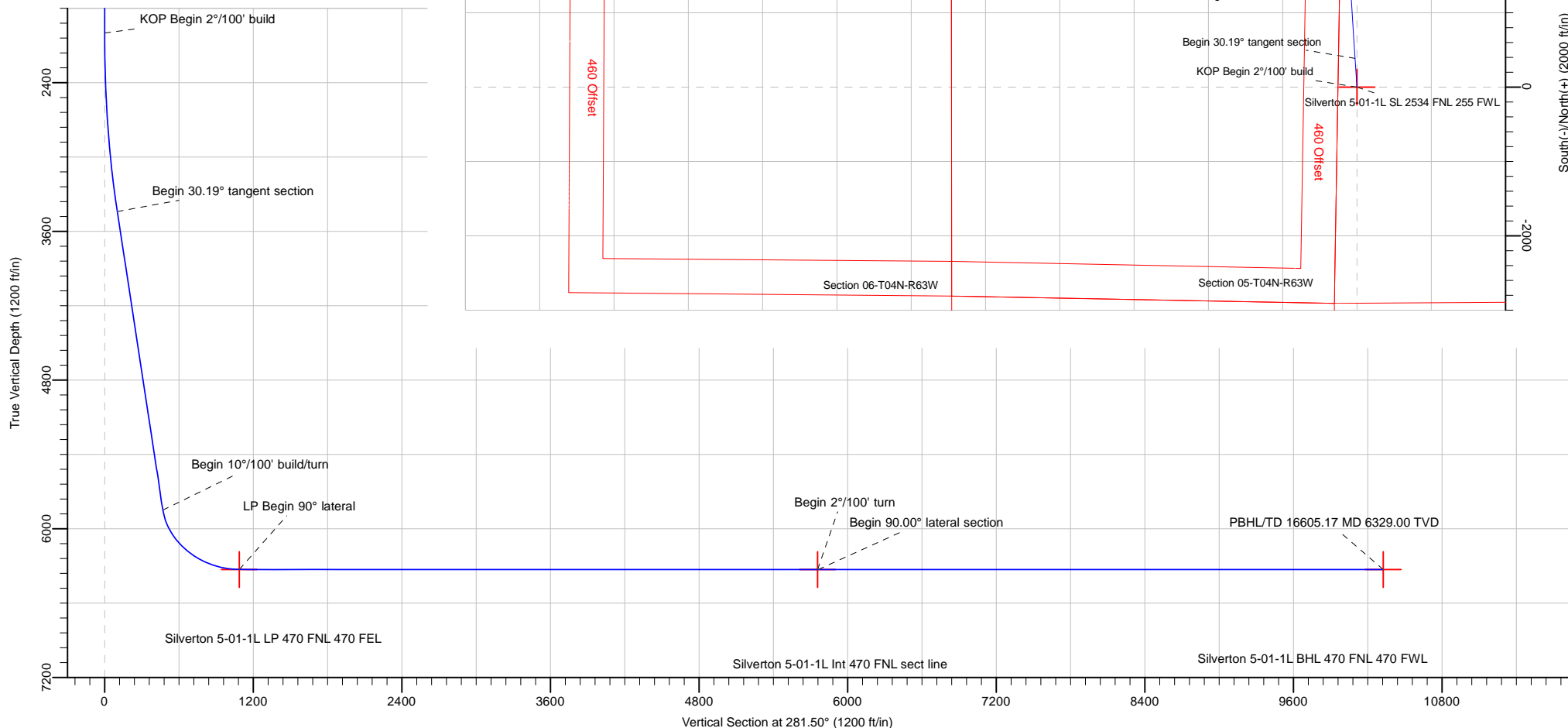
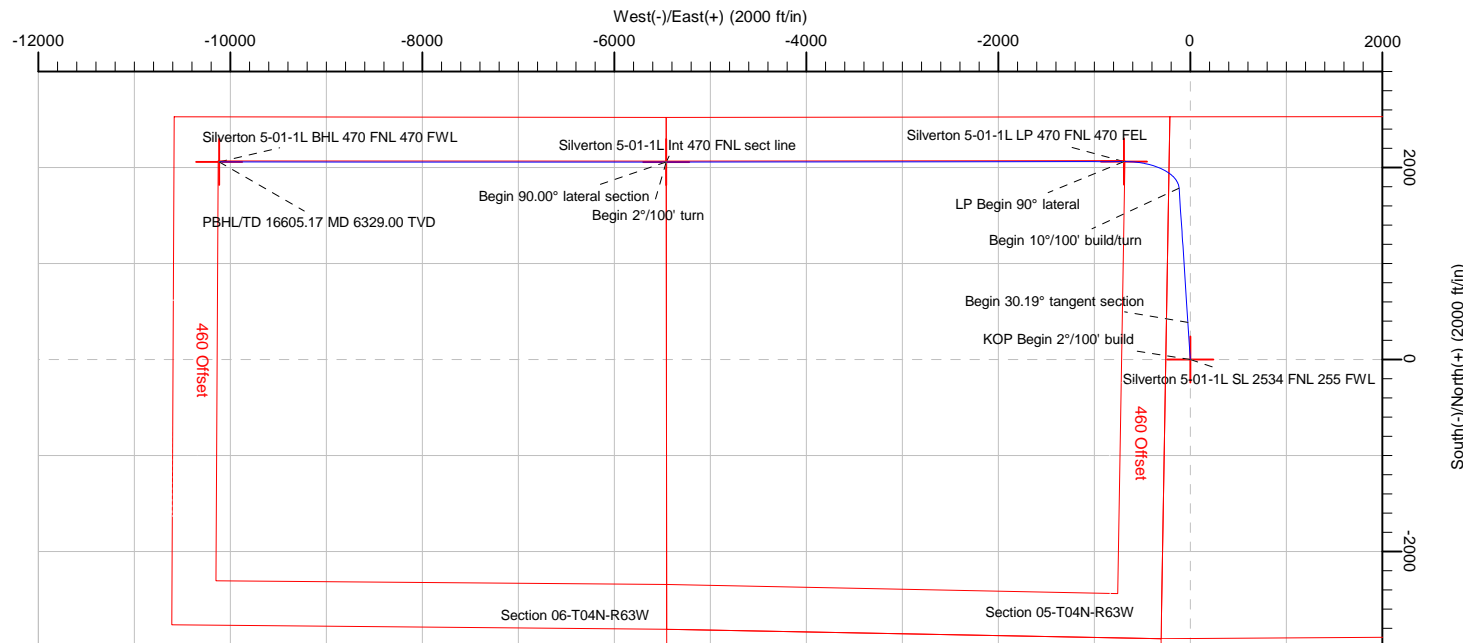


Azimuths to True North  
Magnetic North: 8.08°

Magnetic Field  
Strength: 52227.6snT  
Dip Angle: 66.90°  
Date: 5/29/2018  
Model: HDGM



PRODIRECTIONAL



Note: All lease lines and hard lines are estimates only and are subject to customers approval.

<b>Database:</b>	DB_Aug0116_LT_v14	<b>Local Co-ordinate Reference:</b>	Well Silverton 5-01-1L
<b>Company:</b>	Confluence Resources	<b>TVD Reference:</b>	RKB=4628+24 @ 4652.00ft
<b>Project:</b>	Weld County, Colorado	<b>MD Reference:</b>	RKB=4628+24 @ 4652.00ft
<b>Site:</b>	Section 04-T04N-R63W	<b>North Reference:</b>	True
<b>Well:</b>	Silverton 5-01-1L	<b>Survey Calculation Method:</b>	Minimum Curvature
<b>Wellbore:</b>	Original hole		
<b>Design:</b>	plan1		

<b>Project</b>	Weld County, Colorado		
<b>Map System:</b>	Universal Transverse Mercator (US Survey Feet)	<b>System Datum:</b>	Mean Sea Level
<b>Geo Datum:</b>	NAD83 Colorado - HARN		
<b>Map Zone:</b>	Zone 13N (108 W to 102 W)		

Site	Section 04-T04N-R63W					
Site Position:		Northing:	14,650,073.90 usft	Latitude:	40.33740565	
From:	Map	Easting:	1,793,302.13 usft	Longitude:	-104.45137138	
Position Uncertainty:		0.00 ft	Slot Radius:	13-3/16 "	Grid Convergence:	0.36

Well	Silverton 5-01-1L, Surf loc: 2534 FNL 255 FWL Section 04-T04N-R63W					
Well Position	+N/-S	0.00 ft	Northing:	14,651,657.20 usft	Latitude:	40.34175406
	+E/-W	0.00 ft	Easting:	1,793,254.01 usft	Longitude:	-104.45150885
Position Uncertainty		0.00 ft	Wellhead Elevation:		Ground Level:	4,628.00 ft

<b>Wellbore</b>	Original hole				
<b>Magnetics</b>	<b>Model Name</b>	<b>Sample Date</b>	<b>Declination (°)</b>	<b>Dip Angle (°)</b>	<b>Field Strength (nT)</b>
	HDGM	5/29/2018	8.08	66.90	52,227.60000000

<b>Design</b>	plan1			
<b>Audit Notes:</b>				
<b>Version:</b>	<b>Phase:</b>	PLAN	<b>Tie On Depth:</b>	0.00
<b>Vertical Section:</b>	<b>Depth From (TVD) (ft)</b>	<b>+N/-S (ft)</b>	<b>+E/-W (ft)</b>	<b>Direction (°)</b>
	0.00	0.00	0.00	281.50

<b>Plan Survey Tool Program</b>	<b>Date</b>	5/29/2018		
<b>Depth From (ft)</b>	<b>Depth To (ft)</b>	<b>Survey (Wellbore)</b>	<b>Tool Name</b>	<b>Remarks</b>
1	0.00	16,605.17 plan1 (Original hole)		

<b>Plan Sections</b>										
<b>Measured Depth (ft)</b>	<b>Inclination (°)</b>	<b>Azimuth (°)</b>	<b>Vertical Depth (ft)</b>	<b>+N/-S (ft)</b>	<b>+E/-W (ft)</b>	<b>Dogleg Rate (°/100ft)</b>	<b>Build Rate (°/100ft)</b>	<b>Turn Rate (°/100ft)</b>	<b>TFO (°)</b>	<b>Target</b>
0.00	0.00	0.00	0.00	0.00	0.00	0.00	0.00	0.00	0.00	
2,000.00	0.00	0.00	2,000.00	0.00	0.00	0.00	0.00	0.00	0.00	
3,509.26	30.19	356.24	3,440.41	387.62	-25.45	2.00	2.00	0.00	356.24	
6,296.20	30.19	356.24	5,849.45	1,785.87	-117.26	0.00	0.00	0.00	0.00	
7,177.72	90.00	269.92	6,329.00	2,063.42	-690.32	10.00	6.79	-9.79	-86.82	Silverton 5-01-1L LP 4
11,945.53	90.00	269.92	6,329.00	2,056.67	-5,458.12	0.00	0.00	0.00	0.00	Silverton 5-01-1L Int 4
11,950.56	90.00	270.02	6,329.00	2,056.67	-5,463.15	2.00	0.00	2.00	90.00	
16,605.17	90.00	270.02	6,329.00	2,058.25	-10,117.76	0.00	0.00	0.00	0.00	Silverton 5-01-1L BHL

<b>Database:</b>	DB_Aug0116_LT_v14	<b>Local Co-ordinate Reference:</b>	Well Silverton 5-01-1L
<b>Company:</b>	Confluence Resources	<b>TVD Reference:</b>	RKB=4628+24 @ 4652.00ft
<b>Project:</b>	Weld County, Colorado	<b>MD Reference:</b>	RKB=4628+24 @ 4652.00ft
<b>Site:</b>	Section 04-T04N-R63W	<b>North Reference:</b>	True
<b>Well:</b>	Silverton 5-01-1L	<b>Survey Calculation Method:</b>	Minimum Curvature
<b>Wellbore:</b>	Original hole		
<b>Design:</b>	plan1		

Planned Survey									
Measured Depth (ft)	Inclination (°)	Azimuth (°)	Vertical Depth (ft)	+N/-S (ft)	+E/-W (ft)	Map Northing (usft)	Map Easting (usft)	Latitude	Longitude
0.00	0.00	0.00	0.00	0.00	0.00	14,651,657.20	1,793,254.01	40.34175406	-104.45150885
100.00	0.00	0.00	100.00	0.00	0.00	14,651,657.20	1,793,254.01	40.34175406	-104.45150885
200.00	0.00	0.00	200.00	0.00	0.00	14,651,657.20	1,793,254.01	40.34175406	-104.45150885
300.00	0.00	0.00	300.00	0.00	0.00	14,651,657.20	1,793,254.01	40.34175406	-104.45150885
400.00	0.00	0.00	400.00	0.00	0.00	14,651,657.20	1,793,254.01	40.34175406	-104.45150885
500.00	0.00	0.00	500.00	0.00	0.00	14,651,657.20	1,793,254.01	40.34175406	-104.45150885
600.00	0.00	0.00	600.00	0.00	0.00	14,651,657.20	1,793,254.01	40.34175406	-104.45150885
700.00	0.00	0.00	700.00	0.00	0.00	14,651,657.20	1,793,254.01	40.34175406	-104.45150885
800.00	0.00	0.00	800.00	0.00	0.00	14,651,657.20	1,793,254.01	40.34175406	-104.45150885
900.00	0.00	0.00	900.00	0.00	0.00	14,651,657.20	1,793,254.01	40.34175406	-104.45150885
1,000.00	0.00	0.00	1,000.00	0.00	0.00	14,651,657.20	1,793,254.01	40.34175406	-104.45150885
1,100.00	0.00	0.00	1,100.00	0.00	0.00	14,651,657.20	1,793,254.01	40.34175406	-104.45150885
1,200.00	0.00	0.00	1,200.00	0.00	0.00	14,651,657.20	1,793,254.01	40.34175406	-104.45150885
1,300.00	0.00	0.00	1,300.00	0.00	0.00	14,651,657.20	1,793,254.01	40.34175406	-104.45150885
1,400.00	0.00	0.00	1,400.00	0.00	0.00	14,651,657.20	1,793,254.01	40.34175406	-104.45150885
1,500.00	0.00	0.00	1,500.00	0.00	0.00	14,651,657.20	1,793,254.01	40.34175406	-104.45150885
1,600.00	0.00	0.00	1,600.00	0.00	0.00	14,651,657.20	1,793,254.01	40.34175406	-104.45150885
1,700.00	0.00	0.00	1,700.00	0.00	0.00	14,651,657.20	1,793,254.01	40.34175406	-104.45150885
1,800.00	0.00	0.00	1,800.00	0.00	0.00	14,651,657.20	1,793,254.01	40.34175406	-104.45150885
1,900.00	0.00	0.00	1,900.00	0.00	0.00	14,651,657.20	1,793,254.01	40.34175406	-104.45150885
2,000.00	0.00	0.00	2,000.00	0.00	0.00	14,651,657.20	1,793,254.01	40.34175406	-104.45150885
<b>KOP Begin 2°/100' build</b>									
2,100.00	2.00	356.24	2,099.98	1.74	-0.11	14,651,658.94	1,793,253.88	40.34175884	-104.45150926
2,200.00	4.00	356.24	2,199.84	6.96	-0.46	14,651,664.16	1,793,253.51	40.34177318	-104.45151049
2,300.00	6.00	356.24	2,299.45	15.66	-1.03	14,651,672.85	1,793,252.88	40.34179706	-104.45151254
2,400.00	8.00	356.24	2,398.70	27.82	-1.83	14,651,685.01	1,793,252.01	40.34183046	-104.45151540
2,500.00	10.00	356.24	2,497.47	43.43	-2.85	14,651,700.61	1,793,250.89	40.34187332	-104.45151908
2,600.00	12.00	356.24	2,595.62	62.47	-4.10	14,651,719.64	1,793,249.52	40.34192560	-104.45152357
2,700.00	14.00	356.24	2,693.06	84.91	-5.58	14,651,742.07	1,793,247.91	40.34198723	-104.45152886
2,800.00	16.00	356.24	2,789.64	110.74	-7.27	14,651,767.89	1,793,246.05	40.34205815	-104.45153494
2,900.00	18.00	356.24	2,885.27	139.91	-9.19	14,651,797.05	1,793,243.96	40.34213825	-104.45154182
3,000.00	20.00	356.24	2,979.82	172.40	-11.32	14,651,829.52	1,793,241.62	40.34222746	-104.45154947
3,100.00	22.00	356.24	3,073.17	208.15	-13.67	14,651,865.26	1,793,239.05	40.34232565	-104.45155790
3,200.00	24.00	356.24	3,165.21	247.14	-16.23	14,651,904.23	1,793,236.25	40.34243270	-104.45156708
3,300.00	26.00	356.24	3,255.84	289.31	-19.00	14,651,946.38	1,793,233.22	40.34254850	-104.45157702
3,400.00	28.00	356.24	3,344.94	334.61	-21.97	14,651,991.66	1,793,229.77	40.34267289	-104.45158770
3,500.00	30.00	356.24	3,432.39	382.98	-25.15	14,652,040.02	1,793,226.49	40.34280572	-104.45159909
3,509.26	30.19	356.24	3,440.41	387.62	-25.45	14,652,044.65	1,793,226.16	40.34281844	-104.45160019
<b>Begin 30.19° tangent section</b>									
3,600.00	30.19	356.24	3,518.84	433.14	-28.44	14,652,090.15	1,793,222.89	40.34294345	-104.45161091
3,700.00	30.19	356.24	3,605.28	483.31	-31.74	14,652,140.31	1,793,219.28	40.34308122	-104.45162274
3,800.00	30.19	356.24	3,691.72	533.49	-35.03	14,652,190.46	1,793,215.67	40.34321899	-104.45163456
3,900.00	30.19	356.24	3,778.16	583.66	-38.32	14,652,240.61	1,793,212.07	40.34335676	-104.45164638
4,000.00	30.19	356.24	3,864.60	633.83	-41.62	14,652,290.76	1,793,208.46	40.34349453	-104.45165821
4,100.00	30.19	356.24	3,951.05	684.00	-44.91	14,652,340.91	1,793,204.86	40.34363230	-104.45167003
4,200.00	30.19	356.24	4,037.49	734.17	-48.21	14,652,391.06	1,793,201.25	40.34377006	-104.45168185
4,300.00	30.19	356.24	4,123.93	784.34	-51.50	14,652,441.21	1,793,197.65	40.34390783	-104.45169367
4,400.00	30.19	356.24	4,210.37	834.52	-54.80	14,652,491.36	1,793,194.04	40.34404560	-104.45170550
4,500.00	30.19	356.24	4,296.81	884.69	-58.09	14,652,541.51	1,793,190.44	40.34418337	-104.45171732
4,600.00	30.19	356.24	4,383.25	934.86	-61.38	14,652,591.66	1,793,186.83	40.34432114	-104.45172914
4,700.00	30.19	356.24	4,469.69	985.03	-64.68	14,652,641.81	1,793,183.23	40.34445891	-104.45174097
4,800.00	30.19	356.24	4,556.13	1,035.20	-67.97	14,652,691.96	1,793,179.62	40.34459668	-104.45175279
4,900.00	30.19	356.24	4,642.57	1,085.37	-71.27	14,652,742.11	1,793,176.02	40.34473445	-104.45176461
5,000.00	30.19	356.24	4,729.01	1,135.55	-74.56	14,652,792.26	1,793,172.41	40.34487221	-104.45177644

<b>Database:</b>	DB_Aug0116_LT_v14	<b>Local Co-ordinate Reference:</b>	Well Silverton 5-01-1L
<b>Company:</b>	Confluence Resources	<b>TVD Reference:</b>	RKB=4628+24 @ 4652.00ft
<b>Project:</b>	Weld County, Colorado	<b>MD Reference:</b>	RKB=4628+24 @ 4652.00ft
<b>Site:</b>	Section 04-T04N-R63W	<b>North Reference:</b>	True
<b>Well:</b>	Silverton 5-01-1L	<b>Survey Calculation Method:</b>	Minimum Curvature
<b>Wellbore:</b>	Original hole		
<b>Design:</b>	plan1		

Planned Survey									
Measured Depth (ft)	Inclination (°)	Azimuth (°)	Vertical Depth (ft)	+N/-S (ft)	+E/-W (ft)	Map Northing (usft)	Map Easting (usft)	Latitude	Longitude
5,100.00	30.19	356.24	4,815.45	1,185.72	-77.86	14,652,842.41	1,793,168.81	40.34500998	-104.45178826
5,200.00	30.19	356.24	4,901.89	1,235.89	-81.15	14,652,892.56	1,793,165.20	40.34514775	-104.45180008
5,300.00	30.19	356.24	4,988.33	1,286.06	-84.44	14,652,942.71	1,793,161.60	40.34528552	-104.45181191
5,400.00	30.19	356.24	5,074.77	1,336.23	-87.74	14,652,992.86	1,793,157.99	40.34542329	-104.45182373
5,500.00	30.19	356.24	5,161.21	1,386.40	-91.03	14,653,043.01	1,793,154.39	40.34556106	-104.45183555
5,600.00	30.19	356.24	5,247.65	1,436.57	-94.33	14,653,093.16	1,793,150.78	40.34569883	-104.45184738
5,700.00	30.19	356.24	5,334.09	1,486.75	-97.62	14,653,143.31	1,793,147.18	40.34583659	-104.45185920
5,800.00	30.19	356.24	5,420.53	1,536.92	-100.92	14,653,193.46	1,793,143.57	40.34597436	-104.45187102
5,900.00	30.19	356.24	5,506.97	1,587.09	-104.21	14,653,243.61	1,793,139.97	40.34611213	-104.45188285
6,000.00	30.19	356.24	5,593.41	1,637.26	-107.51	14,653,293.76	1,793,136.36	40.34624990	-104.45189467
6,100.00	30.19	356.24	5,679.86	1,687.43	-110.80	14,653,343.91	1,793,132.76	40.34638767	-104.45190649
6,200.00	30.19	356.24	5,766.30	1,737.60	-114.09	14,653,394.06	1,793,129.15	40.34652544	-104.45191832
6,296.20	30.19	356.24	5,849.45	1,785.87	-117.26	14,653,442.30	1,793,125.68	40.34665796	-104.45192969
Begin 10°/100' build/turn									
6,300.00	30.21	355.49	5,852.74	1,787.78	-117.40	14,653,444.21	1,793,125.53	40.34666321	-104.45193019
6,400.00	32.30	336.57	5,938.43	1,837.50	-130.04	14,653,493.85	1,793,112.59	40.34679974	-104.45197554
6,500.00	36.81	320.77	6,020.93	1,885.34	-159.68	14,653,541.51	1,793,082.65	40.34693113	-104.45208194
6,600.00	42.98	308.45	6,097.73	1,929.86	-205.44	14,653,585.75	1,793,036.61	40.34705337	-104.45224616
6,700.00	50.18	298.87	6,166.51	1,969.70	-265.92	14,653,625.21	1,792,975.89	40.34716276	-104.45246321
6,800.00	58.01	291.18	6,225.16	2,003.64	-339.28	14,653,658.70	1,792,902.32	40.34725597	-104.45272650
6,900.00	66.23	284.73	6,271.92	2,030.67	-423.29	14,653,685.20	1,792,818.14	40.34733016	-104.45302802
7,000.00	74.69	279.06	6,305.35	2,049.94	-515.41	14,653,703.90	1,792,725.91	40.34738309	-104.45335862
7,100.00	83.28	273.84	6,324.45	2,060.89	-612.83	14,653,714.25	1,792,628.42	40.34741314	-104.45370824
7,177.72	90.00	269.92	6,329.00	2,063.42	-690.32	14,653,716.30	1,792,550.92	40.34742009	-104.45398635
LP Begin 90° lateral									
7,200.00	90.00	269.92	6,329.00	2,063.39	-712.59	14,653,716.13	1,792,528.64	40.34742000	-104.45406629
7,300.00	90.00	269.92	6,329.00	2,063.25	-812.59	14,653,715.37	1,792,428.65	40.34741961	-104.45442519
7,400.00	90.00	269.92	6,329.00	2,063.11	-912.59	14,653,714.61	1,792,328.65	40.34741921	-104.45478408
7,500.00	90.00	269.92	6,329.00	2,062.97	-1,012.59	14,653,713.84	1,792,228.65	40.34741881	-104.45514297
7,600.00	90.00	269.92	6,329.00	2,062.82	-1,112.59	14,653,713.08	1,792,128.66	40.34741841	-104.45550187
7,700.00	90.00	269.92	6,329.00	2,062.68	-1,212.59	14,653,712.32	1,792,028.66	40.34741801	-104.45586076
7,800.00	90.00	269.92	6,329.00	2,062.54	-1,312.59	14,653,711.56	1,791,928.66	40.34741760	-104.45621965
7,900.00	90.00	269.92	6,329.00	2,062.40	-1,412.59	14,653,710.80	1,791,828.67	40.34741720	-104.45657854
8,000.00	90.00	269.92	6,329.00	2,062.26	-1,512.59	14,653,710.04	1,791,728.67	40.34741679	-104.45693744
8,100.00	90.00	269.92	6,329.00	2,062.12	-1,612.59	14,653,709.28	1,791,628.67	40.34741639	-104.45729633
8,200.00	90.00	269.92	6,329.00	2,061.97	-1,712.59	14,653,708.51	1,791,528.68	40.34741598	-104.45765522
8,300.00	90.00	269.92	6,329.00	2,061.83	-1,812.59	14,653,707.75	1,791,428.68	40.34741557	-104.45801412
8,400.00	90.00	269.92	6,329.00	2,061.69	-1,912.59	14,653,706.99	1,791,328.68	40.34741516	-104.45837301
8,500.00	90.00	269.92	6,329.00	2,061.55	-2,012.59	14,653,706.23	1,791,228.69	40.34741475	-104.45873190
8,600.00	90.00	269.92	6,329.00	2,061.41	-2,112.59	14,653,705.47	1,791,128.69	40.34741434	-104.45909079
8,700.00	90.00	269.92	6,329.00	2,061.27	-2,212.59	14,653,704.71	1,791,028.69	40.34741393	-104.45944969
8,800.00	90.00	269.92	6,329.00	2,061.12	-2,312.59	14,653,703.95	1,790,928.69	40.34741351	-104.45980858
8,900.00	90.00	269.92	6,329.00	2,060.98	-2,412.59	14,653,703.18	1,790,828.70	40.34741310	-104.46016747
9,000.00	90.00	269.92	6,329.00	2,060.84	-2,512.59	14,653,702.42	1,790,728.70	40.34741268	-104.46052637
9,100.00	90.00	269.92	6,329.00	2,060.70	-2,612.59	14,653,701.66	1,790,628.70	40.34741226	-104.46088526
9,200.00	90.00	269.92	6,329.00	2,060.56	-2,712.59	14,653,700.90	1,790,528.71	40.34741185	-104.46124415
9,300.00	90.00	269.92	6,329.00	2,060.42	-2,812.59	14,653,700.14	1,790,428.71	40.34741143	-104.46160305
9,400.00	90.00	269.92	6,329.00	2,060.27	-2,912.59	14,653,699.38	1,790,328.71	40.34741101	-104.46196194
9,500.00	90.00	269.92	6,329.00	2,060.13	-3,012.59	14,653,698.62	1,790,228.72	40.34741058	-104.46232083
9,600.00	90.00	269.92	6,329.00	2,059.99	-3,112.59	14,653,697.86	1,790,128.72	40.34741016	-104.46267972
9,700.00	90.00	269.92	6,329.00	2,059.85	-3,212.59	14,653,697.09	1,790,028.72	40.34740974	-104.46303862
9,800.00	90.00	269.92	6,329.00	2,059.71	-3,312.59	14,653,696.33	1,789,928.73	40.34740931	-104.46339751
9,900.00	90.00	269.92	6,329.00	2,059.57	-3,412.59	14,653,695.57	1,789,828.73	40.34740889	-104.46375640
10,000.00	90.00	269.92	6,329.00	2,059.43	-3,512.59	14,653,694.81	1,789,728.73	40.34740846	-104.46411530

<b>Database:</b>	DB_Aug0116_LT_v14	<b>Local Co-ordinate Reference:</b>	Well Silverton 5-01-1L
<b>Company:</b>	Confluence Resources	<b>TVD Reference:</b>	RKB=4628+24 @ 4652.00ft
<b>Project:</b>	Weld County, Colorado	<b>MD Reference:</b>	RKB=4628+24 @ 4652.00ft
<b>Site:</b>	Section 04-T04N-R63W	<b>North Reference:</b>	True
<b>Well:</b>	Silverton 5-01-1L	<b>Survey Calculation Method:</b>	Minimum Curvature
<b>Wellbore:</b>	Original hole		
<b>Design:</b>	plan1		

Planned Survey									
Measured Depth (ft)	Inclination (°)	Azimuth (°)	Vertical Depth (ft)	+N/-S (ft)	+E/-W (ft)	Map Northing (usft)	Map Easting (usft)	Latitude	Longitude
10,100.00	90.00	269.92	6,329.00	2,059.28	-3,612.59	14,653,694.05	1,789,628.73	40.34740803	-104.46447419
10,200.00	90.00	269.92	6,329.00	2,059.14	-3,712.59	14,653,693.29	1,789,528.74	40.34740760	-104.46483308
10,300.00	90.00	269.92	6,329.00	2,059.00	-3,812.59	14,653,692.53	1,789,428.74	40.34740717	-104.46519198
10,400.00	90.00	269.92	6,329.00	2,058.86	-3,912.59	14,653,691.76	1,789,328.74	40.34740674	-104.46555087
10,500.00	90.00	269.92	6,329.00	2,058.72	-4,012.59	14,653,691.00	1,789,228.75	40.34740631	-104.46590976
10,600.00	90.00	269.92	6,329.00	2,058.58	-4,112.59	14,653,690.24	1,789,128.75	40.34740587	-104.46626865
10,700.00	90.00	269.92	6,329.00	2,058.43	-4,212.59	14,653,689.48	1,789,028.75	40.34740544	-104.46662755
10,800.00	90.00	269.92	6,329.00	2,058.29	-4,312.59	14,653,688.72	1,788,928.76	40.34740500	-104.46698644
10,900.00	90.00	269.92	6,329.00	2,058.15	-4,412.59	14,653,687.96	1,788,828.76	40.34740456	-104.46734533
11,000.00	90.00	269.92	6,329.00	2,058.01	-4,512.59	14,653,687.20	1,788,728.76	40.34740412	-104.46770423
11,100.00	90.00	269.92	6,329.00	2,057.87	-4,612.59	14,653,686.44	1,788,628.77	40.34740368	-104.46806312
11,200.00	90.00	269.92	6,329.00	2,057.73	-4,712.59	14,653,685.67	1,788,528.77	40.34740324	-104.46842201
11,300.00	90.00	269.92	6,329.00	2,057.58	-4,812.59	14,653,684.91	1,788,428.77	40.34740280	-104.46878091
11,400.00	90.00	269.92	6,329.00	2,057.44	-4,912.59	14,653,684.15	1,788,328.77	40.34740236	-104.46913980
11,500.00	90.00	269.92	6,329.00	2,057.30	-5,012.59	14,653,683.39	1,788,228.78	40.34740192	-104.46949869
11,600.00	90.00	269.92	6,329.00	2,057.16	-5,112.59	14,653,682.63	1,788,128.78	40.34740147	-104.46985759
11,700.00	90.00	269.92	6,329.00	2,057.02	-5,212.59	14,653,681.87	1,788,028.78	40.34740102	-104.47021648
11,800.00	90.00	269.92	6,329.00	2,056.88	-5,312.59	14,653,681.11	1,787,928.79	40.34740058	-104.47057537
11,900.00	90.00	269.92	6,329.00	2,056.73	-5,412.59	14,653,680.34	1,787,828.79	40.34740013	-104.47093427
11,945.53	90.00	269.92	6,329.00	2,056.67	-5,458.12	14,653,680.00	1,787,783.26	40.34739992	-104.47109768
Begin 2°/100' turn									
11,950.56	90.00	270.02	6,329.00	2,056.67	-5,463.15	14,653,679.96	1,787,778.23	40.34739991	-104.47111573
Begin 90.00° lateral section									
12,000.00	90.00	270.02	6,329.00	2,056.68	-5,512.59	14,653,679.67	1,787,728.79	40.34739993	-104.47129316
12,100.00	90.00	270.02	6,329.00	2,056.72	-5,612.59	14,653,679.09	1,787,628.79	40.34739996	-104.47165205
12,200.00	90.00	270.02	6,329.00	2,056.75	-5,712.59	14,653,678.50	1,787,528.80	40.34739999	-104.47201095
12,300.00	90.00	270.02	6,329.00	2,056.79	-5,812.59	14,653,677.92	1,787,428.80	40.34740002	-104.47236984
12,400.00	90.00	270.02	6,329.00	2,056.82	-5,912.59	14,653,677.33	1,787,328.80	40.34740005	-104.47272873
12,500.00	90.00	270.02	6,329.00	2,056.85	-6,012.59	14,653,676.75	1,787,228.80	40.34740007	-104.47308763
12,600.00	90.00	270.02	6,329.00	2,056.89	-6,112.59	14,653,676.16	1,787,128.80	40.34740010	-104.47344652
12,700.00	90.00	270.02	6,329.00	2,056.92	-6,212.59	14,653,675.57	1,787,028.81	40.34740013	-104.47380541
12,800.00	90.00	270.02	6,329.00	2,056.96	-6,312.59	14,653,674.99	1,786,928.81	40.34740015	-104.47416431
12,900.00	90.00	270.02	6,329.00	2,056.99	-6,412.59	14,653,674.40	1,786,828.81	40.34740017	-104.47452320
13,000.00	90.00	270.02	6,329.00	2,057.02	-6,512.59	14,653,673.82	1,786,728.81	40.34740019	-104.47488210
13,100.00	90.00	270.02	6,329.00	2,057.06	-6,612.59	14,653,673.23	1,786,628.81	40.34740021	-104.47524099
13,200.00	90.00	270.02	6,329.00	2,057.09	-6,712.59	14,653,672.64	1,786,528.82	40.34740023	-104.47559988
13,300.00	90.00	270.02	6,329.00	2,057.13	-6,812.59	14,653,672.06	1,786,428.82	40.34740025	-104.47595878
13,400.00	90.00	270.02	6,329.00	2,057.16	-6,912.59	14,653,671.47	1,786,328.82	40.34740027	-104.47631767
13,500.00	90.00	270.02	6,329.00	2,057.19	-7,012.59	14,653,670.89	1,786,228.82	40.34740028	-104.47667656
13,600.00	90.00	270.02	6,329.00	2,057.23	-7,112.59	14,653,670.30	1,786,128.82	40.34740030	-104.47703546
13,700.00	90.00	270.02	6,329.00	2,057.26	-7,212.59	14,653,669.72	1,786,028.83	40.34740031	-104.47739435
13,800.00	90.00	270.02	6,329.00	2,057.30	-7,312.59	14,653,669.13	1,785,928.83	40.34740032	-104.47775325
13,900.00	90.00	270.02	6,329.00	2,057.33	-7,412.59	14,653,668.54	1,785,828.83	40.34740034	-104.47811214
14,000.00	90.00	270.02	6,329.00	2,057.36	-7,512.59	14,653,667.96	1,785,728.83	40.34740035	-104.47847103
14,100.00	90.00	270.02	6,329.00	2,057.40	-7,612.59	14,653,667.37	1,785,628.83	40.34740035	-104.47882993
14,200.00	90.00	270.02	6,329.00	2,057.43	-7,712.59	14,653,666.79	1,785,528.83	40.34740036	-104.47918882
14,300.00	90.00	270.02	6,329.00	2,057.47	-7,812.59	14,653,666.20	1,785,428.84	40.34740037	-104.47954772
14,400.00	90.00	270.02	6,329.00	2,057.50	-7,912.59	14,653,665.62	1,785,328.84	40.34740038	-104.47990661
14,500.00	90.00	270.02	6,329.00	2,057.53	-8,012.59	14,653,665.03	1,785,228.84	40.34740038	-104.48026550
14,600.00	90.00	270.02	6,329.00	2,057.57	-8,112.59	14,653,664.44	1,785,128.84	40.34740038	-104.48062440
14,700.00	90.00	270.02	6,329.00	2,057.60	-8,212.59	14,653,663.86	1,785,028.84	40.34740039	-104.48098329
14,800.00	90.00	270.02	6,329.00	2,057.63	-8,312.59	14,653,663.27	1,784,928.85	40.34740039	-104.48134219
14,900.00	90.00	270.02	6,329.00	2,057.67	-8,412.59	14,653,662.69	1,784,828.85	40.34740039	-104.48170108
15,000.00	90.00	270.02	6,329.00	2,057.70	-8,512.59	14,653,662.10	1,784,728.85	40.34740039	-104.48205997

<b>Database:</b>	DB_Aug0116_LT_v14	<b>Local Co-ordinate Reference:</b>	Well Silverton 5-01-1L
<b>Company:</b>	Confluence Resources	<b>TVD Reference:</b>	RKB=4628+24 @ 4652.00ft
<b>Project:</b>	Weld County, Colorado	<b>MD Reference:</b>	RKB=4628+24 @ 4652.00ft
<b>Site:</b>	Section 04-T04N-R63W	<b>North Reference:</b>	True
<b>Well:</b>	Silverton 5-01-1L	<b>Survey Calculation Method:</b>	Minimum Curvature
<b>Wellbore:</b>	Original hole		
<b>Design:</b>	plan1		

Planned Survey									
Measured Depth (ft)	Inclination (°)	Azimuth (°)	Vertical Depth (ft)	+N/-S (ft)	+E/-W (ft)	Map Northing (usft)	Map Easting (usft)	Latitude	Longitude
15,100.00	90.00	270.02	6,329.00	2,057.74	-8,612.59	14,653,661.51	1,784,628.85	40.34740038	-104.48241887
15,200.00	90.00	270.02	6,329.00	2,057.77	-8,712.59	14,653,660.93	1,784,528.85	40.34740038	-104.48277776
15,300.00	90.00	270.02	6,329.00	2,057.80	-8,812.59	14,653,660.34	1,784,428.86	40.34740038	-104.48313666
15,400.00	90.00	270.02	6,329.00	2,057.84	-8,912.59	14,653,659.76	1,784,328.86	40.34740037	-104.48349555
15,500.00	90.00	270.02	6,329.00	2,057.87	-9,012.59	14,653,659.17	1,784,228.86	40.34740037	-104.48385444
15,600.00	90.00	270.02	6,329.00	2,057.91	-9,112.59	14,653,658.59	1,784,128.86	40.34740036	-104.48421334
15,700.00	90.00	270.02	6,329.00	2,057.94	-9,212.59	14,653,658.00	1,784,028.86	40.34740035	-104.48457222
15,800.00	90.00	270.02	6,329.00	2,057.97	-9,312.59	14,653,657.41	1,783,928.87	40.34740034	-104.48493112
15,900.00	90.00	270.02	6,329.00	2,058.01	-9,412.59	14,653,656.83	1,783,828.87	40.34740033	-104.48529001
16,000.00	90.00	270.02	6,329.00	2,058.04	-9,512.59	14,653,656.24	1,783,728.87	40.34740032	-104.48564891
16,100.00	90.00	270.02	6,329.00	2,058.08	-9,612.59	14,653,655.66	1,783,628.87	40.34740030	-104.48600780
16,200.00	90.00	270.02	6,329.00	2,058.11	-9,712.59	14,653,655.07	1,783,528.87	40.34740029	-104.48636669
16,300.00	90.00	270.02	6,329.00	2,058.14	-9,812.59	14,653,654.49	1,783,428.88	40.34740027	-104.48672559
16,400.00	90.00	270.02	6,329.00	2,058.18	-9,912.59	14,653,653.90	1,783,328.88	40.34740026	-104.48708448
16,500.00	90.00	270.02	6,329.00	2,058.21	-10,012.59	14,653,653.31	1,783,228.88	40.34740024	-104.48744338
16,600.00	90.00	270.02	6,329.00	2,058.25	-10,112.59	14,653,652.73	1,783,128.88	40.34740022	-104.48780227
16,605.17	90.00	270.02	6,329.00	2,058.25	-10,117.76	14,653,652.70	1,783,123.71	40.34740022	-104.48782083
PBHL/TD 16605.17 MD 6329.00 TVD									

Design Targets										
Target Name - hit/miss target - Shape	Dip Angle (°)	Dip Dir. (°)	TVD (ft)	+N/-S (ft)	+E/-W (ft)	Northing (usft)	Easting (usft)	Latitude	Longitude	
Silverton 5-01-1L SL 25' - plan hits target center - Point	0.00	0.00	24.00	0.00	0.00	14,651,657.20	1,793,254.01	40.34175406	-104.45150885	
Silverton 5-01-1L Int 47' - plan hits target center - Point	0.00	0.00	6,329.00	2,056.67	-5,458.12	14,653,680.00	1,787,783.26	40.34739992	-104.47109768	
Silverton 5-01-1L LP 47' - plan hits target center - Point	0.00	0.00	6,329.00	2,063.42	-690.32	14,653,716.30	1,792,550.92	40.34742009	-104.45398635	
Silverton 5-01-1L BHL 4' - plan hits target center - Point	0.00	0.00	6,329.00	2,058.25	-10,117.76	14,653,652.70	1,783,123.71	40.34740022	-104.48782083	

Plan Annotations					
Measured Depth (ft)	Vertical Depth (ft)	Local Coordinates			
		+N/-S (ft)	+E/-W (ft)	Comment	
2,000.00	2,000.00	0.00	0.00	KOP Begin 2°/100' build	
3,509.26	3,440.41	387.62	-25.45	Begin 30.19° tangent section	
6,296.20	5,849.45	1,785.87	-117.26	Begin 10°/100' build/turn	
7,177.72	6,329.00	2,063.42	-690.32	LP Begin 90° lateral	
11,945.53	6,329.00	2,056.67	-5,458.12	Begin 2°/100' turn	
11,950.56	6,329.00	2,056.67	-5,463.15	Begin 90.00° lateral section	
16,605.17	6,329.00	2,058.25	-10,117.76	PBHL/TD 16605.17 MD 6329.00 TVD	



<b>Database:</b>	DB_Aug0116_LT_v14	<b>Local Co-ordinate Reference:</b>	Well Silverton 5-01-1L
<b>Company:</b>	Confluence Resources	<b>TVD Reference:</b>	RKB=4628+24 @ 4652.00ft
<b>Project:</b>	Weld County, Colorado	<b>MD Reference:</b>	RKB=4628+24 @ 4652.00ft
<b>Site:</b>	Section 04-T04N-R63W	<b>North Reference:</b>	True
<b>Well:</b>	Silverton 5-01-1L	<b>Survey Calculation Method:</b>	Minimum Curvature
<b>Wellbore:</b>	Original hole		
<b>Design:</b>	plan1		

<b>Project</b>	Weld County, Colorado		
<b>Map System:</b>	Universal Transverse Mercator (US Survey Feet)	<b>System Datum:</b>	Mean Sea Level
<b>Geo Datum:</b>	NAD83 Colorado - HARN		
<b>Map Zone:</b>	Zone 13N (108 W to 102 W)		

Site		Section 04-T04N-R63W			
Site Position:		Northing:	14,650,073.90 usft	Latitude:	40.33740565
From:	Map	Easting:	1,793,302.13 usft	Longitude:	-104.45137138
Position Uncertainty:	0.00 ft	Slot Radius:	13-3/16 "	Grid Convergence:	0.36 °

Well	Silverton 5-01-1L, Surf loc: 2534 FNL 255 FWL Section 04-T04N-R63W					
Well Position	+N/-S	1,583.57 ft	Northing:	14,651,657.20 usft	Latitude:	40.34175406
	+E/-W	-38.31 ft	Easting:	1,793,254.01 usft	Longitude:	-104.45150885
Position Uncertainty		0.00 ft	Wellhead Elevation:		Ground Level:	4,628.00 ft

<b>Wellbore</b>	Original hole				
<b>Magnetics</b>	<b>Model Name</b>	<b>Sample Date</b>	<b>Declination (°)</b>	<b>Dip Angle (°)</b>	<b>Field Strength (nT)</b>
	HDGM	5/29/2018	8.08	66.90	52,227.60000000

<b>Design</b>	plan1			
<b>Audit Notes:</b>				
<b>Version:</b>	<b>Phase:</b>	PLAN	<b>Tie On Depth:</b>	0.00
<b>Vertical Section:</b>	<b>Depth From (TVD) (ft)</b>	<b>+N/-S (ft)</b>	<b>+E/-W (ft)</b>	<b>Direction (°)</b>
	0.00	0.00	0.00	281.50

<b>Plan Survey Tool Program</b>	<b>Date</b>	5/29/2018		
<b>Depth From (ft)</b>	<b>Depth To (ft)</b>	<b>Survey (Wellbore)</b>	<b>Tool Name</b>	<b>Remarks</b>
1	0.00	16,605.17	plan1 (Original hole)	

<b>Plan Sections</b>										
<b>Measured Depth (ft)</b>	<b>Inclination (°)</b>	<b>Azimuth (°)</b>	<b>Vertical Depth (ft)</b>	<b>+N/-S (ft)</b>	<b>+E/-W (ft)</b>	<b>Dogleg Rate (°/100ft)</b>	<b>Build Rate (°/100ft)</b>	<b>Turn Rate (°/100ft)</b>	<b>TFO (°)</b>	<b>Target</b>
0.00	0.00	0.00	0.00	0.00	0.00	0.00	0.00	0.00	0.00	
2,000.00	0.00	0.00	2,000.00	0.00	0.00	0.00	0.00	0.00	0.00	
3,509.26	30.19	356.24	3,440.41	387.62	-25.45	2.00	2.00	0.00	356.24	
6,296.20	30.19	356.24	5,849.45	1,785.87	-117.26	0.00	0.00	0.00	0.00	
7,177.72	90.00	269.92	6,329.00	2,063.42	-690.32	10.00	6.79	-9.79	-86.82	Silverton 5-01-1L LP 4
11,945.53	90.00	269.92	6,329.00	2,056.67	-5,458.12	0.00	0.00	0.00	0.00	Silverton 5-01-1L Int 4
11,950.56	90.00	270.02	6,329.00	2,056.67	-5,463.15	2.00	0.00	2.00	90.00	
16,605.17	90.00	270.02	6,329.00	2,058.25	-10,117.76	0.00	0.00	0.00	0.00	Silverton 5-01-1L BHL

<b>Database:</b>	DB_Aug0116_LT_v14	<b>Local Co-ordinate Reference:</b>	Well Silverton 5-01-1L
<b>Company:</b>	Confluence Resources	<b>TVD Reference:</b>	RKB=4628+24 @ 4652.00ft
<b>Project:</b>	Weld County, Colorado	<b>MD Reference:</b>	RKB=4628+24 @ 4652.00ft
<b>Site:</b>	Section 04-T04N-R63W	<b>North Reference:</b>	True
<b>Well:</b>	Silverton 5-01-1L	<b>Survey Calculation Method:</b>	Minimum Curvature
<b>Wellbore:</b>	Original hole		
<b>Design:</b>	plan1		

Planned Survey									
Measured Depth (ft)	Inclination (°)	Azimuth (°)	Vertical Depth (ft)	+N/-S (ft)	+E/-W (ft)	Vertical Section (ft)	Dogleg Rate (°/100ft)	Build Rate (°/100ft)	Turn Rate (°/100ft)
0.00	0.00	0.00	0.00	0.00	0.00	0.00	0.00	0.00	0.00
100.00	0.00	0.00	100.00	0.00	0.00	0.00	0.00	0.00	0.00
200.00	0.00	0.00	200.00	0.00	0.00	0.00	0.00	0.00	0.00
300.00	0.00	0.00	300.00	0.00	0.00	0.00	0.00	0.00	0.00
400.00	0.00	0.00	400.00	0.00	0.00	0.00	0.00	0.00	0.00
500.00	0.00	0.00	500.00	0.00	0.00	0.00	0.00	0.00	0.00
600.00	0.00	0.00	600.00	0.00	0.00	0.00	0.00	0.00	0.00
700.00	0.00	0.00	700.00	0.00	0.00	0.00	0.00	0.00	0.00
800.00	0.00	0.00	800.00	0.00	0.00	0.00	0.00	0.00	0.00
900.00	0.00	0.00	900.00	0.00	0.00	0.00	0.00	0.00	0.00
1,000.00	0.00	0.00	1,000.00	0.00	0.00	0.00	0.00	0.00	0.00
1,100.00	0.00	0.00	1,100.00	0.00	0.00	0.00	0.00	0.00	0.00
1,200.00	0.00	0.00	1,200.00	0.00	0.00	0.00	0.00	0.00	0.00
1,300.00	0.00	0.00	1,300.00	0.00	0.00	0.00	0.00	0.00	0.00
1,400.00	0.00	0.00	1,400.00	0.00	0.00	0.00	0.00	0.00	0.00
1,500.00	0.00	0.00	1,500.00	0.00	0.00	0.00	0.00	0.00	0.00
1,600.00	0.00	0.00	1,600.00	0.00	0.00	0.00	0.00	0.00	0.00
1,700.00	0.00	0.00	1,700.00	0.00	0.00	0.00	0.00	0.00	0.00
1,800.00	0.00	0.00	1,800.00	0.00	0.00	0.00	0.00	0.00	0.00
1,900.00	0.00	0.00	1,900.00	0.00	0.00	0.00	0.00	0.00	0.00
2,000.00	0.00	0.00	2,000.00	0.00	0.00	0.00	0.00	0.00	0.00
<b>KOP Begin 2°/100' build</b>									
2,100.00	2.00	356.24	2,099.98	1.74	-0.11	0.46	2.00	2.00	0.00
2,200.00	4.00	356.24	2,199.84	6.96	-0.46	1.84	2.00	2.00	0.00
2,300.00	6.00	356.24	2,299.45	15.66	-1.03	4.13	2.00	2.00	0.00
2,400.00	8.00	356.24	2,398.70	27.82	-1.83	7.34	2.00	2.00	0.00
2,500.00	10.00	356.24	2,497.47	43.43	-2.85	11.45	2.00	2.00	0.00
2,600.00	12.00	356.24	2,595.62	62.47	-4.10	16.47	2.00	2.00	0.00
2,700.00	14.00	356.24	2,693.06	84.91	-5.58	22.39	2.00	2.00	0.00
2,800.00	16.00	356.24	2,789.64	110.74	-7.27	29.20	2.00	2.00	0.00
2,900.00	18.00	356.24	2,885.27	139.91	-9.19	36.89	2.00	2.00	0.00
3,000.00	20.00	356.24	2,979.82	172.40	-11.32	45.46	2.00	2.00	0.00
3,100.00	22.00	356.24	3,073.17	208.15	-13.67	54.89	2.00	2.00	0.00
3,200.00	24.00	356.24	3,165.21	247.14	-16.23	65.17	2.00	2.00	0.00
3,300.00	26.00	356.24	3,255.84	289.31	-19.00	76.29	2.00	2.00	0.00
3,400.00	28.00	356.24	3,344.94	334.61	-21.97	88.23	2.00	2.00	0.00
3,500.00	30.00	356.24	3,432.39	382.98	-25.15	100.99	2.00	2.00	0.00
3,509.26	30.19	356.24	3,440.41	387.62	-25.45	102.21	2.00	2.00	0.00
<b>Begin 30.19° tangent section</b>									
3,600.00	30.19	356.24	3,518.84	433.14	-28.44	114.22	0.00	0.00	0.00
3,700.00	30.19	356.24	3,605.28	483.31	-31.74	127.45	0.00	0.00	0.00
3,800.00	30.19	356.24	3,691.72	533.49	-35.03	140.67	0.00	0.00	0.00
3,900.00	30.19	356.24	3,778.16	583.66	-38.32	153.90	0.00	0.00	0.00
4,000.00	30.19	356.24	3,864.60	633.83	-41.62	167.13	0.00	0.00	0.00
4,100.00	30.19	356.24	3,951.05	684.00	-44.91	180.36	0.00	0.00	0.00
4,200.00	30.19	356.24	4,037.49	734.17	-48.21	193.59	0.00	0.00	0.00
4,300.00	30.19	356.24	4,123.93	784.34	-51.50	206.82	0.00	0.00	0.00
4,400.00	30.19	356.24	4,210.37	834.52	-54.80	220.05	0.00	0.00	0.00
4,500.00	30.19	356.24	4,296.81	884.69	-58.09	233.28	0.00	0.00	0.00
4,600.00	30.19	356.24	4,383.25	934.86	-61.38	246.51	0.00	0.00	0.00
4,700.00	30.19	356.24	4,469.69	985.03	-64.68	259.74	0.00	0.00	0.00
4,800.00	30.19	356.24	4,556.13	1,035.20	-67.97	272.97	0.00	0.00	0.00
4,900.00	30.19	356.24	4,642.57	1,085.37	-71.27	286.20	0.00	0.00	0.00



<b>Database:</b>	DB_Aug0116_LT_v14	<b>Local Co-ordinate Reference:</b>	Well Silverton 5-01-1L
<b>Company:</b>	Confluence Resources	<b>TVD Reference:</b>	RKB=4628+24 @ 4652.00ft
<b>Project:</b>	Weld County, Colorado	<b>MD Reference:</b>	RKB=4628+24 @ 4652.00ft
<b>Site:</b>	Section 04-T04N-R63W	<b>North Reference:</b>	True
<b>Well:</b>	Silverton 5-01-1L	<b>Survey Calculation Method:</b>	Minimum Curvature
<b>Wellbore:</b>	Original hole		
<b>Design:</b>	plan1		

Planned Survey									
Measured Depth (ft)	Inclination (°)	Azimuth (°)	Vertical Depth (ft)	+N/-S (ft)	+E/-W (ft)	Vertical Section (ft)	Dogleg Rate (°/100ft)	Build Rate (°/100ft)	Turn Rate (°/100ft)
5,000.00	30.19	356.24	4,729.01	1,135.55	-74.56	299.43	0.00	0.00	0.00
5,100.00	30.19	356.24	4,815.45	1,185.72	-77.86	312.66	0.00	0.00	0.00
5,200.00	30.19	356.24	4,901.89	1,235.89	-81.15	325.89	0.00	0.00	0.00
5,300.00	30.19	356.24	4,988.33	1,286.06	-84.44	339.12	0.00	0.00	0.00
5,400.00	30.19	356.24	5,074.77	1,336.23	-87.74	352.35	0.00	0.00	0.00
5,500.00	30.19	356.24	5,161.21	1,386.40	-91.03	365.58	0.00	0.00	0.00
5,600.00	30.19	356.24	5,247.65	1,436.57	-94.33	378.81	0.00	0.00	0.00
5,700.00	30.19	356.24	5,334.09	1,486.75	-97.62	392.04	0.00	0.00	0.00
5,800.00	30.19	356.24	5,420.53	1,536.92	-100.92	405.27	0.00	0.00	0.00
5,900.00	30.19	356.24	5,506.97	1,587.09	-104.21	418.50	0.00	0.00	0.00
6,000.00	30.19	356.24	5,593.41	1,637.26	-107.51	431.73	0.00	0.00	0.00
6,100.00	30.19	356.24	5,679.86	1,687.43	-110.80	444.96	0.00	0.00	0.00
6,200.00	30.19	356.24	5,766.30	1,737.60	-114.09	458.19	0.00	0.00	0.00
6,296.20	30.19	356.24	5,849.45	1,785.87	-117.26	470.92	0.00	0.00	0.00
Begin 10°/100' build/turn									
6,300.00	30.21	355.49	5,852.74	1,787.78	-117.40	471.43	10.00	0.61	-19.84
6,400.00	32.30	336.57	5,938.43	1,837.50	-130.04	493.72	10.00	2.09	-18.92
6,500.00	36.81	320.77	6,020.93	1,885.34	-159.68	532.31	10.00	4.51	-15.80
6,600.00	42.98	308.45	6,097.73	1,929.86	-205.44	586.03	10.00	6.16	-12.32
6,700.00	50.18	298.87	6,166.51	1,969.70	-265.92	653.23	10.00	7.20	-9.58
6,800.00	58.01	291.18	6,225.16	2,003.64	-339.28	731.89	10.00	7.83	-7.69
6,900.00	66.23	284.73	6,271.92	2,030.67	-423.29	819.60	10.00	8.22	-6.45
7,000.00	74.69	279.06	6,305.35	2,049.94	-515.41	913.71	10.00	8.46	-5.67
7,100.00	83.28	273.84	6,324.45	2,060.89	-612.83	1,011.36	10.00	8.59	-5.22
7,177.72	90.00	269.92	6,329.00	2,063.42	-690.32	1,087.80	10.00	8.64	-5.04
LP Begin 90° lateral									
7,200.00	90.00	269.92	6,329.00	2,063.39	-712.59	1,109.62	0.00	0.00	0.00
7,300.00	90.00	269.92	6,329.00	2,063.25	-812.59	1,207.58	0.00	0.00	0.00
7,400.00	90.00	269.92	6,329.00	2,063.11	-912.59	1,305.55	0.00	0.00	0.00
7,500.00	90.00	269.92	6,329.00	2,062.97	-1,012.59	1,403.51	0.00	0.00	0.00
7,600.00	90.00	269.92	6,329.00	2,062.82	-1,112.59	1,501.48	0.00	0.00	0.00
7,700.00	90.00	269.92	6,329.00	2,062.68	-1,212.59	1,599.44	0.00	0.00	0.00
7,800.00	90.00	269.92	6,329.00	2,062.54	-1,312.59	1,697.41	0.00	0.00	0.00
7,900.00	90.00	269.92	6,329.00	2,062.40	-1,412.59	1,795.37	0.00	0.00	0.00
8,000.00	90.00	269.92	6,329.00	2,062.26	-1,512.59	1,893.34	0.00	0.00	0.00
8,100.00	90.00	269.92	6,329.00	2,062.12	-1,612.59	1,991.30	0.00	0.00	0.00
8,200.00	90.00	269.92	6,329.00	2,061.97	-1,712.59	2,089.27	0.00	0.00	0.00
8,300.00	90.00	269.92	6,329.00	2,061.83	-1,812.59	2,187.23	0.00	0.00	0.00
8,400.00	90.00	269.92	6,329.00	2,061.69	-1,912.59	2,285.19	0.00	0.00	0.00
8,500.00	90.00	269.92	6,329.00	2,061.55	-2,012.59	2,383.16	0.00	0.00	0.00
8,600.00	90.00	269.92	6,329.00	2,061.41	-2,112.59	2,481.12	0.00	0.00	0.00
8,700.00	90.00	269.92	6,329.00	2,061.27	-2,212.59	2,579.09	0.00	0.00	0.00
8,800.00	90.00	269.92	6,329.00	2,061.12	-2,312.59	2,677.05	0.00	0.00	0.00
8,900.00	90.00	269.92	6,329.00	2,060.98	-2,412.59	2,775.02	0.00	0.00	0.00
9,000.00	90.00	269.92	6,329.00	2,060.84	-2,512.59	2,872.98	0.00	0.00	0.00
9,100.00	90.00	269.92	6,329.00	2,060.70	-2,612.59	2,970.95	0.00	0.00	0.00
9,200.00	90.00	269.92	6,329.00	2,060.56	-2,712.59	3,068.91	0.00	0.00	0.00
9,300.00	90.00	269.92	6,329.00	2,060.42	-2,812.59	3,166.88	0.00	0.00	0.00
9,400.00	90.00	269.92	6,329.00	2,060.27	-2,912.59	3,264.84	0.00	0.00	0.00
9,500.00	90.00	269.92	6,329.00	2,060.13	-3,012.59	3,362.80	0.00	0.00	0.00
9,600.00	90.00	269.92	6,329.00	2,059.99	-3,112.59	3,460.77	0.00	0.00	0.00
9,700.00	90.00	269.92	6,329.00	2,059.85	-3,212.59	3,558.73	0.00	0.00	0.00
9,800.00	90.00	269.92	6,329.00	2,059.71	-3,312.59	3,656.70	0.00	0.00	0.00
9,900.00	90.00	269.92	6,329.00	2,059.57	-3,412.59	3,754.66	0.00	0.00	0.00

<b>Database:</b>	DB_Aug0116_LT_v14	<b>Local Co-ordinate Reference:</b>	Well Silverton 5-01-1L
<b>Company:</b>	Confluence Resources	<b>TVD Reference:</b>	RKB=4628+24 @ 4652.00ft
<b>Project:</b>	Weld County, Colorado	<b>MD Reference:</b>	RKB=4628+24 @ 4652.00ft
<b>Site:</b>	Section 04-T04N-R63W	<b>North Reference:</b>	True
<b>Well:</b>	Silverton 5-01-1L	<b>Survey Calculation Method:</b>	Minimum Curvature
<b>Wellbore:</b>	Original hole		
<b>Design:</b>	plan1		

Planned Survey									
Measured Depth (ft)	Inclination (°)	Azimuth (°)	Vertical Depth (ft)	+N/-S (ft)	+E/-W (ft)	Vertical Section (ft)	Dogleg Rate (°/100ft)	Build Rate (°/100ft)	Turn Rate (°/100ft)
10,000.00	90.00	269.92	6,329.00	2,059.43	-3,512.59	3,852.63	0.00	0.00	0.00
10,100.00	90.00	269.92	6,329.00	2,059.28	-3,612.59	3,950.59	0.00	0.00	0.00
10,200.00	90.00	269.92	6,329.00	2,059.14	-3,712.59	4,048.56	0.00	0.00	0.00
10,300.00	90.00	269.92	6,329.00	2,059.00	-3,812.59	4,146.52	0.00	0.00	0.00
10,400.00	90.00	269.92	6,329.00	2,058.86	-3,912.59	4,244.49	0.00	0.00	0.00
10,500.00	90.00	269.92	6,329.00	2,058.72	-4,012.59	4,342.45	0.00	0.00	0.00
10,600.00	90.00	269.92	6,329.00	2,058.58	-4,112.59	4,440.42	0.00	0.00	0.00
10,700.00	90.00	269.92	6,329.00	2,058.43	-4,212.59	4,538.38	0.00	0.00	0.00
10,800.00	90.00	269.92	6,329.00	2,058.29	-4,312.59	4,636.34	0.00	0.00	0.00
10,900.00	90.00	269.92	6,329.00	2,058.15	-4,412.59	4,734.31	0.00	0.00	0.00
11,000.00	90.00	269.92	6,329.00	2,058.01	-4,512.59	4,832.27	0.00	0.00	0.00
11,100.00	90.00	269.92	6,329.00	2,057.87	-4,612.59	4,930.24	0.00	0.00	0.00
11,200.00	90.00	269.92	6,329.00	2,057.73	-4,712.59	5,028.20	0.00	0.00	0.00
11,300.00	90.00	269.92	6,329.00	2,057.58	-4,812.59	5,126.17	0.00	0.00	0.00
11,400.00	90.00	269.92	6,329.00	2,057.44	-4,912.59	5,224.13	0.00	0.00	0.00
11,500.00	90.00	269.92	6,329.00	2,057.30	-5,012.59	5,322.10	0.00	0.00	0.00
11,600.00	90.00	269.92	6,329.00	2,057.16	-5,112.59	5,420.06	0.00	0.00	0.00
11,700.00	90.00	269.92	6,329.00	2,057.02	-5,212.59	5,518.03	0.00	0.00	0.00
11,800.00	90.00	269.92	6,329.00	2,056.88	-5,312.59	5,615.99	0.00	0.00	0.00
11,900.00	90.00	269.92	6,329.00	2,056.73	-5,412.59	5,713.95	0.00	0.00	0.00
11,945.53	90.00	269.92	6,329.00	2,056.67	-5,458.12	5,758.56	0.00	0.00	0.00
<b>Begin 2°/100' turn</b>									
11,950.56	90.00	270.02	6,329.00	2,056.67	-5,463.15	5,763.49	2.00	0.00	2.00
<b>Begin 90.00° lateral section</b>									
12,000.00	90.00	270.02	6,329.00	2,056.68	-5,512.59	5,811.94	0.00	0.00	0.00
12,100.00	90.00	270.02	6,329.00	2,056.72	-5,612.59	5,909.94	0.00	0.00	0.00
12,200.00	90.00	270.02	6,329.00	2,056.75	-5,712.59	6,007.94	0.00	0.00	0.00
12,300.00	90.00	270.02	6,329.00	2,056.79	-5,812.59	6,105.94	0.00	0.00	0.00
12,400.00	90.00	270.02	6,329.00	2,056.82	-5,912.59	6,203.94	0.00	0.00	0.00
12,500.00	90.00	270.02	6,329.00	2,056.85	-6,012.59	6,301.94	0.00	0.00	0.00
12,600.00	90.00	270.02	6,329.00	2,056.89	-6,112.59	6,399.94	0.00	0.00	0.00
12,700.00	90.00	270.02	6,329.00	2,056.92	-6,212.59	6,497.94	0.00	0.00	0.00
12,800.00	90.00	270.02	6,329.00	2,056.96	-6,312.59	6,595.94	0.00	0.00	0.00
12,900.00	90.00	270.02	6,329.00	2,056.99	-6,412.59	6,693.93	0.00	0.00	0.00
13,000.00	90.00	270.02	6,329.00	2,057.02	-6,512.59	6,791.93	0.00	0.00	0.00
13,100.00	90.00	270.02	6,329.00	2,057.06	-6,612.59	6,889.93	0.00	0.00	0.00
13,200.00	90.00	270.02	6,329.00	2,057.09	-6,712.59	6,987.93	0.00	0.00	0.00
13,300.00	90.00	270.02	6,329.00	2,057.13	-6,812.59	7,085.93	0.00	0.00	0.00
13,400.00	90.00	270.02	6,329.00	2,057.16	-6,912.59	7,183.93	0.00	0.00	0.00
13,500.00	90.00	270.02	6,329.00	2,057.19	-7,012.59	7,281.93	0.00	0.00	0.00
13,600.00	90.00	270.02	6,329.00	2,057.23	-7,112.59	7,379.93	0.00	0.00	0.00
13,700.00	90.00	270.02	6,329.00	2,057.26	-7,212.59	7,477.93	0.00	0.00	0.00
13,800.00	90.00	270.02	6,329.00	2,057.30	-7,312.59	7,575.93	0.00	0.00	0.00
13,900.00	90.00	270.02	6,329.00	2,057.33	-7,412.59	7,673.93	0.00	0.00	0.00
14,000.00	90.00	270.02	6,329.00	2,057.36	-7,512.59	7,771.93	0.00	0.00	0.00
14,100.00	90.00	270.02	6,329.00	2,057.40	-7,612.59	7,869.93	0.00	0.00	0.00
14,200.00	90.00	270.02	6,329.00	2,057.43	-7,712.59	7,967.93	0.00	0.00	0.00
14,300.00	90.00	270.02	6,329.00	2,057.47	-7,812.59	8,065.93	0.00	0.00	0.00
14,400.00	90.00	270.02	6,329.00	2,057.50	-7,912.59	8,163.93	0.00	0.00	0.00
14,500.00	90.00	270.02	6,329.00	2,057.53	-8,012.59	8,261.93	0.00	0.00	0.00
14,600.00	90.00	270.02	6,329.00	2,057.57	-8,112.59	8,359.93	0.00	0.00	0.00
14,700.00	90.00	270.02	6,329.00	2,057.60	-8,212.59	8,457.93	0.00	0.00	0.00
14,800.00	90.00	270.02	6,329.00	2,057.63	-8,312.59	8,555.93	0.00	0.00	0.00
14,900.00	90.00	270.02	6,329.00	2,057.67	-8,412.59	8,653.93	0.00	0.00	0.00

<b>Database:</b>	DB_Aug0116_LT_v14	<b>Local Co-ordinate Reference:</b>	Well Silverton 5-01-1L
<b>Company:</b>	Confluence Resources	<b>TVD Reference:</b>	RKB=4628+24 @ 4652.00ft
<b>Project:</b>	Weld County, Colorado	<b>MD Reference:</b>	RKB=4628+24 @ 4652.00ft
<b>Site:</b>	Section 04-T04N-R63W	<b>North Reference:</b>	True
<b>Well:</b>	Silverton 5-01-1L	<b>Survey Calculation Method:</b>	Minimum Curvature
<b>Wellbore:</b>	Original hole		
<b>Design:</b>	plan1		

Planned Survey									
Measured Depth (ft)	Inclination (°)	Azimuth (°)	Vertical Depth (ft)	+N/-S (ft)	+E/-W (ft)	Vertical Section (ft)	Dogleg Rate (°/100ft)	Build Rate (°/100ft)	Turn Rate (°/100ft)
15,000.00	90.00	270.02	6,329.00	2,057.70	-8,512.59	8,751.93	0.00	0.00	0.00
15,100.00	90.00	270.02	6,329.00	2,057.74	-8,612.59	8,849.93	0.00	0.00	0.00
15,200.00	90.00	270.02	6,329.00	2,057.77	-8,712.59	8,947.93	0.00	0.00	0.00
15,300.00	90.00	270.02	6,329.00	2,057.80	-8,812.59	9,045.93	0.00	0.00	0.00
15,400.00	90.00	270.02	6,329.00	2,057.84	-8,912.59	9,143.93	0.00	0.00	0.00
15,500.00	90.00	270.02	6,329.00	2,057.87	-9,012.59	9,241.93	0.00	0.00	0.00
15,600.00	90.00	270.02	6,329.00	2,057.91	-9,112.59	9,339.93	0.00	0.00	0.00
15,700.00	90.00	270.02	6,329.00	2,057.94	-9,212.59	9,437.93	0.00	0.00	0.00
15,800.00	90.00	270.02	6,329.00	2,057.97	-9,312.59	9,535.93	0.00	0.00	0.00
15,900.00	90.00	270.02	6,329.00	2,058.01	-9,412.59	9,633.93	0.00	0.00	0.00
16,000.00	90.00	270.02	6,329.00	2,058.04	-9,512.59	9,731.92	0.00	0.00	0.00
16,100.00	90.00	270.02	6,329.00	2,058.08	-9,612.59	9,829.92	0.00	0.00	0.00
16,200.00	90.00	270.02	6,329.00	2,058.11	-9,712.59	9,927.92	0.00	0.00	0.00
16,300.00	90.00	270.02	6,329.00	2,058.14	-9,812.59	10,025.92	0.00	0.00	0.00
16,400.00	90.00	270.02	6,329.00	2,058.18	-9,912.59	10,123.92	0.00	0.00	0.00
16,500.00	90.00	270.02	6,329.00	2,058.21	-10,012.59	10,221.92	0.00	0.00	0.00
16,600.00	90.00	270.02	6,329.00	2,058.25	-10,112.59	10,319.92	0.00	0.00	0.00
16,605.17	90.00	270.02	6,329.00	2,058.25	-10,117.76	10,324.99	0.00	0.00	0.00
PBHL/TD 16605.17 MD 6329.00 TVD									

Design Targets									
Target Name - hit/miss target - Shape	Dip Angle (°)	Dip Dir. (°)	TVD (ft)	+N/-S (ft)	+E/-W (ft)	Northing (usft)	Easting (usft)	Latitude	Longitude
Silverton 5-01-1L SL 253 - plan hits target center - Point	0.00	0.00	24.00	0.00	0.00	14,651,657.20	1,793,254.01	40.34175406	-104.45150885
Silverton 5-01-1L Int 47C - plan hits target center - Point	0.00	0.00	6,329.00	2,056.67	-5,458.12	14,653,680.00	1,787,783.26	40.34739992	-104.47109768
Silverton 5-01-1L LP 47C - plan hits target center - Point	0.00	0.00	6,329.00	2,063.42	-690.32	14,653,716.30	1,792,550.92	40.34742009	-104.45398635
Silverton 5-01-1L BHL 4' - plan hits target center - Point	0.00	0.00	6,329.00	2,058.25	-10,117.76	14,653,652.70	1,783,123.71	40.34740022	-104.48782083

Plan Annotations				
Measured Depth (ft)	Vertical Depth (ft)	Local Coordinates		Comment
		+N/-S (ft)	+E/-W (ft)	
2,000.00	2,000.00	0.00	0.00	KOP Begin 2°/100' build
3,509.26	3,440.41	387.62	-25.45	Begin 30.19° tangent section
6,296.20	5,849.45	1,785.87	-117.26	Begin 10°/100' build/turn
7,177.72	6,329.00	2,063.42	-690.32	LP Begin 90° lateral
11,945.53	6,329.00	2,056.67	-5,458.12	Begin 2°/100' turn
11,950.56	6,329.00	2,056.67	-5,463.15	Begin 90.00° lateral section
16,605.17	6,329.00	2,058.25	-10,117.76	PBHL/TD 16605.17 MD 6329.00 TVD