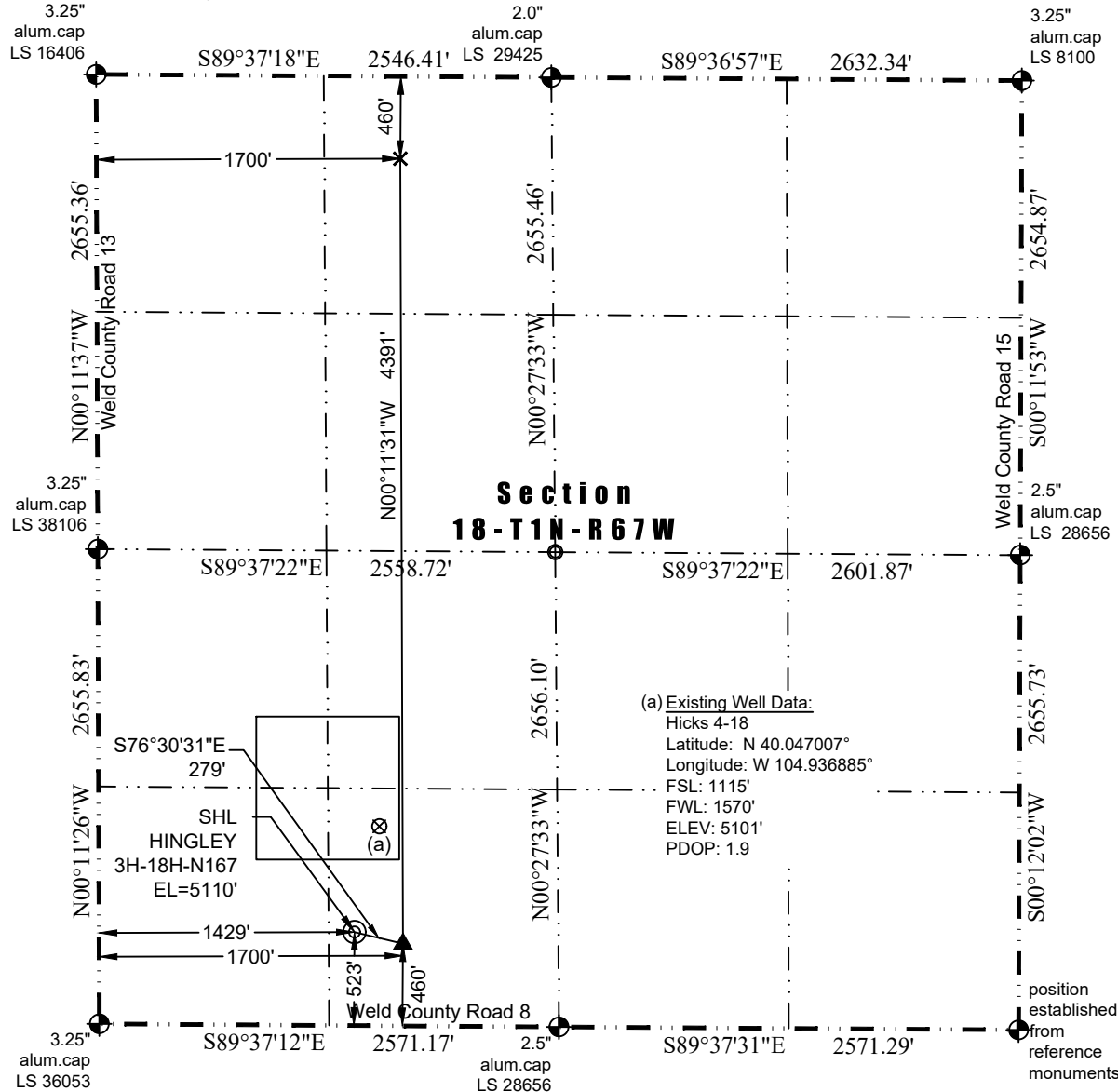


WELL LOCATION CERTIFICATE

THIS MAP DOES NOT REPRESENT A BOUNDARY SURVEY



In accordance with a request from Jay Knutson of Crestone Peak Resources, Washburn Land Surveying, LLC has determined the location of the **Hingley 3H-18H-N167** well site to be SHL: 523' FSL and 1429' FWL, (TPZ: 460' FSL and 1700' FWL, BHL: 460' FNL and 1700' FWL), as measured at ninety (90) degrees from the section lines of Section 18, Township 1 North, Range 67 West of the 6th Principal Meridian, Weld County Colorado.

Proposed Surface Hole Data:

Latitude: N 40.045388°
 Longitude: W 104.937395°
 PDOP: 1.3

Proposed TPZ Data:

Latitude: N 40.045204°
 Longitude: W 104.936428°

Proposed Bottom Hole Data:

Latitude: N 40.057259°
 Longitude: W 104.936381°

Nearest Cultural Items:

Building: 914' southeast
 Building Unit: 816' southeast
 Public Road: 509' south
 Property Line: 523' south
 Existing Well: 607' northeast (Hicks 4-18)

Above Ground Utility: 488' south
 Well Window: SHL is 406' Outside
 Railroad: +5280'
 High Occupancy Building Unit: +5280'
 Designated Outside Activity Area: +5280'

LEGEND

- ⊕ - Found Survey Monument
- ⊙ - Calculated Location
- ⊙ - Surface Hole Location (SHL)
- ▲ - Top of Production Zone (TPZ)
- × - Bottom Hole Location (BHL)

I hereby certify that this Well Location Certificate was prepared by me or under my direct supervision on 1/28/2018 for and on behalf of Crestone Peak Resources that it is not a Land Survey Plat or an Improvement Survey Plat and that it is not to be relied upon for establishment of fences, buildings, or other future improvement lines.

1-28-2018
JOHN ROBERT MCGEEHEE
 Surveyor
 John Robert McGehee SS# 26219
 Well: Hingley 3H-18H-N167 WLC

Notes:

- 1) Bearings and distances based on NAD 83 Colorado North State Plane Coordinate, using RTK GPS observations taken 10/31/17 by operator Jason Dahlman
- 2) Conversion factor to ground (1.0002768105).
- 3) Elevations based on NAVD 88 GPS heights and Geoid 2009 corrections.
- 4) See Location Drawing for visible improvements within 500 feet of Pad Site.
- 5) The surface use is a cultivated field.

NOTICE: According to Colorado law you must commence any legal action based upon any defect in this W.L.C. within three years after you first discover such defect. In no event may any action based upon any defect in this W.L.C. be commenced more than ten years from this said date of the certification shown hereon.