

HALLIBURTON

iCem[®] Service

TERRA ENERGY PARTNERS-EBUS

For: Terra

Date: Tuesday, March 20, 2018

RU 512-17 Surface

API#05-045-23732

Sincerely,

Grand Junction Cement Engineering

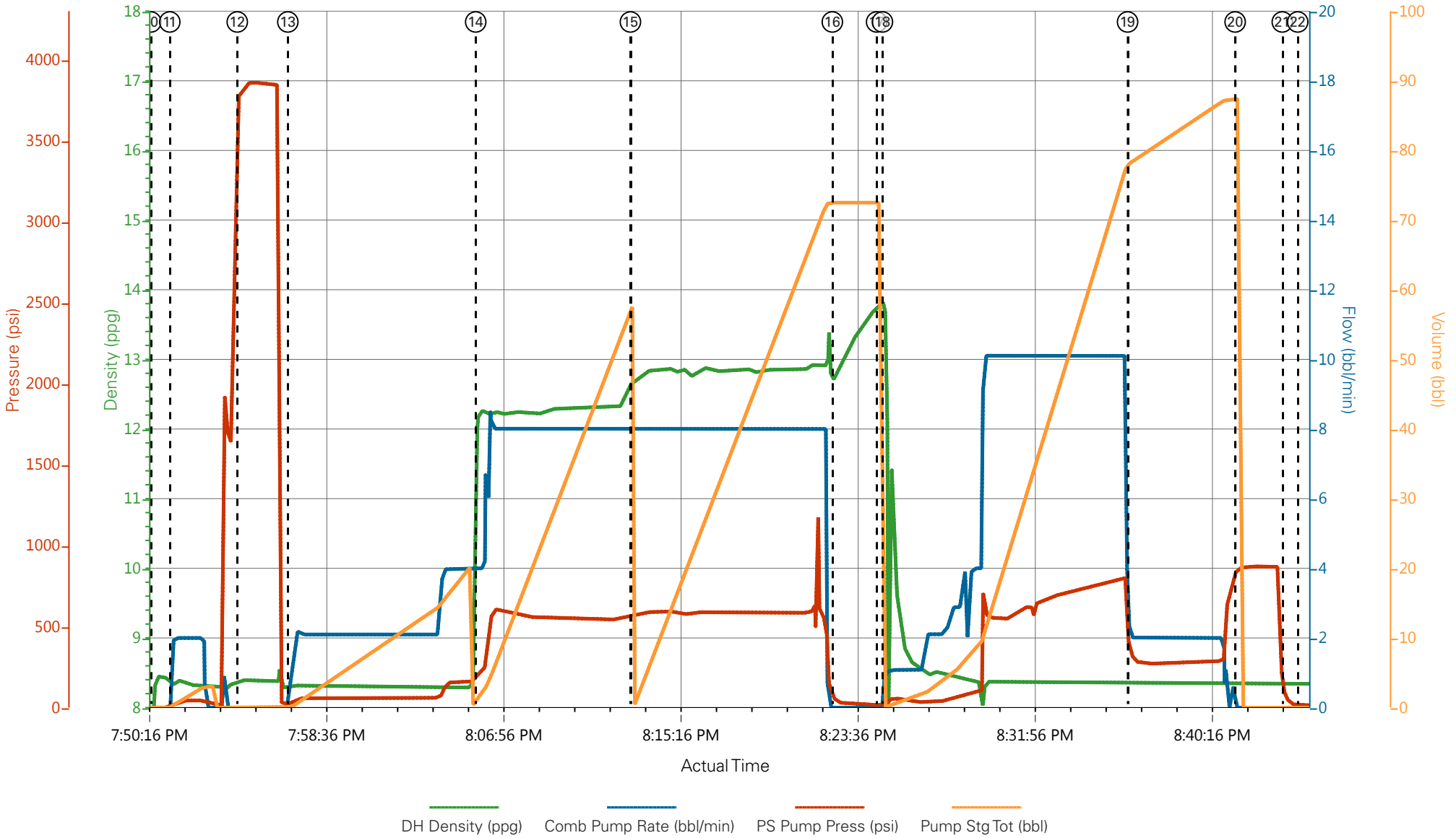
2.0 Real-Time Job Summary

2.1 Job Event Log

Type	Seq. No.	Graph Label	Date	Time	Source	DH Density <i>(ppg)</i>	Comb Pump Rate <i>(bbl/min)</i>	PS Pump Press <i>(psi)</i>	Pump Stg Tot <i>(bbl)</i>	Comments
Event	1	Call Out	3/20/2018	09:00:00	USER					
Event	2	Pre-Convoy Safety Meeting	3/20/2018	13:00:00	USER					JSA COMPLETE
Event	3	Crew Leave Yard	3/20/2018	13:30:00	USER					
Event	4	Arrive At Loc	3/20/2018	15:00:00	USER					RIG PULLING DP
Event	5	Assessment Of Location Safety Meeting	3/20/2018	15:20:00	USER					WATER TEST: PH-7, TEMP-70, CL-0
Event	6	Other	3/20/2018	15:25:00	USER					TP- 1123, TD- 1130, S.J.- 39.8, HOLE- 13.5, MUD#-9#
Event	7	Pre-Rig Up Safety Meeting	3/20/2018	15:30:00	USER					JSA COMPLETE
Event	8	Rig-Up Equipment	3/20/2018	15:45:00	USER					
Event	9	Pre-Job Safety Meeting	3/20/2018	19:30:00	USER					JSA COMPLETE
Event	10	Start Job	3/20/2018	19:50:29	COM5					
Event	11	Prime Pumps	3/20/2018	19:51:23	COM5					FRESH WATER
Event	12	Pressure Test	3/20/2018	19:54:33	USER	8.39	0.00	3764.00	0.0	
Event	13	Pump Spacer 1	3/20/2018	19:56:56	COM5	8.33	2.00	105.0	20.0	FRESH WATER
Event	14	Pump Lead Cement	3/20/2018	20:05:46	COM5	12.3	8.00	600.00	53	125 SKS, 12.3 PPG, 2.38 FT3/SK, 13.71 GAL/SK
Event	15	Pump Tail Cement	3/20/2018	20:13:03	COM5	12.80	8.00	566.00	65.8	175 SKS, 12.8 PPG, 2.11 FT3/SK, 11.78 GAL/SK
Event	16	Shutdown	3/20/2018	20:22:33	COM5					TO DROP TOP PLUG, WASH UP ON TOP OF PLUG
Event	17	Drop Top Plug	3/20/2018	20:24:38	COM5					AWAY
Event	18	Pump Displacement	3/20/2018	20:24:54	USER	8.33	10.0	800.0	85.3	FRESH WATER

Event	19	Slow Rate	3/20/2018	20:36:26	USER	8.33	2.00	280	75.0	TO BUMP PLUG
Event	20	Bump Plug	3/20/2018	20:41:30	COM5	8.33	2.00	305	85.3	PLUG IS BUMPED
Event	21	Check Floats	3/20/2018	20:43:43	USER			890		FLOATS HELD 0.5 BBLS BACK TO TRUCK
Event	22	End Job	3/20/2018	20:44:27	COM5					30 BBLS CMT TO SURFACE, GOOD RETURNS THROUGH OUT JOB, NO PIPE MOVEMENT
Event	23	Post-Job Safety Meeting (Pre Rig-Down)	3/20/2018	21:00:00	USER					JSA COMPLETE
Event	24	Rig-Down Equipment	3/20/2018	21:30:00	USER					
Event	25	Crew Leave Location	3/20/2018	22:00:00	USER					THANK YOU FOR USING HALLIBURTON CEMENT, JAMES LEIST AND CREW

TEP - RU 513-17 - 9 5/8 SURFACE CASING



- | | | | | |
|---|-----------------------------|--------------------|---------------------|---|
| ① Call Out | ⑥ Other | ⑪ Prime Pumps | ⑯ Shutdown | 21 Check Floats |
| ② Pre-Convoy Safety Meeting | ⑦ Pre-Rig Up Safety Meeting | ⑫ Pressure Test | ⑰ Drop Top Plug | 22 End Job |
| ③ Crew Leave Yard | ⑧ Rig-Up Equipment | ⑬ Pump Spacer 1 | ⑱ Pump Displacement | 23 Post-Job Safety Meeting (Pre Rig-Down) |
| ④ Arrive At Loc | ⑨ Pre-Job Safety Meeting | ⑭ Pump Lead Cement | ⑲ Slow Rate | 24 Rig-Down Equipment |
| ⑤ Assessment Of Location Safety Meeting | ⑩ Start Job | ⑮ Pump Tail Cement | 20 Bump Plug | 25 Crew Leave Location |

TEP - RU 513-17 - 9 5/8 SURFACE CASING

