



CRESTONE PEAK
RESOURCES

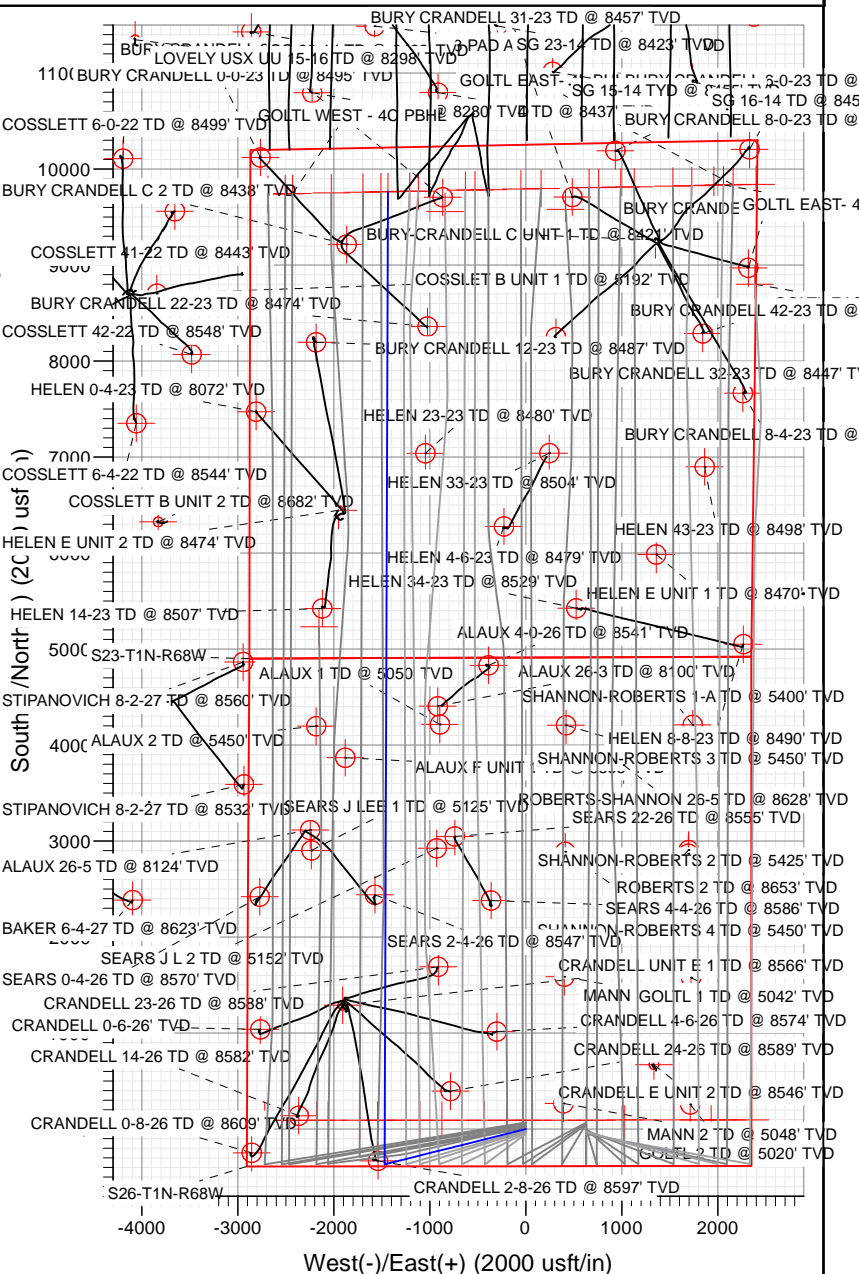
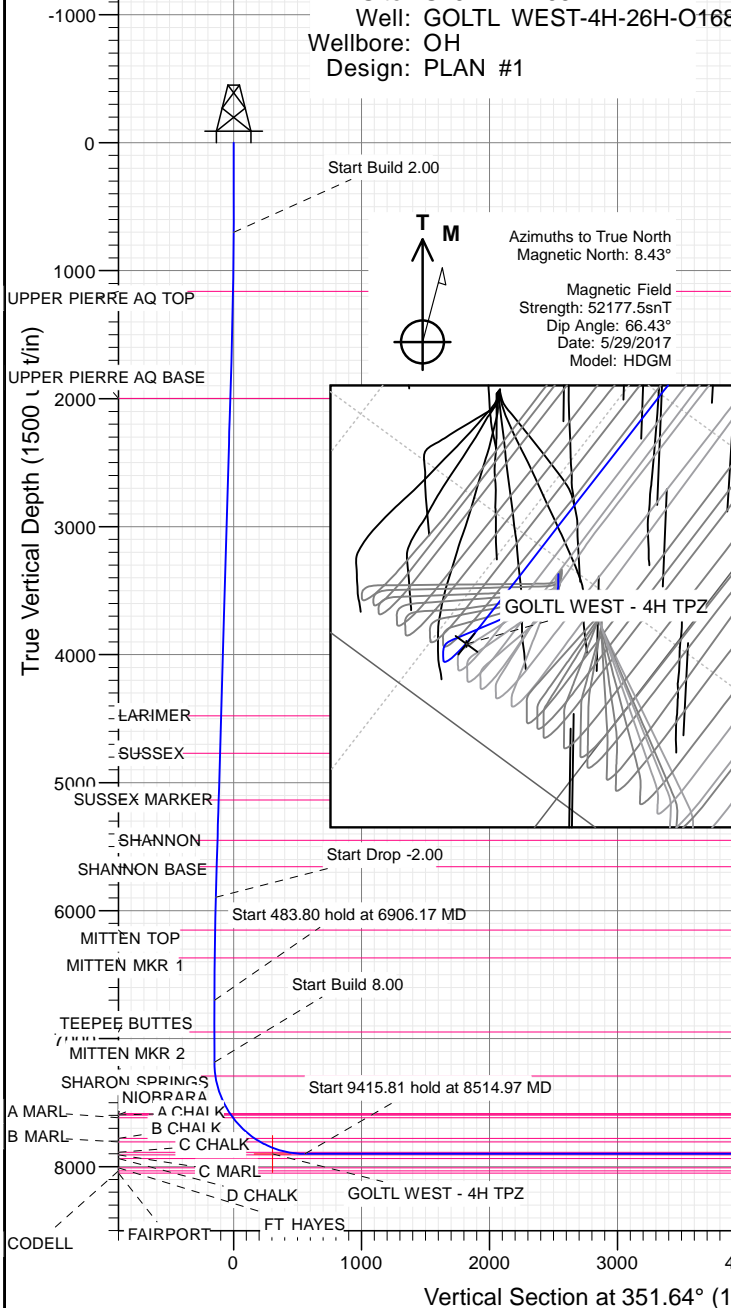
SECTION DETAILS

Sec	MD	Inc	Azi	TVD	+N/-S	+E/-W	Dleg	TFace	Vsect	Target
1	0.00	0.00	0.00	0.00	0.00	0.00	0.00	0.00	0.00	
2	700.00	0.00	0.00	700.00	0.00	0.00	0.00	0.00	0.00	
3	1515.74	16.31	255.98	1504.76	-27.94	-111.92	2.00	255.98	-11.37	
4	6090.43	16.31	255.98	5895.24	-339.20	-1358.76	0.00	0.00	-138.05	
5	6906.17	0.00	0.00	6700.00	-367.14	-1470.68	2.00	180.00	-149.43	
6	7389.97	0.00	0.00	7183.80	-367.14	-1470.68	0.00	0.00	-149.43	
7	8514.97	90.00	0.20	7900.00	349.05	-1468.15	8.00	0.20	558.79	
8	17930.78	90.00	0.20	7900.00	9764.80	-1434.89	0.00	0.00	9869.66	GOLTL WEST - 4H PBHL

PLAN #1
GOLTL WEST-4H-26H-O168
23'12" @ 5199.00ft
Ground Level @ 5176.00
North American Datum 1983
Well GOLTL WEST-4H-26H-O168, True North

Type	Target	TD	No Target (Freehand)	Asimuth	Origin Type	Slot	N/S	E/W	From TVD
Name		TVD		+N/-S	+E/-W	Latitude	Longitude		
GOLTL WEST - 4H PBHL		7900.00		9764.80	-1434.89	40.015955	-104.974917		
GOLTL WEST - 4H TPZ		7900.00		92.57	-1469.06	40.016209	-104.975037		

Project: DJ BASIN
Site: S26-T1N-R68W
Well: GOLTL WEST-4H-26H-O168
Wellbore: OH
Design: PLAN #1



WELL DETAILS: GOLTL WEST-4H-26H-O168

+N/-S	+E/-W	Northing	Ground Level: Easting	5176.00	Latitude	Longitude	Slot
0.00	0.00	1249102.79	3148504.04		40.015955	-104.969792	

CATHEDRAL



Cathedral Energy Services

Planning Report

Database:	USA EDM 5000 Multi Users DB	Local Co-ordinate Reference:	Well GOLTL WEST-4H-26H-O168
Company:	Crestone Peak Resources	TVD Reference:	23' KB @ 5199.00usft
Project:	DJ BASIN	MD Reference:	23' KB @ 5199.00usft
Site:	S26-T1N-R68W	North Reference:	True
Well:	GOLTL WEST-4H-26H-O168	Survey Calculation Method:	Minimum Curvature
Wellbore:	OH		
Design:	PLAN #1		

Project	DJ BASIN		
Map System:	US State Plane 1983	System Datum:	Mean Sea Level
Geo Datum:	North American Datum 1983		
Map Zone:	Colorado Northern Zone		

Site		S26-T1N-R68W			
Site Position:		Northing:	1,249,172.84 usft	Latitude:	40.016147
From:	Map	Easting:	3,148,503.91 usft	Longitude:	-104.969791
Position Uncertainty:	0.00 usft	Slot Radius:	13-3/16 "	Grid Convergence:	0.34 °

Well	GOLTL WEST-4H-26H-O168					
Well Position	+N/-S	0.00 usft	Northing:	1,249,102.79 usft	Latitude:	40.015955
	+E/-W	0.00 usft	Easting:	3,148,504.04 usft	Longitude:	-104.969792
Position Uncertainty		0.00 usft	Wellhead Elevation:	0.00 usft	Ground Level:	5,176.00 usft

Wellbore	OH				
Magnetics	Model Name	Sample Date	Declination	Dip Angle	Field Strength
			(°)	(°)	(nT)
	HDGM	5/29/2017	8.43	66.43	52,177.50000000

Design	PLAN #1			
Audit Notes:				
Version:	Phase:	PLAN	Tie On Depth:	0.00
Vertical Section:	Depth From (TVD)	+N/-S	+E/-W	Direction
	(usft)	(usft)	(usft)	(°)
	0.00	0.00	0.00	351.64

Plan Sections										
Measured Depth (usft)	Inclination (°)	Azimuth (°)	Vertical Depth (usft)	+N/-S (usft)	+E/-W (usft)	Dogleg Rate (°/100usft)	Build Rate (°/100usft)	Turn Rate (°/100usft)	TFO (°)	Target
0.00	0.00	0.00	0.00	0.00	0.00	0.00	0.00	0.00	0.00	
700.00	0.00	0.00	700.00	0.00	0.00	0.00	0.00	0.00	0.00	
1,515.74	16.31	255.98	1,504.76	-27.94	-111.92	2.00	2.00	0.00	255.98	
6,090.43	16.31	255.98	5,895.24	-339.20	-1,358.76	0.00	0.00	0.00	0.00	
6,906.17	0.00	0.00	6,700.00	-367.14	-1,470.68	2.00	-2.00	0.00	180.00	
7,389.97	0.00	0.00	7,183.80	-367.14	-1,470.68	0.00	0.00	0.00	0.00	
8,514.97	90.00	0.20	7,900.00	349.05	-1,468.15	8.00	8.00	0.00	0.20	
17,930.78	90.00	0.20	7,900.00	9,764.80	-1,434.89	0.00	0.00	0.00	0.00	GOLTL WEST - 4H PI

Cathedral Energy Services

Planning Report

Database:	USA EDM 5000 Multi Users DB	Local Co-ordinate Reference:	Well GOLTL WEST-4H-26H-O168
Company:	Crestone Peak Resources	TVD Reference:	23' KB @ 5199.00usft
Project:	DJ BASIN	MD Reference:	23' KB @ 5199.00usft
Site:	S26-T1N-R68W	North Reference:	True
Well:	GOLTL WEST-4H-26H-O168	Survey Calculation Method:	Minimum Curvature
Wellbore:	OH		
Design:	PLAN #1		

Planned Survey									
Measured Depth (usft)	Inclination (°)	Azimuth (°)	Vertical Depth (usft)	+N/-S (usft)	+E/-W (usft)	Vertical Section (usft)	Dogleg Rate (°/100usft)	Build Rate (°/100u)	Comments / Formations
0.00	0.00	0.00	0.00	0.00	0.00	0.00	0.00	0.00	
100.00	0.00	0.00	100.00	0.00	0.00	0.00	0.00	0.00	
200.00	0.00	0.00	200.00	0.00	0.00	0.00	0.00	0.00	
300.00	0.00	0.00	300.00	0.00	0.00	0.00	0.00	0.00	
400.00	0.00	0.00	400.00	0.00	0.00	0.00	0.00	0.00	
500.00	0.00	0.00	500.00	0.00	0.00	0.00	0.00	0.00	
600.00	0.00	0.00	600.00	0.00	0.00	0.00	0.00	0.00	
700.00	0.00	0.00	700.00	0.00	0.00	0.00	0.00	0.00	Start Build 2.00
800.00	2.00	255.98	799.98	-0.42	-1.69	-0.17	2.00	2.00	
900.00	4.00	255.98	899.84	-1.69	-6.77	-0.69	2.00	2.00	
1,000.00	6.00	255.98	999.45	-3.80	-15.23	-1.55	2.00	2.00	
1,100.00	8.00	255.98	1,098.70	-6.75	-27.05	-2.75	2.00	2.00	
1,163.01	9.26	255.98	1,161.00	-9.04	-36.22	-3.68	2.00	2.00	UPPER PIERRE AQ TOP
1,200.00	10.00	255.98	1,197.47	-10.54	-42.23	-4.29	2.00	2.00	
1,300.00	12.00	255.98	1,295.62	-15.16	-60.74	-6.17	2.00	2.00	
1,400.00	14.00	255.98	1,393.06	-20.61	-82.56	-8.39	2.00	2.00	
1,500.00	16.00	255.98	1,489.64	-26.88	-107.67	-10.94	2.00	2.00	
1,515.74	16.31	255.98	1,504.76	-27.94	-111.92	-11.37	2.00	2.00	Start 4574.69 hold at 1515.74 MD
1,600.00	16.31	255.98	1,585.63	-33.67	-134.89	-13.71	0.00	0.00	
1,700.00	16.31	255.98	1,681.60	-40.48	-162.14	-16.47	0.00	0.00	
1,800.00	16.31	255.98	1,777.57	-47.28	-189.40	-19.24	0.00	0.00	
1,900.00	16.31	255.98	1,873.55	-54.09	-216.65	-22.01	0.00	0.00	
2,000.00	16.31	255.98	1,969.52	-60.89	-243.91	-24.78	0.00	0.00	
2,029.67	16.31	255.98	1,998.00	-62.91	-252.00	-25.60	0.00	0.00	UPPER PIERRE AQ BASE
2,100.00	16.31	255.98	2,065.49	-67.69	-271.16	-27.55	0.00	0.00	
2,200.00	16.31	255.98	2,161.47	-74.50	-298.42	-30.32	0.00	0.00	
2,300.00	16.31	255.98	2,257.44	-81.30	-325.67	-33.09	0.00	0.00	
2,400.00	16.31	255.98	2,353.41	-88.10	-352.93	-35.86	0.00	0.00	
2,500.00	16.31	255.98	2,449.39	-94.91	-380.18	-38.63	0.00	0.00	
2,600.00	16.31	255.98	2,545.36	-101.71	-407.44	-41.40	0.00	0.00	
2,700.00	16.31	255.98	2,641.33	-108.52	-434.69	-44.17	0.00	0.00	
2,800.00	16.31	255.98	2,737.31	-115.32	-461.95	-46.94	0.00	0.00	
2,900.00	16.31	255.98	2,833.28	-122.12	-489.20	-49.70	0.00	0.00	
3,000.00	16.31	255.98	2,929.25	-128.93	-516.46	-52.47	0.00	0.00	
3,100.00	16.31	255.98	3,025.23	-135.73	-543.71	-55.24	0.00	0.00	
3,200.00	16.31	255.98	3,121.20	-142.54	-570.97	-58.01	0.00	0.00	
3,300.00	16.31	255.98	3,217.17	-149.34	-598.22	-60.78	0.00	0.00	
3,400.00	16.31	255.98	3,313.15	-156.14	-625.48	-63.55	0.00	0.00	
3,500.00	16.31	255.98	3,409.12	-162.95	-652.73	-66.32	0.00	0.00	
3,600.00	16.31	255.98	3,505.09	-169.75	-679.99	-69.09	0.00	0.00	
3,700.00	16.31	255.98	3,601.07	-176.56	-707.24	-71.86	0.00	0.00	
3,800.00	16.31	255.98	3,697.04	-183.36	-734.50	-74.63	0.00	0.00	
3,900.00	16.31	255.98	3,793.01	-190.16	-761.75	-77.40	0.00	0.00	
4,000.00	16.31	255.98	3,888.99	-196.97	-789.01	-80.17	0.00	0.00	
4,100.00	16.31	255.98	3,984.96	-203.77	-816.26	-82.94	0.00	0.00	
4,200.00	16.31	255.98	4,080.93	-210.58	-843.52	-85.70	0.00	0.00	
4,300.00	16.31	255.98	4,176.91	-217.38	-870.77	-88.47	0.00	0.00	
4,400.00	16.31	255.98	4,272.88	-224.18	-898.03	-91.24	0.00	0.00	
4,500.00	16.31	255.98	4,368.85	-230.99	-925.28	-94.01	0.00	0.00	
4,600.00	16.31	255.98	4,464.83	-237.79	-952.54	-96.78	0.00	0.00	
4,613.73	16.31	255.98	4,478.00	-238.73	-956.28	-97.16	0.00	0.00	LARIMER
4,700.00	16.31	255.98	4,560.80	-244.60	-979.80	-99.55	0.00	0.00	

Cathedral Energy Services

Planning Report

Database:	USA EDM 5000 Multi Users DB	Local Co-ordinate Reference:	Well GOLTL WEST-4H-26H-O168
Company:	Crestone Peak Resources	TVD Reference:	23' KB @ 5199.00usft
Project:	DJ BASIN	MD Reference:	23' KB @ 5199.00usft
Site:	S26-T1N-R68W	North Reference:	True
Well:	GOLTL WEST-4H-26H-O168	Survey Calculation Method:	Minimum Curvature
Wellbore:	OH		
Design:	PLAN #1		

Planned Survey									
Measured Depth (usft)	Inclination (°)	Azimuth (°)	Vertical Depth (usft)	+N/-S (usft)	+E/-W (usft)	Vertical Section (usft)	Dogleg Rate (°/100usft)	Build Rate (°/100u)	Comments / Formations
4,800.00	16.31	255.98	4,656.77	-251.40	-1,007.05	-102.32	0.00	0.00	
4,900.00	16.31	255.98	4,752.75	-258.20	-1,034.31	-105.09	0.00	0.00	
4,917.98	16.31	255.98	4,770.00	-259.43	-1,039.21	-105.59	0.00	0.00	SUSSEX
5,000.00	16.31	255.98	4,848.72	-265.01	-1,061.56	-107.86	0.00	0.00	
5,100.00	16.31	255.98	4,944.69	-271.81	-1,088.82	-110.63	0.00	0.00	
5,200.00	16.31	255.98	5,040.67	-278.62	-1,116.07	-113.40	0.00	0.00	
5,298.29	16.31	255.98	5,135.00	-285.30	-1,142.86	-116.12	0.00	0.00	SUSSEX MARKER
5,300.00	16.31	255.98	5,136.64	-285.42	-1,143.33	-116.17	0.00	0.00	
5,400.00	16.31	255.98	5,232.61	-292.22	-1,170.58	-118.94	0.00	0.00	
5,500.00	16.31	255.98	5,328.59	-299.03	-1,197.84	-121.70	0.00	0.00	
5,600.00	16.31	255.98	5,424.56	-305.83	-1,225.09	-124.47	0.00	0.00	
5,626.51	16.31	255.98	5,450.00	-307.63	-1,232.32	-125.21	0.00	0.00	SHANNON
5,700.00	16.31	255.98	5,520.53	-312.64	-1,252.35	-127.24	0.00	0.00	
5,800.00	16.31	255.98	5,616.51	-319.44	-1,279.60	-130.01	0.00	0.00	
5,842.19	16.31	255.98	5,657.00	-322.31	-1,291.10	-131.18	0.00	0.00	SHANNON BASE
5,900.00	16.31	255.98	5,712.48	-326.24	-1,306.86	-132.78	0.00	0.00	
6,000.00	16.31	255.98	5,808.45	-333.05	-1,334.11	-135.55	0.00	0.00	
6,090.43	16.31	255.98	5,895.24	-339.20	-1,358.76	-138.05	0.00	0.00	Start Drop -2.00
6,100.00	16.12	255.98	5,904.43	-339.85	-1,361.35	-138.32	2.00	-2.00	
6,200.00	14.12	255.98	6,000.96	-346.17	-1,386.66	-140.89	2.00	-2.00	
6,300.00	12.12	255.98	6,098.34	-351.67	-1,408.69	-143.13	2.00	-2.00	
6,353.75	11.05	255.98	6,151.00	-354.28	-1,419.16	-144.19	2.00	-2.00	MITTEN TOP
6,400.00	10.12	255.98	6,196.46	-356.34	-1,427.41	-145.03	2.00	-2.00	
6,500.00	8.12	255.98	6,295.19	-360.18	-1,442.79	-146.59	2.00	-2.00	
6,574.43	6.63	255.98	6,369.00	-362.49	-1,452.07	-147.54	2.00	-2.00	MITTEN MKR 1
6,600.00	6.12	255.98	6,394.41	-363.18	-1,454.82	-147.82	2.00	-2.00	
6,700.00	4.12	255.98	6,494.01	-365.34	-1,463.49	-148.70	2.00	-2.00	
6,800.00	2.12	255.98	6,593.86	-366.66	-1,468.77	-149.23	2.00	-2.00	
6,900.00	0.12	255.98	6,693.83	-367.14	-1,470.67	-149.43	2.00	-2.00	
6,906.17	0.00	0.00	6,700.00	-367.14	-1,470.68	-149.43	2.00	-2.00	Start 483.80 hold at 6906.17 MD
7,000.00	0.00	0.00	6,793.83	-367.14	-1,470.68	-149.43	0.00	0.00	
7,100.00	0.00	0.00	6,893.83	-367.14	-1,470.68	-149.43	0.00	0.00	
7,154.17	0.00	0.00	6,948.00	-367.14	-1,470.68	-149.43	0.00	0.00	TEEPEE BUTTES
7,200.00	0.00	0.00	6,993.83	-367.14	-1,470.68	-149.43	0.00	0.00	
7,300.00	0.00	0.00	7,093.83	-367.14	-1,470.68	-149.43	0.00	0.00	
7,389.97	0.00	0.00	7,183.80	-367.14	-1,470.68	-149.43	0.00	0.00	Start Build 8.00
7,400.00	0.80	0.20	7,193.83	-367.07	-1,470.68	-149.36	8.00	8.00	
7,498.58	8.69	0.20	7,292.00	-358.92	-1,470.65	-141.30	8.00	8.00	MITTEN MKR 2
7,500.00	8.80	0.20	7,293.40	-358.70	-1,470.65	-141.09	8.00	8.00	
7,600.00	16.80	0.20	7,390.83	-336.56	-1,470.57	-119.19	8.00	8.00	
7,700.00	24.80	0.20	7,484.24	-301.08	-1,470.45	-84.10	8.00	8.00	
7,800.00	32.80	0.20	7,571.80	-252.94	-1,470.28	-36.50	8.00	8.00	
7,817.03	34.16	0.20	7,586.00	-243.54	-1,470.24	-27.21	8.00	8.00	SHARON SPRINGS
7,827.96	35.04	0.20	7,595.00	-237.34	-1,470.22	-21.07	8.00	8.00	NIOBRARA - A CHALK
7,855.20	37.22	0.20	7,617.00	-221.28	-1,470.16	-5.19	8.00	8.00	A MARL
7,900.00	40.80	0.20	7,651.80	-193.08	-1,470.07	22.69	8.00	8.00	
8,000.00	48.80	0.20	7,722.70	-122.67	-1,469.82	92.32	8.00	8.00	
8,092.56	56.21	0.20	7,779.00	-49.29	-1,469.56	164.88	8.00	8.00	B CHALK
8,100.00	56.80	0.20	7,783.11	-43.08	-1,469.54	171.02	8.00	8.00	
8,143.89	60.31	0.20	7,806.00	-5.64	-1,469.40	208.05	8.00	8.00	B MARL
8,200.00	64.80	0.20	7,831.85	44.14	-1,469.23	257.27	8.00	8.00	
8,300.00	72.80	0.20	7,867.98	137.30	-1,468.90	349.39	8.00	8.00	

Cathedral Energy Services

Planning Report

Database:	USA EDM 5000 Multi Users DB	Local Co-ordinate Reference:	Well GOLTL WEST-4H-26H-O168
Company:	Crestone Peak Resources	TVD Reference:	23' KB @ 5199.00usft
Project:	DJ BASIN	MD Reference:	23' KB @ 5199.00usft
Site:	S26-T1N-R68W	North Reference:	True
Well:	GOLTL WEST-4H-26H-O168	Survey Calculation Method:	Minimum Curvature
Wellbore:	OH		
Design:	PLAN #1		

Planned Survey

Measured Depth (usft)	Inclination (°)	Azimuth (°)	Vertical Depth (usft)	+N/-S (usft)	+E/-W (usft)	Vertical Section (usft)	Dogleg Rate (°/100usft)	Build Rate (°/100u)	Comments / Formations
8,378.30	79.07	0.20	7,887.00	213.22	-1,468.63	424.46	8.00	8.00	C CHALK
8,400.00	80.80	0.20	7,890.79	234.58	-1,468.55	445.59	8.00	8.00	
8,500.00	88.80	0.20	7,899.84	334.08	-1,468.20	543.99	8.00	8.00	
8,514.97	90.00	0.20	7,900.00	349.05	-1,468.15	558.79	8.00	8.00	Start 9415.81 hold at 8514.97 MD
8,600.00	90.00	0.20	7,900.00	434.08	-1,467.85	642.87	0.00	0.00	
8,700.00	90.00	0.20	7,900.00	534.08	-1,467.50	741.76	0.00	0.00	
8,800.00	90.00	0.20	7,900.00	634.08	-1,467.14	840.64	0.00	0.00	
8,900.00	90.00	0.20	7,900.00	734.08	-1,466.79	939.53	0.00	0.00	
9,000.00	90.00	0.20	7,900.00	834.08	-1,466.44	1,038.41	0.00	0.00	
9,100.00	90.00	0.20	7,900.00	934.08	-1,466.08	1,137.30	0.00	0.00	
9,200.00	90.00	0.20	7,900.00	1,034.08	-1,465.73	1,236.18	0.00	0.00	
9,300.00	90.00	0.20	7,900.00	1,134.08	-1,465.38	1,335.07	0.00	0.00	
9,400.00	90.00	0.20	7,900.00	1,234.08	-1,465.02	1,433.95	0.00	0.00	
9,500.00	90.00	0.20	7,900.00	1,334.08	-1,464.67	1,532.84	0.00	0.00	
9,600.00	90.00	0.20	7,900.00	1,434.07	-1,464.32	1,631.73	0.00	0.00	
9,700.00	90.00	0.20	7,900.00	1,534.07	-1,463.96	1,730.61	0.00	0.00	
9,800.00	90.00	0.20	7,900.00	1,634.07	-1,463.61	1,829.50	0.00	0.00	
9,900.00	90.00	0.20	7,900.00	1,734.07	-1,463.26	1,928.38	0.00	0.00	
10,000.00	90.00	0.20	7,900.00	1,834.07	-1,462.90	2,027.27	0.00	0.00	
10,100.00	90.00	0.20	7,900.00	1,934.07	-1,462.55	2,126.15	0.00	0.00	
10,200.00	90.00	0.20	7,900.00	2,034.07	-1,462.20	2,225.04	0.00	0.00	
10,300.00	90.00	0.20	7,900.00	2,134.07	-1,461.84	2,323.92	0.00	0.00	
10,400.00	90.00	0.20	7,900.00	2,234.07	-1,461.49	2,422.81	0.00	0.00	
10,500.00	90.00	0.20	7,900.00	2,334.07	-1,461.14	2,521.70	0.00	0.00	
10,600.00	90.00	0.20	7,900.00	2,434.07	-1,460.78	2,620.58	0.00	0.00	
10,700.00	90.00	0.20	7,900.00	2,534.07	-1,460.43	2,719.47	0.00	0.00	
10,800.00	90.00	0.20	7,900.00	2,634.07	-1,460.08	2,818.35	0.00	0.00	
10,900.00	90.00	0.20	7,900.00	2,734.07	-1,459.72	2,917.24	0.00	0.00	
11,000.00	90.00	0.20	7,900.00	2,834.07	-1,459.37	3,016.12	0.00	0.00	
11,100.00	90.00	0.20	7,900.00	2,934.07	-1,459.02	3,115.01	0.00	0.00	
11,200.00	90.00	0.20	7,900.00	3,034.06	-1,458.66	3,213.89	0.00	0.00	
11,300.00	90.00	0.20	7,900.00	3,134.06	-1,458.31	3,312.78	0.00	0.00	
11,400.00	90.00	0.20	7,900.00	3,234.06	-1,457.96	3,411.67	0.00	0.00	
11,500.00	90.00	0.20	7,900.00	3,334.06	-1,457.60	3,510.55	0.00	0.00	
11,600.00	90.00	0.20	7,900.00	3,434.06	-1,457.25	3,609.44	0.00	0.00	
11,700.00	90.00	0.20	7,900.00	3,534.06	-1,456.90	3,708.32	0.00	0.00	
11,800.00	90.00	0.20	7,900.00	3,634.06	-1,456.54	3,807.21	0.00	0.00	
11,900.00	90.00	0.20	7,900.00	3,734.06	-1,456.19	3,906.09	0.00	0.00	
12,000.00	90.00	0.20	7,900.00	3,834.06	-1,455.84	4,004.98	0.00	0.00	
12,100.00	90.00	0.20	7,900.00	3,934.06	-1,455.49	4,103.86	0.00	0.00	
12,200.00	90.00	0.20	7,900.00	4,034.06	-1,455.13	4,202.75	0.00	0.00	
12,300.00	90.00	0.20	7,900.00	4,134.06	-1,454.78	4,301.64	0.00	0.00	
12,400.00	90.00	0.20	7,900.00	4,234.06	-1,454.43	4,400.52	0.00	0.00	
12,500.00	90.00	0.20	7,900.00	4,334.06	-1,454.07	4,499.41	0.00	0.00	
12,600.00	90.00	0.20	7,900.00	4,434.06	-1,453.72	4,598.29	0.00	0.00	
12,700.00	90.00	0.20	7,900.00	4,534.06	-1,453.37	4,697.18	0.00	0.00	
12,800.00	90.00	0.20	7,900.00	4,634.05	-1,453.01	4,796.06	0.00	0.00	
12,900.00	90.00	0.20	7,900.00	4,734.05	-1,452.66	4,894.95	0.00	0.00	
13,000.00	90.00	0.20	7,900.00	4,834.05	-1,452.31	4,993.83	0.00	0.00	
13,100.00	90.00	0.20	7,900.00	4,934.05	-1,451.95	5,092.72	0.00	0.00	
13,200.00	90.00	0.20	7,900.00	5,034.05	-1,451.60	5,191.61	0.00	0.00	
13,300.00	90.00	0.20	7,900.00	5,134.05	-1,451.25	5,290.49	0.00	0.00	

Cathedral Energy Services

Planning Report

Database:	USA EDM 5000 Multi Users DB	Local Co-ordinate Reference:	Well GOLTL WEST-4H-26H-O168
Company:	Crestone Peak Resources	TVD Reference:	23' KB @ 5199.00usft
Project:	DJ BASIN	MD Reference:	23' KB @ 5199.00usft
Site:	S26-T1N-R68W	North Reference:	True
Well:	GOLTL WEST-4H-26H-O168	Survey Calculation Method:	Minimum Curvature
Wellbore:	OH		
Design:	PLAN #1		

Planned Survey

Measured Depth (usft)	Inclination (°)	Azimuth (°)	Vertical Depth (usft)	+N/-S (usft)	+E/-W (usft)	Vertical Section (usft)	Dogleg Rate (°/100usft)	Build Rate (°/100u)	Comments / Formations
13,400.00	90.00	0.20	7,900.00	5,234.05	-1,450.89	5,389.38	0.00	0.00	
13,500.00	90.00	0.20	7,900.00	5,334.05	-1,450.54	5,488.26	0.00	0.00	
13,600.00	90.00	0.20	7,900.00	5,434.05	-1,450.19	5,587.15	0.00	0.00	
13,700.00	90.00	0.20	7,900.00	5,534.05	-1,449.83	5,686.03	0.00	0.00	
13,800.00	90.00	0.20	7,900.00	5,634.05	-1,449.48	5,784.92	0.00	0.00	
13,900.00	90.00	0.20	7,900.00	5,734.05	-1,449.13	5,883.80	0.00	0.00	
14,000.00	90.00	0.20	7,900.00	5,834.05	-1,448.77	5,982.69	0.00	0.00	
14,100.00	90.00	0.20	7,900.00	5,934.05	-1,448.42	6,081.58	0.00	0.00	
14,200.00	90.00	0.20	7,900.00	6,034.05	-1,448.07	6,180.46	0.00	0.00	
14,300.00	90.00	0.20	7,900.00	6,134.05	-1,447.71	6,279.35	0.00	0.00	
14,400.00	90.00	0.20	7,900.00	6,234.04	-1,447.36	6,378.23	0.00	0.00	
14,500.00	90.00	0.20	7,900.00	6,334.04	-1,447.01	6,477.12	0.00	0.00	
14,600.00	90.00	0.20	7,900.00	6,434.04	-1,446.65	6,576.00	0.00	0.00	
14,700.00	90.00	0.20	7,900.00	6,534.04	-1,446.30	6,674.89	0.00	0.00	
14,800.00	90.00	0.20	7,900.00	6,634.04	-1,445.95	6,773.77	0.00	0.00	
14,900.00	90.00	0.20	7,900.00	6,734.04	-1,445.59	6,872.66	0.00	0.00	
15,000.00	90.00	0.20	7,900.00	6,834.04	-1,445.24	6,971.55	0.00	0.00	
15,100.00	90.00	0.20	7,900.00	6,934.04	-1,444.89	7,070.43	0.00	0.00	
15,200.00	90.00	0.20	7,900.00	7,034.04	-1,444.53	7,169.32	0.00	0.00	
15,300.00	90.00	0.20	7,900.00	7,134.04	-1,444.18	7,268.20	0.00	0.00	
15,400.00	90.00	0.20	7,900.00	7,234.04	-1,443.83	7,367.09	0.00	0.00	
15,500.00	90.00	0.20	7,900.00	7,334.04	-1,443.47	7,465.97	0.00	0.00	
15,600.00	90.00	0.20	7,900.00	7,434.04	-1,443.12	7,564.86	0.00	0.00	
15,700.00	90.00	0.20	7,900.00	7,534.04	-1,442.77	7,663.74	0.00	0.00	
15,800.00	90.00	0.20	7,900.00	7,634.04	-1,442.41	7,762.63	0.00	0.00	
15,900.00	90.00	0.20	7,900.00	7,734.04	-1,442.06	7,861.52	0.00	0.00	
16,000.00	90.00	0.20	7,900.00	7,834.03	-1,441.71	7,960.40	0.00	0.00	
16,100.00	90.00	0.20	7,900.00	7,934.03	-1,441.35	8,059.29	0.00	0.00	
16,200.00	90.00	0.20	7,900.00	8,034.03	-1,441.00	8,158.17	0.00	0.00	
16,300.00	90.00	0.20	7,900.00	8,134.03	-1,440.65	8,257.06	0.00	0.00	
16,400.00	90.00	0.20	7,900.00	8,234.03	-1,440.29	8,355.94	0.00	0.00	
16,500.00	90.00	0.20	7,900.00	8,334.03	-1,439.94	8,454.83	0.00	0.00	
16,600.00	90.00	0.20	7,900.00	8,434.03	-1,439.59	8,553.71	0.00	0.00	
16,700.00	90.00	0.20	7,900.00	8,534.03	-1,439.23	8,652.60	0.00	0.00	
16,800.00	90.00	0.20	7,900.00	8,634.03	-1,438.88	8,751.49	0.00	0.00	
16,900.00	90.00	0.20	7,900.00	8,734.03	-1,438.53	8,850.37	0.00	0.00	
17,000.00	90.00	0.20	7,900.00	8,834.03	-1,438.18	8,949.26	0.00	0.00	
17,100.00	90.00	0.20	7,900.00	8,934.03	-1,437.82	9,048.14	0.00	0.00	
17,200.00	90.00	0.20	7,900.00	9,034.03	-1,437.47	9,147.03	0.00	0.00	
17,300.00	90.00	0.20	7,900.00	9,134.03	-1,437.12	9,245.91	0.00	0.00	
17,400.00	90.00	0.20	7,900.00	9,234.03	-1,436.76	9,344.80	0.00	0.00	
17,500.00	90.00	0.20	7,900.00	9,334.03	-1,436.41	9,443.68	0.00	0.00	
17,600.00	90.00	0.20	7,900.00	9,434.02	-1,436.06	9,542.57	0.00	0.00	
17,700.00	90.00	0.20	7,900.00	9,534.02	-1,435.70	9,641.46	0.00	0.00	
17,800.00	90.00	0.20	7,900.00	9,634.02	-1,435.35	9,740.34	0.00	0.00	
17,900.00	90.00	0.20	7,900.00	9,734.02	-1,435.00	9,839.23	0.00	0.00	
17,930.78	90.00	0.20	7,900.00	9,764.80	-1,434.89	9,869.66	0.00	0.00	TD at 17930.78

Cathedral Energy Services

Planning Report

Database:	USA EDM 5000 Multi Users DB	Local Co-ordinate Reference:	Well GOLTL WEST-4H-26H-O168
Company:	Crestone Peak Resources	TVD Reference:	23' KB @ 5199.00usft
Project:	DJ BASIN	MD Reference:	23' KB @ 5199.00usft
Site:	S26-T1N-R68W	North Reference:	True
Well:	GOLTL WEST-4H-26H-O168	Survey Calculation Method:	Minimum Curvature
Wellbore:	OH		
Design:	PLAN #1		

Targets									
Target Name									
- hit/miss target	Dip Angle	Dip Dir.	TVD	+N/-S	+E/-W	Northing	Easting	Latitude	Longitude
- Shape	(°)	(°)	(usft)	(usft)	(usft)	(usft)	(usft)		
GOLTL WEST - 4H PBH	0.00	0.00	7,900.00	9,764.80	-1,434.89	1,258,858.84	3,147,010.79	40.042761	-104.974917
- plan hits target center									
- Point									
GOLTL WEST - 4H TPZ	0.00	0.00	7,900.00	92.57	-1,469.06	1,249,186.58	3,147,034.46	40.016209	-104.975037
- plan misses target center by 44.56usft at 8269.86usft MD (7858.46 TVD, 108.70 N, -1469.00 E)									
- Point									

Formations						
Measured Depth	Vertical Depth	Name	Lithology	Dip	Dip Direction	
(usft)	(usft)			(°)	(°)	
1,163.01	1,161.00	UPPER PIERRE AQ TOP				
2,029.67	1,998.00	UPPER PIERRE AQ BASE				
4,613.73	4,478.00	LARIMER				
4,917.98	4,770.00	SUSSEX				
5,298.29	5,135.00	SUSSEX MARKER				
5,626.51	5,450.00	SHANNON				
5,842.19	5,657.00	SHANNON BASE				
6,353.75	6,151.00	MITTEN TOP				
6,574.43	6,369.00	MITTEN MKR 1				
7,154.17	6,948.00	TEEPEE BUTTES				
7,498.58	7,292.00	MITTEN MKR 2				
7,817.03	7,586.00	SHARON SPRINGS				
7,827.96	7,595.00	NIOBRARA				
7,827.96	7,595.00	A CHALK				
7,855.20	7,617.00	A MARL				
8,092.56	7,779.00	B CHALK				
8,143.89	7,806.00	B MARL				
8,378.30	7,887.00	C CHALK				

Plan Annotations				
Measured Depth	Vertical Depth	Local Coordinates		Comment
(usft)	(usft)	+N/-S (usft)	+E/-W (usft)	
700.00	700.00	0.00	0.00	Start Build 2.00
1,515.74	1,504.76	-27.94	-111.92	Start 4574.69 hold at 1515.74 MD
6,090.43	5,895.24	-339.20	-1,358.76	Start Drop -2.00
6,906.17	6,700.00	-367.14	-1,470.68	Start 483.80 hold at 6906.17 MD
7,389.97	7,183.80	-367.14	-1,470.68	Start Build 8.00
8,514.97	7,900.00	349.05	-1,468.15	Start 9415.81 hold at 8514.97 MD
17,930.78	7,900.00	9,764.80	-1,434.89	TD at 17930.78