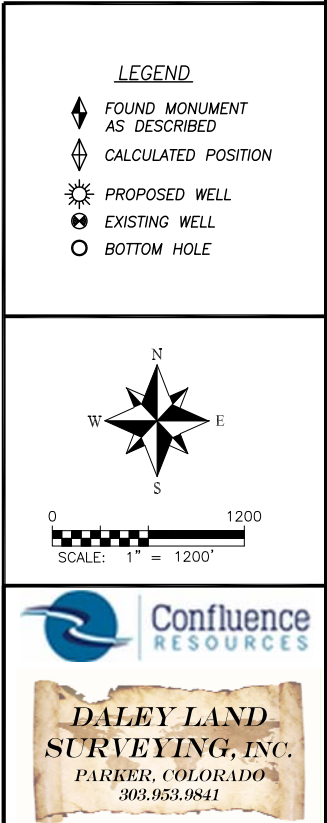


## \\Survey\1702001\Drawings\MWP\_70 Ranch 10 West Well Pad.dwg



**MULTI WELL PLAN**  
**70 RANCH 10 WEST WELL PAD**  
SECTION 3, TOWNSHIP 4 NORTH, RANGE 63 WEST OF THE 6TH P.M.

Bottom Hole Location						
No	Well Name	Latitude	Longitude	Footage		BH Location STR
1	70 Ranch 10-8-4L	N40.30625°	W104.43193°	470' FSL	470' FWL	15-4N-63W
2	70 Ranch 10-21-3L	N40.30625°	W104.43154°	470' FSL	580' FWL	15-4N-63W
3	70 Ranch 10-8-2L	N40.30626°	W104.43100°	470' FSL	730' FWL	15-4N-63W
4	70 Ranch 10-19-1L	N40.30627°	W104.43038°	470' FSL	904' FWL	15-4N-63W
5	70 Ranch 10-18-3L	N40.30628°	W104.42960°	470' FSL	1121' FWL	15-4N-63W
6	70 Ranch 10-5-4L	N40.30630°	W104.42882°	470' FSL	1338' FWL	15-4N-63W
7	70 Ranch 10-17-2L	N40.30630°	W104.42882°	470' FSL	1338' FWL	15-4N-63W
8	70 Ranch 10-16-1L	N40.30631°	W104.42804°	470' FSL	1555' FWL	15-4N-63W
9	70 Ranch 10-15-3L	N40.30632°	W104.42727°	470' FSL	1772' FWL	15-4N-63W
10	70 Ranch 10-14-2L	N40.30633°	W104.42649°	470' FSL	1989' FWL	15-4N-63W
11	70 Ranch 10-4-4L	N40.30635°	W104.42571°	470' FSL	2206' FWL	15-4N-63W
12	70 Ranch 10-13-1L	N40.30635°	W104.42571°	470' FSL	2206' FWL	15-4N-63W
13	70 Ranch 10-12-3L	N40.30636°	W104.42493°	470' FSL	2423' FWL	15-4N-63W

