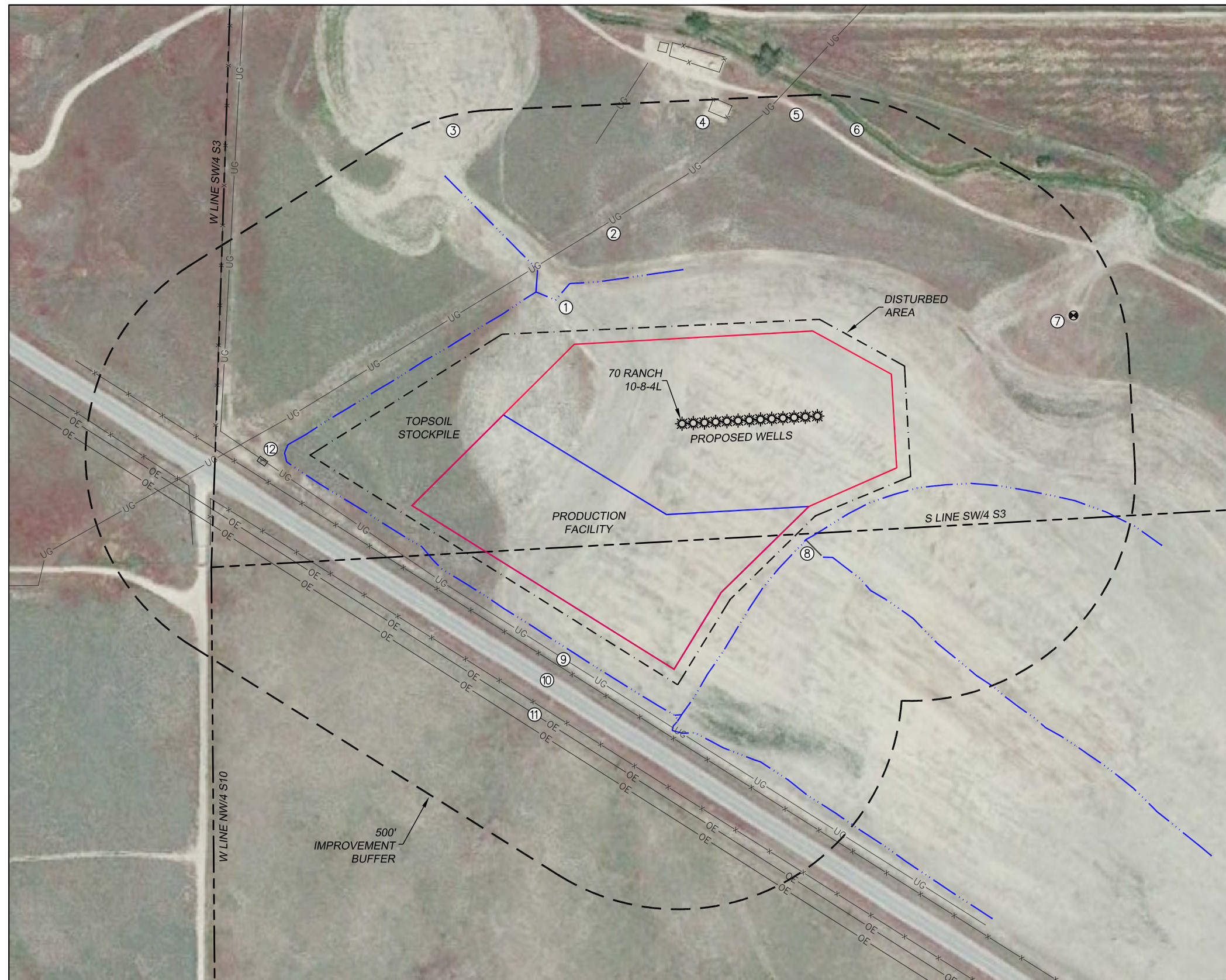


LOCATION DRAWING
70 RANCH 10 WEST
WELL AND PRODUCTION PAD

SECTION 3, TOWNSHIP 4 NORTH, RANGE 63 WEST
OF THE 6TH P.M., WELD COUNTY



CULTURAL ITEMS:

MEASURED FROM THE NEAREST PROPOSED WELLHEAD

BUILDING:	3333'± W
BUILDING UNIT:	4586'± SE
HIGH OCC. BLD. UNIT:	5280'±
DES. OUTSIDE ACTIVITY AREA:	5280'±
PUBLIC ROAD:	631'± SW
ABOVE GROUND UTILITY:	722'± SW
RAILROAD:	5280'±
PROPERTY LINE:	260'± S

CULTURAL ITEMS:

MEASURED FROM THE NEAREST PROPOSED EQUIPMENT

BUILDING:	2750'± W
BUILDING UNIT:	4574'± SE
HIGH OCC. BLD. UNIT:	5280'±
DES. OUTSIDE ACTIVITY AREA:	5280'±
PUBLIC ROAD:	170'± SW
ABOVE GROUND UTILITY:	261'± SW
RAILROAD:	5280'±
PROPERTY LINE: IN PROD. FAC.	5'± S

IMPROVEMENTS

(MEASURED FROM PROPOSED
70 RANCH 10-8-4L WELL LOCATION)

1. FLOWLINE DITCH:	429'± NW 377'± SE 559'± SW
2. BURIED GAS LINE:	468'± NW 653'± NW 583'± SW 1025'± W
3. DETENTION POND:	780'± NW
4. PRODUCTION EQUIP:	687'± N
5. WELL ACCESS RD.:	722'± N 1081'± SW
6. IRRIG. DITCH:	768'± NE
7. OIL/GAS WELL:	905'± NE
8. CULVERT:	377'± SE
9. WIRE FENCE:	602'± SW 701'± SW 1038'± W
10. HWY 34:	631'± SW
11. O.H. UTILITY:	722'± SW
12. LAUNCHER:	937'± W

