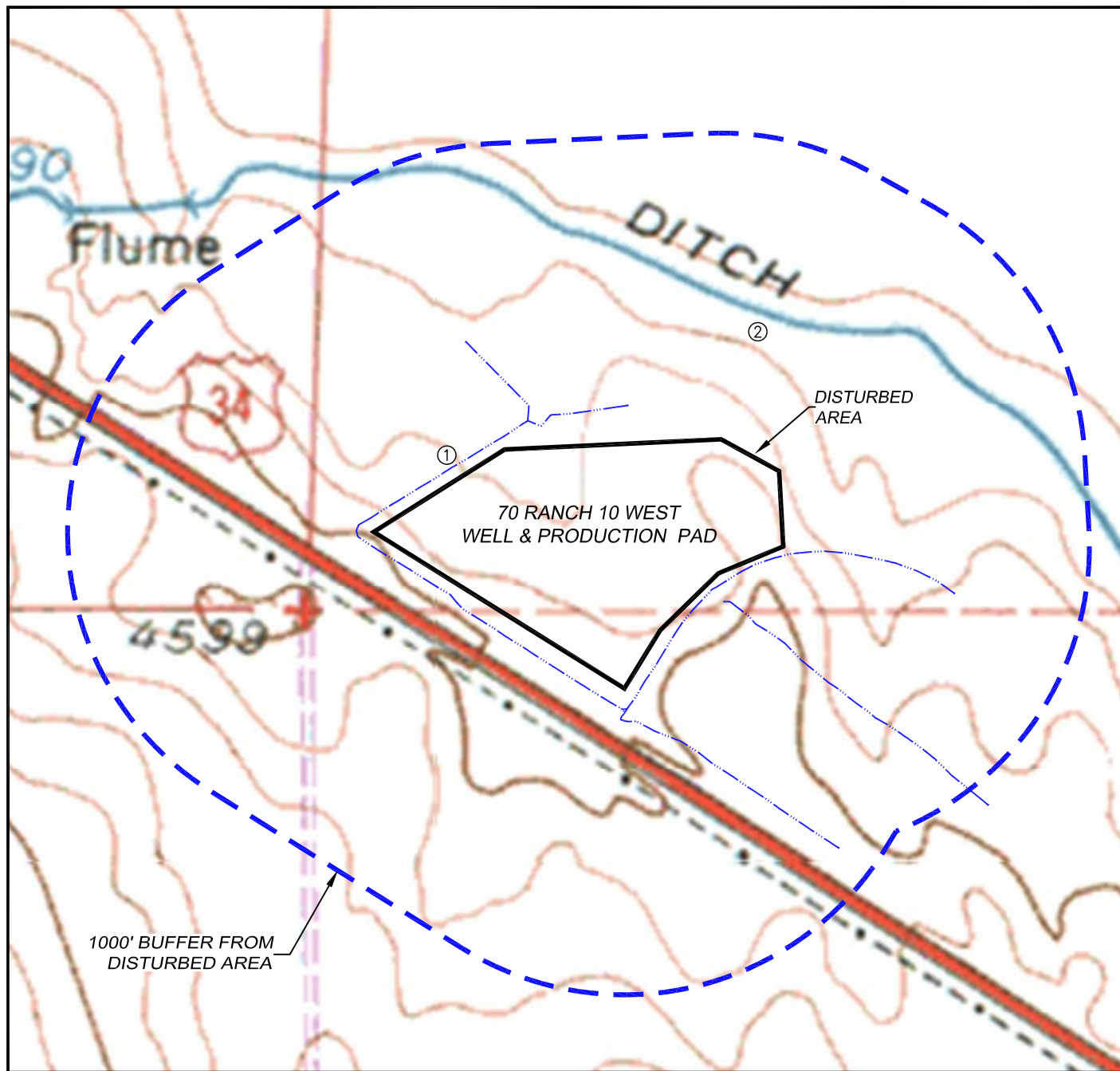


HYDROLOGY MAP

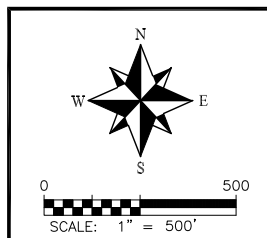
70 RANCH 10 WEST WELL AND PRODUCTION PAD

SECTION 3, TOWNSHIP 4 NORTH, RANGE 63 WEST OF THE 6TH P.M.



SURFACE WATER
(MEASURED FROM THE CLOSEST EDGE OF DISTURBED AREA)

- 1. DITCH: 31'± NW
 30'± SE
 56'± SW
- 2. IRRIG. DITCH: 437'± NE



Confluence RESOURCES

DALEY LAND SURVEYING, INC.
PARKER, COLORADO
303.953.9841