

# Inspection Photos

06/19/2018

Operator: CASCADE PETROLEUM LLC - 10414

Location ID: 439341

Inspection Doc. Number: 682503518

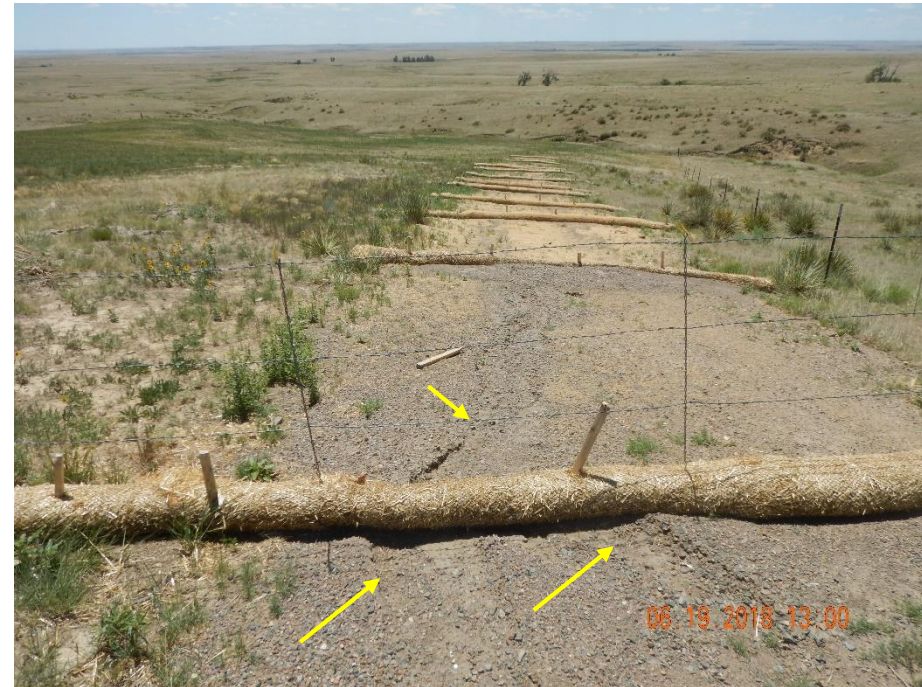
Lincoln County, CO

Aaron Trujillo  
NE Reclamation Specialist  
COGCC

Inspection Photos  
Operator: CASCADE PETROLEUM LLC - 10414  
Location ID: 439341



**Photo 1:** Photo of sign at location entrance.



**Photo 2:** Photo taken from the location entrance, facing south. Photo shows straw wattles have been installed on location. Photo shows wattles do not appear to have been installed in accordance to good engineering practices, and have not been entrenched and backfilled; wattles have been placed directly upon the soil surface. As a result, stormwater erosion and degradation has continued on the location, and is cutting beneath the new wattles (yellow arrow).





**Photo 3:** Photo taken from the entrance of the location. Photo shows stormwater erosion is now occurring at entrance.



**Photo 4:** Photo taken from the northwest end of the location, facing north. Photo shows straw wattles have been installed on location. Photo shows wattles do not appear to have been installed in accordance to good engineering practices, and have not been entrenched and backfilled; wattles have been placed directly upon the soil surface. As a result, stormwater erosion and degradation has continued on the location, and is cutting beneath the new wattles (yellow arrow). Photo also shows gravel has not been removed from the western end of the pad as indicated by the FIRR.





**Photo 5:** Photo taken from the northwest end of the location. See comments under photo 4.



**Photo 6:** Photo taken from the northwest end of the location. See comments under photo 4.



Inspection Photos  
Operator: CASCADE PETROLEUM LLC - 10414  
Location ID: 439341



**Photo 7:** Photo taken from the south end of the location, facing south. See comments under photo 4.



**Photo 8:** Photo taken from the south end of the location, facing north. See comments under photo 4.





**Photo 9:** Photo taken from the south end of the location facing south. Photo of stormwater sediment deposition. Photo also shows newer straw wattle in disrepair.



**Photo 10:** Photo taken from the south end of the location facing south. Photo shows straw wattles have been installed on location. Photo shows wattles do not appear to have been installed in accordance to good engineering practices, and have not been entrenched and backfilled; wattles have been placed directly upon the soil surface. As a result, stormwater erosion and degradation has continued on the location, and is cutting beneath the new wattles (yellow arrow).



Inspection Photos  
Operator: CASCADE PETROLEUM LLC - 10414  
Location ID: 439341



**Photo 11:** Photo taken from the south end of the location, facing southeast. Photo of straw wattle in disrepair.



**Photo 12:** Photo taken from the south end of the location, facing north. Photo shows straw wattle BMP in disrepair, and stormwater erosion degradation.



Inspection Photos  
Operator: CASCADE PETROLEUM LLC - 10414  
Location ID: 439341



**Photo 13:** Photo taken from the southern perimeter of the location. See comments under photo 10.



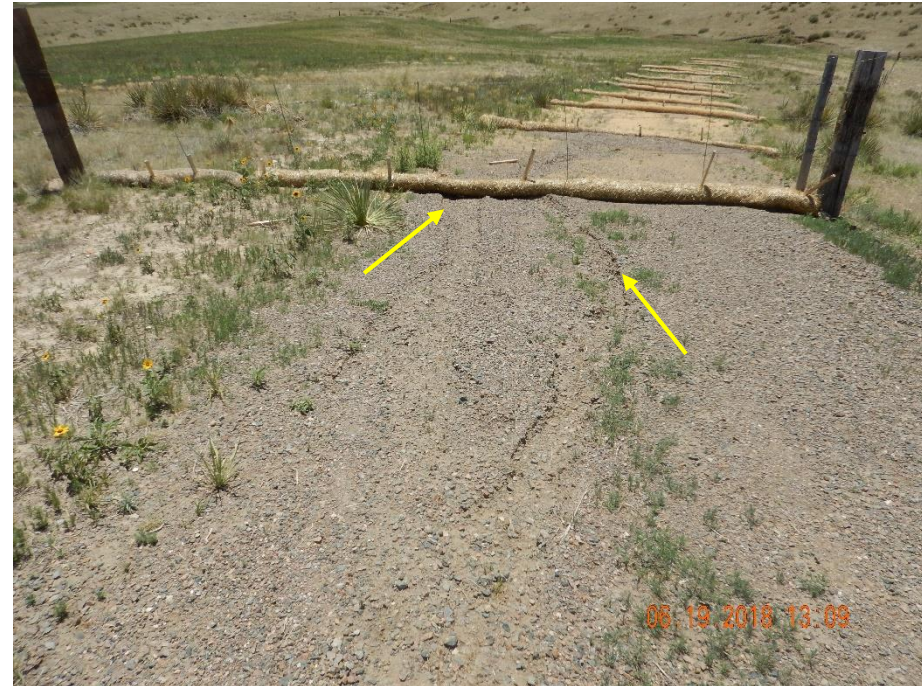
**Photo 14:** Photo taken from the west end of the location, facing north. See comments under photo 10.



Inspection Photos  
Operator: CASCADE PETROLEUM LLC - 10414  
Location ID: 439341



**Photo 15:** Photo taken from the northwest end of the location, facing south. See comments under photo 10.



**Photo 16:** Photo taken from the northwest end of the location, facing south. See comments under photo 10. Photo also shows erosion degradation along access road, and that access road has not been reclaimed.



Inspection Photos  
Operator: CASCADE PETROLEUM LLC - 10414  
Location ID: 439341



**Photo 17:** Photo taken from the access road, north of the location, facing south. Photo shows erosion degradation along access road, and that access road has not been reclaimed.



**Photo 18:** Photo taken from the access road, north of the location, facing south. Photo shows erosion degradation along access road, and that access road has not been reclaimed.



Inspection Photos  
Operator: CASCADE PETROLEUM LLC - 10414  
Location ID: 439341



**Photo 19:** Photo taken from the access road, facing north. Photo shows access road has not been reclaimed.



**Photo 20:** Photo taken from the access road entrance, facing south. Photo shows access road has not been reclaimed.