

**T2N, R66W**

NW. COR.  
SEC. 19, T2N, R66W  
FOUND 2" ALUM. CAP  
ILLEGIBLE

S 88°57'53" W 2771.80' (M)

N. 1/4 COR.  
SEC. 19, T2N, R66W  
FOUND 3 1/4" ALUM. CAP  
W.C. 300' EAST OF  
TRUE COR. POSITION  
L.S. NO. 38106

S 88°57'24" W 2639.35' (M)

NE. COR.  
SEC. 19, T2N, R66W  
FOUND 2 1/2" ALUM. CAP  
P.L.S. NO. 25375

N 00°06'13" W 2610.67' (M)

NO. 2

NO. 1

N 00°20'29" W 2626.49' (M)

19

S 89°17'37" W 2782.48' (M)

CENTER 1/4 COR.  
SEC. 19, T2N, R66W  
FOUND 2" ALUM. CAP  
L.S. NO. 25937

S 89°17'00" W 1319.35' (M)

S 89°18'56" W 1319.27' (C)

CE. 1/16 COR.  
SEC. 19, T2N, R66W  
FOUND 3 1/4" ALUM. CAP  
L.S. NO. 4392

N 00°05'34" W 1305.27' (M)

S. 1/16 COR.  
SEC. 19, T2N, R66W &  
SEC. 24, T2N, R67W  
FOUND 3 1/4" ALUM. CAP  
L.S. NO. 27269

NO. 2

NO. 1

N 00°06'27" W 1305.24' (M)

SURFACE LOCATION: NAD 83  
GROUND ELEVATION= 4876.1'  
LATITUDE= 40.117677°  
LONGITUDE= -104.813969°  
LATITUDE= 40°07'03.639"  
LONGITUDE= -104°48'50.288"  
HEEL LOCATION: NAD 83  
LATITUDE= 40.117936°  
LONGITUDE= -104.813298°  
LATITUDE= 40°07'04.571"  
LONGITUDE= -104°48'47.872"  
BOTTOM HOLE LOCATION: NAD 83  
LATITUDE= 40.087910°  
LONGITUDE= -104.813318°  
LATITUDE= 40°05'16.476"  
LONGITUDE= -104°48'47.945"

CASTLE PINES  
19-14HZ

SURFACE LOCATION

HEEL LOCATION

483'

578'

755'

943'

N 00°19'45" W 2627.28' (M)

N 00°19'33" W 2642.48' (C)

SW. COR.  
SEC. 19, T2N, R66W  
FOUND 2" ALUM. CAP  
L.S. NO. 25937

S 89°38'22" W 2792.87' (M)

S. 1/4 COR.  
SEC. 19, T2N, R66W  
FOUND 2" ALUM. CAP  
L.S. NO. 25937

S 89°36'22" W 1318.94' (M)

E. 1/16 COR.  
SECS. 19 & 30, T2N, R66W  
FOUND 2" ALUM. CAP  
L.S. NO. 25937

S 89°39'11" W 1319.47' (M)

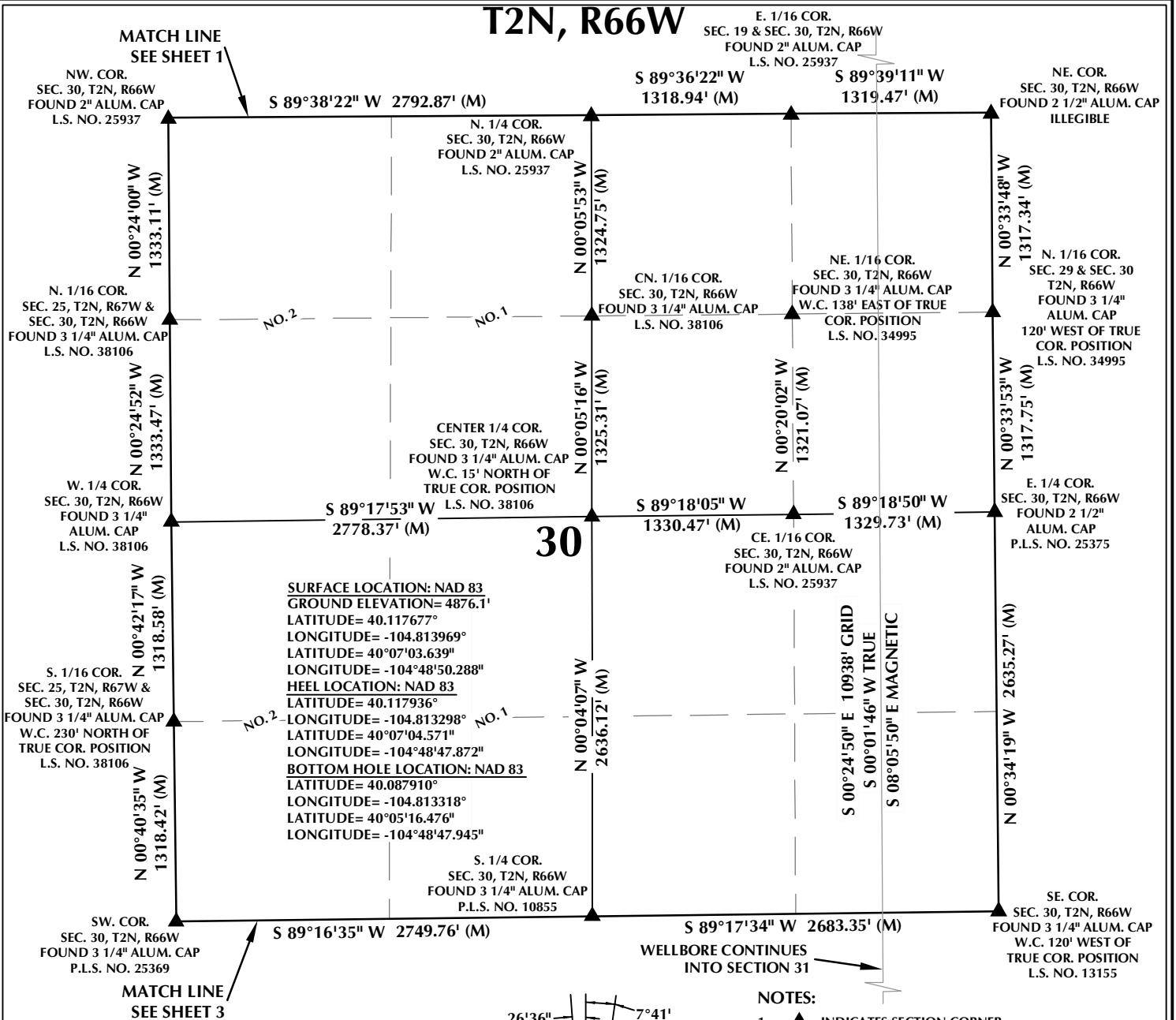
SE. COR.  
SEC. 19, T2N, R66W  
FOUND 2 1/2" ALUM. CAP  
ILLEGIBLE

MATCH LINE  
SEE SHEET 2

NOTES:  
WELLBORE CONTINUES  
INTO SECTION 30

DRAFTED BY: LMO	CHECKED BY: RKF	SHEET NO: <b>1</b> 1 OF 3
DATE DRAFTED: 3/15/18	DATE SURVEYED: 1/5/18	
REVISED:	FILE NAME: 16-175	

# T2N, R66W

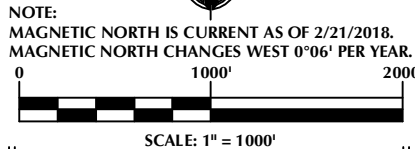


## CERTIFICATE OF SURVEYOR:

THIS IS TO CERTIFY THAT THE ABOVE PLAT WAS PREPARED FROM FIELD NOTES OF ACTUAL SURVEYS MADE BY ME OR UNDER MY SUPERVISION AND THAT THE SAME ARE TRUE AND CORRECT TO THE BEST OF MY KNOWLEDGE AND BELIEF. THIS CERTIFICATE DOES NOT REPRESENT A LAND SURVEY PLAT OR IMPROVEMENT SURVEY PLAT AS DEFINED BY C.R.S. 38-5-102 AND CANNOT BE RELIED UPON TO DETERMINE OWNERSHIP.

*Randall K. French*  
 RANDALL K. FRENCH  
 PROFESSIONAL LAND SURVEYOR  
 COLORADO REGISTRATION NUMBER 38512  
 3/15/18

NOTICE:  
 ACCORDING TO COLORADO STATE LAW YOU MUST COME TO COURT AND TAKE LEGAL ACTION BASED UPON ANY DEFECT IN THIS SURVEY WITHIN THREE YEARS AFTER YOU FIRST DISCOVER SUCH DEFECT. IN NO EVENT MAY ANY ACTION BASED UPON ANY DEFECT IN THIS SURVEY BE COMMENCED MORE THAN TEN YEARS FROM THE DATE ON THE CERTIFICATION SHOWN HEREON.



## NOTES:

- ▲ INDICATES SECTION CORNER.
- INDICATES CALCULATED CORNER.
- ELEVATION BASED ON NAVD88 (GEOID12B).
- BASIS OF BEARING DERIVED FROM COLORADO COORDINATE SYSTEM OF 1983 NORTH ZONE.
- ALL MEASURED DISTANCES ARE GRID.  
 COMBINED SCALE FACTOR: .99973013 CALCULATED FROM THE W. 1/4 CORNER OF SECTION 18, T2N, R66W.  
 OPERATOR: PRESTON KNUTSEN / PDOP = 1.5.
- SEE ADDENDUM TO WELL LOCATION CERTIFICATE FOR EXISTING IMPROVEMENTS WITHIN 500' OF THE WELL PAD.
- WELL FOOTAGES ARE MEASURED AT RIGHT ANGLES TO THE SECTION LINES.
- THE BOTTOM OF HOLE BEARS S00°24'50"E, 10938' FROM THE HEEL LOCATION.
- NO. 1 & NO. 2 AS SHOWN HEREON ARE GOVERNMENT LOTS 1 & 2 PER THE ORIGINAL GLO SURVEY.

## WELL PAD - CASTLE PINES 16-19HZ

CASTLE PINES 19-14HZ  
 WELL LOCATION CERTIFICATE  
 483' FSL & 943' FEL SESE (SURFACE)  
 578' FSL & 755' FEL SESE (HEEL)  
 LOCATED IN SECTION 19  
 202' FSL & 780' FEL SESE (BOTTOM)  
 LOCATED IN SECTION 31  
 T2N, R66W, 6TH P.M.  
 WELD COUNTY, COLORADO

**Kerr-McGee Oil &  
 Gas Onshore L.P.**  
 1099 18th Street  
 Denver, Colorado 80202



## CONSULTING, LLC

SHERIDAN OFFICE  
 1095 Saberton Avenue  
 Sheridan, Wyoming 82801  
 Phone 307-674-0609

LOVELAND OFFICE  
 1635 Foxtrail Drive, Suite 204  
 Loveland, Colorado 80538  
 Phone 970-776-4331

DRAFTED BY:	LMO	CHECKED BY:	RKF	SHEET NO:
DATE DRAFTED:	3/15/18	DATE SURVEYED:	1/5/18	2
REVISED:		FILE NAME:	16-175	2 OF 3

**T2N, R66W**

**31**

**Match Line**  
SEE SHEET 2

**NE. COR.**  
SEC. 31, T2N, R66W  
FOUND 3 1/4" ALUM. CAP  
W.C. 120' WEST OF  
TRUE COR. POSITION  
L.S. NO. 13155

**E. 1/4 COR.**  
SEC. 31, T2N, R66W  
SET 2 1/2" ALUM. CAP  
200' EAST OF TRUE  
COR. POSITION  
P.L.S. NO. 38512

**SE. COR.**  
SEC. 31, T2N, R66W  
FOUND 3 1/4" ALUM. CAP  
P.L.S. NO. 17669

**SW. COR.**  
SEC. 31, T2N, R66W  
FOUND 3 1/4" ALUM. CAP  
P.L.S. NO. 10855

**W. 1/4 COR.**  
SEC. 31, T2N, R66W  
FOUND 3 1/4" ALUM. CAP  
ILLEGIBLE

**N. 1/4 COR.**  
SEC. 31, T2N, R66W  
FOUND 3 1/4" ALUM. CAP  
P.L.S. NO. 10855

**S. 1/4 COR.**  
SEC. 31, T2N, R66W  
FOUND 2 1/2" ALUM. CAP  
W.C. 280' EAST OF  
TRUE COR. POSITION  
L.S. NO. 34980

**SW. 1/16 COR.**  
SEC. 31, T2N, R66W  
FOUND 2" ALUM. CAP  
L.S. NO. 18475

**W. 1/16 COR.**  
SEC. 6, T1N, R66W &  
SEC. 31, T2N R66W  
FOUND 2" ALUM. CAP  
L.S. NO. 25937

**LOT 1**

**LOT 2**

**Surface Location: NAD 83**  
GROUND ELEVATION= 4876.1'  
LATITUDE= 40.117677°  
LONGITUDE= -104.813969°  
LATITUDE= 40°07'03.639"  
LONGITUDE= -104°48'50.288"  
**HEEL LOCATION: NAD 83**  
LATITUDE= 40.117936°  
LONGITUDE= -104.813298°  
LATITUDE= 40°07'04.571"  
LONGITUDE= -104°48'47.872"  
**BOTTOM HOLE LOCATION: NAD 83**  
LATITUDE= 40.087910°  
LONGITUDE= -104.813318°  
LATITUDE= 40°05'16.476"  
LONGITUDE= -104°48'47.945"

**Bottom of Hole:**  
202' FSL & 780' FEL

**Notes:**

**Match Line**  
SEE SHEET 2

**CERTIFICATE OF SURVEYOR:**

THIS IS TO CERTIFY THAT THE ABOVE PLAT WAS PREPARED FROM FIELD NOTES OF ACTUAL SURVEYS MADE BY ME OR UNDER MY SUPERVISION AND THAT THE SAME ARE TRUE AND CORRECT TO THE BEST OF MY KNOWLEDGE AND BELIEF. THIS CERTIFICATE DOES NOT REPRESENT A LAND SURVEY PLAT OR IMPROVEMENT SURVEY PLAT AS DEFINED BY C.S. 5-102 AND CANNOT BE RELIED UPON TO DETERMINE OWNERSHIP.

*Randall K. French*  
 RANDALL K. FRENCH  
 PROFESSIONAL LAND SURVEYOR  
 COLORADO REGISTRATION NUMBER 38512  
 3/15/18

**NOTICE:** ACCORDING TO COLORADO STATE LAW YOU MUST COMMENCE A LEGAL ACTION BASED UPON ANY DEFECT IN THIS SURVEY WITHIN THREE YEARS AFTER YOU FIRST DISCOVER SUCH DEFECT. IN NO EVENT MAY ANY ACTION BASED UPON ANY DEFECT IN THIS SURVEY BE COMMENCED MORE THAN TEN YEARS FROM THE DATE ON THE CERTIFICATION SHOWN HEREON.

## WELL PAD - CASTLE PINES 16-19HZ

CASTLE PINES 19-14HZ  
WELL LOCATION CERTIFICATE  
483' FSL & 943' FEL SESE (SURFACE)  
578' FSL & 755' FEL SESE (HEEL)  
LOCATED IN SECTION 19  
202' FSL & 780' FEL SESE (BOTTOM)  
LOCATED IN SECTION 31  
T2N, R66W, 6TH P.M.  
WELD COUNTY, COLORADO

**Kerr-McGee Oil &  
Gas Onshore L.P.**  
1099 18th Street  
Denver, Colorado 80202



**CONSULTING, LLC**

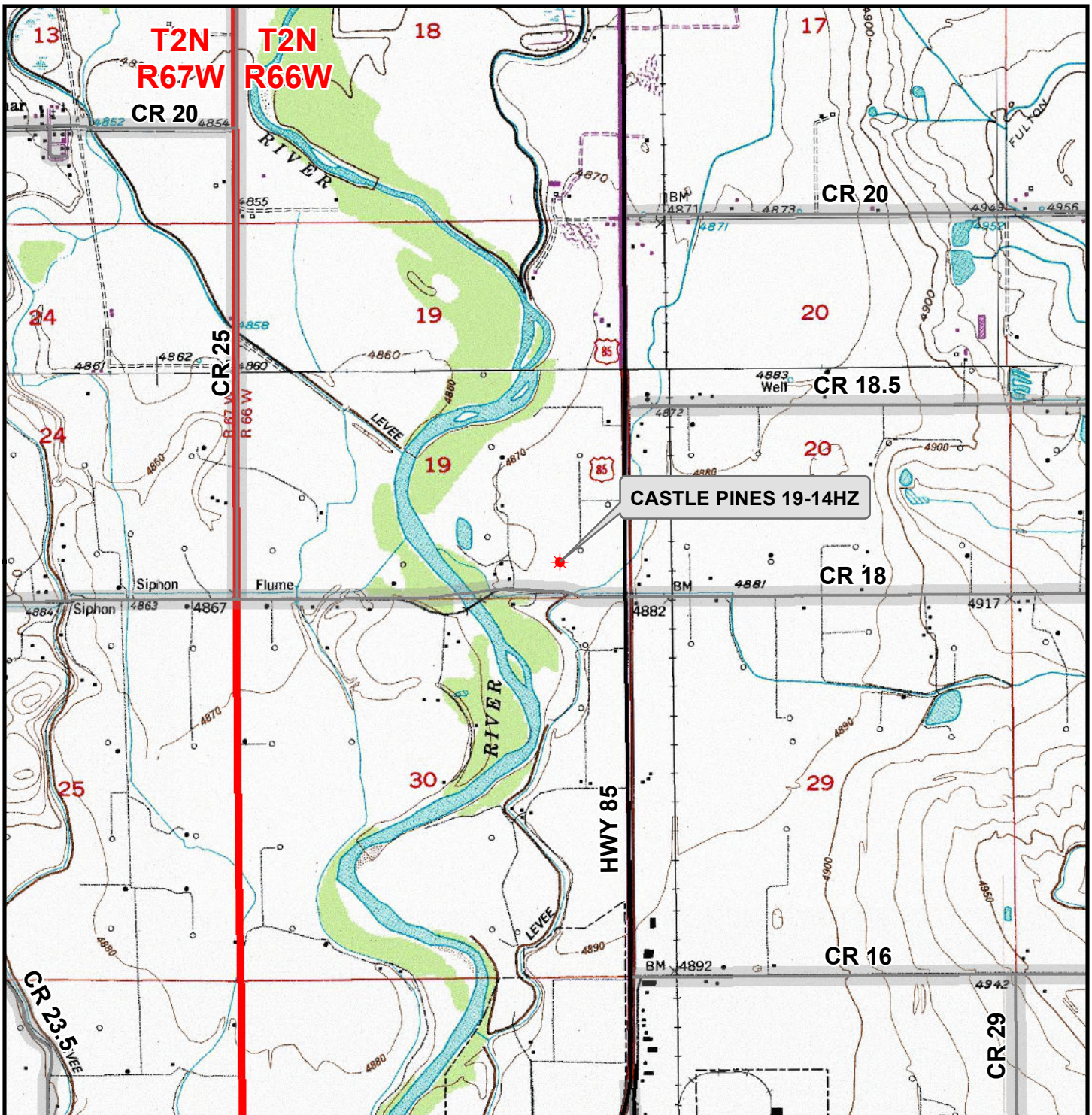
**SHERIDAN OFFICE**  
1095 Saberton Avenue  
Sheridan, Wyoming 82801  
Phone 307-674-0609

**LOVELAND OFFICE**  
1635 Foxtrail Drive, Suite 204  
Loveland, Colorado 80538  
Phone 970-776-4331

DRAFTED BY: LMO	CHECKED BY: RKF	SHEET NO: <div style="font-size: 2em; font-weight: bold;">3</div> 3 OF 3
DATE DRAFTED: 3/15/18	DATE SURVEYED: 1/5/18	
REVISED:	FILE NAME: 16-175	



K:\ANADARKO\2016\2016\_175\_CASTLE\_PINES\_T2N\_R66W\_SEC\_19\GIS\Maps\_ABC\Castle Pines 16-19HZ\Castle Pines 19-14HZ.mxd 3/15/2018 8:48:25 AM



### Legend

- ★ Well - Fee - Proposed    === Road - Primitive - Existing    — Road - County - Existing  
— Road - Improved - Existing    — Road - Highway - Existing

### WELL PAD - CASTLE PINES 16-19HZ

GENERAL LOCATION MAP  
CASTLE PINES 19-14HZ  
LOCATED IN SECTION 19  
T2N, R66W, 6th P.M.  
WELD COUNTY, COLORADO

### Kerr-McGee Oil & Gas Onshore L.P.

1099 18th Street  
Denver, Colorado 80202



### CONSULTING, LLC

SHERIDAN OFFICE  
1095 Saberton Avenue  
Sheridan, Wyoming 82801  
Phone 307-674-0609

LOVELAND OFFICE  
1635 Foxtail Drive, Suite 204  
Loveland, Colorado 80538  
Phone 970-776-4331



SCALE: 1" = 2,000ft

NAD83 CO-Nft

DRAWN: DP

DATE: 16 Mar 2018

REVISED:

DATE: