



Kerr-McGee Oil & Gas Onshore LP

A subsidiary of Anadarko Petroleum Corporation

1099 18th Street
Denver, CO 80202
720-929-6000

June 8, 2018

Julie Murphy
Director, Colorado Oil and Gas Conservation Commission
Department of Natural Resources
The Chancery Building
1120 Lincoln Street, Suite 801
Denver, CO 80203

Re: 30 Day Certification Letter - 318A.e

Castle Pines 19-5HZ (Doc No. 401627430)
Township 2 North, Range 66 West
Section 19: SESE
Unit Acreage: 360 Acres
Proposed Spacing Unit:
02N66W: SEC 07: SWSE;
02N66W: SEC 18: W2E2;
02N66W: SEC 19: W2E2
Weld County, Colorado

Dear Director Murphy:

Kerr-McGee Oil and Gas Onshore LP ("KMG") hereby certifies that a thirty (30) day notice has been given by certified mail to all mineral owners in the proposed wellbore spacing unit. We have not received any objections to this spacing unit or location. KMG hereby respectfully requests approval of this well.

If you have any questions or issues regarding this permit, please contact me at (720) 929-6092.

Sincerely,

Kerr-McGee Oil and Gas Onshore LP

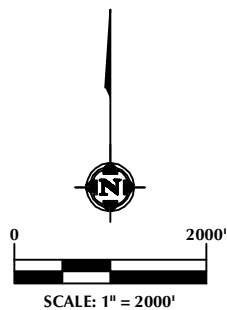
A handwritten signature in blue ink, appearing to read 'Craig Richardson'.

Craig Richardson
Regulatory Analyst

DISTANCE FROM COMPLETED
PORTION OF WELLBORE TO
NEAREST UNIT BOUNDARY= 508'

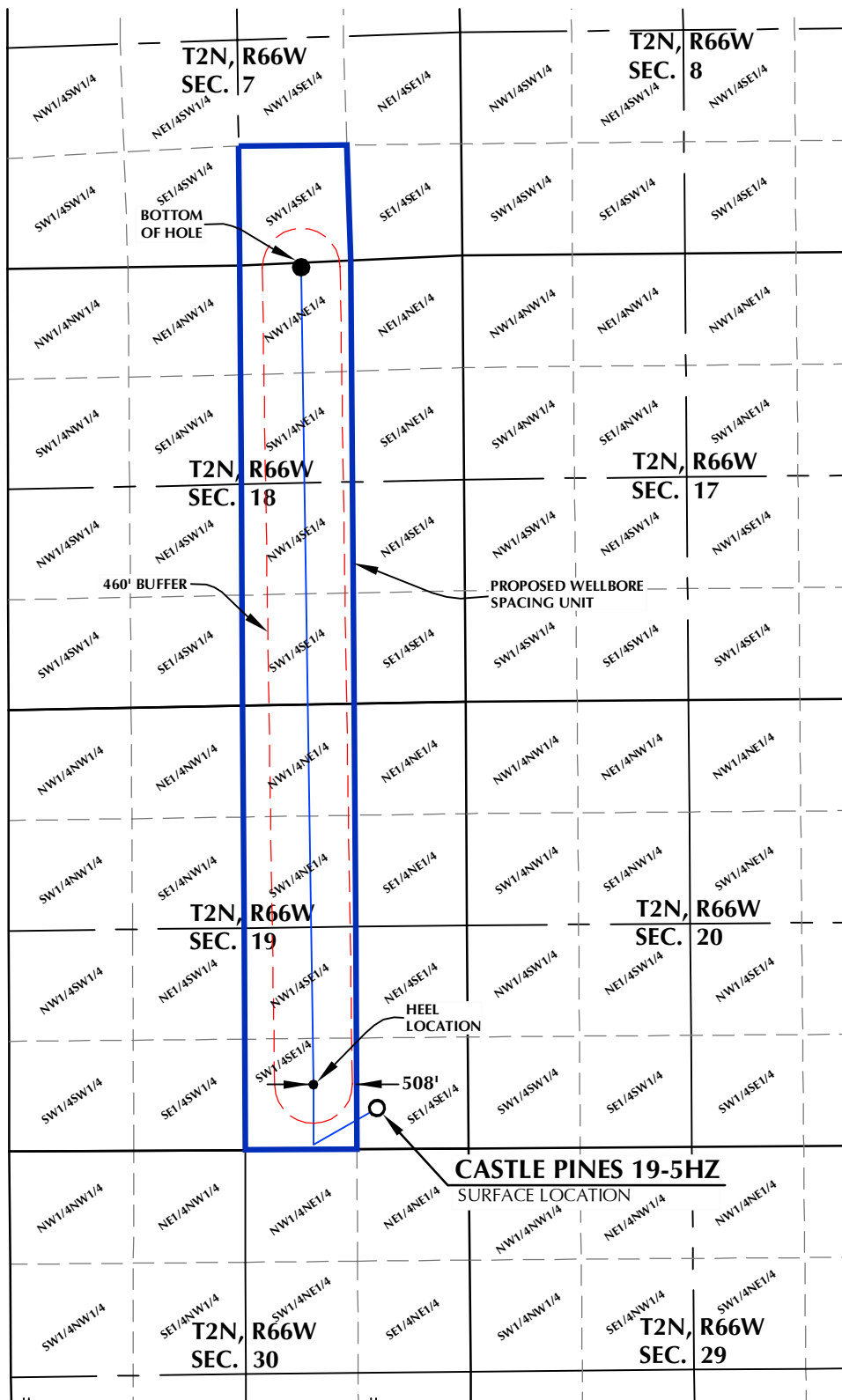
CASTLE PINES 19-5HZ WELLBORE SPACING UNIT

SURFACE LOCATION: NAD 83
GROUND ELEVATION= 4874.6'
LATITUDE= 40.117680°
LONGITUDE= -104.814452°
LATITUDE= 40°07'03.649"
LONGITUDE= -104°48'52.026"
HEEL LOCATION: NAD 83
LATITUDE= 40.118462°
LONGITUDE= -104.817129°
LATITUDE= 40°07'06.462"
LONGITUDE= -104°49'01.666"
BOTTOM HOLE LOCATION: NAD 83
LATITUDE= 40.145006°
LONGITUDE= -104.817384°
LATITUDE= 40°08'42.022"
LONGITUDE= -104°49'02.582"



NOTES:

1. DRAWING LATITUDE AND LONGITUDE COORDINATES ARE NAD 83 (2011)(EPOCH:2010).
2. ELEVATION BASED ON NAVD88 (GEOID12B).
3. BASIS OF BEARING DERIVED FROM COLORADO COORDINATE SYSTEM OF 1983 NORTH ZONE.
4. ALL MEASURED DISTANCES ARE GRID. COMBINED SCALE FACTOR: .99973013 CALCULATED FROM THE W. 1/4 CORNER OF SECTION 18, T2N, R66W.



WELL PAD - CASTLE PINES 16-19HZ

CASTLE PINES 19-5HZ
WELLBORE SPACING UNIT
484' FSL & 1078' FEL SESE (SURFACE)
768' FSL & 1827' FEL SWSE (HEEL)
LOCATED IN SECTION 19
52' FNL & 1908' FEL NWNE (BOTTOM)
LOCATED IN SECTION 18
T2N, R66W, 6TH P.M.
WELD COUNTY, COLORADO

**Kerr-McGee Oil &
Gas Onshore L.P.**
1099 18th Street
Denver, Colorado 80202



CONSULTING, LLC

SHERIDAN OFFICE
1095 Saberton Avenue
Sheridan, Wyoming 82801
Phone 307-674-0609

LOVELAND OFFICE
1635 Foxtrail Drive, Suite 204
Loveland, Colorado 80538
Phone 970-776-4331

DRAFTED BY:	LMO	CHECKED BY:	RKF
DATE DRAFTED:	3/15/18	DATE SURVEYED:	1/5/18
REVISED:		FILE NAME:	16-175