

T2N, R66W

MATCH LINE
SEE SHEET 2

WELLBORE CONTINUES
INTO SECTION 18

NW. COR.
SEC. 19, T2N, R66W
FOUND 2" ALUM. CAP
ILLEGIBLE

S 88°57'53" W 2771.80' (M)

S 88°57'24" W 2639.35' (M)

NE. COR.
SEC. 19, T2N, R66W
FOUND 2 1/2" ALUM. CAP
P.L.S. NO. 25375

N. 1/4 COR.
SEC. 19, T2N, R66W
FOUND 3 1/4" ALUM. CAP
W.C. 300' EAST OF
TRUE COR. POSITION
L.S. NO. 38106

N 00°06'13" W 2610.67' (M)

NO. 2

NO. 1

N 00°20'29" W
2626.49' (M)

N 00°51'47" W 9670' GRID
N 00°25'12" W TRUE
N 08°32'47" W MAGNETIC

N 00°19'43" W 2642.28' (C)

19

W. 1/4 COR.
SEC. 19, T2N, R66W
FOUND 2 1/2" ALUM. CAP
L.S. NO. 16847

S 89°17'37" W
2782.48' (M)

S 89°17'00" W
1319.35' (M)

S 89°18'56" W
1319.27' (C)

CENTER 1/4 COR.
SEC. 19, T2N, R66W
FOUND 2" ALUM. CAP
L.S. NO. 25937

CE. 1/16 COR.
SEC. 19, T2N, R66W
FOUND 3 1/4" ALUM. CAP
L.S. NO. 4392

SURFACE LOCATION: NAD 83
GROUND ELEVATION= 4874.6'
LATITUDE= 40.117680°
LONGITUDE= -104.814452°
HEEL LOCATION: NAD 83
LATITUDE= 40.118462°
LONGITUDE= -104.48'52.026"
BOTTOM HOLE LOCATION: NAD 83
LATITUDE= 40.145006°
LONGITUDE= -104.817384°
LATITUDE= 40°08'42.022"
LONGITUDE= -104°49'02.582"

CASTLE PINES
19-5HZ
SURFACE LOCATION

S. 1/16 COR.
SEC. 19, T2N, R66W &
SEC. 24, T2N, R67W
FOUND 3 1/4" ALUM. CAP
L.S. NO. 27269

N 00°05'34" W
1305.27' (M)

NO. 2

NO. 1

N 00°19'45" W
2627.28' (M)

HEEL LOCATION
768'
1827'
1078'
484'

N 00°19'33" W 2642.48' (C)

SW. COR.
SEC. 19, T2N, R66W
FOUND 2" ALUM. CAP
L.S. NO. 25937

S 89°38'22" W 2792.87' (M)

S. 1/4 COR.
SEC. 19, T2N, R66W
FOUND 2" ALUM. CAP
L.S. NO. 25937

S 89°36'22" W
1318.94' (M)

E. 1/16 COR.
SECS. 19 & 30, T2N, R66W
FOUND 2" ALUM. CAP
L.S. NO. 25937

SE. COR.
SEC. 19, T2N, R66W
FOUND 2 1/2" ALUM. CAP
ILLEGIBLE

CERTIFICATE OF SURVEYOR:

THIS IS TO CERTIFY THAT THE ABOVE PLAT WAS PREPARED FROM FIELD NOTES OF ACTUAL SURVEYS MADE BY ME OR UNDER MY SUPERVISION AND THAT THE SAME ARE TRUE AND CORRECT TO THE BEST OF MY KNOWLEDGE AND BELIEF. THIS CERTIFICATE DOES NOT REPRESENT A LAND SURVEY PLAT OR IMPROVEMENT SURVEY PLAT AS DEFINED BY C.R.S. 38-5-102 AND CANNOT BE RELIED UPON TO DETERMINE OWNERSHIP.

Randall K. French
38512
3/15/18
PROFESSIONAL LAND SURVEYOR

RANDALL K. FRENCH
PROFESSIONAL LAND SURVEYOR
COLORADO REGISTRATION NUMBER 38512

NOTICE:
ACCORDING TO COLORADO STATE LAW YOU MUST COME TO COURT FOR LEGAL ACTION BASED UPON ANY DEFECT IN THIS SURVEY WITHIN THREE YEARS AFTER YOU FIRST DISCOVER SUCH DEFECT. IN NO EVENT MAY ANY ACTION BASED UPON ANY DEFECT IN THIS SURVEY BE COMMENCED MORE THAN TEN YEARS FROM THE DATE ON THE CERTIFICATION SHOWN HEREON.

26'35" 7°41'



NOTE:
MAGNETIC NORTH IS CURRENT AS OF 2/21/2018.
MAGNETIC NORTH CHANGES WEST 0°06' PER YEAR.



SCALE: 1" = 1000'

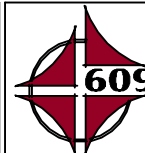
NOTES:

- ▲ INDICATES SECTION CORNER.
- INDICATES CALCULATED CORNER.
- ELEVATION BASED ON NAVD88 (GEOID12B).
- BASIS OF BEARING DERIVED FROM COLORADO COORDINATE SYSTEM OF 1983 NORTH ZONE.
- ALL MEASURED DISTANCES ARE GRID.
COMBINED SCALE FACTOR: .99973013 CALCULATED FROM THE W. 1/4 CORNER OF SECTION 18, T2N, R66W.
OPERATOR: PRESTON KNUSTEN / PDOP = 1.5.
- SEE ADDENDUM TO WELL LOCATION CERTIFICATE FOR EXISTING IMPROVEMENTS WITHIN 500' OF THE WELL PAD.
- WELL FOOTAGES ARE MEASURED AT RIGHT ANGLES TO THE SECTION LINES.
- THE BOTTOM OF HOLE BEARS N00°51'47"W, 9670' FROM THE HEEL LOCATION.
- NO. 1 & NO. 2 AS SHOWN HEREON ARE GOVERNMENT LOTS 1 & 2 PER THE ORIGINAL GLO SURVEY.

WELL PAD - CASTLE PINES 16-19HZ

CASTLE PINES 19-5HZ
WELL LOCATION CERTIFICATE
484' FSL & 1078' FEL SESE (SURFACE)
768' FSL & 1827' FEL SWSE (HEEL)
LOCATED IN SECTION 19
52' FNL & 1908' FEL NWNE (BOTTOM)
LOCATED IN SECTION 18
T2N, R66W, 6TH P.M.
WELD COUNTY, COLORADO

Kerr-McGee Oil &
Gas Onshore L.P.
1099 18th Street
Denver, Colorado 80202



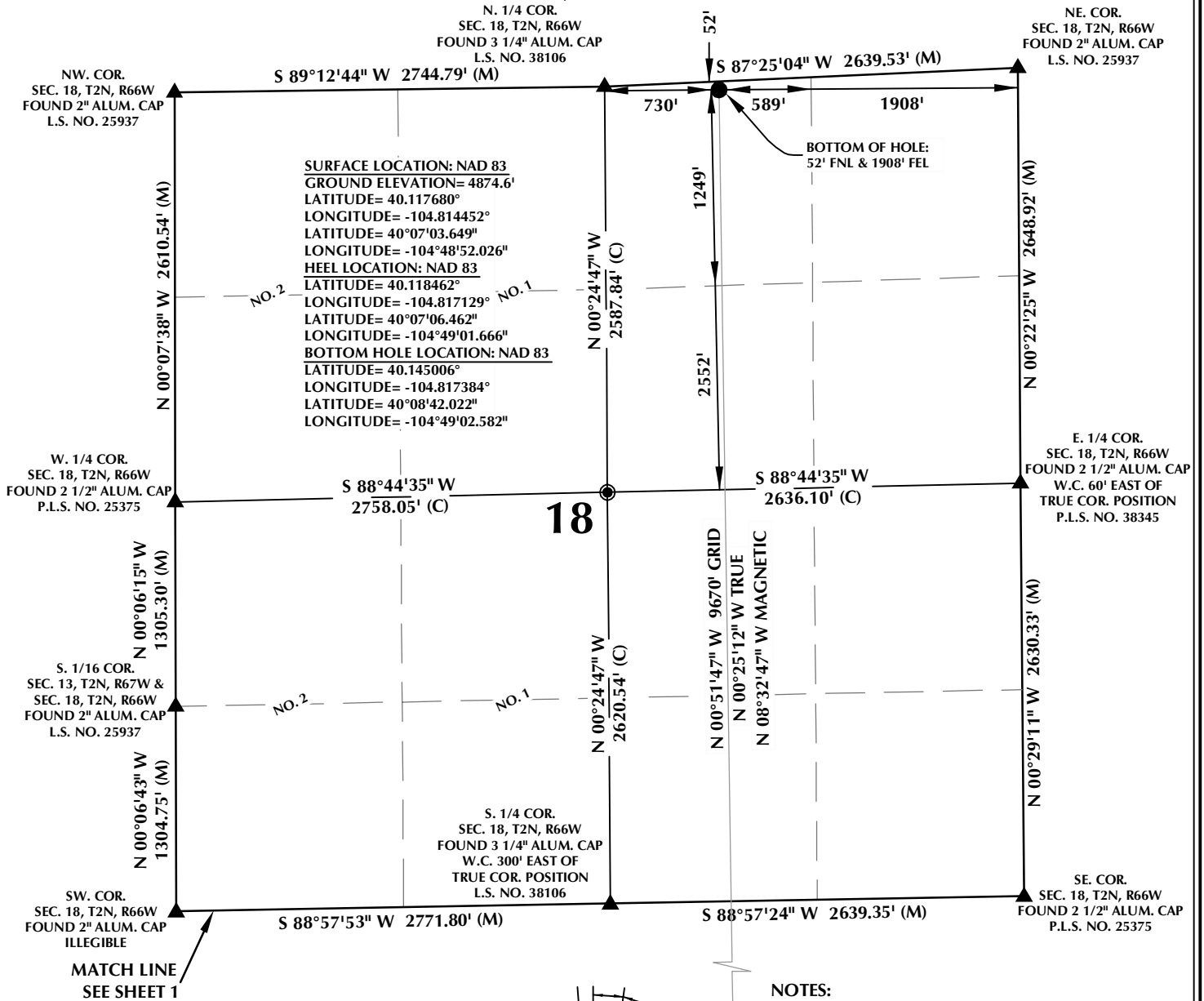
CONSULTING, LLC

SHERIDAN OFFICE
1095 Saberton Avenue
Sheridan, Wyoming 82801
Phone 307-674-0609

LOVELAND OFFICE
1635 Foxtrail Drive, Suite 204
Loveland, Colorado 80538
Phone 970-776-4331

DRAFTED BY:	LMO	CHECKED BY:	RKF	SHEET NO:
DATE DRAFTED:	3/15/18	DATE SURVEYED:	1/5/18	1
REVISED:		FILE NAME:	16-175	1 OF 2

T2N, R66W



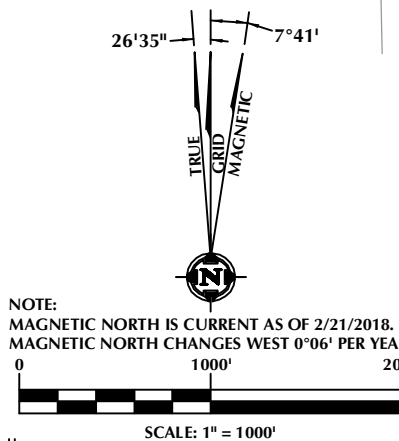
CERTIFICATE OF SURVEYOR:

THIS IS TO CERTIFY THAT THE ABOVE PLAT WAS PREPARED FROM FIELD NOTES OF ACTUAL SURVEYS MADE BY ME OR UNDER MY SUPERVISION AND THAT THE SAME ARE TRUE AND CORRECT TO THE BEST OF MY KNOWLEDGE AND BELIEF. THIS CERTIFICATE DOES NOT REPRESENT A LAND SURVEY PLAT OR IMPROVEMENT SURVEY PLAT AS DEFINED BY C.R.S. 38-5-102 AND CANNOT BE RELIED UPON TO DETERMINE OWNERSHIP.

Randall K. French
 RANDALL K. FRENCH
 PROFESSIONAL LAND SURVEYOR
 COLORADO REGISTRATION NUMBER 38512

3/15/18
 RANDALL K. FRENCH
 PROFESSIONAL LAND SURVEYOR
 COLORADO REGISTRATION NUMBER 38512

NOTICE:
 ACCORDING TO COLORADO STATE LAW YOU MUST COMMENCE A LEGAL ACTION BASED UPON ANY DEFECT IN THIS SURVEY WITHIN THREE YEARS AFTER YOU FIRST DISCOVER SUCH DEFECT. IN NO EVENT MAY ANY ACTION BASED UPON ANY DEFECT IN THIS SURVEY BE COMMENCED MORE THAN TEN YEARS FROM THE DATE ON THE CERTIFICATION SHOWN HEREON.



NOTES:

- ▲ INDICATES SECTION CORNER.
- INDICATES CALCULATED CORNER.
- ELEVATION BASED ON NAVD88 (GEOID12B).
- BASIS OF BEARING DERIVED FROM COLORADO COORDINATE SYSTEM OF 1983 NORTH ZONE.
- ALL MEASURED DISTANCES ARE GRID.
- COMBINED SCALE FACTOR: .99973013 CALCULATED FROM THE W. 1/4 CORNER OF SECTION 18, T2N, R66W.
- OPERATOR: PRESTON KNUTSEN / PDOP = 1.5.
- SEE ADDENDUM TO WELL LOCATION CERTIFICATE FOR EXISTING IMPROVEMENTS WITHIN 500' OF THE WELL PAD.
- WELL FOOTAGES ARE MEASURED AT RIGHT ANGLES TO THE SECTION LINES.
- THE BOTTOM OF HOLE BEARS N00°51'47"W, 9670' FROM THE HEEL LOCATION.
- NO. 1 & NO. 2 AS SHOWN HEREON ARE GOVERNMENT LOTS 1 & 2 PER THE ORIGINAL GLO SURVEY.

WELL PAD - CASTLE PINES 16-19HZ

CASTLE PINES 19-5HZ
 WELL LOCATION CERTIFICATE
 484' FSL & 1078' FEL SESE (SURFACE)
 768' FSL & 1827' FEL SWSE (HEEL)
 LOCATED IN SECTION 19
 52' FNL & 1908' FEL NWNE (BOTTOM)
 LOCATED IN SECTION 18
 T2N, R66W, 6TH P.M.
 WELD COUNTY, COLORADO

**Kerr-McGee Oil &
 Gas Onshore L.P.**
 1099 18th Street
 Denver, Colorado 80202

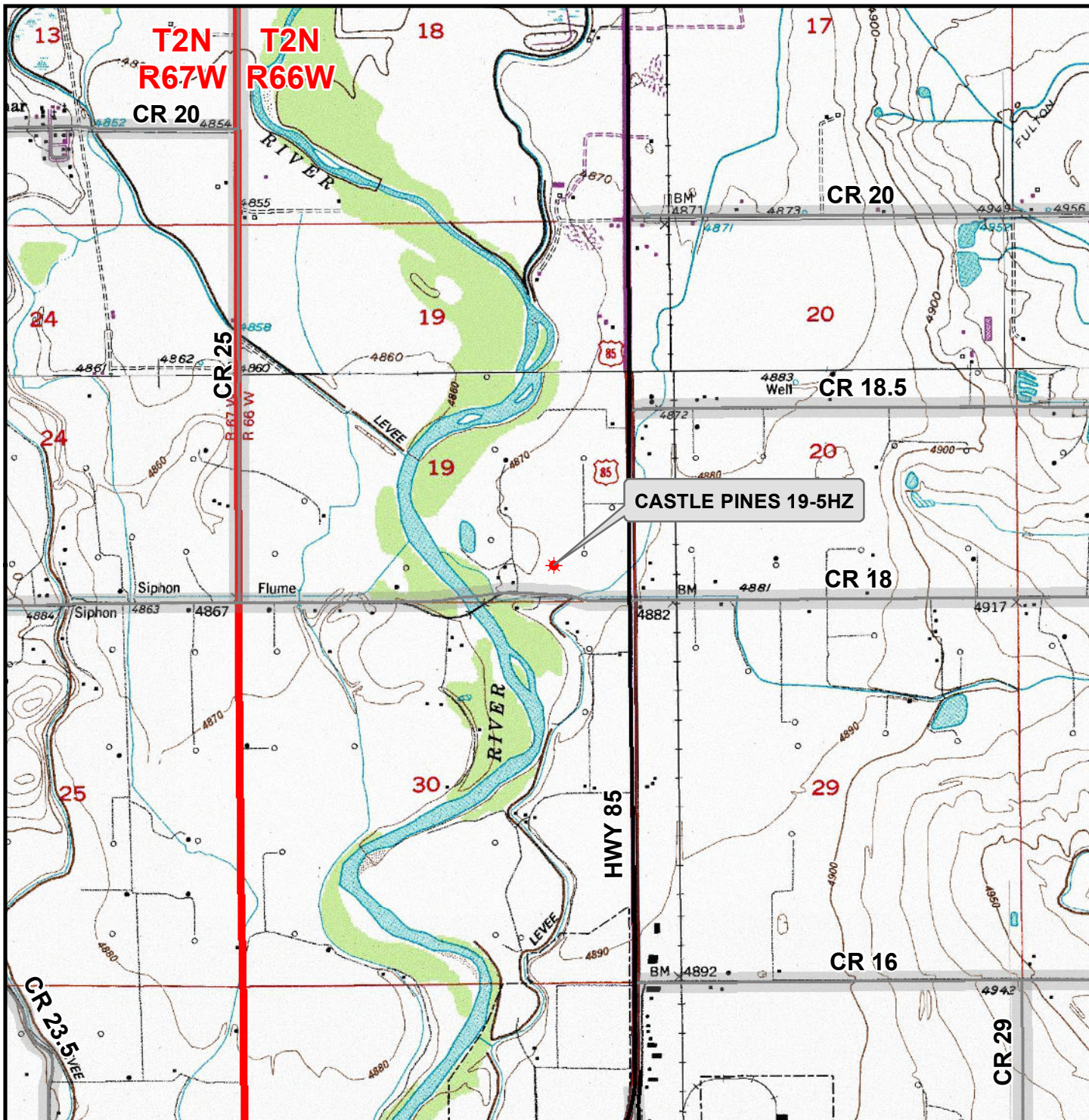


CONSULTING, LLC

SHERIDAN OFFICE
 1095 Saberton Avenue
 Sheridan, Wyoming 82801
 Phone 307-674-0609

LOVELAND OFFICE
 1635 Foxtrail Drive, Suite 204
 Loveland, Colorado 80538
 Phone 970-776-4331

DRAFTED BY:	LMO	CHECKED BY:	RKF	SHEET NO:
DATE DRAFTED:	3/15/18	DATE SURVEYED:	1/5/18	2
REVISED:		FILE NAME:	16-175	2 OF 2



Legend

- ★ Well - Fee - Proposed
- ==== Road - Primitive - Existing
- Road - County - Existing
- Road - Improved - Existing
- Road - Highway - Existing

WELL PAD - CASTLE PINES 16-19HZ

GENERAL LOCATION MAP
CASTLE PINES 19-5HZ
LOCATED IN SECTION 19
T2N, R66W, 6th P.M.
WELD COUNTY, COLORADO

Kerr-McGee Oil & Gas Onshore L.P.

1099 18th Street
 Denver, Colorado 80202



CONSULTING, LLC

SHERIDAN OFFICE
 1095 Saberton Avenue
 Sheridan, Wyoming 82801
 Phone 307-674-0609

LOVELAND OFFICE
 1635 Foxtail Drive, Suite 204
 Loveland, Colorado 80538
 Phone 970-776-4331



SCALE: 1" = 2,000ft

NAD83 CO-Nft

DRAWN: DP

DATE: 16 Mar 2018

REVISED:

DATE: