

T2N, R66W

19

CASTLE PINES 19-18HZ

HEEL LOCATION

WELLBORE CONTINUES INTO SECTION 30

MATCH LINE SEE SHEET 2

NOTES:

Surface Location: NAD 83
Ground Elevation= 4876.2'
Latitude= 40.117676°
Longitude= -104.813754°
Latitude= 40°07'03.634"
Longitude= -104°48'49.516"
Heel Location: NAD 83
Latitude= 40.117934°
Longitude= -104.811617°
Latitude= 40°07'04.563"
Longitude= -104°48'41.822"
Bottom Hole Location: NAD 83
Latitude= 40.087909°
Longitude= -104.811187°
Latitude= 40°05'16.472"
Longitude= -104°48'40.273"

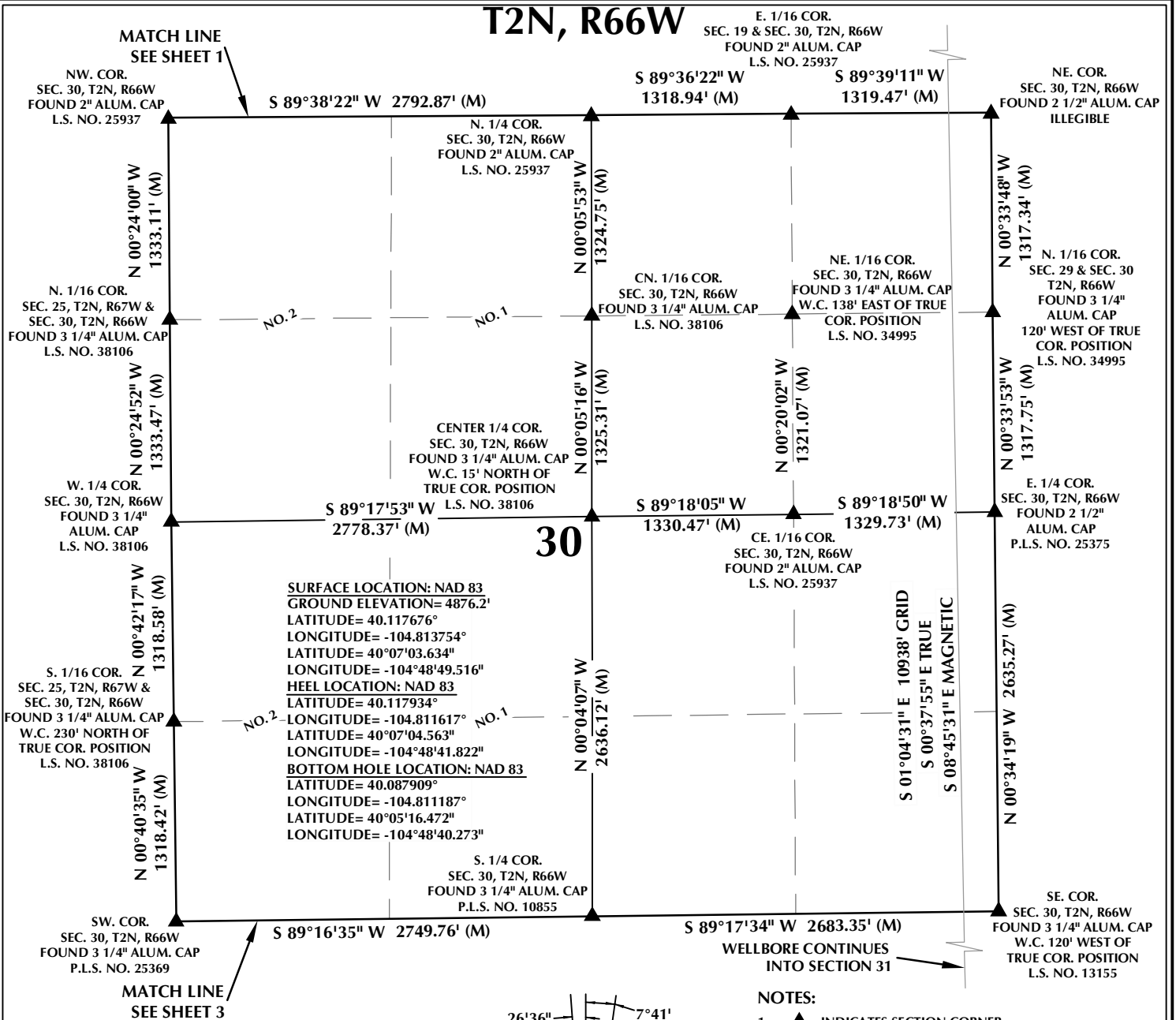
Corner Descriptions:
NW. COR. SEC. 19, T2N, R66W FOUND 2" ALUM. CAP ILLEGIBLE
NE. COR. SEC. 19, T2N, R66W FOUND 2 1/2" ALUM. CAP P.L.S. NO. 25375
SW. COR. SEC. 19, T2N, R66W FOUND 2" ALUM. CAP L.S. NO. 25937
SE. COR. SEC. 19, T2N, R66W FOUND 2 1/2" ALUM. CAP ILLEGIBLE
N. 1/4 COR. SEC. 19, T2N, R66W FOUND 3 1/4" ALUM. CAP W.C. 300' EAST OF TRUE COR. POSITION L.S. NO. 38106
S. 1/4 COR. SEC. 19, T2N, R66W FOUND 2" ALUM. CAP L.S. NO. 25937
W. 1/4 COR. SEC. 19, T2N, R66W FOUND 2 1/2" ALUM. CAP L.S. NO. 16847
E. 1/16 COR. SEC. 19, T2N, R66W FOUND 3 1/4" ALUM. CAP L.S. NO. 4392
E. 1/16 COR. SECS. 19 & 30, T2N, R66W FOUND 2" ALUM. CAP L.S. NO. 25937

Boundary Bearings and Distances:
Top: S 88°57'53" W 2771.80' (M) S 88°57'24" W 2639.35' (M)
Bottom: S 89°38'22" W 2792.87' (M) S 89°36'22" W 1318.94' (M) S 89°39'11" W 1319.47' (M)
Left: N 00°06'13" W 2610.67' (M) N 00°05'34" W 1305.27' (M) N 00°06'27" W 1305.24' (M)
Right: N 00°19'43" W 2642.28' (C) N 00°19'33" W 2642.48' (C)
Internal: N 00°20'29" W 2626.49' (M) N 00°19'45" W 2627.28' (M)
Horizontal: S 89°17'37" W 2782.48' (M) S 89°17'00" W 1319.35' (M) S 89°18'56" W 1319.27' (C)
Vertical: N 00°05'34" W 1305.27' (M) N 00°06'27" W 1305.24' (M)

Other Labels:
NO. 1
NO. 2
CENTER 1/4 COR. SEC. 19, T2N, R66W FOUND 2" ALUM. CAP L.S. NO. 25937
S. 1/16 COR. SEC. 19, T2N, R66W & SEC. 24, T2N, R67W FOUND 3 1/4" ALUM. CAP L.S. NO. 27269
SURFACE LOCATION
483'
883'
578'
285'

DRAFTED BY: LMO	CHECKED BY: RKF	SHEET NO: 1 1 OF 3
DATE DRAFTED: 3/15/18	DATE SURVEYED: 1/5/18	
REVISED:	FILE NAME: 16-175	

T2N, R66W

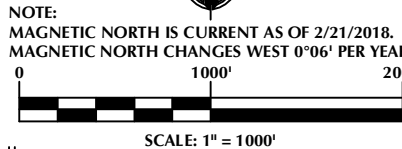


CERTIFICATE OF SURVEYOR:

THIS IS TO CERTIFY THAT THE ABOVE PLAT WAS PREPARED FROM FIELD NOTES OF ACTUAL SURVEYS MADE BY ME OR UNDER MY SUPERVISION AND THAT THE SAME ARE TRUE AND CORRECT TO THE BEST OF MY KNOWLEDGE AND BELIEF. THIS CERTIFICATE DOES NOT REPRESENT A LAND SURVEY PLAT OR IMPROVEMENT SURVEY PLAT AS DEFINED BY C.R.S. 24-5-102 AND CANNOT BE RELIED UPON TO DETERMINE OWNERSHIP.

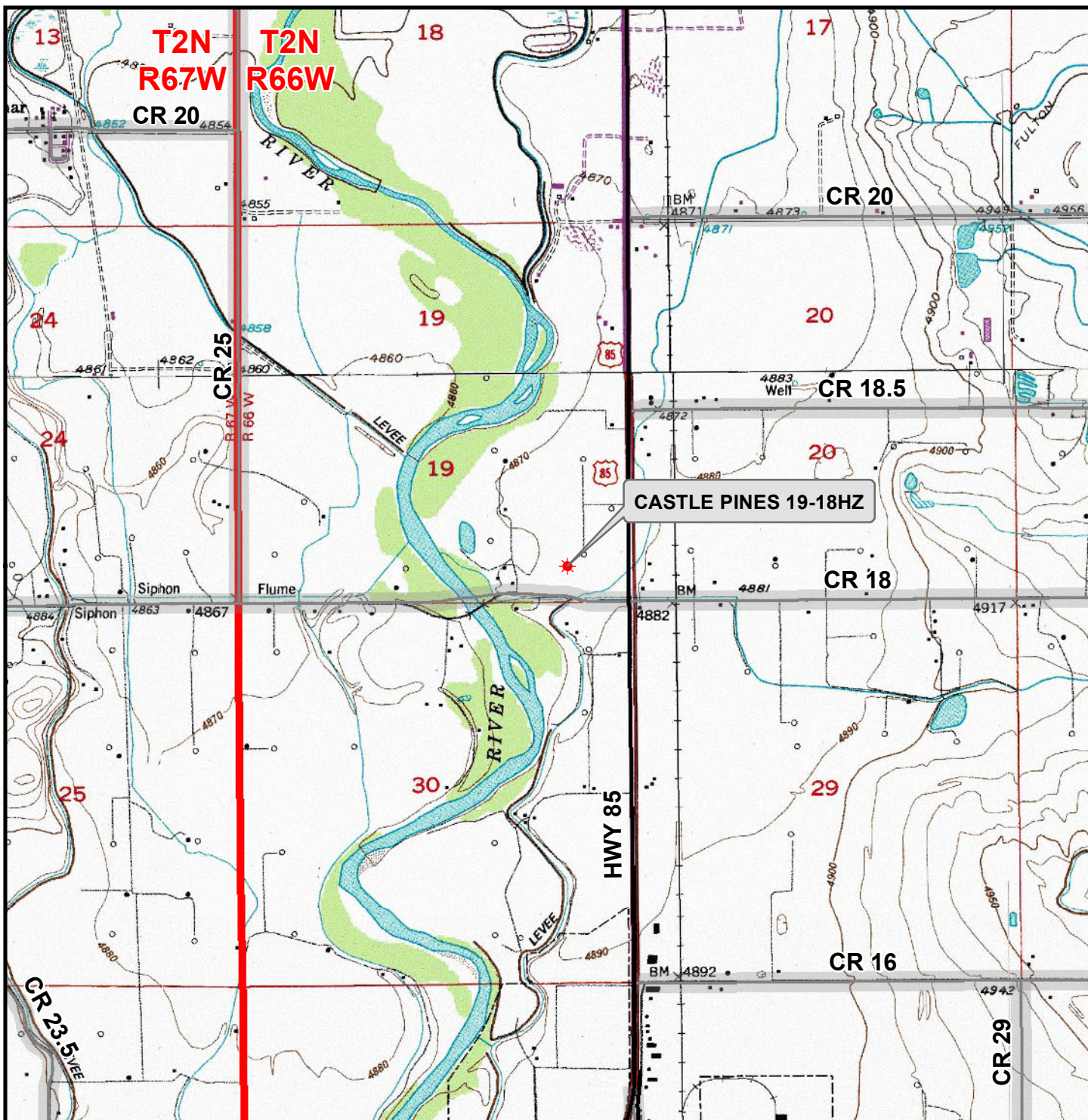
Randall K. French
 RANDALL K. FRENCH
 PROFESSIONAL LAND SURVEYOR
 COLORADO REGISTRATION NUMBER 38512
 3/15/18

NOTICE: ACCORDING TO COLORADO STATE LAW YOU MUST COME TO COURT AND TAKE LEGAL ACTION BASED UPON ANY DEFECT IN THIS SURVEY WITHIN THREE YEARS AFTER YOU FIRST DISCOVER SUCH DEFECT. IN NO EVENT MAY ANY ACTION BASED UPON ANY DEFECT IN THIS SURVEY BE COMMENCED MORE THAN TEN YEARS FROM THE DATE ON THE CERTIFICATION SHOWN HEREON.



NOTES:

- ▲ INDICATES SECTION CORNER.
- INDICATES CALCULATED CORNER.
- ELEVATION BASED ON NAVD88 (GEOID12B).
- BASIS OF BEARING DERIVED FROM COLORADO COORDINATE SYSTEM OF 1983 NORTH ZONE.
- ALL MEASURED DISTANCES ARE GRID.
- COMBINED SCALE FACTOR: .99973013 CALCULATED FROM THE W. 1/4 CORNER OF SECTION 18, T2N, R66W.
- OPERATOR: PRESTON KNUTSEN / PDOP = 1.5.
- SEE ADDENDUM TO WELL LOCATION CERTIFICATE FOR EXISTING IMPROVEMENTS WITHIN 500' OF THE WELL PAD.
- WELL FOOTAGES ARE MEASURED AT RIGHT ANGLES TO THE SECTION LINES.
- THE BOTTOM OF HOLE BEARS S01°04'31"E, 10938' FROM THE HEEL LOCATION.
- NO. 1 & NO. 2 AS SHOWN HEREON ARE GOVERNMENT LOTS 1 & 2 PER THE ORIGINAL GLO SURVEY.



Legend

- ★ Well - Fee - Proposed
 Road - Primitive - Existing
 Road - County - Existing
 Road - Improved - Existing
 Road - Highway - Existing

WELL PAD - CASTLE PINES 16-19HZ

GENERAL LOCATION MAP
CASTLE PINES 19-18HZ
LOCATED IN SECTION 19
T2N, R66W, 6th P.M.
WELD COUNTY, COLORADO

Kerr-McGee Oil & Gas Onshore L.P.

1099 18th Street
 Denver, Colorado 80202



CONSULTING, LLC

SHERIDAN OFFICE **LOVELAND OFFICE**
 1095 Saberton Avenue 1635 Foxtail Drive, Suite 204
 Sheridan, Wyoming 82801 Loveland, Colorado 80538
 Phone 307-674-0609 Phone 970-776-4331

SCALE: 1" = 2,000ft

NAD83 CO-Nft

DRAWN: DP

DATE: 16 Mar 2018

REVISED:

DATE: