

HALLIBURTON

iCem[®] Service

TEP ROCKY MOUNTAIN LLC

Date: Wednesday, March 28, 2018

RU 13-17

Terra RU 13-17 Surface

API #05-045-23748-00

Job Date: Monday, March 26, 2018

Sincerely,

Grand Junction Cement Engineering

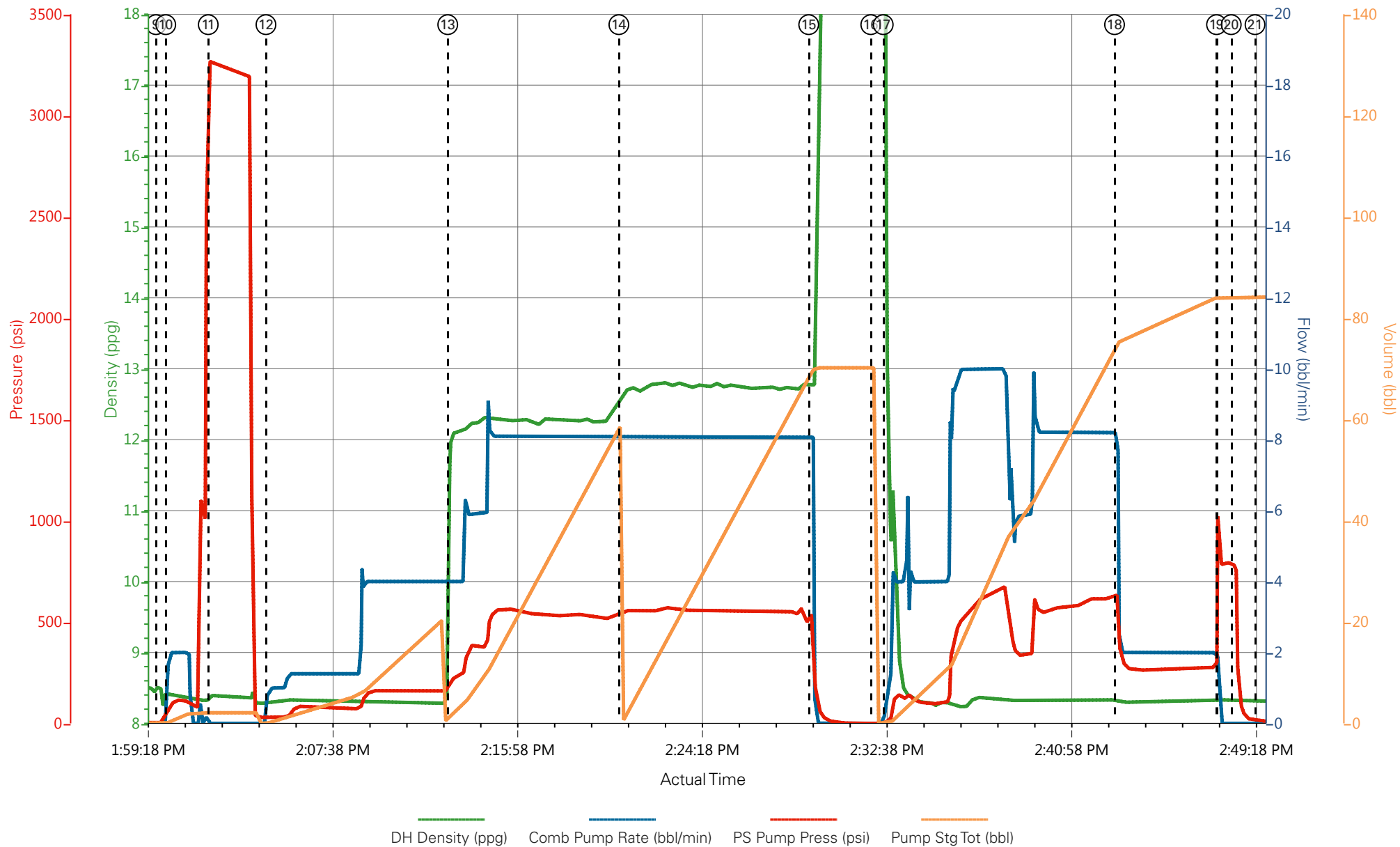
1.0 Real-Time Job Summary

1.1 Job Event Log

Type	Seq. No.	Graph Label	Date	Time	Source	DH Density (ppg)	Comb Pump Rate (bbl/min)	PS Pump Press (psi)	Pump Stg Tot (bbl)	Comments
Event	1	Call Out	3/26/2018	05:30:00	USER					REQUESTED ON LOCATION @ 12:00
Event	2	Pre-Convoy Safety Meeting	3/26/2018	09:45:00	USER					ALL HES PRESENT
Event	3	Crew Leave Yard	3/26/2018	10:00:00	USER					1 HT 400 PUMP TRUCK E1, 1 660 BULK TRUCKS, 1 450 SERVICE PICKUP
Event	4	Arrive At Loc	3/26/2018	12:00:00	USER					RIG RUNNING CASING UPON HES ARRIVAL
Event	5	Assessment Of Location Safety Meeting	3/26/2018	12:15:00	USER					MET WITH COMP REP, AND WENT OVER NUMBERS AND JOB PROCEDURE. WALKED AROUND LOCATION AND COLLECTED WATER SAMPLE. COMP REP WAS OFFERED SDS FOR ALL CHEMICLES USED BY HES.
Event	6	Spot Equipment	3/26/2018	12:30:00	USER					1 HT 400 PUMP TRUCK E1, 1 660 BULK TRUCKS, 1 450 SERVICE PICKUP
Event	7	Pre-Rig Up Safety Meeting	3/26/2018	12:45:00	USER					ALL HES PRESENT
Event	8	Pre-Job Safety Meeting	3/26/2018	13:45:00	USER					ALL HES EMPLOYEES AND RIG CREW PRESENT, RIG CIRCULATED @ 12 BPM PRIOR TO JOB, PRESSURE 115 PSI
Event	9	Start Job	3/26/2018	13:59:48	COM5					TD 1118', TP 1111' OF 9 5/8" 32.3# H-40 SURFACE CSG, FC @ 1080', SJ 31', OH 13.5", MUD 9.3 PPG
Event	10	Prime Lines	3/26/2018	14:00:15	USER	8.33	2.0	115	2	FRESH WATER
Event	11	Test Lines	3/26/2018	14:02:10	COM5			3260		PRESSURE HELD

Event	12	Pump Spacer	3/26/2018	14:04:46	COM5	8.33	4.0	140	20	FRESH WATER
Event	13	Pump Lead Cement	3/26/2018	14:12:58	COM5	12.3	8.0	560	53	125 SKS VARICEM CMT 12.3 PPG, 2.38 FT3/SK, 13.77 GAL/SK
Event	14	Pump Tail Cement	3/26/2018	14:20:41	COM5	12.8	8.0	560	66	175 SKS VARICEM CMT 12.8 PPG, 2.11 FT3/SK, 11.78 GAL/SK
Event	15	Shutdown	3/26/2018	14:29:15	USER					END OF CEMENT
Event	16	Drop Top Plug	3/26/2018	14:32:03	COM5					VERIFIED BY FLAG INDICATOR
Event	17	Pump Displacement	3/26/2018	14:32:37	COM5	8.33	10.0	640	85	FRESH ATER
Event	18	Slow Rate	3/26/2018	14:43:03	USER	8.33	2.0	270	75	SLOWED TO BUMP PLUG
Event	19	Bump Plug	3/26/2018	14:47:39	COM5	8.33	2.0	270	85	PLUG BUMPED
Event	20	Check Floats	3/26/2018	14:48:19	USER			800		FLOATS HELD .5 BBL FLOW BACK TO TRUCK
Event	21	End Job	3/26/2018	14:49:24	COM5					32 BBL CEMENT TO SURFACE USED 20 LBS SUGAR
Event	22	Post-Job Safety Meeting (Pre Rig-Down)	3/26/2018	14:55:00	USER					ALL HES PRESENT
Event	23	Pre-Convoy Safety Meeting	3/26/2018	16:45:00	USER					ALL HES PRESENT
Event	24	Crew Leave Location	3/26/2018	17:00:00	USER					THANK YOU FOR CHOOSING HALLIBURTON CEMENT, DUSTIN HYDE AND CREW

TERRA - RU 13-17 - 9 5/8" SURFACE



- | | | | | | |
|-----------------------------|---|-----------------|--------------------|---------------------|---|
| ① Call Out | ⑤ Assessment Of Location Safety Meeting | ⑨ Start Job | ⑬ Pump Lead Cement | ⑰ Pump Displacement | 21 End Job |
| ② Pre-Convoy Safety Meeting | ⑥ Spot Equipment | ⑩ Prime Lines | ⑭ Pump Tail Cement | ⑱ Slow Rate | 22 Post-Job Safety Meeting (Pre Rig-Down) |
| ③ Crew Leave Yard | ⑦ Pre-Rig Up Safety Meeting | ⑪ Test Lines | ⑮ Shutdown | ⑲ Bump Plug | 23 Pre-Convoy Safety Meeting |
| ④ Arrive At Loc | ⑧ Pre-Job Safety Meeting | ⑫ Pump Spacer 1 | ⑯ Drop Top Plug | 20 Check Floats | 24 Crew Leave Location |

▼ **HALLIBURTON** | iCem® Service

Created: 2018-03-26 13:14:31, Version: 4.2.393

Edit

Customer: TEP ROCKY MOUNTAIN LLC

Job Date: 3/26/2018

Well: RU 13-17

Representative: BOBBY BROWN

Sales Order #: 904733137

ELITE 1: HYDE / SALAZAR

TERRA - RU 13-17 - 9 5/8" SURFACE

