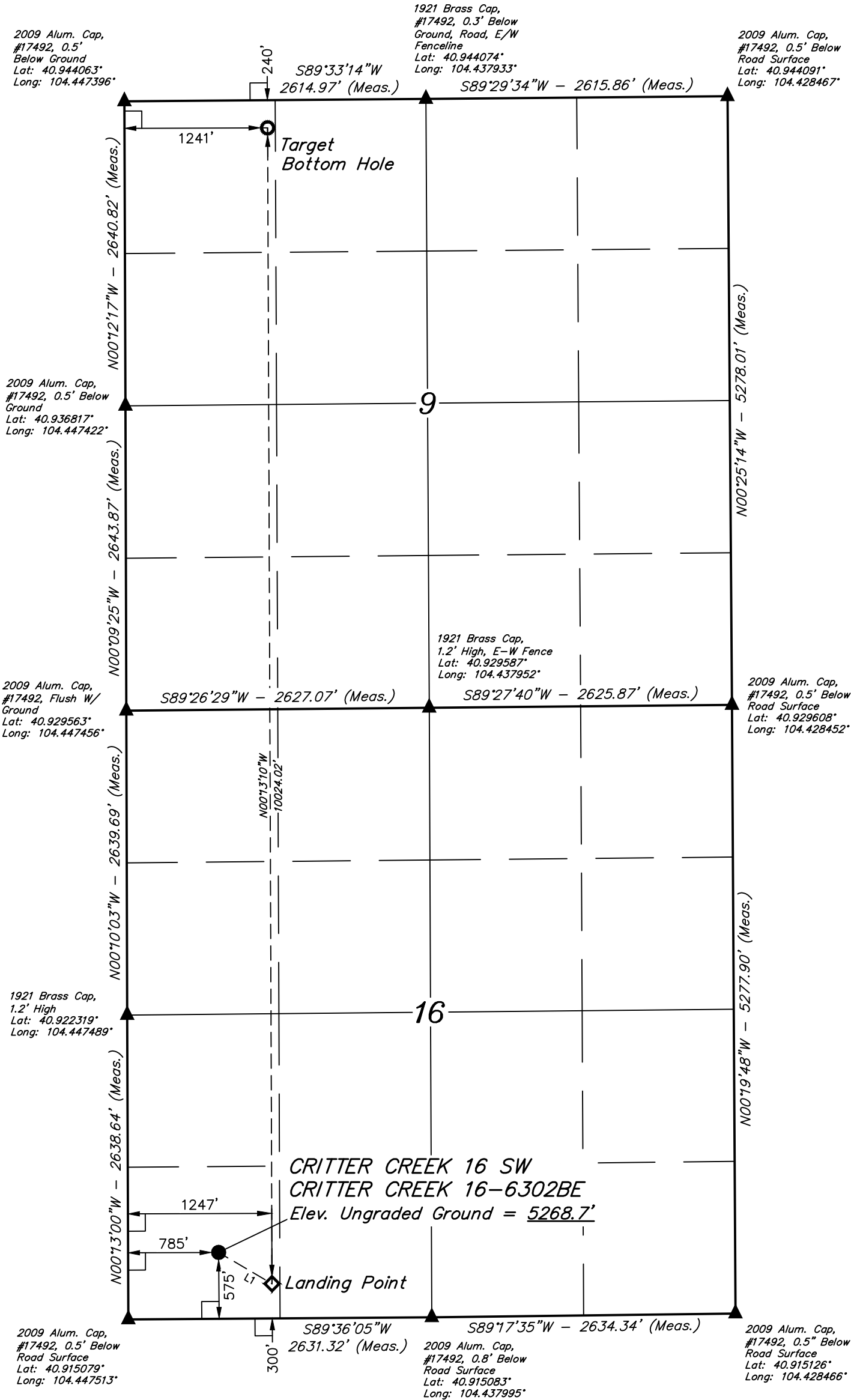


LEGEND:

- = 90° SYMBOL
- = PROPOSED WELLHEAD.
- = LANDING POINT.
- = TARGET BOTTOM HOLE.
- = SECTION CORNERS LOCATED. (NAD 83)

T11N, R63W, 6th P.M.



LINE TABLE		
LINE	DIRECTION	LENGTH
L1	S59°34'58"E	536.92'

PDOP = 1.2



NAD 83 (SURFACE LOCATION)	NAD 83 (LANDING POINT)	NAD 83 (TARGET BOTTOM HOLE)
LATITUDE = 40°54'59.97" (40.916658°)	LATITUDE = 40°54'57.26" (40.915904°)	LATITUDE = 40°56'36.28" (40.943410°)
LONGITUDE = 104°26'40.81" (104.444668°)	LONGITUDE = 104°26'34.80" (104.443000°)	LONGITUDE = 104°26'34.47" (104.442908°)
NAD 27 (SURFACE LOCATION)	NAD 27 (LANDING POINT)	NAD 27 (TARGET BOTTOM HOLE)
LATITUDE = 40°55'00.03" (40.916676°)	LATITUDE = 40°54'57.32" (40.915922°)	LATITUDE = 40°56'36.34" (40.943427°)
LONGITUDE = 104°26'38.96" (104.444156°)	LONGITUDE = 104°26'32.95" (104.442487°)	LONGITUDE = 104°26'32.62" (104.442395°)
STATE PLANE NAD 83 (CO. NORTH)	STATE PLANE NAD 83 (CO. NORTH)	STATE PLANE NAD 83 (CO. NORTH)
N: 1578526.29' E: 3291673.79'	N: 1578257.09' E: 3292138.20'	N: 1588278.37' E: 3292044.19'
STATE PLANE NAD 27 (CO. NORTH)	STATE PLANE NAD 27 (CO. NORTH)	STATE PLANE NAD 27 (CO. NORTH)
N: 578524.32' E: 2291823.23'	N: 578255.13' E: 2292287.64'	N: 588276.21' E: 2292193.68'

BASIS OF BEARINGS

TRANSVERSE MERCATOR PROJECTION WITH A CENTRAL MERIDIAN OF W105°00'00".

BASIS OF ELEVATION

OPUS SOLUTION GENERATED NAVD 88



UELS, LLC
Corporate Office * 85 South 200 East
Vernal, UT 84078 * (435) 789-1017



HIGHPOINT OPERATING CORPORATION

CRITTER CREEK 16 SW PAD
CRITTER CREEK 16-6302BE
SW 1/4 SW 1/4, SECTION 16, T11N, R63W, 6th P.M.
WELD COUNTY, COLORADO

SURVEYED BY	MATTHEW MILLER, G.W.	04-19-18	SCALE
DRAWN BY	C.C.	04-23-18	1" = 1000'

WELL LOCATION PLAT

CERTIFICATE OF REGISTRATION
THIS IS TO CERTIFY THAT THE ABOVE PLAT WAS PREPARED FROM FIELD NOTES OF ACTUAL SURVEYS MADE BY ME OR UNDER MY SUPERVISION, AND THAT THE SAME ARE TRUE AND CORRECT TO THE BEST OF MY KNOWLEDGE AND BELIEF.

REGISTERED LAND SURVEYOR
REGISTRATION NO. 28285
STATE OF COLORADO

04-23-18