

Temperature (Quick Look)

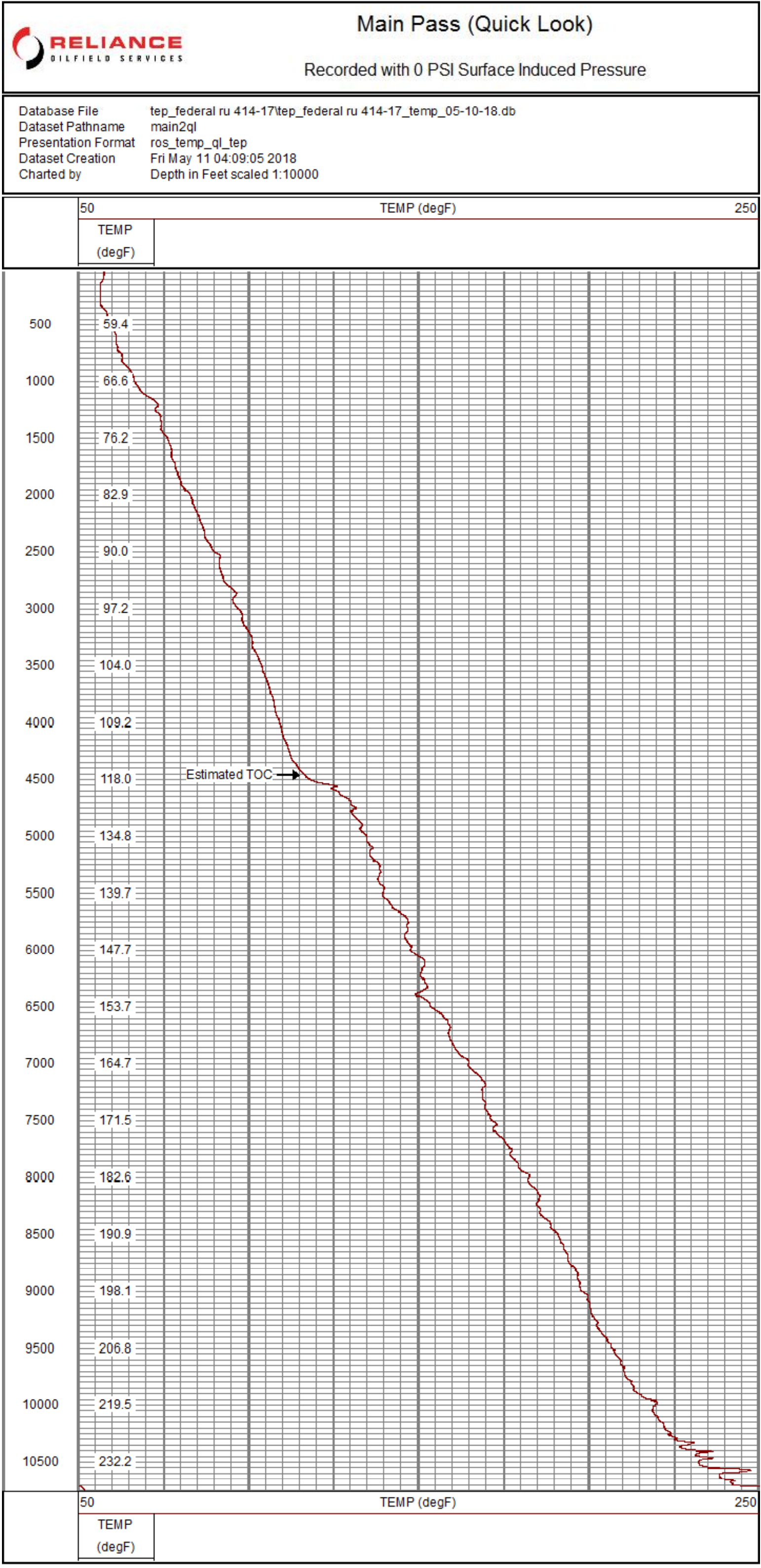
Gamma Ray



Casing Collar Log

Company TEP Rocky Mountain LLC			
Well Federal RU 414-17			
Field Rulison			
County Garfield			
State Colorado			
Location:		Other Services	
SEC 17 TWP 7S RGE 93W		---	
Permanent Datum	Ground Level	Elevation	K.B. 8389.6' D.F. 8388.6' G.L. 8365.6'
Log Measured From	Kelly Bushing	24 FT	
Drilling Measured From	Kelly Bushing		

Date	10-MAY-2018		
Run Number	One		
Depth Driller	10787 FT		
Depth Logger	10741 FT		
Bottom Logged Interval	10741 FT		
Top Log Interval	Surface		
Open Hole Size	8.750"		
Type Fluid	Fresh Water		
Density / Viscosity	8.34 lb/gal		
Max. Recorded Temp.	252°F		
Estimated Cement Top	4515 FT		
Time Well Ready	ROA		
Time Logger on Bottom	01:45		
Equipment Number	HD-0359		
Location	Grand Junction, CO		
Recorded By	A. Ellsworth		
Witnessed By	Craig Borgstede		
Borehole Record		Tubing Record	
Run Number	Bit	From	To
		Size	Weight
			From
			To
</			

<div><<< Fold Here >>></div> <div> All interpretations are opinions based on inferences from electrical or other measurements and we cannot and do not guarantee the accuracy or correctness of any interpretation, and we shall not, except in the case of gross or willful negligence on our part, be liable or responsible for any loss, costs, damages, or expenses incurred or sustained by anyone resulting from any interpretation made by any of our officers, agents or employees. These interpretations are also subject to our general terms and conditions set out in our current Price Schedule. </div>
<div>Comments</div> <div> Log ran as per customer request Depth referenced to Kelly Bushing at 24 FT Marker Joint logged from 6714 FT to 6736 FT Log ran from 10741 FT to Surface Log ran with 0 PSI Surface Induced Pressure Thank you for choosing Reliance Oilfield Services, LLC!! </div>



Sensor	Offset (ft)	Schematic	Description	Length (ft)	O.D. (in)	Weight (lb)
CCL	3.70		Titan CHD-14375 GO Titan 1-7/16" Assembled Electric Cable Head w/ 1" Fishing Neck	1.03	1.44	3.60
			UW AGS-001 (211461) Sondex Adapter - GO Box to Sondex Pin	0.21	1.69	1.00
			UW XTU-002 (10017430) Crossover Ultrawire Toolbus to Ultralink	1.58	1.69	6.50
			UW CCL-028 (10024821) 3-1/8" Ultrawire Casing Collar Locator	1.61	3.13	36.00
GR	1.76		UW PGR-020 (10019371) Production Gamma Ray	1.92	1.69	9.50
TEMP	0.37		UW PRT-016 (10025100) Platinum Resistance Thermometer	1.04	1.69	5.20
TSTAMP	0.00		UW BUL-006 (10019616) Sondex Ultrawire Bullnose Terminator Sub	0.22	1.69	1.20
Dataset:		TEP_Federal RU 414-17_TEMP_05-10-18.db: field/well/run1/main2				
Total length:		7.62 ft				
Total weight:		63.00 lb				
O.D.:		3.13 in				

Calibration Report				
Database File	C:\ProgramData\Warrior\Data\TEP_Federal RU 414-17\TEP_Federal RU 414-17_TEMP_05-10-18.db			
Dataset Pathname	main			
Dataset Creation	Fri May 11 01:07:34 2018			
Temperature Calibration Report				
	Serial Number:	10025100		
	Tool Model:	016		
	Performed:	Sun Nov 12 13:30:03 2017		
Point #	Reading	Reference		
1	13249.00 cps	68.00	degF	
2	18454.00 cps	104.00	degF	
3	29735.00 cps	176.00	degF	
4	41457.00 cps	248.00	degF	
5	52851.00 cps	320.00	degF	
6	59128.00 cps	356.00	degF	
7	cps		degF	
8	cps		degF	
9	cps		degF	
10	cps		degF	
Gamma Ray Calibration Report				
Serial Number:	10019371			
Tool Model:	020			
Performed:	Sun Nov 12 05:37:04 2017			
Calibrator Value:	637.0	GAPI		
Background Reading:	78.8	cps		
Calibrator Reading:	1069.9	cps		
Sensitivity:	0.6427	GAPI/cps		

	Company TEP Rocky Mountain LLC Well Federal RU 414-17 Field Rulison County Garfield State Colorado
--	--