

T1N, R66W, 6th P.M.

GREAT WESTERN OPERATING COMPANY

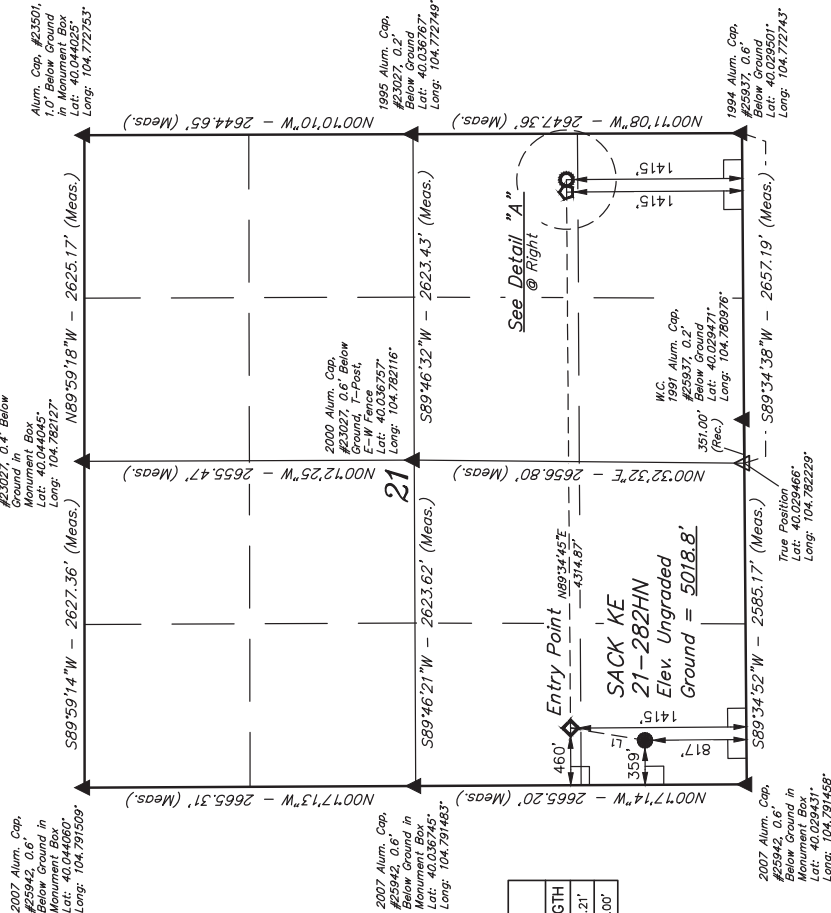
SACK KE 21-282HN
SW 1/4 SW 1/4, SECTION 21, T1N, R66W, 6th P.M.
WELD COUNTY, COLORADO

BASIS OF BEARINGS
TRANSVERSE MERCATOR PROJECTION WITH
A CENTRAL MERIDIAN OF W 105°00'00".

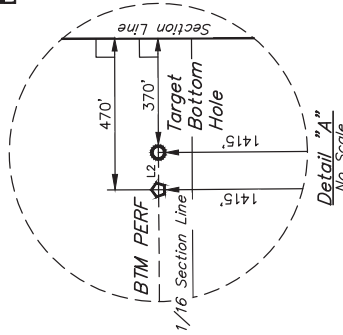
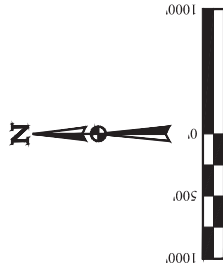
BASIS OF ELEVATION
OPUS SOLUTION GENERATED NAVD 88

LEGEND:

- 90° SYMBOL
- PROPOSED WELLHEAD.
- ENTRY POINT.
- BTM PERF.
- TARGET BOTTOM HOLE.
- SECTION CORNERS LOCATED (NAD 83)
- SECTION CORNERS RE-ESTABLISHED. (Not Set on Ground.) (NAD 83)



LINE TABLE		
LINE	DIRECTION	LENGTH
L1	N09°20'02"E	607.21'
L2	N89°34'38"E	100.00'



THIS IS TO CERTIFY THAT THE ABOVE SURVEY WAS MADE BY ME OR UNDER MY SUPERVISION AND THAT THE SAME ARE TRUE AND CORRECT TO THE BEST OF MY KNOWLEDGE AND BELIEF.

REGISTERED LAND SURVEYOR
REGISTRATION NO. 28385
STATE OF COLORADO
K.B. 28288

REV: 1 05-21-18 K.B. (LATITUDE CORRECTION)

PDOP = 1.5



UELS, LLC
Corporate Office * 85 South 200 East
Vernal, UT 84078 * (435) 789-1017

SURVEYED BY		SCALE	
JAMES FRESHWATER, N.W.		04-18-18 1" = 1000'	
DRAWN BY		WELL LOCATION PLAT	
K.B.		04-30-18 1" = 1000'	

NAD 83 (SURFACE LOCATION)		NAD 83 (ENTRY POINT)		NAD 83 (BTM PERF)		NAD 83 (TARGET BOTTOM HOLE)	
LATITUDE = 40°01'54.04" (40.031677°)		LATITUDE = 40°01'59.95" (40.03321°)		LATITUDE = 40°02'00.16" (40.033379°)		LATITUDE = 40°02'00.17" (40.033380°)	
LONGITUDE = 104°47'24.67" (104.790186°)		LONGITUDE = 104°47'23.59" (104.789829°)		LONGITUDE = 104°46'26.64" (104.774424°)		LONGITUDE = 104°46'26.64" (104.774667°)	
NAD 27 (SURFACE LOCATION)		NAD 27 (ENTRY POINT)		NAD 27 (BTM PERF)		NAD 27 (TARGET BOTTOM HOLE)	
LATITUDE = 40°01'54.10" (40.031693°)		LATITUDE = 40°02'00.01" (40.03337°)		LATITUDE = 40°02'00.22" (40.033395°)		LATITUDE = 40°02'00.23" (40.033397°)	
LONGITUDE = 104°47'22.77" (104.789659°)		LONGITUDE = 104°47'21.49" (104.789302°)		LONGITUDE = 104°46'26.03" (104.773898°)		LONGITUDE = 104°46'24.75" (104.773541°)	