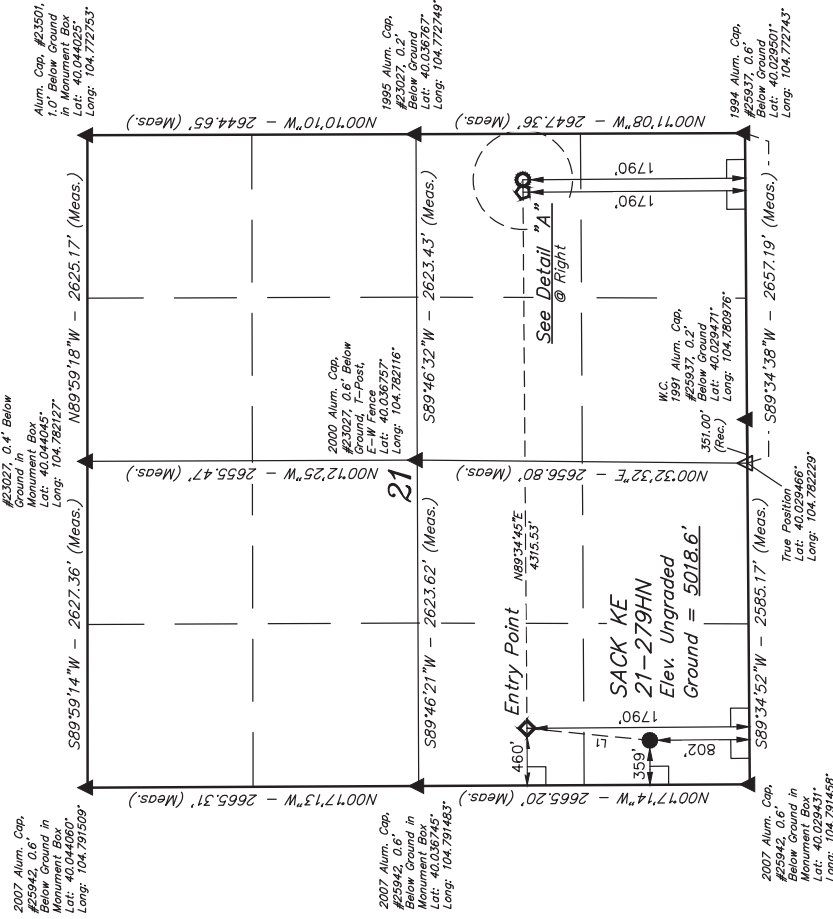


**GREAT WESTERN OPERATING COMPANY**

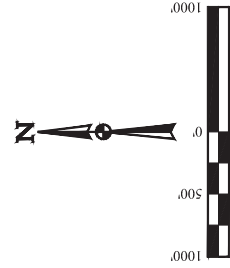
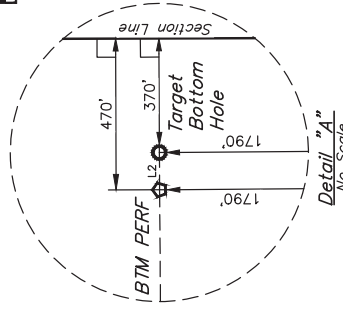
SACK KE 21-279HN  
SW 1/4 SW 1/4, SECTION 21, T1N, R66W, 6th P.M.  
WELD COUNTY, COLORADO

**BASIS OF BEARINGS**  
TRANSVERSE MERCATOR PROJECTION WITH  
A CENTRAL MERIDIAN OF W105°00'00".

**BASIS OF ELEVATION**  
OPUS SOLUTION GENERATED NAVD 88



LINE TABLE		
LINE	DIRECTION	LENGTH
L1	N05°34'28"E	993.84'
L2	N89°34'38"E	100.00'



THIS IS TO CERTIFY THAT THE ABOVE  
NOTES OF ACTUAL SURVEYS MADE  
AND THAT THE SAME ARE TRUE AN  
KNOWLEDGE AND BELIEF.

REV: 1 05-21-18 K.B. (LATITUDE CORRECTION)

PDOP = 1.5

**U.S. JINTAH**  
  
**UELS, LLC**  
 Corporate Office \* 85 South 200 East  
 Vernal, UT 84078 \* (435) 789-1017

NAD 83 (SURFACE LOCATION)	NAD 83 (ENTRY POINT)	NAD 83 (BTM PERF)	NAD 83 (TARGET BOTTOM HOLE)
LATITUDE = 40°01'53.89" (04.0316396) LONGITUDE = 104°47'24.67" (100.7801862)	LATITUDE = 40°02'03.72" (04.0343667) LONGITUDE = 104°47'21.50" (104.7893063)	LATITUDE = 40°02'03.87" (04.0344088) LONGITUDE = 104°46'26.04" (104.7738995)	LATITUDE = 40°02'03.87" (04.0344088) LONGITUDE = 104°46'26.04" (104.7738995)
NAD 27 (SURFACE LOCATION)	NAD 27 (ENTRY POINT)	NAD 27 (BTM PERF)	NAD 27 (TARGET BOTTOM HOLE)
LATITUDE = 40°01'53.95" (04.0316329) LONGITUDE = 104°47'22.77" (104.7898592)	LATITUDE = 40°02'03.72" (04.0343667) LONGITUDE = 104°47'21.50" (104.7893063)	LATITUDE = 40°02'03.93" (04.0344247) LONGITUDE = 104°46'26.04" (104.7738995)	LATITUDE = 40°02'03.93" (04.0344247) LONGITUDE = 104°46'26.04" (104.7738995)

K.B. 04-30  
WELL LOCATION PLAT