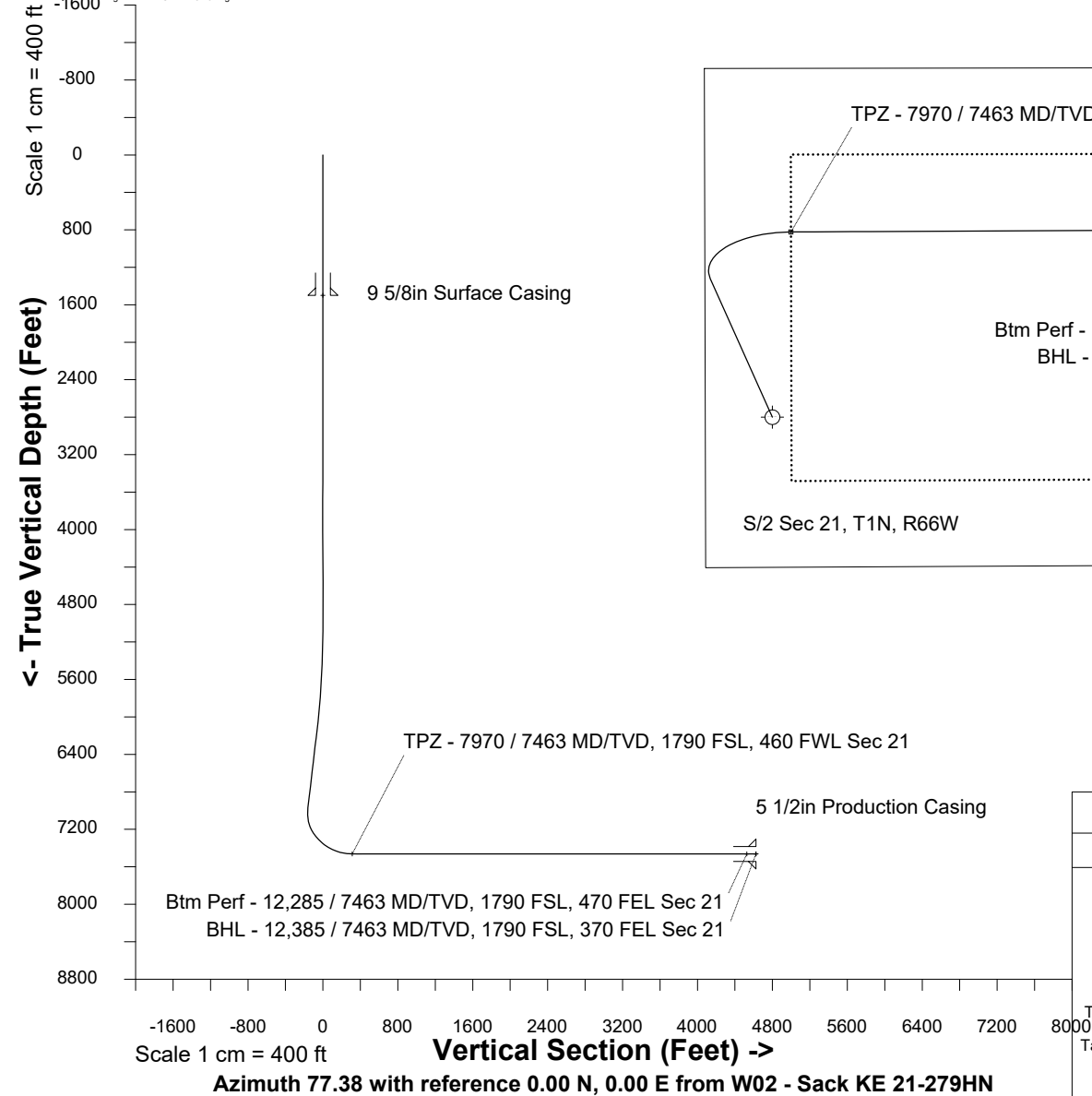


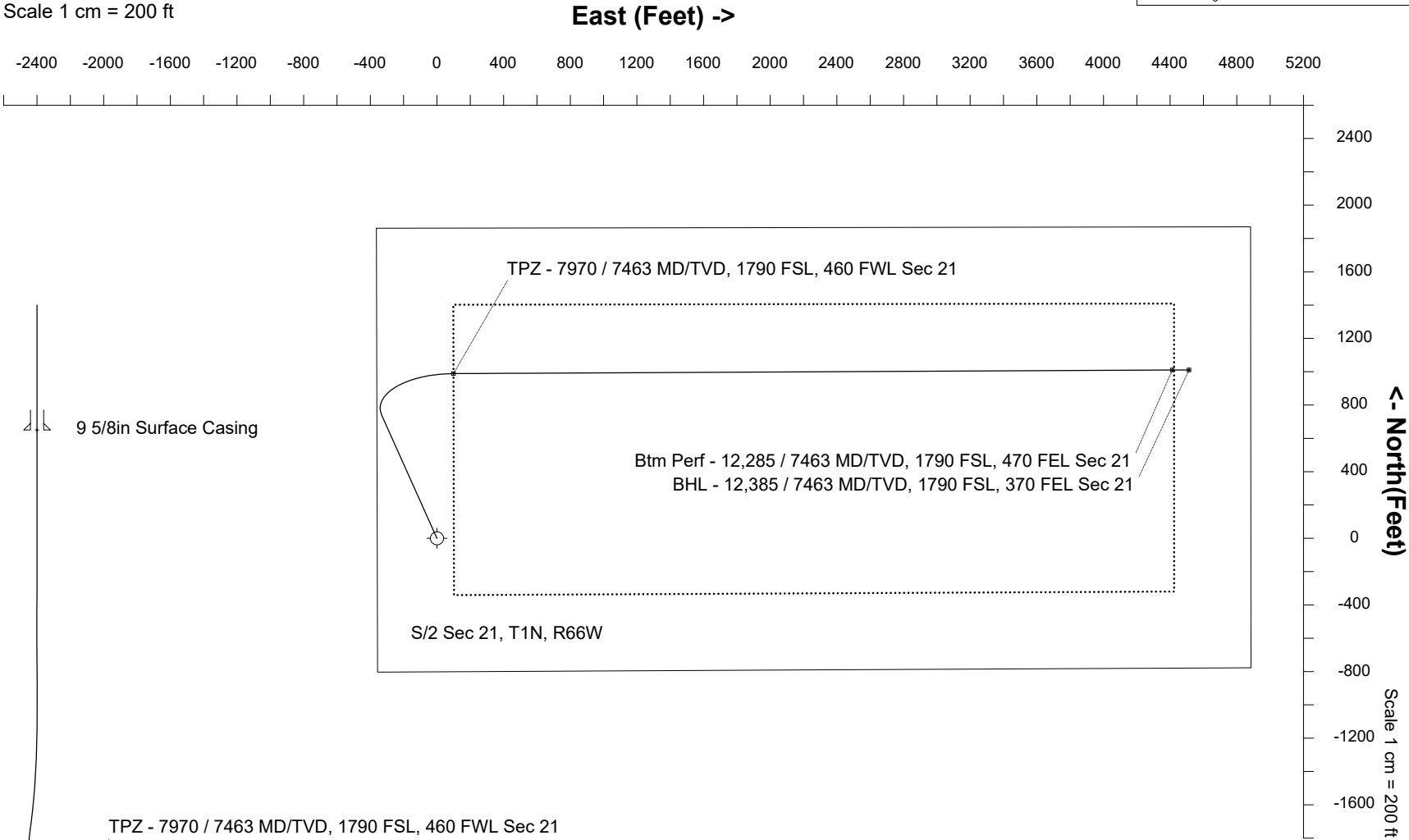
May-21-2018
EMM-2015 [2000.0-2020.0] Dip: 66.41 deg Field: 52108.5 nT
Lat: N40 1 54.0372 Long: W104 47 24.6996 Elev: 5020.90 ft
Magnetic North is 8.16 deg East of TRUE North
To correct azimuth from Magnetic to TRUE add 8.16 deg



Great Western Operating Company, LLC

Location	Colorado	Slot	W02 - Sack KE 21-279HN
Field	Wattenburg	Well	Sack KE 21-279HN
Installation	Sack	Wellbore	Sack KE 21-279HN (PWB)

Created by	admin
Date plotted	21-May-2018
Plot reference is Sack KE 21-279HN (PWB).	
Ref wellpath is Sack KE 21-279HN (PWP#1).	
Coordinates are in Feet reference W02 - Sack KE 21-279HN.	
True Vertical Depths are reference Rig Datum.	
Measured Depths are reference Rig Datum.	
Rig Datum: Planned Datum #1	
Rig Datum to Mean Sea Level: 5040.90 ft.	
Plot North is aligned to TRUE North.	



WELL PROFILE DATA								
Point	MD	Inc	Azi	TVD	North	East	deg/100ft	V. Sect
Tie on	0.00	0.00	0.00	0.00	S 0.00	W 0.00		0.00
KOP	5079.50	0.00	335.84	5079.50	S 0.00	W 0.00	0.00	0.00
End of Build	6079.47	30.00	335.84	6034.40	N 233.45	W 104.71	3.00	-51.17
End of Hold	7187.94	30.00	335.84	6994.38	N 739.13	W 331.53	0.00	-162.02
Target TPZ - ...Sec 21	7970.05	90.00	89.71	7463.00	N 988.68	E 98.85	13.00	312.48
Target Btm Pe...Sec 21	12284.70	90.00	89.71	7463.00	N 1010.20	E 4413.44	0.00	4527.53
End of Turn	12285.21	90.00	89.78	7463.00	N 1010.20	E 4413.95	13.00	4528.03
T.D. & Target BHL... 21	12384.67	90.00	89.78	7463.00	N 1010.58	E 4513.41	0.00	4625.16