

**GREAT WESTERN OPERATING COMPANY**

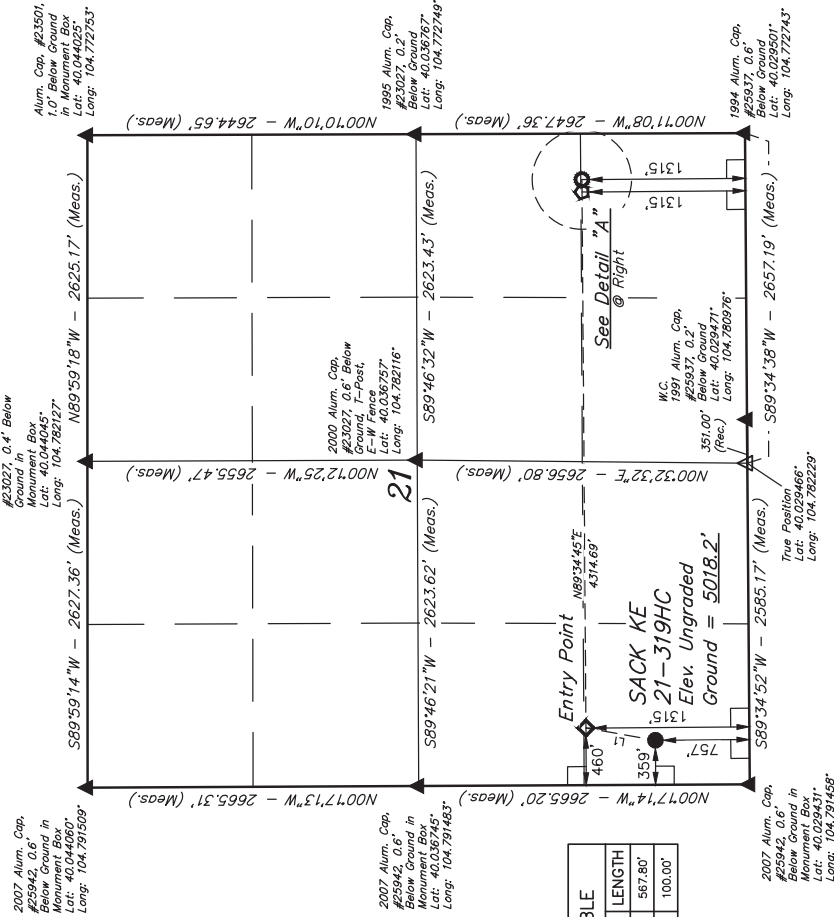
SACK KE 21-319HC  
SW 1/4 SW 1/4, SECTION 21, T1N, R66W, 6th P.M.  
WELD COUNTY, COLORADO

## BASIS OF BEARINGS

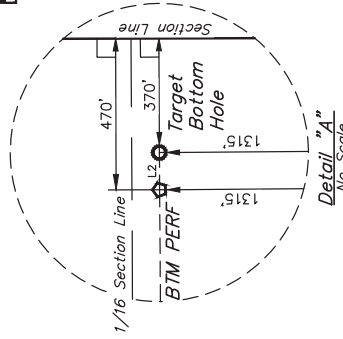
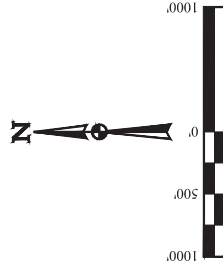
**TRANSVERSE MERCATOR PROJECTION WITH  
A CENTRAL MERIDIAN OF W105°00'00".**

## BASIS OF ELEVATION

OPUS SOLUTION GENERATED NAVD 88



LINE TABLE		
LINE	DIRECTION	LENGTH
L1	N10°00'34"E	567.80'
L2	N89°34'38"E	100.00'



THIS IS TO CERTIFY THAT THE ABOVE  
NOTES OF ACTUAL SURVEYS MADE  
BY ME ARE TRUE AND  
KNOWLEDGE AND BELIEF.

REV: 05-21-18 K.B. (LATITUDE CORRECTION)

PDOP = 1.5



**UINTAH**  
ENGINEERING & LAND SURVEYING

**WELL LOCATION PLAT**

**SURVEYED BY** JAMES FRESHWATER, N.W.  
**DRAWN BY** K.B.

**DATE** 04-18-18  
**SCALE** 1" = 1000'

**UELS, LLC**  
Corporate Office • 85 South 200 East  
Vernal, UT 84078 • (435) 789-1017