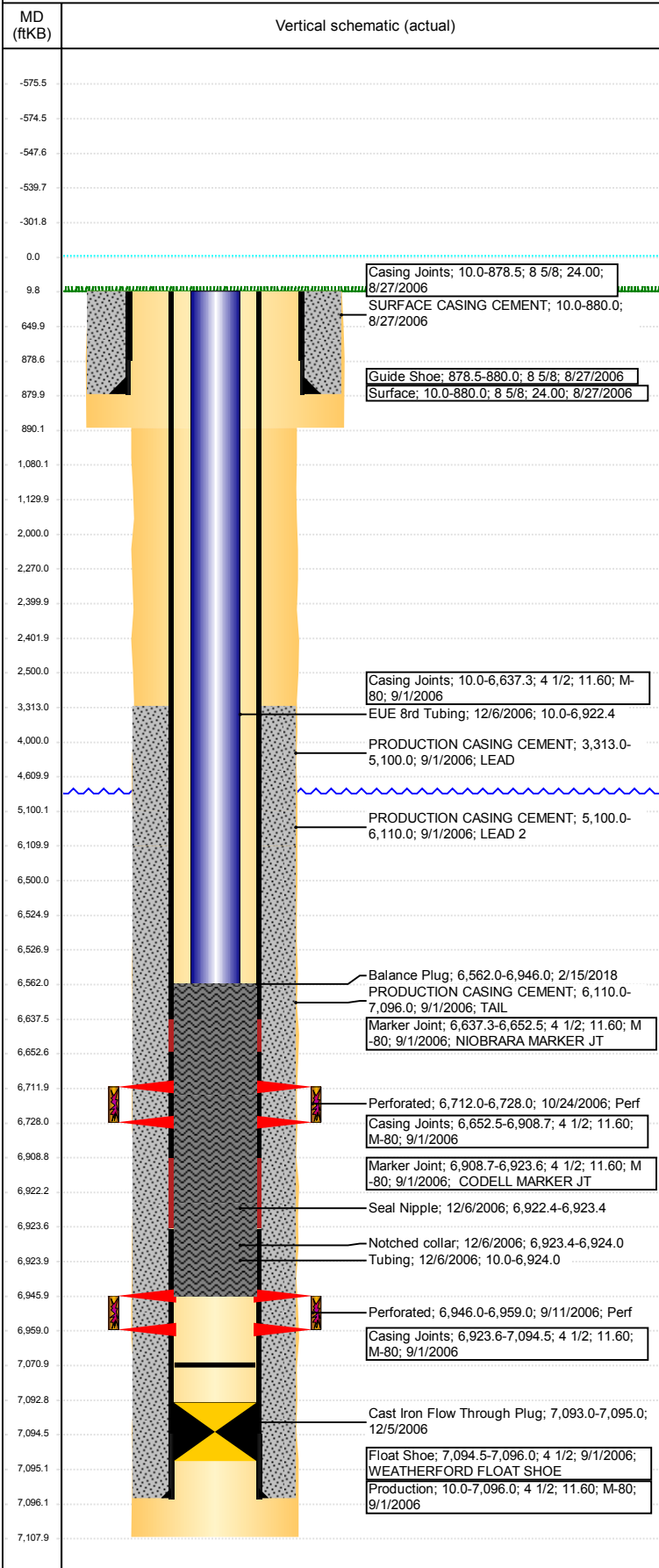


Well Name: WASTE MANAGEMENT 31-35

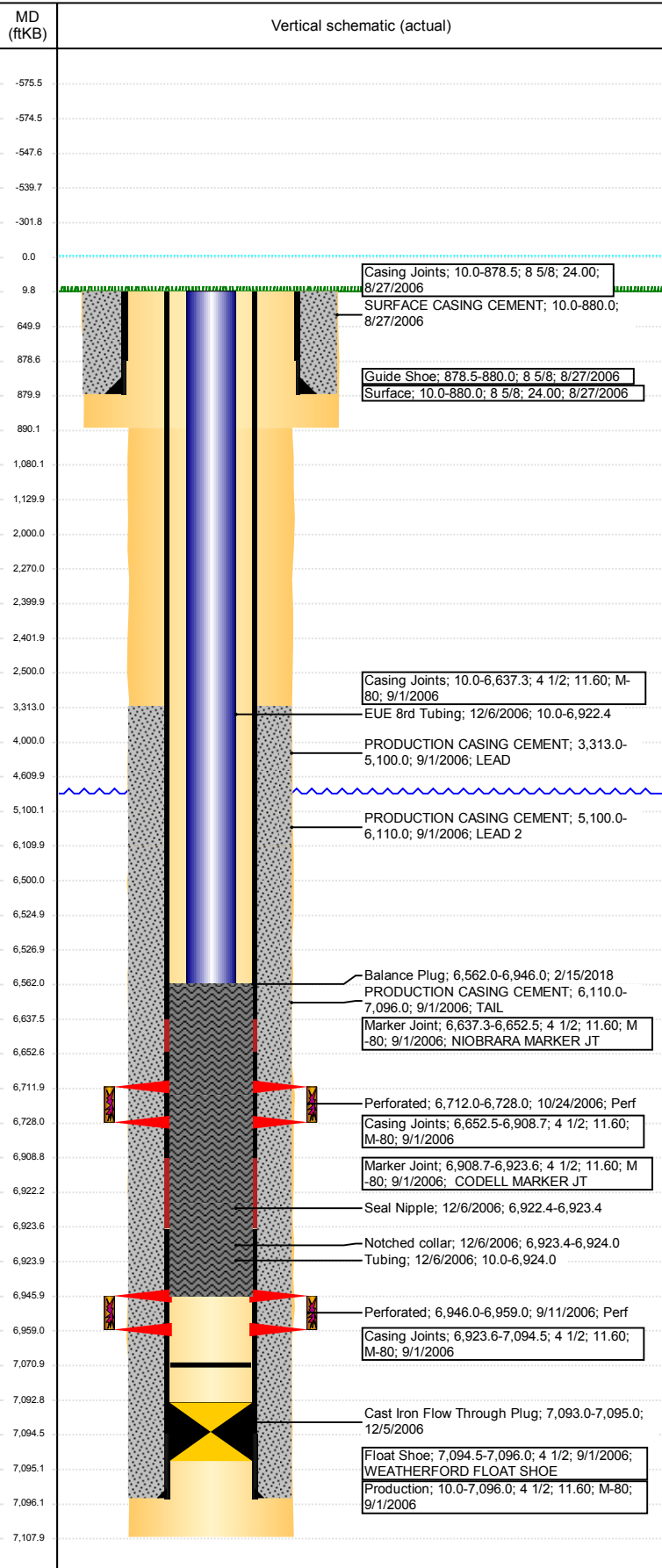
VERTICAL - ORIGINAL HOLE, 6/13/2018 3:18:10 PM



Well Header						
API 05-123-24007		Well Report Center 424404164		Well Configuration Type VERTICAL		
Original KB Elevation (ft) 4,873	KB - GL / MSL (ftKB) 10.00	Spud Date 8/27/2006		P & A Date		
Production Route C3-05			Well Production Status TA		SoRT Ignore Yes	
Directions To Well				Actual Latitude (°) 40.18757903	Actual Longitude (°) -104.51667394	
Comment PUSH CIPF TO 7095'. BALANCE PLUG SET 2/15/18, TUBING STILL DOWNHOLE??? STATE SHOWS SHUT IN SINCE APR 2017.						
Congressional Location						
Quarter 3 NW	Quarter 4 NE	Section 35	Township 3	Twnshp N/S Dir N	Range 64	Range E/W Dir W
Rig Operator						
Rig Operator						
Plug Back Total Depths						
Date	Depth (ftKB)	Method		Com		
2/6/2018	7,071.0	TAG				
Wellbore Sections						
Section Des		Size (in)	Act Top, MD (ftKB)		Act Btm, MD (ftKB)	
SURFACE		12 1/4	10		890	
PRODUCTION		7 7/8	890		7,108	
Zone Statuses						
Zone Name		Status Date		Status		
CODELL		2/15/2018		TA		
NIOBRARA		2/15/2018		TA		
Casing Strings						
Surface, 880.0ftKB						
Casing Description Surface	Run Date 8/27/2006	OD (in) 8 5/8	Wt/Len (l...) 24.00	Grade	Top, MD (ft...) 10.0	MD (ftKB) 880.0
Production, 7,096.0ftKB						
Casing Description Production	Run Date 9/1/2006	OD (in) 4 1/2	Wt/Len (l...) 11.60	Grade M-80	Top, MD (ft...) 10.0	MD (ftKB) 7,096.0
Cement						
Des		Start Date		Top (ftKB)	Btm (ftKB)	
SURFACE CASING CEMENT		8/27/2006		10.0	880.0	
PRODUCTION CASING CEMENT		9/1/2006		3,313.0	5,100.0	
PRODUCTION CASING CEMENT		9/1/2006		5,100.0	6,110.0	
Balance Plug		2/15/2018		6,562.0	6,946.0	
Proposed Cement						
Des				Top (ftKB)	Btm (ftKB)	
Dump Bail				6,500.0	6,525.0	
Balance Plug				4,000.0	4,610.0	
Courtesy Plug				2,000.0	2,500.0	
Courtesy Plug				2,402.0	2,500.0	
Courtesy Plug				2,270.0	2,400.0	
Shoe Plug				1,080.0	1,130.0	
Shoe Plug				650.0	1,080.0	
Shoe Plug				10.0	650.0	
Tubing Strings						
Tubing Description Tubing	Run Date 12/6/2006	String... 2 3/8	ID (in) 2.00	Wt (lb/ft) 4.70	Grade J-55	Len (ft) 6,914.00
Tubing Components						
Item Des	OD (in)	Wt (lb/ft)	Grade	Jts	Len (ft)	Btm (ftKB)
EUE 8rd Tubing	2 3/8	4.70	J-55	213	6,912.35	6,922.4
Seal Nipple	2 3/8			1	1.10	6,923.5
Notched collar	2 3/8			1	0.55	6,924.0
Other In Hole						
Run Date	Des		OD (in)	Top (ftKB)	Btm (ftKB)	
12/5/2006	Cast Iron Flow Through Plug		3.99	7,093.0	7,095.0	
Proposed Other In Hole						
Des		OD (in)	Top (ftKB)	Btm (ftKB)		
Cast Iron Bridge Plug		4	6,525.0	6,527.0		

Well Name: WASTE MANAGEMENT 31-35

VERTICAL - ORIGINAL HOLE, 6/13/2018 3:18:10 PM



Proposed Other In Hole

Des	OD (in)	Top (ftKB)	Btm (ftKB)
Cement Retainer	4	2,400.0	2,402.0

Logs

Date	Type	Top, MD (ftKB)	Btm, MD (ftKB)
9/1/2006	COMPENSATED DENSITY	2,700.0	7,088.0
9/1/2006	INDUCTION	860.0	7,108.0
9/11/2006	CEMENT BOND	3,175.0	7,071.0
3/14/2018	GYRO	10.0	6,100.0

Perforation Data

Linked Zone	Sum of Entered Shot Total	Top (ftKB)	Btm (ftKB)	Date
NIOBRARA, ORIGINAL HOLE	96	6,712.00	6,728.00	10/24/2006
CODELL, ORIGINAL HOLE	52	6,946.00	6,959.00	9/11/2006
Total (Sum)	148			

Job Supply Amounts

Supply Item Des	Type	Uni...	Job Category	Total...	Total...	Total...