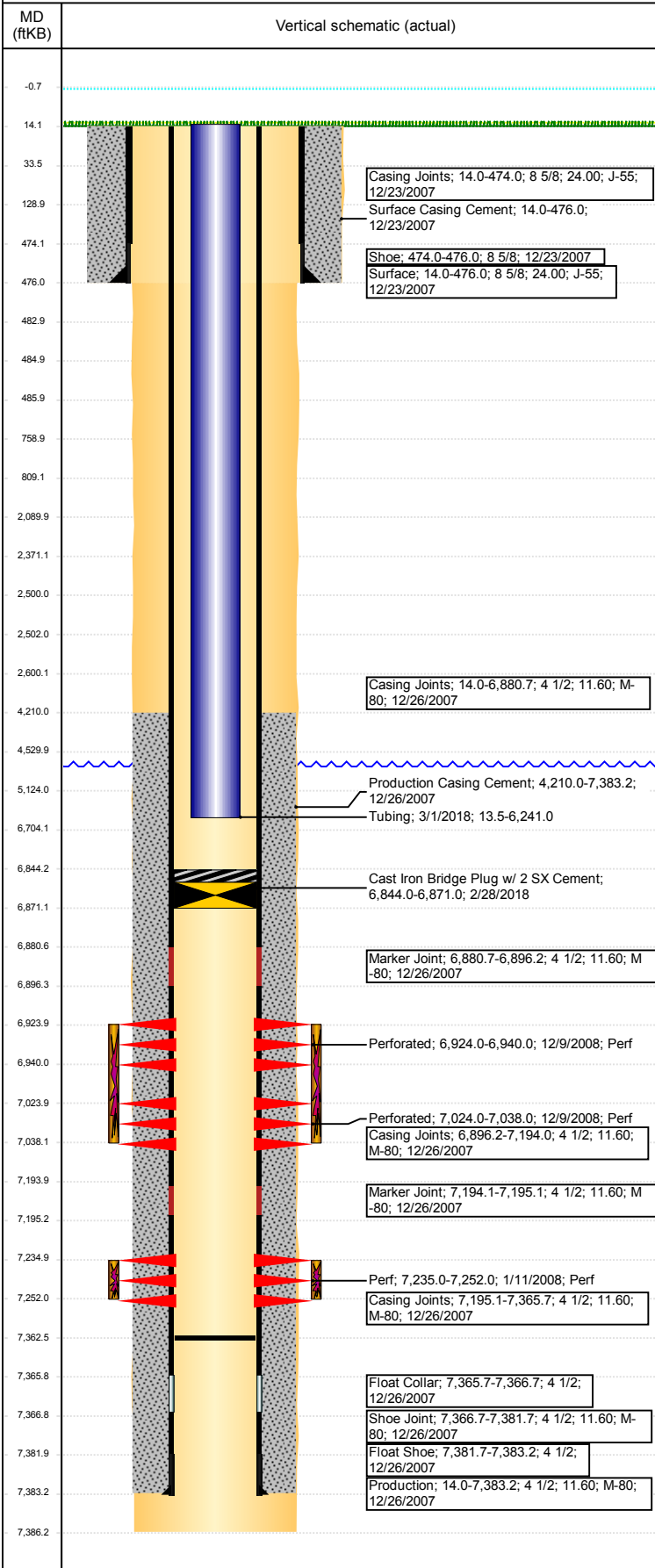


Well Name: RICHARDSON K17-14X

VERTICAL - ORIGINAL HOLE, 6/13/2018 3:17:32 PM



Well Header			
API	Well Report Center	Well Configuration Type	
05-123-26609	425661970	VERTICAL	
Original KB Elevation (ft)	KB - GL / MSL (ftKB)	Spud Date	P & A Date
4,756	14.00	12/22/2007	
Production Route	Well Production Status		SoRT Ignore
Watt - A1-08	TA		Yes
Directions To Well		Actual Latitude (°)	Actual Longitude (°)
WCR 29 & HWY 256 (WCR 44), 1/2 MILE WEST, NORTH 1/10, WEST INTO.		40.30574490	-104.80398218
Comment			

Congressional Location					
Quarter 3	Quarter 4	Section	Township	Twnshp N/S Dir	Range
SE	SW	17	4	N	66
Range E/W Dir			W		

Rig Operator	
Rig Operator	
RYAN FOOSE, RIG OPERATOR	

Plug Back Total Depths			
Date	Depth (ftKB)	Method	Com
1/22/2009	7,362.5	TAG	CHASED 2ND CIFTP TO 7362.50' KB

Wellbore Sections			
Section Des	Size (in)	Act Top, MD (ftKB)	Act Btm, MD (ftKB)
SURFACE	12 1/4	14	476
PRODUCTION	7 7/8	476	7,386

Zone Statuses		
Zone Name	Status Date	Status
CODELL	9/22/2016	SI
NIOBRARA	12/20/2008	PR

Casing Strings						
Surface, 476.0ftKB						
Casing Description	Run Date	OD (in)	Wt/Len (l...)	Grade	Top, MD (ft...)	MD (ftKB)
Surface	12/23/2007	8 5/8	24.00	J-55	14.0	476.0

Production, 7,383.2ftKB						
Casing Description	Run Date	OD (in)	Wt/Len (l...)	Grade	Top, MD (ft...)	MD (ftKB)
Production	12/26/2007	4 1/2	11.60	M-80	14.0	7,383.2

Cement			
Des	Start Date	Top (ftKB)	Btm (ftKB)
Surface Casing Cement	12/23/2007	14.0	476.0
Production Casing Cement	12/26/2007	4,210.0	7,383.2

Proposed Cement			
Des	Top (ftKB)	Btm (ftKB)	
PA Plug	6,704.0	6,844.0	
PA Plug	4,530.0	5,124.0	
Elective (Above/Below CICR)	2,502.0	2,600.0	
	2,371.0	2,500.0	
Elective-Annular	2,090.0	2,600.0	
Shoe Plug	759.0	809.0	
	14.0	759.0	

Tubing Strings							
Tubing Description	Run Date	String...	ID (in)	Wt (lb/ft)	Grade	Len (ft)	Set De...
Tubing	3/1/2018	2 3/8	2.00	4.70	J-55	6,227.50	

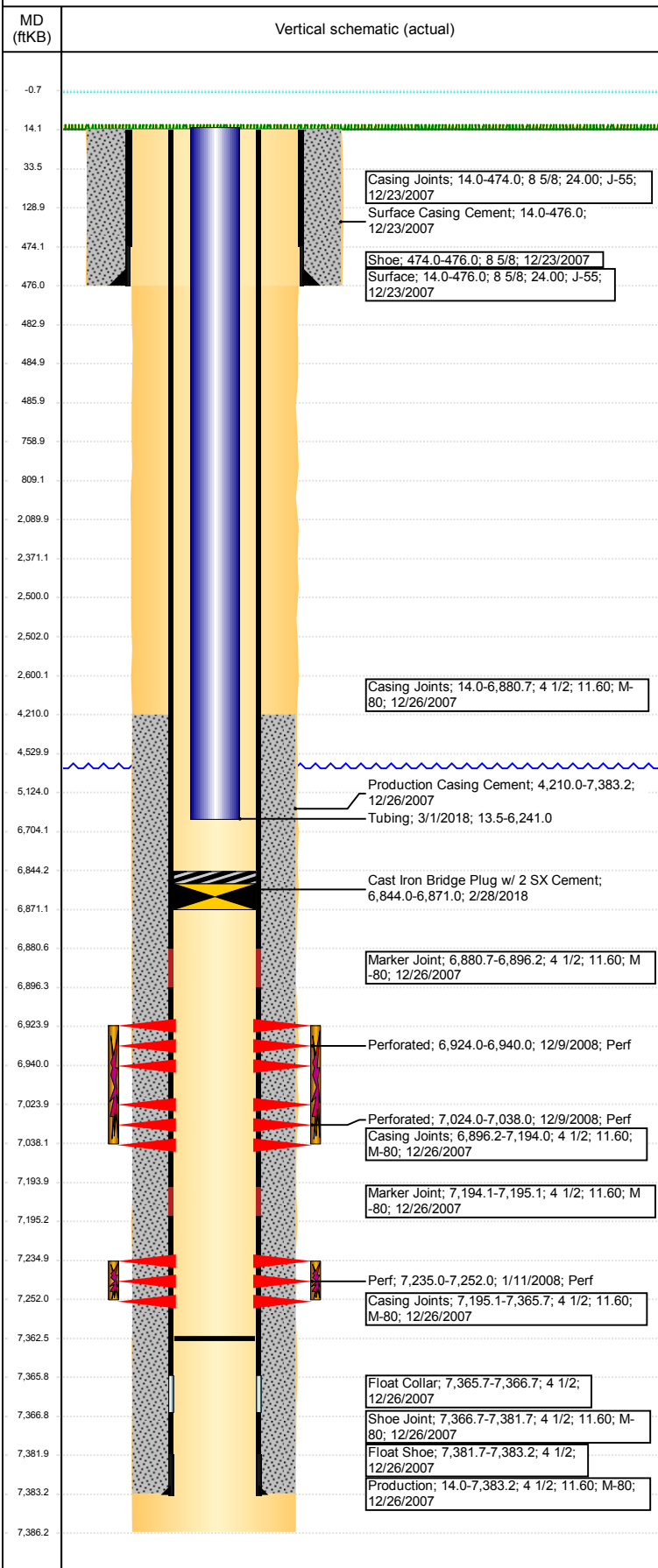
Tubing Components							
Item Des	OD (in)	Wt (lb/ft)	Grade	Jts	Len (ft)	Btm (ftKB)	Btm (TVD) (ftKB)
EUE 8rd Tubing	2 3/8	4.70	J-55	203	6,226.00	6,239.5	
Pump Seating Nipple	2 3/8	1.10		1	1.10	6,240.6	
Notched collar	2 3/8			1	0.40	6,241.0	

Other In Hole				
Run Date	Des	OD (in)	Top (ftKB)	Btm (ftKB)
2/28/2018	Cast Iron Bridge Plug w/ 2 SX Cement	4	6,844.0	6,871.0

Proposed Other In Hole			
Des	OD (in)	Top (ftKB)	Btm (ftKB)
Cement Retainer	4	2,500.0	2,502.0

Well Name: RICHARDSON K17-14X

VERTICAL - ORIGINAL HOLE, 6/13/2018 3:17:32 PM



Logs			
Date	Type	Top, MD (ftKB)	Btm, MD (ftKB)
12/26/2007	Caliper/Comp.Density/Neutron/GR/SP /ML	2,800.0	7,366.0
12/26/2007	DIL/GR/SP/Caliper	476.0	7,387.0
1/10/2008	CBL/CCL/GR	4,100.0	7,344.0
5/22/2018	GYRO	14.0	6,150.0

Perforation Data				
Linked Zone	Sum of Entered Shot Total	Top (ftKB)	Btm (ftKB)	Date
NIOBRARA, ORIGINAL HOLE	64	6,924.00	6,940.00	12/9/2008
NIOBRARA, ORIGINAL HOLE	56	7,024.00	7,038.00	12/9/2008
CODELL, ORIGINAL HOLE	68	7,235.00	7,252.00	1/11/2008
Total (Sum)	188			

Proposed Perforations				
Linked Zone	Sum of En...	Top Depth (ftKB)	Btm (ftKB)	Date
	0	2,600.00	2,600.00	3/29/2018
Total (Sum)	0			

Job Supply Amounts						
Supply Item Des	Type	Uni...	Job Category	Total...	Total...	Total...

Daily Cost Breakdown by Category		
Sum of Field Est...	Cost Description	Note
13,556.50	Downhole	RIG COST
2,250.00	Downhole	WSL COST
1,200.00	Downhole	TRUCKING
3,041.06	Downhole	WL COST
200.00	Downhole	DISPOSAL COST
400.00	Downhole	COMPLETION FLUID
500.00	Downhole	FRESH WATER
0.00	Cost Description	Note
21,147.56		