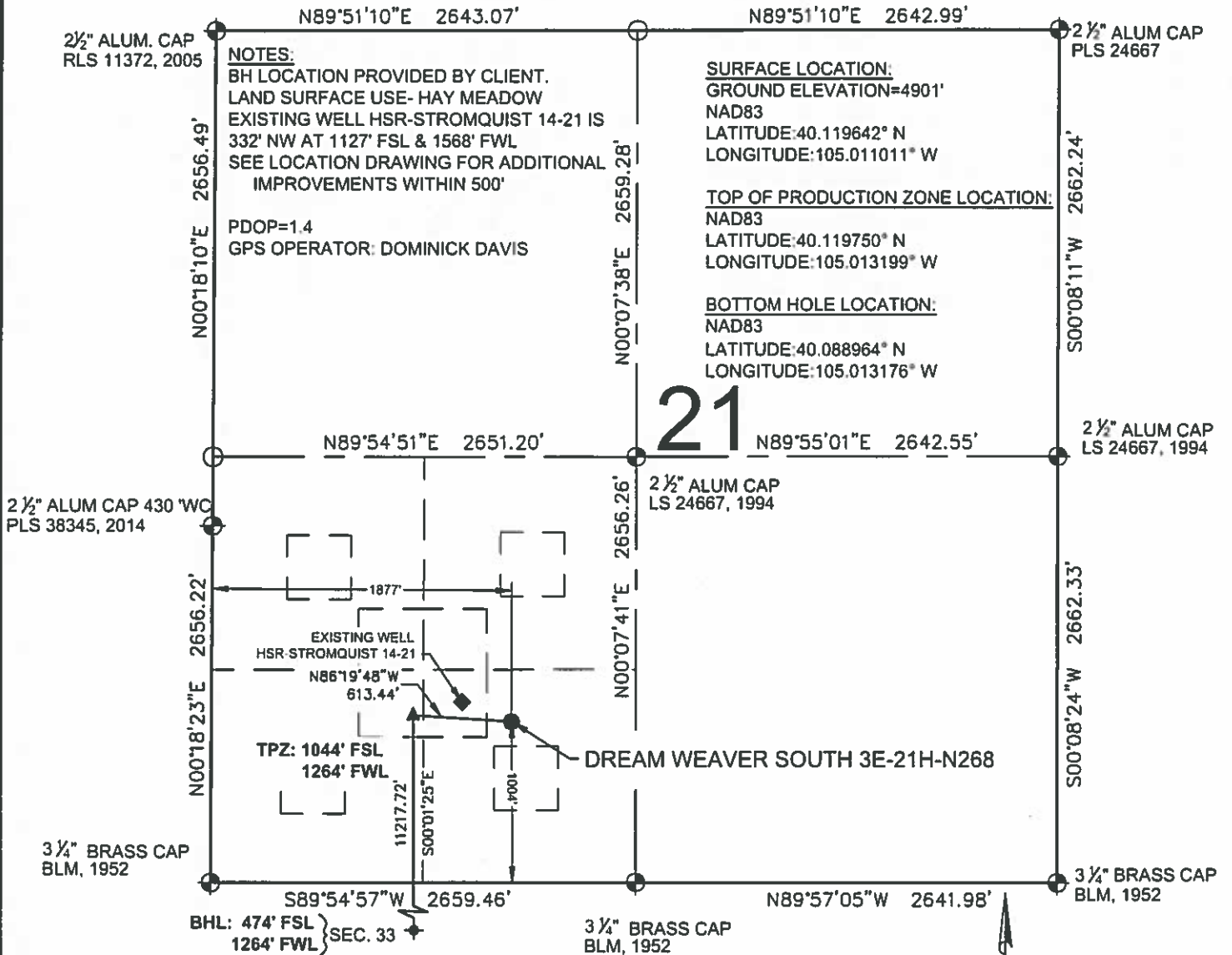


DREAM WEAVER SOUTH 3E-21H-N268 WELL LOCATION EXHIBIT



LEGEND

- ⊕ = EXISTING MONUMENT
- = CALCULATED POSITION
- = PROPOSED WELL
- ◆ = EXISTING WELL
- ⬆ = BOTTOM HOLE
- ▲ = TOP OF PRODUCTION ZONE
- TPZ = TOP OF PRODUCTION ZONE
- BHL = BOTTOM HOLE LOCATION
- WC = WITNESS CORNER

NOTES:

- THIS FIELD SURVEY CONFORMS TO THE MINIMUM STANDARDS SET BY THE C.O.G.C.C. RULE NO. 215
- ALL DISTANCES AND BEARINGS SHOWN HEREON ARE GROUND VALUES AS MEASURED IN THE FIELD, WITH TIES TO WELLS MEASURED PERPENDICULAR TO LINES SHOWN HEREON. THIS LOW DISTORTION PROJECTION (LDP) IS BASED ON THE NORTH AMERICAN DATUM OF 1983, U.S. SURVEY FOOT WITH A LATITUDE ORIGIN OF 40.131498°N, A CENTRAL MERIDIAN LONGITUDE OF 104.998741°W, AND A SCALE FACTOR ON THE CENTRAL MERIDIAN OF 1.000232 (EXACT). THE LDP BASIS OF BEARINGS IS GEODETIC NORTH.
- FIELD VERIFICATION OF MONUMENTS COMPLETED WITHIN 1 YEAR OF SIGNATURE DATE, UNLESS OTHERWISE NOTED.

WELL DREAM WEAVER SOUTH 3E-21H-N268 TO BE LOCATED 1004' FSL & 1877' FWL



I, ROBERT J. GUFFEY, A LICENSED PROFESSIONAL LAND SURVEYOR IN THE STATE OF COLORADO, DO HEREBY STATE TO **CRESTONE PEAK RESOURCES** THAT THE WELL LOCATION EXHIBIT SHOWN HEREON WAS PREPARED BY ME OR UNDER MY DIRECT SUPERVISION AND THE DRAWING SHOWN HEREON ACCURATELY DEPICTS THE PROPOSED LOCATION OF THE WELL. THIS EXHIBIT MEETS THE REQUIREMENTS OF A GIS LAND POSITION AS DEFINED BY SECTION 38-51-102 (7.5) C.R.S. AND AS SUCH PER SECTION 38-51-109.3 C.R.S. CANNOT BE RELIED UPON TO DETERMINE OWNERSHIP.

ROBERT J. GUFFEY, PLS 20680
COLORADO LICENSED PROFESSIONAL LAND SURVEYOR
FOR AND ON BEHALF OF P.F.S., LLC
d.b.a. ASCENT GEOMATICS SOLUTIONS

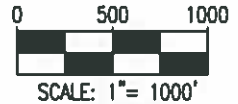
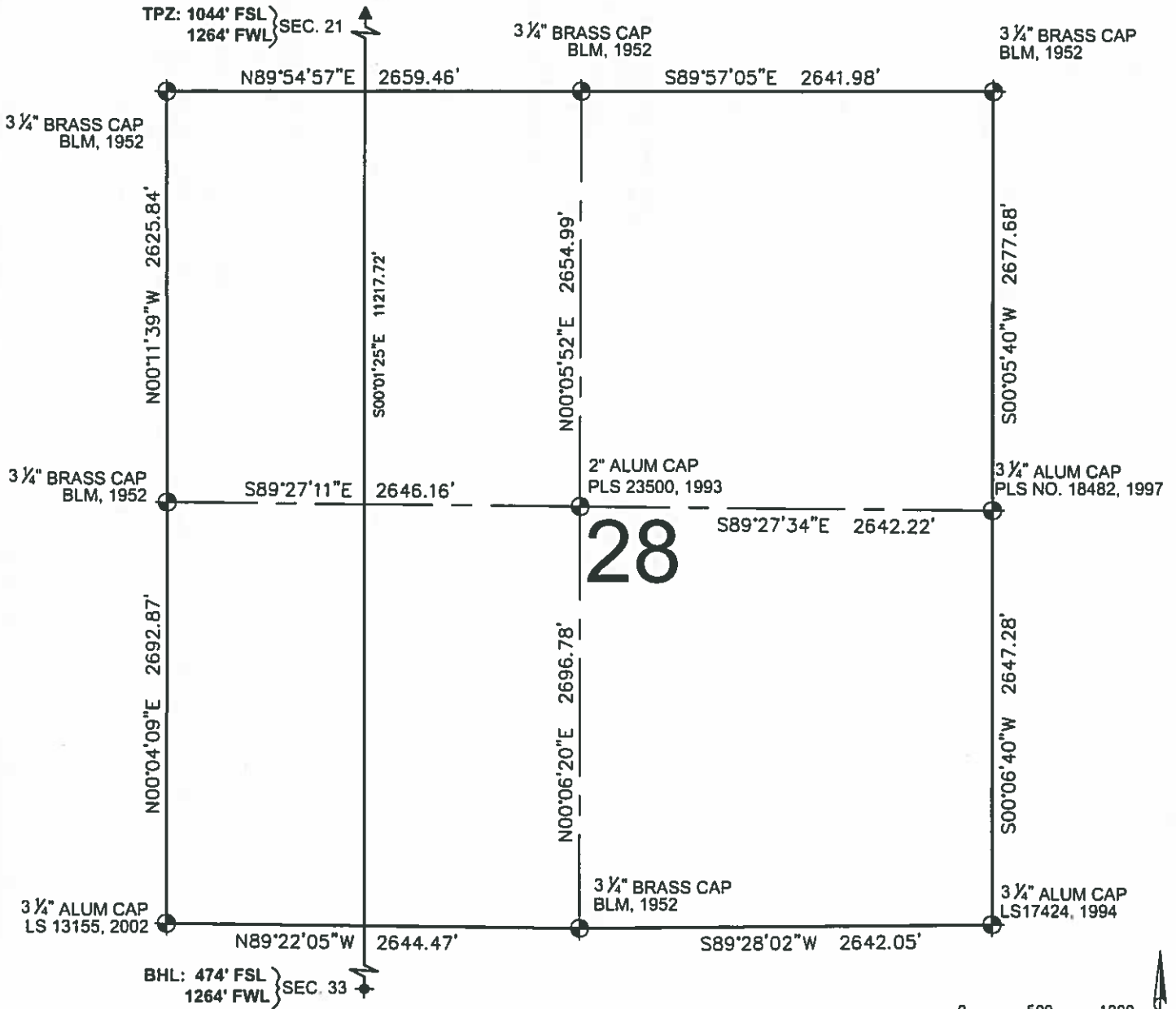


SHEET 1 OF 3

NOTICE: ACCORDING TO COLORADO LAW YOU MUST COMMENCE ANY LEGAL ACTION BASED UPON ANY DEFECT IN THIS SURVEY WITHIN THREE YEARS AFTER YOU FIRST DISCOVER SUCH DEFECT. IN NO EVENT MAY ANY ACTION BASED UPON ANY DEFECT IN THIS SURVEY BE COMMENCED MORE THAN TEN YEARS FROM THIS SAID DATE OF THIS CERTIFICATION SHOWN HEREON.

 <p>2535 Hilltop Circle Denver, CO 80221 (303) 928-7128 www.ascentgeomatics.com</p>	<p>FIELD DATE 02-13-18</p> <p>DRAWING DATE 04-12-18</p> <p>BY RMC</p>	<p>WELL NAME DREAM WEAVER SOUTH 3E-21H-N268</p> <p>SURFACE LOCATION SE 1/4 SW 1/4 SEC. 21, T2N, R68W, 6TH P.M. WELD COUNTY, COLORADO</p>	<p>PREPARED FOR:</p>  <p>CRESTONE PEAK RESOURCES</p>
---	---	--	---

DREAM WEAVER SOUTH 3E-21H-N268 WELL LOCATION EXHIBIT





LEGEND

- ⊙ = EXISTING MONUMENT
- = CALCULATED POSITION
- = PROPOSED WELL
- ◆ = EXISTING WELL
- ▲ = TOP OF PRODUCTION ZONE
- TPZ = TOP OF PRODUCTION ZONE
- BHL = BOTTOM HOLE LOCATION
- WC = WITNESS CORNER

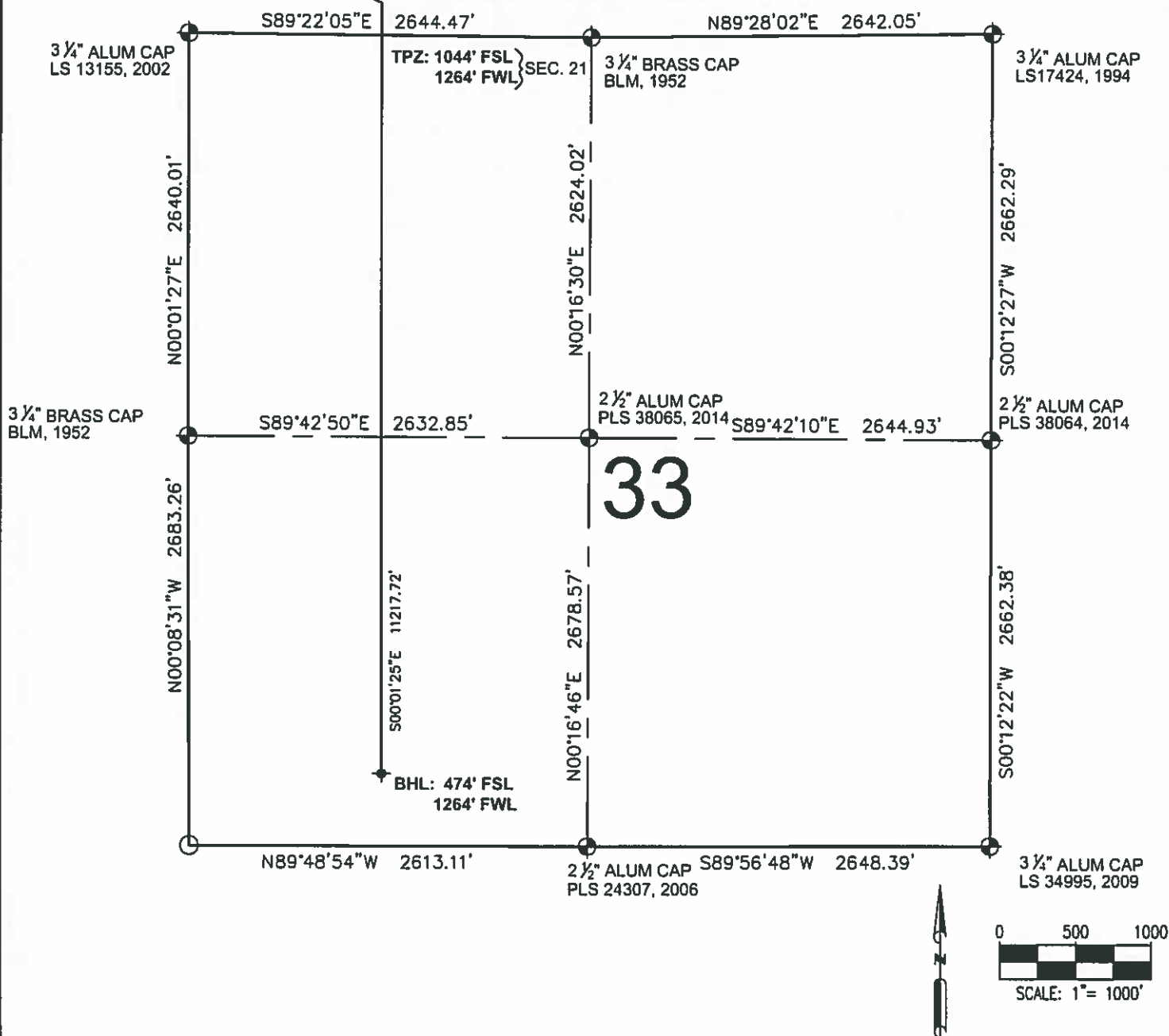
ROBERT J. GUFFEY, PLS 20680
COLORADO LICENSED PROFESSIONAL LAND SURVEYOR
FOR AND ON BEHALF OF P.F.S., LLC
d.b.a. ASCENT GEOMATICS SOLUTIONS



SHEET 2 OF 3

 <p>7535 N. I-70 Circle Denver, CO 80221 (303) 928-7128 www.ascentgeomatics.com</p>	<p>FIELD DATE: 02-13-18</p> <p>DRAWING DATE: 04-12-18</p> <p>BY: RMC</p> <p>CHECKED: CLP</p>	<p>WELL NAME: DREAM WEAVER SOUTH 3E-21H-N268</p> <p>SURFACE LOCATION: SE 1/4 SW 1/4 SEC. 21, T2N, R68W, 6TH P.M. WELD COUNTY, COLORADO</p>	<p>PREPARED FOR:</p>  <p>CRESTONE PEAK RESOURCES</p>
---	--	--	---

DREAM WEAVER SOUTH 3E-21H-N268 WELL LOCATION EXHIBIT





LEGEND

- ⊕ = EXISTING MONUMENT
- = CALCULATED POSITION
- = PROPOSED WELL
- ◆ = EXISTING WELL
- ⬆ = BOTTOM HOLE
- ▲ = TOP OF PRODUCTION ZONE
- TPZ = TOP OF PRODUCTION ZONE
- BHL = BOTTOM HOLE LOCATION
- WC = WITNESS CORNER

ROBERT J. GUFFEY, PLS 20680
COLORADO LICENSED PROFESSIONAL LAND SURVEYOR
FOR AND ON BEHALF OF P.F.S., LLC
d.b.a. ASCENT GEOMATICS SOLUTIONS



SHEET 3 OF 3

 <p>7535 Hilltop Circle Denver, CO 80221 303.928.7128 www.ascentgeomatics.com</p>	<p>FIELD DATE: 02-13-18</p> <p>DRAWING DATE: 04-12-18</p> <p>BY: RMC</p> <p>CHECKED: CLP</p>	<p>WELL NAME: DREAM WEAVER SOUTH 3E-21H-N268</p> <p>SURFACE LOCATION: SE 1/4 SW 1/4 SEC. 21, T2N, R68W, 6TH P.M. WELD COUNTY, COLORADO</p>	<p>PREPARED FOR:</p>  <p>CRESTONE PEAK RESOURCES</p>
---	--	--	---