

Crestone Peak Resources

DJ BASIN

S21-T2N-R68W

DREAM WEAVER South 3G-21H-N268

OH

PLAN #1

Anticollision Summary Report

17 April, 2018

Cathedral Energy Services

Anticollision Summary Report

Company:	Crestone Peak Resources	Local Co-ordinate Reference:	Well DREAM WEAVER South 3G-21H-N268 - Slot DREAM WEAVER South 3G-21H-N268 SHL
Project:	DJ BASIN	TVD Reference:	23' KB @ 4924.00usft (Original Well Elev)
Reference Site:	S21-T2N-R68W	MD Reference:	23' KB @ 4924.00usft (Original Well Elev)
Site Error:	0.00 usft	North Reference:	True
Reference Well:	DREAM WEAVER South 3G-21H-N268	Survey Calculation Method:	Minimum Curvature
Well Error:	0.00 usft	Output errors are at	2.00 sigma
Reference Wellbore	OH	Database:	USA EDM 5000 Multi Users DB
Reference Design:	PLAN #1	Offset TVD Reference:	Offset Datum

Reference	PLAN #1		
Filter type:	NO GLOBAL FILTER: Using user defined selection & filtering criteria		
Interpolation Method:	MD Interval 100.00usft	Error Model:	ISCWSA
Depth Range:	Unlimited	Scan Method:	Closest Approach 3D
Results Limited by:	Maximum center-center distance of 2,237.05 usft	Error Surface:	Pedal Curve
Warning Levels Evaluated at:	2.00 Sigma	Casing Method:	Not applied

Survey Tool Program	Date	3/22/2018		
From (usft)	To (usft)	Survey (Wellbore)	Tool Name	Description
0.00	2,000.00	PLAN #1 (OH)	VESSI_GYROFLEX	VESSI Gyroflex Gyro
2,001.00	19,088.92	PLAN #1 (OH)	MWD+HDGM	OWSG MWD + HDGM

Summary						
Site Name	Reference Measured Depth (usft)	Offset Measured Depth (usft)	Distance Between Centres (usft)	Distance Between Ellipses (usft)	Separation Factor	Warning
S21-T2N-R68W						
DREAM WEAVER North 3A-21H-N268 - OH - PLAN #1	200.00	200.00	206.43	205.94	421.003	CC, ES
DREAM WEAVER North 3A-21H-N268 - OH - PLAN #1	9,000.00	7,172.65	1,528.66	1,472.93	27.429	SF
DREAM WEAVER North 3B-21H-N268 - OH - PLAN #1	977.81	963.13	190.09	186.86	58.766	CC
DREAM WEAVER North 3B-21H-N268 - OH - PLAN #1	999.97	983.70	190.17	186.85	57.400	ES
DREAM WEAVER North 3B-21H-N268 - OH - PLAN #1	8,900.00	7,245.08	1,283.62	1,229.70	23.806	SF
DREAM WEAVER North 3C-21H-N268 - OH - PLAN #1	1,066.10	1,053.27	163.65	160.12	46.261	CC, ES
DREAM WEAVER North 3C-21H-N268 - OH - PLAN #1	8,700.00	7,200.00	1,086.92	1,037.43	21.964	SF
DREAM WEAVER North 3D-21H-N268 - OH - PLAN #1	1,170.10	1,161.10	133.71	129.81	34.292	CC, ES
DREAM WEAVER North 3D-21H-N268 - OH - PLAN #1	8,500.00	7,359.57	848.82	801.08	17.777	SF
DREAM WEAVER North 3E-21H-N268 - OH - PLAN #1	1,234.87	1,227.67	108.42	104.29	26.290	CC, ES
DREAM WEAVER North 3E-21H-N268 - OH - PLAN #1	7,576.43	8,108.75	516.21	471.75	11.610	SF
DREAM WEAVER North 3F-21H-N268 - OH - PLAN #1	1,275.33	1,268.57	89.58	85.32	21.035	CC, ES
DREAM WEAVER North 3F-21H-N268 - OH - PLAN #1	8,400.00	7,479.54	402.95	356.25	8.629	SF
DREAM WEAVER North 3G-21H-N268 - OH - PLAN #1	1,328.73	1,323.93	62.18	57.73	13.996	CC
DREAM WEAVER North 3G-21H-N268 - OH - PLAN #1	7,842.02	7,902.87	80.05	36.30	1.830	ES, SF
DREAM WEAVER North 3H-21H-N268 - OH - PLAN #1	1,355.53	1,351.32	42.92	38.39	9.466	CC, ES
DREAM WEAVER North 3H-21H-N268 - OH - PLAN #1	7,492.86	8,133.98	159.74	115.06	3.575	SF
DREAM WEAVER North 3I-21H-N268 - OH - PLAN #1	1,005.30	1,008.54	18.20	14.86	5.454	CC, ES, SF
DREAM WEAVER North 3J-21H-N268 - OH - PLAN #1	952.37	956.17	13.45	10.30	4.267	CC, ES, SF
DREAM WEAVER North 3K-21H-N268 - OH - PLAN #1	871.23	876.34	20.61	17.74	7.171	CC, ES, SF
DREAM WEAVER South 3A-21H-N268 - OH - PLAN #1	103.37	103.37	72.86	72.71	491.477	CC, ES
DREAM WEAVER South 3A-21H-N268 - OH - PLAN #1	19,088.92	19,287.83	1,364.81	992.08	3.662	SF
DREAM WEAVER South 3B-21H-N268 - OH - PLAN #1	103.38	103.38	60.71	60.57	409.479	CC, ES
DREAM WEAVER South 3B-21H-N268 - OH - PLAN #1	19,088.92	19,367.28	954.73	584.20	2.577	SF
DREAM WEAVER South 3C-21H-N268 - OH - PLAN #1	103.47	103.47	48.57	48.42	326.882	CC, ES
DREAM WEAVER South 3C-21H-N268 - OH - PLAN #1	19,088.92	19,090.64	1,058.99	688.64	2.859	SF
DREAM WEAVER South 3D-21H-N268 - OH - PLAN #1	200.00	200.00	36.43	35.94	74.295	CC, ES
DREAM WEAVER South 3D-21H-N268 - OH - PLAN #1	18,600.00	18,640.38	615.68	258.84	1.725	SF
DREAM WEAVER South 3E-21H-N268 - OH - PLAN #1	935.51	933.19	18.49	15.38	5.951	CC, ES
DREAM WEAVER South 3E-21H-N268 - OH - PLAN #1	19,088.92	19,013.28	396.30	32.48	1.089	Level 2, SF
DREAM WEAVER South 3F-21H-N268 - OH - PLAN #1	200.00	200.00	12.14	11.65	24.764	CC
DREAM WEAVER South 3F-21H-N268 - OH - PLAN #1	19,088.92	19,232.06	230.15	-87.76	0.724	Level 1, ES, SF
DREAM WEAVER South 3H-21H-N268 - OH - PLAN #1	737.39	737.89	8.50	6.13	3.584	CC
DREAM WEAVER South 3H-21H-N268 - OH - PLAN #1	18,843.81	18,746.55	199.22	-131.84	0.602	Level 1, ES, SF

CC - Min centre to center distance or convergent point, SF - min separation factor, ES - min ellipse separation

Cathedral Energy Services

Anticollision Summary Report

Company:	Crestone Peak Resources	Local Co-ordinate Reference:	Well DREAM WEAVER South 3G-21H-N268 - Slot DREAM WEAVER South 3G-21H-N268 SHL
Project:	DJ BASIN	TVD Reference:	23' KB @ 4924.00usft (Original Well Elev)
Reference Site:	S21-T2N-R68W	MD Reference:	23' KB @ 4924.00usft (Original Well Elev)
Site Error:	0.00 usft	North Reference:	True
Reference Well:	DREAM WEAVER South 3G-21H-N268	Survey Calculation Method:	Minimum Curvature
Well Error:	0.00 usft	Output errors are at	2.00 sigma
Reference Wellbore	OH	Database:	USA EDM 5000 Multi Users DB
Reference Design:	PLAN #1	Offset TVD Reference:	Offset Datum

Summary						
Site Name Offset Well - Wellbore - Design	Reference Measured Depth (usft)	Offset Measured Depth (usft)	Distance Between Centres (usft)	Distance Between Ellipses (usft)	Separation Factor	Warning
S21-T2N-R68W						
DREAM WEAVER South 3I-21H-N268 - OH - PLAN #1	654.37	656.00	20.22	18.14	9.703	CC, ES
DREAM WEAVER South 3I-21H-N268 - OH - PLAN #1	19,088.92	19,093.96	609.66	238.67	1.643	SF
DREAM WEAVER South 3J-21H-N268 - OH - PLAN #1	605.71	607.35	32.27	30.35	16.860	CC, ES
DREAM WEAVER South 3J-21H-N268 - OH - PLAN #1	19,088.92	19,240.76	796.67	430.01	2.173	SF
DREAM WEAVER South 3K-21H-N268 - OH - PLAN #1	516.94	518.59	45.23	43.63	28.166	CC, ES
DREAM WEAVER South 3K-21H-N268 - OH - PLAN #1	19,088.92	19,076.22	939.49	570.23	2.544	SF

Cathedral Energy Services

Anticollision Summary Report

Company:	Crestone Peak Resources	Local Co-ordinate Reference:	Well DREAM WEAVER South 3G-21H-N268 - Slot DREAM WEAVER South 3G-21H-N268 SHL
Project:	DJ BASIN	TVD Reference:	23' KB @ 4924.00usft (Original Well Elev)
Reference Site:	S21-T2N-R68W	MD Reference:	23' KB @ 4924.00usft (Original Well Elev)
Site Error:	0.00 usft	North Reference:	True
Reference Well:	DREAM WEAVER South 3G-21H-N268	Survey Calculation Method:	Minimum Curvature
Well Error:	0.00 usft	Output errors are at	2.00 sigma
Reference Wellbore	OH	Database:	USA EDM 5000 Multi Users DB
Reference Design:	PLAN #1	Offset TVD Reference:	Offset Datum

Summary						
Site Name Offset Well - Wellbore - Design	Reference Measured Depth (usft)	Offset Measured Depth (usft)	Distance Between Centres (usft)	Distance Between Ellipses (usft)	Separation Factor	Warning
S21-T2N-R68W (OFFSETS)						
ARTHUR STROMQUIST 2 - KMG WELL - GYRO	6,752.28	6,638.43	1,945.75	1,916.31	66.105	CC, ES
ARTHUR STROMQUIST 2 - KMG WELL - GYRO	7,000.00	6,887.41	1,980.48	1,949.98	64.923	SF
BLISS 41-21 - KPK WELL - SURVEYS						Out of range
BOULDER CREEK 9-4K8 - SNYDER OIL - NO SURVEY						Out of range
BROWN C UNIT 1 - CPR WELL - GYRO						Out of range
CANINO 1 - HUGHES C W-SOTEXCO 1 - NO SURVEY						Out of range
CHAMPLIN 41-4/1-68/ 1 - KMG WELL - NO SURVEYS						Out of range
CHAMPLIN 86 AMOCO B 2 - KPK WELL - NO SURVEY						Out of range
CHAMPLIN 86 AMOCO UT/Q 1 - KMG WELL - GYRO						Out of range
CHAMPLIN 86 AMOCO-B 1 - KPK WELL - NO SURVEY						Out of range
CHAMPLIN 86 AMOCO-B 3 - KPK WELL - NO SURVEY						Out of range
CHAMPLIN 86 AMOCO-B 4 - KPK WELL - NO SURVEY						Out of range
CHAMPLIN 86 AMOCO-B 5 - KPK WELL - NO SURVEY	17,599.15	6,100.00	2,232.18	2,083.15	14.979	CC
CHAMPLIN 86 AMOCO-B 5 - KPK WELL - NO SURVEY	17,600.00	6,100.00	2,232.18	2,083.14	14.977	ES
CHAMPLIN 86 AMOCO-B 5 - KPK WELL - NO SURVEY	17,700.00	6,100.00	2,234.45	2,084.21	14.872	SF
CHAMPLIN 86 AMOCO-B 6 - KPK WELL - NO SURVEY						Out of range
CHAMPLIN 86 AMOCO-F 5 - KPK WELL - NO SURVEY						Out of range
CHAMPLIN 86 AMOCO-O 9 - KMG WELL - GYRO	19,088.92	7,521.75	1,845.44	1,780.68	28.497	CC, ES, SF
CHAMPLIN32-4/1-68/ 2 - KMG WELL - NO SURVEYS						Out of range
CHMPLN 86 AMOCO-F 1 - KPK WELL - NO SURVEYS						Out of range
COLCLASURE 42-21 - KPK WELL - NO SURVEYS						Out of range
COOLEY 11-16 - KMG WELL - SURVEYS						Out of range
COOLEY 12-16 - KMG WELL - SURVEYS						Out of range
COOLEY 13-16 - KMG WELL - SURVEYS						Out of range
COOLEY 14-16 - KMG WELL - SURVEYS						Out of range
COOLEY 22-16 - KMG WELL - SURVEYS						Out of range
COOLEY 23-16 - KMG WELL - SURVEYS						Out of range
COOLEY 35-16 - KMG WELL - SURVEYS						Out of range
COPPER 31-15 - KMG WELL - SURVEYS						Out of range
CPC 31-4 (1-68) 3 - ANADARKO WELL - NO SURVEYS						Out of range
CPC 42-4 (1-68) 4 - ANADARKO WELL - NO SURVEYS						Out of range
DOMENICO 1 - NOBLE WELL - GYRO						Out of range
DUCKWORTH 31-16 - CPR WELL - GYRO						Out of range
DUCKWORTH 32-16 - CPR WELL - SURVEYS						Out of range
DUCKWORTH 33-16 - CPR WELL - SURVEYS						Out of range
DUCKWORTH 41-16 - CPR WELL - SURVEYS						Out of range
DUCKWORTH 43-16 - CPR WELL - GYRO						Out of range
DUCKWORTH 44-16 - CPR WELL - SURVEYS						Out of range
DUCKWORTH 6-0-16 - CPR WELL - SURVEYS						Out of range
DUCKWORTH B UNIT 1 - CPR WELL - GYRO						Out of range
DUCKWORTH B UNIT 2 - CPR WELL - GYRO						Out of range
EAST RINN 0-4-15 - CPR WELL - SURVEYS						Out of range
EAST RINN 13-15 - CPR WELL - SURVEYS						Out of range
EDITH ANN 1 - CPR WELL - GYRO						Out of range
EDITH ANN 33-21 - CPR WELL - GYRO	4,526.54	4,472.97	1,573.56	1,555.14	85.423	CC
EDITH ANN 33-21 - CPR WELL - GYRO	6,100.00	6,053.98	1,574.91	1,547.56	57.581	ES
EDITH ANN 33-21 - CPR WELL - GYRO	7,100.00	7,030.26	1,617.81	1,585.56	50.161	SF
EDITH ANN 34-21 - CPR WELL - GYRO	664.77	675.53	1,309.25	1,307.11	610.987	CC, ES
EDITH ANN 34-21 - CPR WELL - GYRO	8,600.00	7,389.03	1,501.31	1,461.97	38.156	SF
EDITH ANN 4-21 - CPR WELL - SURVEYS						Out of range
EDITH ANN 44-21 - CPR WELL - GYRO						Out of range

CC - Min centre to center distance or convergent point, SF - min separation factor, ES - min ellipse separation

Cathedral Energy Services

Anticollision Summary Report

Company:	Crestone Peak Resources	Local Co-ordinate Reference:	Well DREAM WEAVER South 3G-21H-N268 - Slot DREAM WEAVER South 3G-21H-N268 SHL
Project:	DJ BASIN	TVD Reference:	23' KB @ 4924.00usft (Original Well Elev)
Reference Site:	S21-T2N-R68W	MD Reference:	23' KB @ 4924.00usft (Original Well Elev)
Site Error:	0.00 usft	North Reference:	True
Reference Well:	DREAM WEAVER South 3G-21H-N268	Survey Calculation Method:	Minimum Curvature
Well Error:	0.00 usft	Output errors are at	2.00 sigma
Reference Wellbore	OH	Database:	USA EDM 5000 Multi Users DB
Reference Design:	PLAN #1	Offset TVD Reference:	Offset Datum

Summary						
Site Name Offset Well - Wellbore - Design	Reference Measured Depth (usft)	Offset Measured Depth (usft)	Distance Between Centres (usft)	Distance Between Ellipses (usft)	Separation Factor	Warning
S21-T2N-R68W (OFFSETS)						
EDITH ANN 6-8-21 - CPR WELL - SURVEYS	8,831.44	7,557.45	2,196.98	2,149.00	45.784	CC, ES
EDITH ANN 6-8-21 - CPR WELL - SURVEYS	9,200.00	7,555.24	2,227.68	2,176.30	43.356	SF
EDITH ANN 8-8-21 - CPR WELL - SURVEYS						Out of range
EDITH ANN-DUCKWORTH 4A-21H-O268 - CPR - FINAL	7,400.00	8,456.00	1,164.49	1,119.66	25.975	SF
EDITH ANN-DUCKWORTH 4A-21H-O268 - CPR - FINAL	7,586.47	8,346.21	1,156.56	1,112.15	26.043	CC, ES
EDITH ANN-DUCKWORTH 4B-21H-O268 - CPR - FINAL	7,200.00	8,804.69	1,549.74	1,500.99	31.792	SF
EDITH ANN-DUCKWORTH 4B-21H-O268 - CPR - FINAL	7,500.00	8,586.47	1,526.66	1,480.02	32.732	ES
EDITH ANN-DUCKWORTH 4B-21H-O268 - CPR - FINAL	8,562.94	7,410.16	1,524.24	1,484.67	38.521	CC
EDITH ANN-DUCKWORTH 4C-21H-O268 - CPR - FINA	7,100.00	8,558.74	2,043.09	1,995.17	42.636	SF
EDITH ANN-DUCKWORTH 4C-21H-O268 - CPR - FINA	7,500.00	8,313.18	2,022.88	1,977.74	44.812	ES
EDITH ANN-DUCKWORTH 4C-21H-O268 - CPR - FINA	7,501.41	8,312.32	2,022.88	1,977.75	44.821	CC
EDITH ANN-DUCKWORTH 4D-21H-O268 - CPR - FINA	749.45	849.96	2,176.71	2,174.06	821.972	CC
EDITH ANN-DUCKWORTH 4D-21H-O268 - CPR - FINA	7,300.00	8,656.43	2,236.65	2,189.26	47.194	SF
EDITH ANN-DUCKWORTH 4D-21H-O268 - CPR - FINA	8,500.00	7,479.99	2,194.89	2,155.39	55.563	ES
EDITH ANN-DUCKWORTH 4E-21H-O268 - CPR - FINAL	627.81	671.49	2,196.90	2,194.78	1,039.318	CC, ES
EDITH ANN-DUCKWORTH 4E-21H-O268 - CPR - FINAL	1,200.00	1,223.44	2,232.48	2,228.38	545.016	SF
EDITH ANN-DUCKWORTH 4F-21H-O268 - CPR - FINAL	363.98	395.49	2,210.20	2,209.03	1,885.610	CC
EDITH ANN-DUCKWORTH 4F-21H-O268 - CPR - FINAL	400.00	426.82	2,210.24	2,208.95	1,714.216	ES
EDITH ANN-DUCKWORTH 4F-21H-O268 - CPR - FINAL	900.00	821.76	2,235.36	2,232.49	779.631	SF
EDITH ANN-DUCKWORTH 4G-21H-O268 - CPR - FINA	203.81	235.33	2,211.14	2,210.52	3,573.679	CC, ES
EDITH ANN-DUCKWORTH 4G-21H-O268 - CPR - FINA	800.00	693.62	2,234.92	2,232.45	905.028	SF
EDITH ANN-DUCKWORTH 4H-21H-O268 - CPR - FINA	147.94	186.54	2,229.00	2,228.58	5,277.704	CC
EDITH ANN-DUCKWORTH 4H-21H-O268 - CPR - FINA	200.00	224.36	2,229.07	2,228.49	3,809.590	ES
EDITH ANN-DUCKWORTH 4H-21H-O268 - CPR - FINA	500.00	431.22	2,235.88	2,234.41	1,514.962	SF
ERIE CORP 42-4 - KMG WELL - NO SURVEYS						Out of range
EVERIST 12-10 - KMG WELL - SURVEYS						Out of range
EVERIST 12-10X - KMG WELL - NO SURVEYS						Out of range
EVERIST 13-10 - KMG WELL - SURVEYS						Out of range
EVERIST 33-10 - KMG WELL - SURVEYS						Out of range
FAIRVIEW 1 - EXTRACTION WELL - NO SURVEYS						Out of range
FAIRVIEW 3 - EXTRACTION O&G LLC - SURVEYS						Out of range
FAIRVIEW 4 - EXTRACTION O&G LLC - SURVEYS						Out of range
FAIRVIEW 5 - EXTRACTION O&G LLC - SURVEYS						Out of range
FILE 1-17 - CPR WELL - SURVEYS						Out of range
FILE 31-17 - CPR WELL - SURVEYS						Out of range
FILE 32-17 - CPR WELL - SURVEYS						Out of range
FILE 41-17 - CPR WELL - SURVEYS						Out of range
FILE 42-17 - CPR WELL - NO SURVEYS						Out of range
FILE 4-2-17 - CPR WELL - SURVEYS						Out of range
FILE 42-17X - CPR WELL - SURVEYS						Out of range
FILE 6-0-17 - CPR WELL - SURVEYS						Out of range
FILE 8-2-17 - CPR WELL - SURVEYS						Out of range
FREDERICKS 13-27 - KMG WELL - NO SURVEYS						Out of range
FREDERICKS 13-27X - KMG WELL - SURVEYS						Out of range
GARVER U 34-5JI - KMG WELL - NO SURVEYS						Out of range
HINGLEY 1 - KPK WELL - NO SURVEYS						Out of range
HINGLEY 2 - KPK WELL - NO SUREYS						Out of range
HSR-STROMQUIST 14-21 - KMG WELL - GYRO	7,778.62	7,391.93	125.63	91.60	3.692	CC, ES, SF
JACK A MLEYNEK 2 - KPK WELL - NO SURVEYS						Out of range
JACK MLEYNEK 1 - KPK WELL - NO SURVEYS						Out of range
JACK MLEYNEK 3 - KPK WELL - NO SURVEYS						Out of range

CC - Min centre to center distance or convergent point, SF - min separation factor, ES - min ellipse separation

Cathedral Energy Services

Anticollision Summary Report

Company:	Crestone Peak Resources	Local Co-ordinate Reference:	Well DREAM WEAVER South 3G-21H-N268 - Slot DREAM WEAVER South 3G-21H-N268 SHL
Project:	DJ BASIN	TVD Reference:	23' KB @ 4924.00usft (Original Well Elev)
Reference Site:	S21-T2N-R68W	MD Reference:	23' KB @ 4924.00usft (Original Well Elev)
Site Error:	0.00 usft	North Reference:	True
Reference Well:	DREAM WEAVER South 3G-21H-N268	Survey Calculation Method:	Minimum Curvature
Well Error:	0.00 usft	Output errors are at	2.00 sigma
Reference Wellbore	OH	Database:	USA EDM 5000 Multi Users DB
Reference Design:	PLAN #1	Offset TVD Reference:	Offset Datum

Summary						
Site Name	Reference Measured Depth (usft)	Offset Measured Depth (usft)	Distance Between Centres (usft)	Distance Between Ellipses (usft)	Separation Factor	Warning
S21-T2N-R68W (OFFSETS)						
JACK MLEYNEK 4 - KPK WELL - NO SURVEYS						Out of range
JACK MLEYNEK 5 - KPK WELL - NO SURVEYS						Out of range
JILLSON 0-6-22 - CPR WELL - SURVEYS						Out of range
JILLSON 1 - KPK WELL - NO SURVEYS						Out of range
JILLSON 11-22 - CPR WELL - GYRO						Out of range
JILLSON 12-22 - CPR WELL - GYRO						Out of range
JILLSON 14-22 - CPR WELL - GYRO						Out of range
JILLSON 3 - KPK WELL - NO SURVEYS						Out of range
JILLSON 5 - KPK WELL - NO SURVEYS						Out of range
JILLSON A 1 - KPK WELL - NO SURVEYS	600.00	575.99	1,428.76	1,426.82	734.144	CC, ES
JILLSON A 1 - KPK WELL - NO SURVEYS	5,500.00	5,430.90	1,853.46	1,830.24	79.806	SF
JILLSON A 2 - KPK WELL - NO SURVEYS	4,311.45	4,253.92	1,653.61	1,636.33	95.706	CC
JILLSON A 2 - KPK WELL - NO SURVEYS	4,800.00	4,737.72	1,655.00	1,635.01	82.763	ES
JILLSON A 2 - KPK WELL - NO SURVEYS	5,500.00	5,430.90	1,661.86	1,637.92	69.435	SF
JILLSON A 3 - KPK WELL - NO SURVEYS						Out of range
JILLSON A 4 - KPK WELL - NO SURVEYS						Out of range
JILLSON-EAST RINN 3A-22H-M268 - CPR WELL - SUR						Out of range
JILLSON-EAST RINN 3B-22H-M268 - CPR WELL - SUR						Out of range
JILLSON-EAST RINN 3C-22H-M268 - CPR WELL - SUR						Out of range
KENNEDY 1 - MACEY & MERSHON WELL - NO SURVE						Out of range
KENNEDY 31-21 - CPR WELL - GYRO						Out of range
KENNEDY 32-21 - CPR WELL - GYRO						Out of range
KENNEDY 41-21 - CPR WELL - GYRO						Out of range
KENNEDY 4-2-21 - CPR WELL - SURVEYS						Out of range
KENNEDY 6-0-21 - CPR WELL - SURVEYS						Out of range
KENNEDY 6-4-21 - CPR WELL - SURVEYS						Out of range
KENNEDY 8-0-21 - CPR WELL - SURVEYS						Out of range
KENNEDY GAS UNIT 1 - CPR WELL - GYRO						Out of range
LONGMONT 8-10K - TOP OPERATING WELL - NO SUR						Out of range
LONGMONT FARMS 1 - KPK WELL - NO SURVEYS						Out of range
LONGMONT FARMS 3 - KPK WELL - NO SURVEYS						Out of range
MAX SERAFINI 1 - KPK WELL - NO SURVEYS						Out of range
MAX SERAFINI C 1 - KPK WELL - NO SURVEYS						Out of range
MILES 1 - KPK WELL - NO SURVEYS						Out of range
MILES 33-3M - KMG WELL - GYRO	15,194.74	7,488.23	80.11	-57.47	0.582	Level 1, CC, ES, SF
MILES 4 - KPK WELL - NO SURVEYS						Out of range
MILES 5 - KPK WELL - NO SURVEYS						Out of range
MILES JOSEPHINE 1 - KPK WELL - NO SURVEYS						Out of range
MILES JOSEPHINE 2 - KPK WELL - NO SURVEYS						Out of range
MILES JOSEPHINE B 1 - KPK WELL - NO SURVEYS						Out of range
MILLER 12-27 - CPR WELL - GYRO						Out of range
MILTON NELSON 1 - KPK WELL - NO SURVEYS	5,063.54	4,960.00	491.05	467.37	20.740	CC, ES
MILTON NELSON 1 - KPK WELL - NO SURVEYS	5,100.00	4,960.00	492.40	468.46	20.570	SF
MILTON NELSON UN-C 1 - KPK WELL - NO SURVEYS	600.00	586.00	1,120.97	1,118.83	524.923	CC
MILTON NELSON UN-C 1 - KPK WELL - NO SURVEYS	999.97	984.67	1,121.65	1,117.91	300.301	ES
MILTON NELSON UN-C 1 - KPK WELL - NO SURVEYS	5,500.00	5,227.00	1,321.96	1,295.90	50.718	SF
MILTON NELSON UNIT 1 - KPK WELL - NO SURVEYS	600.00	584.00	366.98	364.83	170.976	CC, ES
MILTON NELSON UNIT 1 - KPK WELL - NO SURVEYS	5,100.00	4,977.00	966.92	943.91	42.020	SF
MLEYNEK 28-10M - KMG WELL - GYRO	12,852.98	7,415.91	2,227.05	2,126.23	22.090	CC
MLEYNEK 28-10M - KMG WELL - GYRO	12,900.00	7,414.11	2,227.55	2,126.06	21.950	ES
MLEYNEK 28-10M - KMG WELL - GYRO	13,000.00	7,410.33	2,231.89	2,129.12	21.717	SF

CC - Min centre to center distance or convergent point, SF - min separation factor, ES - min ellipse separation

Cathedral Energy Services

Anticollision Summary Report

Company:	Crestone Peak Resources	Local Co-ordinate Reference:	Well DREAM WEAVER South 3G-21H-N268 - Slot DREAM WEAVER South 3G-21H-N268 SHL
Project:	DJ BASIN	TVD Reference:	23' KB @ 4924.00usft (Original Well Elev)
Reference Site:	S21-T2N-R68W	MD Reference:	23' KB @ 4924.00usft (Original Well Elev)
Site Error:	0.00 usft	North Reference:	True
Reference Well:	DREAM WEAVER South 3G-21H-N268	Survey Calculation Method:	Minimum Curvature
Well Error:	0.00 usft	Output errors are at	2.00 sigma
Reference Wellbore	OH	Database:	USA EDM 5000 Multi Users DB
Reference Design:	PLAN #1	Offset TVD Reference:	Offset Datum

Summary						
Site Name Offset Well - Wellbore - Design	Reference Measured Depth (usft)	Offset Measured Depth (usft)	Distance Between Centres (usft)	Distance Between Ellipses (usft)	Separation Factor	Warning
S21-T2N-R68W (OFFSETS)						
MLEYNEK U 28-10JI - KMG WELL - GYRO	12,079.18	7,480.57	1,593.35	1,504.28	17.887	CC
MLEYNEK U 28-10JI - KMG WELL - GYRO	12,100.00	7,480.29	1,593.49	1,504.12	17.831	ES
MLEYNEK U 28-10JI - KMG WELL - GYRO	12,300.00	7,477.62	1,608.58	1,517.09	17.582	SF
MLEYNEK U 28-15JI - KMG WELL - GYRO	13,737.48	7,488.33	1,554.84	1,440.05	13.545	CC, ES
MLEYNEK U 28-15JI - KMG WELL - GYRO	13,900.00	7,488.15	1,563.31	1,446.73	13.409	SF
MORGAN-A 4 - KPK WELL - NO SURVEYS						Out of range
NELSON 42-33 /2-68/ 2 - ANADARKO WELL - NO SURV						Out of range
NELSON DUANE E 41-33 (2-68) 1 - CHAMPLIN PETRO						Out of range
NELSON DUANE E 41-33 (2-68) 1-X - KMG WELL - NO						Out of range
NELSON E UNIT 2 - CPR WELL - GYRO						Out of range
NELSON MILTON H 'D' 1 - KMG WELL - GYRO						Out of range
NELSON MILTON H 'M' 1 - KMG WELL - GYRO						Out of range
NELSON MILTON-F 1 - KPK WELL - NO SURVEYS						Out of range
NORTH RINN 0-4-9 - CPR WELL - SURVEYS						Out of range
NORTH RINN 0-6-9 - CPR WELL - SURVEYS						Out of range
NORTH RINN 0-8-9 - CPR WELL - SURVEYS						Out of range
NORTH RINN 13-9 - CPR WELL - SURVEYS						Out of range
NORTH RINN 14-9 - CPR WELL - SURVEYS						Out of range
NORTH RINN 24-9 - CPR WELL - SURVEYS						Out of range
NORTH RINN 2-4-9 - CPR WELL - SURVEYS						Out of range
NORTH RINN 2-6-9 - CPR WELL - SURVEYS						Out of range
OSKARSON 1 - HRM RES II LLC - NO SURVEYS						Out of range
OSKARSON 2 - ENERVEST OP - NO SURVEYS						Out of range
OSKARSON 24-33 - CPR WELL - GYRO	19,011.26	7,498.99	373.88	176.26	1.892	CC, ES, SF
OSKARSON 2-8-33 - CPR WELL - SURVEYS	19,088.92	7,600.32	442.88	328.41	3.869	CC, ES, SF
OSKARSON 3 - HRM RES II LLC - NO SURVEYS						Out of range
OSKARSON-E 1 - CPR WELL - GYRO	18,614.09	7,477.68	754.17	562.82	3.941	CC, ES, SF
OSKARSON-E 2 - CPR WELL - NO SURVEYS						Out of range
RASMUSSEN 3 - PETERSON ENERGY - GYRO						Out of range
RASMUSSEN 1 - PETERSON - GYRO	318.02	344.01	1,628.06	1,627.07	1,646.342	CC
RASMUSSEN 1 - PETERSON - GYRO	400.00	422.38	1,628.14	1,626.87	1,280.389	ES
RASMUSSEN 1 - PETERSON - GYRO	5,100.00	4,967.00	2,227.79	2,207.32	108.850	SF
RASMUSSEN 11-28 - CPR WELL - SURVEYS	9,464.13	7,731.21	884.35	815.88	12.916	CC, ES, SF
RASMUSSEN 12-28 - CPR WELL - SURVEYS	10,974.06	7,534.86	978.95	902.37	12.784	CC
RASMUSSEN 12-28 - CPR WELL - SURVEYS	11,000.00	7,534.62	979.29	902.24	12.710	ES
RASMUSSEN 12-28 - CPR WELL - SURVEYS	11,100.00	7,533.72	987.01	908.39	12.553	SF
RASMUSSEN 2 - PETERSON ENERGY - NO SURVEYS	600.00	612.00	2,167.29	2,165.08	982.586	CC, ES
RASMUSSEN 2 - PETERSON ENERGY - NO SURVEYS	1,300.00	1,307.78	2,231.80	2,226.78	444.345	SF
RASMUSSEN 21-28 - CPR WELL - GYRO	9,536.22	7,404.67	161.03	109.46	3.122	CC, ES, SF
RASMUSSEN 22-28 - CPR WELL - GYRO	10,874.66	7,434.95	59.91	-10.92	0.846	Level 1, CC, ES, SF
RASMUSSEN 2-4-28 - CPR WELL - SURVEYS	11,490.92	7,510.94	316.19	230.09	3.672	CC
RASMUSSEN 2-4-28 - CPR WELL - SURVEYS	11,500.00	7,510.36	316.32	229.94	3.662	ES, SF
RASMUSSEN 31-28 - CPR WELL - GYRO	9,510.39	7,421.46	1,584.26	1,533.12	30.980	CC, ES
RASMUSSEN 31-28 - CPR WELL - GYRO	9,900.00	7,423.99	1,631.46	1,576.34	29.602	SF
RASMUSSEN 32-28 32-28 - CPR WELL - GYRO	11,059.77	7,434.50	1,417.74	1,344.24	19.289	CC, ES
RASMUSSEN 32-28 32-28 - CPR WELL - GYRO	11,300.00	7,431.43	1,437.95	1,361.95	18.921	SF
RASMUSSEN 4-0-28 - CPR WELL - SURVEYS	8,943.33	7,864.08	1,013.27	944.34	14.701	CC, ES, SF
RASMUSSEN 41-28 - CPR WELL - GYRO						Out of range
RASMUSSEN 42-28 - CPR WELL - SURVEYS						Out of range
RASMUSSEN 4-2-28 - CPR WELL - SURVEYS	10,223.70	7,573.92	1,040.69	972.33	15.223	CC, ES
RASMUSSEN 4-2-28 - CPR WELL - SURVEYS	10,300.00	7,573.44	1,043.49	974.80	15.192	SF

CC - Min centre to center distance or convergent point, SF - min separation factor, ES - min ellipse separation

Cathedral Energy Services

Anticollision Summary Report

Company:	Crestone Peak Resources	Local Co-ordinate Reference:	Well DREAM WEAVER South 3G-21H-N268 - Slot DREAM WEAVER South 3G-21H-N268 SHL
Project:	DJ BASIN	TVD Reference:	23' KB @ 4924.00usft (Original Well Elev)
Reference Site:	S21-T2N-R68W	MD Reference:	23' KB @ 4924.00usft (Original Well Elev)
Site Error:	0.00 usft	North Reference:	True
Reference Well:	DREAM WEAVER South 3G-21H-N268	Survey Calculation Method:	Minimum Curvature
Well Error:	0.00 usft	Output errors are at	2.00 sigma
Reference Wellbore	OH	Database:	USA EDM 5000 Multi Users DB
Reference Design:	PLAN #1	Offset TVD Reference:	Offset Datum

Summary						
Site Name Offset Well - Wellbore - Design	Reference Measured Depth (usft)	Offset Measured Depth (usft)	Distance Between Centres (usft)	Distance Between Ellipses (usft)	Separation Factor	Warning
S21-T2N-R68W (OFFSETS)						
RASMUSSEN 4-4-28 - CPR WELL - SURVEYS	11,564.37	7,546.47	937.25	848.44	10.554	CC
RASMUSSEN 4-4-28 - CPR WELL - SURVEYS	11,600.00	7,546.69	937.93	848.37	10.473	ES
RASMUSSEN 4-4-28 - CPR WELL - SURVEYS	11,700.00	7,547.32	947.01	855.86	10.390	SF
RASMUSSEN 44-29 - KPK WELL - NO SURVEYS						Out of range
RASMUSSEN 4-A - PETERSON ENERGY - GYRO	0.00	0.00	2,015.81			
RASMUSSEN 4-A - PETERSON ENERGY - GYRO	600.00	589.83	2,017.40	2,015.50	1,064.703	ES
RASMUSSEN 4-A - PETERSON ENERGY - GYRO	3,200.00	3,159.14	2,235.02	2,223.84	199.962	SF
RASMUSSEN C" 2" - CPR WELL - GYRO						Out of range
RASMUSSEN-C-UNIT 1 - CPR WELL - GYRO	10,053.95	7,418.26	788.70	730.00	13.435	CC, ES
RASMUSSEN-C-UNIT 1 - CPR WELL - GYRO	10,200.00	7,414.19	802.10	741.66	13.270	SF
RODGERS 1 - KPK WELL - NO SURVEYS						Out of range
SAUNDERS TRUST 8-2K8 - EXTRACTION WELL - NO						Out of range
SCHLAGEL 2 - EXTRACTION WELL - NO SURVEYS						Out of range
SERAFINI E MAX GU 1 - KMG WELL - GYRO						Out of range
SERAFINI-B 2 - KPK WELL - NO SURVEYS						Out of range
SHAW 1 - KPK WELL - NO SURVEYS						Out of range
SHAW 15-20 - KPK - SURVEYS						Out of range
SHAW 16-20 - KPK - SURVEYS						Out of range
STROMQUIST 1 - KPK WELL - NO SURVEYS						Out of range
STROMQUIST 11-21 - KMG WELL - GYRO	6,700.00	6,633.63	501.70	471.01	16.347	CC, ES
STROMQUIST 11-21 - KMG WELL - GYRO	6,800.00	6,731.75	507.14	475.97	16.271	SF
STROMQUIST 13-21 - KMG WELL - GYRO	8,353.22	7,433.45	723.93	686.32	19.248	CC, ES
STROMQUIST 13-21 - KMG WELL - GYRO	8,500.00	7,432.76	738.66	699.80	19.007	SF
STROMQUIST 22-21 - KMG WELL - SURVEYS	6,749.90	6,763.65	812.54	778.14	23.621	CC, ES
STROMQUIST 22-21 - KMG WELL - SURVEYS	6,900.00	6,927.32	825.22	790.08	23.486	SF
STROMQUIST 23-21 - KMG WELL - SURVEYS	642.16	634.78	379.86	377.52	161.967	CC, ES
STROMQUIST 23-21 - KMG WELL - SURVEYS	7,742.12	7,425.59	797.63	762.15	22.481	SF
STROMQUIST 34-21 - KMG WELL - SURVEYS	100.00	88.73	1,111.97	1,111.73	4,764.642	CC
STROMQUIST 34-21 - KMG WELL - SURVEYS	300.00	285.33	1,112.50	1,111.48	1,084.236	ES
STROMQUIST 34-21 - KMG WELL - SURVEYS	9,400.00	7,516.03	1,639.93	1,584.08	29.362	SF
STROMQUIST 35-21 - KMG WELL - SURVEYS	8,846.42	7,484.08	249.69	201.11	5.139	CC, ES
STROMQUIST 35-21 - KMG WELL - SURVEYS	8,900.00	7,483.79	255.37	205.19	5.089	SF
TRAVELERS 28-11M - KMG WELL - GYRO	12,644.67	7,440.36	314.17	216.41	3.214	CC, ES, SF
TRAVELERS U 28-13DI - KMG WELL - GYRO	13,547.23	7,483.55	1,067.94	956.25	9.562	CC, ES
TRAVELERS U 28-13DI - KMG WELL - GYRO	13,600.00	7,485.00	1,069.24	956.76	9.506	SF
UPRC 33-1M - KMG WELL - GYRO	15,284.88	7,553.40	2,207.75	2,068.57	15.862	CC
UPRC 33-1M - KMG WELL - GYRO	15,300.00	7,553.25	2,207.94	2,068.52	15.837	ES
UPRC 33-1M - KMG WELL - GYRO	15,600.00	7,550.41	2,230.40	2,087.73	15.634	SF
UPRR 43 PAN AM-B 7 - KPK WELL - NO SURVEYS						Out of range
WESTERN 3-21A - KMG WELL - GYRO						Out of range
WILDFLOWER 12-27 - KMG WELL - SURVEYS						Out of range
WILDFLOWER 33-27 - KMG WELL - SURVEYS						Out of range
WOOLEY UNIT 1 - KPK WELL - NO SURVEYS						Out of range

CC - Min centre to center distance or convergent point, SF - min separation factor, ES - min ellipse separation

Cathedral Energy Services

Anticollision Summary Report

Company:	Crestone Peak Resources	Local Co-ordinate Reference:	Well DREAM WEAVER South 3G-21H-N268 - Slot DREAM WEAVER South 3G-21H-N268 SHL
Project:	DJ BASIN	TVD Reference:	23' KB @ 4924.00usft (Original Well Elev)
Reference Site:	S21-T2N-R68W	MD Reference:	23' KB @ 4924.00usft (Original Well Elev)
Site Error:	0.00 usft	North Reference:	True
Reference Well:	DREAM WEAVER South 3G-21H-N268	Survey Calculation Method:	Minimum Curvature
Well Error:	0.00 usft	Output errors are at	2.00 sigma
Reference Wellbore	OH	Database:	USA EDM 5000 Multi Users DB
Reference Design:	PLAN #1	Offset TVD Reference:	Offset Datum

Summary

Site Name Offset Well - Wellbore - Design	Reference Measured Depth (usft)	Offset Measured Depth (usft)	Distance Between Centres (usft)	Distance Between Ellipses (usft)	Separation Factor	Warning
S32-T2N-R68W						
Anderson 22-32 - KPK WELL - NO SURVEYS						Out of range
Anderson 32-32 - CPR WELL - SURVEYS						Out of range
Anderson 41-32 - CPR - GYRO	14,709.16	7,329.41	2,208.93	2,079.32	17.043	CC, ES
Anderson 41-32 - CPR - GYRO	15,000.00	7,325.52	2,227.99	2,094.57	16.699	SF
Anderson 4-2-32 - CPR WELL - SURVEYS						Out of range
Anderson 6-4-32 - CPR WELL - SURVEYS						Out of range
Anderson Trust 1 - KPK - NO SURVEYS						Out of range
Anderson Trust 1 A - CPR WELL - GYRO						Out of range
Anderson Trust 2-A - CPR WELL - NO SURVEYS						Out of range
Anderson Trust 32-2 - CPR WELL - GYRO						Out of range
Anderson Trust 32-8 - CPR WELL - GYRO						Out of range
Anderson Trust C 1 - CPR WELL - SURVEYS						Out of range
Anderson Trust C Unit 2 - CPR WELL - GYRO						Out of range
Brown 22-5 - CPR WELL - GYRO						Out of range
Brown 31-5 - CPR WELL - SURVEYS						Out of range
Brown 41-5 - CPR WELL - SURVEYS						Out of range
Brown 5-3 - CPR WELL - GYRO						Out of range
Brown 5-5 - CPR WELL - GYRO						Out of range
Brown C Unit 1 - CPR WELL - GYRO						Out of range
Brown C Unit 2 - CPR WELL - GYRO						Out of range
Bryant 10-30 - KMG WELL - SURVEYS						Out of range
Bryant 16-30 - KMG WELL - SURVEYS						Out of range
Bryant 20-30 - KMG WELL - SURVEYS						Out of range
Bryant 23-30 - KMG WELL - SURVEYS						Out of range
Bryant 24-30 - KMG WELL - SURVEYS						Out of range
Bryant 33-29 - KMG WELL - SURVEYS						Out of range
Bryant 36-30 - KMG WELL - SURVEYS						Out of range
Bryant 8-30 - KMG WELL - SURVEYS						Out of range
Bryant Federal 37-30 - KMG WELL - SURVEYS						Out of range
Bulthaup 1-6 - KMG WELL - GYRO						Out of range
Bulthaup 16-6 - KMG WELL - SURVEYS						Out of range
Bulthaup 17-6 - KMG WELL - SURVEYS						Out of range
Bulthaup 24-6 - KMG WELL - SURVEYS						Out of range
Bulthaup 27-6 - KMG WELL - SURVEYS						Out of range
Bulthaup 39-6 - KMG WELL - SURVEYS						Out of range
Bulthaup 40-6 - KMG WELL - SURVEYS						Out of range
Bulthaup 8-6 - KMG WELL - GYRO						Out of range
Bulthaup 9-6 - KMG WELL - SURVEYS						Out of range
Canino 1-X - HUGHES CW - NO SURVEYS						Out of range
Champlin 86 Amoco F 6 - KPK - NO SURVEYS						Out of range
Champlin 86 N 1 - KMG WELL - GYRO						Out of range
Champlin Amoco 86 F 7 - KPK WELL - SURVEYS						Out of range
Cinque 1 - FOUNDATION WELL - NO SURVEYS						Out of range
Cinque 2 - FOUNDATION WELL - NO SURVEYS						Out of range
Cinque 4 - FOUNDATION WELL - NO SURVEYS						Out of range
FILE 3A-32H-K268 - OH - FINAL						Out of range
FILE 3B-32H-K268 - OH - FINAL						Out of range
FILE 3C-32H-K268 - OH - FINAL						Out of range
FILE 3D-32H-K268 - OH - FINAL						Out of range
FILE 3E-32H-K268 - OH - FINAL						Out of range
FILE 3F-32H-K268 - OH - FINAL						Out of range

CC - Min centre to center distance or convergent point, SF - min separation factor, ES - min ellipse separation

Cathedral Energy Services

Anticollision Summary Report

Company:	Crestone Peak Resources	Local Co-ordinate Reference:	Well DREAM WEAVER South 3G-21H-N268 - Slot DREAM WEAVER South 3G-21H-N268 SHL
Project:	DJ BASIN	TVD Reference:	23' KB @ 4924.00usft (Original Well Elev)
Reference Site:	S21-T2N-R68W	MD Reference:	23' KB @ 4924.00usft (Original Well Elev)
Site Error:	0.00 usft	North Reference:	True
Reference Well:	DREAM WEAVER South 3G-21H-N268	Survey Calculation Method:	Minimum Curvature
Well Error:	0.00 usft	Output errors are at	2.00 sigma
Reference Wellbore	OH	Database:	USA EDM 5000 Multi Users DB
Reference Design:	PLAN #1	Offset TVD Reference:	Offset Datum

Summary

Site Name Offset Well - Wellbore - Design	Reference Measured Depth (usft)	Offset Measured Depth (usft)	Distance Between Centres (usft)	Distance Between Ellipses (usft)	Separation Factor	Warning
S32-T2N-R68W						
FILE 3G-32H-K268 - OH - FINAL						Out of range
FILE 3H-32H-K268 - OH - FINAL						Out of range
FILE 3Q-32H-K268 - OH - FINAL						Out of range
FILE 3R-32H-K268 - OH - FINAL						Out of range
FILE 3S-32H-K268 - OH - FINAL						Out of range
FILE 3T-32H-K268 - OH - FINAL						Out of range
FILE FED 3I-32H-K268 - OH - FINAL						Out of range
FILE FED 3J-32H-K268 - OH - FINAL						Out of range
FILE FED 3K-32H-K268 - OH - FINAL						Out of range
FILE FED 3K-32H-K268 - OH - PLAN #4						Out of range
FILE FED 3L-32H-K268 - OH - FINAL						Out of range
FILE FED 3M-32H-K268 - OH - FINAL						Out of range
FILE FED 3N-32H-K268 - OH - FINAL						Out of range
FILE FED 3O-32H-K268 - OH - FINAL						Out of range
FILE FED 3P-32H-K268 - OH - FINAL						Out of range
Foster 33-5 - CPR WELL - SURVEYS						Out of range
Foster 43-5 - CPR WELL - SURVEYS						Out of range
Foster 4-5 - CPR WELL - SURVEYS						Out of range
Foster 4-6-5 - CPR WELL - SURVEYS						Out of range
Foster 6-4-5 - CPR - SURVEYS						Out of range
Foster 6-4-5X - CPR WELL - SURVEYS						Out of range
Foster 6-8-5 - CPR WELL - SURVEYS						Out of range
Foster 8-8-5 - CPR WELL - SURVEYS						Out of range
Foster E Unit 1 - CPR - GYRO						Out of range
Gene 11-5 - KERR-MCGEE - GYRO						Out of range
Hankins 1 - KPK WELL - NO SURVEYS						Out of range
Hauck 17-29 - KMG WELL - SURVEYS						Out of range
Hauck 24-29 - KMG WELL - SURVEYS						Out of range
Hauck 7-29 - KMG WELL - SURVEYS						Out of range
HSR-Bryant 9-30A - KMG WELL - GYRO						Out of range
HSR-Williams 10-20 - KMG WELL - GYRO						Out of range
HWY52 4A-32H-O268 - OH - FINAL						Out of range
HWY52 4B-32H-O268 - OH - FINAL						Out of range
HWY52 4C-32H-O268 - OH - FINAL						Out of range
HWY52 4D-32H-O268 - OH - FINAL						Out of range
HWY52 4E-32H-O268 - OH - FINAL						Out of range
HWY52 4F-32H-O268 - OH - FINAL						Out of range
HWY52 4G-32H-O268 - OH - FINAL						Out of range
HWY52 4H-32H-O268 - OH - FINAL						Out of range
HWY52 4I-32H-O268 - OH - FINAL	18,874.09	7,968.00	2,142.67	1,936.39	10.387	CC
HWY52 4I-32H-O268 - OH - FINAL	18,900.00	7,968.00	2,142.83	1,936.14	10.367	ES
HWY52 4I-32H-O268 - OH - FINAL	19,088.92	8,079.62	2,149.03	1,939.11	10.237	SF
HWY52 4J-32H-O268 - OH - FINAL	18,943.80	8,224.58	1,817.78	1,609.23	8.716	CC
HWY52 4J-32H-O268 - OH - FINAL	19,088.92	8,390.35	1,818.47	1,607.08	8.602	ES, SF
HWY52 4K-32H-O268 - OH - FINAL	19,084.74	8,206.17	1,667.57	1,456.38	7.896	CC
HWY52 4K-32H-O268 - OH - FINAL	19,088.92	8,208.02	1,667.57	1,456.31	7.893	ES, SF
HWY52 4L-32H-O268 - OH - FINAL						Out of range
HWY52 4M-32H-O268 - OH - FINAL						Out of range
HWY52 4N-32H-O268 - OH - FINAL						Out of range
HWY52 4O-32H-O268 - OH - FINAL						Out of range
HWY52 4P-32H-O268 - OH - FINAL						Out of range

CC - Min centre to center distance or convergent point, SF - min separation factor, ES - min ellipse separation

Cathedral Energy Services

Anticollision Summary Report

Company:	Crestone Peak Resources	Local Co-ordinate Reference:	Well DREAM WEAVER South 3G-21H-N268 - Slot DREAM WEAVER South 3G-21H-N268 SHL
Project:	DJ BASIN	TVD Reference:	23' KB @ 4924.00usft (Original Well Elev)
Reference Site:	S21-T2N-R68W	MD Reference:	23' KB @ 4924.00usft (Original Well Elev)
Site Error:	0.00 usft	North Reference:	True
Reference Well:	DREAM WEAVER South 3G-21H-N268	Survey Calculation Method:	Minimum Curvature
Well Error:	0.00 usft	Output errors are at	2.00 sigma
Reference Wellbore	OH	Database:	USA EDM 5000 Multi Users DB
Reference Design:	PLAN #1	Offset TVD Reference:	Offset Datum

Summary						
Site Name Offset Well - Wellbore - Design	Reference Measured Depth (usft)	Offset Measured Depth (usft)	Distance Between Centres (usft)	Distance Between Ellipses (usft)	Separation Factor	Warning
S32-T2N-R68W						
HWY52 4Q-32H-O268 - OH - FINAL						Out of range
HWY52 4R-32H-O268 - OH - FINAL						Out of range
HWY52 4S-32H-O268 - OH - FINAL						Out of range
HWY52 4T-32H-O268 - OH - FINAL						Out of range
HWY52 4U-32H-O268 - OH - FINAL	18,100.00	18,100.00	2,043.07	1,768.22	7.433	ES, SF
HWY52 4U-32H-O268 - OH - FINAL	18,489.76	8,189.11	2,032.56	1,831.04	10.086	CC
HWY52 4V-32H-O268 - OH - FINAL	14,683.17	12,092.00	1,936.68	1,745.75	10.143	CC
HWY52 4V-32H-O268 - OH - FINAL	17,900.00	17,900.00	1,952.74	1,662.78	6.735	ES, SF
HWY52 4W-32H-O268 - OH - FINAL	17,000.00	17,000.00	1,661.69	1,380.22	5.904	SF
HWY52 4W-32H-O268 - OH - FINAL	17,900.00	17,900.00	1,618.14	1,353.19	6.107	ES
HWY52 4W-32H-O268 - OH - FINAL	18,435.41	8,351.00	1,579.60	1,377.31	7.808	CC
Jack Hein Unit 1 - HS RESOURCES WELL - NO SURVE						Out of range
John Lamar 1 - KPK WELL - NO SURVEYS						Out of range
Johnson 32-30 - KPK WELL - NO SURVEYS						Out of range
Johnson 7-30A - KMG WELL - GYRO						Out of range
Kenneth Koch 1 - KPK WELL - NO SURVEYS						Out of range
Kenyon 34-19 - CPR WELL - SURVEYS						Out of range
Kenyon 4-8-19 - CPR WELL - SURVEYS						Out of range
Kenyon 8-4-19 - CPR WELL - SURVEYS						Out of range
Kenyon 8-6-19 - CPR WELL - SURVEYS						Out of range
Kenyon 8-8-19 - CPR WELL - SURVEYS						Out of range
Koch 41-6 - KPK WELL - NO SURVEYS						Out of range
Koch Kenneth E A-1 - KMG WELL - SURVEY						Out of range
Milton H Nelson H-1 - KMG WELL - GYRO						Out of range
Milton H Nelson I1 - KMG WELL - GYRO						Out of range
Milton H Nelson L1 - KMG WELL - GYRO						Out of range
Milton Nelson K1 - KMG WELL - GYRO						Out of range
Nelson 1 - TEXAS TEA - NO SURVEYS						Out of range
Nelson 1-A - TEXAS TEA WELL - NO SURVEYS						Out of range
Nelson 2 - TEXAS TEA WELL - NO SURVEYS						Out of range
Nelson 3 - TEXAS TEA WELL - NO SURVEYS						Out of range
Nelson 4 - TEXAS TEA WELL - NO SURVEYS						Out of range
Nelson 5 - TEXAS TEA WELL - NO SURVEYS						Out of range
Nelson D2 - KPK WELL - NO SURVEYS						Out of range
Nelson E Unit 1 - CPR WELL - GYRO						Out of range
Nelson E Unit 2 - CPR WELL - GYRO						Out of range
NOAA Federal 11-32 - CPR WELL - GYRO						Out of range
Oskarson 2-8-33 - CPR WELL - SURVEYS	19,088.92	7,600.33	446.47	324.75	3.668	CC, ES, SF
Oskarson 13-33 - CPR - GYRO	17,643.16	7,454.70	1,244.23	1,068.15	7.066	CC, ES
Oskarson 13-33 - CPR - GYRO	17,700.00	7,454.31	1,245.53	1,068.67	7.043	SF
Oskarson 23-33 - CPR WELL - GYRO	17,335.94	7,524.91	303.61	137.34	1.826	CC, ES, SF
Oskarson 4 - HRM - NO SURVEYS						Out of range
Oskarson 4-4-33 - CPR WELL - SURVEYS	16,900.00	7,974.91	936.20	750.69	5.046	SF
Oskarson 4-4-33 - CPR WELL - SURVEYS	16,943.09	7,974.33	935.21	750.09	5.052	CC, ES
Oskarson 4-6-33 - CPR WELL - SURVEYS	18,178.34	7,738.97	946.03	759.04	5.059	CC, ES, SF
Oskarson 4-8-33 - CPR WELL - SURVEYS	19,088.92	7,785.72	1,003.06	819.07	5.452	CC, ES, SF
Oskarson E Unit 1 - CPR WELL - GYRO	18,619.54	7,465.60	753.39	566.34	4.028	CC, ES, SF
Paquette 13-5 - KMG WELL - GYRO						Out of range
Paquette 14-5 - KERR-MCGEE - GYRO						Out of range
Rasmussen 10-29 - KMG WELL - SURVEYS						Out of range
Rasmussen 14-29 - KMG WELL - SURVEYS						Out of range

CC - Min centre to center distance or convergent point, SF - min separation factor, ES - min ellipse separation

Cathedral Energy Services

Anticollision Summary Report

Company:	Crestone Peak Resources	Local Co-ordinate Reference:	Well DREAM WEAVER South 3G-21H-N268 - Slot DREAM WEAVER South 3G-21H-N268 SHL
Project:	DJ BASIN	TVD Reference:	23' KB @ 4924.00usft (Original Well Elev)
Reference Site:	S21-T2N-R68W	MD Reference:	23' KB @ 4924.00usft (Original Well Elev)
Site Error:	0.00 usft	North Reference:	True
Reference Well:	DREAM WEAVER South 3G-21H-N268	Survey Calculation Method:	Minimum Curvature
Well Error:	0.00 usft	Output errors are at	2.00 sigma
Reference Wellbore	OH	Database:	USA EDM 5000 Multi Users DB
Reference Design:	PLAN #1	Offset TVD Reference:	Offset Datum

Summary

Site Name Offset Well - Wellbore - Design	Reference Measured Depth (usft)	Offset Measured Depth (usft)	Distance Between Centres (usft)	Distance Between Ellipses (usft)	Separation Factor	Warning
S32-T2N-R68W						
Rasmussen 16-29 - KMG WELL - SURVEYS						Out of range
Rasmussen 19-29 - KMG WELL - SURVEYS						Out of range
Rasmussen 20-29 - KMG WELL - SURVEYS						Out of range
Rasmussen 22-29 - KMG WELL - SURVEYS						Out of range
Rasmussen 23-29 - KMG WELL - SURVEYS						Out of range
Rasmussen 25-29 - KMG WELL - SURVEYS						Out of range
Rasmussen 36-29 - KMG WELL - SURVEYS						Out of range
Rasmussen 37-29 - KMG WELL - SURVEYS						Out of range
Rasmussen 39-29 - KMG WELL - SURVEYS	12,907.67	7,833.06	1,707.03	1,587.95	14.335	CC, ES
Rasmussen 39-29 - KMG WELL - SURVEYS	13,200.00	7,834.38	1,731.88	1,607.30	13.901	SF
Rasmussen Fed 35-29 - KMG WELL - SURVEYS						Out of range
Ray Nelson 0-4-32 - CPR WELL - SURVEYS						Out of range
Ray Nelson 12-32 - CPR WELL - GYRO						Out of range
Ray Nelson 13-32 - CPR WELL - SURVEYS						Out of range
Ray Nelson 14-32 - CPR WELL - SURVEYS						Out of range
Ray Nelson 23-32 - CPR WELL - GYRO						Out of range
Ray Nelson 24-32 - CPR WELL - SURVEYS						Out of range
Ray Nelson 2-4-32 - CPR WELL - SURVEYS						Out of range
Ray Nelson 33-32 - CPR WELL - SURVEYS						Out of range
Ray Nelson 34-32 - CPR WELL - SURVEYS						Out of range
Ray Nelson 44-32 - CPR WELL - SURVEYS						Out of range
Ray Nelson 4-4-32 - CPR WELL - SURVEYS						Out of range
Ray Nelson 4-6-32 - CPR WELL - SURVEYS						Out of range
Ray Nelson 8-8-32 - CPR WELL - SURVEYS	19,088.92	7,764.97	1,760.81	1,556.20	8.606	CC, ES, SF
Regnier Farms 32-19 - CPR WELL - GYRO						Out of range
Regnier Farms 33-19 - CPR WELL - GYRO						Out of range
Regnier Farms 42-19 - CPR WELL - GYRO						Out of range
Regnier Farms 43-19 - CPR WELL - SURVEYS						Out of range
Regnier Farms B 2 - CPR WELL - GYRO						Out of range
Regnier Farms B Unit 1 - CPR WELL - GYRO						Out of range
Sawdey Unit 2 - KMG WELL - GYRO						Out of range
Schriner 11-5 - KMG WELL - GYRO						Out of range
Schriner 12-5 - KMG WELL - GYRO						Out of range
SEC Four 12-4 - KMG WELL - SURVEYS						Out of range
SEC Four 13-4 - KMG WELL - SURVEYS						Out of range
SEC Four 14-4 - KMG WELL - SURVEYS						Out of range
SEC Four 21-4 - KMG WELL - SURVEYS	19,088.92	7,641.91	1,990.42	1,881.31	18.242	CC, ES, SF
SEC Four 22-4 - KMG WELL - SURVEYS						Out of range
SEC Four 31-4 - KMG WELL - SURVEYS						Out of range
SEC Four 32-4 - KMG WELL - SURVEYS						Out of range
SEC Four 33-4 - KMG WELL - SURVEYS						Out of range
SEC Four 3-4 - KMG WELL - SURVEYS	19,088.92	7,632.47	1,173.21	1,097.46	15.487	CC, ES, SF
SEC Four 35-4 - KMG WELL - SURVEYS						Out of range
SEC Four 4-4 - KMG WELL - SURVEYS	19,088.92	7,579.68	1,512.26	1,376.25	11.119	CC, ES, SF
SEC Four 5-4 - KMG WELL - SURVEYS						Out of range
SEC Four 6-4 - KMG WELL - SURVEYS						Out of range
Shaw 11-29A - KMG WELL - SURVEYS						Out of range
Shaw 12-29A - KMG - GYRO						Out of range
Shaw 15-20 - KPK - SURVEYS						Out of range
Shaw 16-20 - KPK - SURVEYS						Out of range
Tallgrass 1-8 - KMG - SURVEYS						Out of range

CC - Min centre to center distance or convergent point, SF - min separation factor, ES - min ellipse separation

Cathedral Energy Services

Anticollision Summary Report

Company:	Crestone Peak Resources	Local Co-ordinate Reference:	Well DREAM WEAVER South 3G-21H-N268 - Slot DREAM WEAVER South 3G-21H-N268 SHL
Project:	DJ BASIN	TVD Reference:	23' KB @ 4924.00usft (Original Well Elev)
Reference Site:	S21-T2N-R68W	MD Reference:	23' KB @ 4924.00usft (Original Well Elev)
Site Error:	0.00 usft	North Reference:	True
Reference Well:	DREAM WEAVER South 3G-21H-N268	Survey Calculation Method:	Minimum Curvature
Well Error:	0.00 usft	Output errors are at	2.00 sigma
Reference Wellbore	OH	Database:	USA EDM 5000 Multi Users DB
Reference Design:	PLAN #1	Offset TVD Reference:	Offset Datum

Summary						
Site Name	Reference Measured Depth (usft)	Offset Measured Depth (usft)	Distance Between Centres (usft)	Distance Between Ellipses (usft)	Separation Factor	Warning
S32-T2N-R68W						
Tallgrass 2-8 - KMG - SURVEYS						Out of range
Tallgrass 3-8 - KMG - SURVEYS						Out of range
Tallgrass 4-8 - KMG - SURVEYS						Out of range
Tallgrass 5-8 - KMG - SURVEYS						Out of range
Tallgrass 6-8 - KMG WELL - SURVEYS						Out of range
Williams 10-20 - KMG WELL - SURVEYS						Out of range
Williams 11-20 - KMG WELL - SURVEYS						Out of range
Williams 13-20 - KMG WELL - SURVEYS						Out of range
Williams 14-20 - KMG WELL - SURVEYS						Out of range
Williams 16-20 - KMG WELL - SURVEYS						Out of range
Williams 18-29 - KMG WELL - SURVEYS						Out of range
Williams 23-20 - KMG WELL - SURVEYS						Out of range
Williams 24-20 - KMG WELL - SURVEYS						Out of range
Williams 24-20X - KMG WELL - SURVEYS						Out of range
Williams 25-20 - KMG WELL - SURVEYS						Out of range
Williams 35-20 - KMG WELL - SURVEYS						Out of range
Williams 36-20 - KMG WELL - SURVEYS						Out of range
Williams 39-20 - KMG WELL - SURVEYS	7,605.66	7,571.99	1,641.54	1,601.44	40.937	CC, ES
Williams 39-20 - KMG WELL - SURVEYS	8,400.00	7,613.15	1,832.09	1,786.25	39.966	SF
Williams 4-29 - KMG WELL - SURVEYS						Out of range
Williams 7-20 - KMG WELL - SURVEYS						Out of range
Williams 8-20 - KMG WELL - SURVEYS						Out of range
Williams 9-20 - KMG WELL - SURVEYS						Out of range
Woolley 41-7 - CPR WELL - GYRO						Out of range
Woolley 42-7 KPK - KPK WELL - SURVEYS						Out of range

Cathedral Energy Services

Anticollision Summary Report

Company:	Crestone Peak Resources	Local Co-ordinate Reference:	Well DREAM WEAVER South 3G-21H-N268 - Slot DREAM WEAVER South 3G-21H-N268 SHL
Project:	DJ BASIN	TVD Reference:	23' KB @ 4924.00usft (Original Well Elev)
Reference Site:	S21-T2N-R68W	MD Reference:	23' KB @ 4924.00usft (Original Well Elev)
Site Error:	0.00 usft	North Reference:	True
Reference Well:	DREAM WEAVER South 3G-21H-N268	Survey Calculation Method:	Minimum Curvature
Well Error:	0.00 usft	Output errors are at	2.00 sigma
Reference Wellbore	OH	Database:	USA EDM 5000 Multi Users DB
Reference Design:	PLAN #1	Offset TVD Reference:	Offset Datum

Summary

Site Name Offset Well - Wellbore - Design	Reference Measured Depth (usft)	Offset Measured Depth (usft)	Distance Between Centres (usft)	Distance Between Ellipses (usft)	Separation Factor	Warning
S7-T1N-R68W (Woolley-S/B/Morgan Hills)						
BAILEY 8-8-1 (EXISTING) - CPR WELL - SURVEYS						Out of range
BEARDEN 0-6-6 (EXISTING) - CPR WELL - SURVEYS						Out of range
BEARDEN 1 (EXISTING) - CPR WELL - GYRO						Out of range
BEARDEN 13-6 (EXISTING) - CPR WELL - SURVEYS						Out of range
BEARDEN 14-6 (EXISTING) - CPR WELL - SURVEYS						Out of range
BEARDEN 23-6 (EXISTING) - ENCANA WELL - GYRO						Out of range
BEARDEN 24-6 (EXISTING) - CPR WELL - CPR WELL						Out of range
BEARDEN 2-4-6 (EXISTING) - CPR WELL - SURVEYS						Out of range
BEARDEN 2-8-6 (EXISTING) - CPR WELL - SURVEYS						Out of range
BECKY 1 (EXISTING) - FOUNDATION WELL - NO SUR						Out of range
BECKY 2-6 (EXISTING) - EXTRACTION WELL - GYRO						Out of range
BECKY 5-6 (EXISTING) - FOUNDATION WELL - NO SU						Out of range
BECKY 7-6 (EXISTING) - EXTRACTION WELL - GYRO						Out of range
BILLINGS 21-7 (EXISTING) - KPK WELL - SURVEYS						Out of range
BULTHAUP 10-6 (EXISTING) - KMG WELL - SURVEYS						Out of range
BULTHAUP 15-6 (EXISTING) - KMG WELL - GYRO						Out of range
BULTHAUP 17-6 (EXISTING) - KMG WELL - SURVEYS						Out of range
BULTHAUP 21-6 (EXISTING) - KMG WELL - SURVEYS						Out of range
BULTHAUP 23-6 (EXISTING) - KMG WELL - SURVEYS						Out of range
BULTHAUP 27-6 (EXISTING) - KMG WELL - SURVEYS						Out of range
CANYON CREEK 43-13 (EXISTING) - CPR WELL - SUR						Out of range
CANYON CREEK 8-6-13X (EXISTING) - CPR WELL - S						Out of range
CHAMPLIN-86-AMOCO 1 (EXISTING) - AMOCO - SURV						Out of range
COAL CREEK 6-0-19 (EXISTING) - CPR WELL - STK						Out of range
COAL CREEK 6-0-19 (EXISTING) - OH - SURVEYS						Out of range
COMMONS 28-19 (EXISTING) - KMG WELL - SURVEYS						Out of range
ERIE CHAMPLIN 18-9 (EXISTING) - EXISTING - SURVE						Out of range
ERIE CHAMPLIN B UNIT 1 - CPR WELL - GYRO						Out of range
ERIE CHAMPLIN B UNIT 2 - CPR WELL - GYRO						Out of range
I & J 7-6 (EXISTING) - KMG WELL - GYRO						Out of range
Morgan Hills 1A-7H-A168 - HZ - FINAL						Out of range
Morgan Hills 1B-7H-A168 - HZ - FINAL						Out of range
Morgan Hills 1C-7H-A168 - HZ - FINAL						Out of range
Morgan Hills 1D-7H-A168 - HZ - FINAL						Out of range
Morgan Hills 1E-7H-A168 - HZ - FINAL						Out of range
Morgan Hills 1F-7H-A168 - HZ - FINAL						Out of range
Morgan Hills 1G-7H-A168 - HZ - FINAL						Out of range
Morgan Hills 1H-7H-A168 - HZ - FINAL						Out of range
Morgan Hills 1I-7H-A168 - OH - FINAL						Out of range
SOSA 11-18 (EXISTING) - CPR WELL - SURVEYS						Out of range
SOSA 12-18 (EXISTING) - CPR WELL - SURVEYS						Out of range
SOSA 21-18 (EXISTING) - CPR WELL - SURVEYS						Out of range
SOSA 22-18 (EXISTING) - CPR WELL - SURVEYS						Out of range
SOSA A UNIT 1 (EXISTING) - CPR WELL - GYRO						Out of range
TALLGRASS 33-17 (EXISTING) - KMG WELL - SURVEY						Out of range
THOMAS 14-7(EXISTING) - CPR WELL - SURVEYS						Out of range
THOMAS 24-7 (EXISTING) - CPR WELL - SURVEYS						Out of range
THOMAS 2-8-7 (EXISTING) - CPR WELL - SURVEYS						Out of range
THOMAS 33-7 (EXISTING) - CPR WELL - SURVEYS						Out of range
THOMAS 7-12 (EXISTING) - CPR WELL - GYRO						Out of range
Thomas 7-14 (AL) - Existing - NO SURVEYS						Out of range

CC - Min centre to center distance or convergent point, SF - min separation factor, ES - min ellipse separation

Cathedral Energy Services

Anticollision Summary Report

Company:	Crestone Peak Resources	Local Co-ordinate Reference:	Well DREAM WEAVER South 3G-21H-N268 - Slot DREAM WEAVER South 3G-21H-N268 SHL
Project:	DJ BASIN	TVD Reference:	23' KB @ 4924.00usft (Original Well Elev)
Reference Site:	S21-T2N-R68W	MD Reference:	23' KB @ 4924.00usft (Original Well Elev)
Site Error:	0.00 usft	North Reference:	True
Reference Well:	DREAM WEAVER South 3G-21H-N268	Survey Calculation Method:	Minimum Curvature
Well Error:	0.00 usft	Output errors are at	2.00 sigma
Reference Wellbore	OH	Database:	USA EDM 5000 Multi Users DB
Reference Design:	PLAN #1	Offset TVD Reference:	Offset Datum

Summary						
Site Name Offset Well - Wellbore - Design	Reference Measured Depth (usft)	Offset Measured Depth (usft)	Distance Between Centres (usft)	Distance Between Ellipses (usft)	Separation Factor	Warning
S7-T1N-R68W (Woolley-S/B/Morgan Hills)						
THOMAS E UNIT 1 (EXISTING) - CPR WELL - GYRO						Out of range
THOMAS E UNIT 2 - VESSELS WELL - INC ONLY						Out of range
THOMAS K UNIT 1 (EXISTING) - EXISTING - NO SURV						Out of range
WHEELER G UNIT 1 - CPR - GYRO						Out of range
WIGGETT 13-1 - CPR - GYRO						Out of range
WIGGETT 8-2-13 (EXISTING) - CPR WELL - SURVEYS						Out of range
WOOLLEY 11-7 (EXISTING) - CPR WELL - SURVEYS						Out of range
WOOLLEY 12-7 (EXISTING) - CPR WELL - GYRO						Out of range
WOOLLEY 21-7 (EXISTING) - CPR WELL - GYRO						Out of range
WOOLLEY 22-7 (EXISTING) - CPR WELL - SURVEYS						Out of range
WOOLLEY 2-4-7 (EXISTING) - CPR WELL - SURVEYS						Out of range
WOOLLEY 4-0-7 (EXISTING) - CPR WELL - SURVEYS						Out of range
WOOLLEY 41-7 (EXISTING) - CPR WELL - GYRO						Out of range
WOOLLEY 42-7 (EXISTING) - CPR WELL - GYRO						Out of range
WOOLLEY 42-7 KPK (EXISTING) - KPK WELL - SURVE						Out of range
WOOLLEY A 1-7 (EXISTING) - CPR WELL - GYRO						Out of range
WOOLLEY F UNIT 1 (EXISTING) - CPR WELL - GYRO						Out of range
Woolley-Becky 2A-7H-E168 - Hz - FINAL						Out of range
Woolley-Becky 2B-7H-E168 - Hz - FINAL						Out of range
Woolley-Becky 2C-7H-E168 - Hz - FINAL						Out of range
Woolley-Becky 2D-7H-E168 - Hz - FINAL						Out of range
Woolley-Becky 2E-7H-E168 - Hz - FINAL						Out of range
Woolley-Becky 2F-7H-E168 - Hz - FINAL						Out of range
Woolley-Becky 2G-7H-E168 - Hz - FINAL						Out of range
Woolley-Becky 2H-7H-E168 - Hz - FINAL						Out of range
Woolley-Sosa 2A-7H-E168 - OH - FINAL						Out of range
Woolley-Sosa 2B-7H-E168 - HZ - FINAL						Out of range
Woolley-Sosa 2C-7H-E168 - HZ - FINAL						Out of range
Woolley-Sosa 2D-7H-E168 - HZ - FINAL						Out of range
Woolley-Sosa 2E-7H-E168 - HZ - FINAL						Out of range
Woolley-Sosa 2F-7H-E168 - HZ - FINAL						Out of range
Woolley-Sosa 2G-7H-E168 - HZ - FINAL						Out of range

Cathedral Energy Services

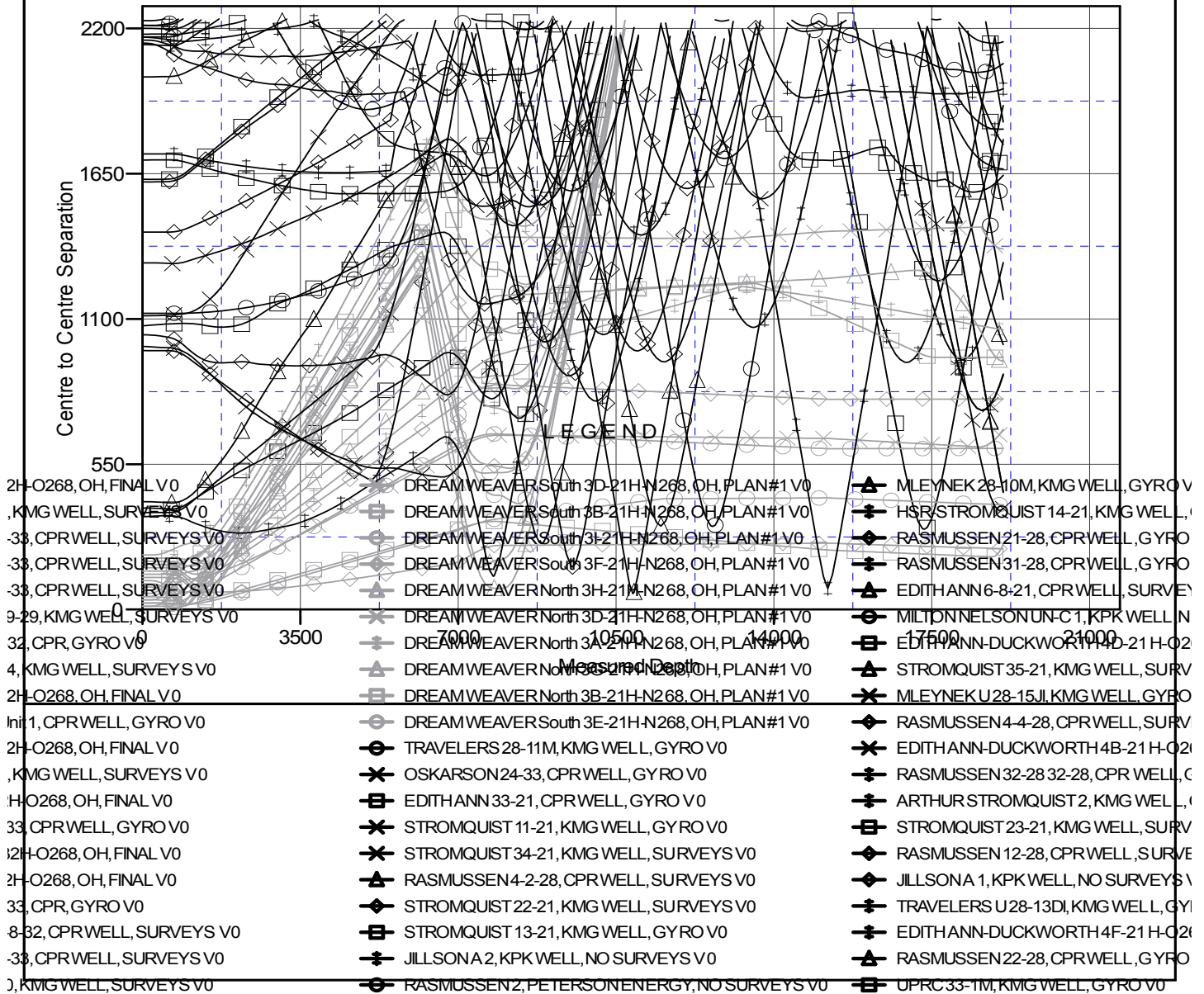
Anticollision Summary Report

Company:	Crestone Peak Resources	Local Co-ordinate Reference:	Well DREAM WEAVER South 3G-21H-N268 - Slot DREAM WEAVER South 3G-21H-N268 SHL
Project:	DJ BASIN	TVD Reference:	23' KB @ 4924.00usft (Original Well Elev)
Reference Site:	S21-T2N-R68W	MD Reference:	23' KB @ 4924.00usft (Original Well Elev)
Site Error:	0.00 usft	North Reference:	True
Reference Well:	DREAM WEAVER South 3G-21H-N268	Survey Calculation Method:	Minimum Curvature
Well Error:	0.00 usft	Output errors are at	2.00 sigma
Reference Wellbore	OH	Database:	USA EDM 5000 Multi Users DB
Reference Design:	PLAN #1	Offset TVD Reference:	Offset Datum

Reference Depths are relative to 23' KB @ 4924.00usft (Original Well E
Offset Depths are relative to Offset Datum
Central Meridian is -105.500000

Coordinates are relative to: DREAM WEAVER South 3G-21H-N268 - Slot DREAM
Coordinate System is US State Plane 1983, Colorado Northern Zone
Grid Convergence at Surface is: 0.32°

Ladder Plot



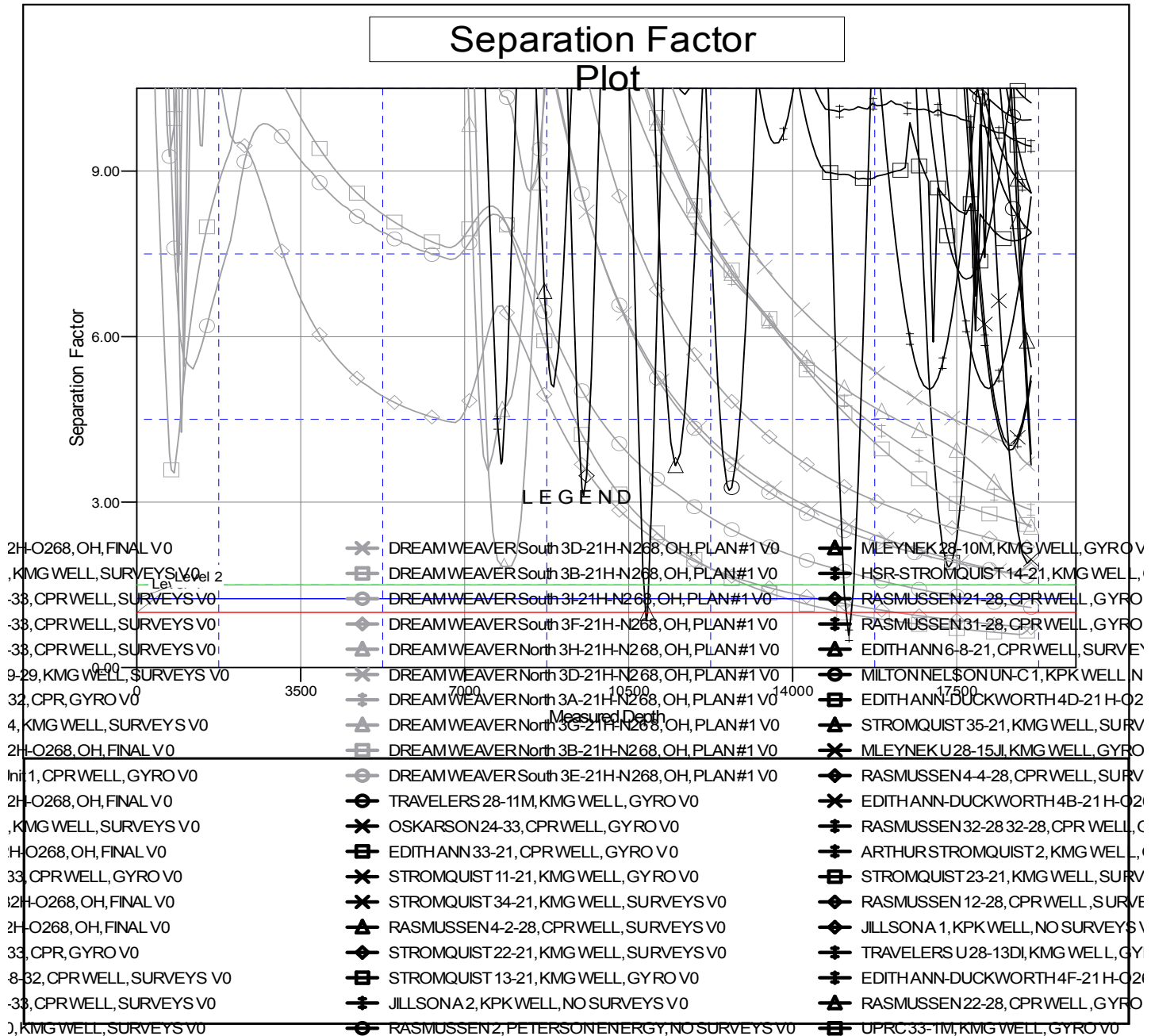
CC - Min centre to center distance or convergent point, SF - min separation factor, ES - min ellipse separation

Cathedral Energy Services
Anticollision Summary Report

Company:	Crestone Peak Resources	Local Co-ordinate Reference:	Well DREAM WEAVER South 3G-21H-N268 - Slot DREAM WEAVER South 3G-21H-N268 SHL
Project:	DJ BASIN	TVD Reference:	23' KB @ 4924.00usft (Original Well Elev)
Reference Site:	S21-T2N-R68W	MD Reference:	23' KB @ 4924.00usft (Original Well Elev)
Site Error:	0.00 usft	North Reference:	True
Reference Well:	DREAM WEAVER South 3G-21H-N268	Survey Calculation Method:	Minimum Curvature
Well Error:	0.00 usft	Output errors are at	2.00 sigma
Reference Wellbore	OH	Database:	USA EDM 5000 Multi Users DB
Reference Design:	PLAN #1	Offset TVD Reference:	Offset Datum

Reference Depths are relative to 23' KB @ 4924.00usft (Original Well E
Offset Depths are relative to Offset Datum
Central Meridian is -105.500000

Coordinates are relative to: DREAM WEAVER South 3G-21H-N268 - Slot DREAM
Coordinate System is US State Plane 1983, Colorado Northern Zone
Grid Convergence at Surface is: 0.32°



CC - Min centre to center distance or convergent point, SF - min separation factor, ES - min ellipse separation