



CRESTONE PEAK
RESOURCES

SECTION DETAILS

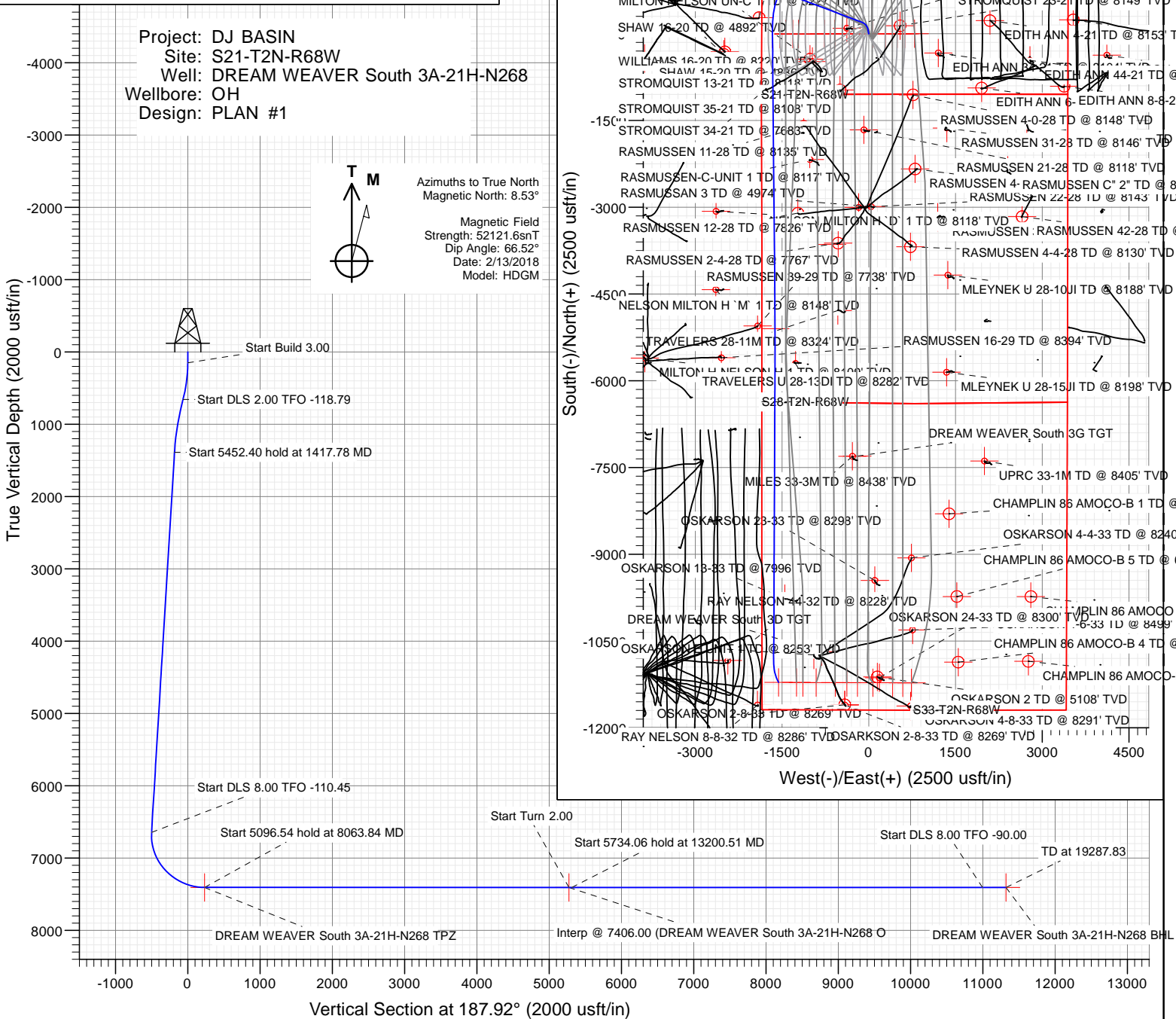
Sec	MD	Inc	Azi	TVD	+N/-S	+E/-W	Dleg	TFace	VSec	Target
1	0.00	0.00	0.00	0.00	0.00	0.00	0.00	0.00	0.00	
2	150.00	0.00	0.00	150.00	0.00	0.00	0.00	0.00	0.00	
3	662.67	15.38	350.00	656.53	67.36	-11.88	3.00	350.00	-65.08	
4	1417.78	15.38	290.61	1388.85	202.00	-123.67	2.00	-118.79	-183.04	
5	6870.19	15.38	290.61	6645.89	711.04	-1477.58	0.00	0.00	-500.70	
6	8063.84	90.00	179.46	7406.00	-3.68	-1665.88	8.00	-110.45	233.15	DREAM WEAVER South 3A-21H-N268 TPZ
7	13160.38	90.00	179.46	7406.00	-5100.00	-1617.63	0.00	0.00	5274.23	Interp @ 7406.00 (DREAM WEAVER South 3A-21H-N268 O
8	13200.51	90.00	180.26	7406.00	-5140.13	-1617.54	2.00	90.00	5313.96	
9	18934.58	90.00	180.26	7406.00	-10874.14	-1643.58	0.00	0.00	0996.88	
10	19287.83	90.00	152.00	7406.00	-11213.62	-1559.76	8.00	-90.00	1321.58	DREAM WEAVER South 3A-21H-N268 BHL

PLAN #1
DREAM WEAVER South 3A-21H-N268
23 KS @ 4924.00usft (Original Well Elev)
Ground Level @ 4901.00
North American Datum 1983
Well DREAM WEAVER South 3A-21H-N268 - Slot DREAM WEAVER South 3A-21H-N268 SHL, True North

Type	Target	Asimuth	Origin	Type	N/S	E/W	From	TVD
TD	No Target (Freehand)	187.92	Slot		0.00	0.00		0.00

Name	TVD	+N/-S	+E/-W	Latitude	Longitude
DREAM WEAVER South 3A-21H-N268 BHL	7406.00	-11213.62	-1559.76	40.088972	-105.016678
DREAM WEAVER South 3A-21H-N268 TPZ	7406.00	-3.68	-1665.88	40.119745	-105.017060
Interp @ 7406.00 (DREAM WEAVER South 3A-21H-N268 O	7406.00	-5100.00	-1617.63	40.105755	-105.016886

Project: DJ BASIN
Site: S21-T2N-R68W
Well: DREAM WEAVER South 3A-21H-N268
Wellbore: OH
Design: PLAN #1



WELL DETAILS: DREAM WEAVER South 3A-21H-N268

4901.00
+N/-S 0.00 +E/-W 0.00 Northing 1286847.74 Easting 3136724.98 Latitude 40.119755 Longitude -105.011103

CATHEDRAL



Cathedral Energy Services

Planning Report

Database:	USA EDM 5000 Multi Users DB	Local Co-ordinate Reference:	Well DREAM WEAVER South 3A-21H-N268 - SI
Company:	Crestone Peak Resources	TVD Reference:	23' KB @ 4924.00usft (Original Well Elev)
Project:	DJ BASIN	MD Reference:	23' KB @ 4924.00usft (Original Well Elev)
Site:	S21-T2N-R68W	North Reference:	True
Well:	DREAM WEAVER South 3A-21H-N268	Survey Calculation Method:	Minimum Curvature
Wellbore:	OH		
Design:	PLAN #1		

Project	DJ BASIN		
Map System:	US State Plane 1983	System Datum:	Mean Sea Level
Geo Datum:	North American Datum 1983		
Map Zone:	Colorado Northern Zone		

Site		S21-T2N-R68W			
Site Position:		Northing:	1,286,960.17 usft	Latitude:	40.120065
From:	Lat/Long	Easting:	3,136,653.11 usft	Longitude:	-105.011358
Position Uncertainty:	0.00 usft	Slot Radius:	13-3/16 "	Grid Convergence:	0.32 °

Well	DREAM WEAVER South 3A-21H-N268 - Slot DREAM WEAVER South 3A-21H-N268 SHL					
Well Position	+N/-S	0.00 usft	Northing:	1,286,847.74 usft	Latitude:	40.119755
	+E/-W	0.00 usft	Easting:	3,136,724.98 usft	Longitude:	-105.011103
Position Uncertainty		0.00 usft	Wellhead Elevation:	usft	Ground Level:	4,901.00 usft

Wellbore	OH				
Magnetics	Model Name	Sample Date	Declination (°)	Dip Angle (°)	Field Strength (nT)
	HDGM	2/13/2018	8.53	66.52	52,121.60000000

Design	PLAN #1			
Audit Notes:				
Version:	Phase:	PLAN	Tie On Depth:	0.00
Vertical Section:	Depth From (TVD) (usft)	+N/-S (usft)	+E/-W (usft)	Direction (°)
	0.00	0.00	0.00	187.92

Plan Sections										
Measured Depth (usft)	Inclination (°)	Azimuth (°)	Vertical Depth (usft)	+N/-S (usft)	+E/-W (usft)	Dogleg Rate (°/100usft)	Build Rate (°/100usft)	Turn Rate (°/100usft)	TFO (°)	Target
0.00	0.00	0.00	0.00	0.00	0.00	0.00	0.00	0.00	0.00	
150.00	0.00	0.00	150.00	0.00	0.00	0.00	0.00	0.00	0.00	
662.67	15.38	350.00	656.53	67.36	-11.88	3.00	3.00	0.00	350.00	
1,417.78	15.38	290.61	1,388.85	202.00	-123.67	2.00	0.00	-7.87	-118.79	
6,870.19	15.38	290.61	6,645.89	711.04	-1,477.58	0.00	0.00	0.00	0.00	
8,063.84	90.00	179.46	7,406.00	-3.68	-1,665.88	8.00	6.25	-9.31	-110.45	DREAM WEAVER So
13,160.38	90.00	179.46	7,406.00	-5,100.00	-1,617.63	0.00	0.00	0.00	0.00	Interp @ 7406.00 (DF
13,200.51	90.00	180.26	7,406.00	-5,140.13	-1,617.54	2.00	0.00	2.00	90.00	
18,934.58	90.00	180.26	7,406.00	-10,874.14	-1,643.58	0.00	0.00	0.00	0.00	
19,287.83	90.00	152.00	7,406.00	-11,213.62	-1,559.76	8.00	0.00	-8.00	-90.00	DREAM WEAVER So

Cathedral Energy Services

Planning Report

Database:	USA EDM 5000 Multi Users DB	Local Co-ordinate Reference:	Well DREAM WEAVER South 3A-21H-N268 - SI
Company:	Crestone Peak Resources	TVD Reference:	23' KB @ 4924.00usft (Original Well Elev)
Project:	DJ BASIN	MD Reference:	23' KB @ 4924.00usft (Original Well Elev)
Site:	S21-T2N-R68W	North Reference:	True
Well:	DREAM WEAVER South 3A-21H-N268	Survey Calculation Method:	Minimum Curvature
Wellbore:	OH		
Design:	PLAN #1		

Planned Survey

Measured Depth (usft)	Inclination (°)	Azimuth (°)	Vertical Depth (usft)	+N/-S (usft)	+E/-W (usft)	Vertical Section (usft)	Dogleg Rate (°/100usft)	Build Rate (°/100u)	Comments / Formations
0.00	0.00	0.00	0.00	0.00	0.00	0.00	0.00	0.00	
100.00	0.00	0.00	100.00	0.00	0.00	0.00	0.00	0.00	
150.00	0.00	0.00	150.00	0.00	0.00	0.00	0.00	0.00	
200.00	1.50	350.00	199.99	0.64	-0.11	-0.62	3.00	3.00	
300.00	4.50	350.00	299.85	5.80	-1.02	-5.60	3.00	3.00	
400.00	7.50	350.00	399.29	16.09	-2.84	-15.55	3.00	3.00	
500.00	10.50	350.00	498.04	31.49	-5.55	-30.43	3.00	3.00	
600.00	13.50	350.00	595.85	51.97	-9.16	-50.21	3.00	3.00	
662.67	15.38	350.00	656.53	67.36	-11.88	-65.08	3.00	3.00	
700.00	15.03	347.48	692.56	76.96	-13.79	-74.33	2.00	-0.93	
800.00	14.26	340.18	789.32	101.21	-20.77	-97.38	2.00	-0.78	
900.00	13.72	332.20	886.36	123.29	-30.48	-117.91	2.00	-0.53	
1,000.00	13.46	323.76	983.57	143.17	-42.90	-135.89	2.00	-0.26	
1,100.00	13.49	315.17	1,080.82	160.83	-58.01	-151.31	2.00	0.03	
1,200.00	13.81	306.79	1,178.01	176.26	-75.79	-164.13	2.00	0.32	
1,300.00	14.39	298.93	1,275.00	189.42	-96.23	-174.35	2.00	0.58	
1,400.00	15.22	291.79	1,371.69	200.30	-119.29	-181.96	2.00	0.82	
1,417.78	15.38	290.61	1,388.85	202.00	-123.67	-183.04	2.00	0.95	
1,500.00	15.38	290.61	1,468.12	209.68	-144.08	-187.83	0.00	0.00	
1,600.00	15.38	290.61	1,564.53	219.01	-168.91	-193.65	0.00	0.00	
1,700.00	15.38	290.61	1,660.95	228.35	-193.75	-199.48	0.00	0.00	
1,800.00	15.38	290.61	1,757.37	237.68	-218.58	-205.31	0.00	0.00	
1,900.00	15.38	290.61	1,853.78	247.02	-243.41	-211.13	0.00	0.00	
2,000.00	15.38	290.61	1,950.20	256.36	-268.24	-216.96	0.00	0.00	
2,100.00	15.38	290.61	2,046.62	265.69	-293.07	-222.78	0.00	0.00	
2,200.00	15.38	290.61	2,143.03	275.03	-317.90	-228.61	0.00	0.00	
2,300.00	15.38	290.61	2,239.45	284.37	-342.73	-234.44	0.00	0.00	
2,400.00	15.38	290.61	2,335.87	293.70	-367.57	-240.26	0.00	0.00	
2,500.00	15.38	290.61	2,432.28	303.04	-392.40	-246.09	0.00	0.00	
2,600.00	15.38	290.61	2,528.70	312.37	-417.23	-251.91	0.00	0.00	
2,700.00	15.38	290.61	2,625.12	321.71	-442.06	-257.74	0.00	0.00	
2,800.00	15.38	290.61	2,721.54	331.05	-466.89	-263.57	0.00	0.00	
2,900.00	15.38	290.61	2,817.95	340.38	-491.72	-269.39	0.00	0.00	
3,000.00	15.38	290.61	2,914.37	349.72	-516.56	-275.22	0.00	0.00	
3,100.00	15.38	290.61	3,010.79	359.05	-541.39	-281.04	0.00	0.00	
3,200.00	15.38	290.61	3,107.20	368.39	-566.22	-286.87	0.00	0.00	
3,300.00	15.38	290.61	3,203.62	377.73	-591.05	-292.70	0.00	0.00	
3,400.00	15.38	290.61	3,300.04	387.06	-615.88	-298.52	0.00	0.00	
3,500.00	15.38	290.61	3,396.45	396.40	-640.71	-304.35	0.00	0.00	
3,600.00	15.38	290.61	3,492.87	405.73	-665.54	-310.17	0.00	0.00	
3,700.00	15.38	290.61	3,589.29	415.07	-690.38	-316.00	0.00	0.00	
3,800.00	15.38	290.61	3,685.71	424.41	-715.21	-321.83	0.00	0.00	
3,900.00	15.38	290.61	3,782.12	433.74	-740.04	-327.65	0.00	0.00	
4,000.00	15.38	290.61	3,878.54	443.08	-764.87	-333.48	0.00	0.00	
4,100.00	15.38	290.61	3,974.96	452.41	-789.70	-339.30	0.00	0.00	
4,200.00	15.38	290.61	4,071.37	461.75	-814.53	-345.13	0.00	0.00	
4,300.00	15.38	290.61	4,167.79	471.09	-839.37	-350.96	0.00	0.00	
4,400.00	15.38	290.61	4,264.21	480.42	-864.20	-356.78	0.00	0.00	
4,500.00	15.38	290.61	4,360.62	489.76	-889.03	-362.61	0.00	0.00	
4,600.00	15.38	290.61	4,457.04	499.09	-913.86	-368.43	0.00	0.00	
4,700.00	15.38	290.61	4,553.46	508.43	-938.69	-374.26	0.00	0.00	
4,800.00	15.38	290.61	4,649.88	517.77	-963.52	-380.09	0.00	0.00	

Cathedral Energy Services

Planning Report

Database:	USA EDM 5000 Multi Users DB	Local Co-ordinate Reference:	Well DREAM WEAVER South 3A-21H-N268 - SI
Company:	Crestone Peak Resources	TVD Reference:	23' KB @ 4924.00usft (Original Well Elev)
Project:	DJ BASIN	MD Reference:	23' KB @ 4924.00usft (Original Well Elev)
Site:	S21-T2N-R68W	North Reference:	True
Well:	DREAM WEAVER South 3A-21H-N268	Survey Calculation Method:	Minimum Curvature
Wellbore:	OH		
Design:	PLAN #1		

Planned Survey

Measured Depth (usft)	Inclination (°)	Azimuth (°)	Vertical Depth (usft)	+N/-S (usft)	+E/-W (usft)	Vertical Section (usft)	Dogleg Rate (°/100usft)	Build Rate (°/100u)	Comments / Formations
4,900.00	15.38	290.61	4,746.29	527.10	-988.36	-385.91	0.00	0.00	
5,000.00	15.38	290.61	4,842.71	536.44	-1,013.19	-391.74	0.00	0.00	
5,100.00	15.38	290.61	4,939.13	545.77	-1,038.02	-397.56	0.00	0.00	
5,200.00	15.38	290.61	5,035.54	555.11	-1,062.85	-403.39	0.00	0.00	
5,300.00	15.38	290.61	5,131.96	564.45	-1,087.68	-409.22	0.00	0.00	
5,400.00	15.38	290.61	5,228.38	573.78	-1,112.51	-415.04	0.00	0.00	
5,500.00	15.38	290.61	5,324.79	583.12	-1,137.34	-420.87	0.00	0.00	
5,600.00	15.38	290.61	5,421.21	592.46	-1,162.18	-426.69	0.00	0.00	
5,700.00	15.38	290.61	5,517.63	601.79	-1,187.01	-432.52	0.00	0.00	
5,800.00	15.38	290.61	5,614.04	611.13	-1,211.84	-438.35	0.00	0.00	
5,900.00	15.38	290.61	5,710.46	620.46	-1,236.67	-444.17	0.00	0.00	
6,000.00	15.38	290.61	5,806.88	629.80	-1,261.50	-450.00	0.00	0.00	
6,100.00	15.38	290.61	5,903.30	639.14	-1,286.33	-455.82	0.00	0.00	
6,200.00	15.38	290.61	5,999.71	648.47	-1,311.17	-461.65	0.00	0.00	
6,300.00	15.38	290.61	6,096.13	657.81	-1,336.00	-467.48	0.00	0.00	
6,400.00	15.38	290.61	6,192.55	667.14	-1,360.83	-473.30	0.00	0.00	
6,500.00	15.38	290.61	6,288.96	676.48	-1,385.66	-479.13	0.00	0.00	
6,600.00	15.38	290.61	6,385.38	685.82	-1,410.49	-484.96	0.00	0.00	
6,700.00	15.38	290.61	6,481.80	695.15	-1,435.32	-490.78	0.00	0.00	
6,800.00	15.38	290.61	6,578.21	704.49	-1,460.15	-496.61	0.00	0.00	
6,870.19	15.38	290.61	6,645.89	711.04	-1,477.58	-500.70	0.00	0.00	
6,900.00	14.72	281.78	6,674.68	713.21	-1,484.99	-501.82	8.00	-2.24	
7,000.00	15.18	250.45	6,771.45	711.41	-1,509.81	-496.63	8.00	0.47	
7,100.00	19.23	226.82	6,867.07	695.73	-1,534.20	-477.74	8.00	4.05	
7,200.00	25.19	212.53	6,959.68	666.48	-1,557.69	-445.52	8.00	5.96	
7,300.00	32.00	203.70	7,047.47	624.21	-1,579.82	-400.61	8.00	6.81	
7,400.00	39.23	197.78	7,128.74	569.75	-1,600.16	-343.86	8.00	7.23	
7,500.00	46.67	193.47	7,201.90	504.16	-1,618.31	-276.40	8.00	7.44	
7,600.00	54.24	190.11	7,265.53	428.72	-1,633.93	-199.53	8.00	7.57	
7,700.00	61.89	187.34	7,318.39	344.90	-1,646.70	-114.75	8.00	7.65	
7,800.00	69.59	184.94	7,359.46	254.33	-1,656.38	-23.71	8.00	7.70	
7,900.00	77.31	182.77	7,387.93	158.76	-1,662.78	71.83	8.00	7.73	
8,000.00	85.05	180.73	7,403.25	60.07	-1,665.78	169.99	8.00	7.74	
8,063.84	90.00	179.46	7,406.00	-3.68	-1,665.88	233.15	8.00	7.75	DREAM WEAVER South 3A-21H-N268 TPZ
8,100.00	90.00	179.46	7,406.00	-39.85	-1,665.54	268.92	0.00	0.00	
8,200.00	90.00	179.46	7,406.00	-139.84	-1,664.59	367.84	0.00	0.00	
8,300.00	90.00	179.46	7,406.00	-239.84	-1,663.65	466.75	0.00	0.00	
8,400.00	90.00	179.46	7,406.00	-339.83	-1,662.70	565.66	0.00	0.00	
8,500.00	90.00	179.46	7,406.00	-439.83	-1,661.75	664.57	0.00	0.00	
8,600.00	90.00	179.46	7,406.00	-539.82	-1,660.81	763.48	0.00	0.00	
8,700.00	90.00	179.46	7,406.00	-639.82	-1,659.86	862.39	0.00	0.00	
8,800.00	90.00	179.46	7,406.00	-739.81	-1,658.91	961.31	0.00	0.00	
8,900.00	90.00	179.46	7,406.00	-839.81	-1,657.97	1,060.22	0.00	0.00	
9,000.00	90.00	179.46	7,406.00	-939.81	-1,657.02	1,159.13	0.00	0.00	
9,100.00	90.00	179.46	7,406.00	-1,039.80	-1,656.07	1,258.04	0.00	0.00	
9,200.00	90.00	179.46	7,406.00	-1,139.80	-1,655.13	1,356.95	0.00	0.00	
9,300.00	90.00	179.46	7,406.00	-1,239.79	-1,654.18	1,455.86	0.00	0.00	
9,400.00	90.00	179.46	7,406.00	-1,339.79	-1,653.23	1,554.78	0.00	0.00	
9,500.00	90.00	179.46	7,406.00	-1,439.78	-1,652.29	1,653.69	0.00	0.00	
9,600.00	90.00	179.46	7,406.00	-1,539.78	-1,651.34	1,752.60	0.00	0.00	
9,700.00	90.00	179.46	7,406.00	-1,639.77	-1,650.39	1,851.51	0.00	0.00	
9,800.00	90.00	179.46	7,406.00	-1,739.77	-1,649.45	1,950.42	0.00	0.00	

Cathedral Energy Services

Planning Report

Database:	USA EDM 5000 Multi Users DB	Local Co-ordinate Reference:	Well DREAM WEAVER South 3A-21H-N268 - SI
Company:	Crestone Peak Resources	TVD Reference:	23' KB @ 4924.00usft (Original Well Elev)
Project:	DJ BASIN	MD Reference:	23' KB @ 4924.00usft (Original Well Elev)
Site:	S21-T2N-R68W	North Reference:	True
Well:	DREAM WEAVER South 3A-21H-N268	Survey Calculation Method:	Minimum Curvature
Wellbore:	OH		
Design:	PLAN #1		

Planned Survey

Measured Depth (usft)	Inclination (°)	Azimuth (°)	Vertical Depth (usft)	+N/-S (usft)	+E/-W (usft)	Vertical Section (usft)	Dogleg Rate (°/100usft)	Build Rate (°/100u)	Comments / Formations
9,900.00	90.00	179.46	7,406.00	-1,839.77	-1,648.50	2,049.33	0.00	0.00	
10,000.00	90.00	179.46	7,406.00	-1,939.76	-1,647.55	2,148.24	0.00	0.00	
10,100.00	90.00	179.46	7,406.00	-2,039.76	-1,646.61	2,247.16	0.00	0.00	
10,200.00	90.00	179.46	7,406.00	-2,139.75	-1,645.66	2,346.07	0.00	0.00	
10,300.00	90.00	179.46	7,406.00	-2,239.75	-1,644.71	2,444.98	0.00	0.00	
10,400.00	90.00	179.46	7,406.00	-2,339.74	-1,643.77	2,543.89	0.00	0.00	
10,500.00	90.00	179.46	7,406.00	-2,439.74	-1,642.82	2,642.80	0.00	0.00	
10,600.00	90.00	179.46	7,406.00	-2,539.73	-1,641.87	2,741.71	0.00	0.00	
10,700.00	90.00	179.46	7,406.00	-2,639.73	-1,640.93	2,840.63	0.00	0.00	
10,800.00	90.00	179.46	7,406.00	-2,739.72	-1,639.98	2,939.54	0.00	0.00	
10,900.00	90.00	179.46	7,406.00	-2,839.72	-1,639.03	3,038.45	0.00	0.00	
11,000.00	90.00	179.46	7,406.00	-2,939.72	-1,638.09	3,137.36	0.00	0.00	
11,100.00	90.00	179.46	7,406.00	-3,039.71	-1,637.14	3,236.27	0.00	0.00	
11,200.00	90.00	179.46	7,406.00	-3,139.71	-1,636.19	3,335.18	0.00	0.00	
11,300.00	90.00	179.46	7,406.00	-3,239.70	-1,635.25	3,434.10	0.00	0.00	
11,400.00	90.00	179.46	7,406.00	-3,339.70	-1,634.30	3,533.01	0.00	0.00	
11,500.00	90.00	179.46	7,406.00	-3,439.69	-1,633.35	3,631.92	0.00	0.00	
11,600.00	90.00	179.46	7,406.00	-3,539.69	-1,632.41	3,730.83	0.00	0.00	
11,700.00	90.00	179.46	7,406.00	-3,639.68	-1,631.46	3,829.74	0.00	0.00	
11,800.00	90.00	179.46	7,406.00	-3,739.68	-1,630.51	3,928.65	0.00	0.00	
11,900.00	90.00	179.46	7,406.00	-3,839.68	-1,629.57	4,027.56	0.00	0.00	
12,000.00	90.00	179.46	7,406.00	-3,939.67	-1,628.62	4,126.48	0.00	0.00	
12,100.00	90.00	179.46	7,406.00	-4,039.67	-1,627.67	4,225.39	0.00	0.00	
12,200.00	90.00	179.46	7,406.00	-4,139.66	-1,626.73	4,324.30	0.00	0.00	
12,300.00	90.00	179.46	7,406.00	-4,239.66	-1,625.78	4,423.21	0.00	0.00	
12,400.00	90.00	179.46	7,406.00	-4,339.65	-1,624.83	4,522.12	0.00	0.00	
12,500.00	90.00	179.46	7,406.00	-4,439.65	-1,623.89	4,621.03	0.00	0.00	
12,600.00	90.00	179.46	7,406.00	-4,539.64	-1,622.94	4,719.95	0.00	0.00	
12,700.00	90.00	179.46	7,406.00	-4,639.64	-1,621.99	4,818.86	0.00	0.00	
12,800.00	90.00	179.46	7,406.00	-4,739.64	-1,621.05	4,917.77	0.00	0.00	
12,900.00	90.00	179.46	7,406.00	-4,839.63	-1,620.10	5,016.68	0.00	0.00	
13,000.00	90.00	179.46	7,406.00	-4,939.63	-1,619.15	5,115.59	0.00	0.00	
13,100.00	90.00	179.46	7,406.00	-5,039.62	-1,618.21	5,214.50	0.00	0.00	
13,160.38	90.00	179.46	7,406.00	-5,100.00	-1,617.63	5,274.23	0.00	0.00	Interp @ 7406.00 (DREAM WEAVER South 3A
13,200.00	90.00	180.25	7,406.00	-5,139.62	-1,617.53	5,313.45	2.00	0.00	
13,200.51	90.00	180.26	7,406.00	-5,140.13	-1,617.54	5,313.96	2.00	0.00	
13,300.00	90.00	180.26	7,406.00	-5,239.62	-1,617.99	5,412.56	0.00	0.00	
13,400.00	90.00	180.26	7,406.00	-5,339.62	-1,618.44	5,511.67	0.00	0.00	
13,500.00	90.00	180.26	7,406.00	-5,439.62	-1,618.90	5,610.78	0.00	0.00	
13,600.00	90.00	180.26	7,406.00	-5,539.61	-1,619.35	5,709.89	0.00	0.00	
13,700.00	90.00	180.26	7,406.00	-5,639.61	-1,619.80	5,808.99	0.00	0.00	
13,800.00	90.00	180.26	7,406.00	-5,739.61	-1,620.26	5,908.10	0.00	0.00	
13,900.00	90.00	180.26	7,406.00	-5,839.61	-1,620.71	6,007.21	0.00	0.00	
14,000.00	90.00	180.26	7,406.00	-5,939.61	-1,621.17	6,106.32	0.00	0.00	
14,100.00	90.00	180.26	7,406.00	-6,039.61	-1,621.62	6,205.43	0.00	0.00	
14,200.00	90.00	180.26	7,406.00	-6,139.61	-1,622.08	6,304.53	0.00	0.00	
14,300.00	90.00	180.26	7,406.00	-6,239.61	-1,622.53	6,403.64	0.00	0.00	
14,400.00	90.00	180.26	7,406.00	-6,339.61	-1,622.98	6,502.75	0.00	0.00	
14,500.00	90.00	180.26	7,406.00	-6,439.61	-1,623.44	6,601.86	0.00	0.00	
14,600.00	90.00	180.26	7,406.00	-6,539.60	-1,623.89	6,700.97	0.00	0.00	
14,700.00	90.00	180.26	7,406.00	-6,639.60	-1,624.35	6,800.07	0.00	0.00	
14,800.00	90.00	180.26	7,406.00	-6,739.60	-1,624.80	6,899.18	0.00	0.00	

Cathedral Energy Services

Planning Report

Database:	USA EDM 5000 Multi Users DB	Local Co-ordinate Reference:	Well DREAM WEAVER South 3A-21H-N268 - SI
Company:	Crestone Peak Resources	TVD Reference:	23' KB @ 4924.00usft (Original Well Elev)
Project:	DJ BASIN	MD Reference:	23' KB @ 4924.00usft (Original Well Elev)
Site:	S21-T2N-R68W	North Reference:	True
Well:	DREAM WEAVER South 3A-21H-N268	Survey Calculation Method:	Minimum Curvature
Wellbore:	OH		
Design:	PLAN #1		

Planned Survey									
Measured Depth (usft)	Inclination (°)	Azimuth (°)	Vertical Depth (usft)	+N/-S (usft)	+E/-W (usft)	Vertical Section (usft)	Dogleg Rate (°/100usft)	Build Rate (°/100u)	Comments / Formations
14,900.00	90.00	180.26	7,406.00	-6,839.60	-1,625.26	6,998.29	0.00	0.00	
15,000.00	90.00	180.26	7,406.00	-6,939.60	-1,625.71	7,097.40	0.00	0.00	
15,100.00	90.00	180.26	7,406.00	-7,039.60	-1,626.16	7,196.51	0.00	0.00	
15,200.00	90.00	180.26	7,406.00	-7,139.60	-1,626.62	7,295.61	0.00	0.00	
15,300.00	90.00	180.26	7,406.00	-7,239.60	-1,627.07	7,394.72	0.00	0.00	
15,400.00	90.00	180.26	7,406.00	-7,339.60	-1,627.53	7,493.83	0.00	0.00	
15,500.00	90.00	180.26	7,406.00	-7,439.59	-1,627.98	7,592.94	0.00	0.00	
15,600.00	90.00	180.26	7,406.00	-7,539.59	-1,628.43	7,692.05	0.00	0.00	
15,700.00	90.00	180.26	7,406.00	-7,639.59	-1,628.89	7,791.15	0.00	0.00	
15,800.00	90.00	180.26	7,406.00	-7,739.59	-1,629.34	7,890.26	0.00	0.00	
15,900.00	90.00	180.26	7,406.00	-7,839.59	-1,629.80	7,989.37	0.00	0.00	
16,000.00	90.00	180.26	7,406.00	-7,939.59	-1,630.25	8,088.48	0.00	0.00	
16,100.00	90.00	180.26	7,406.00	-8,039.59	-1,630.71	8,187.59	0.00	0.00	
16,200.00	90.00	180.26	7,406.00	-8,139.59	-1,631.16	8,286.69	0.00	0.00	
16,300.00	90.00	180.26	7,406.00	-8,239.59	-1,631.61	8,385.80	0.00	0.00	
16,400.00	90.00	180.26	7,406.00	-8,339.59	-1,632.07	8,484.91	0.00	0.00	
16,500.00	90.00	180.26	7,406.00	-8,439.58	-1,632.52	8,584.02	0.00	0.00	
16,600.00	90.00	180.26	7,406.00	-8,539.58	-1,632.98	8,683.13	0.00	0.00	
16,700.00	90.00	180.26	7,406.00	-8,639.58	-1,633.43	8,782.23	0.00	0.00	
16,800.00	90.00	180.26	7,406.00	-8,739.58	-1,633.89	8,881.34	0.00	0.00	
16,900.00	90.00	180.26	7,406.00	-8,839.58	-1,634.34	8,980.45	0.00	0.00	
17,000.00	90.00	180.26	7,406.00	-8,939.58	-1,634.79	9,079.56	0.00	0.00	
17,100.00	90.00	180.26	7,406.00	-9,039.58	-1,635.25	9,178.67	0.00	0.00	
17,200.00	90.00	180.26	7,406.00	-9,139.58	-1,635.70	9,277.77	0.00	0.00	
17,300.00	90.00	180.26	7,406.00	-9,239.58	-1,636.16	9,376.88	0.00	0.00	
17,400.00	90.00	180.26	7,406.00	-9,339.58	-1,636.61	9,475.99	0.00	0.00	
17,500.00	90.00	180.26	7,406.00	-9,439.57	-1,637.06	9,575.10	0.00	0.00	
17,600.00	90.00	180.26	7,406.00	-9,539.57	-1,637.52	9,674.21	0.00	0.00	
17,700.00	90.00	180.26	7,406.00	-9,639.57	-1,637.97	9,773.31	0.00	0.00	
17,800.00	90.00	180.26	7,406.00	-9,739.57	-1,638.43	9,872.42	0.00	0.00	
17,900.00	90.00	180.26	7,406.00	-9,839.57	-1,638.88	9,971.53	0.00	0.00	
18,000.00	90.00	180.26	7,406.00	-9,939.57	-1,639.34	10,070.64	0.00	0.00	
18,100.00	90.00	180.26	7,406.00	-10,039.57	-1,639.79	10,169.75	0.00	0.00	
18,200.00	90.00	180.26	7,406.00	-10,139.57	-1,640.24	10,268.85	0.00	0.00	
18,300.00	90.00	180.26	7,406.00	-10,239.57	-1,640.70	10,367.96	0.00	0.00	
18,400.00	90.00	180.26	7,406.00	-10,339.56	-1,641.15	10,467.07	0.00	0.00	
18,500.00	90.00	180.26	7,406.00	-10,439.56	-1,641.61	10,566.18	0.00	0.00	
18,600.00	90.00	180.26	7,406.00	-10,539.56	-1,642.06	10,665.29	0.00	0.00	
18,700.00	90.00	180.26	7,406.00	-10,639.56	-1,642.52	10,764.39	0.00	0.00	
18,800.00	90.00	180.26	7,406.00	-10,739.56	-1,642.97	10,863.50	0.00	0.00	
18,900.00	90.00	180.26	7,406.00	-10,839.56	-1,643.42	10,962.61	0.00	0.00	
18,934.58	90.00	180.26	7,406.00	-10,874.14	-1,643.58	10,996.88	0.00	0.00	
19,000.00	90.00	175.03	7,406.00	-10,939.48	-1,640.89	11,061.23	8.00	0.00	
19,100.00	90.00	167.03	7,406.00	-11,038.18	-1,625.31	11,156.84	8.00	0.00	
19,200.00	90.00	159.03	7,406.00	-11,133.74	-1,596.14	11,247.47	8.00	0.00	
19,287.83	90.00	152.00	7,406.00	-11,213.62	-1,559.76	11,321.58	8.00	0.00	DREAM WEAVER South 3A-21H-N268 BHL

Cathedral Energy Services

Planning Report

Database:	USA EDM 5000 Multi Users DB	Local Co-ordinate Reference:	Well DREAM WEAVER South 3A-21H-N268 - SI
Company:	Crestone Peak Resources	TVD Reference:	23' KB @ 4924.00usft (Original Well Elev)
Project:	DJ BASIN	MD Reference:	23' KB @ 4924.00usft (Original Well Elev)
Site:	S21-T2N-R68W	North Reference:	True
Well:	DREAM WEAVER South 3A-21H-N268	Survey Calculation Method:	Minimum Curvature
Wellbore:	OH		
Design:	PLAN #1		

Targets									
Target Name									
- hit/miss target	Dip Angle	Dip Dir.	TVD	+N/-S	+E/-W	Northing	Easting	Latitude	Longitude
- Shape	(°)	(°)	(usft)	(usft)	(usft)	(usft)	(usft)		
Interp @ 7406.00 (DRE/ - plan hits target center - Point	0.00	0.00	7,406.00	-5,100.00	-1,617.63	1,281,738.90	3,135,135.49	40.105755	-105.016886
DREAM WEAVER South - plan hits target center - Point	0.00	0.00	7,406.00	-11,213.62	-1,559.76	1,275,625.69	3,135,227.07	40.088972	-105.016678
DREAM WEAVER South - plan hits target center - Point	0.00	0.00	7,406.00	-3.68	-1,665.88	1,286,834.87	3,135,059.14	40.119745	-105.017060