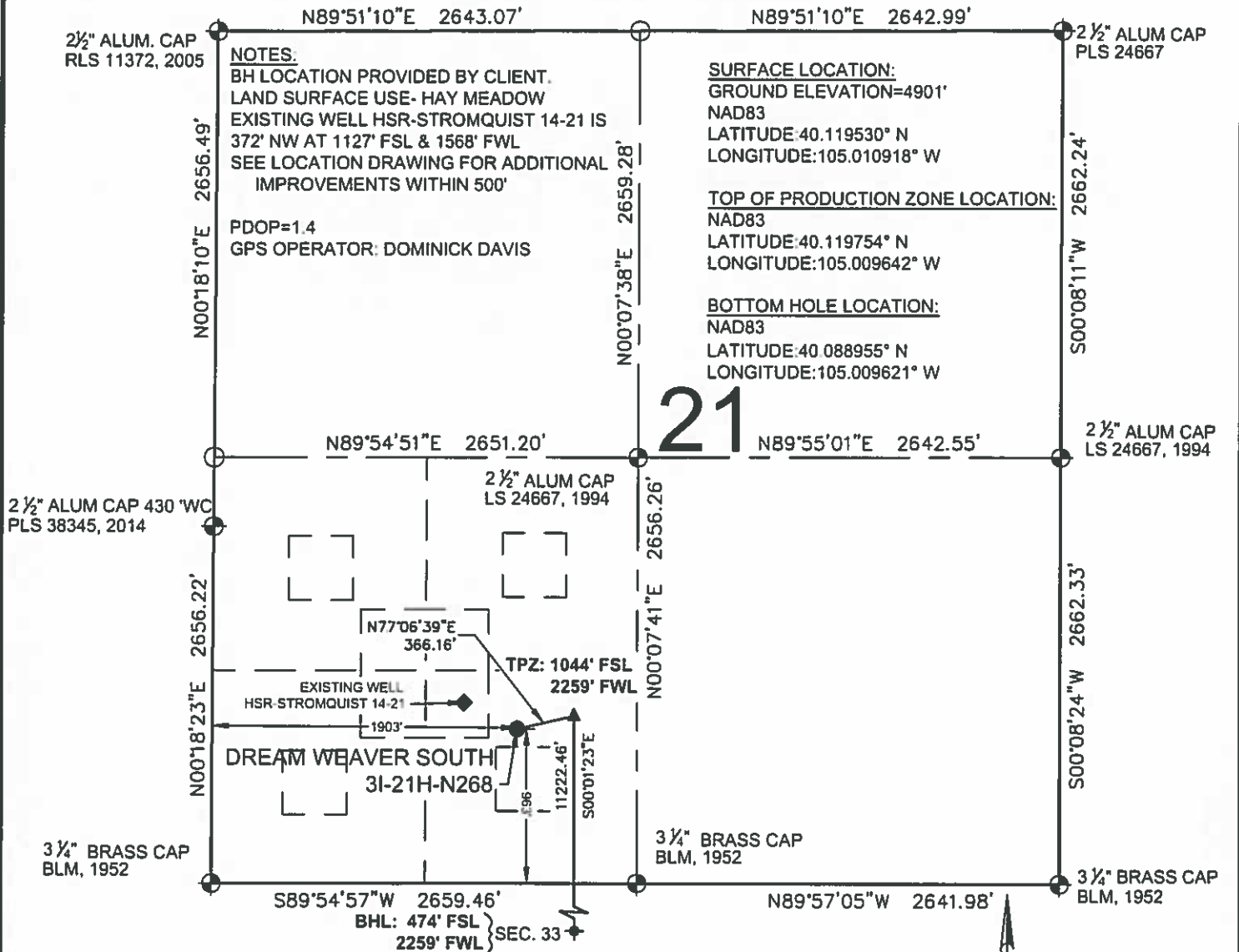


# DREAM WEAVER SOUTH 3I-21H-N268 WELL LOCATION EXHIBIT



**NOTES:**  
 BH LOCATION PROVIDED BY CLIENT.  
 LAND SURFACE USE- HAY MEADOW  
 EXISTING WELL HSR-STROMQUIST 14-21 IS  
 372' NW AT 1127' FSL & 1568' FWL  
 SEE LOCATION DRAWING FOR ADDITIONAL  
 IMPROVEMENTS WITHIN 500'

PDOP=1.4  
 GPS OPERATOR: DOMINICK DAVIS

**SURFACE LOCATION:**  
 GROUND ELEVATION=4901'  
 NAD83  
 LATITUDE:40.119530° N  
 LONGITUDE:105.010918° W

**TOP OF PRODUCTION ZONE LOCATION:**  
 NAD83  
 LATITUDE:40.119754° N  
 LONGITUDE:105.009642° W

**BOTTOM HOLE LOCATION:**  
 NAD83  
 LATITUDE:40.088955° N  
 LONGITUDE:105.009621° W

# 21

**LEGEND**

- ⊕ = EXISTING MONUMENT
- = CALCULATED POSITION
- = PROPOSED WELL
- ◆ = EXISTING WELL
- ⬆ = BOTTOM HOLE
- ▲ = TOP OF PRODUCTION ZONE
- TPZ = TOP OF PRODUCTION ZONE
- BHL = BOTTOM HOLE LOCATION
- WC = WITNESS CORNER

**NOTES:**

- THIS FIELD SURVEY CONFORMS TO THE MINIMUM STANDARDS SET BY THE C.O.G.C.C., RULE NO. 215
- ALL DISTANCES AND BEARINGS SHOWN HEREON ARE GROUND VALUES AS GPS MEASURED IN THE FIELD, WITH TIES TO WELLS MEASURED PERPENDICULAR TO LINES SHOWN HEREON. THIS LOW DISTORTION PROJECTION (LDP) IS BASED ON THE NORTH AMERICAN DATUM OF 1983, U.S. SURVEY FOOT WITH A LATITUDE ORIGIN OF 40.131498°N, A CENTRAL MERIDIAN LONGITUDE OF 104.998741°W, AND A SCALE FACTOR ON THE CENTRAL MERIDIAN OF 1.000232 (EXACT). THE LDP BASIS OF BEARINGS IS GEODETIC NORTH.
- FIELD VERIFICATION OF MONUMENTS COMPLETED WITHIN 1 YEAR OF SIGNATURE DATE, UNLESS OTHERWISE NOTED.


**WELL DREAM WEAVER SOUTH 3I-21H-N268  
TO BE LOCATED 963' FSL & 1903' FWL**

I, ROBERT J. GUFFEY, A LICENSED PROFESSIONAL LAND SURVEYOR IN THE STATE OF COLORADO, DO HEREBY STATE TO **CRESTONE PEAK RESOURCES** THAT THE WELL LOCATION EXHIBIT SHOWN HEREON WAS PREPARED BY ME OR UNDER MY DIRECT SUPERVISION AND THE DRAWING SHOWN HEREON ACCURATELY DEPICTS THE PROPOSED LOCATION OF THE WELL. THIS EXHIBIT MEETS THE REQUIREMENTS OF A GIS LAND POSITION AS DEFINED BY SECTION 38-51-102 (7.5) C.R.S. AND AS SUCH PER SECTION 38-51-109.3 C.R.S. CANNOT BE RELIED UPON TO DETERMINE OWNERSHIP.

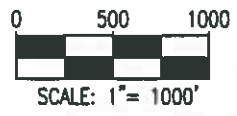
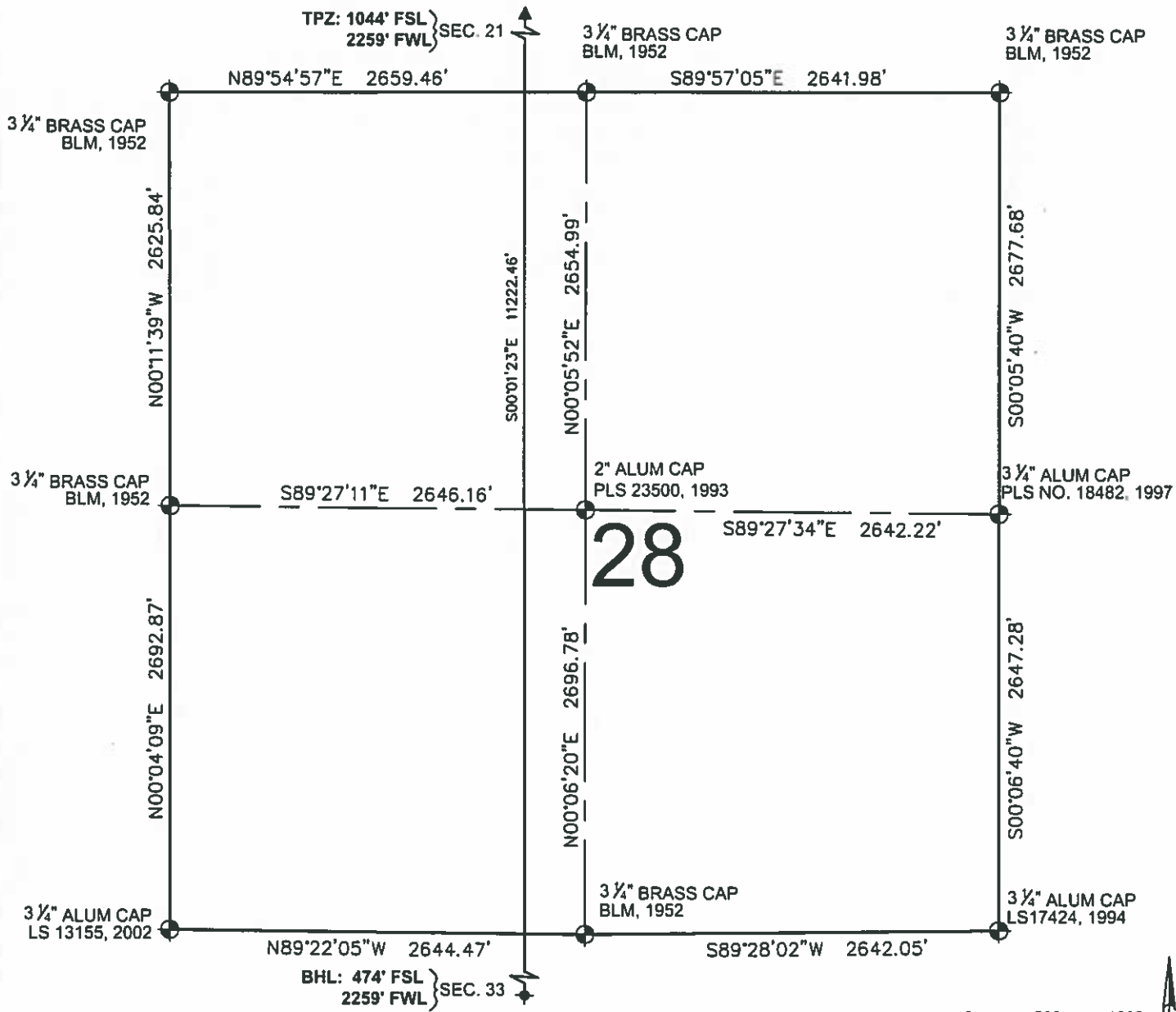
ROBERT J. GUFFEY, PLS 20680  
 COLORADO LICENSED PROFESSIONAL LAND SURVEYOR  
 FOR AND ON BEHALF OF P.F.S., LLC  
 d.b.a. ASCENT GEOMATICS SOLUTIONS



**NOTICE** ACCORDING TO COLORADO LAW YOU MUST COMMENCE ANY LEGAL ACTION BASED UPON ANY DEFECT IN THIS SURVEY WITHIN THREE YEARS AFTER YOU FIRST DISCOVER SUCH DEFECT. IN NO EVENT MAY ANY ACTION BASED UPON ANY DEFECT IN THIS SURVEY BE COMMENCED MORE THAN TEN YEARS FROM THIS SAID DATE OF THIS CERTIFICATION SHOWN HEREON.

 7535 Hilltop Circle Denver, CO 80221 (303) 928-7128 www.ascentgeomatics.com	FIELD DATE: <b>02-13-18</b>	WELL NAME: <b>DREAM WEAVER SOUTH 3I-21H-N268</b>	
	DRAWING DATE: <b>04-12-18</b>	SURFACE LOCATION: <b>SE 1/4 SW 1/4 SEC. 21, T2N, R68W, 6TH P.M.</b>	
BY: <b>RMC</b>	CHECKED: <b>CLP</b>	WELD COUNTY, COLORADO	



# DREAM WEAVER SOUTH 3I-21H-N268 WELL LOCATION EXHIBIT



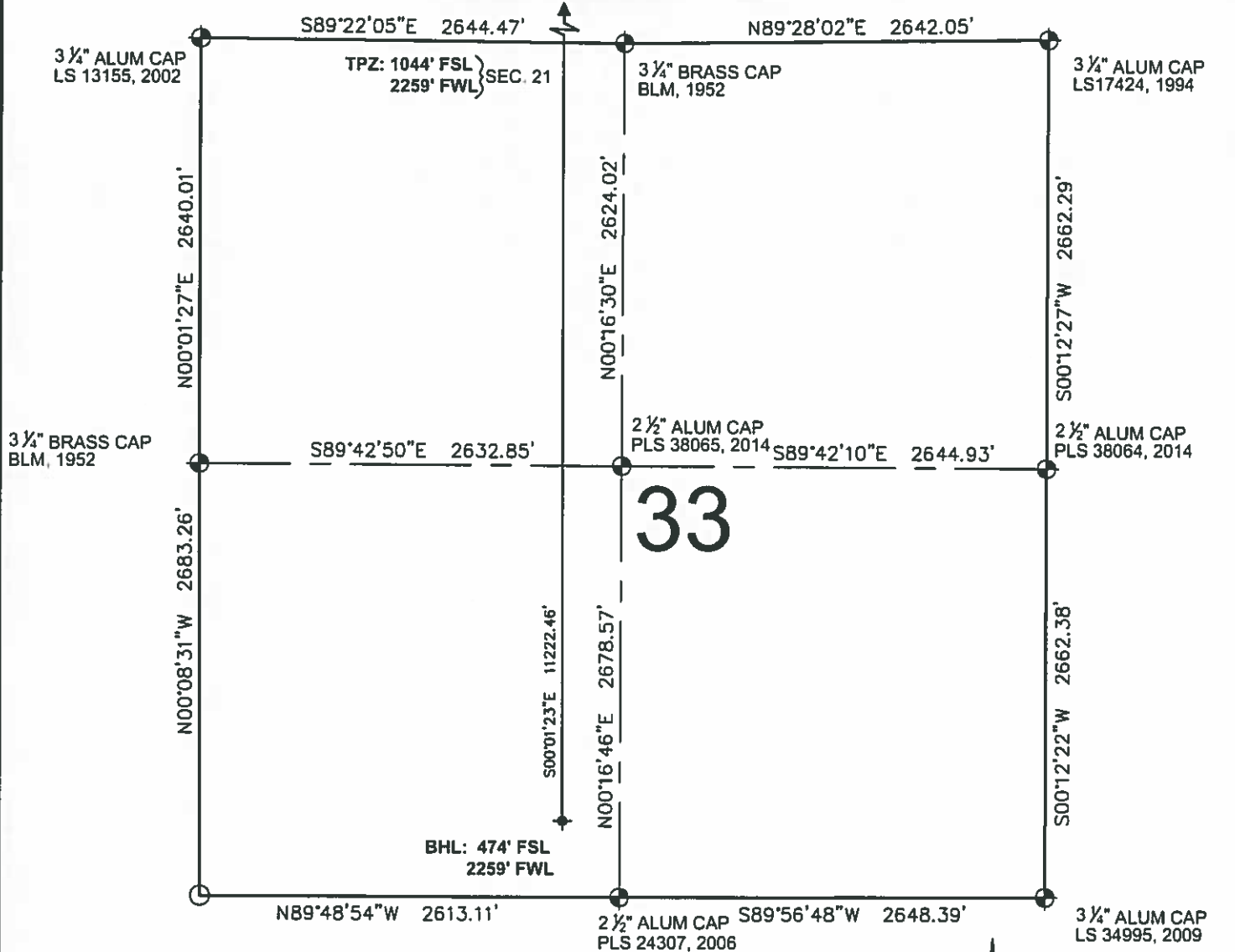
**LEGEND**

- ⊕ = EXISTING MONUMENT      ◆ = BOTTOM HOLE
  - = CALCULATED POSITION    ▲ = TOP OF PRODUCTION ZONE
  - = PROPOSED WELL        TPZ = TOP OF PRODUCTION ZONE
  - ◆ = EXISTING WELL        BHL = BOTTOM HOLE LOCATION
  - WC = WITNESS CORNER    FOR AND ON BEHALF OF P.F.S., LLC
- ROBERT J. GUFFEY, PLS 20680  
COLORADO LICENSED PROFESSIONAL LAND SURVEYOR  
d.b.a. ASCENT GEOMATICS SOLUTIONS

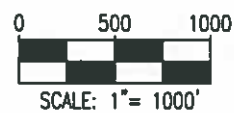
SHEET 2 OF 3

 <p>7535 Hilltop Circle Denver CO 80221 (303) 926-7120 www.ascentgeomatics.com</p>	FIELD DATE 02-13-18	WELL NAME DREAM WEAVER SOUTH 3I-21H-N268	PREPARED FOR  CRESTONE PEAK RESOURCES
	DRAWING DATE 04-12-18	SURFACE LOCATION SE 1/4 SW 1/4 SEC. 21, T2N, R68W, 6TH P.M. WELD COUNTY, COLORADO	
BY RMC	CHECKED CLP		

# DREAM WEAVER SOUTH 3I-21H-N268 WELL LOCATION EXHIBIT



# 33



**LEGEND**

- ⊕ = EXISTING MONUMENT    ⬇ = BOTTOM HOLE
- = CALCULATED POSITION    ▲ = TOP OF PRODUCTION ZONE
- = PROPOSED WELL    ROBERT J. GUFFEY, PLS 20680
- ◆ = EXISTING WELL    COLORADO LICENSED PROFESSIONAL LAND SURVEYOR
- TPZ = TOP OF PRODUCTION ZONE FOR AND ON BEHALF OF P.F.S., LLC
- BHL = BOTTOM HOLE LOCATION d.b.a. ASCENT GEOMATICS SOLUTIONS
- WC = WITNESS CORNER

SHEET 3 OF 3

<p>7515 Hilltop Circle Denver, CO 80221 (303) 928-7128 www.ascentgeomatics.com</p>	FIELD DATE 02-13-18	WELL NAME DREAM WEAVER SOUTH 3I-21H-N268	PREPARED FOR <p>CRESTONE PEAK RESOURCES</p>
	DRAWING DATE: 04-12-18	SURFACE LOCATION SE 1/4 SW 1/4 SEC. 21, T2N, R68W, 6TH P.M. WELD COUNTY, COLORADO	
BY RMC	CHECKED CLP		