



SECTION DETAILS

Sec	MD	Inc	Azi	TVD	+N/-S	+E/-W	Dleg	TFace	Vsect	Target
1	0.00	0.00	0.00	0.00	0.00	0.00	0.00	0.00	0.00	
2	400.00	0.00	0.00	400.00	0.00	0.00	0.00	0.00	0.00	
3	804.32	8.09	21.63	802.98	26.48	10.50	2.00	21.63	-26.12	
4	6656.82	8.09	21.63	6597.29	791.73	314.02	0.00	0.00	-781.09	
5	7875.72	90.00	179.97	7406.00	81.70	356.82	8.00	158.14	-70.04	DREAM WEAVER South 3I-21H-N268 TPZ
6	19095.12	90.00	179.97	7406.00-11137.70		362.86	0.00	0.00	1143.61	DREAM WEAVER South 3I-21H-N268 BHL

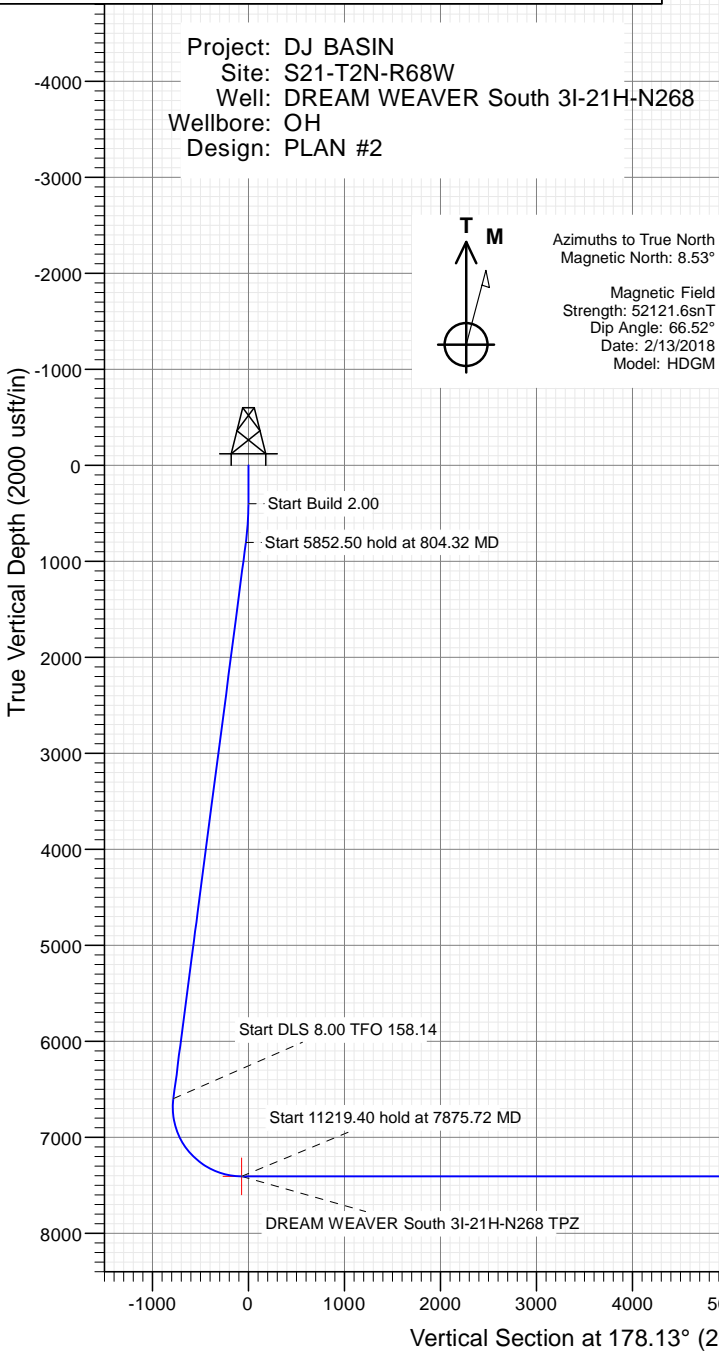
PLAN #2  
 DREAM WEAVER South 3I-21H-N268  
 23 KB @ 4924.00usft  
 Ground Level @ 4901.00  
 North American Datum 1983  
 Well DREAM WEAVER South 3I-21H-N268 - Slot DREAM WEAVER South 3I-21H-N268 SHL, True North

Type	Target	Azimuth	Origin	Type	N/S	E/W	From	TVD
TD	No Target (Freehand)	178.13	Slot	0.00	0.00	0.00	0.00	0.00

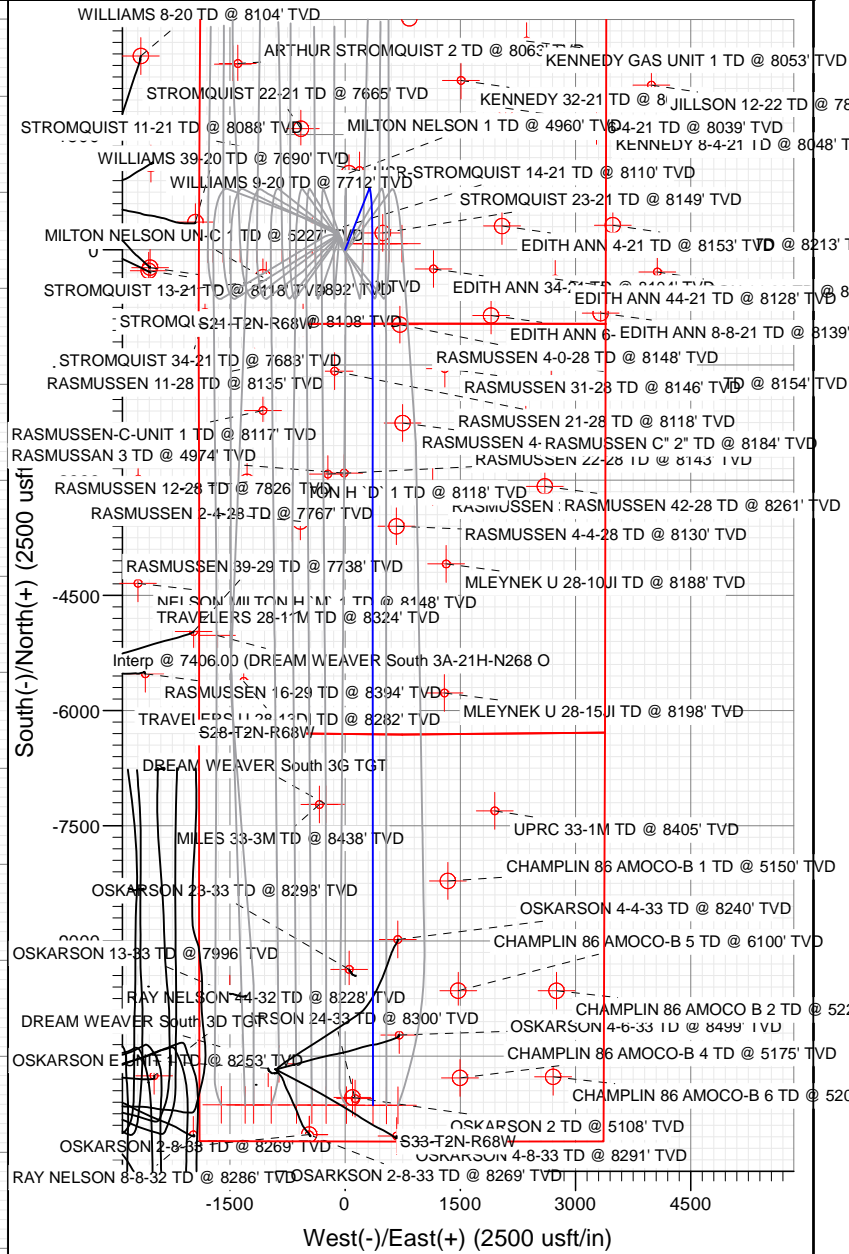
Name: DREAM WEAVER South 3I-21H-N268 BHL  
 DREAM WEAVER South 3I-21H-N268 TPZ

TVD	+N/-S	+E/-W	Latitude	Longitude
7406.00	-11137.70	362.86	40.089955	-105.009642
7406.00	81.70	356.82	40.119754	-105.009642

Project: DJ BASIN  
 Site: S21-T2N-R68W  
 Well: DREAM WEAVER South 3I-21H-N268  
 Wellbore: OH  
 Design: PLAN #2



Azimuths to True North  
 Magnetic North: 8.53°  
 Magnetic Field  
 Strength: 52121.6snT  
 Dip Angle: 66.52°  
 Date: 2/13/2018  
 Model: HDGM



WELL DETAILS: DREAM WEAVER South 3I-21H-N268

+N/-S	+E/-W	Northing	Easting	Latitude	Longitude
0.00	0.00	1286765.86	3136777.26	40.119530	-105.010918



# Cathedral Energy Services

## Planning Report

<b>Database:</b> USA EDM 5000 Multi Users DB	<b>Local Co-ordinate Reference:</b> Well DREAM WEAVER South 3I-21H-N268 - Slo
<b>Company:</b> Crestone Peak Resources	<b>TVD Reference:</b> 23' KB @ 4924.00usft
<b>Project:</b> DJ BASIN	<b>MD Reference:</b> 23' KB @ 4924.00usft
<b>Site:</b> S21-T2N-R68W	<b>North Reference:</b> True
<b>Well:</b> DREAM WEAVER South 3I-21H-N268	<b>Survey Calculation Method:</b> Minimum Curvature
<b>Wellbore:</b> OH	
<b>Design:</b> PLAN #2	

<b>Project</b> DJ BASIN		
<b>Map System:</b> US State Plane 1983	<b>System Datum:</b> Mean Sea Level	
<b>Geo Datum:</b> North American Datum 1983		
<b>Map Zone:</b> Colorado Northern Zone		

<b>Site</b> S21-T2N-R68W					
<b>Site Position:</b>		<b>Northing:</b>	1,286,960.17 usft	<b>Latitude:</b>	40.120065
<b>From:</b>	Lat/Long	<b>Easting:</b>	3,136,653.11 usft	<b>Longitude:</b>	-105.011358
<b>Position Uncertainty:</b>	0.00 usft	<b>Slot Radius:</b>	13-3/16"	<b>Grid Convergence:</b>	0.32 °

<b>Well</b> DREAM WEAVER South 3I-21H-N268 - Slot DREAM WEAVER South 3I-21H-N268 SHL						
<b>Well Position</b>	<b>+N/-S</b>	0.00 usft	<b>Northing:</b>	1,286,765.86 usft	<b>Latitude:</b>	40.119530
	<b>+E/-W</b>	0.00 usft	<b>Easting:</b>	3,136,777.26 usft	<b>Longitude:</b>	-105.010918
<b>Position Uncertainty</b>		0.00 usft	<b>Wellhead Elevation:</b>	usft	<b>Ground Level:</b>	4,901.00 usft

<b>Wellbore</b> OH					
<b>Magnetics</b>	<b>Model Name</b>	<b>Sample Date</b>	<b>Declination</b>	<b>Dip Angle</b>	<b>Field Strength</b>
			(°)	(°)	(nT)
	HDGM	2/13/2018	8.53	66.52	52,121.60000000

<b>Design</b> PLAN #2				
<b>Audit Notes:</b>				
<b>Version:</b>	<b>Phase:</b>	PLAN	<b>Tie On Depth:</b>	0.00
<b>Vertical Section:</b>	<b>Depth From (TVD)</b>	<b>+N/-S</b>	<b>+E/-W</b>	<b>Direction</b>
	(usft)	(usft)	(usft)	(°)
	0.00	0.00	0.00	178.13

<b>Plan Sections</b>										
Measured Depth (usft)	Inclination (°)	Azimuth (°)	Vertical Depth (usft)	+N/-S (usft)	+E/-W (usft)	Dogleg Rate (°/100usft)	Build Rate (°/100usft)	Turn Rate (°/100usft)	TFO (°)	Target
0.00	0.00	0.00	0.00	0.00	0.00	0.00	0.00	0.00	0.00	
400.00	0.00	0.00	400.00	0.00	0.00	0.00	0.00	0.00	0.00	
804.32	8.09	21.63	802.98	26.48	10.50	2.00	2.00	0.00	21.63	
6,656.82	8.09	21.63	6,597.29	791.73	314.02	0.00	0.00	0.00	0.00	
7,875.72	90.00	179.97	7,406.00	81.70	356.82	8.00	6.72	12.99	158.14	DREAM WEAVER So
19,095.12	90.00	179.97	7,406.00	-11,137.70	362.86	0.00	0.00	0.00	0.00	DREAM WEAVER So

# Cathedral Energy Services

## Planning Report

<b>Database:</b>	USA EDM 5000 Multi Users DB	<b>Local Co-ordinate Reference:</b>	Well DREAM WEAVER South 3I-21H-N268 - Slo
<b>Company:</b>	Crestone Peak Resources	<b>TVD Reference:</b>	23' KB @ 4924.00usft
<b>Project:</b>	DJ BASIN	<b>MD Reference:</b>	23' KB @ 4924.00usft
<b>Site:</b>	S21-T2N-R68W	<b>North Reference:</b>	True
<b>Well:</b>	DREAM WEAVER South 3I-21H-N268	<b>Survey Calculation Method:</b>	Minimum Curvature
<b>Wellbore:</b>	OH		
<b>Design:</b>	PLAN #2		

Planned Survey									
Measured Depth (usft)	Inclination (°)	Azimuth (°)	Vertical Depth (usft)	+N/-S (usft)	+E/-W (usft)	Vertical Section (usft)	Dogleg Rate (°/100usft)	Build Rate (°/100u)	Comments / Formations
0.00	0.00	0.00	0.00	0.00	0.00	0.00	0.00	0.00	
100.00	0.00	0.00	100.00	0.00	0.00	0.00	0.00	0.00	
200.00	0.00	0.00	200.00	0.00	0.00	0.00	0.00	0.00	
300.00	0.00	0.00	300.00	0.00	0.00	0.00	0.00	0.00	
400.00	0.00	0.00	400.00	0.00	0.00	0.00	0.00	0.00	
500.00	2.00	21.63	499.98	1.62	0.64	-1.60	2.00	2.00	
600.00	4.00	21.63	599.84	6.49	2.57	-6.40	2.00	2.00	
700.00	6.00	21.63	699.45	14.59	5.79	-14.39	2.00	2.00	
800.00	8.00	21.63	798.70	25.92	10.28	-25.57	2.00	2.00	
804.32	8.09	21.63	802.98	26.48	10.50	-26.12	2.00	2.00	
900.00	8.09	21.63	897.71	38.99	15.46	-38.46	0.00	0.00	
1,000.00	8.09	21.63	996.71	52.06	20.65	-51.36	0.00	0.00	
1,100.00	8.09	21.63	1,095.72	65.14	25.84	-64.26	0.00	0.00	
1,200.00	8.09	21.63	1,194.72	78.22	31.02	-77.16	0.00	0.00	
1,300.00	8.09	21.63	1,293.73	91.29	36.21	-90.06	0.00	0.00	
1,400.00	8.09	21.63	1,392.74	104.37	41.39	-102.96	0.00	0.00	
1,500.00	8.09	21.63	1,491.74	117.44	46.58	-115.86	0.00	0.00	
1,600.00	8.09	21.63	1,590.75	130.52	51.77	-128.76	0.00	0.00	
1,700.00	8.09	21.63	1,689.75	143.59	56.95	-141.66	0.00	0.00	
1,800.00	8.09	21.63	1,788.76	156.67	62.14	-154.56	0.00	0.00	
1,900.00	8.09	21.63	1,887.76	169.75	67.33	-167.46	0.00	0.00	
2,000.00	8.09	21.63	1,986.77	182.82	72.51	-180.36	0.00	0.00	
2,100.00	8.09	21.63	2,085.78	195.90	77.70	-193.26	0.00	0.00	
2,200.00	8.09	21.63	2,184.78	208.97	82.88	-206.16	0.00	0.00	
2,300.00	8.09	21.63	2,283.79	222.05	88.07	-219.06	0.00	0.00	
2,400.00	8.09	21.63	2,382.79	235.12	93.26	-231.96	0.00	0.00	
2,500.00	8.09	21.63	2,481.80	248.20	98.44	-244.86	0.00	0.00	
2,600.00	8.09	21.63	2,580.80	261.28	103.63	-257.76	0.00	0.00	
2,700.00	8.09	21.63	2,679.81	274.35	108.81	-270.66	0.00	0.00	
2,800.00	8.09	21.63	2,778.82	287.43	114.00	-283.56	0.00	0.00	
2,900.00	8.09	21.63	2,877.82	300.50	119.19	-296.46	0.00	0.00	
3,000.00	8.09	21.63	2,976.83	313.58	124.37	-309.36	0.00	0.00	
3,100.00	8.09	21.63	3,075.83	326.65	129.56	-322.26	0.00	0.00	
3,200.00	8.09	21.63	3,174.84	339.73	134.75	-335.16	0.00	0.00	
3,300.00	8.09	21.63	3,273.84	352.81	139.93	-348.06	0.00	0.00	
3,400.00	8.09	21.63	3,372.85	365.88	145.12	-360.96	0.00	0.00	
3,500.00	8.09	21.63	3,471.86	378.96	150.30	-373.86	0.00	0.00	
3,600.00	8.09	21.63	3,570.86	392.03	155.49	-386.76	0.00	0.00	
3,700.00	8.09	21.63	3,669.87	405.11	160.68	-399.66	0.00	0.00	
3,800.00	8.09	21.63	3,768.87	418.18	165.86	-412.56	0.00	0.00	
3,900.00	8.09	21.63	3,867.88	431.26	171.05	-425.46	0.00	0.00	
4,000.00	8.09	21.63	3,966.88	444.34	176.23	-438.36	0.00	0.00	
4,100.00	8.09	21.63	4,065.89	457.41	181.42	-451.26	0.00	0.00	
4,200.00	8.09	21.63	4,164.90	470.49	186.61	-464.16	0.00	0.00	
4,300.00	8.09	21.63	4,263.90	483.56	191.79	-477.06	0.00	0.00	
4,400.00	8.09	21.63	4,362.91	496.64	196.98	-489.96	0.00	0.00	
4,500.00	8.09	21.63	4,461.91	509.71	202.17	-502.86	0.00	0.00	
4,600.00	8.09	21.63	4,560.92	522.79	207.35	-515.76	0.00	0.00	
4,700.00	8.09	21.63	4,659.92	535.86	212.54	-528.66	0.00	0.00	
4,800.00	8.09	21.63	4,758.93	548.94	217.72	-541.56	0.00	0.00	
4,900.00	8.09	21.63	4,857.94	562.02	222.91	-554.46	0.00	0.00	
5,000.00	8.09	21.63	4,956.94	575.09	228.10	-567.36	0.00	0.00	

# Cathedral Energy Services

## Planning Report

<b>Database:</b>	USA EDM 5000 Multi Users DB	<b>Local Co-ordinate Reference:</b>	Well DREAM WEAVER South 3I-21H-N268 - Slo
<b>Company:</b>	Crestone Peak Resources	<b>TVD Reference:</b>	23' KB @ 4924.00usft
<b>Project:</b>	DJ BASIN	<b>MD Reference:</b>	23' KB @ 4924.00usft
<b>Site:</b>	S21-T2N-R68W	<b>North Reference:</b>	True
<b>Well:</b>	DREAM WEAVER South 3I-21H-N268	<b>Survey Calculation Method:</b>	Minimum Curvature
<b>Wellbore:</b>	OH		
<b>Design:</b>	PLAN #2		

### Planned Survey

Measured Depth (usft)	Inclination (°)	Azimuth (°)	Vertical Depth (usft)	+N/-S (usft)	+E/-W (usft)	Vertical Section (usft)	Dogleg Rate (°/100usft)	Build Rate (°/100u)	Comments / Formations
5,100.00	8.09	21.63	5,055.95	588.17	233.28	-580.26	0.00	0.00	
5,200.00	8.09	21.63	5,154.95	601.24	238.47	-593.16	0.00	0.00	
5,300.00	8.09	21.63	5,253.96	614.32	243.66	-606.06	0.00	0.00	
5,400.00	8.09	21.63	5,352.96	627.39	248.84	-618.96	0.00	0.00	
5,500.00	8.09	21.63	5,451.97	640.47	254.03	-631.86	0.00	0.00	
5,600.00	8.09	21.63	5,550.98	653.55	259.21	-644.76	0.00	0.00	
5,700.00	8.09	21.63	5,649.98	666.62	264.40	-657.66	0.00	0.00	
5,800.00	8.09	21.63	5,748.99	679.70	269.59	-670.56	0.00	0.00	
5,900.00	8.09	21.63	5,847.99	692.77	274.77	-683.46	0.00	0.00	
6,000.00	8.09	21.63	5,947.00	705.85	279.96	-696.36	0.00	0.00	
6,100.00	8.09	21.63	6,046.00	718.92	285.14	-709.26	0.00	0.00	
6,200.00	8.09	21.63	6,145.01	732.00	290.33	-722.16	0.00	0.00	
6,300.00	8.09	21.63	6,244.02	745.08	295.52	-735.06	0.00	0.00	
6,400.00	8.09	21.63	6,343.02	758.15	300.70	-747.96	0.00	0.00	
6,500.00	8.09	21.63	6,442.03	771.23	305.89	-760.86	0.00	0.00	
6,600.00	8.09	21.63	6,541.03	784.30	311.08	-773.76	0.00	0.00	
6,656.82	8.09	21.63	6,597.29	797.37	314.02	-781.09	0.00	0.00	
6,700.00	5.05	36.41	6,640.18	796.09	316.27	-785.37	8.00	-7.04	
6,800.00	4.95	142.73	6,739.96	796.19	321.50	-785.30	8.00	-0.09	
6,900.00	12.31	166.06	6,838.79	782.38	326.69	-771.33	8.00	7.35	
7,000.00	20.16	171.75	6,934.73	754.94	331.74	-743.74	8.00	7.85	
7,100.00	28.09	174.33	7,025.93	714.39	336.55	-703.06	8.00	7.93	
7,200.00	36.05	175.84	7,110.60	661.53	341.02	-650.08	8.00	7.96	
7,300.00	44.02	176.86	7,187.10	597.38	345.06	-585.83	8.00	7.97	
7,400.00	52.00	177.62	7,253.94	523.20	348.61	-511.57	8.00	7.98	
7,500.00	59.99	178.23	7,309.82	440.42	351.59	-428.74	8.00	7.98	
7,600.00	67.97	178.75	7,353.65	350.66	353.93	-338.95	8.00	7.99	
7,700.00	75.96	179.22	7,384.58	255.66	355.61	-243.95	8.00	7.99	
7,800.00	83.95	179.65	7,402.01	157.28	356.57	-145.59	8.00	7.99	
7,875.72	90.00	179.97	7,406.00	81.70	356.82	-70.04	8.00	7.99	DREAM WEAVER South 3I-21H-N268 TPZ
7,900.00	90.00	179.97	7,406.00	57.42	356.84	-45.77	0.00	0.00	
8,000.00	90.00	179.97	7,406.00	-42.58	356.89	54.18	0.00	0.00	
8,100.00	90.00	179.97	7,406.00	-142.58	356.94	154.13	0.00	0.00	
8,200.00	90.00	179.97	7,406.00	-242.58	357.00	254.08	0.00	0.00	
8,300.00	90.00	179.97	7,406.00	-342.58	357.05	354.02	0.00	0.00	
8,400.00	90.00	179.97	7,406.00	-442.58	357.11	453.97	0.00	0.00	
8,500.00	90.00	179.97	7,406.00	-542.58	357.16	553.92	0.00	0.00	
8,600.00	90.00	179.97	7,406.00	-642.58	357.21	653.87	0.00	0.00	
8,700.00	90.00	179.97	7,406.00	-742.58	357.27	753.82	0.00	0.00	
8,800.00	90.00	179.97	7,406.00	-842.58	357.32	853.77	0.00	0.00	
8,900.00	90.00	179.97	7,406.00	-942.58	357.37	953.72	0.00	0.00	
9,000.00	90.00	179.97	7,406.00	-1,042.58	357.43	1,053.66	0.00	0.00	
9,100.00	90.00	179.97	7,406.00	-1,142.58	357.48	1,153.61	0.00	0.00	
9,200.00	90.00	179.97	7,406.00	-1,242.58	357.54	1,253.56	0.00	0.00	
9,300.00	90.00	179.97	7,406.00	-1,342.58	357.59	1,353.51	0.00	0.00	
9,400.00	90.00	179.97	7,406.00	-1,442.58	357.64	1,453.46	0.00	0.00	
9,500.00	90.00	179.97	7,406.00	-1,542.58	357.70	1,553.41	0.00	0.00	
9,600.00	90.00	179.97	7,406.00	-1,642.58	357.75	1,653.36	0.00	0.00	
9,700.00	90.00	179.97	7,406.00	-1,742.58	357.81	1,753.31	0.00	0.00	
9,800.00	90.00	179.97	7,406.00	-1,842.58	357.86	1,853.25	0.00	0.00	
9,900.00	90.00	179.97	7,406.00	-1,942.58	357.91	1,953.20	0.00	0.00	
10,000.00	90.00	179.97	7,406.00	-2,042.58	357.97	2,053.15	0.00	0.00	

# Cathedral Energy Services

## Planning Report

<b>Database:</b>	USA EDM 5000 Multi Users DB	<b>Local Co-ordinate Reference:</b>	Well DREAM WEAVER South 3I-21H-N268 - Slo
<b>Company:</b>	Crestone Peak Resources	<b>TVD Reference:</b>	23' KB @ 4924.00usft
<b>Project:</b>	DJ BASIN	<b>MD Reference:</b>	23' KB @ 4924.00usft
<b>Site:</b>	S21-T2N-R68W	<b>North Reference:</b>	True
<b>Well:</b>	DREAM WEAVER South 3I-21H-N268	<b>Survey Calculation Method:</b>	Minimum Curvature
<b>Wellbore:</b>	OH		
<b>Design:</b>	PLAN #2		

### Planned Survey

Measured Depth (usft)	Inclination (°)	Azimuth (°)	Vertical Depth (usft)	+N/-S (usft)	+E/-W (usft)	Vertical Section (usft)	Dogleg Rate (°/100usft)	Build Rate (°/100u)	Comments / Formations
10,100.00	90.00	179.97	7,406.00	-2,142.58	358.02	2,153.10	0.00	0.00	
10,200.00	90.00	179.97	7,406.00	-2,242.58	358.07	2,253.05	0.00	0.00	
10,300.00	90.00	179.97	7,406.00	-2,342.58	358.13	2,353.00	0.00	0.00	
10,400.00	90.00	179.97	7,406.00	-2,442.58	358.18	2,452.95	0.00	0.00	
10,500.00	90.00	179.97	7,406.00	-2,542.58	358.24	2,552.90	0.00	0.00	
10,600.00	90.00	179.97	7,406.00	-2,642.58	358.29	2,652.84	0.00	0.00	
10,700.00	90.00	179.97	7,406.00	-2,742.58	358.34	2,752.79	0.00	0.00	
10,800.00	90.00	179.97	7,406.00	-2,842.58	358.40	2,852.74	0.00	0.00	
10,900.00	90.00	179.97	7,406.00	-2,942.58	358.45	2,952.69	0.00	0.00	
11,000.00	90.00	179.97	7,406.00	-3,042.58	358.50	3,052.64	0.00	0.00	
11,100.00	90.00	179.97	7,406.00	-3,142.58	358.56	3,152.59	0.00	0.00	
11,200.00	90.00	179.97	7,406.00	-3,242.58	358.61	3,252.54	0.00	0.00	
11,300.00	90.00	179.97	7,406.00	-3,342.58	358.67	3,352.49	0.00	0.00	
11,400.00	90.00	179.97	7,406.00	-3,442.58	358.72	3,452.43	0.00	0.00	
11,500.00	90.00	179.97	7,406.00	-3,542.58	358.77	3,552.38	0.00	0.00	
11,600.00	90.00	179.97	7,406.00	-3,642.58	358.83	3,652.33	0.00	0.00	
11,700.00	90.00	179.97	7,406.00	-3,742.58	358.88	3,752.28	0.00	0.00	
11,800.00	90.00	179.97	7,406.00	-3,842.58	358.94	3,852.23	0.00	0.00	
11,900.00	90.00	179.97	7,406.00	-3,942.58	358.99	3,952.18	0.00	0.00	
12,000.00	90.00	179.97	7,406.00	-4,042.58	359.04	4,052.13	0.00	0.00	
12,100.00	90.00	179.97	7,406.00	-4,142.58	359.10	4,152.08	0.00	0.00	
12,200.00	90.00	179.97	7,406.00	-4,242.58	359.15	4,252.02	0.00	0.00	
12,300.00	90.00	179.97	7,406.00	-4,342.58	359.20	4,351.97	0.00	0.00	
12,400.00	90.00	179.97	7,406.00	-4,442.58	359.26	4,451.92	0.00	0.00	
12,500.00	90.00	179.97	7,406.00	-4,542.58	359.31	4,551.87	0.00	0.00	
12,600.00	90.00	179.97	7,406.00	-4,642.58	359.37	4,651.82	0.00	0.00	
12,700.00	90.00	179.97	7,406.00	-4,742.58	359.42	4,751.77	0.00	0.00	
12,800.00	90.00	179.97	7,406.00	-4,842.58	359.47	4,851.72	0.00	0.00	
12,900.00	90.00	179.97	7,406.00	-4,942.58	359.53	4,951.66	0.00	0.00	
13,000.00	90.00	179.97	7,406.00	-5,042.58	359.58	5,051.61	0.00	0.00	
13,100.00	90.00	179.97	7,406.00	-5,142.58	359.63	5,151.56	0.00	0.00	
13,200.00	90.00	179.97	7,406.00	-5,242.58	359.69	5,251.51	0.00	0.00	
13,300.00	90.00	179.97	7,406.00	-5,342.58	359.74	5,351.46	0.00	0.00	
13,400.00	90.00	179.97	7,406.00	-5,442.58	359.80	5,451.41	0.00	0.00	
13,500.00	90.00	179.97	7,406.00	-5,542.58	359.85	5,551.36	0.00	0.00	
13,600.00	90.00	179.97	7,406.00	-5,642.58	359.90	5,651.31	0.00	0.00	
13,700.00	90.00	179.97	7,406.00	-5,742.58	359.96	5,751.25	0.00	0.00	
13,800.00	90.00	179.97	7,406.00	-5,842.58	360.01	5,851.20	0.00	0.00	
13,900.00	90.00	179.97	7,406.00	-5,942.58	360.07	5,951.15	0.00	0.00	
14,000.00	90.00	179.97	7,406.00	-6,042.58	360.12	6,051.10	0.00	0.00	
14,100.00	90.00	179.97	7,406.00	-6,142.58	360.17	6,151.05	0.00	0.00	
14,200.00	90.00	179.97	7,406.00	-6,242.58	360.23	6,251.00	0.00	0.00	
14,300.00	90.00	179.97	7,406.00	-6,342.58	360.28	6,350.95	0.00	0.00	
14,400.00	90.00	179.97	7,406.00	-6,442.58	360.33	6,450.90	0.00	0.00	
14,500.00	90.00	179.97	7,406.00	-6,542.58	360.39	6,550.84	0.00	0.00	
14,600.00	90.00	179.97	7,406.00	-6,642.58	360.44	6,650.79	0.00	0.00	
14,700.00	90.00	179.97	7,406.00	-6,742.58	360.50	6,750.74	0.00	0.00	
14,800.00	90.00	179.97	7,406.00	-6,842.58	360.55	6,850.69	0.00	0.00	
14,900.00	90.00	179.97	7,406.00	-6,942.58	360.60	6,950.64	0.00	0.00	
15,000.00	90.00	179.97	7,406.00	-7,042.58	360.66	7,050.59	0.00	0.00	
15,100.00	90.00	179.97	7,406.00	-7,142.58	360.71	7,150.54	0.00	0.00	
15,200.00	90.00	179.97	7,406.00	-7,242.58	360.76	7,250.49	0.00	0.00	

# Cathedral Energy Services

## Planning Report

<b>Database:</b>	USA EDM 5000 Multi Users DB	<b>Local Co-ordinate Reference:</b>	Well DREAM WEAVER South 3I-21H-N268 - Slo
<b>Company:</b>	Crestone Peak Resources	<b>TVD Reference:</b>	23' KB @ 4924.00usft
<b>Project:</b>	DJ BASIN	<b>MD Reference:</b>	23' KB @ 4924.00usft
<b>Site:</b>	S21-T2N-R68W	<b>North Reference:</b>	True
<b>Well:</b>	DREAM WEAVER South 3I-21H-N268	<b>Survey Calculation Method:</b>	Minimum Curvature
<b>Wellbore:</b>	OH		
<b>Design:</b>	PLAN #2		

### Planned Survey

Measured Depth (usft)	Inclination (°)	Azimuth (°)	Vertical Depth (usft)	+N/-S (usft)	+E/-W (usft)	Vertical Section (usft)	Dogleg Rate (°/100usft)	Build Rate (°/100u)	Comments / Formations
15,300.00	90.00	179.97	7,406.00	-7,342.58	360.82	7,350.43	0.00	0.00	
15,400.00	90.00	179.97	7,406.00	-7,442.58	360.87	7,450.38	0.00	0.00	
15,500.00	90.00	179.97	7,406.00	-7,542.58	360.93	7,550.33	0.00	0.00	
15,600.00	90.00	179.97	7,406.00	-7,642.58	360.98	7,650.28	0.00	0.00	
15,700.00	90.00	179.97	7,406.00	-7,742.58	361.03	7,750.23	0.00	0.00	
15,800.00	90.00	179.97	7,406.00	-7,842.58	361.09	7,850.18	0.00	0.00	
15,900.00	90.00	179.97	7,406.00	-7,942.58	361.14	7,950.13	0.00	0.00	
16,000.00	90.00	179.97	7,406.00	-8,042.58	361.20	8,050.08	0.00	0.00	
16,100.00	90.00	179.97	7,406.00	-8,142.58	361.25	8,150.02	0.00	0.00	
16,200.00	90.00	179.97	7,406.00	-8,242.58	361.30	8,249.97	0.00	0.00	
16,300.00	90.00	179.97	7,406.00	-8,342.58	361.36	8,349.92	0.00	0.00	
16,400.00	90.00	179.97	7,406.00	-8,442.58	361.41	8,449.87	0.00	0.00	
16,500.00	90.00	179.97	7,406.00	-8,542.58	361.46	8,549.82	0.00	0.00	
16,600.00	90.00	179.97	7,406.00	-8,642.58	361.52	8,649.77	0.00	0.00	
16,700.00	90.00	179.97	7,406.00	-8,742.58	361.57	8,749.72	0.00	0.00	
16,800.00	90.00	179.97	7,406.00	-8,842.58	361.63	8,849.66	0.00	0.00	
16,900.00	90.00	179.97	7,406.00	-8,942.58	361.68	8,949.61	0.00	0.00	
17,000.00	90.00	179.97	7,406.00	-9,042.58	361.73	9,049.56	0.00	0.00	
17,100.00	90.00	179.97	7,406.00	-9,142.58	361.79	9,149.51	0.00	0.00	
17,200.00	90.00	179.97	7,406.00	-9,242.58	361.84	9,249.46	0.00	0.00	
17,300.00	90.00	179.97	7,406.00	-9,342.58	361.89	9,349.41	0.00	0.00	
17,400.00	90.00	179.97	7,406.00	-9,442.58	361.95	9,449.36	0.00	0.00	
17,500.00	90.00	179.97	7,406.00	-9,542.58	362.00	9,549.31	0.00	0.00	
17,600.00	90.00	179.97	7,406.00	-9,642.58	362.06	9,649.25	0.00	0.00	
17,700.00	90.00	179.97	7,406.00	-9,742.58	362.11	9,749.20	0.00	0.00	
17,800.00	90.00	179.97	7,406.00	-9,842.58	362.16	9,849.15	0.00	0.00	
17,900.00	90.00	179.97	7,406.00	-9,942.58	362.22	9,949.10	0.00	0.00	
18,000.00	90.00	179.97	7,406.00	-10,042.58	362.27	10,049.05	0.00	0.00	
18,100.00	90.00	179.97	7,406.00	-10,142.58	362.33	10,149.00	0.00	0.00	
18,200.00	90.00	179.97	7,406.00	-10,242.58	362.38	10,248.95	0.00	0.00	
18,300.00	90.00	179.97	7,406.00	-10,342.58	362.43	10,348.90	0.00	0.00	
18,400.00	90.00	179.97	7,406.00	-10,442.58	362.49	10,448.84	0.00	0.00	
18,500.00	90.00	179.97	7,406.00	-10,542.58	362.54	10,548.79	0.00	0.00	
18,600.00	90.00	179.97	7,406.00	-10,642.58	362.59	10,648.74	0.00	0.00	
18,700.00	90.00	179.97	7,406.00	-10,742.58	362.65	10,748.69	0.00	0.00	
18,800.00	90.00	179.97	7,406.00	-10,842.58	362.70	10,848.64	0.00	0.00	
18,900.00	90.00	179.97	7,406.00	-10,942.58	362.76	10,948.59	0.00	0.00	
19,000.00	90.00	179.97	7,406.00	-11,042.58	362.81	11,048.54	0.00	0.00	
19,095.12	90.00	179.97	7,406.00	-11,137.70	362.86	11,143.61	0.00	0.00	DREAM WEAVER South 3I-21H-N268 BHL

# Cathedral Energy Services

## Planning Report

<b>Database:</b>	USA EDM 5000 Multi Users DB	<b>Local Co-ordinate Reference:</b>	Well DREAM WEAVER South 3I-21H-N268 - Slo
<b>Company:</b>	Crestone Peak Resources	<b>TVD Reference:</b>	23' KB @ 4924.00usft
<b>Project:</b>	DJ BASIN	<b>MD Reference:</b>	23' KB @ 4924.00usft
<b>Site:</b>	S21-T2N-R68W	<b>North Reference:</b>	True
<b>Well:</b>	DREAM WEAVER South 3I-21H-N268	<b>Survey Calculation Method:</b>	Minimum Curvature
<b>Wellbore:</b>	OH		
<b>Design:</b>	PLAN #2		

Targets									
Target Name	Dip Angle	Dip Dir.	TVD	+N/-S	+E/-W	Northing	Easting	Latitude	Longitude
- hit/miss target	(°)	(°)	(usft)	(usft)	(usft)	(usft)	(usft)		
- Shape									
DREAM WEAVER Sout	0.00	0.00	7,406.00	81.70	356.82	1,286,849.53	3,137,133.62	40.119754	-105.009642
- plan hits target center									
- Point									
DREAM WEAVER Sout	0.00	0.00	7,406.00	-11,137.70	362.86	1,275,630.34	3,137,201.54	40.088955	-105.009621
- plan hits target center									
- Point									