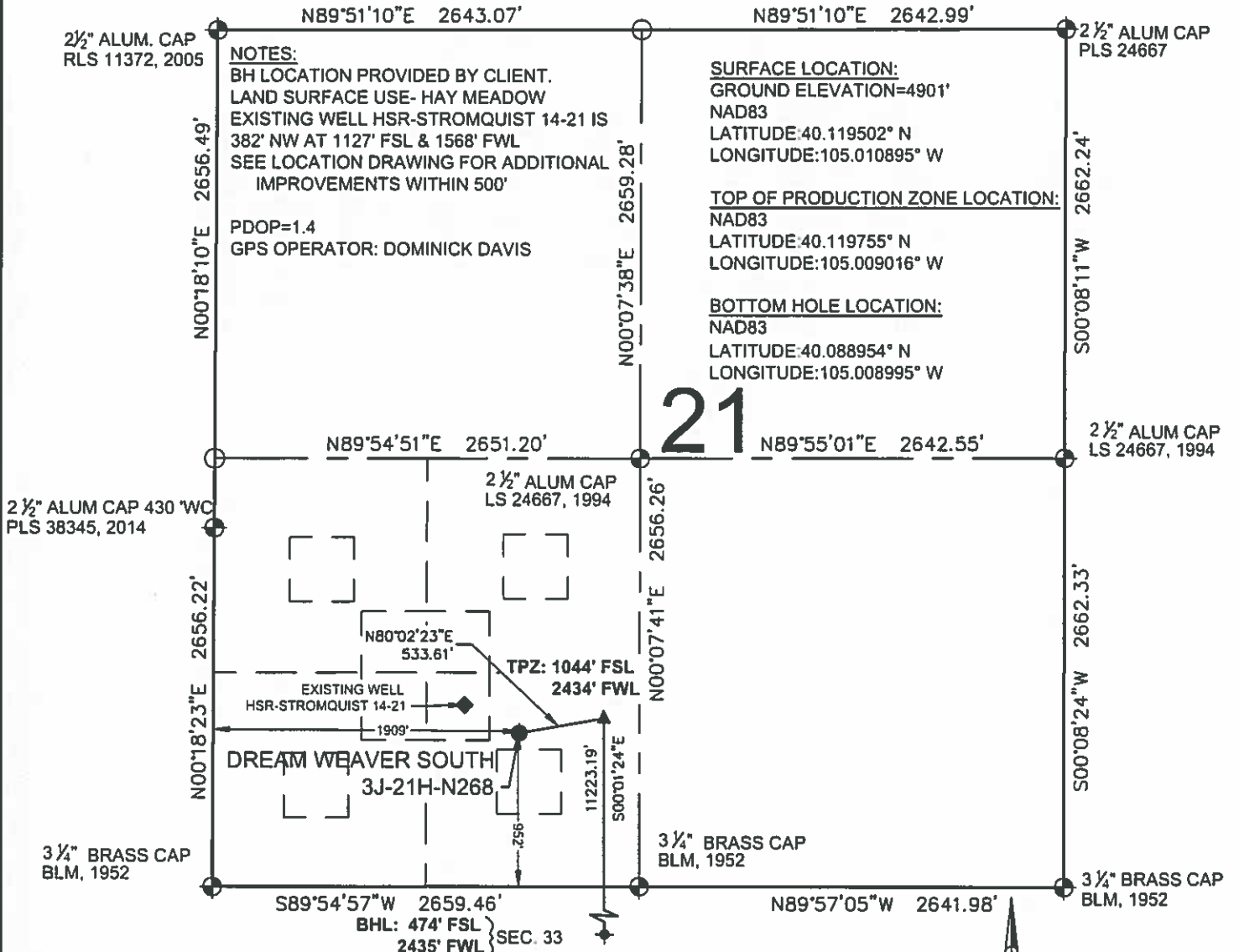


DREAM WEAVER SOUTH 3J-21H-N268 WELL LOCATION EXHIBIT



NOTES:
 BH LOCATION PROVIDED BY CLIENT.
 LAND SURFACE USE- HAY MEADOW
 EXISTING WELL HSR-STROMQUIST 14-21 IS
 382' NW AT 1127' FSL & 1568' FWL
 SEE LOCATION DRAWING FOR ADDITIONAL
 IMPROVEMENTS WITHIN 500'
 PDOP=1.4
 GPS OPERATOR: DOMINICK DAVIS

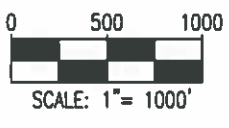
SURFACE LOCATION:
 GROUND ELEVATION=4901'
 NAD83
 LATITUDE:40.119502° N
 LONGITUDE:105.010895° W

TOP OF PRODUCTION ZONE LOCATION:
 NAD83
 LATITUDE:40.119755° N
 LONGITUDE:105.009016° W

BOTTOM HOLE LOCATION:
 NAD83
 LATITUDE:40.088954° N
 LONGITUDE:105.008995° W

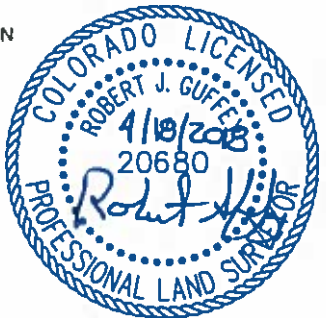
- LEGEND**
- ⊕ = EXISTING MONUMENT
 - = CALCULATED POSITION
 - = PROPOSED WELL
 - ◆ = EXISTING WELL
 - ⬤ = BOTTOM HOLE
 - ▲ = TOP OF PRODUCTION ZONE
 - TPZ = TOP OF PRODUCTION ZONE
 - BHL = BOTTOM HOLE LOCATION
 - WC = WITNESS CORNER

WELL DREAM WEAVER SOUTH 3J-21H-N268 TO BE LOCATED 952' FSL & 1909' FWL



- NOTES:**
- THIS FIELD SURVEY CONFORMS TO THE MINIMUM STANDARDS SET BY THE C O G C C , RULE NO. 215
 - ALL DISTANCES AND BEARINGS SHOWN HEREON ARE GROUND VALUES AS GPS MEASURED IN THE FIELD, WITH TIES TO WELLS MEASURED PERPENDICULAR TO LINES SHOWN HEREON. THIS LOW DISTORTION PROJECTION (LDP) IS BASED ON THE NORTH AMERICAN DATUM OF 1983, U.S. SURVEY FOOT WITH A LATITUDE ORIGIN OF 40.131498°N, A CENTRAL MERIDIAN LONGITUDE OF 104.998741°W, AND A SCALE FACTOR ON THE CENTRAL MERIDIAN OF 1.000232 (EXACT). THE LDP BASIS OF BEARINGS IS GEODETIC NORTH.
 - FIELD VERIFICATION OF MONUMENTS COMPLETED WITHIN 1 YEAR OF SIGNATURE DATE, UNLESS OTHERWISE NOTED.

I, ROBERT J. GUFFEY, A LICENSED PROFESSIONAL LAND SURVEYOR IN THE STATE OF COLORADO, DO HEREBY STATE TO **CRESTONE PEAK RESOURCES** THAT THE WELL LOCATION EXHIBIT SHOWN HEREON WAS PREPARED BY ME OR UNDER MY DIRECT SUPERVISION AND THE DRAWING SHOWN HEREON ACCURATELY DEPICTS THE PROPOSED LOCATION OF THE WELL. THIS EXHIBIT MEETS THE REQUIREMENTS OF A GIS LAND POSITION AS DEFINED BY SECTION 38-51-102 (7.5) C.R.S. AND AS SUCH PER SECTION 38-51-109.3 C.R.S. CANNOT BE RELIED UPON TO DETERMINE OWNERSHIP.

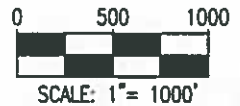
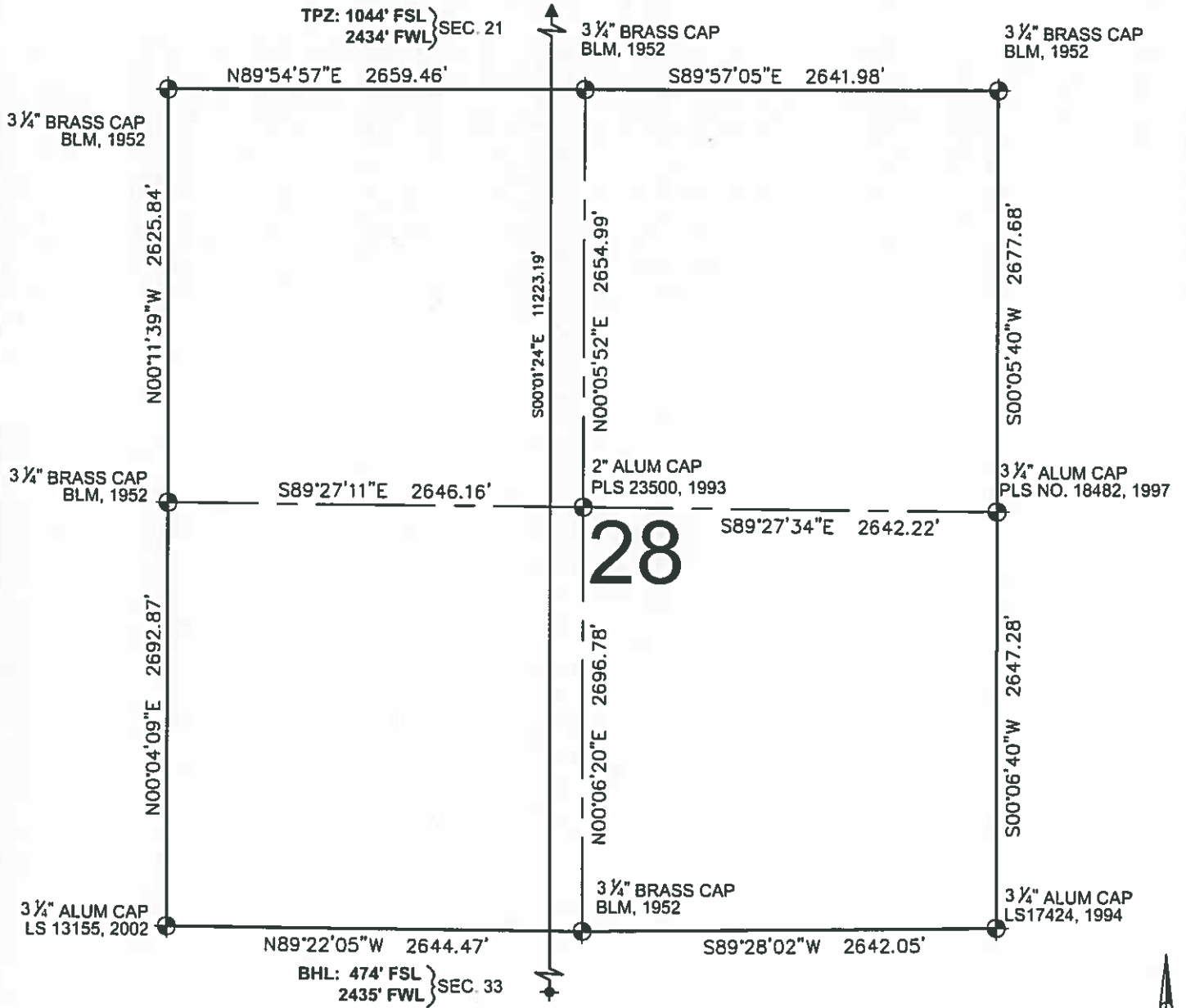


ROBERT J. GUFFEY, PLS 20680
 COLORADO LICENSED PROFESSIONAL LAND SURVEYOR
 FOR AND ON BEHALF OF P.F.S., LLC
 d b a. ASCENT GEOMATICS SOLUTIONS

NOTICE: ACCORDING TO COLORADO LAW YOU MUST COMMENCE ANY LEGAL ACTION BASED UPON ANY DEFECT IN THIS SURVEY WITHIN THREE YEARS AFTER YOU FIRST DISCOVER SUCH DEFECT. IN NO EVENT MAY ANY ACTION BASED UPON ANY DEFECT IN THIS SURVEY BE COMMENCED MORE THAN TEN YEARS FROM THIS SAID DATE OF THIS CERTIFICATE ON SHOWN HEREON.

	FIELD DATE: 02-13-18	WELL NAME: DREAM WEAVER SOUTH 3J-21H-N268	PREPARED FOR
	DRAWING DATE: 04-12-18	SURFACE LOCATION: SE 1/4 SW 1/4 SEC. 21, T2N, R68W, 6TH P.M. WELD COUNTY, COLORADO	
BY: RMC CHECKED: CLP			

DREAM WEAVER SOUTH 3J-21H-N268 WELL LOCATION EXHIBIT





LEGEND

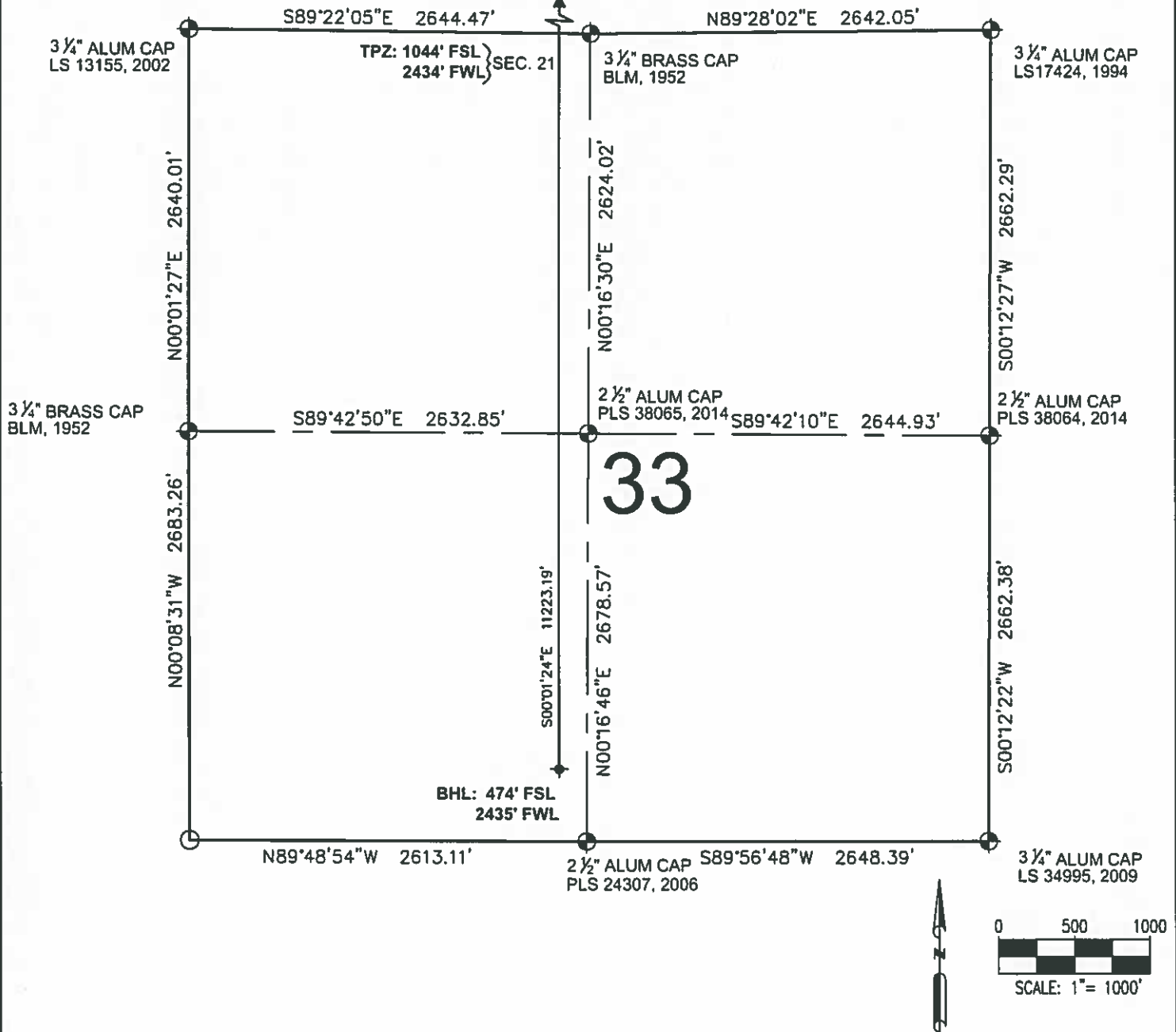
- ⊕ = EXISTING MONUMENT ⚡ = BOTTOM HOLE
- = CALCULATED POSITION ▲ = TOP OF PRODUCTION ZONE
- = PROPOSED WELL TPZ = TOP OF PRODUCTION ZONE
- ◆ = EXISTING WELL BHL = BOTTOM HOLE LOCATION
- WC = WITNESS CORNER

ROBERT J. GUFFEY, PLS 20680
 COLORADO LICENSED PROFESSIONAL LAND SURVEYOR
 FOR AND ON BEHALF OF P.F.S., LLC
 d b a. ASCENT GEOMATICS SOLUTIONS

SHEET 2 OF 3

 7935 Hilltop Circle Denver, CO 80221 (303) 928-7128 www.ascentgeomatics.com	FIELD DATE: 02-13-18	WELL NAME: DREAM WEAVER SOUTH 3J-21H-N268	PREPARED FOR  CRESTONE PEAK RESOURCES
	DRAWING DATE: 04-12-18	SURFACE LOCATION: SE 1/4 SW 1/4 SEC. 21, T2N, R68W, 6TH P.M. WELD COUNTY, COLORADO	
BY: RMC	CHECKED: CLP		

DREAM WEAVER SOUTH 3J-21H-N268 WELL LOCATION EXHIBIT





LEGEND

- = EXISTING MONUMENT ◆ = BOTTOM HOLE
 - = CALCULATED POSITION ▲ = TOP OF PRODUCTION ZONE
 - = PROPOSED WELL TPZ = TOP OF PRODUCTION ZONE
 - ◆ = EXISTING WELL BHL = BOTTOM HOLE LOCATION
 - WC = WITNESS CORNER
- ROBERT J. GUFFEY, PLS 20680
 COLORADO LICENSED PROFESSIONAL LAND SURVEYOR
 FOR AND ON BEHALF OF P.F.S., LLC
 d b a ASCENT GEOMATICS SOLUTIONS



SHEET 3 OF 3

 ASCENT <small>COMPUTING SOLUTIONS</small>	FIELD DATE 02-13-18	WELL NAME DREAM WEAVER SOUTH 3J-21H-N268	PREPARED FOR  CRESTONE PEAK <small>RESOURCES</small>
	DRAWING DATE 04-12-18	SURFACE LOCATION SE 1/4 SW 1/4 SEC. 21, T2N, R68W, 6TH P.M. WELD COUNTY, COLORADO	
BY RMC	CHECKED CLP		